

# Project Scope

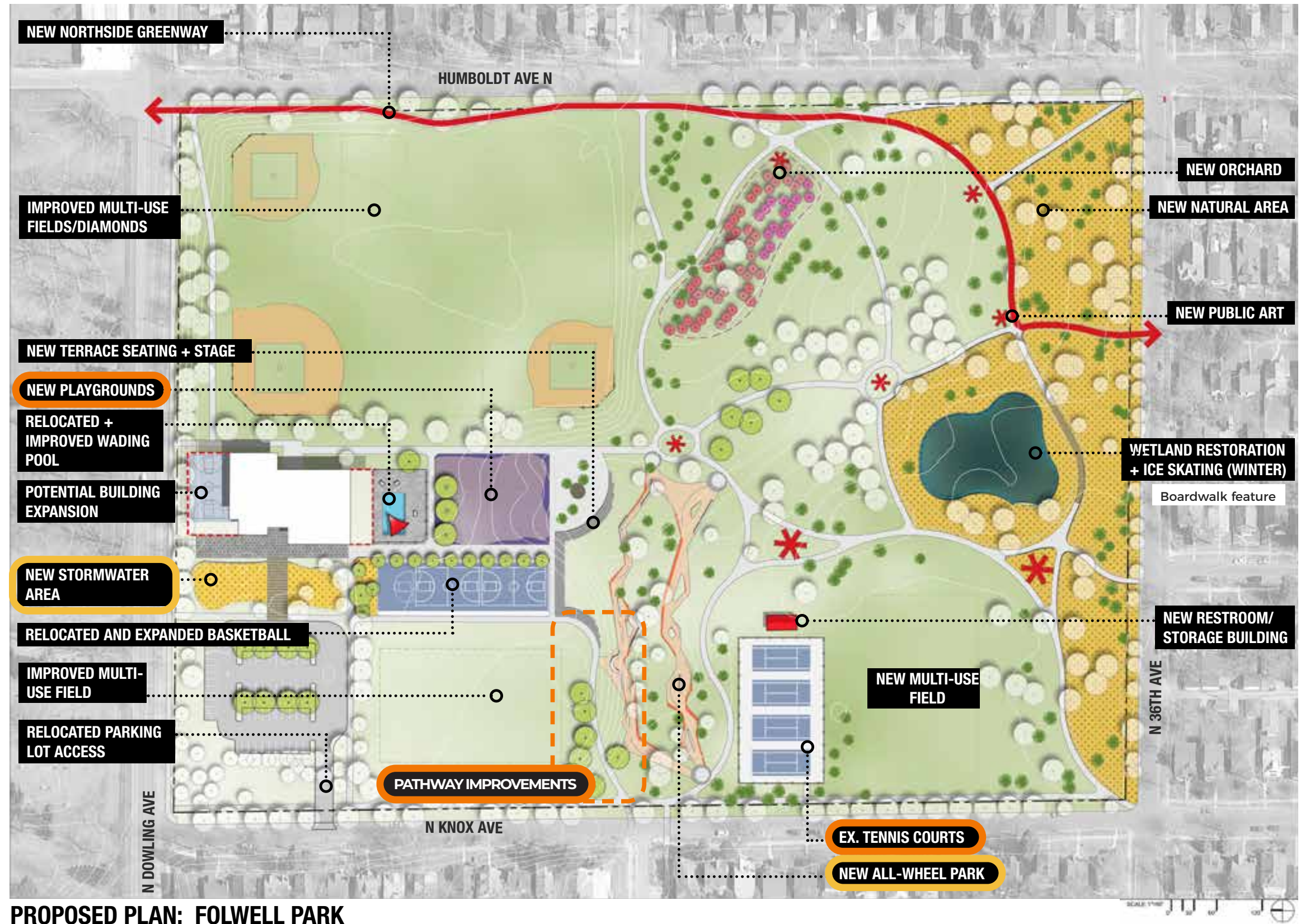
This concept design for Folwell Park was developed as part of the Minneapolis Park and Recreation Board North Service Area Master Plan, completed in 2019. Phase I improvements included new playground equipment and surfacing, new field lighting, tennis court improvements, and pathway improvements in parts of the park.

## PHASE I IMPROVEMENTS (COMPLETE)

- New playground equipment and surfacing
- Pathway improvements
- Tennis court improvements
- New field lighting

## CURRENT PHASE INITIAL SCOPE OF IMPROVEMENTS

- Improved lighting and pathway circulation
- New all-wheel park
- Stormwater management areas
- Improved picnic and seating areas



# Existing Conditions



*Rec center main entrance  
April 2023*



*Rec center plaza area from the west  
June 2023*



*Restroom building at the center of the park  
April 2023*



*Rec center and basketball courts from the east  
April 2023*



*Knox field from the south and central playground view  
April 2023*



*Old playground, future all-wheel park site  
April 2023*

# Existing Conditions

Folwell Park is a 27-acre neighborhood park within the Folwell neighborhood of the Minneapolis Park and Recreation Board North Service Area in Minneapolis.

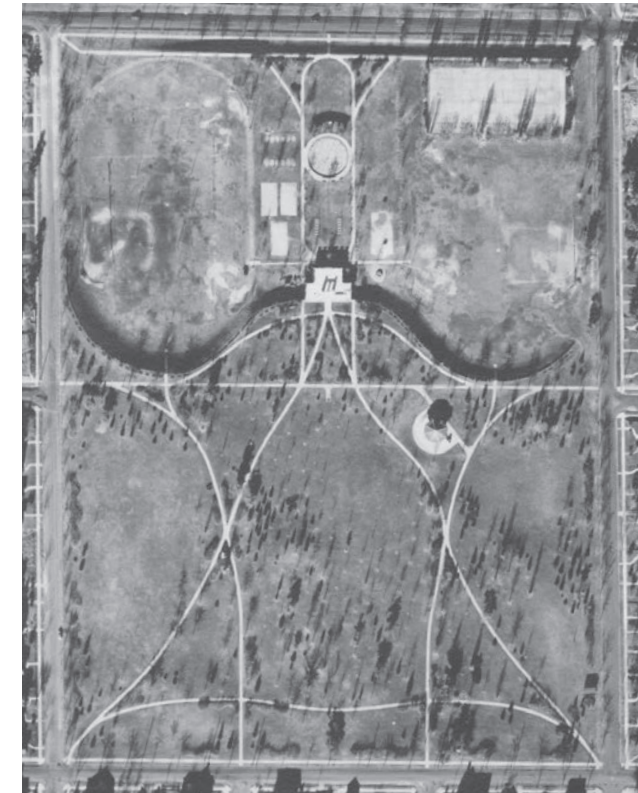
Since 1917, the Park Board has maintained and operated this park as one that provides active recreation in the northern and central areas of the park, and a pastoral wooded lawn on the southern area of the park.

Area residents use this park for active and passive recreation and neighborhood gatherings.

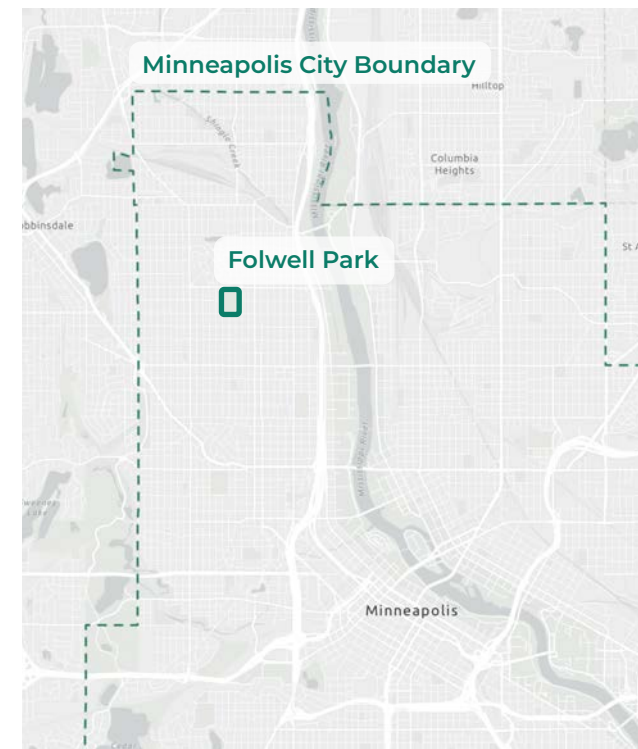


2023 Aerial

● Existing Drinking Fountains



Historic Park Aerial (1938)



Park Relationship to City Boundary

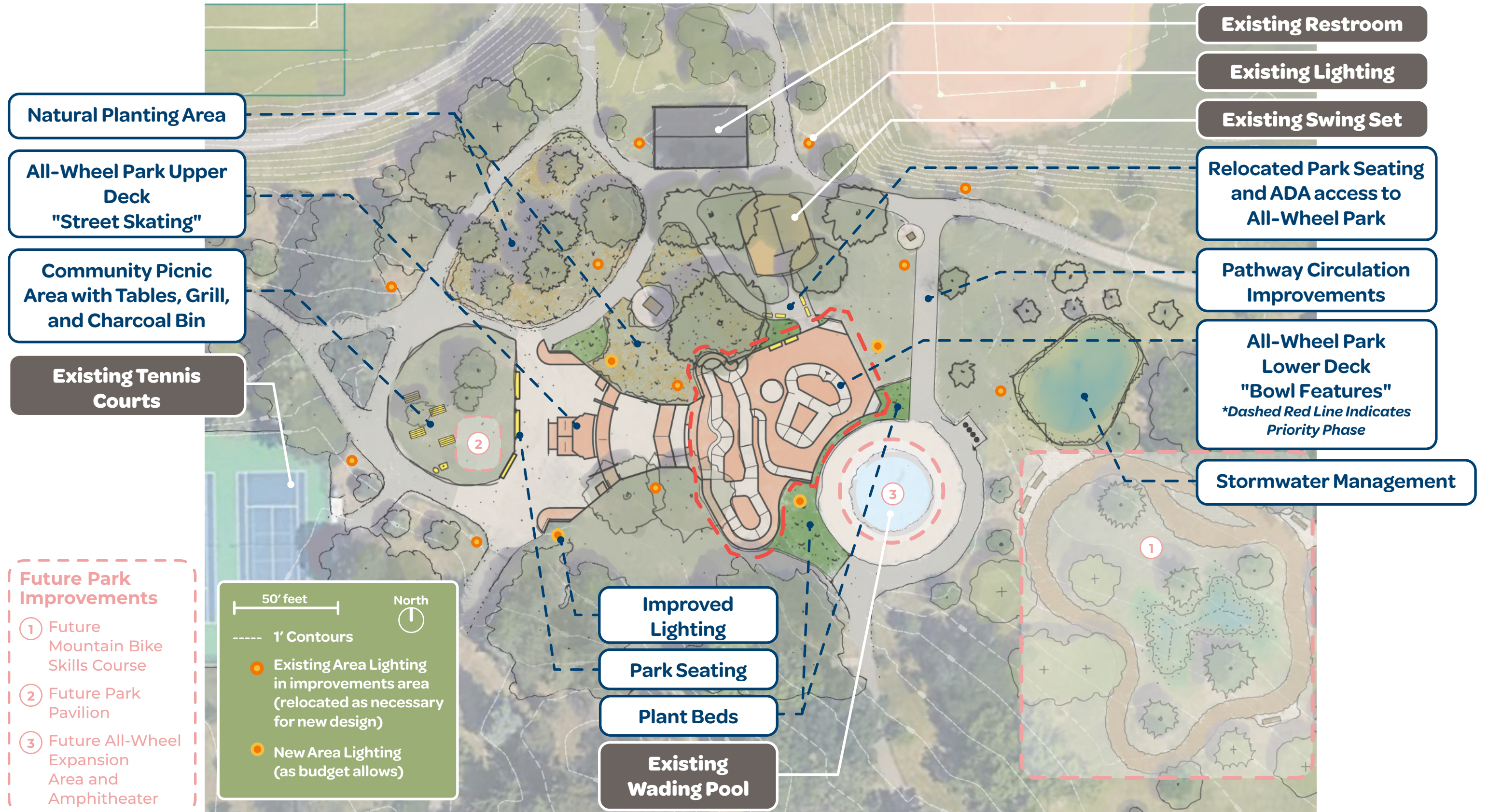
# Preferred Concept - Phase II Improvements

The preferred concept is focused around the center of the park and features the all-wheel park.

The concept includes planting beds and buffers, picnic areas, improved lighting, path and circulation improvements, and stormwater management areas.



# Preferred Concept - Phase II Improvements



# All-Wheel Park Design

**As Budget Allows  
(Potential Future Phase)**

- 1 Quarter Pipe
- 2 Ledges/Manual Pads
- 3 Flat Rail & Manual Pad
- 4 A-Frame Banks
- 5 Down Rail & Step Up
- 6 Hubba & Bump to Ledge
- 7 Curved Bank to Ledge
- 8 Banked Hip
- 9 Bank to Curb

**Current Phase Priority Portion**

- 10 Clamshell Pocket
- 11 Rolled Volcano Hip
- 12 Mini Ramp
- 13 Snake Run (4.5' to 1.5' Deep, varies)
- 14 Pump Bump
- 15 Seat Ledges
- 16 Quarter Pipes
- 17 Flow Bowl (6.5' Deep, 4' Shallow)
- 18 Love Seat Hip
- 19 Seat Ledges



**FOLWELL ALL WHEEL PARK**  
CONCEPTUAL RENDERING  
MINNEAPOLIS, MINNESOTA



# All-Wheel Park Perspective Renderings



# Project Budget

The total budget for this project phase of Folwell Park Improvements is \$1.34 million. This funds staff and consultant time, community engagement, design and engineering phases, and construction. **Out of the overall construction budget of \$1 million**, here is how the funding is being allocated based on community input and construction costs:

## COMMUNITY-BASED AMENITIES



- Benches
- Picnic tables & Grill
- Safety lighting
- Pathway improvements

## STORMWATER AND PLANTINGS



The stormwater features are not only a regulatory requirement as part of the hardscape improvements proposed in the park, but will add to the planted areas that feature native and naturalized plantings to the park space.

## ALL-WHEEL PARK



The all-wheel park is a priority in this phase of improvements and is being partially funded by a grant. The all-wheel park will feature skill areas that cater to all types of wheeled ways to have fun - skateboards, bikes, scooters, skates, wheelchairs, etc. and will be implemented to this design as budget allows.

\$200,000

\$100,000

\$700,000

