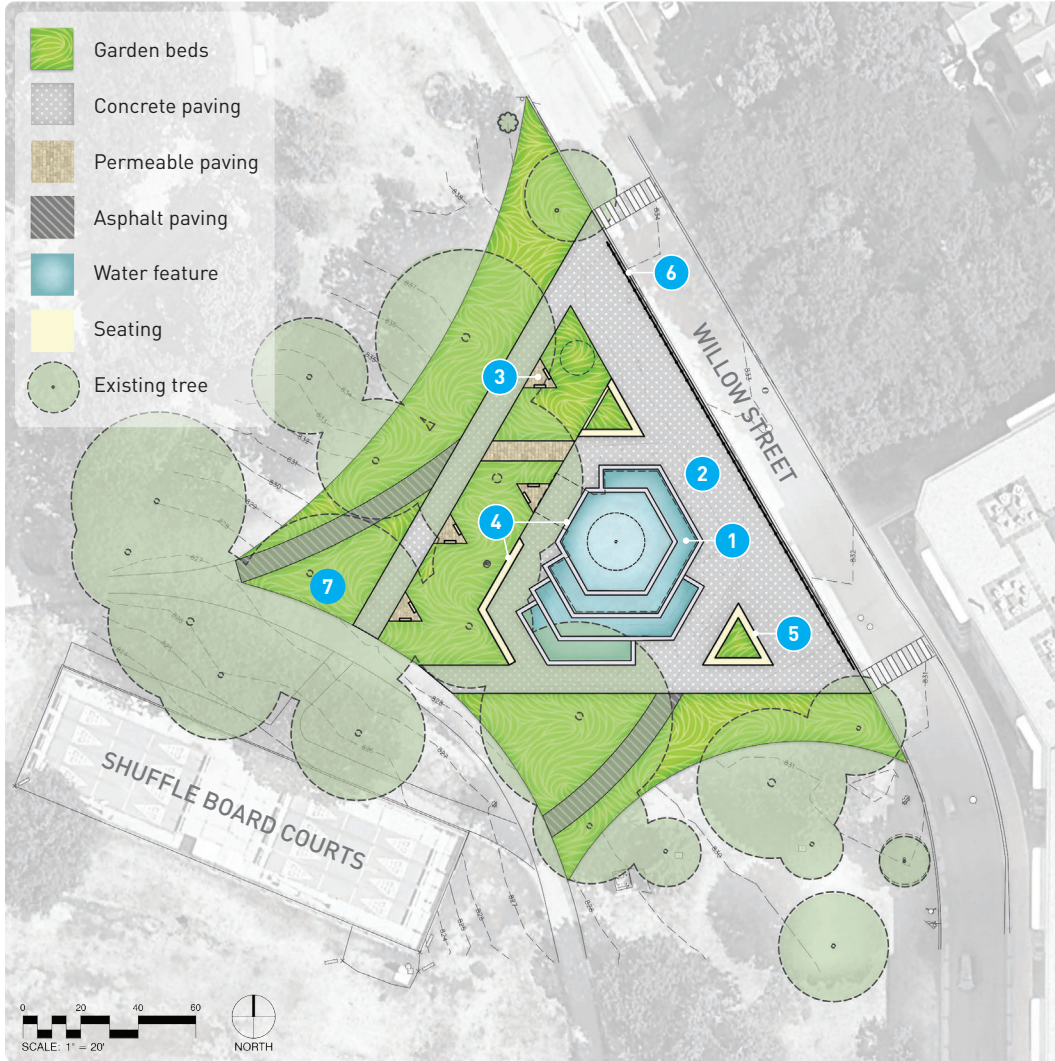


BERGER FOUNTAIN RENOVATION - **OPTION A**

CONCEPT PLAN



KEY FEATURES

- 1 Retain existing design of the fountain and multi-level pools
- 2 New plaza
- 3 New permeable-paved seating spaces with benches
- 4 New security and decorative lighting at fountain and seating
- 5 New raised planter seat walls
- 6 New bollard and chain system
- 7 Existing trees on site maintained

DANDELION FOUNTAIN HEAD & REFURBISHED MULTI-LEVEL POOLS



PERMEABLE PAVING



RAISED PLANTER SEAT WALLS



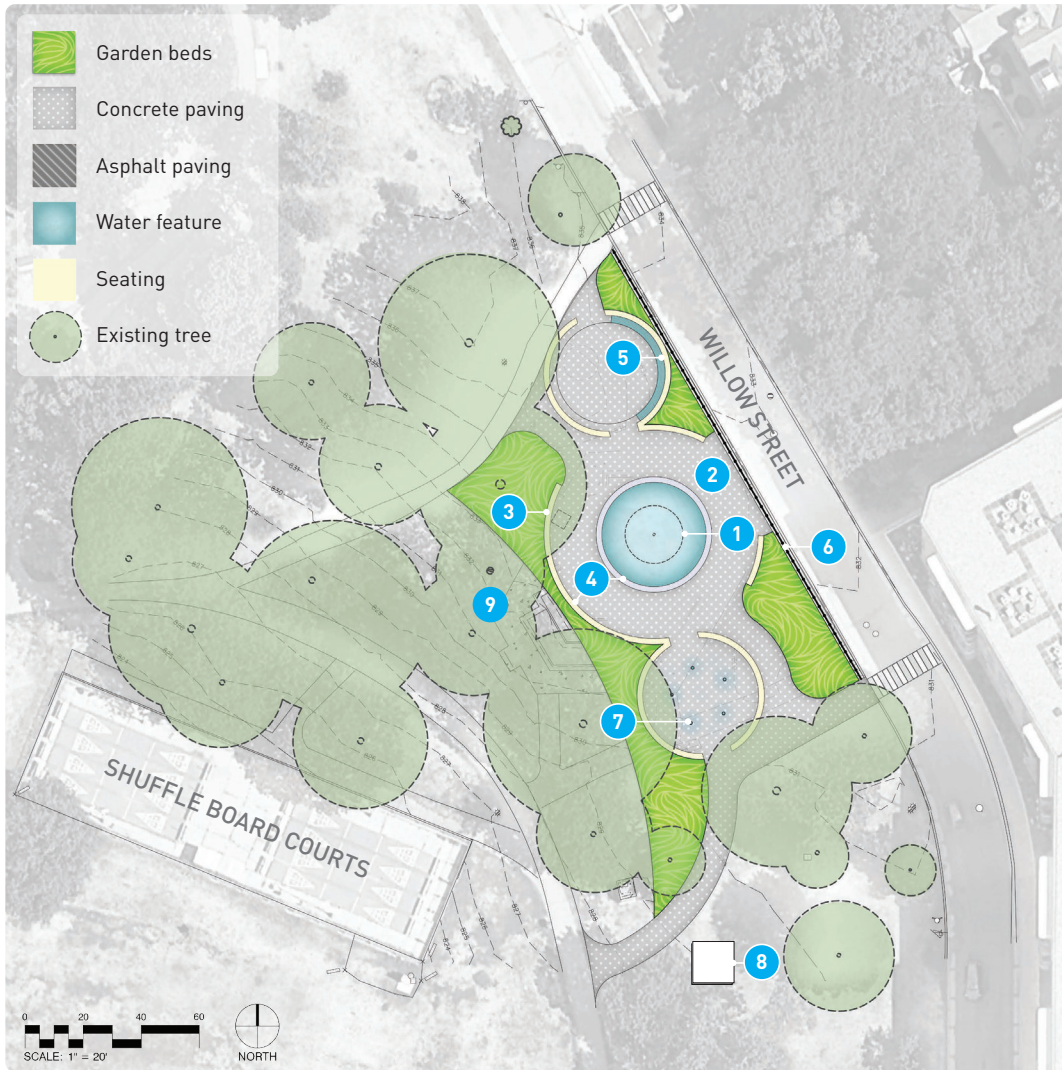
SITE FURNITURE



Concept A honors the original design of the fountain, maintaining its current location on site and cascading pools while adding new passive uses such as different seating options and a plaza. The seating provides views of the fountain from different angles. Dramatic lighting can be added to the multi-level pools. Permeable paving is provided under the tree canopy to help preserve the tree roots. The plaza is located next to the street with an opportunity to close/expand into the street for events. There is a bollard and chain fence separating the plaza from the street. Plaza could provide an opportunity for food trucks or performances. There are additional pathways proposed to connect to the existing path network. The plaza and paths are all accessible.

BERGER FOUNTAIN RENOVATION - **OPTION B**

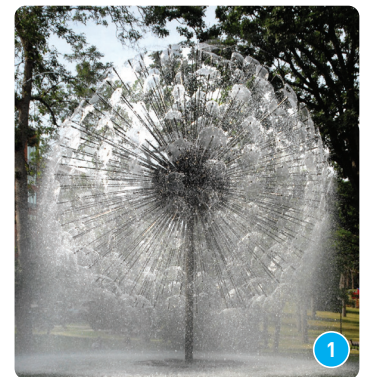
CONCEPT PLAN



KEY FEATURES

- 1 Relocated fountain closer to Willow Street with new circular single level pool
- 2 New plaza
- 3 New seat walls
- 4 New security and decorative lighting at fountain and seating
- 5 New waterfall feature
- 6 New bollard and chain system
- 7 New timed fog jets
- 8 New mechanical house
- 9 Existing trees on site maintained

DANDELION FOUNTAIN HEAD & NEW SINGLE LEVEL POOL



WATERFALL FEATURE



FOG FEATURE



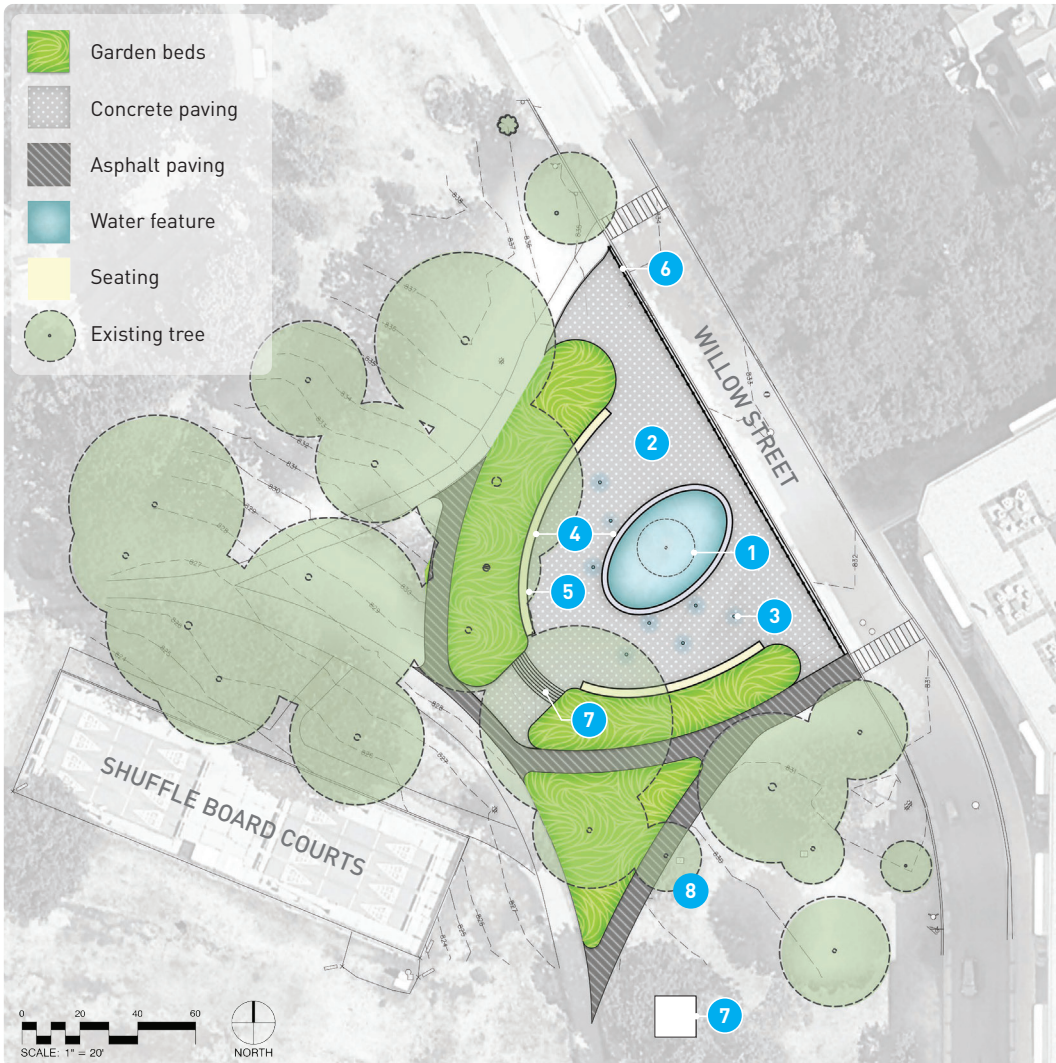
BOLLARD WITH CHAIN



Concept B reimagines the dandelion pool by removing the original cascading pools and simplifying it into one singular pool. It adds two new interactive water features, one to the north and one to the south of the fountain; people have the opportunity to connect with water through three different ways at the site. A waterfall element has been proposed near the seating area to the north and fog jets have been proposed on the south side of the fountain. Seating is provided around all three plaza locations. The fountain has been moved slightly closer to the street, away from the tree roots/leaves. This design is accessible throughout the entire plaza/walkway area.

BERGER FOUNTAIN RENOVATION - **OPTION C**

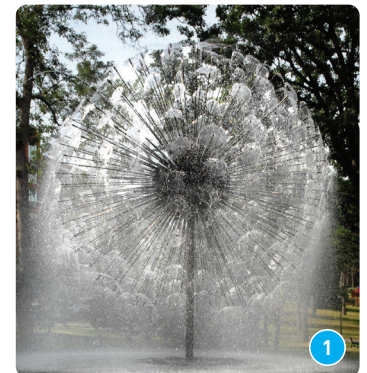
CONCEPT PLAN



KEY FEATURES

- 1 Relocated fountain closer to Willow Street with new single level pool
- 2 New plaza
- 3 New timed fog jets
- 4 New security and decorative lighting at fountain and seating
- 5 New seat walls
- 6 New bollard and chain system
- 7 New stairs
- 8 Root zones of existing trees on site impacted; removal of one tree for revised path

DANDELION FOUNTAIN HEAD & NEW SINGLE LEVEL POOL



LIGHTING



STAIRS



FOG FEATURE



Concept C reimagines the dandelion fountain by removing the cascading pools and simplifying it into one singular pool. It also adds one new interactive water feature, fog jets, which have been proposed around northeastern and southeastern sides of the fountain, providing a new, layered visual way to experience the fountain. The fountain is moved slightly closer to the street, away from the tree roots/leaves and to accommodate the topography on site, provides stairs on the southwest side of the fountain, leading down to the existing trail network. Seating is provided around the northeastern to southeastern side of the fountain. This design is accessible throughout the entire plaza and other connections except for the stairs.