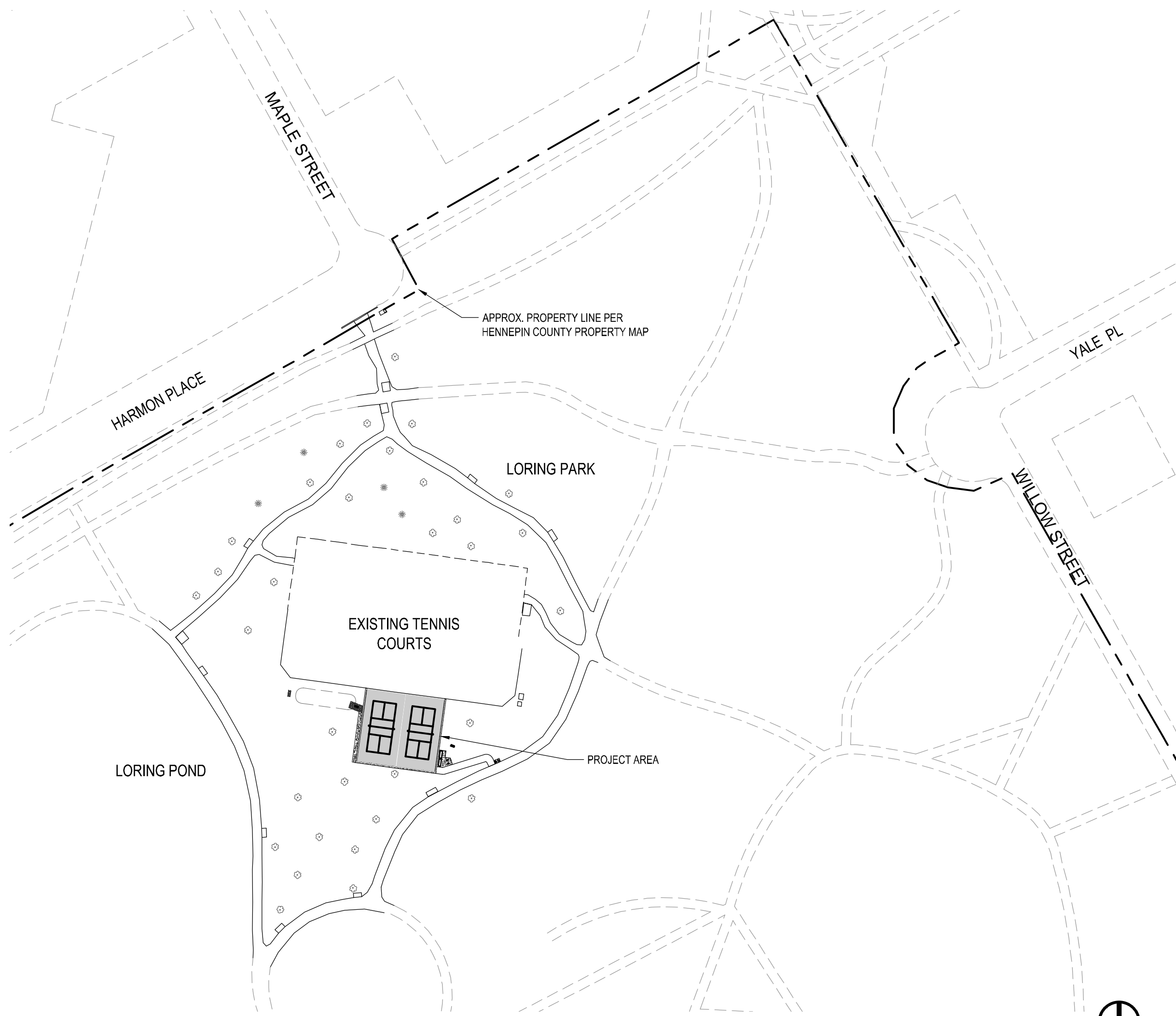


LORING PARK PICKLEBALL COURTS

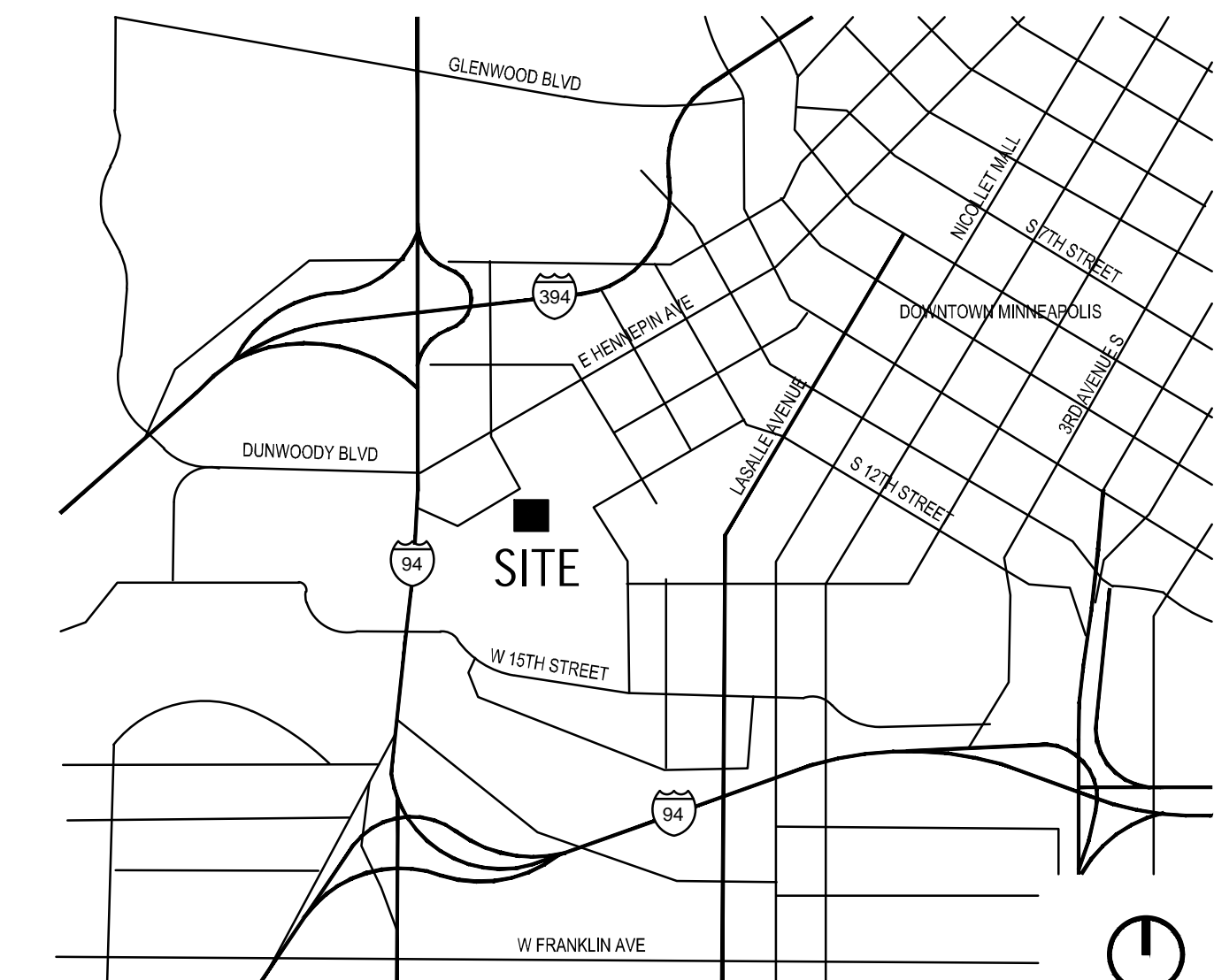
MINNEAPOLIS - MINNESOTA

BID DOCUMENTS
MARCH 02, 2023



VICINITY MAP

NOT TO SCALE



LOCATION MAP

NOT TO SCALE

PROJECT CONTACTS

OWNER	MINNEAPOLIS PARK & RECREATION BOARD 2117 WEST RIVER ROAD MINNEAPOLIS, MN 55411	ANDREW SCHILLING T (612) 499-7611
CIVIL ENGINEER	ELAN DESIGN LAB, INC. 310 4TH AVE S, SUITE 1006 MINNEAPOLIS, MN 55415	MARCELLE WESLOCK, PE T (612) 260-7980 F (612) 260-7990
LAND SURVEYOR	STONEBROOKE ENGINEERING, INC. 12279 NICOLLET AVENUE S BURNSVILLE, MN 55337	LANCE FROST T (652) 403-8803

SHEET INDEX

C-000	COVER SHEET
C-001	ALTA SURVEY
C-010	DEMOLITION PLAN
C-101	SITE AND UTILITY PLAN
C-201	GRADING AND EROSION CONTROL PLAN
C-501	DETAILS
C-502	DETAILS
C-503	DETAILS
L-101	LANDSCAPE PLAN



2117 WEST RIVER ROAD
MINNEAPOLIS, MN 55411

PROJECT
LORING PARK
PICKLEBALL COURTS
MINNEAPOLIS,
MINNESOTA

SHEET INDEX

BID DOCUMENTS
03/02/2023

ISSUE	DATE



CERTIFICATION
I hereby certify that this plan was prepared by me, or under my direct supervision, and that I am a duly Licensed Professional Engineer under the laws of the state of MINNESOTA.

Marcelle Weslock
MARCELLE J. WESLOCK DATE
REGISTRATION NO. 42323 03/02/2023

SHEET

COVER SHEET

C-000

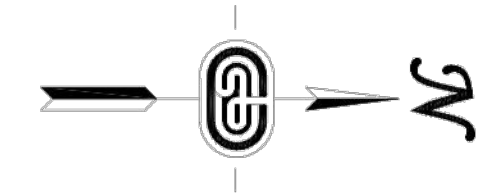
PROJECT NO.
MPR22008

TOPOGRAPHIC SURVEY

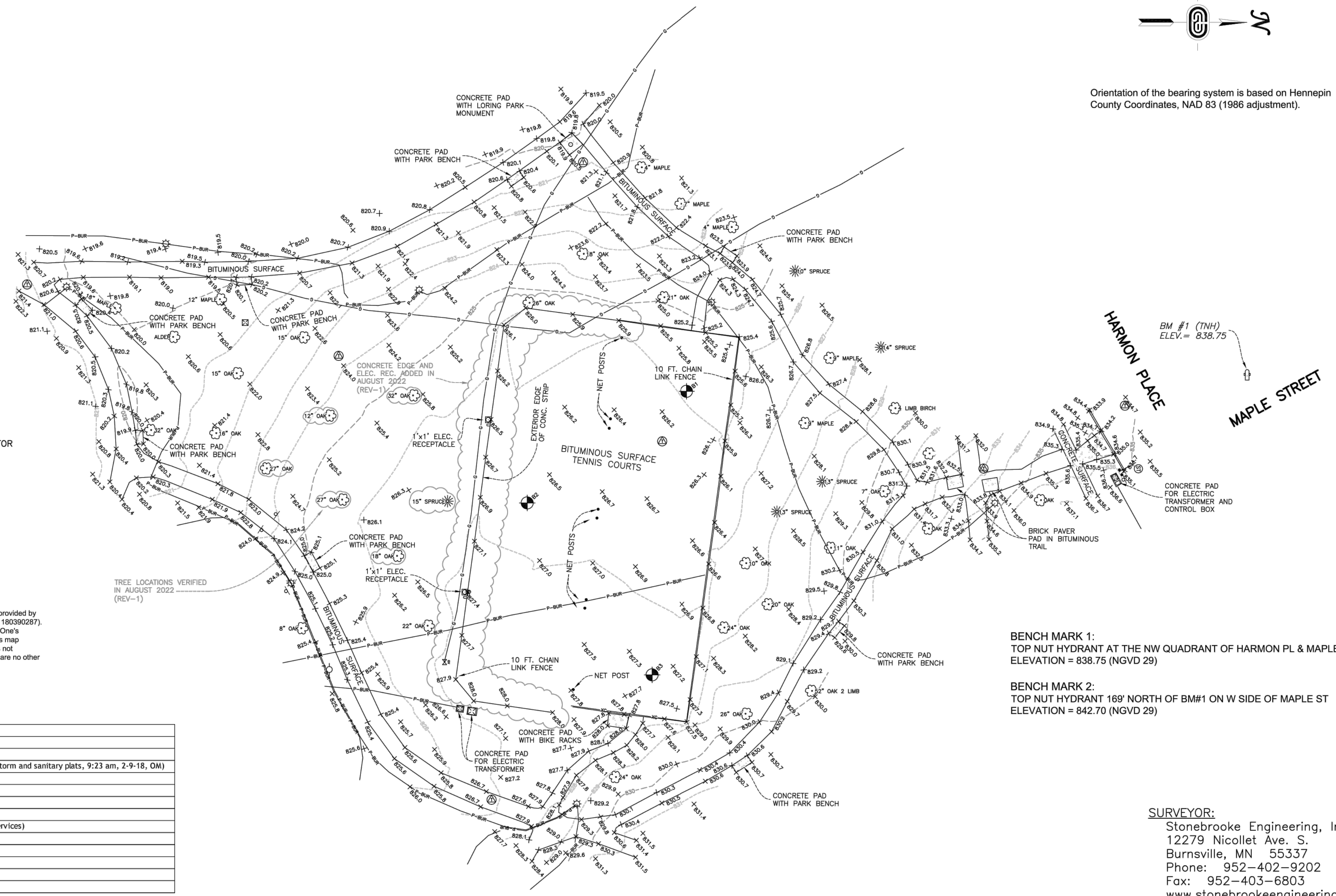
LORING PARK, MINNEAPOLIS, MN

LEGEND

	EXISTING SPOT ELEVATION
	EXISTING CONTOURS
	FIRE HYDRANT
	CATCH BASIN
	SEWER MANHOLES
	SOIL BORING
	UTILITY POLE
	UTILITY PEDESTAL
	LIGHT POLE
	SIGN
	DECIDUOUS TREE
	CONIFEROUS TREE
	GUARD POST
	CONCRETE SURFACE



Orientation of the bearing system is based on Hennepin County Coordinates, NAD 83 (1986 adjustment).



BM #1 (TNH)
ELEV. = 838.75

SURVEYOR'S NOTE:

ONLY FEATURES NOTED AS ADDED OR VERIFIED IN AUGUST 2022 WERE UPDATED FOR REVISION 1. ALL OTHER FEATURES SHOWN ARE ONLY CURRENT TO THE DATE OF ORIGINAL SURVEY. ALL SUBSEQUENT SITE IMPROVEMENTS ARE NOT REFLECTED ON THIS SURVEY DRAWING.

UTILITIES: Underground utility lines and structures are shown in an approximate way only, according to information provided by others. A request that utilities be located for this survey was made through Gopher State One Call (GSOC Ticket No. 180390287). ZoneOne Locating was also contracted to locate park board owned underground facilities in the area surveyed. ZoneOne's contact for this project is Shannon Casady (763-682-0206). The underground utility lines and structures shown on this map represent the information provided to Stonebrooke Engineering, Inc. as a result of those requests. The surveyor does not guarantee that the information provided was either complete or accurate. The surveyor does not guarantee that there are no other underground utility lines and structures, active or abandoned, on or adjacent to the subject property.

The table below lists the utility owners notified by the GSOC locate request, and their response as of 3/1/2018.

District	Company Name	Phone	Utility Types	Status
CMINNE01	CITY OF MINNEAPOLIS WATER	(612)673-5600	W	Marked
CMINNE04	CITY OF MINNEAPOLIS TRAFFIC	(612)673-5600	TS	Not yet responded
CMINNE05	CITY OF MINNEAPOLIS SEWER	(612)673-5600	S	Non-Excavation (sent storm and sanitary plats, 9:23 am, 2-9-18, OM)
COMCST03	COMCAST	(800)762-0592	TV	Clear/No conflict
CTLMN01	CENTURYLINK - CTLQL	(855)742-6062	TEL	Clear/No conflict
EXTNET01	EXTENET SYSTEMS INC	(800)778-9140	FO	Clear/No conflict
METSTM01	NRG ENERGY/MPLS ENERGY CTR	(612)349-6087	O	Clear/No conflict
MINGAS02	CENTER POINT ENERGY	(612)342-5200	G	Marked (Marked two services)
MNSDOT01	MNDOT	(651)366-5750	E	Clear/No conflict
MPLSPK01	MINNEAPOLIS PARK AND REC	(612)499-9090	E	Non-Excavation
WLMTCM01	LEVEL 3 COMMUNICATIONS	(877)366-8344	FO	Not yet responded
XCEL10	XCEL ENERGY	(800)848-7558	E,FO,TEL	Marked
ZAYO04	ZAYO BANDWIDTH	(888)267-1063	FO	Clear/No conflict

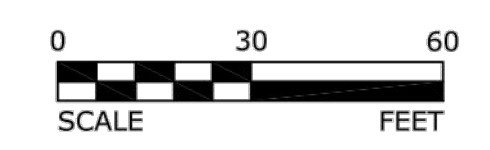
BENCH MARK 1:
TOP NUT HYDRANT AT THE NW QUADRANT OF HARMON PL & MAPLE ST
ELEVATION = 838.75 (NGVD 29)

BENCH MARK 2:
TOP NUT HYDRANT 169' NORTH OF BM#1 ON W SIDE OF MAPLE ST
ELEVATION = 842.70 (NGVD 29)

SURVEYOR:
Stonebrooke Engineering, Inc.
12279 Nicollet Ave. S.
Burnsville, MN 55337
Phone: 952-402-9202
Fax: 952-403-6803
www.stonebrookeengineering.com

Aug 03, 2022 - 1:30pm - S:\PROJECTS\SURVEY_Minneapolis_Park_&_Recreation_Board\01019 (Loring Park Additional Topographic Survey 2022) \Cadd_Files\01019_TP01.dwg

REV. NO.	DATE	BY	DESCRIPTION
1	8/3/2022	LJF	UPDATED WITH SELECTED NEW FEATURES



I HEREBY CERTIFY THAT THIS SURVEY, PLAN, OR REPORT WAS PREPARED BY ME OR UNDER MY DIRECT SUPERVISION AND THAT I AM A DULY LICENSED LAND SURVEYOR UNDER THE LAWS OF THE STATE OF MINNESOTA.

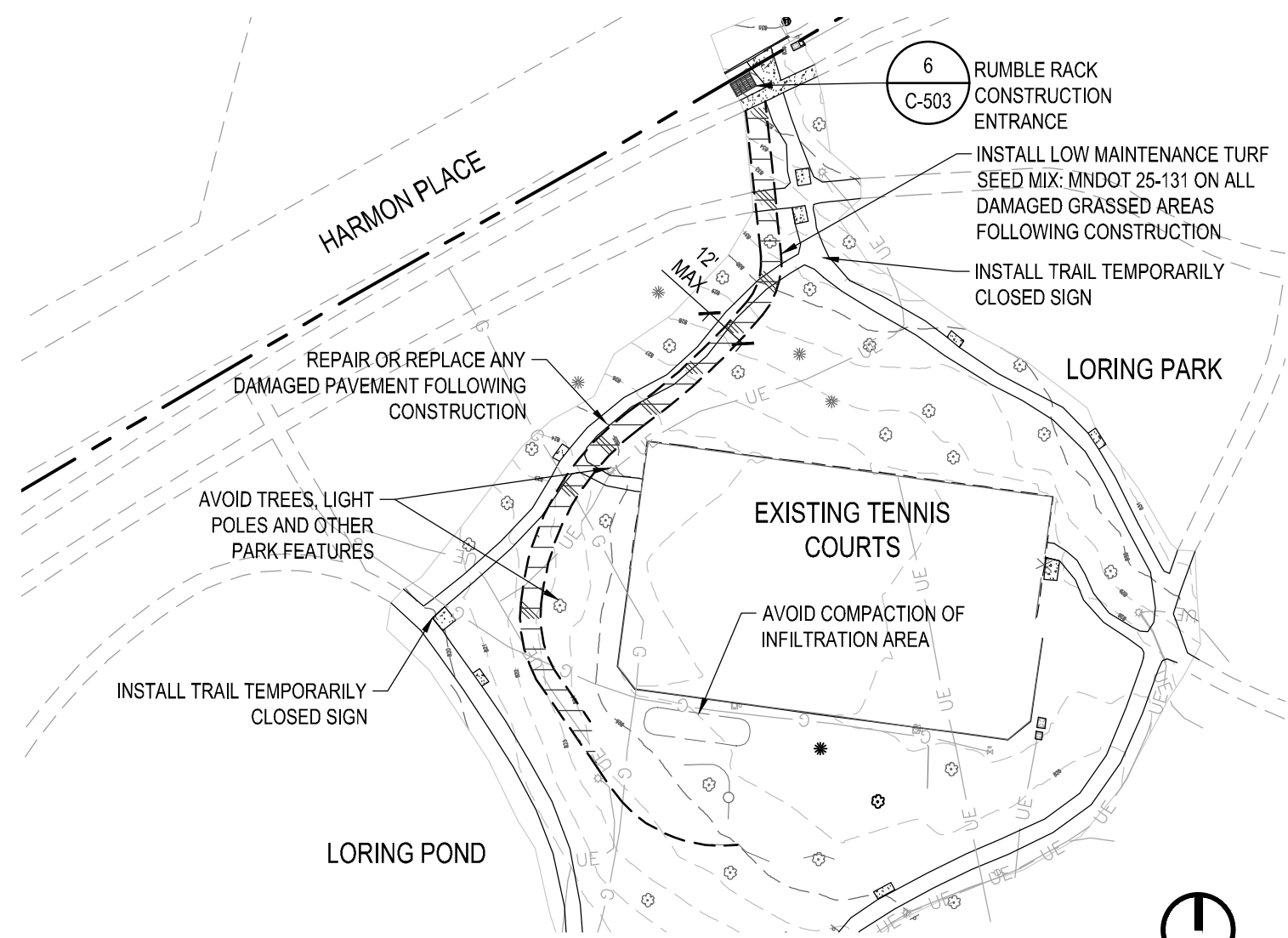
Lance Frost

NAME Lance Frost LIC. NO. 46534 DATE 03-23-2018

DESIGNED
AJM
DRAWN
JPG
CHECKED
LJF

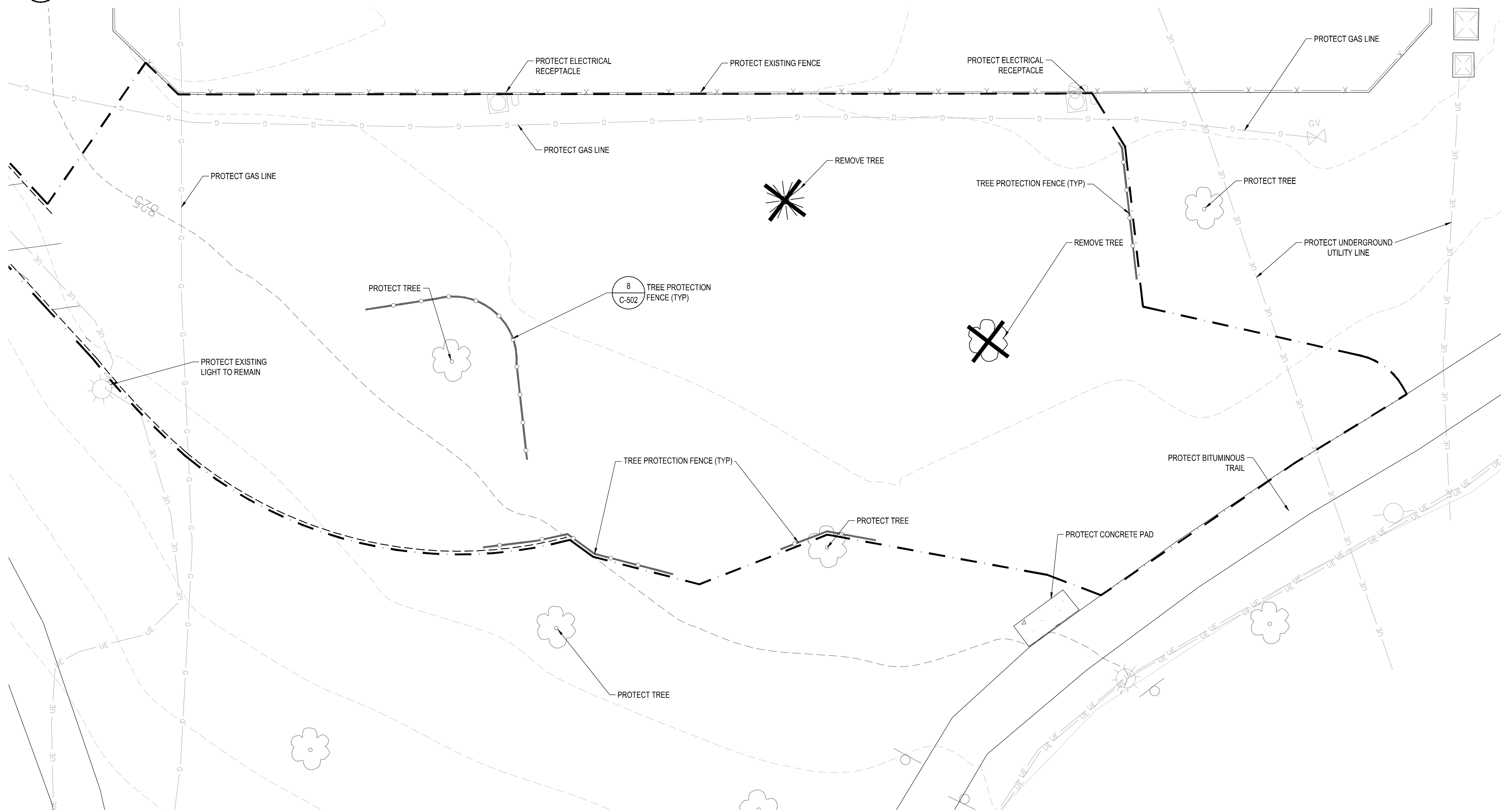


TOPOGRAPHIC SURVEY	SURVEY
Loring Park, Minneapolis, MN	
FOR: MINNEAPOLIS PARK & RECREATION BOARD	C-001



2 CONSTRUCTION ACCESS PATH
1" = 80'

NOT TO SCALE



1 DEMOLITION PLAN
1" = 10'

LEGEND

- TREE REMOVAL
- TREE PROTECTION FENCE
- CONSTRUCTION LIMITS
- CONSTRUCTION ACCESS
- MULCH ACCESS

DEMOLITION NOTES

- BACKGROUND INFORMATION AND TOPOGRAPHIC SURVEY TAKEN FROM SURVEY PERFORMED BY STONEBROOKE ENGINEERING AND SURVEYING ON MARCH 23, 2018 AND REVISED ON AUGUST 3, 2022. VERIFY ALL FIELD CONDITIONS AND UTILITY LOCATIONS PRIOR TO EXCAVATION/CONSTRUCTION. IF ANY DISCREPANCIES OR UNKNOWN UTILITIES ARE FOUND THAT IMPACT DESIGN OR IMPAIR CONSTRUCTION, THE ENGINEER AND OWNER SHOULD BE IMMEDIATELY NOTIFIED.
- EROSION CONTROL MEASURES SHALL BE IN PLACE PRIOR TO COMMENCEMENT OF DEMOLITION OPERATIONS. SEE SHEET C-201 FOR ALL EROSION CONTROL MEASURES AND APPROPRIATE STAGING.
- CONTRACTOR SHALL BRING ANY CHANGED OR UNFORESEEN CONDITIONS THAT COULD RESULT IN ADDITIONAL COST TO THE ATTENTION OF THE OWNER AND ENGINEER AS SOON AS THEY ARE DISCOVERED SO THAT THEY CAN BE PROPERLY DOCUMENTED. FAILURE TO NOTIFY OR COVERING UN-WITNESSED WORK SHALL RESULT IN REJECTION OF CLAIMS FOR ADDITIONAL COMPENSATION.
- PROTECT ALL STRUCTURES AND LANDSCAPE NOT LABELED FOR DEMOLITION FROM DAMAGE DURING CONSTRUCTION. ANY ON-SITE OR OFF-SITE AREAS DISTURBED DIRECTLY OR INDIRECTLY DUE TO CONSTRUCTION SHALL BE RETURNED TO A CONDITION EQUAL TO OR BETTER THAN THE EXISTING CONDITION. CONTRACTOR IS SOLELY RESPONSIBLE FOR ANY CIVIL PENALTIES RESULTING FROM THEIR WORK UNDER THIS CONTRACT.
- LIMIT CONSTRUCTION ACTIVITIES TO THE CONSTRUCTION LIMITS SHOWN ON THE PLAN. IF WORK NEEDS TO EXTEND TO PUBLIC STREETS IT IS THE CONTRACTOR'S RESPONSIBILITY TO APPLY FOR ALL PERMITS, PREPARE ALL DRAWING AND PAY ALL FEES AND COST. ALL CONSTRUCTION ACTIVITIES SHALL COMPLY WITH LOCAL ORDINANCES.
- PROVIDE NECESSARY BARRICADES, SUFFICIENT LIGHTS, SIGNS AND OTHER TRAFFIC CONTROL METHODS AS MAY BE NECESSARY FOR THE PROTECTION AND SAFETY OF THE PUBLIC AND MAINTAIN THROUGHOUT THE LIFE OF THE PROJECT.
- EXISTING MATERIALS SHALL BE REMOVED FROM THE SITE IN ACCORDANCE WITH ALL LOCAL, COUNTY, STATE AND FEDERAL REQUIREMENTS. ABATEMENT OF ANY MATERIALS DETERMINED BY THE ENVIRONMENTAL ENGINEER TO BE HAZARDOUS SHALL BE REMOVED IN ACCORDANCE WITH APPROPRIATE REQUIREMENTS.
- NO DEMOLITION MATERIALS SHALL BE DISPOSED OF ON-SITE. ALL DEBRIS SHALL BE HAULED OFF-SITE TO A DISPOSAL AREA APPROVED BY APPROPRIATE GOVERNMENTAL AUTHORITIES FOR THE HANDLING OF DEMOLITION DEBRIS. WORK SITE SHALL BE LEFT IN A CONDITION THAT MINIMIZES EROSION POTENTIAL ON A NIGHTLY BASE.
- RELOCATION OF UTILITIES SHALL BE COORDINATED WITH THE LOCAL UTILITY COMPANIES. ELECTRIC HANDHOLES, PULLBOXES, POWERPOLES, GUYLINES, AND STRUCTURES DISTURBED BY CONSTRUCTION ACTIVITIES TO BE RESTORED IN ACCORDANCE WITH SPECIFIC OWNER REQUIREMENTS AT CONTRACTORS EXPENSE.
- ALL TREE PROTECTION FENCES AND EROSION CONTROL MEASURES SHALL BE INSTALLED PRIOR TO COMMENCEMENT OF TREE REMOVAL AND VEGETATION CLEARING.



2117 WEST RIVER ROAD
MINNEAPOLIS, MN 55411

PROJECT

LORING PARK
PICKLEBALL COURTS
MINNEAPOLIS,
MINNESOTA

SHEET INDEX

BID DOCUMENTS
03/02/2023

ISSUE	DATE

Elan
DESIGN LAB
Civil Engineering | Landscape Architecture
310 4TH AVENUE S, SUITE 1006
MINNEAPOLIS, MN 55415
p 612.260.7980 | www.elanlab.com
f 612.260.7990

CERTIFICATION

I heroby certify that this plan was prepared by me, or under my direct supervision, and that I am a duly Licensed Professional Engineer under the laws of the state of MINNESOTA.

Marcelle J. Weslock
MARCELLE J. WESLOCK DATE
REGISTRATION NO. 42323 03/02/2023

SHEET

DEMOLITION PLAN

C-010

PROJECT NO.
MPR22008

811
Know what's below.
Call before you dig.
SCALE IN FEET
10 30

CITY OF MINNEAPOLIS EROSION CONTROL NOTES

- CONTRACTOR MUST CALL A CONSTRUCTION START 48 HOURS PRIOR TO ANY LAND DISTURBANCE 612-673-3867. FAILURE TO DO SO MAY RESULT IN FINES, THE REVOCATION OF PERMIT AND A STOP WORK ORDER BEING ISSUED.
- INSTALL PERIMETER EROSION CONTROL AT THE LOCATIONS SHOWN ON THE PLANS PRIOR TO THE COMMENCEMENT OF ANY LAND DISTURBANCE OR CONSTRUCTION ACTIVITIES.
- REMOVE ALL SOILS AND SEDIMENTS TRACKED OR OTHERWISE DEPOSITED ONTO PUBLIC AND PRIVATE PAVEMENT AREAS. REMOVAL SHALL BE ON A DAILY BASIS WHEN TRACKING OCCURS AND MAY BE ORDERED BY MINNEAPOLIS INSPECTORS AT ANY TIME IF CONDITIONS WARRANT. SWEEPING SHALL BE MAINTAINED THROUGHOUT THE DURATION OF THE CONSTRUCTION AND DONE IN A MANNER TO PREVENT DUST BEING BLOWN TO ADJACENT PROPERTIES.
- INSTALL INLET PROTECTION AT ALL PUBLIC AND PRIVATE CATCH BASIN INLETS, WHICH RECEIVE RUNOFF FROM THE DISTURBED AREAS. CONTRACTOR SHALL CLEAN, REMOVE SEDIMENT OR REPLACE STORM DRAIN INLET PROTECTION DEVICES ON A ROUTINE BASIS SUCH THAT THE DEVICES ARE FULLY FUNCTIONAL FOR THE NEXT RAIN EVENT. SEDIMENT DEPOSITED IN AND/OR PLUGGING DRAINAGE SYSTEMS IS THE RESPONSIBILITY OF THE CONTRACTOR. HAY BALES OR FILTER FABRIC WRAPPED GRATES ARE NOT ALLOWED FOR INLET PROTECTION.
- LOCATE SOIL OR DIRT STOCKPILES NO LESS THAN 25 FEET FROM ANY PUBLIC OR PRIVATE ROADWAY OR DRAINAGE CHANNEL IF REMAINING FOR MORE THAN SEVEN DAYS. STABILIZE THE STOCKPILES BY MULCHING, VEGETATIVE COVER, TARPS, OR OTHER MEANS. CONTROL EROSION FROM ALL STOCKPILES BY PLACING SILT BARRIERS AROUND THE PILES. TEMPORARY STOCKPILES LOCATED ON PAVED SURFACE MUST BE NO LESS THAN TWO FEET FROM THE DRAINAGE/GUTTER LINE AND SHALL BE COVERED IF LEFT MORE THAN 24 HOURS.
- MAINTAIN ALL TEMPORARY EROSION AND SEDIMENT CONTROL DEVICES IN PLACE UNTIL THE CONTRIBUTING DRAINAGE AREA HAS BEEN STABILIZED. INSPECT TEMPORARY EROSION AND SEDIMENT CONTROL DEVICES ON A DAILY BASIS AND REPLACE DETERIORATED, DAMAGED, OR ROTTED EROSION CONTROL DEVICES IMMEDIATELY.
- TEMPORARILY OR PERMANENTLY STABILIZE ALL CONSTRUCTION AREAS WHICH HAVE UNDERGONE FINAL GRADING, AND ALL AREAS IN WHICH GRADING OR SITE BUILDING CONSTRUCTION OPERATIONS ARE NOT ACTIVELY UNDERWAY AGAINST EROSION DUE TO RAIN, WIND AND RUNNING WATER WITHIN 7-14 DAYS. USE SEED AND MULCH, EROSION CONTROL, MATTING, AND/OR SODDING AND STAKING IN GREEN SPACE AREAS. REMOVE ALL TEMPORARY SYNTHETIC, STRUCTURAL, NON-BIODEGRADABLE EROSION AND SEDIMENT CONTROL DEVICES AFTER THE SITE HAS UNDERGONE FINAL STABILIZATION WITH PERMANENT VEGETATION ESTABLISHMENT. FINAL STABILIZATION FOR PURPOSES OF THIS REMOVAL IS 90% ESTABLISHED COVER OVER DENUDE AREA.
- CHANGES TO APPROVED EROSION CONTROL PLAN MUST BE APPROVED BY THE EROSION CONTROL INSPECTOR PRIOR TO IMPLEMENTATION. CONTRACTOR TO PROVIDE INSTALLATION AND DETAILS FOR ALL PROPOSED ALTERNATE TYPE DEVICES.
- IF DEWATERING OR PUMPING OF WATER IS NECESSARY, THE CONTRACTOR IS RESPONSIBLE FOR OBTAINING ANY NECESSARY PERMITS AND/OR APPROVALS PRIOR TO DISCHARGE OF ANY WATER FROM THE SITE. IF THE DISCHARGE FROM THE DEWATERING OR PUMPING PROCESS IS TURBID OR CONTAINS SEDIMENT LADEN WATER, IT MUST BE TREATED THROUGH THE USE OF SEDIMENT TRAPS, VEGETATIVE FILTER STRIPS, OR OTHER SEDIMENT REDUCING MEASURES SUCH THAT THE DISCHARGE IS NOT VISIBLY DIFFERENT FROM THE RECEIVING WATER. ADDITIONAL EROSION CONTROL MEASURES MAY BE REQUIRED AT THE DISCHARGE POINT TO PREVENT SCOUR EROSION. THE CONTRACTOR SHALL PROVIDE A DEWATERING/PUMPING PLAN TO THE EROSION CONTROL INSPECTOR PRIOR TO INITIATING DEWATERING ACTIVITIES.

EROSION CONTROL NOTES

EROSION PREVENTION MEASURES - GENERAL

- THE CONTRACTOR SHALL PLAN AND IMPLEMENT APPROPRIATE CONSTRUCTION PRACTICE AND CONSTRUCTION PHASING TO MINIMIZE EROSION AND RETAIN VEGETATION WHENEVER POSSIBLE.
- ALL AREAS NOT TO BE DISTURBED SHALL BE DELINEATED WITH FLAGS, STAKES, SIGNS, OR OTHER MEANS NECESSARY TO PROTECT THESE AREAS BEFORE CONSTRUCTION BEGINS ON THE SITE.

SEDIMENT CONTROL MEASURES AND TIMING - GENERAL

- SEDIMENT CONTROL MEASURES SHALL BE ESTABLISHED ON ALL DOWN GRADIENT PERIMETERS BEFORE ANY UP-GRADIENT LAND DISTURBING ACTIVITIES BEGIN. THESE MEASURES SHALL REMAIN IN PLACE UNTIL FINAL STABILIZATION HAS BEEN ESTABLISHED.
- ALL STORM DRAIN INLETS AND CULVERT INLETS SHALL BE PROTECTED BY AN APPROPRIATE BMP DURING CONSTRUCTION UNTIL ALL SOURCES WITH POTENTIAL FOR DISCHARGING TO THE INLET HAS BEEN STABILIZED. INLET AND CULVERT PROTECTION SHALL CONFORM TO THE MNDOT SPECIFICATIONS 2573 AND 3891.
- STOCK PILES SHALL BE PROVIDED WITH AN EFFECTIVE SEDIMENT PERIMETER CONTROL AND SHALL NOT BE PLACED IN ANY TYPE OF SURFACE WATER OR DRAINAGEWAY.

FINAL STABILIZATION

FINAL STABILIZATION SHALL BE PERFORMED IN ACCORDANCE WITH MNDOT SPECIFICATION 2515 AND SHALL BE CONSIDERED COMPLETE WHEN:

- ALL SOIL DISTURBING ACTIVITIES HAVE BEEN COMPLETED.
- ALL EXPOSED SOILS HAVE BEEN UNIFORMLY STABILIZED WITH AT LEAST 90% VEGETATION COVERAGE.
- ALL DRAINAGE DITCHES, PONDS AND ALL STORM WATER CONVEYANCE SYSTEMS HAVE BEEN CLEARED OF SEDIMENT AND STABILIZED TO PRECLUDE EROSION.
- ALL TEMPORARY BMP'S HAVE BEEN REMOVED AND PROPERLY DISPOSED.

CONSTRUCTION SEQUENCING

- INSTALL TEMPORARY PERIMETER FENCE AND SILT FENCE AROUND SITE PERIMETER TO BE DISTURBED. INSTALL TREE PROTECTION FENCES AROUND TREES TO BE PRESERVED.
- INSTALL CONSTRUCTION ENTRANCE AND MULCH TO DESIGNATED CONSTRUCTION ACCESS PATH TO MINIMIZE DAMAGE TO ASPHALT PATH, LAWN AND PARK FEATURES.
- PERFORM REQUIRED TESTING OF INFILTRATION RATE AT BOTTOM OF INFILTRATION BMP PER GRADING NOTE 3.
- PERFORM GRADING AND INSTALL UTILITIES.
- INSTALL PAVEMENT AND FENCING.
- INSTALL TREES, SHRUBS, AND OTHER LANDSCAPE MATERIALS. SEED OR SOD ALL REMAINING DISTURBED AREAS.
- AFTER ALL CONTRIBUTING AREAS ARE STABILIZED, REMOVE PERIMETER CONTROL AND INLET PROTECTION.

INSPECTION AND MAINTENANCE

- ALL SEDIMENT BARRIERS INCLUDING SILT FENCE, FIBER LOGS, AND SIMILAR DEVICES MUST BE REPAIRED/REPLACED OR SUPPLEMENTED WHEN THEY BECOME NONFUNCTIONAL OR THE SEDIMENT REACHES 1/3 OF THE BARRIER HEIGHT. THESE REPAIRS SHALL BE MADE WITHIN 24 HOURS OF DISCOVERY.
- TEMPORARY AND PERMANENT SEDIMENT BASINS MUST BE DRAINED AND THE SEDIMENT REMOVED WHEN THE DEPTH OF SEDIMENT COLLECTED IN THE BASIN REACHES 1/2 THE STORAGE VOLUME. DRAINAGE AND REMOVAL MUST BE COMPLETED WITHIN 72 HOURS OF DISCOVERY.
- SURFACE WATERS, INCLUDING DRAINAGE DITCHES AND CONVEYANCE SYSTEMS, MUST BE INSPECTED FOR EVIDENCE OF EROSION AND SEDIMENT DEPOSITION. THE CONTRACTOR SHALL REMOVE ALL DELTAS AND SEDIMENT DEPOSITED IN SURFACE WATERS, INCLUDING DRAINAGEWAYS, CATCH BASINS, AND OTHER DRAINAGE SYSTEMS. THE CONTRACTOR SHALL RE-STABILIZE THE AREAS WHERE SEDIMENT REMOVAL RESULTS IN EXPOSED SOIL. REMOVAL AND STABILIZATION MUST TAKE PLACE WITHIN 7 DAYS OF DISCOVERY, UNLESS PRECLUDED BY LEGAL, REGULATORY OR PHYSICAL CONSTRAINTS. THE CONTRACTOR (CONTRACTOR) IS RESPONSIBLE FOR CONTACTING ALL LOCAL, REGIONAL, STATE AND FEDERAL AUTHORITIES AND RECEIVING ANY APPLICABLE PERMITS, PRIOR TO CONDUCTING ANY WORK.

- CONSTRUCTION SITE VEHICLE EXIT LOCATIONS SHALL BE INSPECTED DAILY FOR EVIDENCE OF OFF-SITE SEDIMENT TRACKING ONTO PAVED SURFACES. TRACKED SEDIMENT MUST BE REMOVED FROM ALL PAVED SURFACES WITHIN 24 HOURS OF DISCOVERY.
- THE CONTRACTOR IS RESPONSIBLE FOR THE OPERATION AND MAINTENANCE OF TEMPORARY AND PERMANENT WATER QUALITY BMP'S, AS WELL AS EROSION AND SEDIMENT CONTROL BMP'S FOR THE DURATION OF THE CONSTRUCTION WORK AT THE SITE.
- IF SEDIMENT ESCAPES THE CONSTRUCTION SITE OFF-SITE ACCUMULATIONS OF SEDIMENT MUST BE REMOVED IN A MANNER AND AT A FREQUENCY SUFFICIENT TO MINIMIZE OFF-SITE IMPACTS.

POLLUTION PREVENTION MANAGEMENT MEASURES

- THE CONTRACTOR SHALL BE RESPONSIBLE FOR ALL POLLUTION PREVENTION MANAGEMENT MEASURES. THE CONTRACTOR IS RESPONSIBLE FOR INFORMING ALL VISITORS AND/OR PERSONNEL ON-SITE OF THE POLLUTION PREVENTION MANAGEMENT MEASURES.
- THE CONTRACTOR IS RESPONSIBLE FOR THE PROPER DISPOSAL, IN COMPLIANCE WITH MPCA DISPOSAL REQUIREMENTS, OF ALL SOLID OR LIQUID WASTE AND HAZARDOUS MATERIALS ON-SITE.
- CONCRETE TRUCKS SHALL NOT BE ALLOWED TO WASH OUT OR DISCHARGE SURPLUS CONCRETE OR DRUM WASH WATER ON-SITE, UNLESS DONE IN AN ENGINEERED LEAK-PROOF CONTAINMENT SYSTEM. THE ENGINEERED SYSTEM PROVIDED BY THE CONTRACTOR MUST INCLUDE SITE DRAWINGS AND WRITTEN ASSURANCE THAT THE SYSTEM WILL WORK AS DESIGNED AND LEAVE NO DISCHARGE OF CONCRETE OR CONCRETE RESIDUE POTENTIAL TO WATERS OF THE STATE DURING A MINIMUM OF A 100-YEAR STORM EVENT. A SIGN MUST BE INSTALLED ADJACENT TO EACH WASHOUT SYSTEM TO INFORM CONCRETE EQUIPMENT CONTRACTORS TO UTILIZE THE PROPER FACILITIES. THE CONCRETE WASHOUT CONTAINMENT SYSTEM AND ALL RELATED ITEMS SHALL BE CONSIDERED INCIDENTAL TO THE PROJECT BID.
- ALL NONHAZARDOUS WASTE MATERIALS SHALL BE COLLECTED AND STORED IN A SECURELY LIDDED METAL DUMPSTER OR OTHER APPROVED CONTAINMENT METHOD AT THE END OF EACH DAY. ANY ALTERNATIVE TO A METAL DUMPSTER MUST BE SUBMITTED IN WRITING FOR APPROVAL BY THE PROJECT ENGINEER. THE DUMPSTER SHALL BE EMPTIED AS NECESSARY TO FUNCTION AS INTENDED FOR DEBRIS COLLECTION. NO CONSTRUCTION GARBAGE OR WASTE MATERIAL SHALL BE BURIED ON-SITE.
- A LICENSED SANITARY WASTE MANAGEMENT CONTRACTOR SHALL COLLECT ALL SANITARY WASTE FROM THE PORTABLE UNITS AT A RATE NECESSARY TO MAINTAIN DESIGNED FUNCTION.
- ALL FERTILIZERS SHALL BE STORED IN A COVERED SHELTER. PARTIALLY USED BAGS SHALL BE TRANSFERRED TO A SEALABLE BIN TO REDUCE THE CHANCE OF SPILLAGE.
- EXTERNAL WASHING OF TRUCKS AND OTHER CONSTRUCTION VEHICLES AND ENGINE DEGREASING ARE PROHIBITED AT THE CONSTRUCTION SITE. ALL VEHICLES ON-SITE SHALL BE MONITORED FOR LEAKS AND RECEIVE REGULAR PREVENTION MAINTENANCE TO REDUCE THE CHANCE OF LEAKAGE. PETROLEUM PRODUCTS SHALL BE STORED IN TIGHTLY SEALED CONTAINERS, WHICH ARE CLEARLY LABELED. SPILL KITS SHALL BE INCLUDED WITH ALL FUELING SOURCES AND MAINTENANCE ACTIVITIES. SECONDARY CONTAINMENT MEASURES SHALL BE INSTALLED AND MAINTAINED BY THE CONTRACTOR.
- ANY ASPHALT SUBSTANCES USED ON-SITE SHALL BE APPLIED IN ACCORDANCE WITH MANUFACTURER'S RECOMMENDATIONS.
- ALL PAINT CONTAINERS AND CURING COMPOUNDS SHALL BE TIGHTLY SEALED AND STORED WHEN NOT REQUIRED FOR USE. EXCESS PAINT AND/OR CURING COMPOUNDS SHALL NOT BE DISCHARGED INTO THE STORM SEWER SYSTEM AND SHALL BE PROPERLY DISPOSED OF ACCORDING TO MANUFACTURER'S INSTRUCTION.
- MATERIALS AND EQUIPMENT NECESSARY FOR SPILL CLEAN-UP SHALL BE KEPT IN AN ENCLOSED TRAILER OR SHED ON-SITE. EQUIPMENT SHALL INCLUDE, BUT NOT LIMITED TO, BROOMS, MOPS, DUST PANS, RAGS, GLOVES, GOGGLES, ABSORBENT (KITTY LITTER) OIL ABSORBENT BOOMS AND DIAPERS AND BUCKETS.
- ALL SPILLS SHALL BE CONTAINED AND CLEANED UP IMMEDIATELY UPON DISCOVERY. SPILLS LARGE ENOUGH TO REACH THE STORM WATER CONVEYANCE SYSTEM SHALL BE REPORTED TO THE MINNESOTA DUTY OFFICER AT 1-800-422-0798.

GENERAL NOTES:

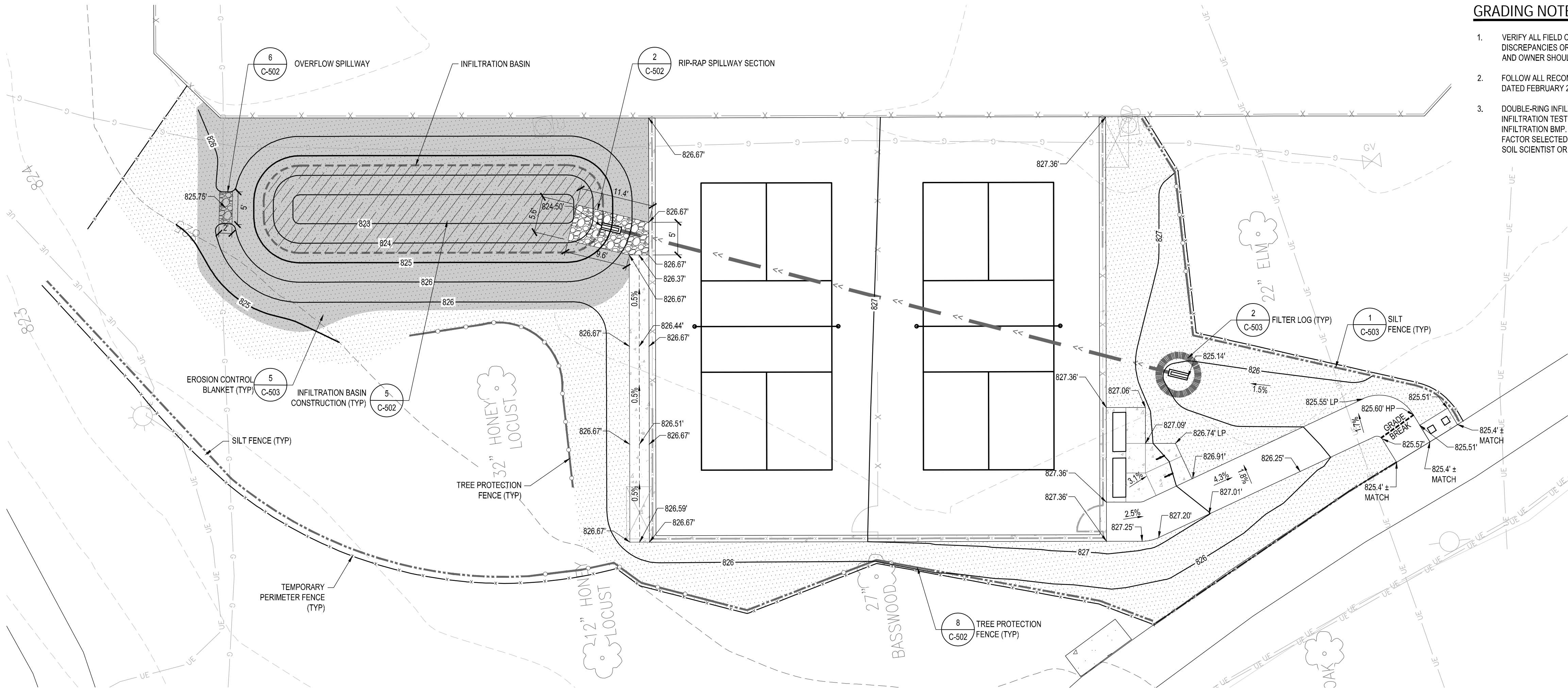
- REFER TO LANDSCAPE PLANS FOR REVEGETATION REQUIREMENTS.

GRADING NOTES

- VERIFY ALL FIELD CONDITIONS AND UTILITY LOCATIONS PRIOR TO EXCAVATION/CONSTRUCTION. IF ANY DISCREPANCIES OR UNKNOWN UTILITIES ARE FOUND THAT IMPACT DESIGN OR IMPAIR CONSTRUCTION, THE ENGINEER AND OWNER SHOULD BE IMMEDIATELY NOTIFIED.
- FOLLOW ALL RECOMMENDATIONS PRESENTED IN GEOTECHNICAL EVALUATION REPORT PREPARED BY GALE-TEC DATED FEBRUARY 21, 2018.
- DOUBLE-RING INFILTROMETER TESTING TO THE REQUIREMENTS OF ASTM D3385 OR OTHER DISTRICT APPROVED INFILTRATION TEST MEASUREMENTS SHALL BE PERFORMED AT THE PROPOSED BOTTOM ELEVATION OF THE INFILTRATION BMP. THE MEASURED INFILTRATION RATE SHALL BE DIVIDED BY THE APPROPRIATE CORRECTION FACTOR SELECTED FROM THE MINNESOTA STORMWATER MANUAL. THIS TEST MUST BE COMPLETED BY A LICENSED SOIL SCIENTIST OR ENGINEER.

LEGEND

- TURF SEED MIX
- BWSR STORMWATER SOUTH AND WEST 33-261
- FIBER BLANKET MNDOT CATEGORY 20 (ALL SEEDED SLOPE >4:1, AND INFILTRATION BASIN)
- SILT FENCE
- TREE PROTECTION FENCE
- TEMPORARY PERIMETER FENCE
- STORM STRUCTURE PROTECTION



1 GRADING AND EROSION CONTROL PLAN
1" = 10'

811 Know what's below. Call before you dig.

10 30
SCALE IN FEET



2117 WEST RIVER ROAD
MINNEAPOLIS, MN 55411

PROJECT

LORING PARK PICKLEBALL COURTS
MINNEAPOLIS, MINNESOTA

SHEET INDEX

BID DOCUMENTS
03/02/2023

ISSUE	DATE

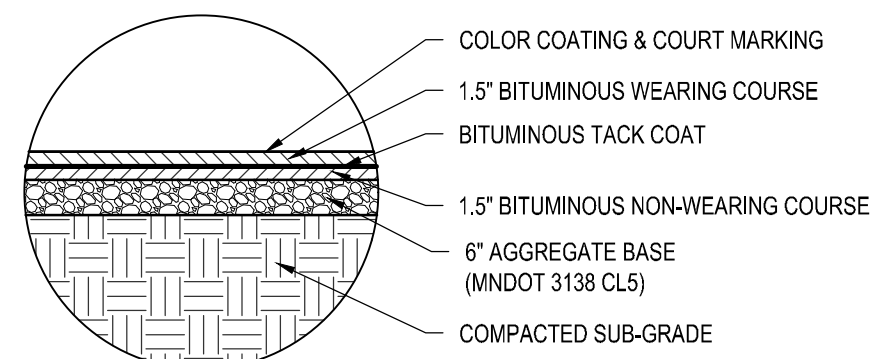


CERTIFICATION

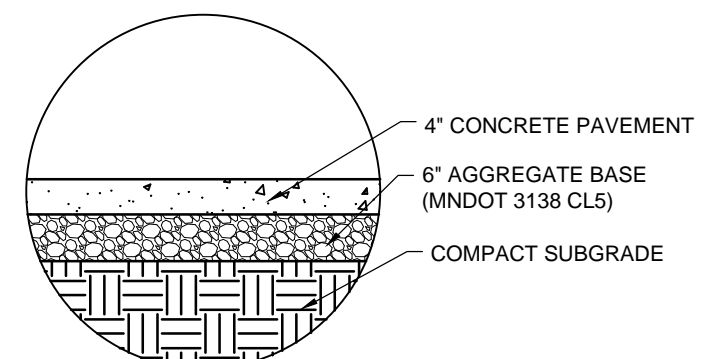
I hereby certify that this plan was prepared by me, or under my direct supervision, and that I am a duly Licensed Professional Engineer under the laws of the state of MINNESOTA.

Marcelle J. Weslock
MARCELLE J. WESLOCK DATE
REGISTRATION NO. 42323 03/02/2023

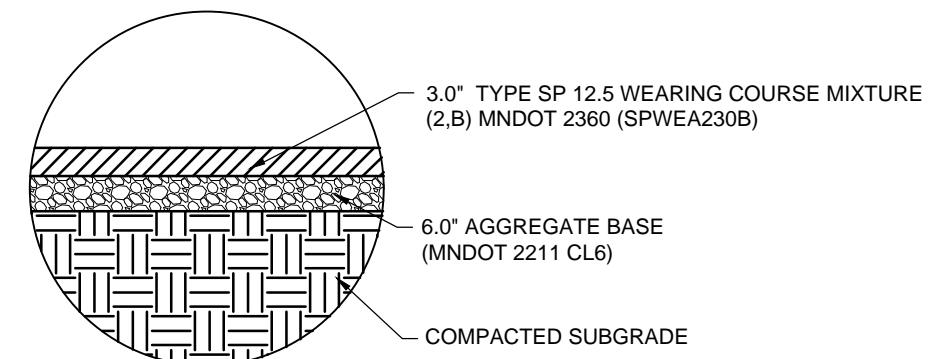
GRADING AND EROSION CONTROL PLAN
C-201
PROJECT NO.
MPR22008



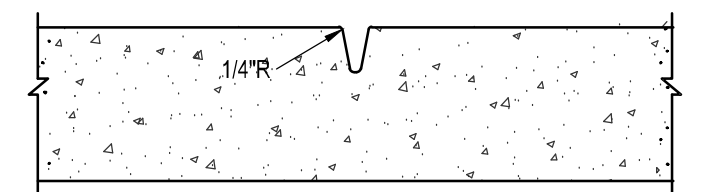
1 BITUMINOUS COURT PAVEMENT NO SCALE



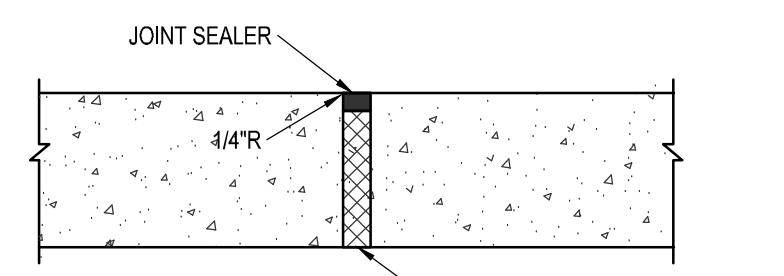
2 CONCRETE WALKWAY SECTION NO SCALE



3 BITUMINOUS TRAIL PAVEMENT SECTION NO SCALE

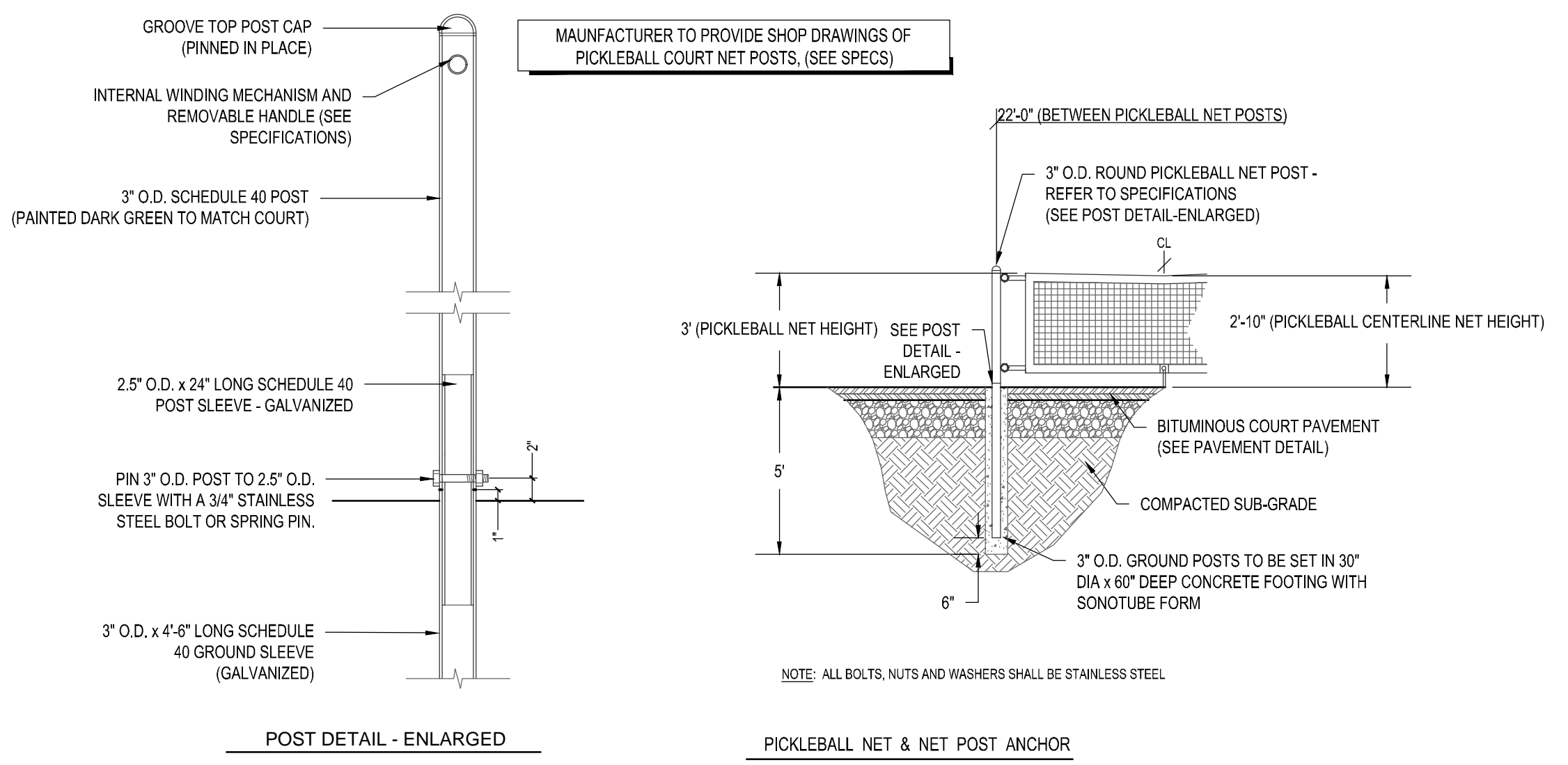


TOOLED CONTROL JOINT
SPACING: 5' WALK - 5' C/C
6' WALK - 6' C/C

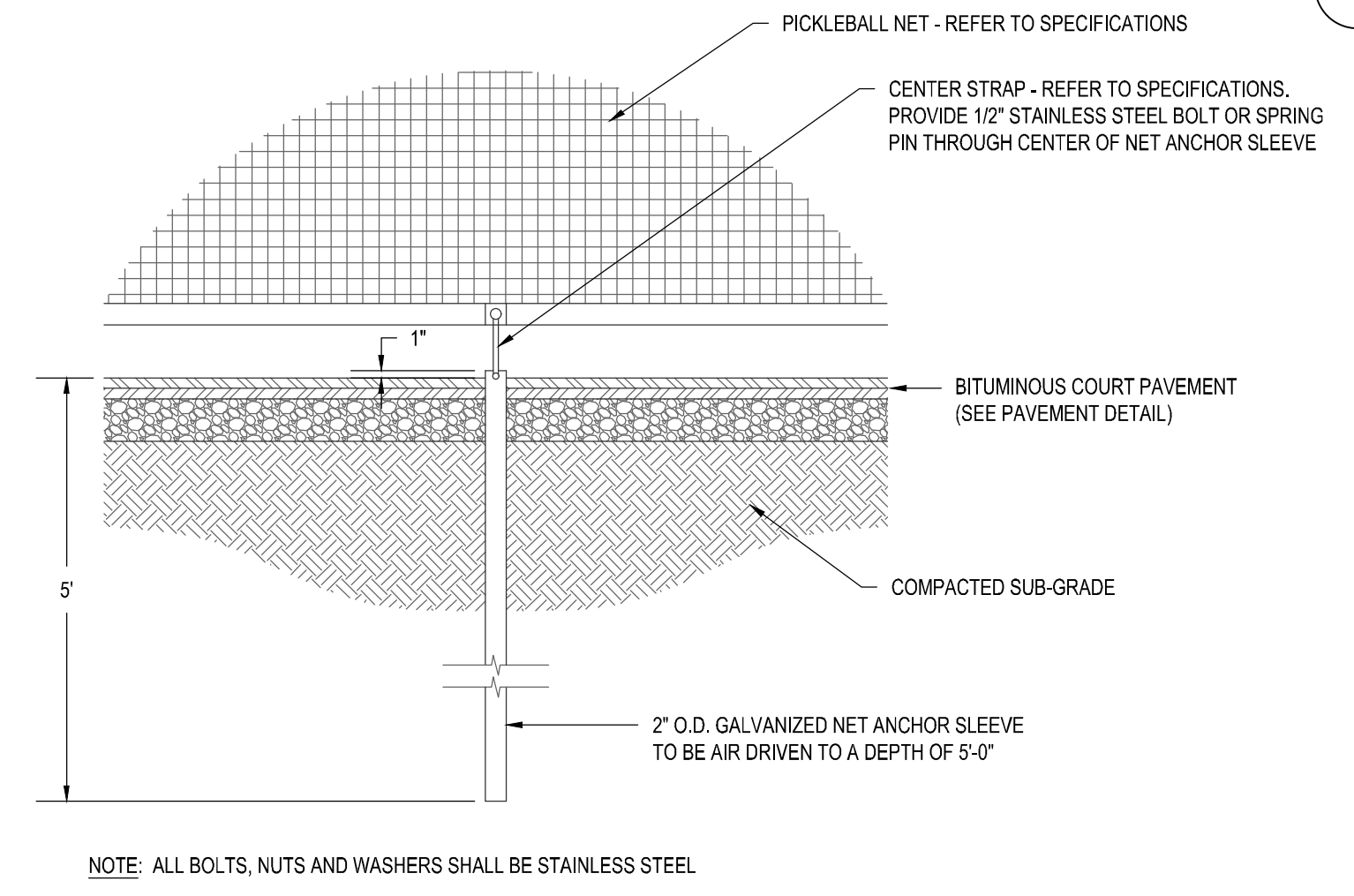


EXPANSION JOINT
MAXIMUM SPACING 100'. ALSO USE WHEN ABUTTING BUILDINGS.

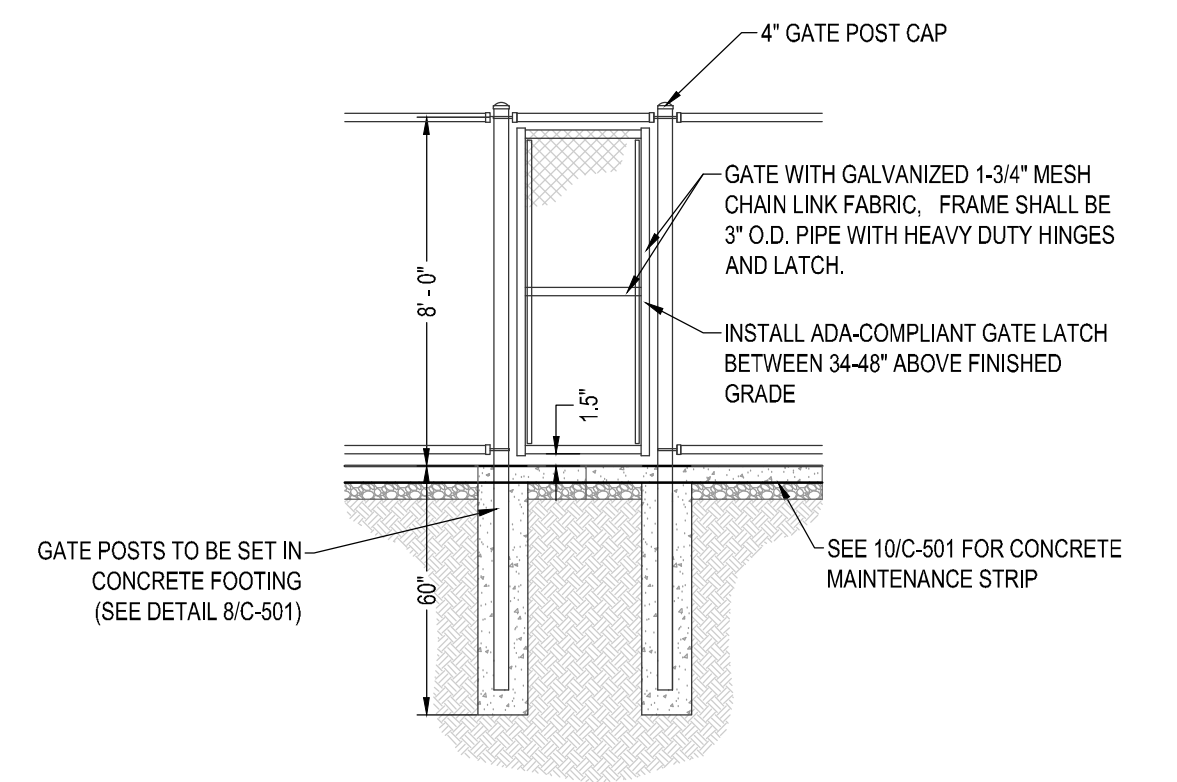
4 SIDEWALK JOINT NO SCALE



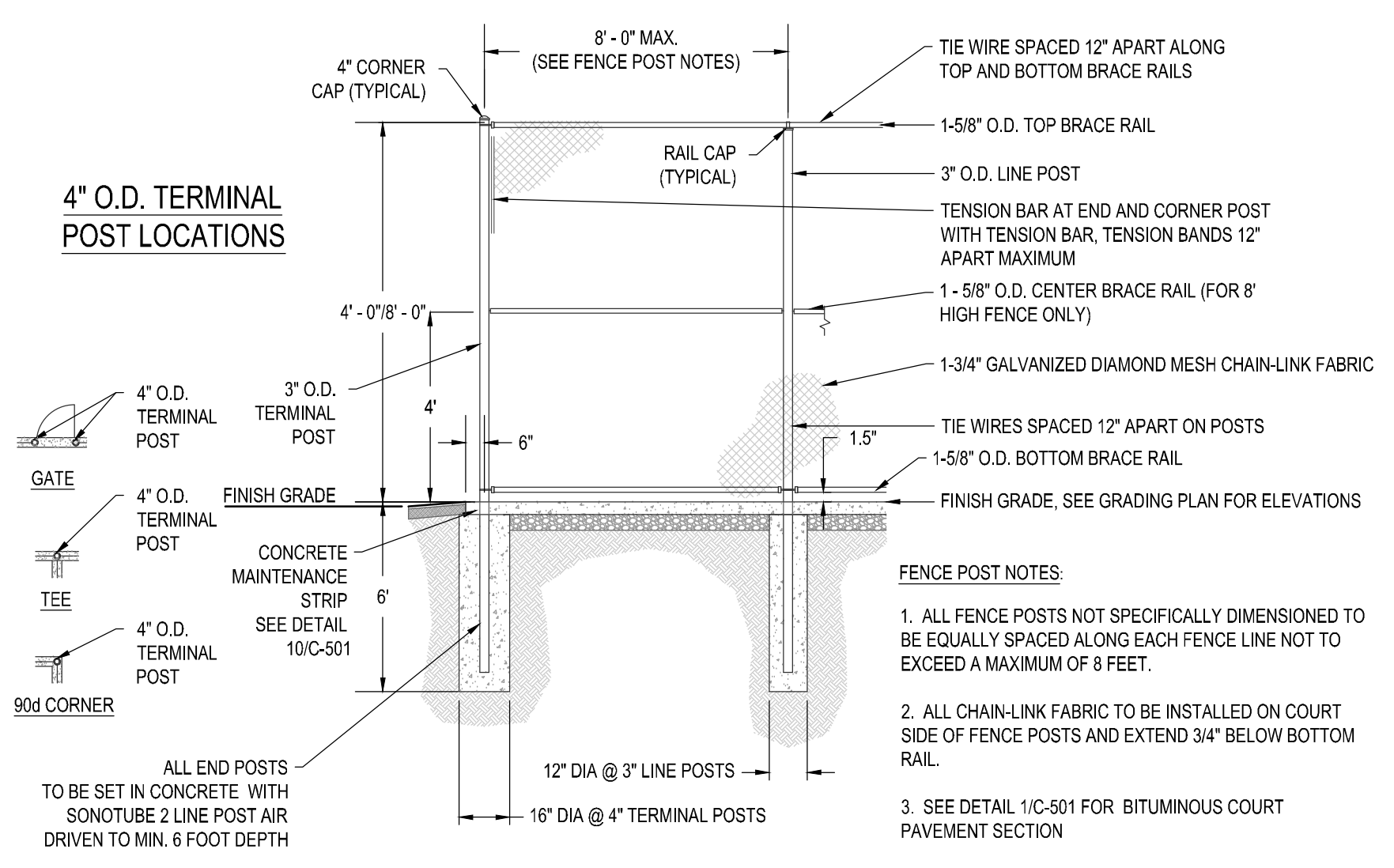
5 NET POST - BY OTHERS NO SCALE



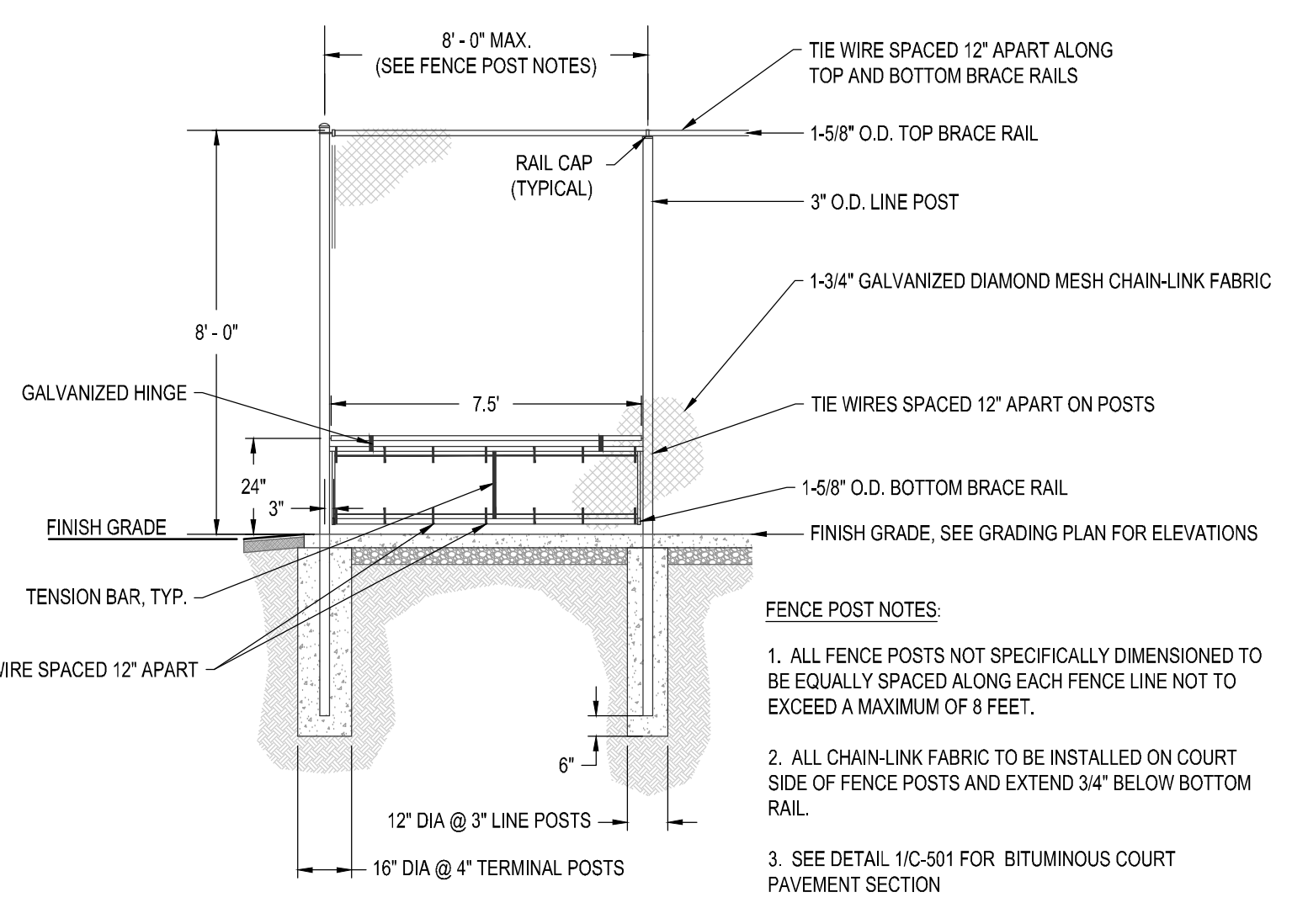
6 NET GROUND ANCHOR - BY OTHERS NO SCALE



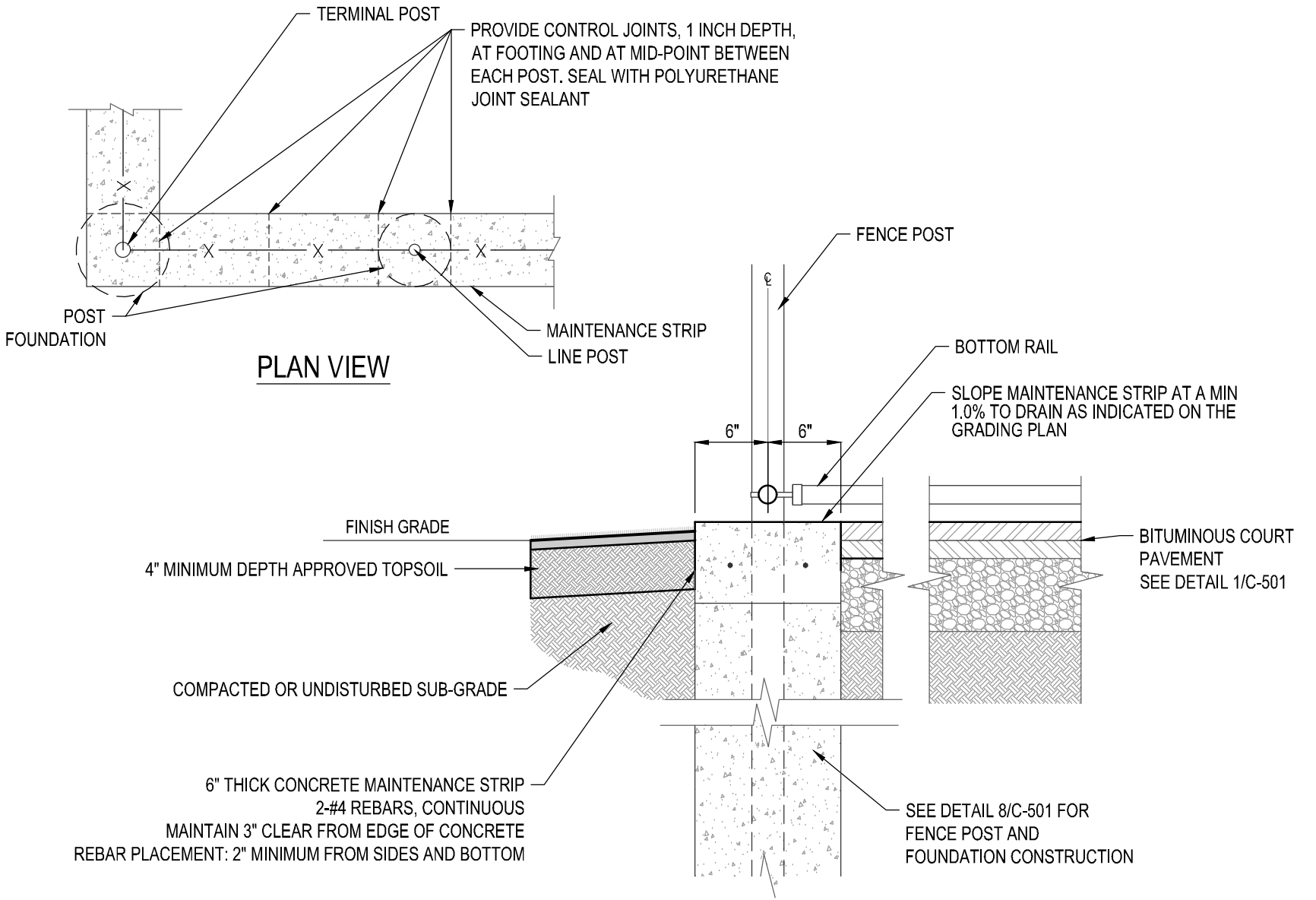
7 4' WIDE GATE NO SCALE



8 4' & 8' HIGH CHAIN LINK FENCE NO SCALE



9 LEAF CLEAN-OUT GATE NO SCALE



10 CONCRETE MAINTENANCE STRIP NO SCALE



PROJECT
LORING PARK PICKLEBALL COURTS
MINNEAPOLIS, MINNESOTA

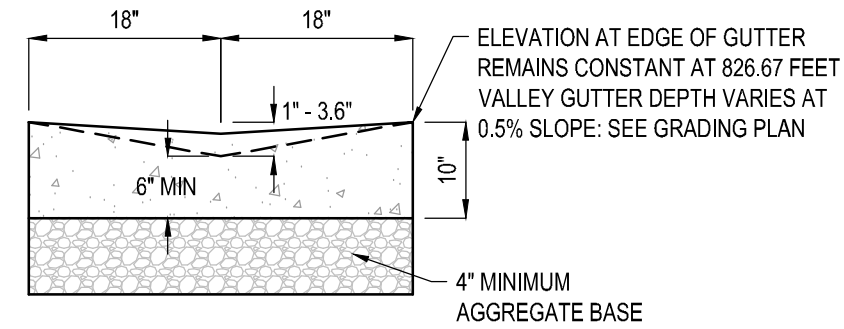
SHEET INDEX
BID DOCUMENTS
03/02/2023

ISSUE	DATE

Elan DESIGN LAB
Civil Engineering | Landscape Architecture
310 4TH AVENUE S, SUITE 1006
MINNEAPOLIS, MN 55415
p 612.260.7980
f 612.260.7990 | www.elanlab.com

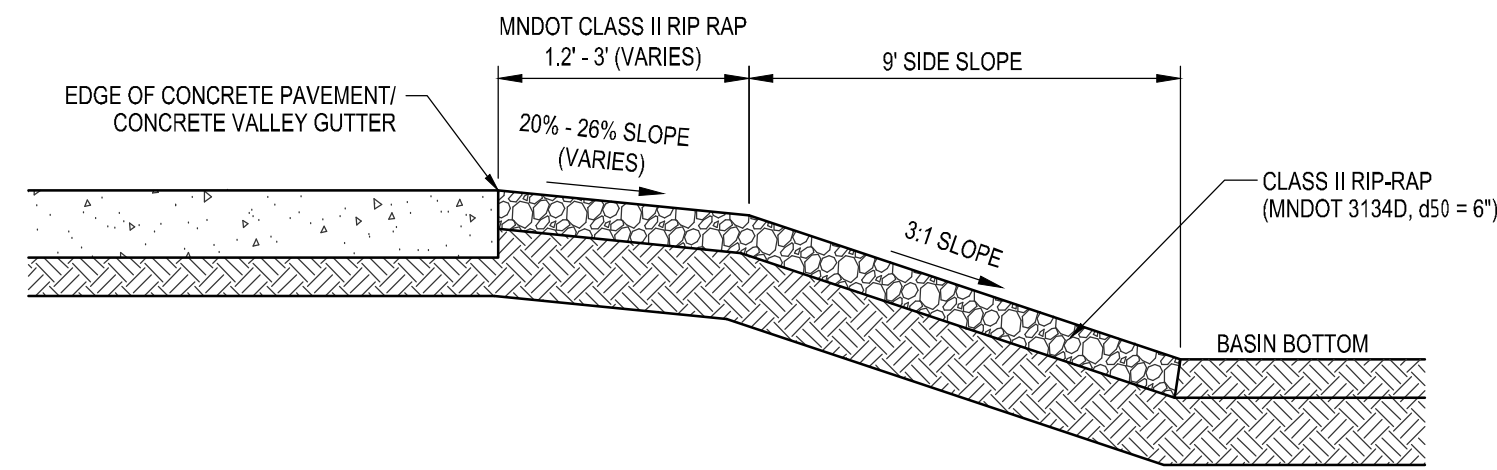
CERTIFICATION
I hereby certify that this plan was prepared by me, or under my direct supervision, and that I am a duly Licensed Professional Engineer under the laws of the state of MINNESOTA.
Marcelle J. Weslock
MARCELLE J. WESLOCK DATE
REGISTRATION NO. 42323 03/02/2023
SHEET

DETAILS
C-501
PROJECT NO.
MPR22008



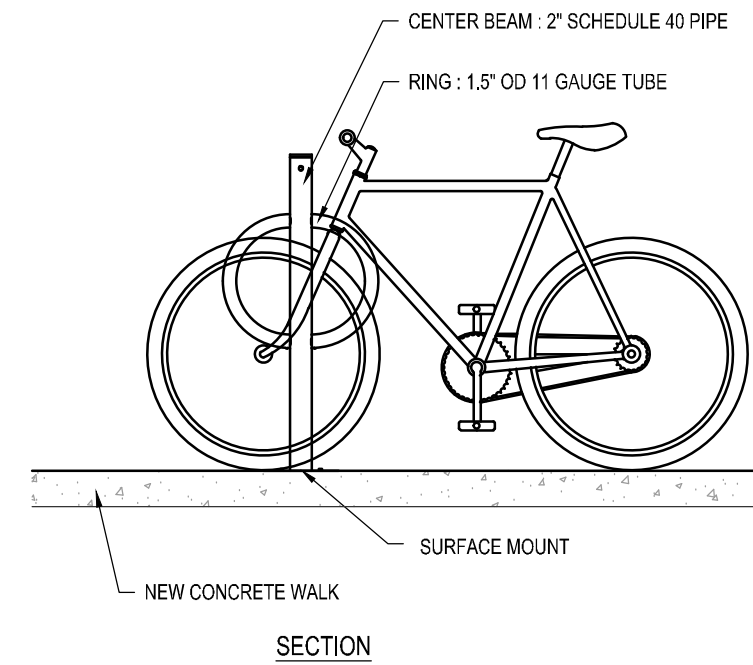
1 CONCRETE VALLEY GUTTER

NO SCALE

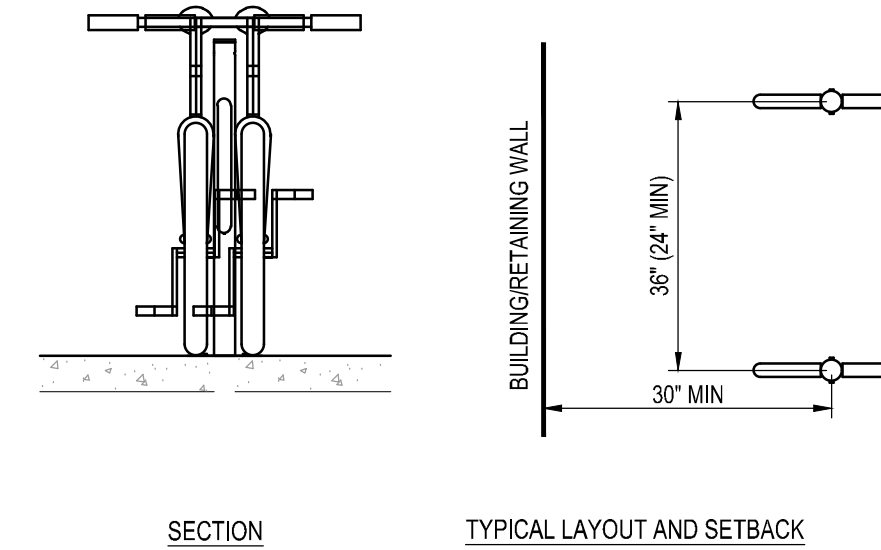


2 RIP-RAP SPILLWAY SECTION

NO SCALE

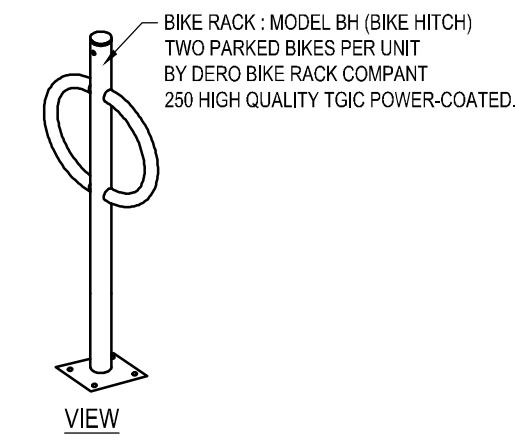


3 SECTION

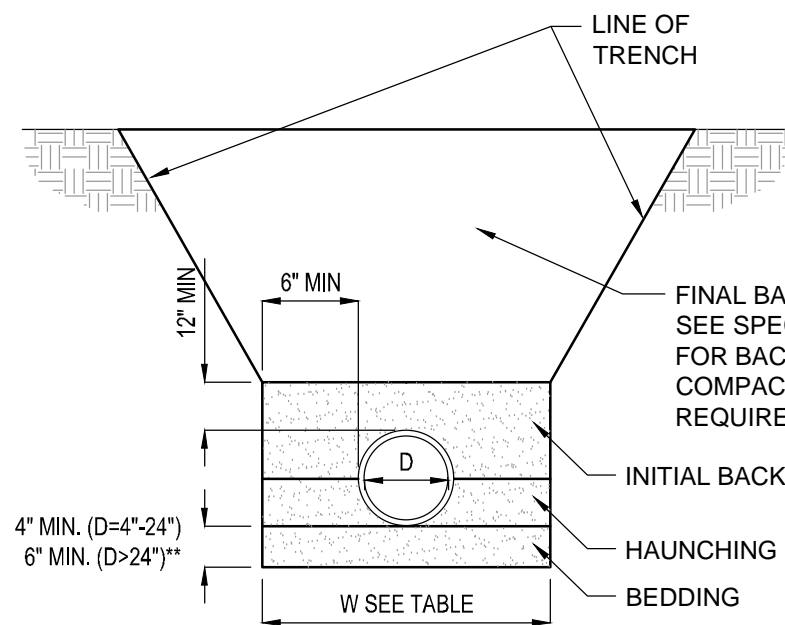


BIKE RACKS

TYPICAL LAYOUT AND SETBACK



NO SCALE



4 PVC PIPE BEDDING

NO SCALE

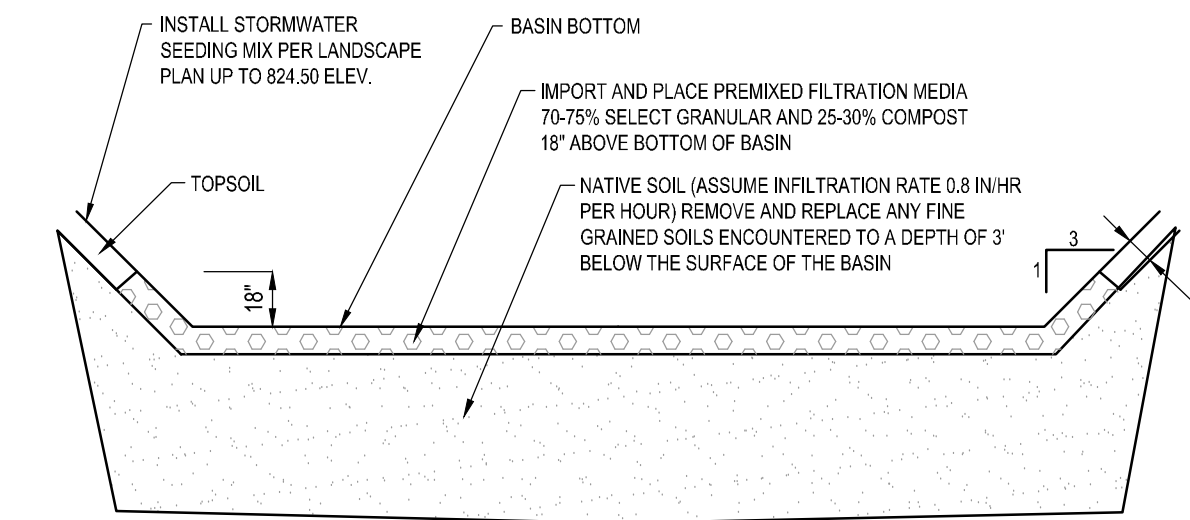
GENERAL NOTES:
ALL PIPE BEDDING SHALL BE IN ACCORDANCE WITH THE GEOTECHNICAL REPORT PREPARED BY GALE-TEC DATED FEBRUARY 21, 2018 WHERE TRENCH BOTTOM IS UNSTABLE, THE CONTRACTOR SHALL EXCAVATE TO A DEPTH REQUIRED BY THE ENGINEER AND REPLACE WITH A FOUNDATION OF CLASS I OR II MATERIAL AS DEFINED IN ASTM D2321, LATEST EDITION

HAUNCHING AND INITIAL BACKFILL SHALL BE CLASS I, II OR III AND INSTALLED AS REQUIRED IN ASTM D2321, LATEST EDITION.
MINIMUM COVER = 12" TO FINISH GRADE SURFACE
MOUND AND COMPACT TO 48" COVER DURING CONSTRUCTION

**IF SOFT OR UNSTABLE CONDITIONS ARE PRESENT, BEDDING THICKNESS SHOULD BE INCREASED BY AN ADDITIONAL 6 TO 12 INCHES OF BEDDING MATERIAL AS DIRECTED BY GEOTECHNICAL ENGINEER.

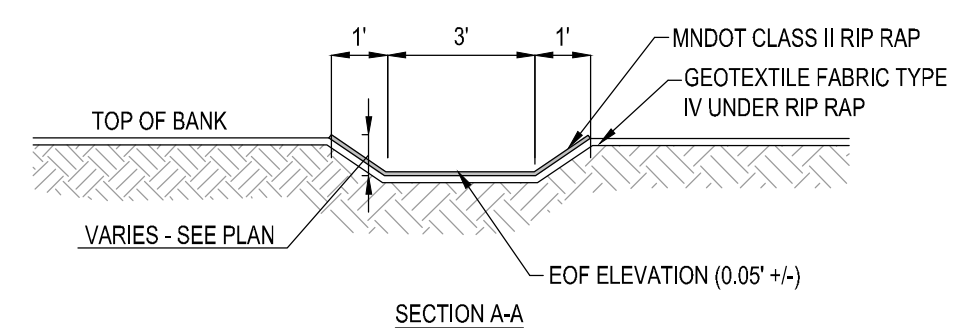
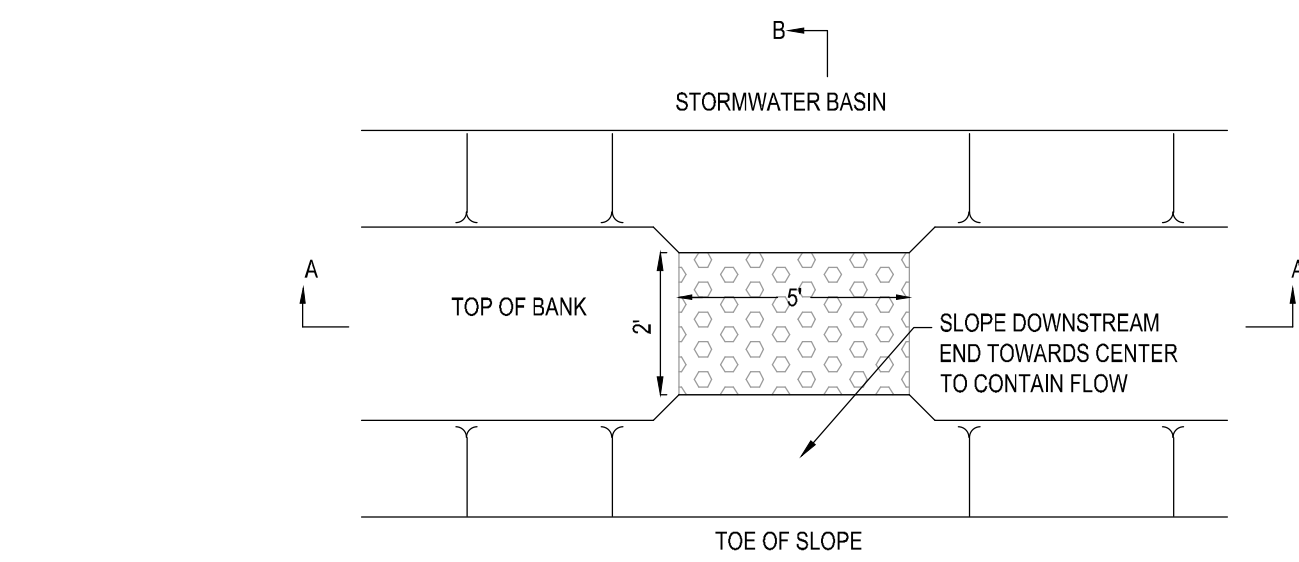
DESIGNER NOTE:
CONFIRM WITH MANUFACTURER

D	W
4"	21"
6"	23"
8"	26"
10"	28"
12"	31"
15"	34"
18"	39"
24"	48"



5 INFILTRATION BASIN CONSTRUCTION

NO SCALE



6 OVERFLOW SPILLWAY

NO SCALE

DIMENSIONS	4" DIA. PIPE	6" DIA. PIPE	8" DIA. PIPE
A	6'-1/2"	8'-1/2"	10'-1/2"
B	1'-0"	1'-2"	1'-4"
C	5"	7"	9"
D	1'-0"	1'-2"	1'-4"
E	8'-1/2"	10'-1/2"	11'-0-1/2"
F	9"	11"	11"
G	9'-1/2"	11'-1/2"	11'-1-1/2"
H Δ	5"	7"	9'-1/2"
I	11"	1'-1"	1'-3"
J	6"	9"	10"

APPROX. WT.: 210 LBS., 250 LBS., 300 LBS.
Δ EXACT DIMENSION DEPENDENT ON COUPLING METHOD.

NOTES:
ALL CONCRETE MATERIALS SHALL BE MNDOT MIX DESIGNATION 3W46 AND/OR OTHER MIX AS APPROVED BY THE STATE MATERIALS ENGINEER. HEADWALLS SHALL NOT BE SHIPPED UNTIL CONCRETE HAS REACHED A COMPRESSIVE STRENGTH OF 5000 PSI. THE EPOXY BARS SHALL BE SECURELY RETAINED SO THEY ARE NOT DISPLACED DURING CONCRETE PLACEMENT. THE WIRE SHALL BE EPOXY COATED. WELDING WILL NOT BE PERMITTED. THE FABRICATOR SHALL PROVIDE A QUALITY CONTROL PROGRAM APPROVED BY THE MATERIALS ENGINEER.

- THE RODENT SHIELD SHALL BE FABRICATED FROM CARBON STEEL FLATTENED EXPANDED METAL, STYLE 1/2" NO. 4F. IT SHALL BE HOT DIPPED GALVANIZED AFTER FABRICATION. ACTUAL SCREEN DIMENSIONS SHALL BE SUCH AS WILL SNUGLY FIT THE PROVIDED SLOT (TAPERED IF NECESSARY), WITH THE SCREEN LIP FITTING FLUSH WITH THE CASTING TOP AND THE BOTTOM FITTING TIGHT TO THE FLOW LINE.
- THE MANUFACTURER'S NAME AND DATE OF PRODUCTION (MONTH AND YEAR) SHALL BE CLEARLY CAST (NOT INK STAMPED) INTO EITHER THE BOTTOM OF EACH HEADWALL OR NEAR THE BOTTOM OF THE LARGE END. IF A MANUFACTURER HAS MORE THAN ONE PLANT, THEY SHALL BE APPROPRIATELY CODED.

7 PRECAST CONCRETE HEADWALL

NO SCALE

NOTES:
1 SEE SPECIFICATIONS FOR ADDITIONAL TREE PROTECTION REQUIREMENTS.
2 TREE PROTECTION FENCE MUST BE MAINTAINED UNTIL COMPLETION OF WORK.
3 NO TREE PRUNING SHALL BE DONE EXCEPT BY MPRB PRUNING PERMIT.
4 NO STORAGE OF MATERIALS OR OPERATION OF EQUIPMENT MAY TAKE PLACE INSIDE TPZ.

TREE PROTECTION ZONE RADIUS EQUALS 1" FOR EACH 1" OF TRUNK DIAMETER MEASURED AT 4.5' ABOVE GRADE. MODIFIED TPZ REQUIRES PRIOR APPROVAL.

TREE PROTECTION FENCE: HIGH DENSITY POLYETHYLENE FENCING WITH 3.5' X 1.5' OPENINGS. COLOR: ORANGE OR APPROVED EQUAL.

11" X 17" LAMINATED SIGN SPACED EVERY 50' ALONG FENCE.

2" X 6" STEEL POSTS OR EQUIVALENT ON MINIMUM 8' SPACING.

MAINTAIN EXISTING GRADE WITHIN TPZ UNLESS OTHERWISE INDICATED.

*CONTRACTOR MAY ONLY OPEN TRENCH OUTSIDE OF DISTANCES LISTED IN TABLE 257-1 MPRB SUPPLEMENT, OR AS APPROVED BY ENGINEER.

8 TREE PROTECTION

NO SCALE



2117 WEST RIVER ROAD
MINNEAPOLIS, MN 55411

PROJECT

LORING PARK
PICKLEBALL COURTS
MINNEAPOLIS,
MINNESOTA

SHEET INDEX

BID DOCUMENTS
03/02/2023

ISSUE DATE

Elan
DESIGN LAB
Civil Engineering | Landscape Architecture
310 4TH AVENUE S, SUITE 1006
MINNEAPOLIS, MN 55415
p 612.260.7980
f 612.260.7990 | www.elanlab.com

CERTIFICATION

I hereby certify that this plan was prepared by me, or under my direct supervision, and that I am a duly Licensed Professional Engineer under the laws of the state of MINNESOTA.

Marcelle J. Weslock
MARCELLE J. WESLOCK DATE
REGISTRATION NO. 42323 03/02/2023

SHEET

DETAILS

C-502

PROJECT NO.
MPR22008

7

8

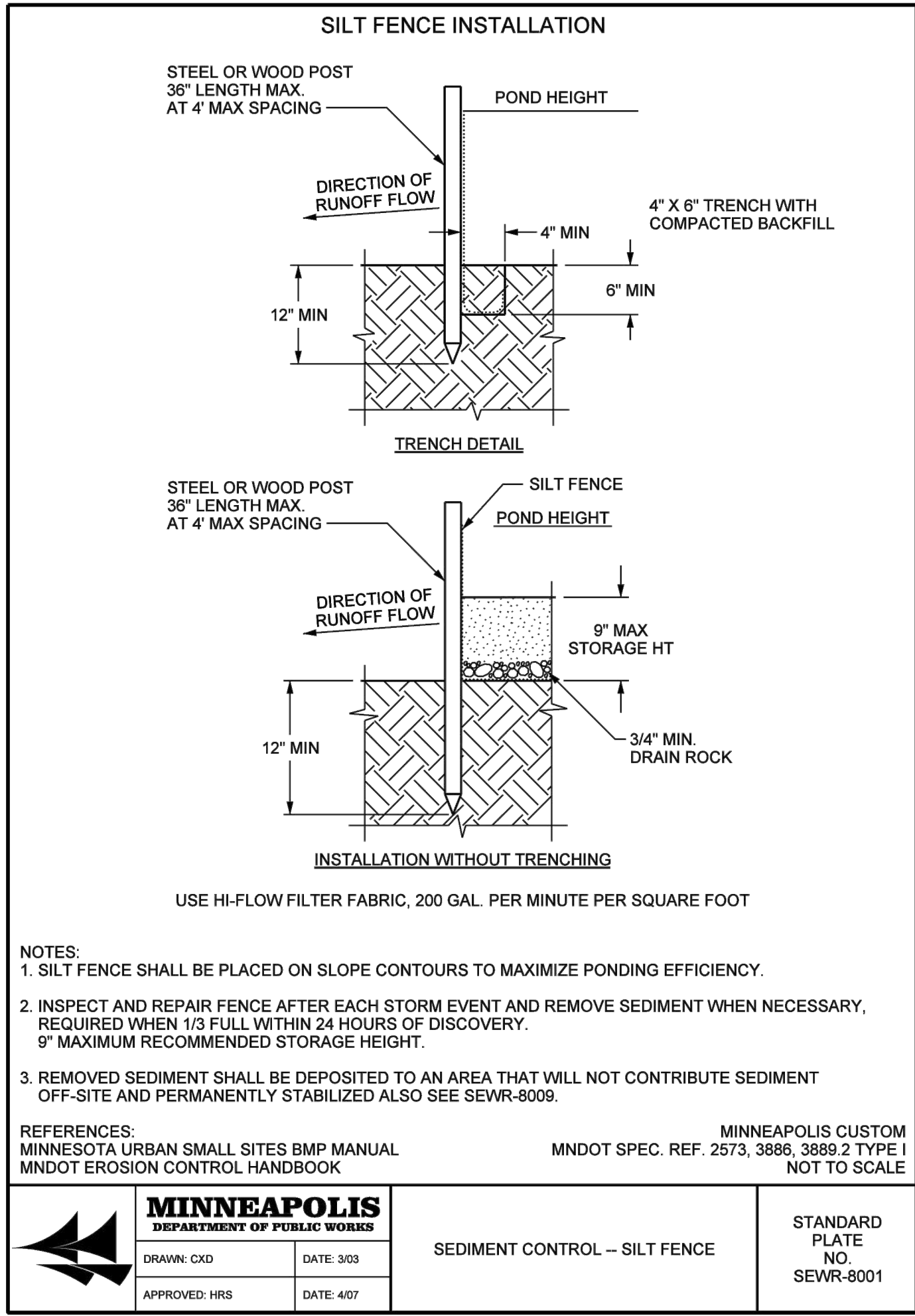
6

1

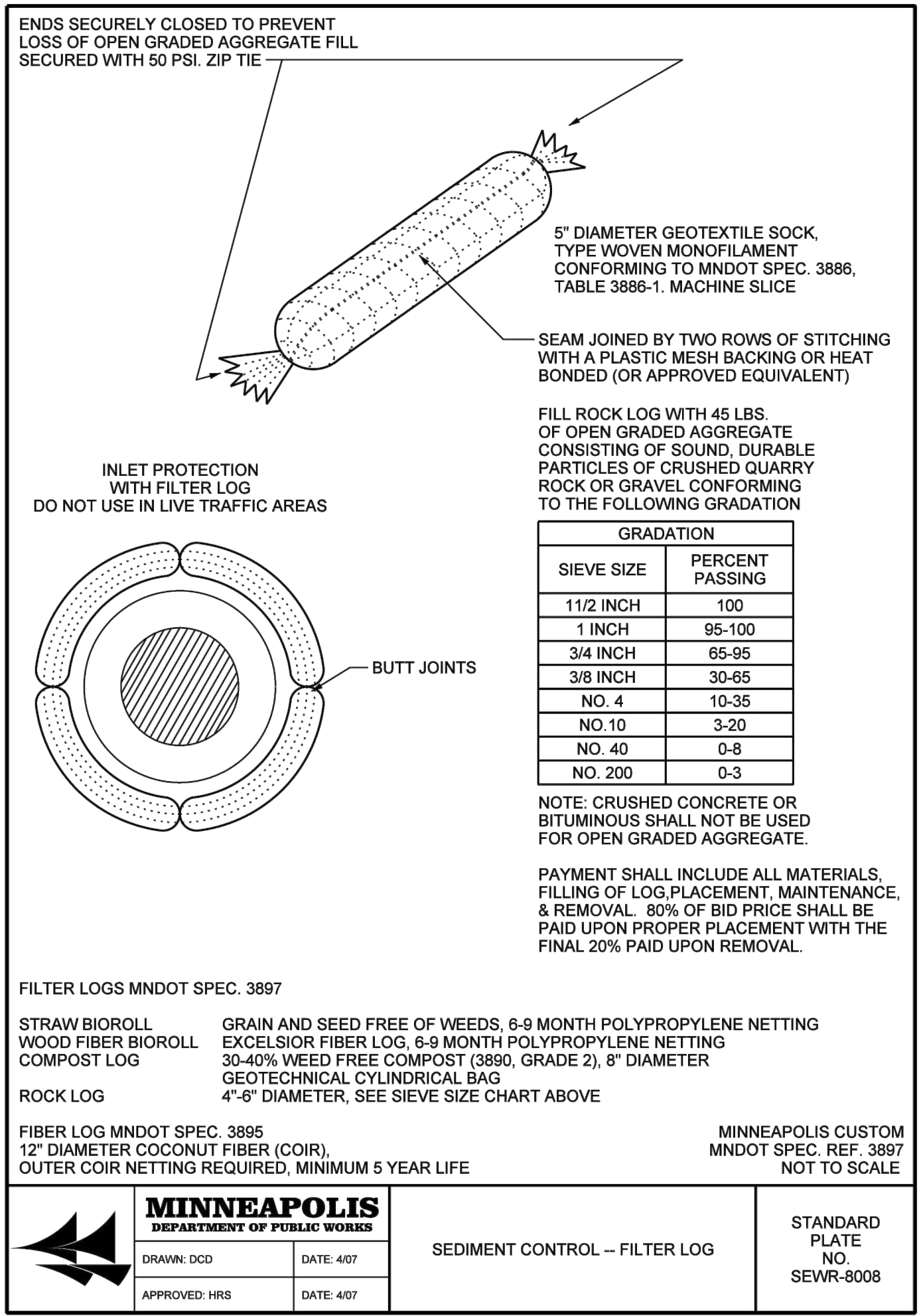
2

3

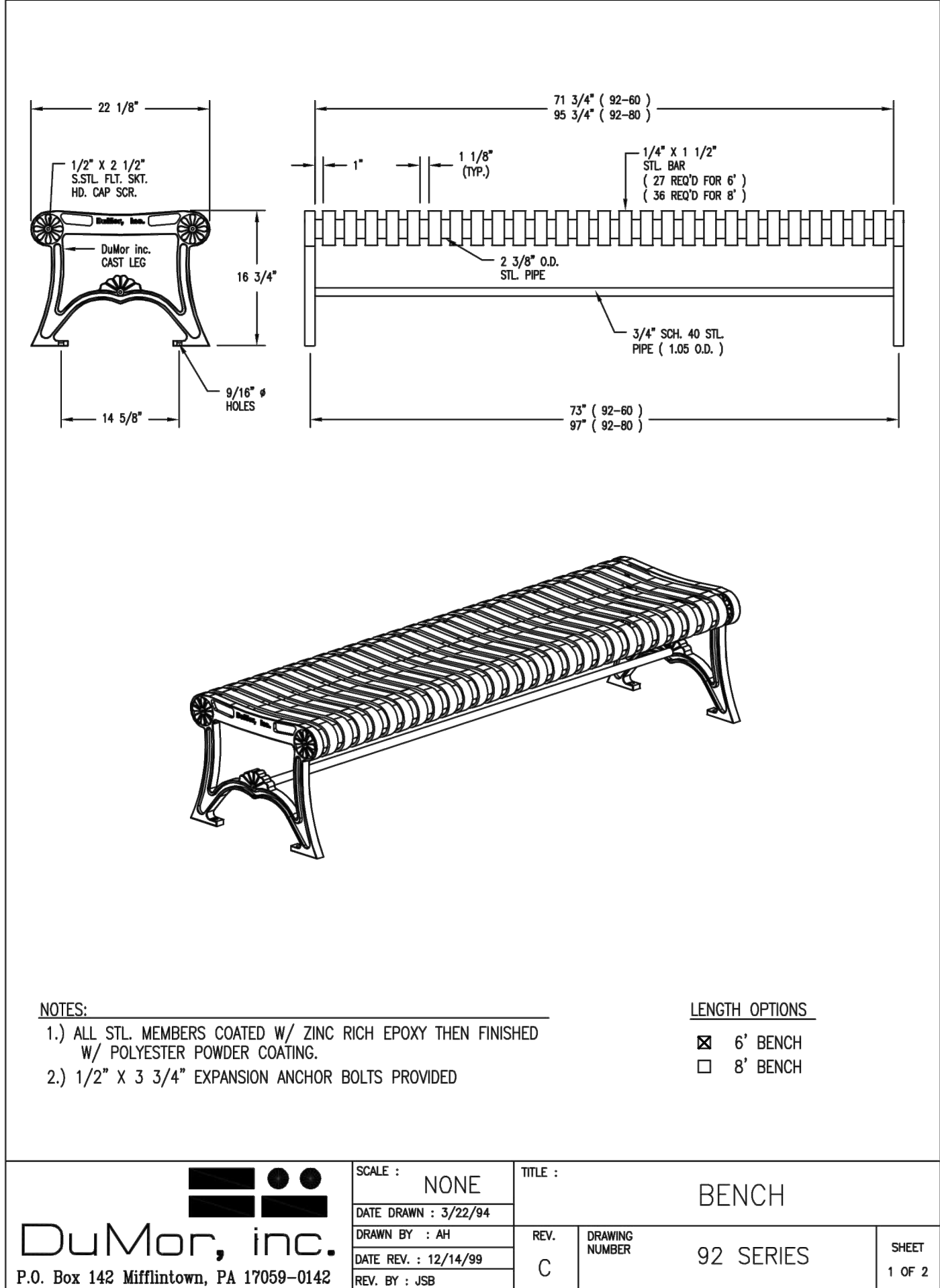
4



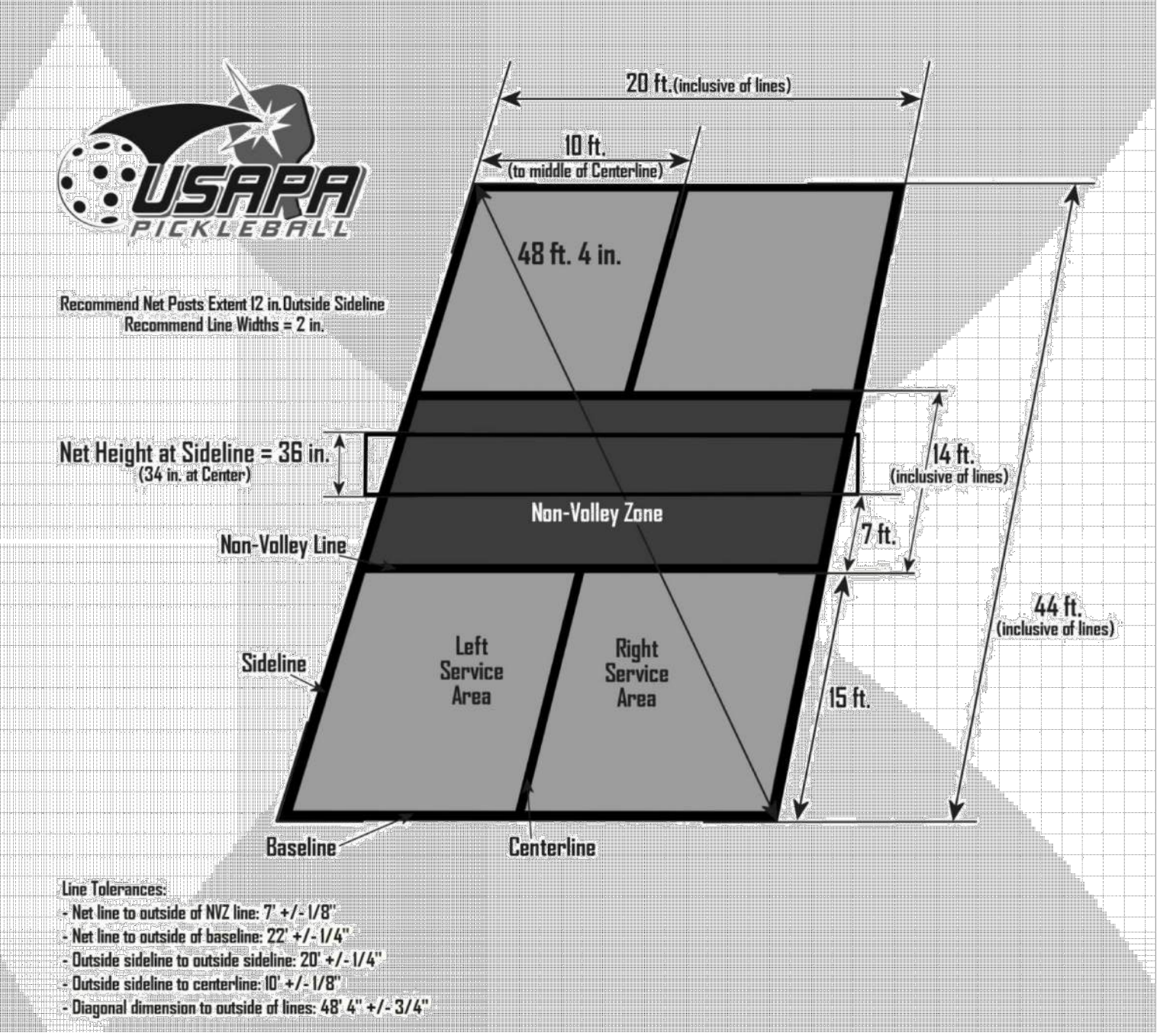
1 **SILT FENCE** NO SCALE



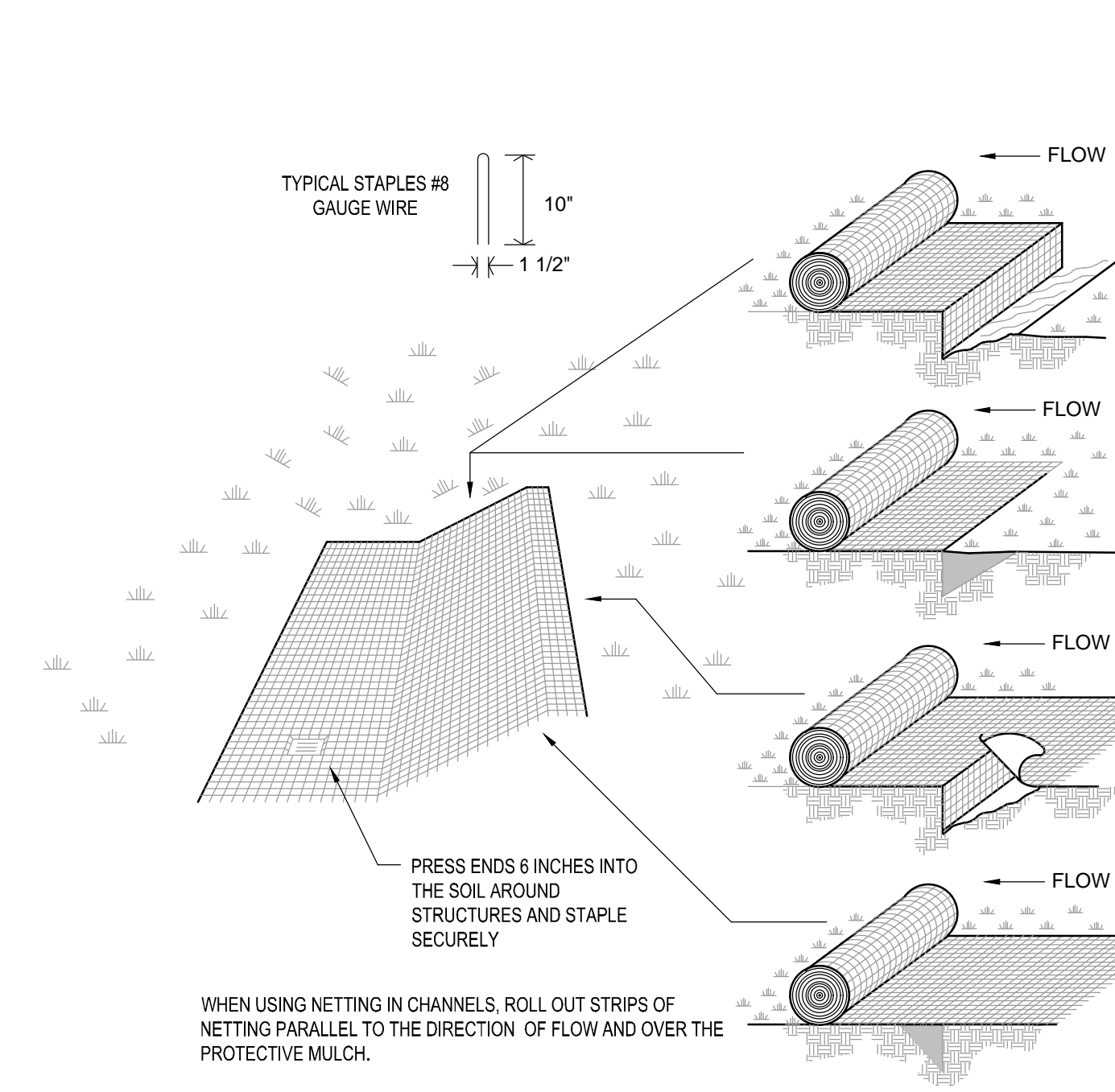
2 **FILTER LOG** NO SCALE



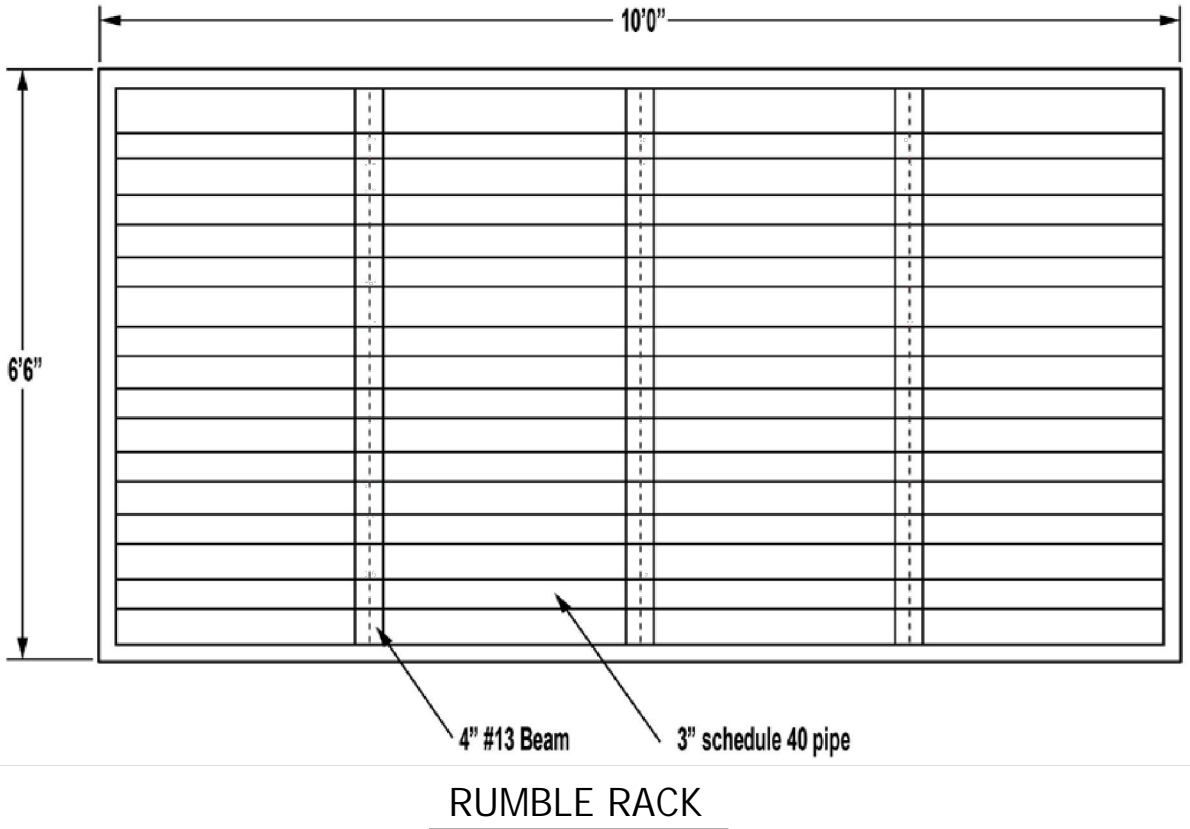
3 **BENCH** NO SCALE



4 **PICKLEBALL COURT** NO SCALE



5 **EROSION CONTROL BLANKET** NO SCALE



6 **CONSTRUCTION ENTRANCE** NO SCALE



2117 WEST RIVER ROAD
MINNEAPOLIS, MN 55411

PROJECT
LORING PARK PICKLEBALL COURTS
MINNEAPOLIS, MINNESOTA

SHEET INDEX
BID DOCUMENTS
03/02/2023

ISSUE	DATE



CERTIFICATION

I hereby certify that this plan was prepared by me, or under my direct supervision, and that I am a duly Licensed Professional Engineer under the laws of the state of MINNESOTA.

Marc J. Weslock

MARCELLE J. WESLOCK DATE
REGISTRATION NO. 42323 03/02/2023

DETAILS
C-503

PROJECT NO.
MPR22008

PLANT SCHEDULE

KEY:	QTY:	BOTANICAL NAME:	COMMON NAME:	ROOT CONDITION/ CONTAINER CLASS	SIZE & SPECIFICATIONS
LL	3	TAMARACK	LARIX LARICINA	CONT.	# 25, 8-10' HT.
UC	1	CATHEDRAL ELM	ULMUS X 'CATHEDRAL'	B&B	MIN. 1.5" CAL., 10-12' HT., TRUNK FREE OF BRANCH 5-6'

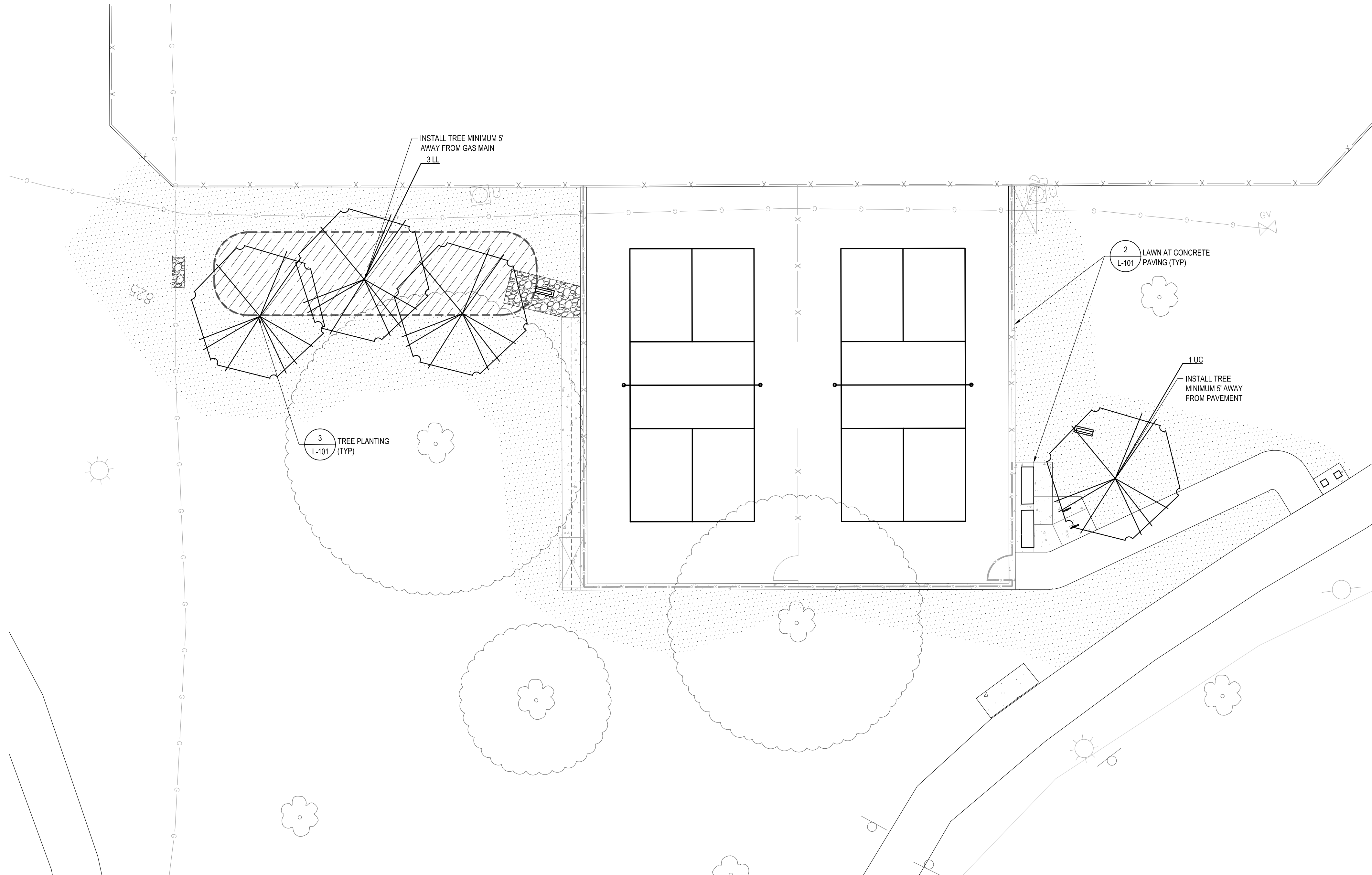
SUBSTITUTIONS: IF ANY SUBSTITUTIONS ARE REQUIRED, SUBMIT WRITTEN DOCUMENTS AND PROPOSED SUBSTITUTIONS TO LANDSCAPE ARCHITECT FOR APPROVAL 5 DAYS PRIOR TO PURCHASE AND/OR INSTALLATION.

LANDSCAPE SUMMARY

TOTAL REMOVED 2 TREES
SEE SHEET C-010 FOR TREE REMOVAL
TOTAL REPLACEMENT 4 TREES (2:1)

LEGEND

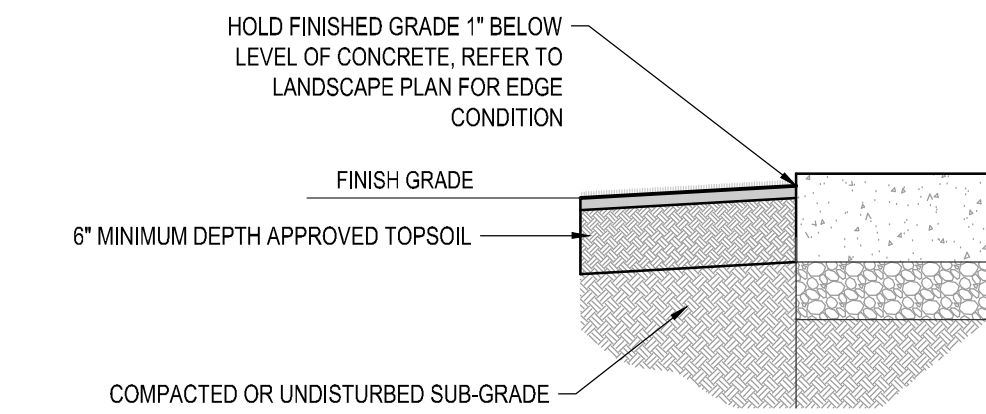
- MNDOT 25-131 LOW MAINTENANCE TURF
SEE SHEET C-201 FOR SEEDING NOTES
- BWSR STORMWATER SOUTH AND WEST 33-261
SEE SHEET C-201 FOR SEEDING NOTES
- 8' HIGH CHAIN LINK FENCE
- 4' HIGH CHAIN LINK FENCE
- ESTIMATED TREE CANOPY
- INFILTRATION AREA



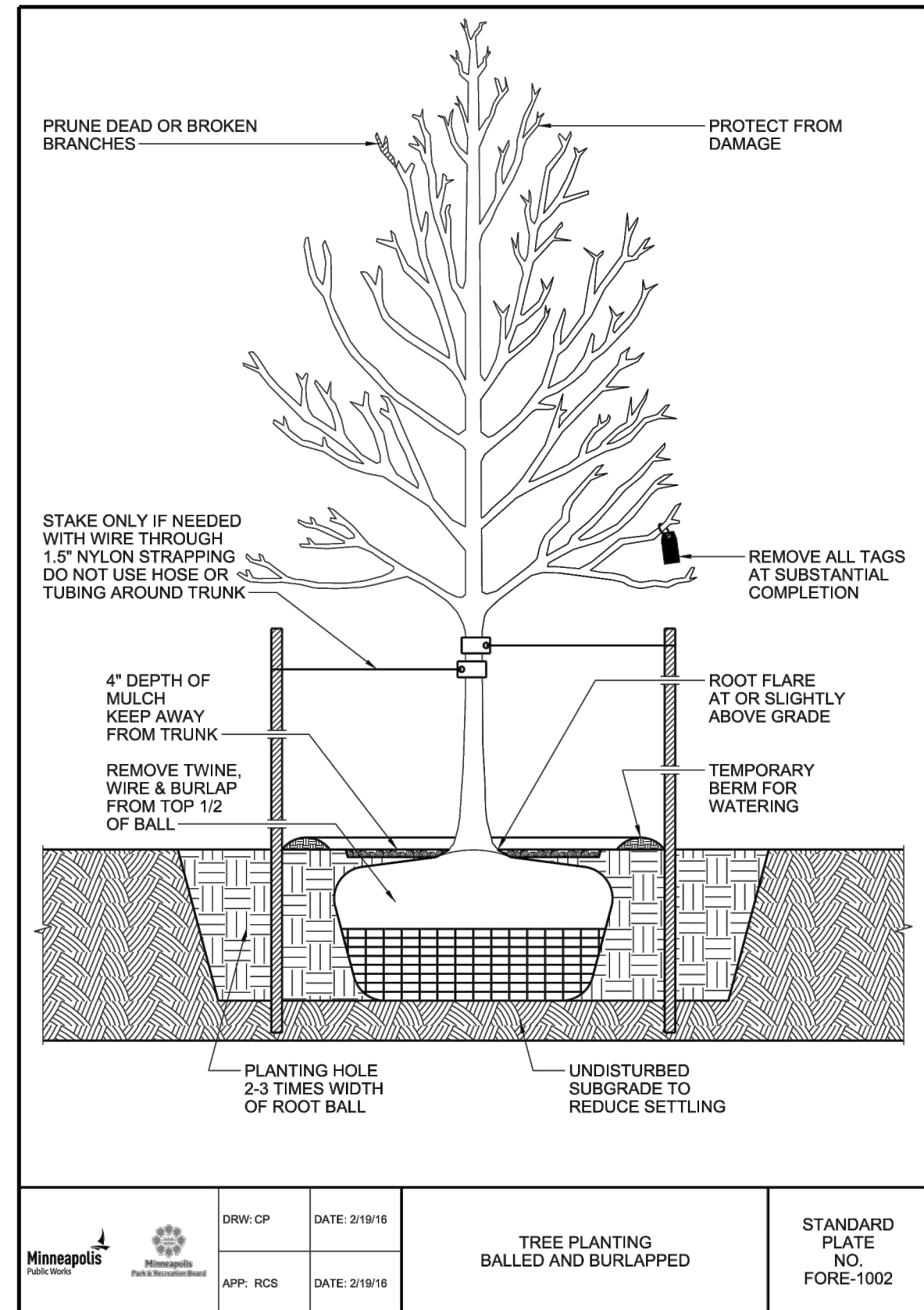
1 LANDSCAPE PLAN
1" = 10'

LANDSCAPE NOTES

- NO PLANTS WILL BE INSTALLED UNTIL FINAL GRADING AND CONSTRUCTION HAS BEEN COMPLETED IN THE IMMEDIATE AREA.
- PROPOSED PLANT MATERIAL SHALL COMPLY WITH THE CURRENT EDITION OF THE AMERICAN STANDARD FOR NURSERY STOCK, ANSI Z603.1. UNLESS NOTED OTHERWISE, DECIDUOUS SHRUBS SHALL HAVE AT LEAST 5 CANES AT THE SPECIFIED HEIGHT. ORNAMENTAL TREES SHALL HAVE NO 'Y' CROTCHES AND SHALL BEGIN BRANCHING NO LOWER THAN 3 FEET ABOVE THE ROOT BALL. STREET AND BOULEVARD TREES SHALL BEGIN BRANCHING NO LOWER THAN 6' ABOVE PAVED SURFACE.
- PROPOSED PLANT MATERIAL SHALL BE LOCATED AND STAKED AS SHOWN ON PLAN. LANDSCAPE ARCHITECT MUST APPROVE STAKING OF PLANT MATERIAL PRIOR TO DIGGING.
- NO PLANT MATERIAL SUBSTITUTIONS WILL BE ACCEPTED UNLESS APPROVAL IS GRANTED BY THE LANDSCAPE ARCHITECT TO THE CONTRACTOR PRIOR TO THE SUBMISSION OF BID.
- ADJUSTMENTS IN LOCATION OF PROPOSED PLANT MATERIALS MAY BE NEEDED IN FIELD. LANDSCAPE ARCHITECT MUST BE NOTIFIED PRIOR TO ADJUSTMENT OF PLANTS.
- PLANT MATERIALS TO BE INSTALLED PER PLANTING DETAILS.
- PLANT MATERIAL SHALL BE FERTILIZED UPON INSTALLATION WITH DRIED BONE MEAL, OTHER APPROVED FERTILIZER MIXED IN WITH THE PLANTING SOIL. PER THE MANUFACTURER'S INSTRUCTIONS OR MAY BE TREATED FOR SUMMER AND FALL INSTALLATION WITH AN APPLICATION OF GRANULAR 10-0-5 OF 12 OZ. PER 2.5' CALIPER TREE WITH AN ADDITIONAL APPLICATION OF 10-0-10 THE FOLLOWING SPRING IN THE TREE SAUCEUR.
- TREE WRAPPING MATERIAL SHALL BE TWO-WALLED PLASTIC SHEETING APPLIED FROM TRUNK FLARE TO FIRST BRANCH. WRAP SMOOTH-BARKED DECIDUOUS TREES PLANTED IN THE FALL PRIOR TO DECEMBER 1 AND REMOVE WRAPPING AFTER MAY 1.
- ALL TREES RE TO RECEIVE 4" DEEP SHREDDED HARDWOOD MULCH AND SHALL HAVE NO MULCH IN DIRECT CONTACT WITH THE TREE TRUNK.
- CONTRACTOR SHALL WARRANTY NEW PLANT MATERIAL THROUGH ONE CALENDAR YEAR FROM THE DATE OF SUBSTANTIAL COMPLETION. NO PARTIAL ACCEPTANCE WILL BE CONSIDERED.
- TOPSOIL MEETING MNDOT SPEC.3877.B (TABLE 3877-2) SHALL BE PLACED AT MINIMUM DEPTH AS FOLLOWS:
 - TURF SEED MIX - 6 INCHES
 - BWSR SEED MIX - 12 INCHES



2 LAWN AT CONCRETE PAVING
NO SCALE



3 TREE PLANTING
NO SCALE

Know what's below. Call before you dig.

10 30
SCALE IN FEET



2117 WEST RIVER ROAD
MINNEAPOLIS, MN 55411

PROJECT
LORING PARK
PICKLEBALL COURTS
MINNEAPOLIS,
MINNESOTA

BID DOCUMENTS
03/02/2023

ISSUE	DATE

Elan
DESIGN LAB
Civil Engineering | Landscape Architecture
310 4TH AVENUE S, SUITE 1006
MINNEAPOLIS, MN 55415
p 612.260.7980
f 612.260.7990 | www.elanlab.com

CERTIFICATION
I hereby certify that this plan was prepared by me, or under my direct supervision, and that I am a duly Licensed Landscape Architect under the laws of the state of MINNESOTA.

Place Smith
PLARSINEE SARATHONG DATE
REGISTRATION NO. 45059 03/02/2023

SHEET
LANDSCAPE PLAN
L-101
PROJECT NO.
MPR22008