



POWDERHORN PARK IMPROVEMENTS

10.03.22 | Initial Concepts Presentation For Community Open House



TONIGHT'S AGENDA



6:00-6:30 Welcome!

Grab some food, take a look at the concepts, and get settled

6:30-7:00 Main Presentation

We will present how we arrived at the initial concepts

7:00-8:00 Open House

We want to hear from you! Please interact with the boards and ask us questions



Minneapolis
Park & Recreation Board



HOW DID WE GET HERE?

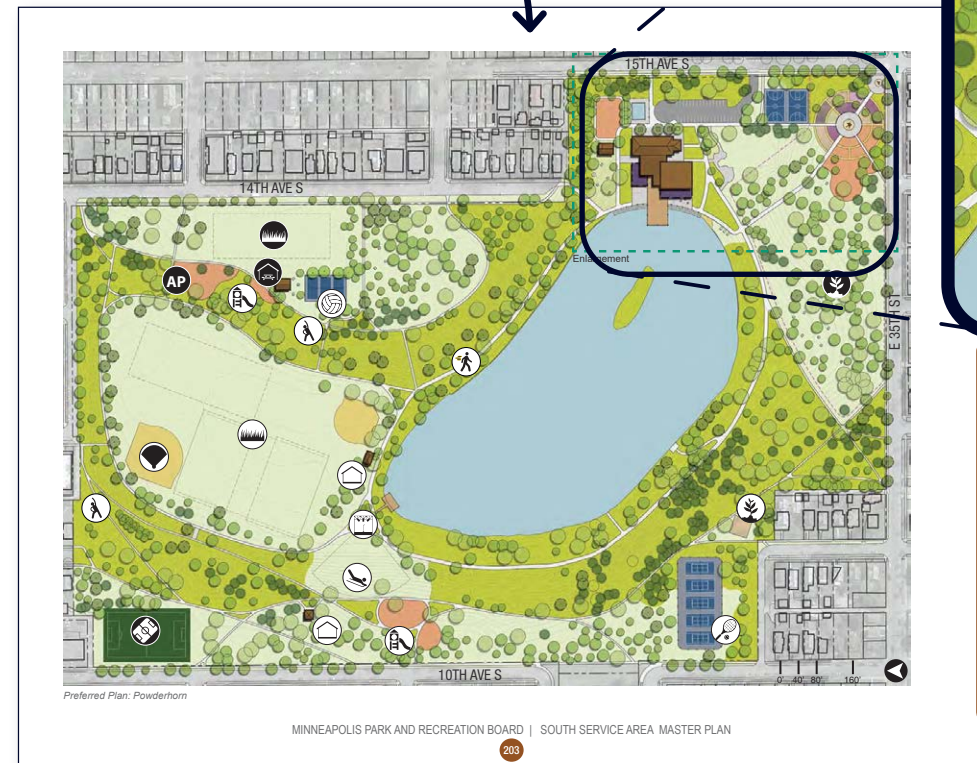
A Park Master Plan was adopted in 2016 as part of the South Service Area Master Planning process.

Improvements to date include:

- Wading Pool
- 15th Avenue Playground
- Updated 10th Avenue Playground
- Resurfaced 10th Avenue Tennis Courts

A new round of funding is now available for Powderhorn Park and we **asked you over the summer on how that funding is prioritized.**

2016 Powderhorn Park Master Plan



UPDATE EXISTING

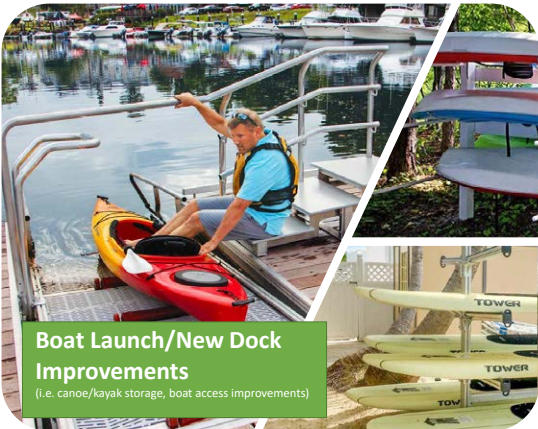
- Traditional Play Structure
- Wading Pool
- Stage / Bandshell
- Designated Sledding Hill
- Multi-use Field
- Multi-use Diamond
- Tennis Court
- Basketball Court
- Urban Agriculture Area
- Equavolley Court
- Restroom/Storage Building
- Walking Loop Trail
- Adult Fitness
- Skating Rink

NEW/ ADDED

- Nature play area
- AP Adventure Play
- Group Shelter
- Premier Field
- Multi-use Field
- Urban Agriculture Area
- Community Oven
- Outdoor Gathering Space
- Basketball Court
- Canoe/Kayak Launch

HOW DID WE GET HERE?

We held **five (5) open house sessions** to gather feedback beginning in June through August 2022 **and conducted an online survey to discuss prioritization.**



HOW DID WE GET HERE?

- We heard from over **300 people** from in person open houses and online survey
- When asked **what projects should be prioritized** for the current funding **the top three projects were:**



① Shoreline Restoration/
Native Replanting



② Nature
Playground



③ Picnic Pavilion &
Improved Picnic Area

④ COMMUNITY GARDEN ON 14TH AVE.

- During community engagement this summer **we asked if we should add a community garden** to the park adjacent to 14th Ave
- **90% (271 total) of respondents said yes** and 71 people said they would be interested in having a plot
- There is **specific funding available for gardens that is separate from the current project** shared in the draft concept plans
- **Next steps** for creating a new community garden at Powderhorn Park **will involve MPRB staff working with community** to design and plan for this project



GET INVOLVED WITH THE COMMUNITY GARDEN!

- **If you are interested in being involved in design and/or a plot**, please sign up on the welcome table or check out the project webpage for more information
- The expected timeline will be design starting in November 2022, construction in spring and summer 2023, with **garden ready for the 2024 gardening season**
- **Becca Gross will be leading this effort.** If interested in this project, you can also contact Becca at:
 - Becca Gross – Community Garden Coordinator
Environmental Management
communitygarden@minneapolisparks.org



① SHORELINE RESTORATION & WATER QUALITY IMPROVEMENTS IN POWDERHORN LAKE

- **Improving water quality** in the lake at Powderhorn Park **is a complex issue**
- **Shoreline restoration, native habitat creation** and reduced turf areas **are only part of the puzzle** for improving water quality in the lake at Powderhorn
- **MPRB staff are committed to working on a long-term plan to improve water quality** in the lake and exploring options based on community input with the City of Minneapolis and our own maintenance capacity



SHORELINE RESTORATION

- In the early 2000's the shoreline around Powderhorn Lake **was converted from turf grass to native shoreline plantings**
- Overtime **fluctuation in water levels and increased rainfall** in the last 10 years **have caused flooding and plant die off** in riparian and shoreline edges
- Upland areas do still have many native plants but also have become **overgrown with trees and invasive species**
- Maintenance to remove invasive species has been sporadic and **staffing availability to maintain restoration areas has been limited**



LONG TERM PLANNING FOR POWDERHORN'S ECOLOGY

- Long term planning efforts would include **a wholistic look** at Powderhorn naturalized areas **to determine what restoration approaches should occur** of the upland and emergent zones
- It would also **include plans for restoration of the woodland and prairie areas** to reduce invasive spread into newly planted areas and **increase habitat quality** throughout the park
- We do **not currently have funding** or a timeline for these projects.



DIAGNOSTIC STUDY & NEXT STEPS

- The first step in any effort to improve water quality in the lake is to do a **diagnostic study** of the lake to determine what approach(s) should be taken to effectively improve water quality
- We do not currently have funding available for this study. And **existing funding cannot be used for this study**
- *Additional Note: While a diagnostic study is not currently funded, MPRB does have funding from the City to do regular monitoring which will contribute and is critical for long term diagnostic understanding of the lake.*
- **MPRB and the City of Minneapolis are working together on determining a funding source and timeline for the study.** Meanwhile, MPRB staff are continuing to collect water quality data on the lake. City of Minneapolis is also funding MPRB to collect data the quantity and quality of stormwater entering the lake .
- We will continue to update the public on progress in developing plans for improving shoreline, native planting quality and water quality



GET INVOLVED?

- Throughout community engagement this summer, we heard about the many community members who help pick up trash in the park. We also **heard interest in developing something along the lines of “park ambassadors”** who help with other things such as restoration efforts and supporting healthy trees.
- If there is interest in developing **a volunteer effort to remove invasive species** in both the shoreline, adjacent woodland and prairie areas, **please sign up at the welcome table** or find the link on the project webpage.



OTHER PRIORITY PROJECTS

Other projects identified were:

- Basketball court improvements
- Additional shade for pool area
- Upgrading a water fountain area
- Learning/teaching gardens

Top 3 playground preferences included:

- Nature play
- Adventure play
- Large play structure with lots of activities



DESIGN INSPIRATION

Creating connections to nature, water, and people

- Creating native habitat
- Use of organic design forms and materials
- Providing places to gather and reflect

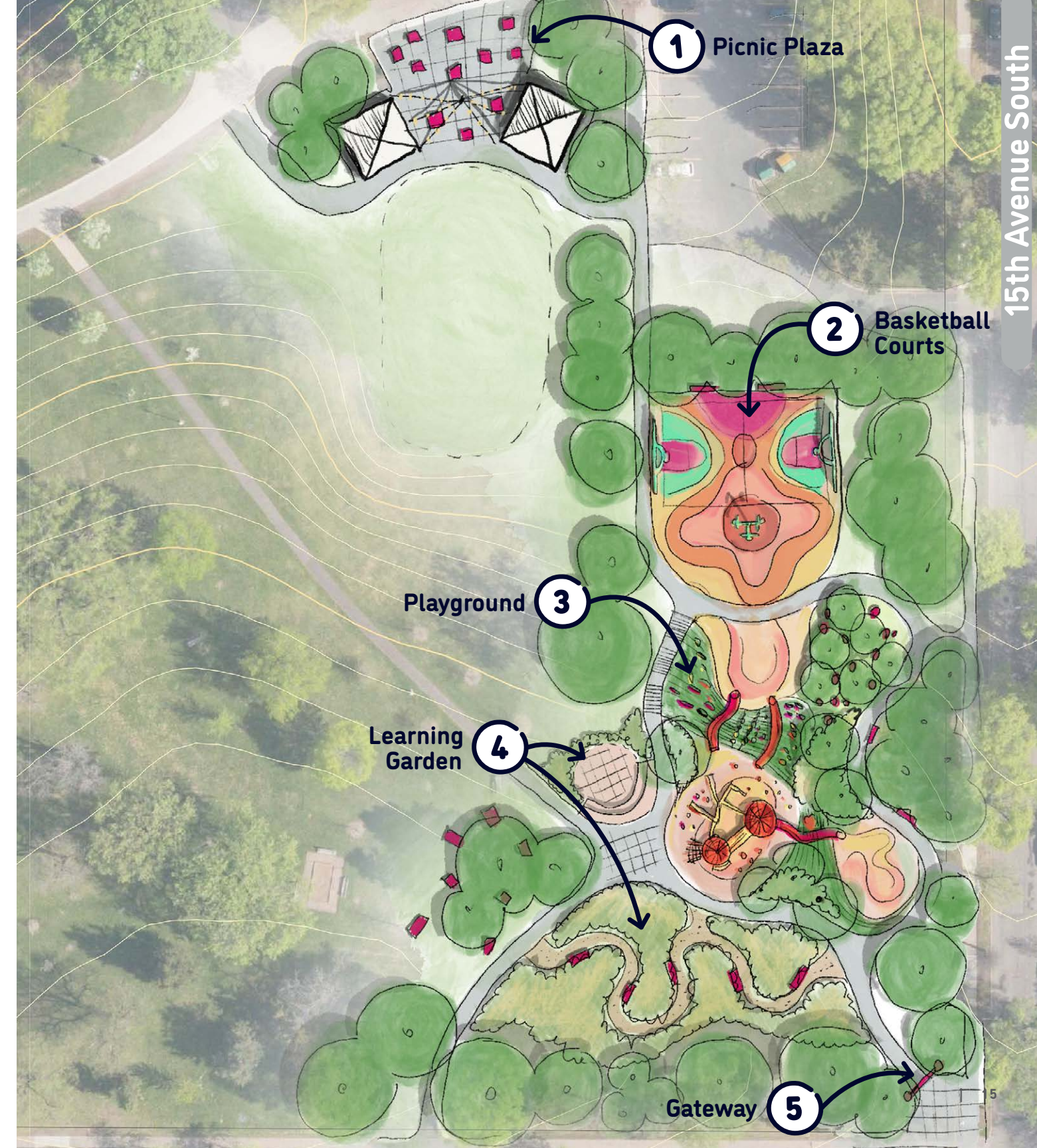
Incorporating places of discovery, adventure, play, and education

- Incorporation of color
- Including nature/adventure play
- Artful incorporation of interpretive elements
- Celebrating seasonality



CONCEPT A

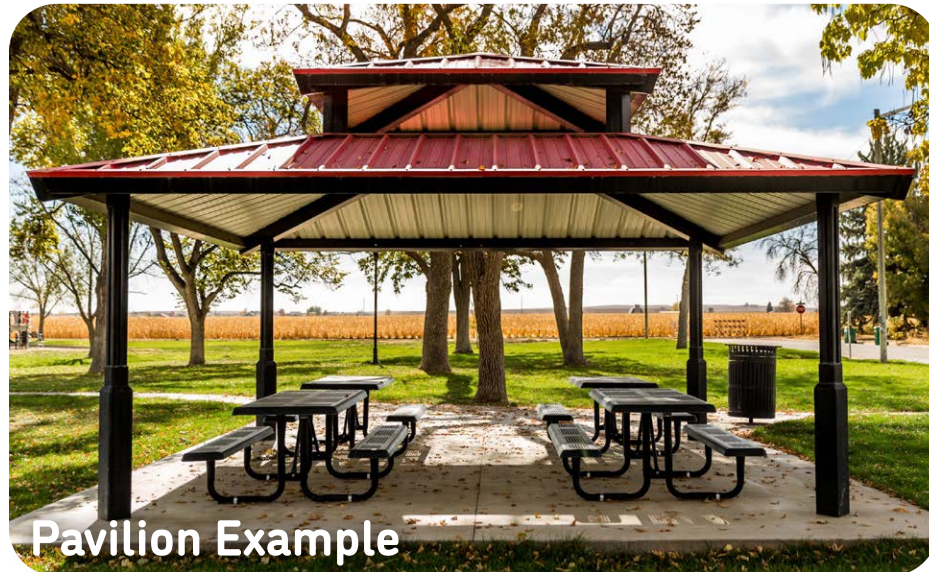
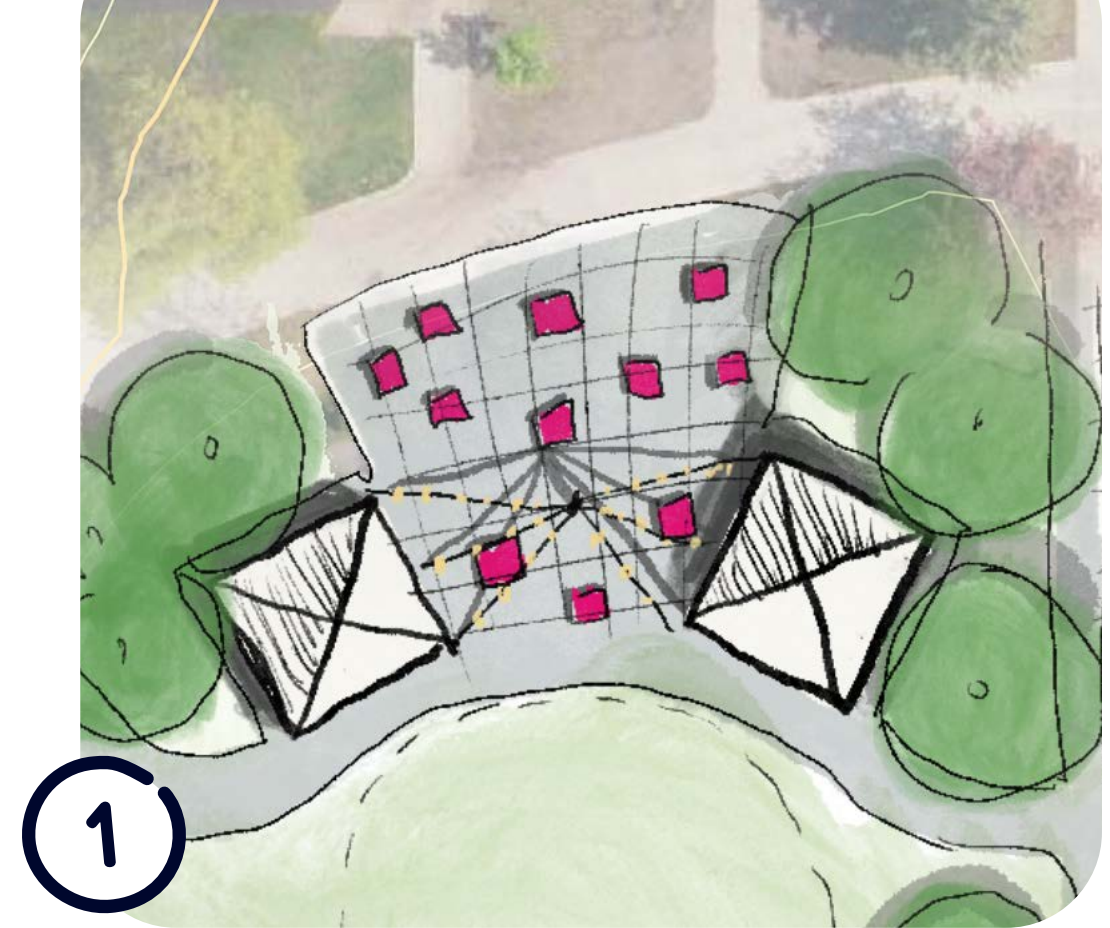
- Public Art Opportunity
- Picnic Plaza With Overhead Cable Lighting
- Picnic Pavilion (30ftx30ft)
- Renovated Lawn/ Flexible Event Space
- Existing Sledding Hill Remains
- Updated Full Basketball Court
- Half Court With Multi-way Hoop
- Accessible Path
- New Curved Stairway with Railing
- Nature/Adventure Play
- Flexible Seating Grove
- Outdoor Classroom/ Gathering With Views to Lake
- Large Play Structure with Lots of Activities
- Picnic Area
- Learning Gardens with Native Plantings with Seating/Integrated Interpretation
- Artful Gateway
- Resurfaced Pathway (if budget allows)



CONCEPT A

Picnic Plaza Area

- Two picnic pavilions
- Center plaza area with views to lake
- Artful lighting
- Flexible seating



Pavilion Example



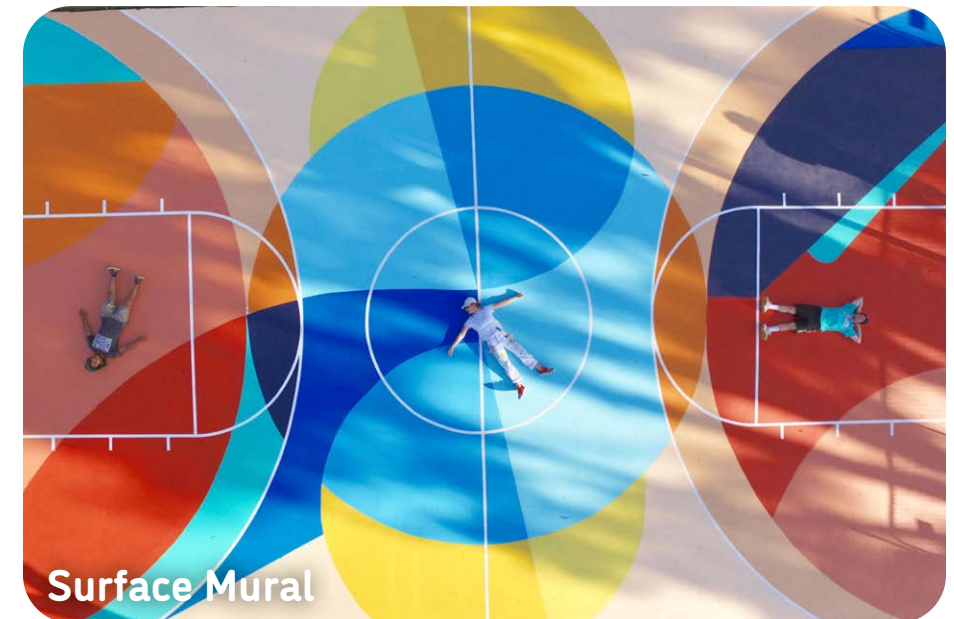
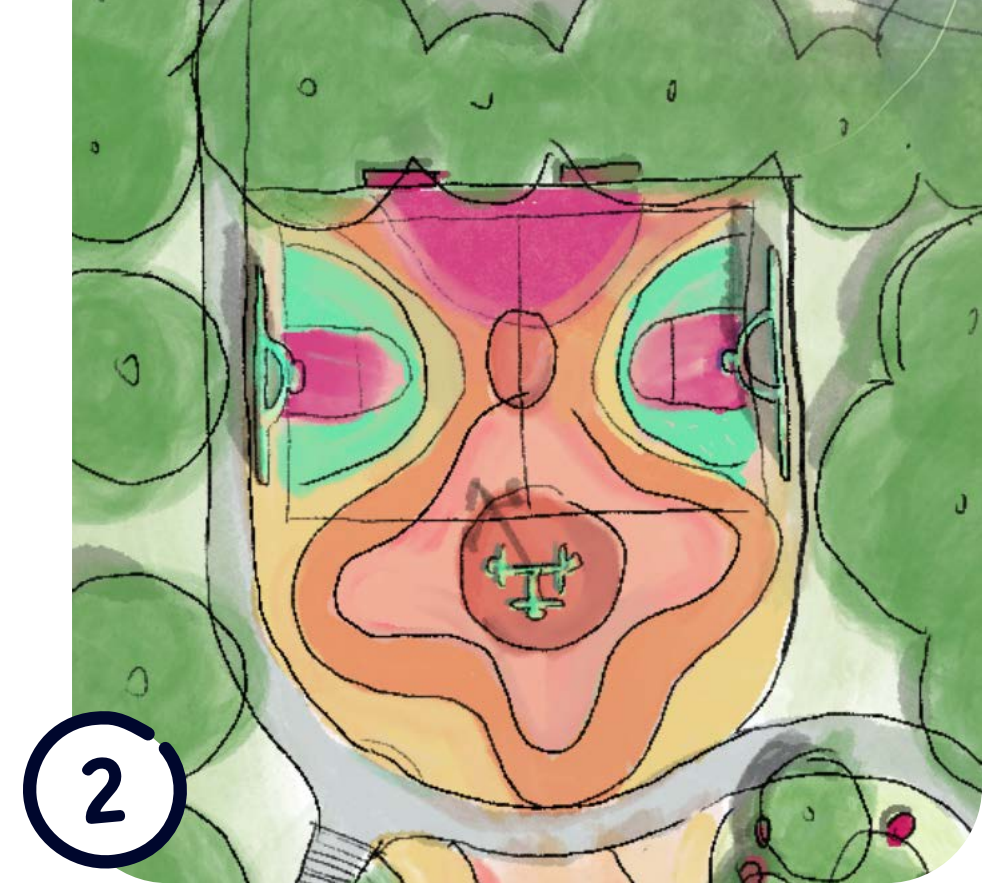
Surface Mural & Artful Lighting



CONCEPT A

Basketball Court Area

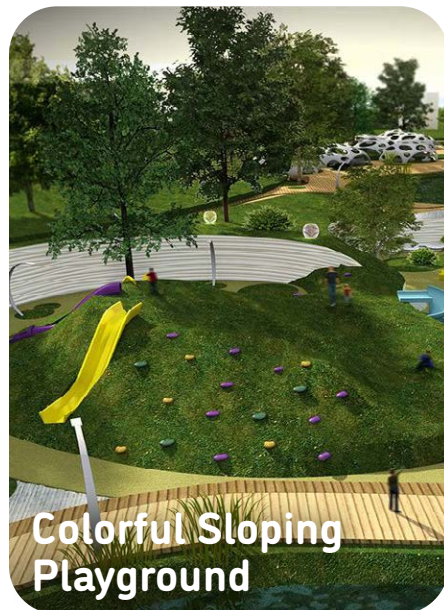
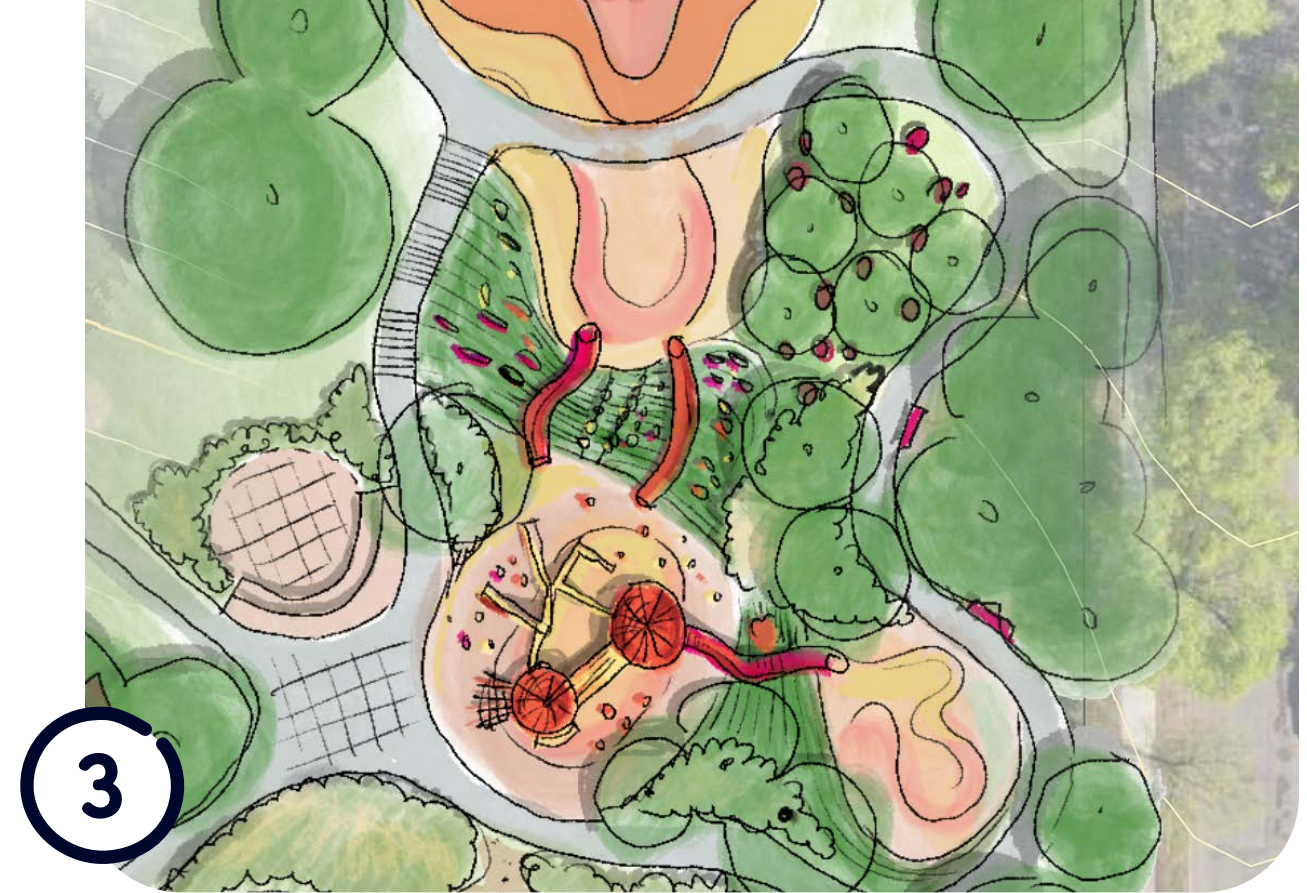
- Full court positioned East-West
- Additional half-court with multi-directional basketball hoop
- Potential to incorporate fencing/striping for futsal



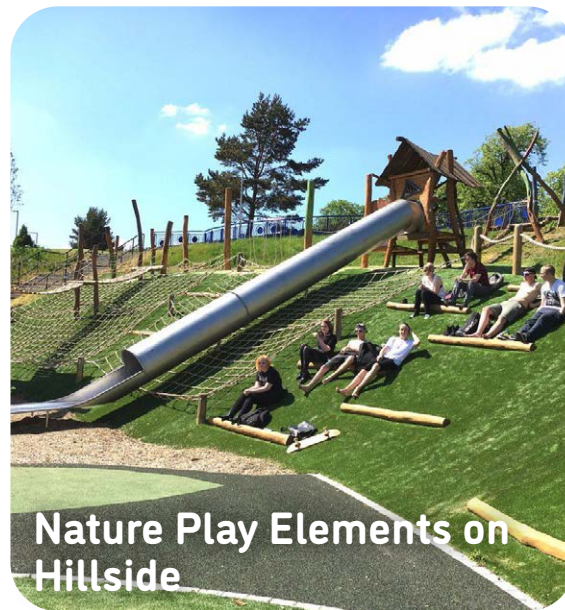
CONCEPT A

Playground Area

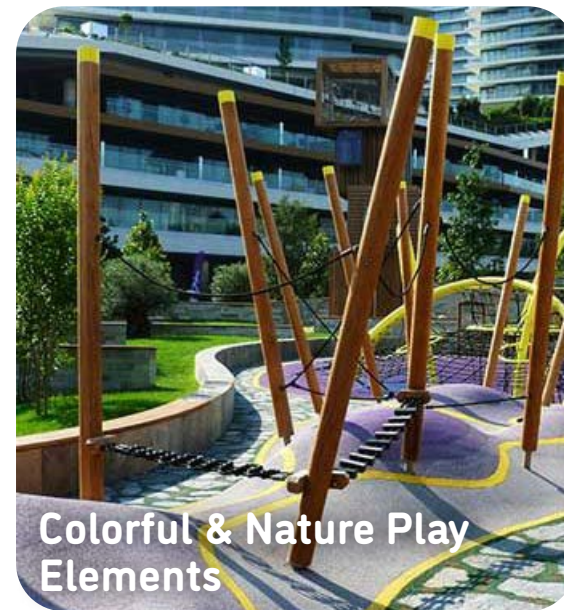
- Natural play elements with pops of color incorporated in steep hillside
- Large play structure at top of hill
- Flexible seating grove to overlook play and basketball courts
- Accessible walkway down slope



Colorful Sloping Playground



Nature Play Elements on Hillside



Colorful & Nature Play Elements



Large Play Structure



Flexible Seating Grove

CONCEPT A

Learning Garden

- Meandering pathways through dips/mounds of native plantings
- Outdoor classroom overlooking lake and rest of park
- Educational elements and seating woven in throughout



Learning Gardens with Native Plantings

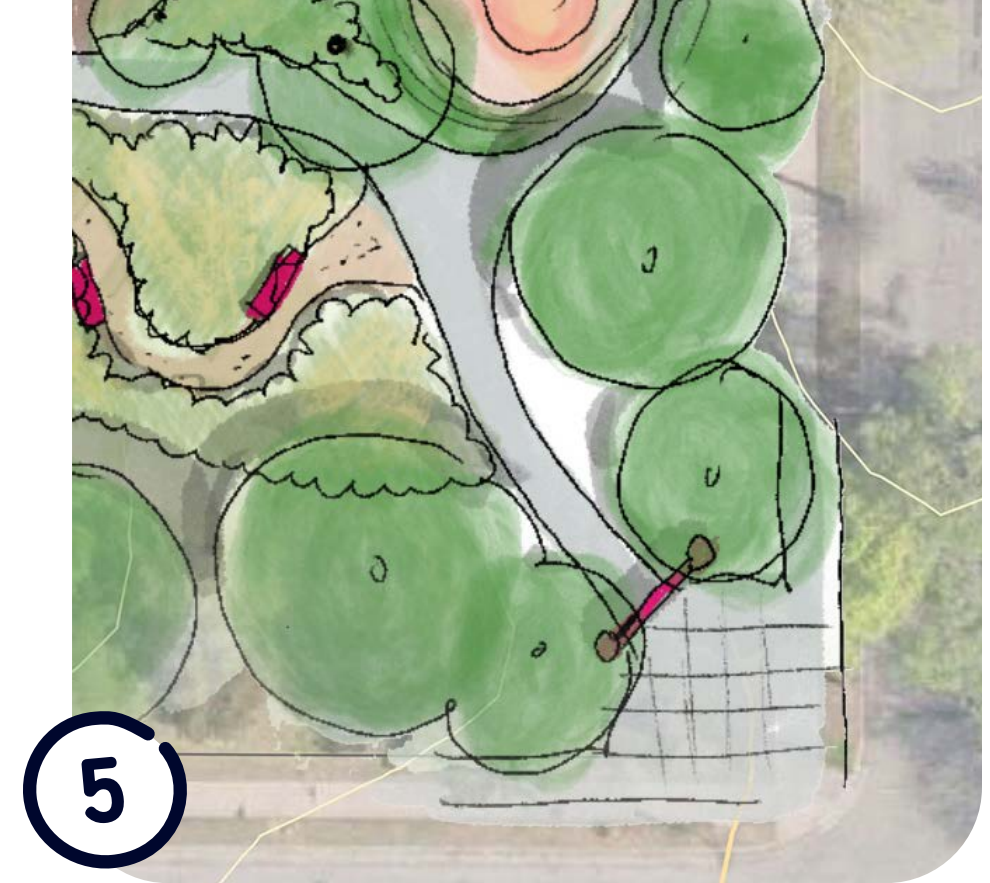


Outdoor Classroom (Form Only)

CONCEPT A

Gateway

- At entrance of park off of 35th Street and 15th Avenue
- Single gateway element
- Opportunity for Public Art



CONCEPT B

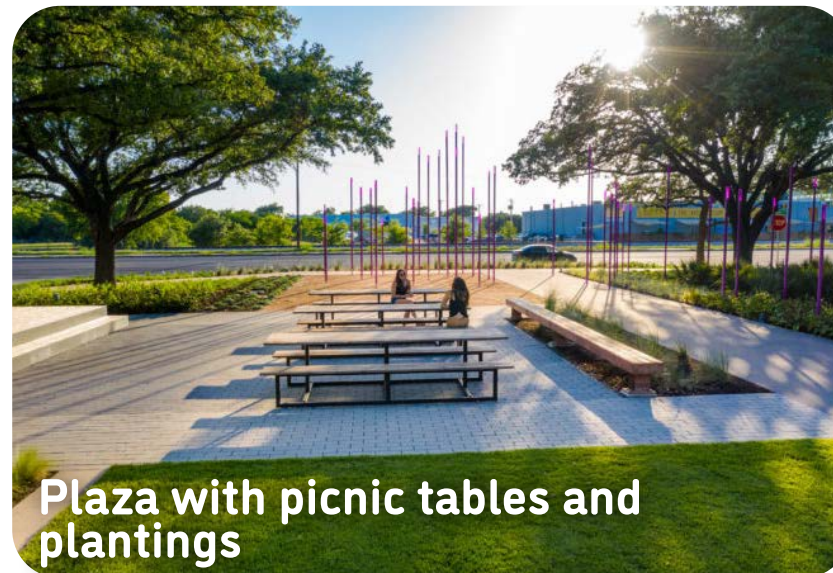
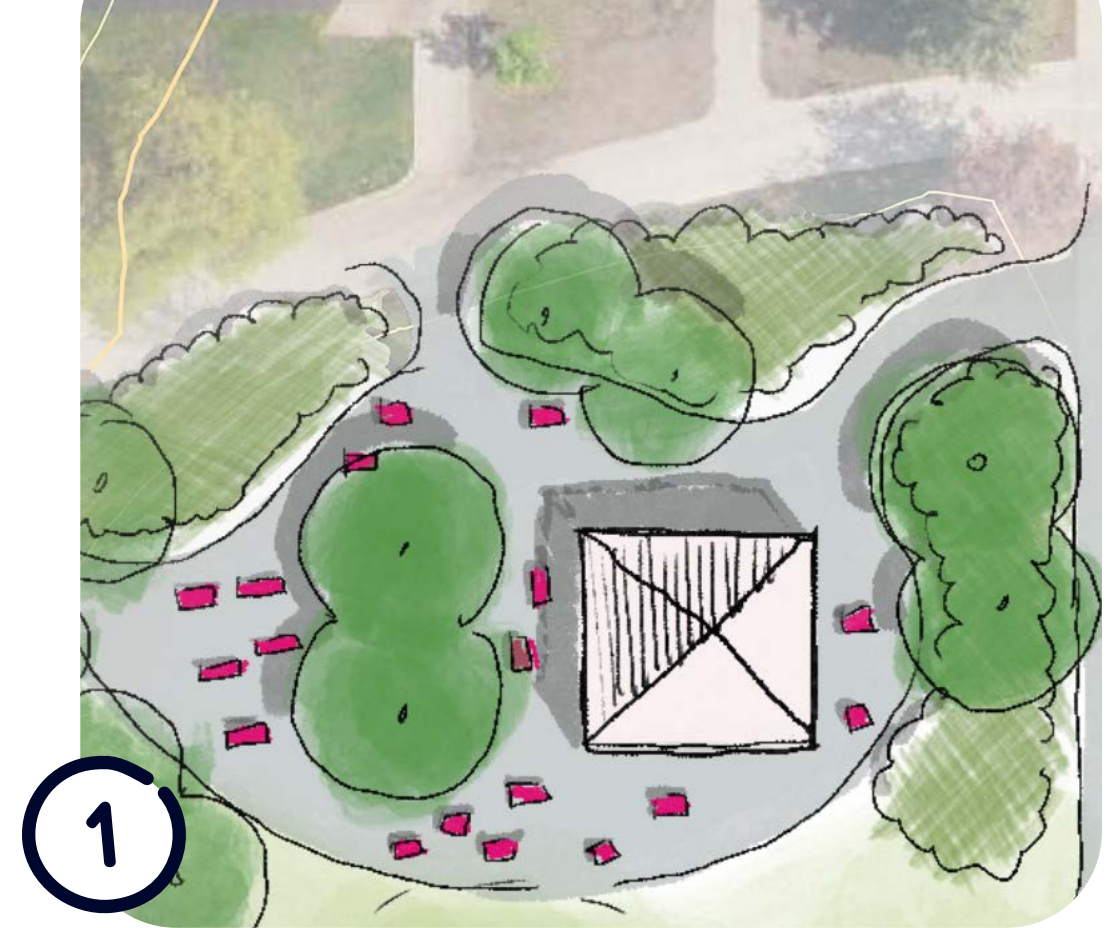
- Public Art Opportunity
- Picnic Plaza With Tree Grove
- Picnic Pavilion (50ftx50ft)
- Renovated Turf/Flexible Event Area
- Existing Sledding Hill to Remain
- Two Full Basketball Courts
- Accessible Pathway
- Seat Wall/Retaining Wall
- Prairie Plantings/ Climbing Boulders on Hillside
- New Stairway and Railing
- Native Learning Garden
- Nature Playground
- Picnic Area, Typ.
- Repurposed WPA Sand Area with New Equipment and Seating
- Nature/Water Play Area
- Large Play Structure with Lots of Activities
- Artful Gateway Path
- Renovated Park Sign
- Resurfaced Pathway (if budget allows)



CONCEPT B

Picnic Plaza Area

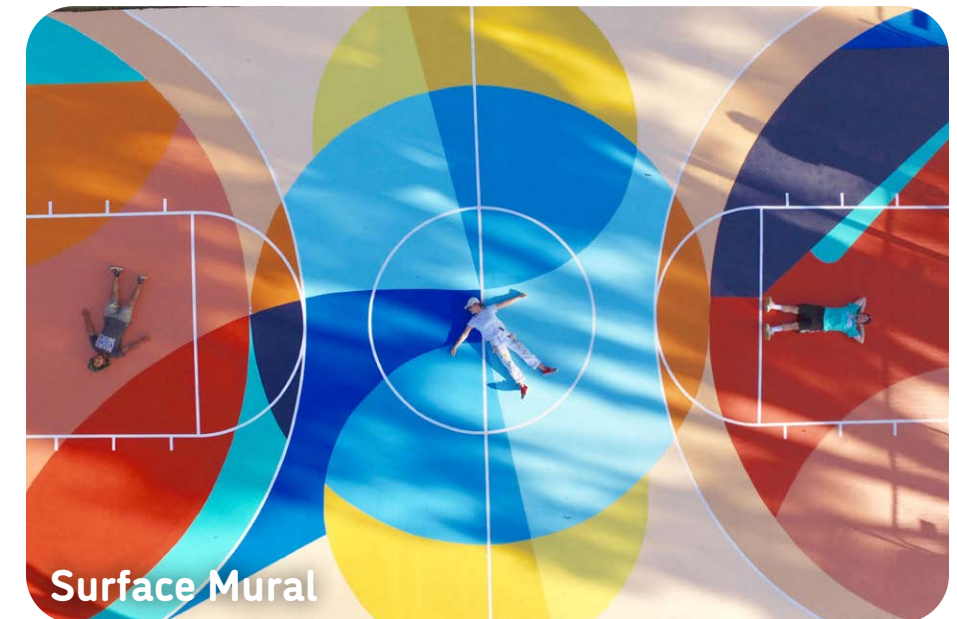
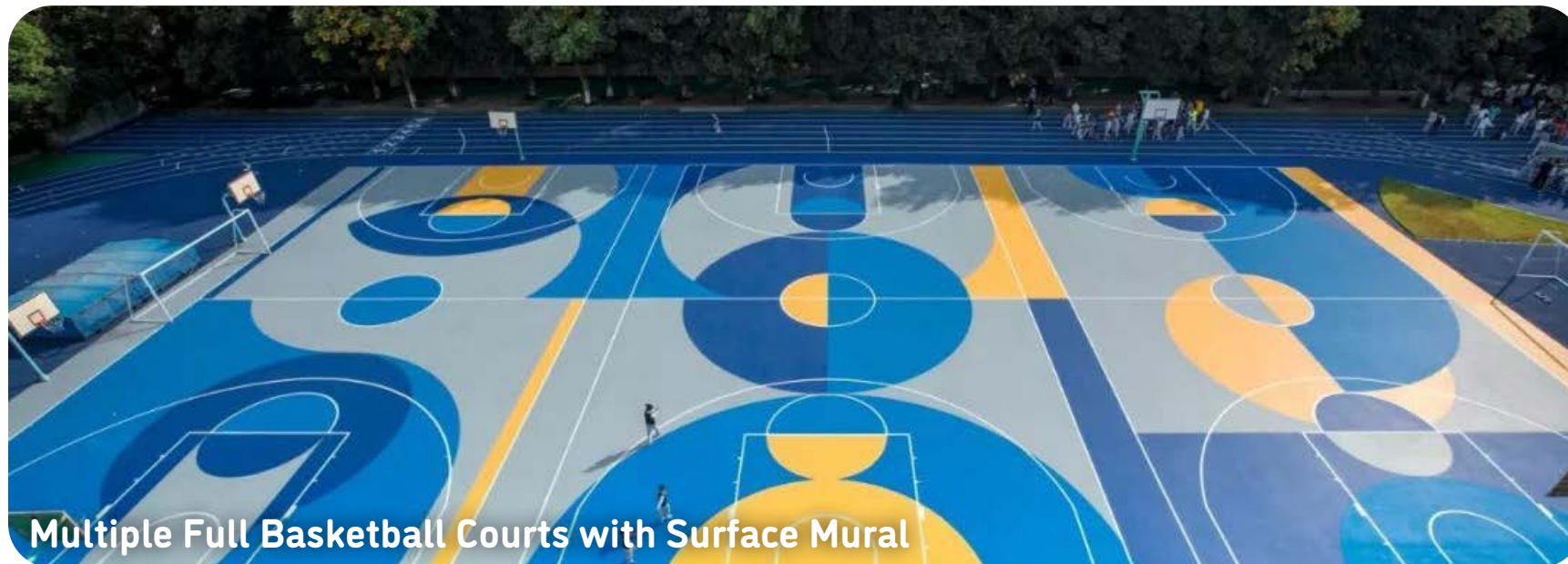
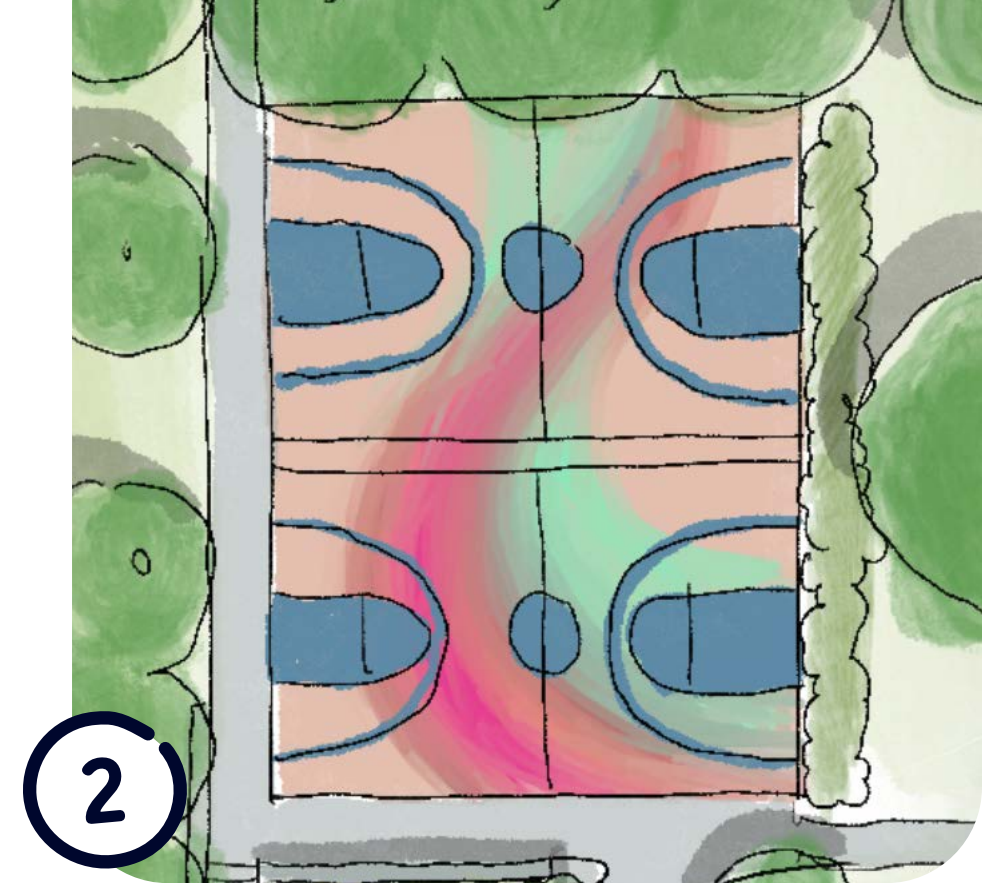
- One picnic pavilion
- Maintain similar footprint to existing plaza area
- Permeable pavement
- Flexible seating
- Incorporates tree plantings



CONCEPT B

Basketball Court Area

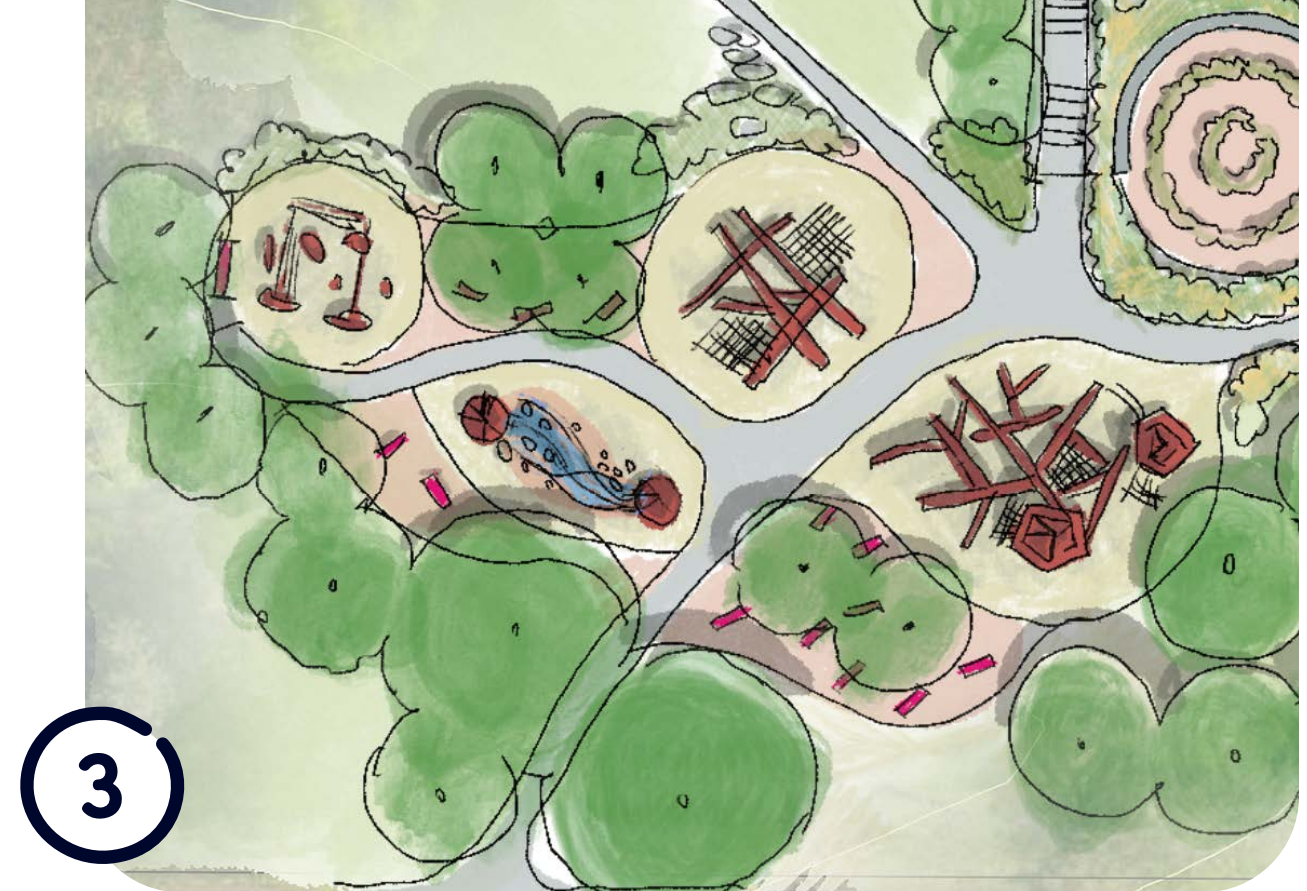
- Two full courts positioned East-West



CONCEPT B

Playground Area

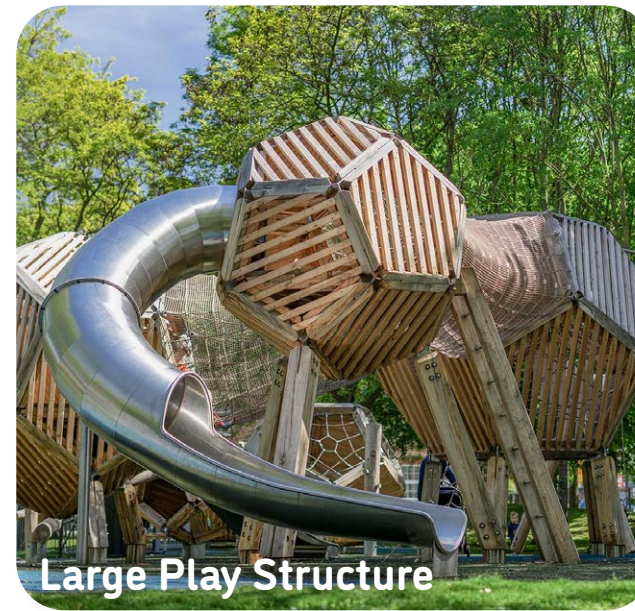
- Series of different play areas on hilltop with informal seating/gathering areas
- Natural play elements and large play structure
- Water play element
- Repurposed WPA Sand Area with new equipment and seating



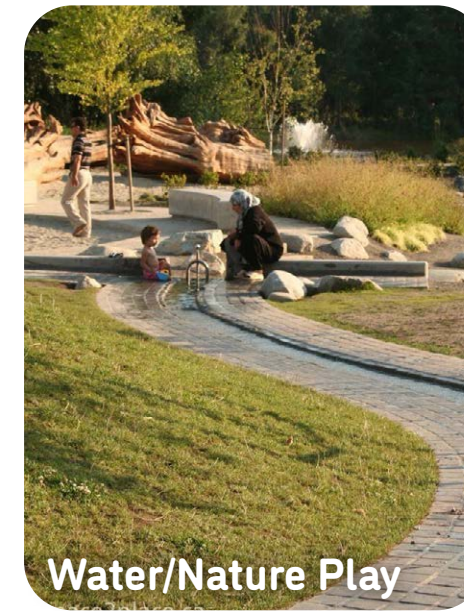
Nature Play



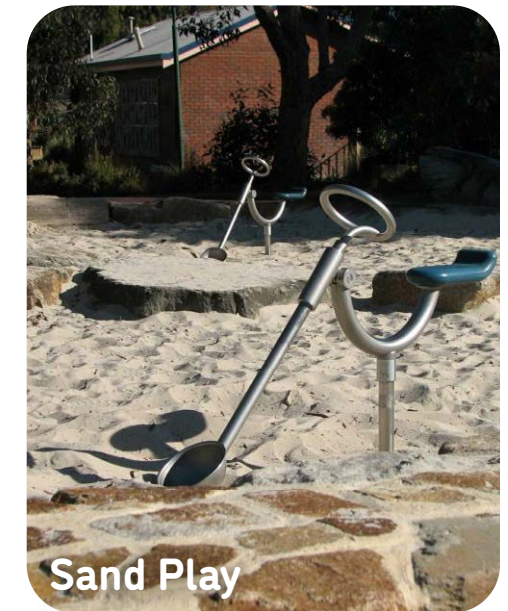
Nature Play



Large Play Structure



Water/Nature Play



Sand Play

CONCEPT B

Learning Garden

- Accessible pathway leading down slope with native plantings and boulders
- Outdoor classroom at top of hill
- Educational elements and seating woven in throughout



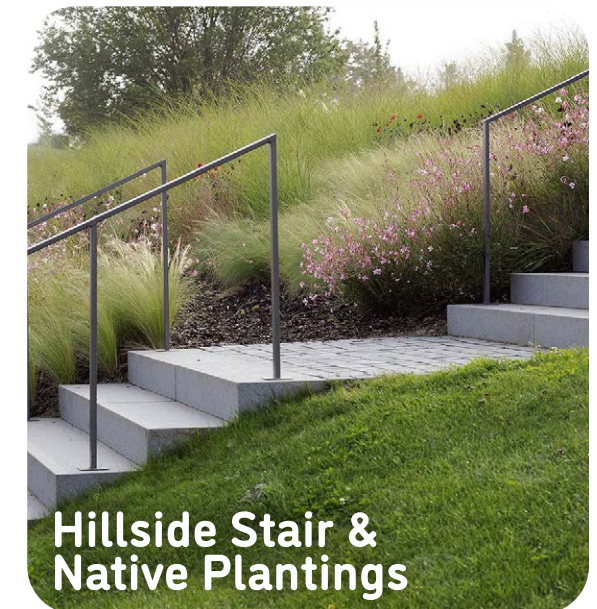
Nature Play/Learning Gardens
with Native Plantings



Seat Wall



Learning Gardens



Hillside Stair &
Native Plantings

CONCEPT B

Gateway

- At entrance of park off of 35th Street and 15th Avenue
- Gateway trail extending into park
- Opportunity for Public Art



OPPORTUNITIES TO INCORPORATE SUSTAINABLE PRACTICES

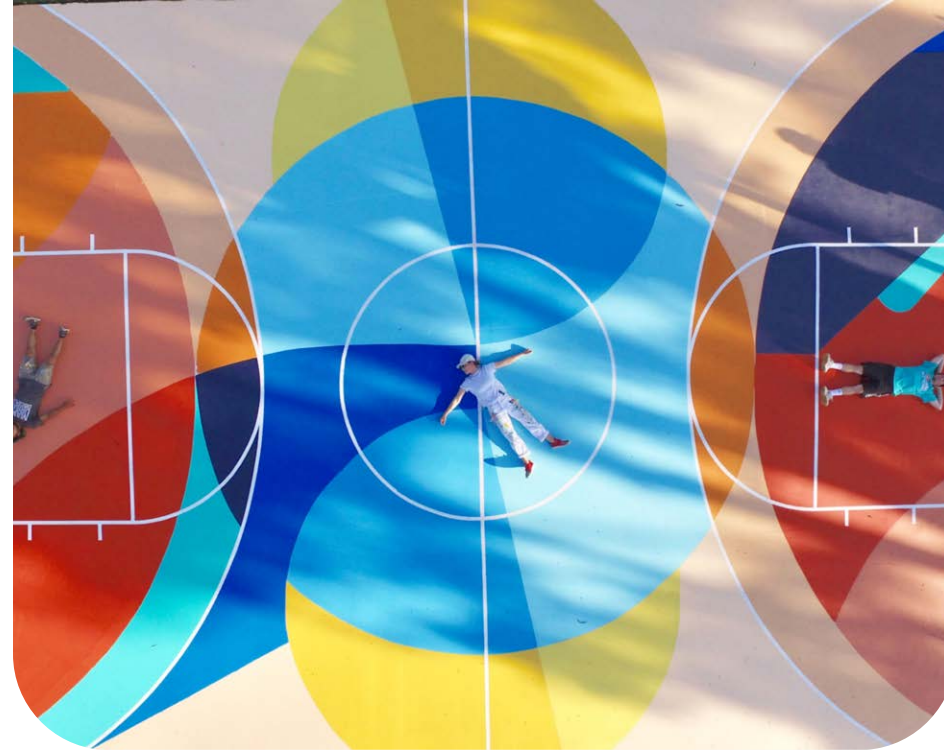
Integrate stormwater management within learning gardens, native planting areas, and throughout play area to capture runoff and reduce phosphorus load

- Include pervious pavers in paved areas, if budget allows, to promote infiltration
- Incorporate native plantings to promote pollinator species and connect to larger regional habitat network
- Plant bee lawn vs conventional turf
- Protect existing trees



OPPORTUNITIES TO INCORPORATE INTEGRATED PUBLIC ART AND EDUCATION

- Gateway element
- Basketball court or surface murals
- Learning gardens
- Seating elements
- Stair railings
- Lighting
- Educational elements within garden areas
- Paving patterns
- Integrated signage



ANTICIPATED TIMELINE



Project Process

NEXT STEPS

- Please let us know your thoughts!
- Input received tonight and online will help create a refined concept which will be posted online in November for further comment to create a final concept
- Final concept will go to a public hearing in December
- Once the Board approves the concept, it will move into Design Development

PROJECT CONTACT INFO:

CRYSTAL PASSI,
MPRB DESIGN PROJECT MANAGER

cpassi@minneapolisparcs.org |
office: 612.230.6455