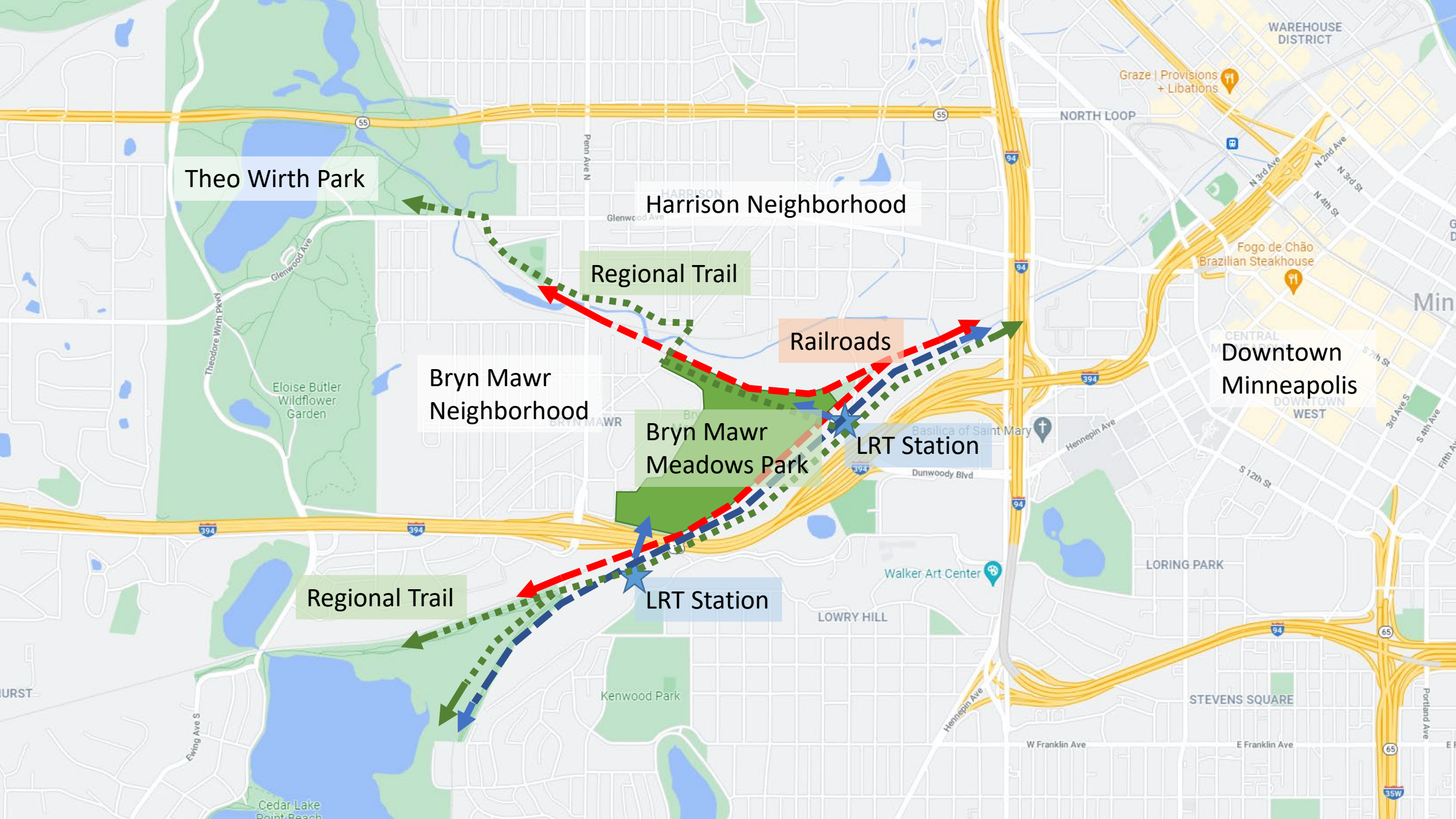


Bryn Mawr Meadows Park Concept Plan Approval

November 3, 2021



Theo Wirth Park

Harrison Neighborhood

Regional Trail

Railroads

Bryn Mawr Neighborhood

Bryn Mawr Meadows Park

LRT Station

Downtown Minneapolis

Regional Trail

LRT Station

LOWRY HILL

Kenwood Park

STEVENS SQUARE

W Franklin Ave

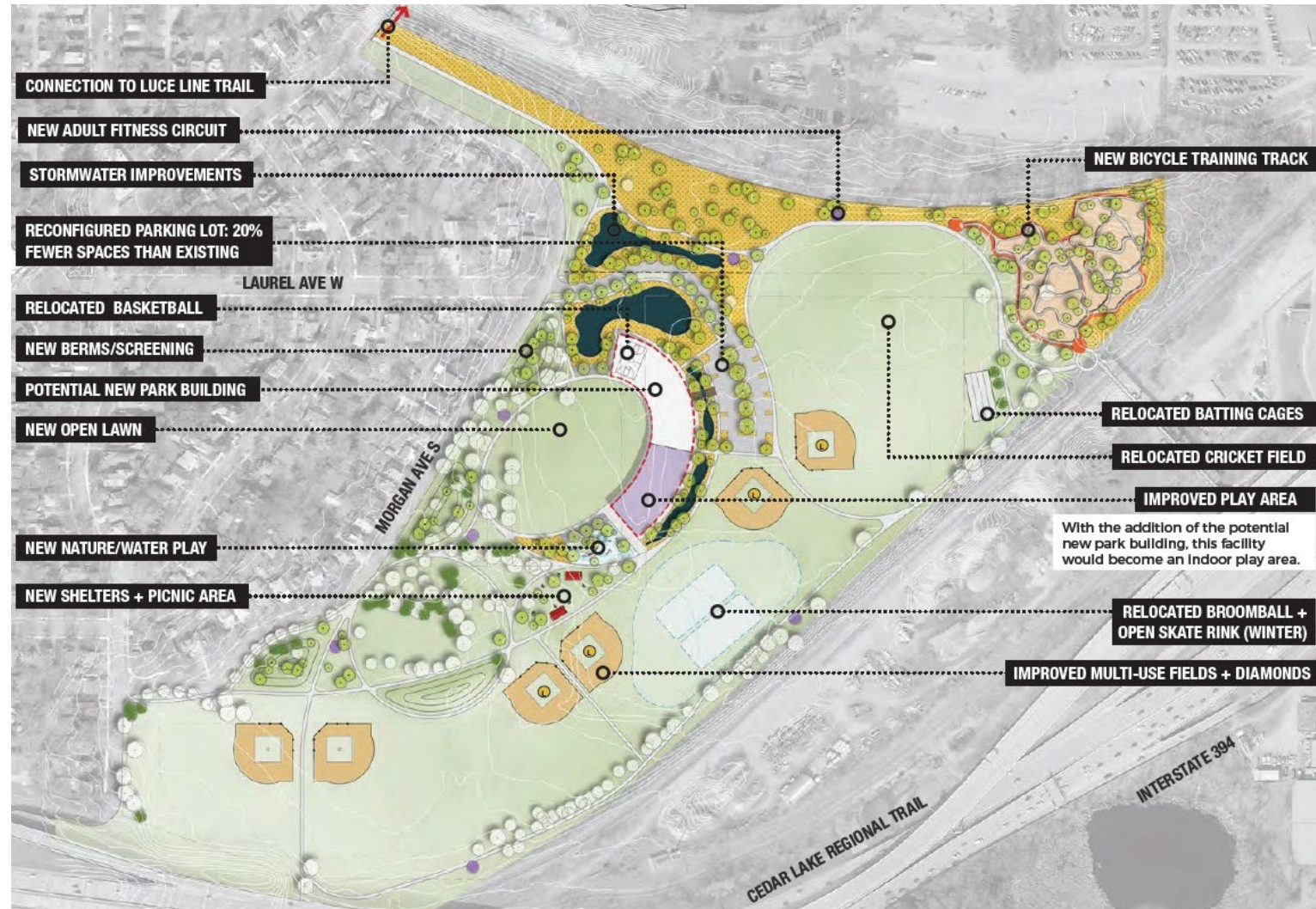
E Franklin Ave

Portland Ave

Building on the North Service Area Master Plan

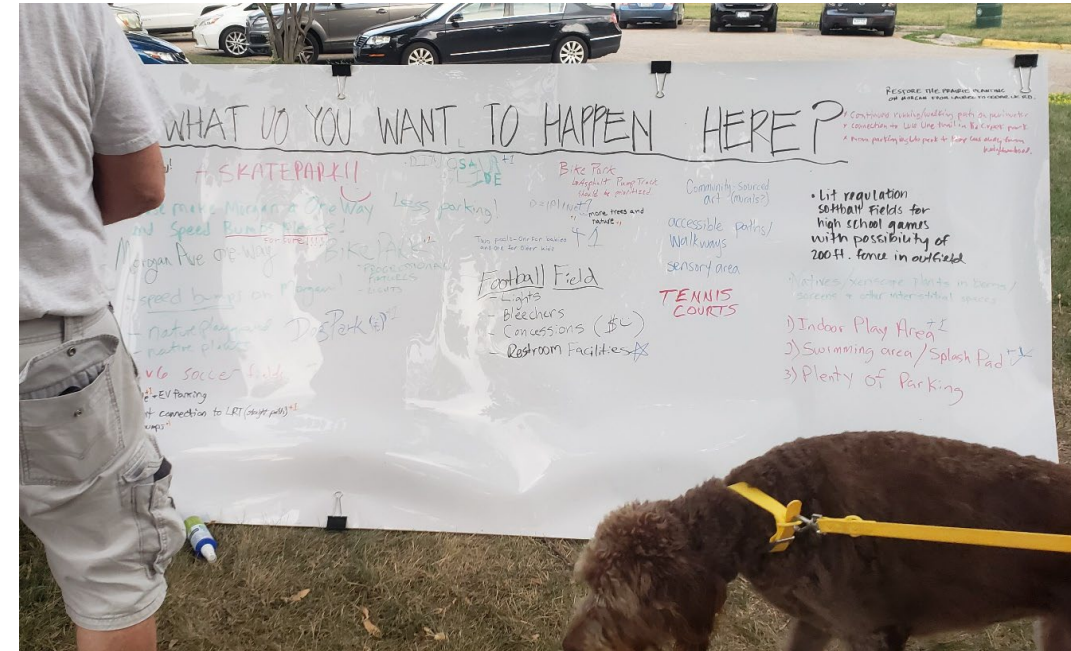
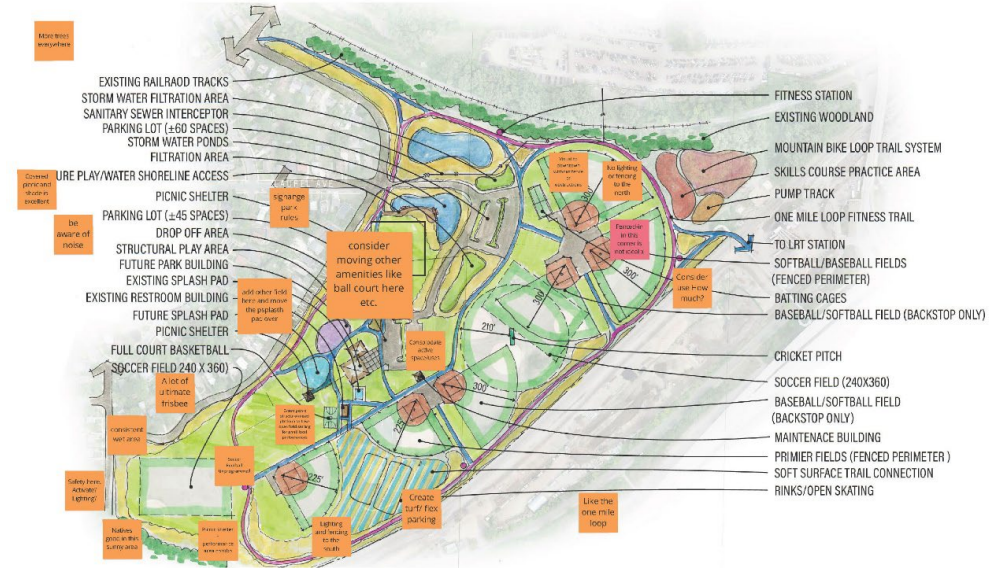
- Board approved plan in 2019
- Establishes an overall program for the park
- Provides a cost estimate
- It's a funding tool and guiding document

It guides this Concept Plan that will in turn construct elements of it.



Engaging the Community

- Three stages of engagement:
 - Determining priorities of NSAMP elements – July 27, 2021
 - Feedback on two concepts – September 9, 2021
 - Feedback on draft preferred concept – October 5 and 9, 2021
- Tools for gathering input:
 - Mailers, in-park postings, community newspaper, open house conversations, individual meetings and phone calls, three online surveys, and two digital whiteboards



Engaging our Staff

- Received input on several aspects:
 - Natural areas
 - Parking lot layout and snow storage
 - Parking lot stormwater BMPs
 - Maintenance building needs
 - Broomball rink operations
 - Recreation needs of new fields
 - Play equipment manufacturers
 - Lighting, field and general
 - Emergency vehicle access



Engaging our Partners

- Bassett Creek Watershed Management Commission and City, Water Quality Project = two ponds and natural plantings.
- City, Irving Ave N Sanitary Sewer = reliable and safe service to park.
- Project partners are helping with:
 - Water quality
 - Aesthetic appearance
 - Additional habitat
 - Interactivity
 - Infrastructure improvements to benefit MPRB and neighbors



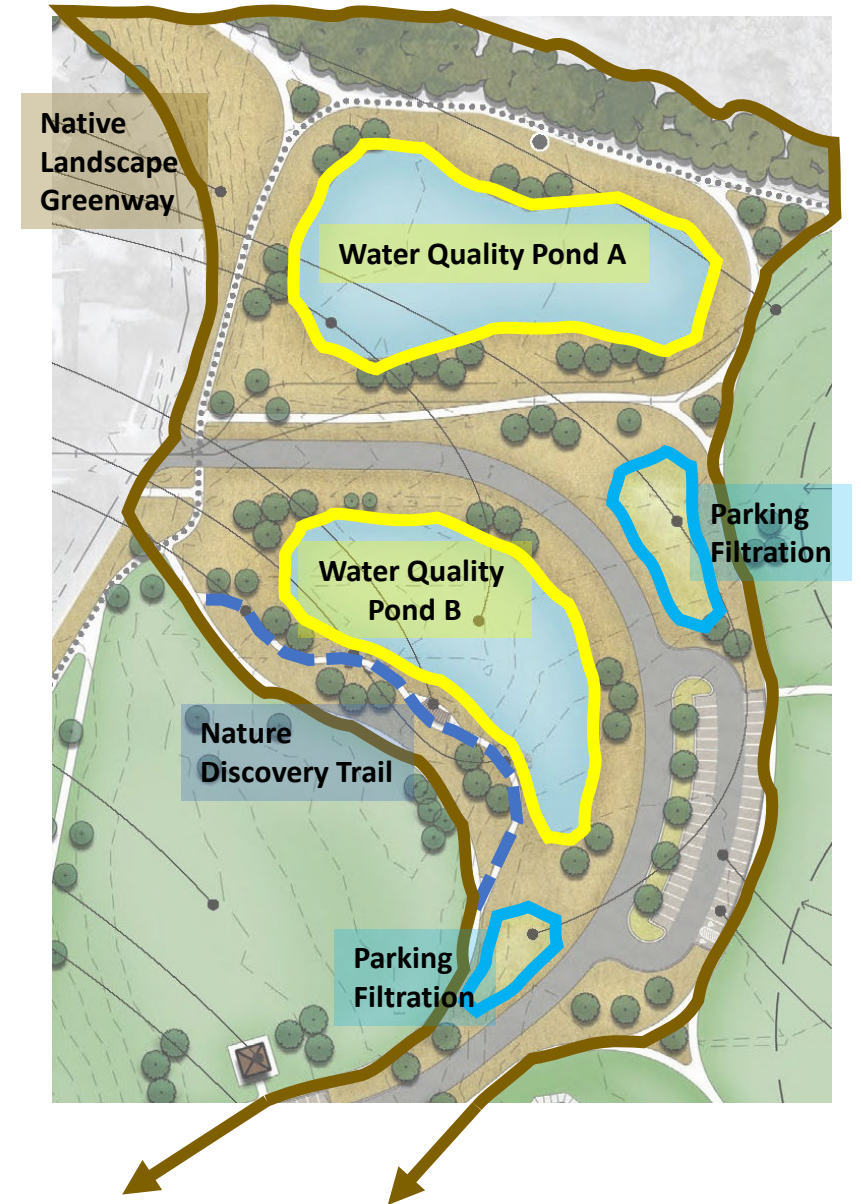
Minneapolis
Park & Recreation Board




Minneapolis
City of Lakes

Two Projects in One


- Watershed Commission providing \$1M for water quality project
- Couples seamlessly with Park Project
- Adds amenities:
 - Visual appeal of open water
 - Habitat for insects, birds, and other animals
 - Replaces mown turf areas
 - Adds opportunities for play and experience
- The start of the Native Landscape Greenway



Native Landscape Greenway

- Key component to plan
- Breaks up massive mowed turf areas
- Corridor for responsible movement of stormwater off site
- Reflects community direction for change in aesthetic of park spaces
- Parks don't need to be mown turf and tree canopy
- Insect, bird, and animal habitat



An aerial photograph of a large park area, likely in Chicago, with the city skyline visible in the background. The park features several ponds and a network of walking paths. A semi-transparent grey box with the text "Water Quality Ponds" is overlaid on the left side of the image. Within this box, a specific area of the park is highlighted in blue, showing a series of interconnected ponds and surrounding vegetation. Other ponds in the park are shown in a light grey tone. The background includes a multi-lane highway and the dense urban landscape of a city.

Water Quality Ponds



Parking and
Stormwater BMPs



Broomball Meadow

Native Landscape Greenway



Free Play Field

Basketball

Wading Pool

Park Building

Play and Picnic

An aerial architectural rendering of a park development. The park features a large green field on the left, a baseball field in the center, and several blue ponds on the right. A network of white paths winds through the park, connecting various areas. Numerous trees are planted throughout the landscape. In the background, a city skyline with several tall buildings is visible under a hazy sky. A multi-lane highway runs horizontally across the middle ground. The foreground shows a residential street with houses and parked cars.

Expanded Cricket Field

Premier Ball Field

Premier Ball Field

Bike Park





This aerial rendering depicts a large-scale park development. The foreground and middle ground are filled with green spaces, including several baseball fields with brown bases and green grass. A network of white and grey paths winds through the park, connecting various areas. There are several water features, including a large blue pond on the left and several smaller, irregularly shaped blue ponds scattered throughout. Numerous trees of varying sizes are planted across the landscape. In the background, a dense urban skyline with numerous skyscrapers is visible under a hazy sky. A multi-lane highway runs horizontally across the middle ground, separating the park from the city. The overall scene is a blend of natural park elements and urban infrastructure.

Future Phase Fields and Trails

Concept Plan



Phase 1 Improvements



Materials & Character

ATHLETIC COURTS + FIELDS



A Premier Fields



Outfield Fence



B Batting Cage



C Cricket Pitch



Dugout

D FITNESS STATIONS



E BIKE SKILLS COURSE



F RINKS + OPEN SKATING



G COMMUNITY OPEN SPACE



Movies in the Park



Yoga in the Park

Active Recreation

Materials & Character

H NATURE PLAY AREA



I STRUCTURED PLAY AREA



J PICNIC SHELTER



K MAINTENANCE BUILDING



Play Areas and Structures

Materials & Character

L STORMWATER PONDS



POLLINATOR PLANTINGS + LOW-MAINTENANCE LANDSCAPES



Native Grasses and Flowers w/Tidy Path Edging



Native Prairie Plantings (Dry Areas)



Sedge Meadow (Wet Areas)



No-Mow Fescue

M PARKING LOT



Stormwater Infiltration



Stormwater Treatment Plantings



Pervious Pavers + Planting Islands



Plantings Guide Pedestrian Circulation

Plants and Stormwater Elements

Costs and Next Steps

Phase One Improvements = \$3.2M

- Bid at optimal time in mid-winter 2021
- Inclusion of bid alternates for maximum assurance of construction

Public Hearing

Bryn Mawr Meadows Park concept Plan Approval

November 3, 2021

SANITARY SEWER INTERCEPTOR
(CITY OF MINNEAPOLIS)
NATIVE VEGETATION
FILTRATION BASINS
STORM WATER PONDS
POND OVERLOOK WITH SHADE STRUCTURE
NATURE PLAY/WATER ACCESS
NATURE DISCOVERY/ADVENTURE TRAIL

FREE FIELD SPACE
24' X 24' PICNIC SHELTER
PERMEABLE PAVERS
PICNIC AREA
FUTURE PARK BUILDING
K-5 STRUCTURED PLAY AREA

PRE-K STRUCTURED PLAY AREA
18' X 18' PICNIC SHELTER
SPLASH PAD
EXISTING RESTROOM/WARMING BUILDING
YOUTH SOCCER FIELDS (135' X 210')
CRICKET PITCH
BASEBALL/SOFTBALL FIELDS (BACKSTOP ONLY)

EXISTING WOODS
EXISTING CRICKET BOWLING CAGES
MOUNTAIN BIKE AREA

LRT STATION
(METRO TRANSIT)
NEW PEDESTRIAN BRIDGE
(METRO TRANSIT)

SOCCER FIELD (240' X 360')

BASEBALL/SOFTBALL FIELDS (BACKSTOP ONLY)

PARKING LOT (46 SPACES)
PERMEABLE PAVERS
BATting CAGE
PREMIER FIELDS (PERIMETER FENCE)

PARKING LOT (53 SPACES)
MAINTENANCE BUILDING
BASKETBALL COURT
OPEN SKATING
BROOMBALL MEADOW

ONE MILE LOOP FITNESS TRAIL

FITNESS STATION
PREMIER FIELD LIGHTS
PREMIER FIELDS (PERIMETER FENCE)

