

NORTH COMMONS PARK MASTER PLAN GUIDING PRINCIPLES + REIMAGINING THE CIVIC COMMONS

The master plan for North Commons Park envisions a significant new community, cultural, recreation, and arts center serving as the hub of the north side. Reimagining the Civic Commons which works to counter the trends of increasing economic segregation, social isolation and distrust, is a collaboration of national foundations and local civic leaders reimagining civic assets as a solution. Reimagining the Civic Commons works to build a sense of community that brings people of all backgrounds back into public life as stewards and advocates, shaping their city's future. Reimagining the Civic Commons is centered on four outcomes, civic engagement, socio economic mixing, value creation, and environmental sustainability. Alignment between North Commons Park Master Plan Guiding Principles and Reimagining the Civic Commons four outcomes is described here.

Civic Engagement

Building a sense of community that brings people of all backgrounds back into public life as stewards and advocates, shaping their city's future.

- ① Seek **partnerships** in all aspects of **implementation**, including funding, operations, and programming.
- ④ Design of all facilities should be **welcoming to the north side community** and create the feeling that local neighbors are welcome in these spaces. Local artists, designers, and craftspeople could contribute to making the design welcoming.
- ⑧ **Consult** with the **north side community** and residents around the park on schematic and detailed design of park elements.
- ⑬ Decisions around access, hours, and fees should be made through a **community-engaged process**, in consultation with park users and potential park users.
- ⑭ **Programming** should be **tailored** to what people want to do in the park.

Socioeconomic Mixing

Creating places where everyone belongs, and that generate opportunities for shared experience among people of all incomes and backgrounds.

- ② Ensure that agreements with partners do not unduly limit **community access** to the facility.
- ④ Design of all facilities should be **welcoming to the north side community** and create the feeling that local neighbors are welcome in these spaces. Local artists, designers, and craftspeople could contribute to making the design welcoming.
- ⑪ Facilities should **prioritize access** by the **north side** community.
- ⑫ **Access** to facilities should be **affordable** to north side residents.
- ⑰ Facility leadership and staff should reflect the north side community, in all its racial and **cultural diversity**.

Value Creation

Encouraging additional investments in neighborhoods so that they are better places to thrive.

- ③ Coordinate with City of Minneapolis on redevelopment of the block east of the YMCA as a **mixed-use development** that could include **district parking** available to park users.
- ④ Design of all facilities should be **welcoming to the north side community** and create the feeling that local neighbors are welcome in these spaces. Local artists, designers, and craftspeople could contribute to making the design welcoming.
- ⑩ Reduce or **eliminate community impact** by constructing replacement facilities prior to decommissioning older facilities, or by creating partnerships to provide space for these activities. This is especially true for baseball and for the recreation center itself.
- ⑮ Maintenance and program **staffing** should be **adequate to operate** this larger facility and the site around it, and should be determined through careful analysis of real staffing needs.
- ⑯ **Repairs** should be undertaken quickly, to ensure the park does not enter the "vicious cycle" of neglect, which can then invite further damage and vandalism.

Environmental Sustainability

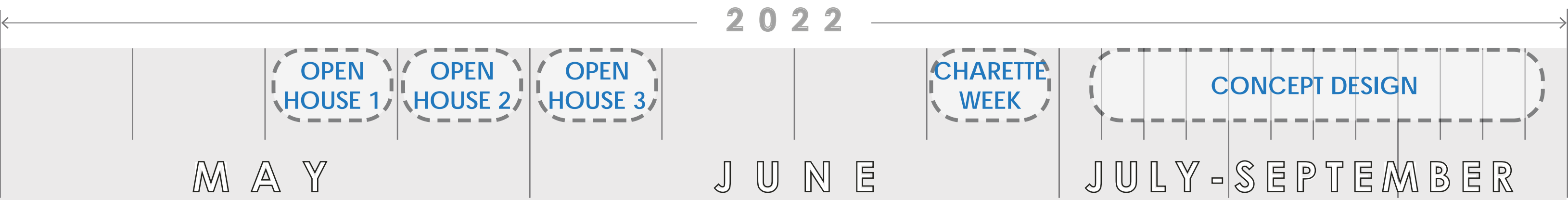
Increasing access to nature and creating environmentally friendly places, easily reached by walking, biking or transit.

- ⑤ **Minimize tree removal**, especially of significant overstory trees, through careful design and detailing.
- ⑥ **Protect trees** during construction, to ensure they are not negatively impacted by construction activities, in consultation with MPRB's Forestry Department.
- ⑦ **Replace any trees** removed as a result of construction with an equivalent or greater caliper inch total of trees, in coordination with MPRB's Forestry Department.
- ⑨ Seek to **minimize visual impact** of facilities on nearby homes through vegetation, depressing facilities down into the earth, and/or high quality façade design.

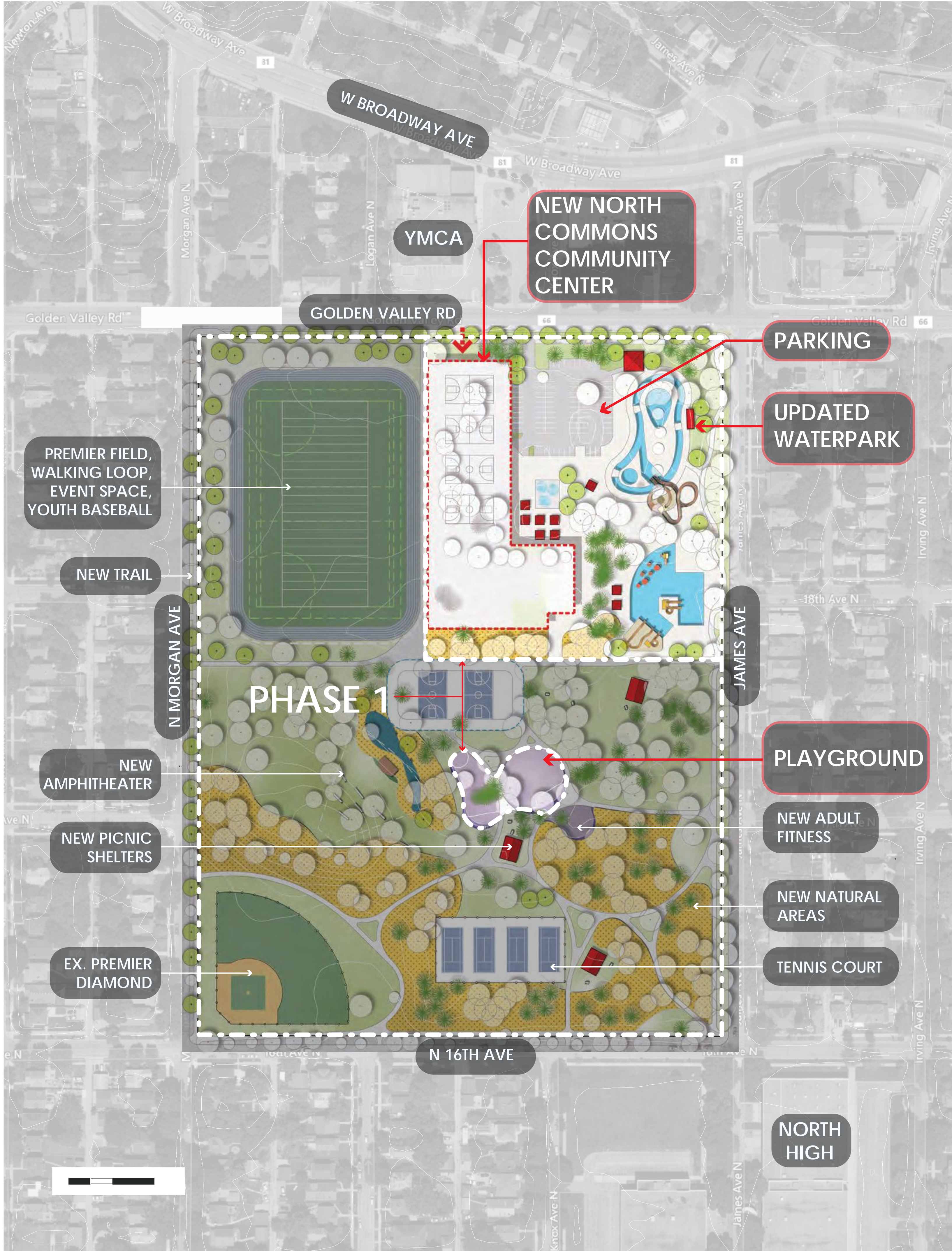
EXISTING SITE



SCHEDULE



MASTER PLAN



Learn more about the project



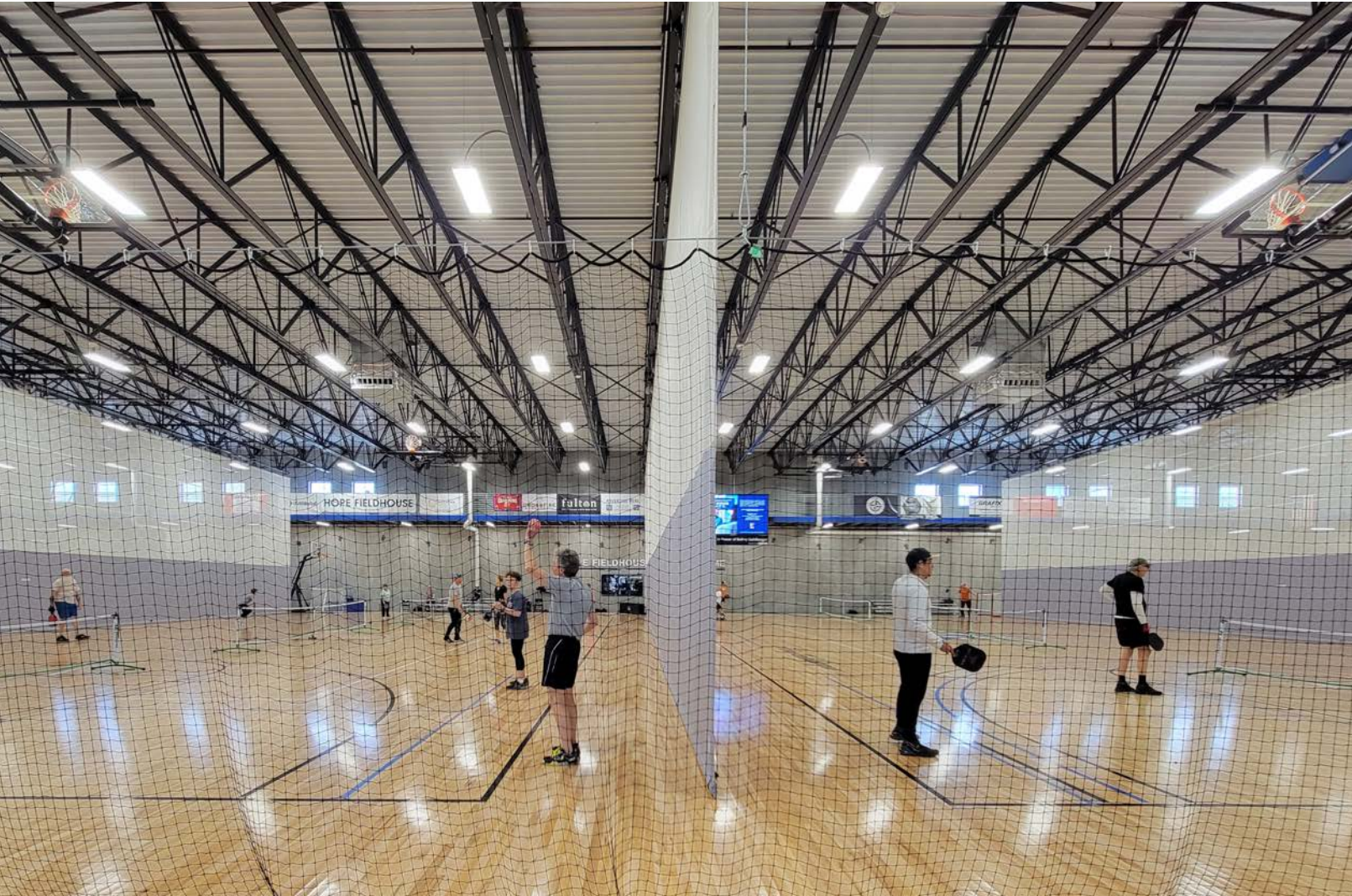
Provide additional comments anywhere on the board

NORTH COMMONS PARK COMMUNITY CENTER- ACTIVITIES

When you think about transforming North Commons Park into a community, athletics, arts, and recreation hub for the northside, what activities do you see yourself, family, and friends doing there?

Place up to 4 dots on this box

PLAYING OR WATCHING SPORTS AND SPORTS TOURNAMENT



Place a dot on this image

INDOOR FITNESS



Place a dot on this image

ATTENDING COMMUNITY EVENTS



Place a dot on this image

WORKING ON SCHOOL WORK



Place a dot on this image

LEARNING NEW SKILLS – ARTS/CRAFT/FABRICATION



Place a dot on this image

COOKING/TAKING COOKING CLASSES



Place a dot on this image

MEETING NEW PEOPLE / HANGING OUT



Place a dot on this image

BUSINESS DEVELOPMENT- OFFICE COWORKING



Place a dot on this image

NORTH COMMONS PARK WATER PARK- ACTIVITIES

What activities are most important to you at the future North Commons Park Water Park?

Place up to 2 dots on the images

EXERCISE/TRAINING/THERAPY



Place a dot on this image

LEARN TO SWIM ACTIVITIES



Place a dot on this image

SMALL CHILD RECREATION (SHALLOW WATER AND SPLASH FEATURES)



Place a dot on this image




OLDER CHILD AND ADOLESCENT RECREATION (DEEPER WATER, SLIDES, DIVING)



Place a dot on this image

What age group are you most interested in providing water features for at the future North Commons Water Park?

Place a dot in the appropriate box

 0 - 5 Years	
 6 - 12 Years	
 12 Years - Older	

What is your most used/enjoyed feature of the existing pools at North Commons Water Park?

Place a dot in the appropriate box

EXISTING SHALLOW POOL AND PLAY STRUCTURE	
EXISTING DROP SLIDE POOL	
EXISTING LAP POOL	

NORTH COMMONS PARK WATER PARK- FEATURES

What features are most important that the future North Commons Park Water Park provide?

Place up to 5 dots on this board

WATERSLIDES



Place a dot on this image

LAP SWIMMING/SWIM LESSONS



Place a dot on this image

AN AREA WITH SHALLOW WATER & SMALL SPRAY FEATURES- FOR SMALL CHILDREN



Place a dot on this image

SHADED DECK AREA



Place a dot on this image

CLIMBING WALL



Place a dot on this image

LAZY RIVER



Place a dot on this image

CURRENT CHANNEL



Place a dot on this image

OBSTACLE COURSE



Place a dot on this image

NORTH COMMONS PARK COMMUNITY CENTER- BUILDING PROGRAM



What spaces are most important that the future North Commons Park Community Center provide?

Place up to 5 dots on this board

MULTI-SPORT GYM



Place a dot on this image

PLACES TO BE A SPECTATOR



Place a dot on this image

WALKING TRACK



Place a dot on this image

FITNESS AREA



Place a dot on this image

MAKER SPACE



Place a dot on this image

LARGE MEETING ROOMS



Place a dot on this image

SMALL HANGOUT SPACES



Place a dot on this image

COMMUNITY/INCUBATOR KITCHEN



Place a dot on this image

ART STUDIOS



Place a dot on this image

CONCESSIONS



Place a dot on this image

SMALL GAME ROOM



Place a dot on this image

CLIMBING WALL



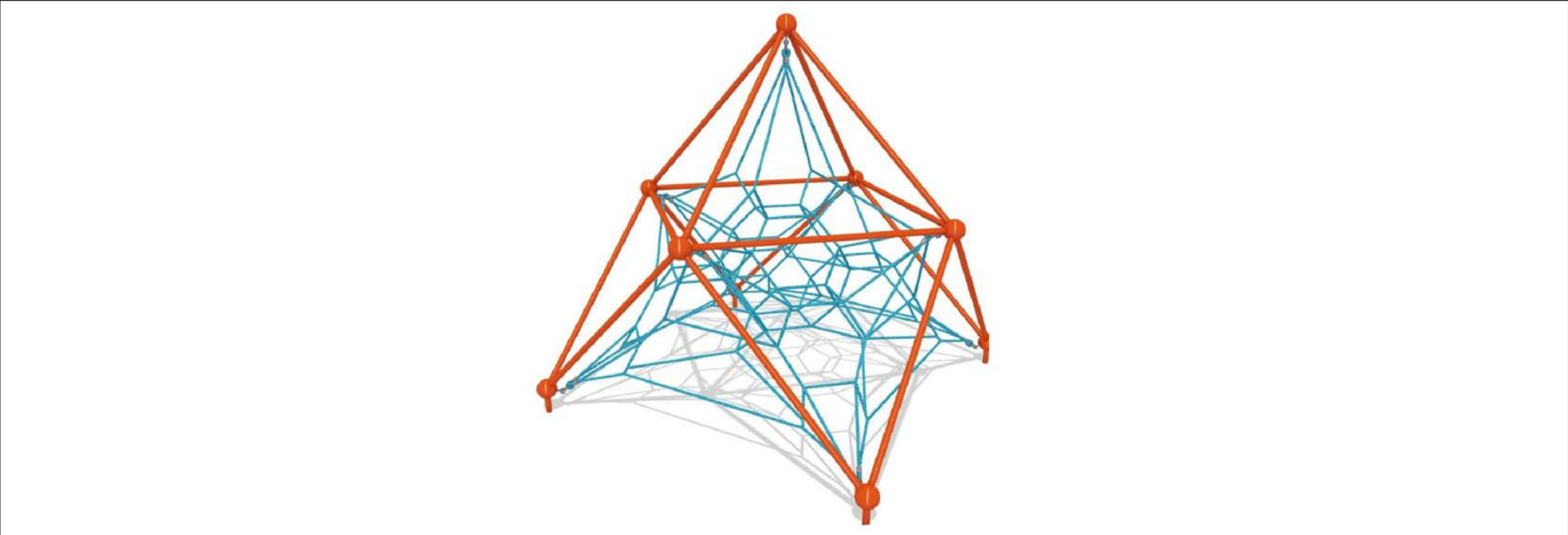
Place a dot on this image

NORTH COMMONS PARK PLAYGROUND- EQUIPMENT

What kind of equipment do you want to see in the renovated playground area?

Place up to 4 dots on this board

NETS / ROPE



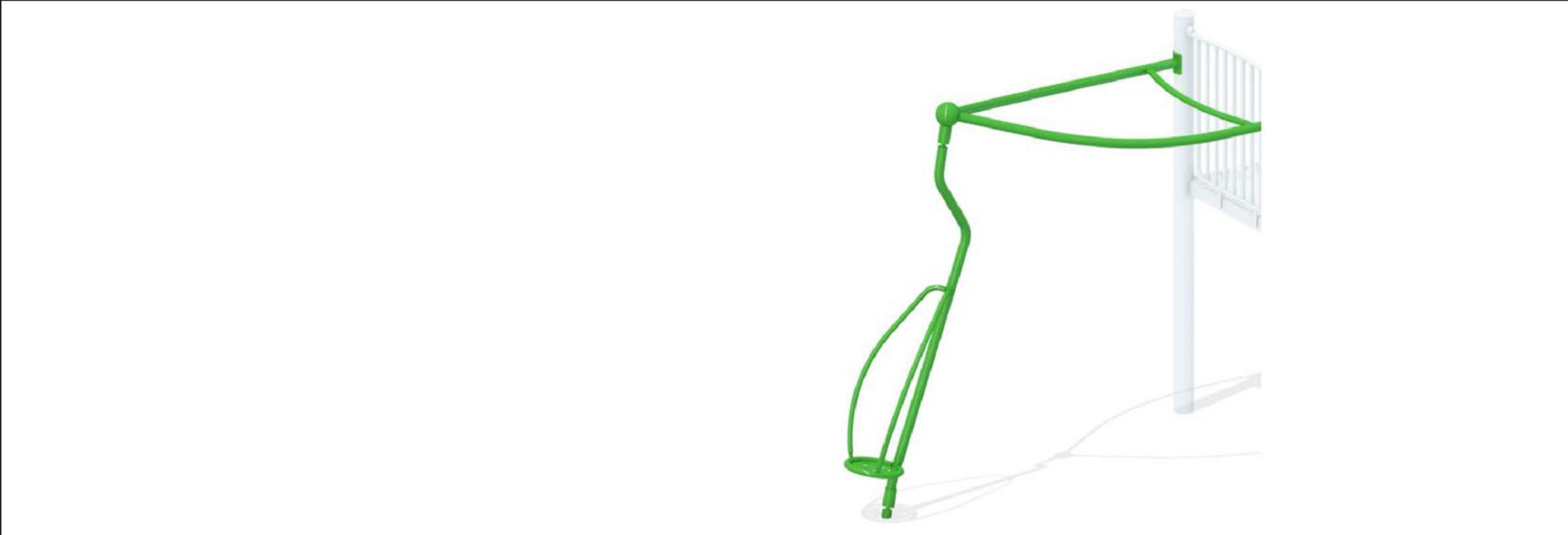
Place a dot on this image

SLIDES



Place a dot on this image

SPINNERS



Place a dot on this image

MONKEY BARS



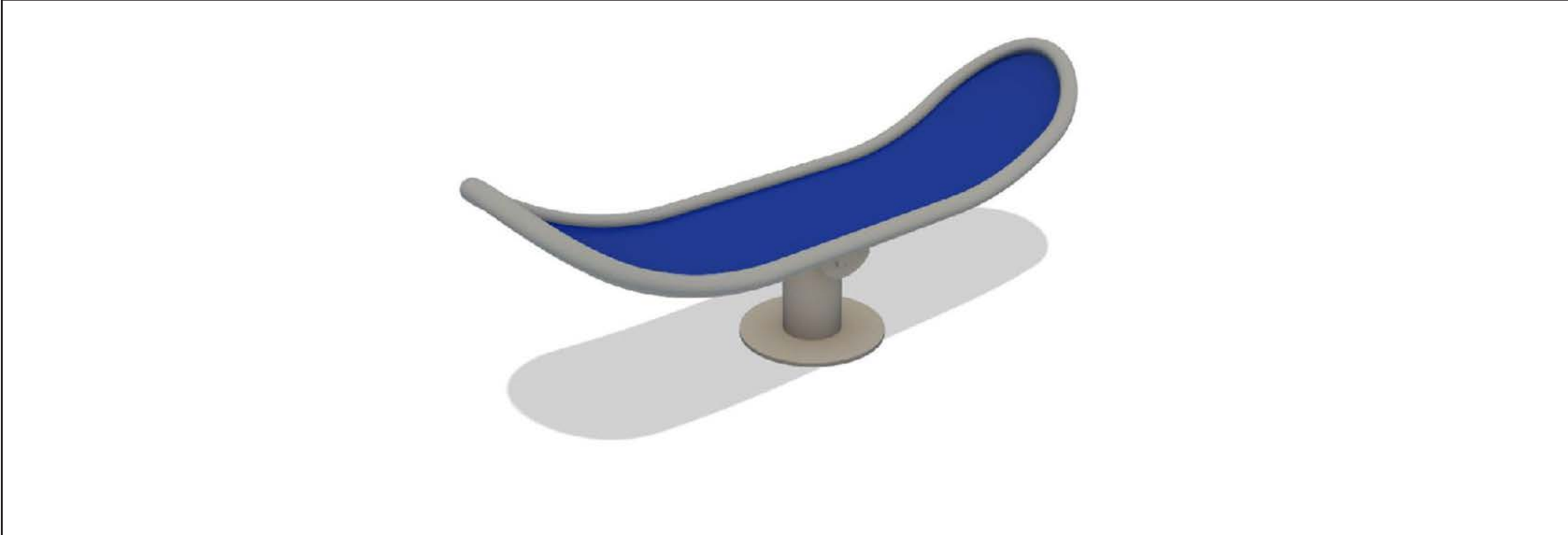
Place a dot on this image

ZIP LINE



Place a dot on this image

BALANCE EQUIPMENT



Place a dot on this image

SPRING RIDERS



Place a dot on this image

CLIMBERS



Place a dot on this image

SWINGS



Place a dot on this image

NORTH COMMONS PARK PLAYGROUND- FEATURES

What kind of features do you want to see in the renovated playground area?

Place up to 4 dots on this board

SOUND & MUSIC



Place a dot on this image

ROLLER & BUMPY SLIDES



Place a dot on this image

GEARS



Place a dot on this image

SCULPTURE & ART



Place a dot on this image

SAND PLAY



Place a dot on this image

LEARNING WALLS



Place a dot on this image

HILLS & MOUNDS



Place a dot on this image

COZY SPACES



Place a dot on this image

WHIMSICAL



Place a dot on this image