




PROJECT
LAUNCH | **GRACO
P A R K**



SNOW
KREILICH
ARCHITECTS





Design Team and Staff Introductions



Minneapolis
Park & Recreation Board



SNOW
KREILICH
ARCHITECTS



aune
fernandez
landscape
architects

Project
Launch | **GRACO
P A R K**



Agenda:

- **Ground Rules**
- **Intros**
- **Project Overview**
- **Discussion**



Minneapolis
Park & Recreation Board



SNOW
KREILICH
ARCHITECTS



Project
Launch | **GRACO
P A R K**

Conversation Ground Rules

1. Stay on “mute” until you are called on the speak
2. Please refrain from side conversations on the chat
3. We are not recording this meeting but all comments and questions will be added to public comment log
4. Any “zoom-bombing” will result in removal from the meeting
5. Share the space and time with others
6. The time will focus on public comment, questions, and concerns





What are the core values of Graco Park & park building? What should it be and what should it not be?



Minneapolis
Park & Recreation Board



SNOW
KREILICH
ARCHITECTS

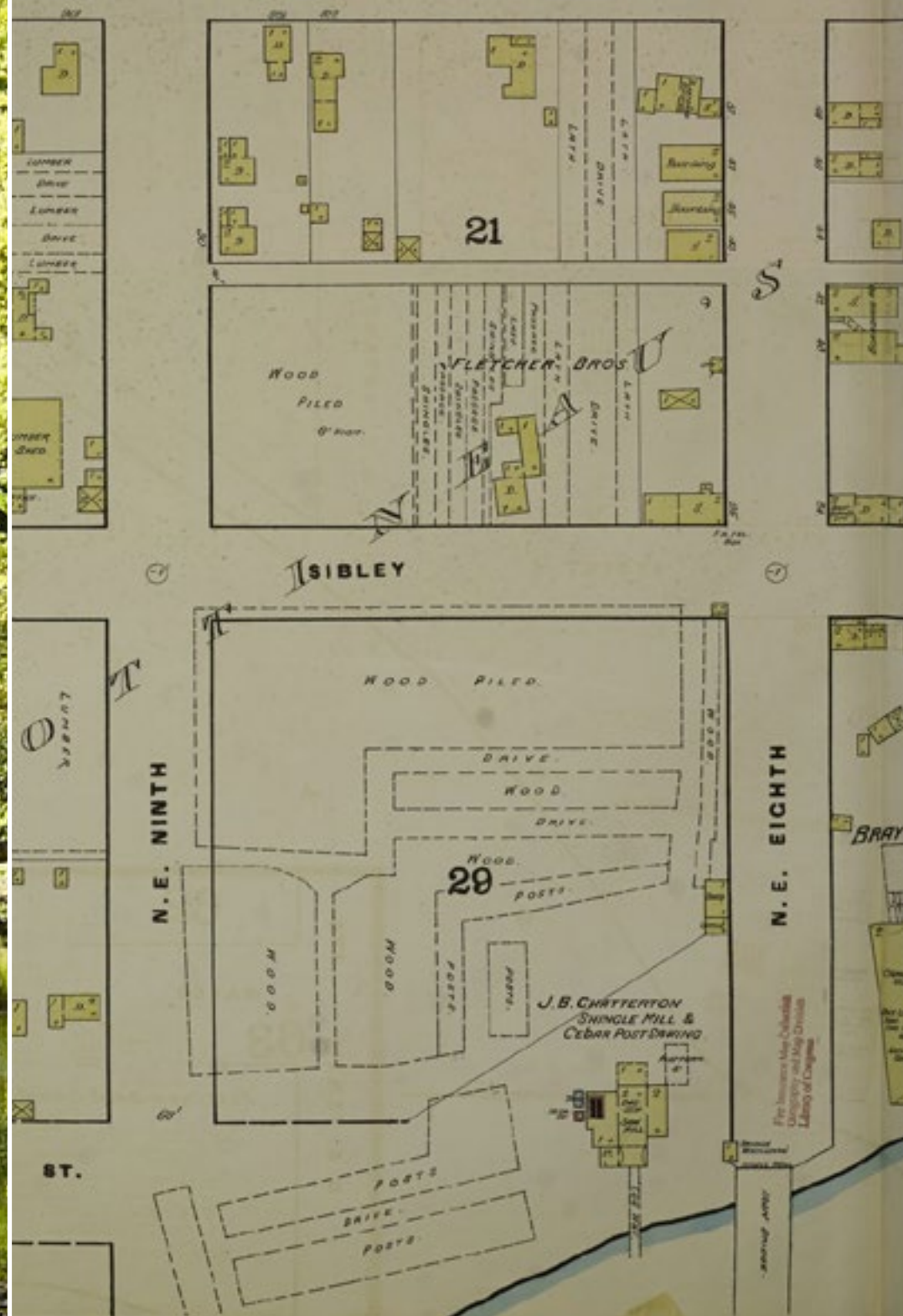


Project
Launch | **GRACO
P A R K**



Pre-1885

Site covered in oak trees and home to the Dakota people



Approx. 1885

Saw milling begins on the site producing shingles & posts



1930 - 2010

Scherer Brothers Lumber occupies the site
(1966 - Hall's Island filled in)

History and Context



Minneapolis
Park & Recreation Board



SNOW
KREILICH
ARCHITECTS



aune fernandez
landscape architects

Project
Launch

GRACO
PARK



2010

MPRB acquires the site & lumber buildings removed



0-5 Year Implementation Plan

5-10 Year Vision



2012

RiverFirst implementation framework completed, including concept design for Graco Park (formerly Scherer Park)



source: Mississippi Watershed Management Organization

2017

Hall's Island reconstructed



Minneapolis
Park & Recreation Board



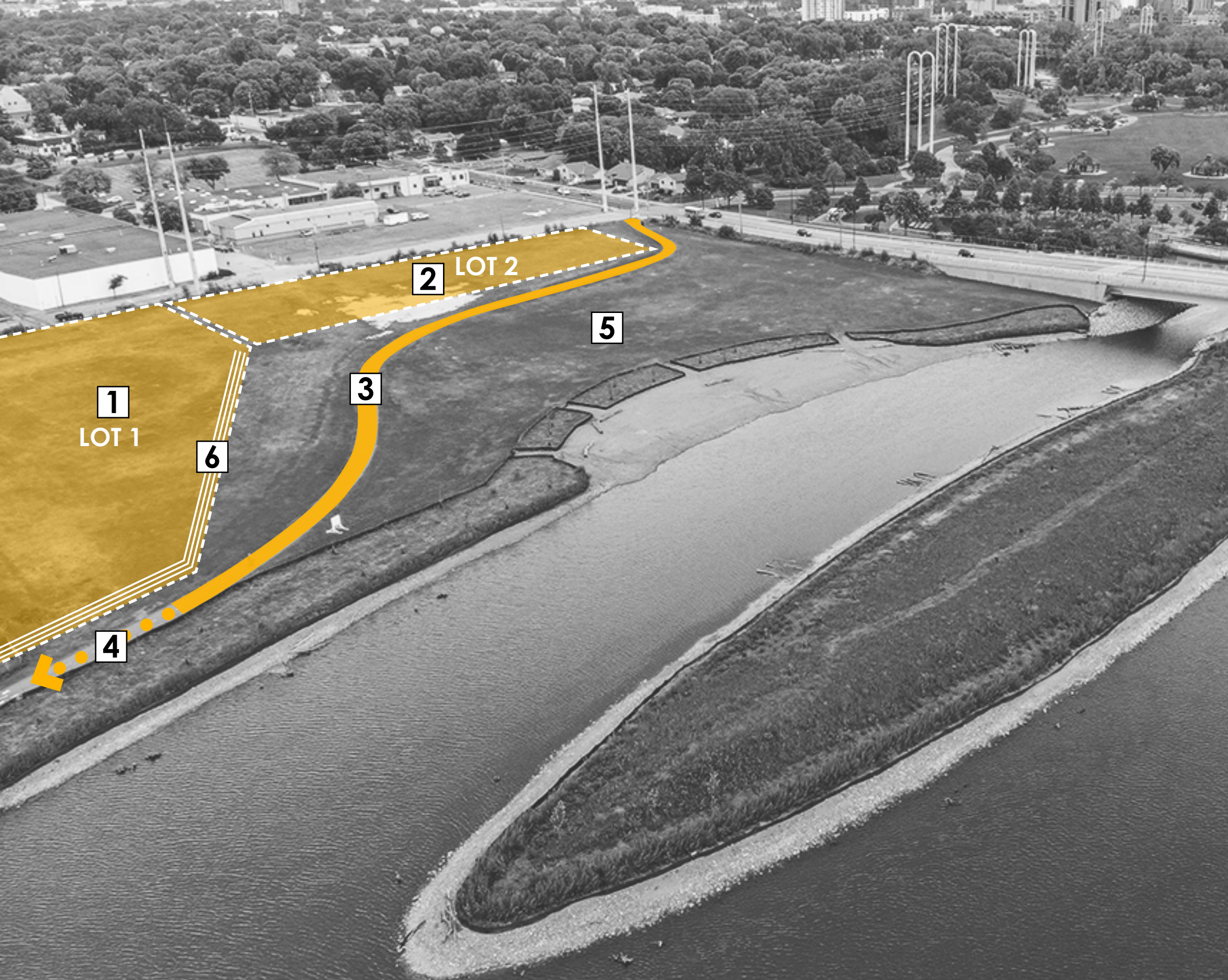
SNOW
KREILICH
ARCHITECTS



aune fernandez
landscape architects

History and Context

Project Launch | **GRACO
PARK**



2018 SETTLEMENT SUMMARY:

1. MPRB has sold a 2.2-acre portion of the 3.55-acre Parcel D located next to Graco's Riverside production facility to Graco at a fair market value of \$1.1 million.

2. While the opportunities for Parcel D have changed, the MPRB remains intent upon developing park supporting uses on the remaining parcel (Lot 2)

3. East Bank Trail

4. Graco gives the trail easement to the MPRB for free

5. Graco Foundation donated over \$3 million toward the new park development

6. At the boundary of Lot 1, Graco will fund a flood barrier/landform

7. Graco Park name



Minneapolis
Park & Recreation Board

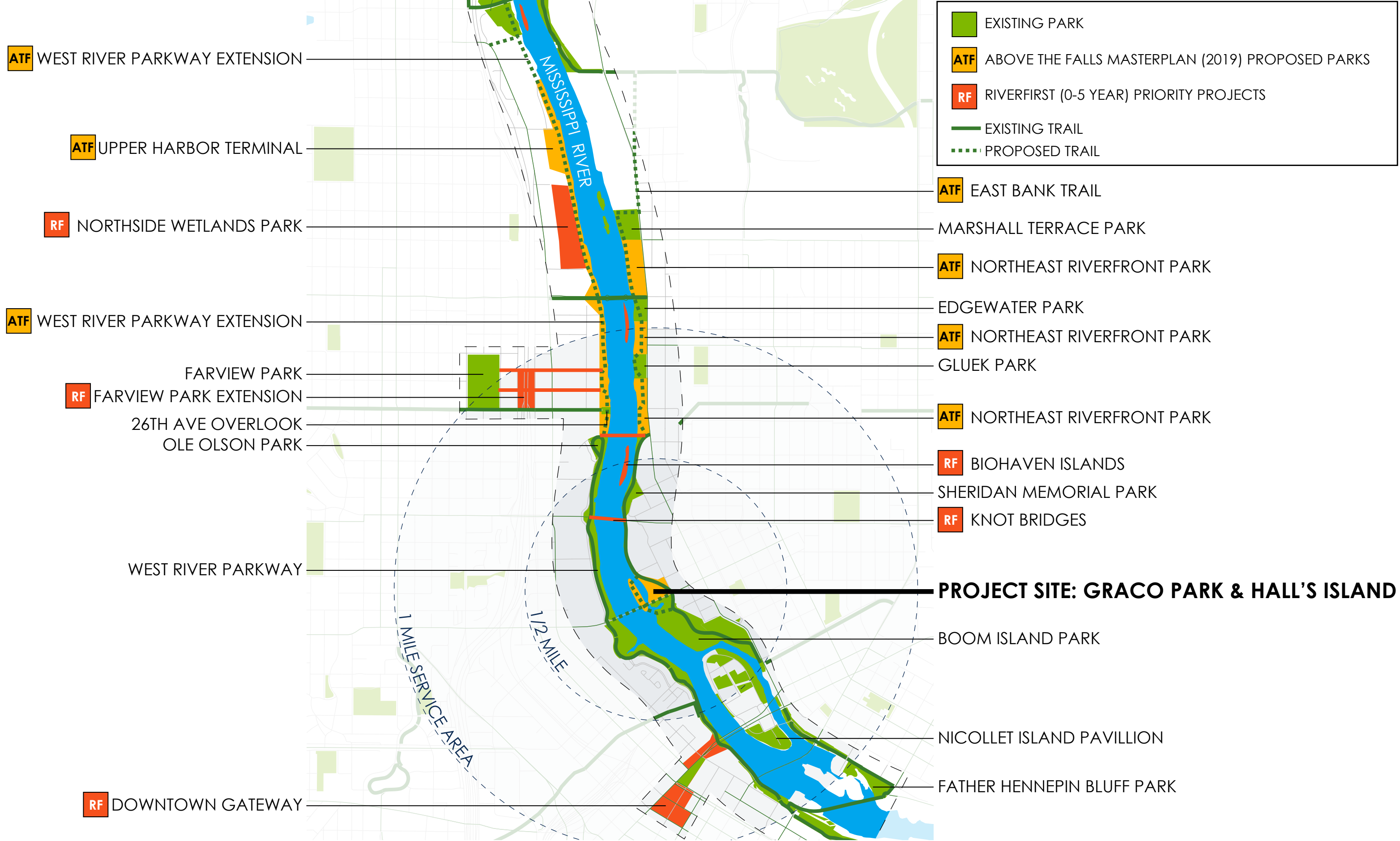


SNOW
KREILICH
ARCHITECTS

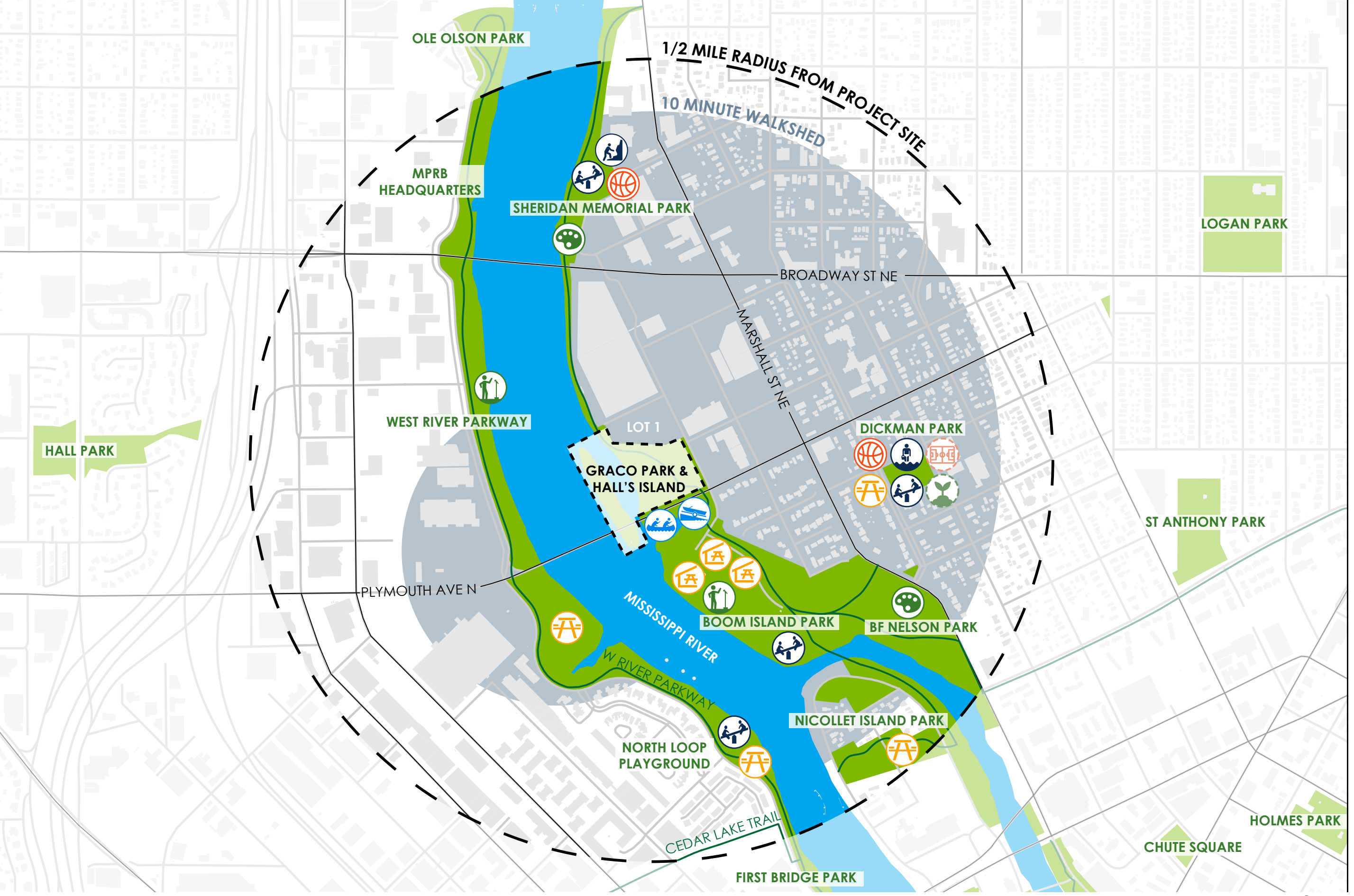


Graco Settlement

Project Launch | **GRACO
P A R K**



RiverFirst & Above The Falls Masterplan Overview



PROGRAM KEY:

- BOAT LAUNCH
- CANOE/KAYAK RACK
- PICNIC TABLES
- PICNIC SHELTER
- PUBLIC ART
- PERFORMANCE/EVENT
- URBAN AGRICULTURE
- BASKETBALL
- MULTI-SPORT COURT
- TRADITIONAL PLAY
- ADVENTURE PLAY
- WADING POOL

- EXISTING PROGRAM
- PROPOSED PROGRAM

Level of Service Map

Considering the programming currently offered in surrounding parks, what services would you like to see in Graco Park?

PROGRAM KEY:

-  BOAT LAUNCH
-  CANOE/KAYAK RACK
-  PICNIC TABLES
-  PICNIC SHELTER
-  PUBLIC ART
-  PERFORMANCE/EVENT
-  URBAN AGRICULTURE
-  BASKETBALL
-  MULTI-SPORT COURT
-  TRADITIONAL PLAY
-  ADVENTURE PLAY
-  WADING POOL
-  EXISTING PROGRAM
-  PROPOSED PROGRAM



Minneapolis
Park & Recreation Board



SNOW
KREILICH
ARCHITECTS



Project Launch | **GRACO
PARK**

KEY PROJECT ELEMENTS

- A. Bridge
- B. Island Access
- C. Landform
- D. Park Program
- E. Vegetation
- F. Trail
- G. Building



Approved Schematic Design (to be updated)



Minneapolis
Park & Recreation Board



SNOW
KREILICH
ARCHITECTS



aune fernandez
landscape architects

Project Launch | **GRACO
PARK**

A. Bridge



B. Island Access



C. Landform



D. Park Program



Project Elements
Project Launch | **GRACO PARK**

E. Vegetation



F. Trail



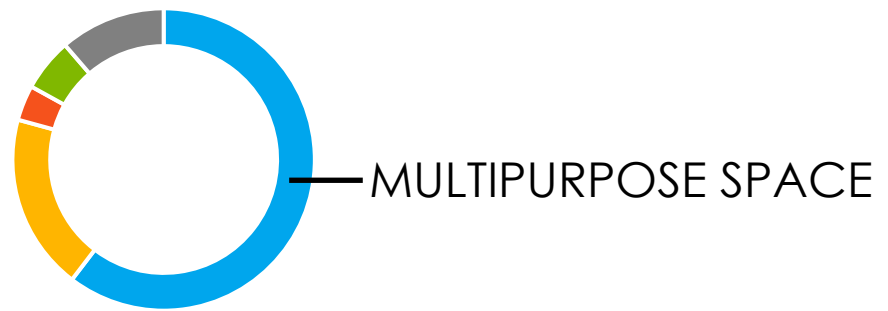
Project Elements

Project Launch | **GRACO PARK**



WORKSHOPS/COMMUNITY EDUCATION

YOGA AND FITNESS CLASSES



SPECIAL OCCASION RENTAL



COMMUNITY MEETINGS



ART EXHIBITIONS



MUSIC PERFORMANCES

Building Program

Project Launch | **GRACO PARK**



OFFICE WORK SPACES



TEAM WORK SPACES



SHARED BREAK AREAS



SHARED SUPPORT SPACES

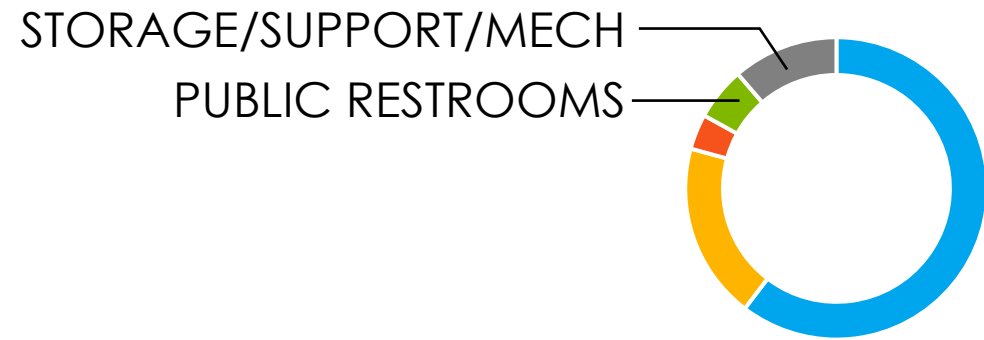


SHARED CONFERENCE ROOMS

Building Program



GENDER SPECIFIC RESTROOMS



FAMILY RESTROOMS



ADA/ASSIST RESTROOMS



PARK BOARD MAINTENANCE STORAGE

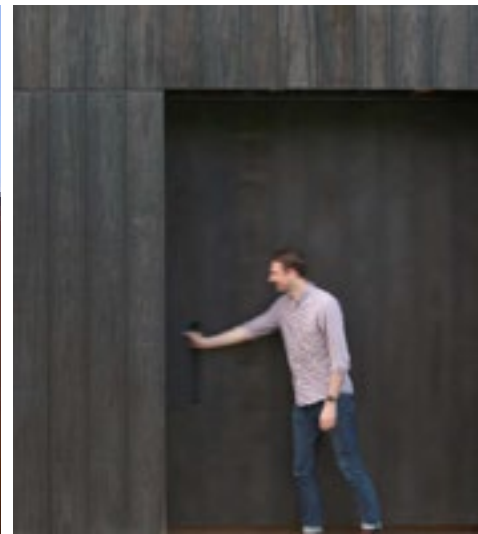
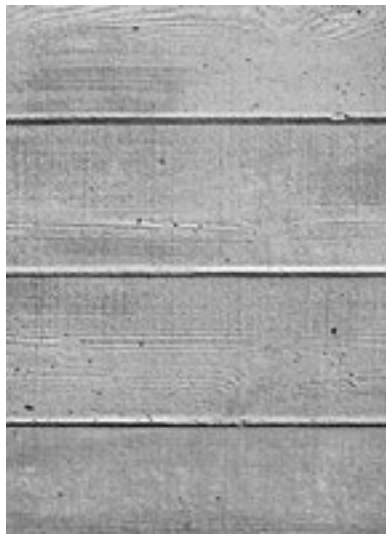


GENDER NEUTRAL RESTROOMS





EXPOSED WOOD STRUCTURE (WOOD OR STEEL)

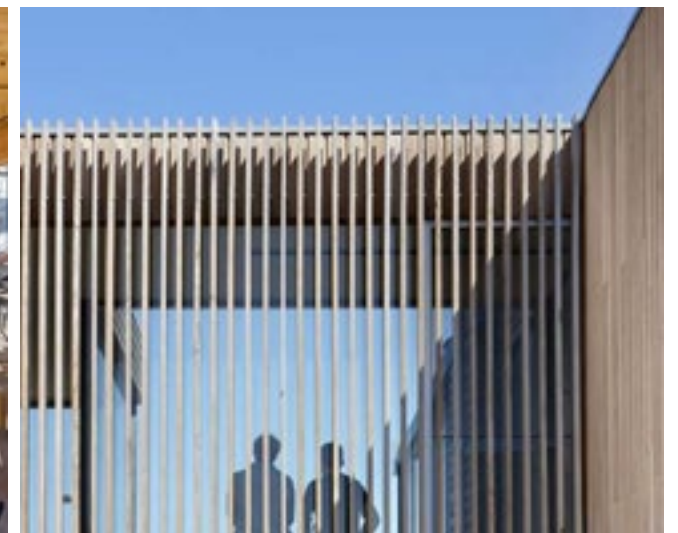


MASONRY

CONCRETE

METAL

THERMALLY MODIFIED WOOD

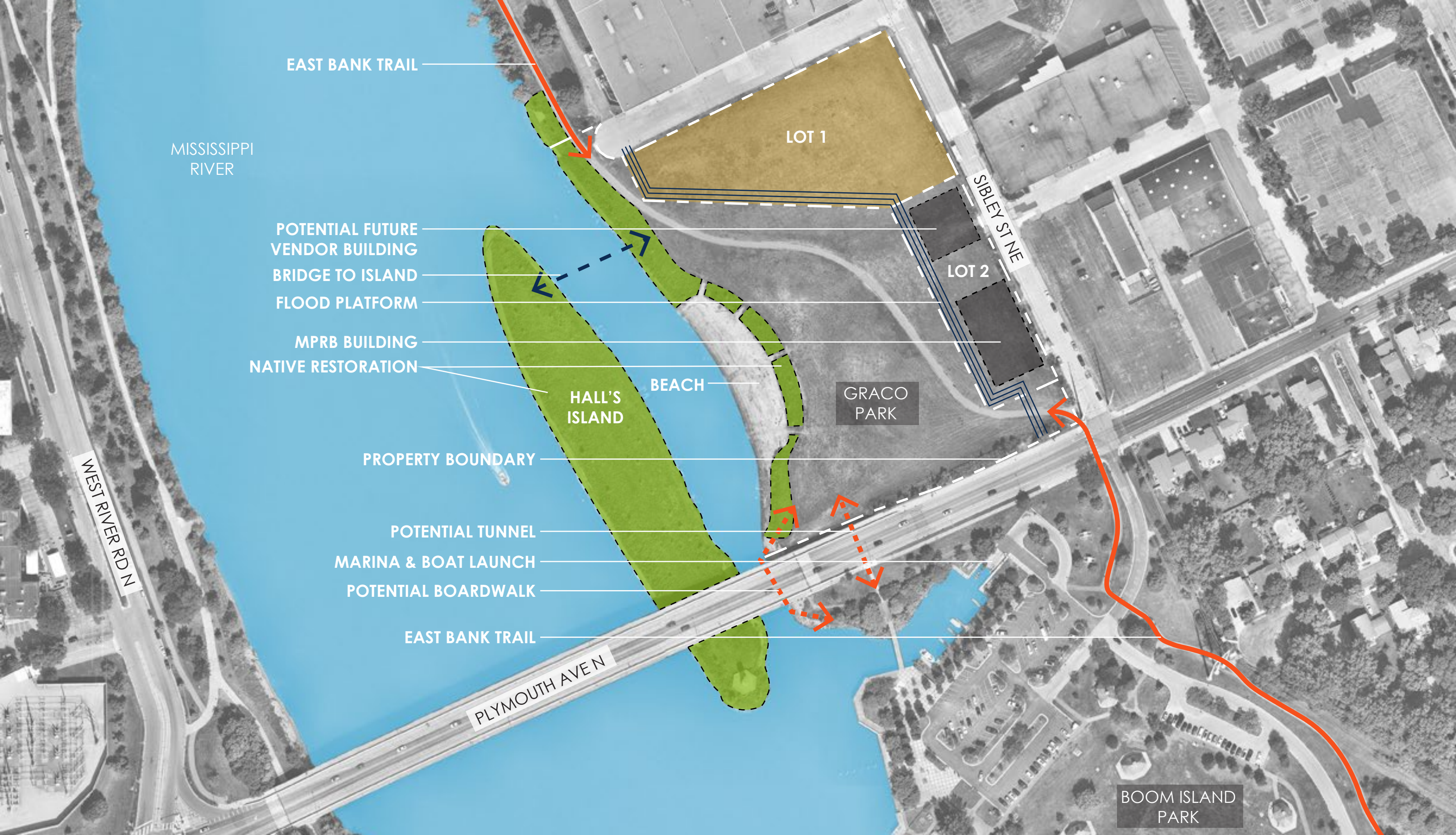


FLOW FROM INDOOR TO OUTDOOR

Building Materials

Project Launch | **GRACO PARK**





EAST BANK TRAIL

MISSISSIPPI
RIVER

POTENTIAL FUTURE
VENDOR BUILDING

BRIDGE TO ISLAND

FLOOD PLATFORM

MPRB BUILDING

NATIVE RESTORATION

HALL'S
ISLAND

BEACH

LOT 1

LOT 2

SIBLEY ST NE

GRACO
PARK

PROPERTY BOUNDARY

POTENTIAL TUNNEL

MARINA & BOAT LAUNCH

POTENTIAL BOARDWALK

EAST BANK TRAIL

PLYMOUTH AVENUE

WEST RIVER RD N

BOOM ISLAND
PARK

Site and Ecological Context

MPRB is working to find tenants for these buildings:

MPRB building tenant criteria:

- Connections to park
- Connections to community
- Interest in activating the space
- Other

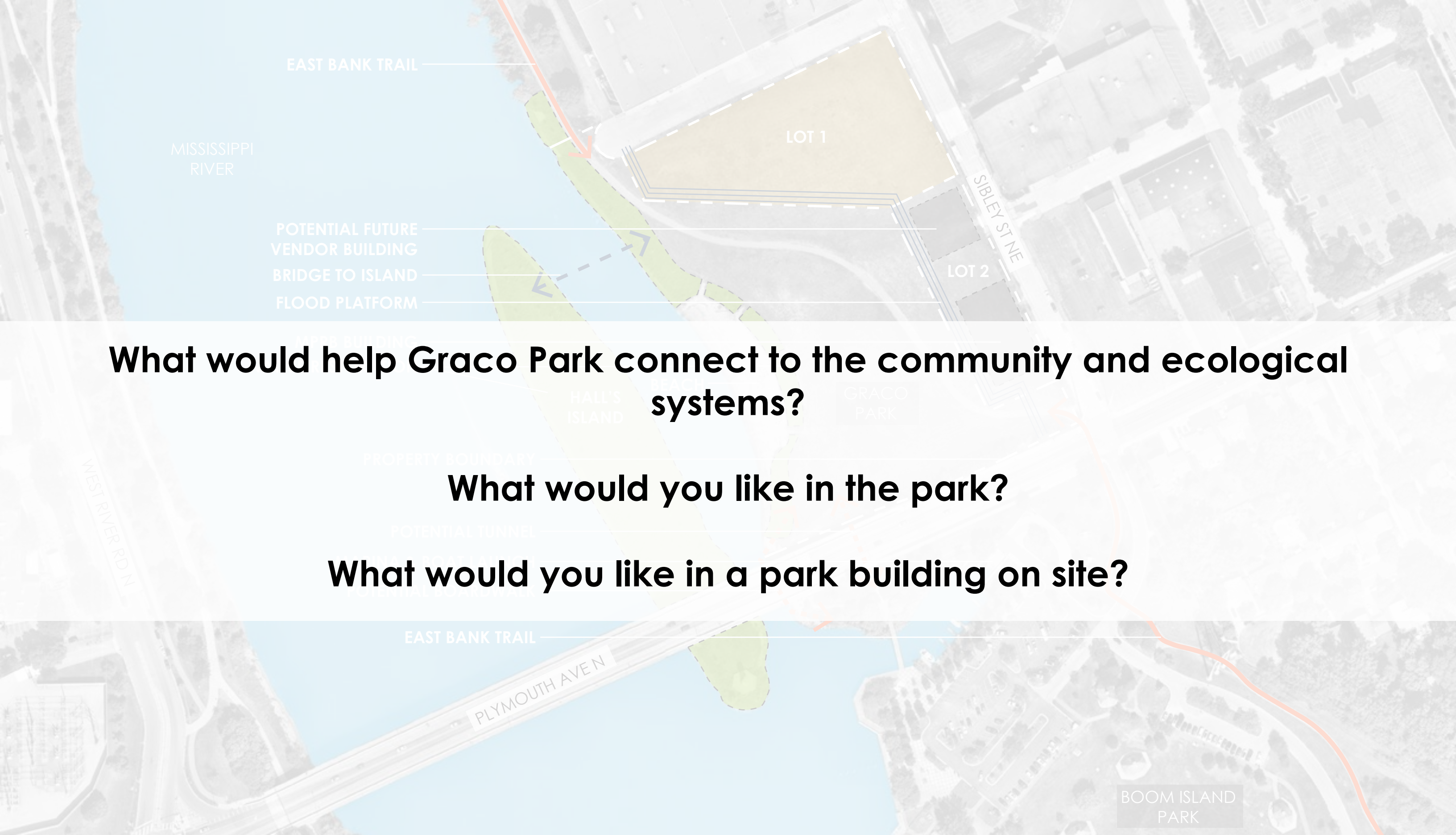
Vendor building tenant criteria:

- Connections to community
- Revenue to support operations
- Further activation of the park
- Other

If you are interested in being a tenant in either building, please contact the MPRB for more information or to submit a letter of interest due July 23rd.



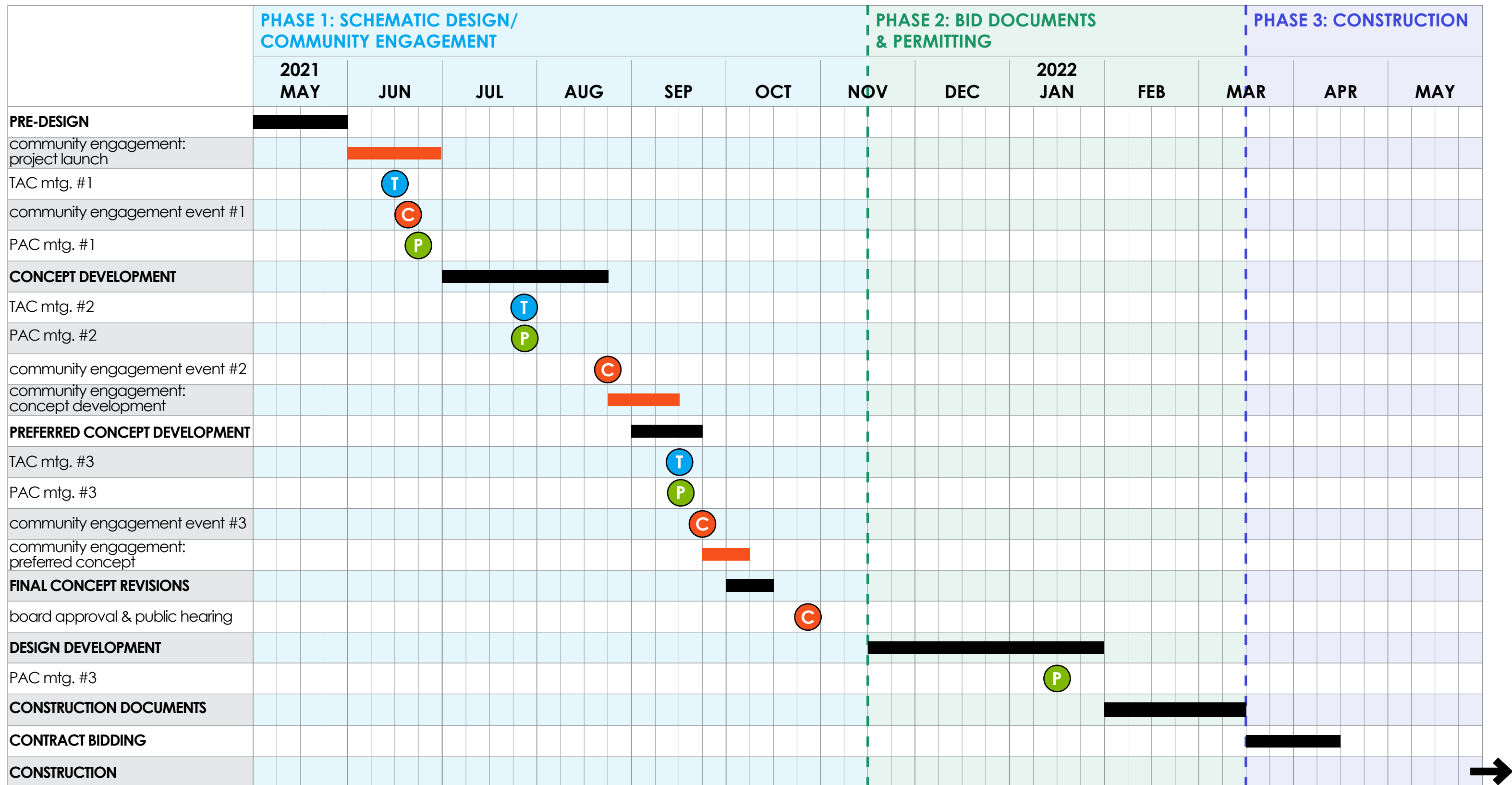
Potential Tenants - Letter of Interest



What would help Graco Park connect to the community and ecological systems?

What would you like in the park?

What would you like in a park building on site?



note: this schedule is for informational purposes only and is subject to change

ANTICIPATED CONSTRUCTION:
JUNE-NOVEMBER 2022

[C] community engagement event [P] project advisory committee (PAC) meeting [T] technical advisory committee (TAC) meeting

MPRB project contact:

Carrie Christensen

Senior Planner

(612) 230-6540

CChristensen@minneapolisparcs.org

webpage for submitting comments:

<https://aflandarc.com/graco-park-community-engagement-1>

MPRB Graco Park informational webpage:

https://www.minneapolisparcs.org/park_care__improvements/park_projects/current_projects/scherer_bros_site_-_parcel_d_development/