



Minneapolis
Park & Recreation Board

Cedar-Isles Open House

*Encroachments & How They
Overlap with Master Plans*

Tuesday, February 16th, 2021





Land Acknowledgement

We collectively acknowledge that the Minneapolis Park and Recreation Board system is located on the traditional, ancestral, and contemporary lands of Indigenous people. This land holds great historical, spiritual, and personal significance for its original stewards, the Native nations and peoples of this region.

We also acknowledge that restrictive covenants were used to deny Black, Indigenous, Asian and in some cases Jewish individuals access to property in surrounding neighborhoods. This had an impact on who was and was not officially welcome in this area.

Illustrations by Marlena Myles



Agenda

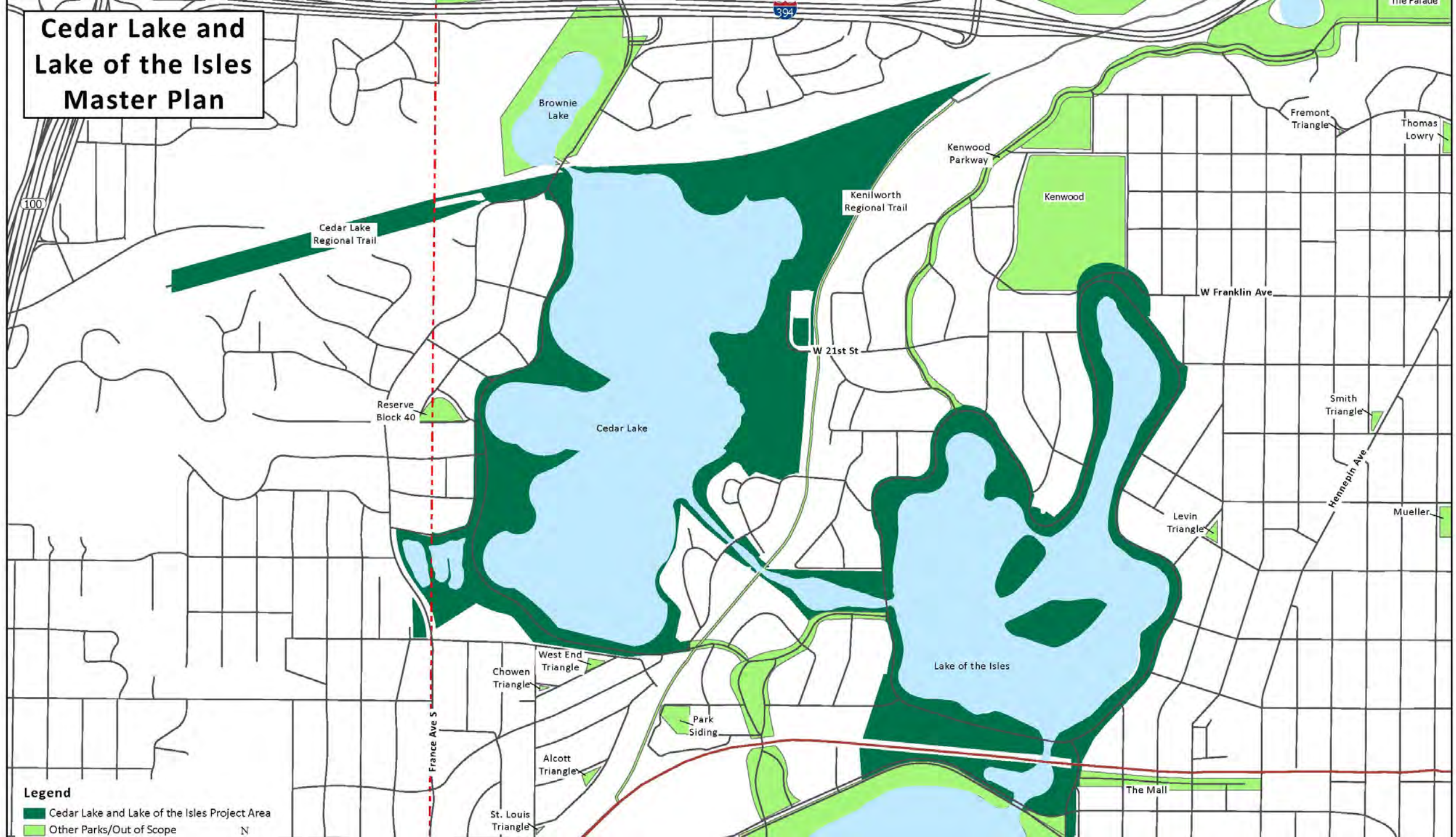
6:00-6:25pm Welcome & Staff Presentation

6:25-7:00pm Q&A with Public

MPRB Online Forum Guidelines

1. We aim to have one conversation
2. Public will be provided the ability to ask questions through the chatbox and verbally during Q&A
3. Stay on "mute" until you are called on to speak
4. We are not recording this meeting

Cedar Lake and Lake of the Isles Master Plan



Definition of Encroachment for MPRB

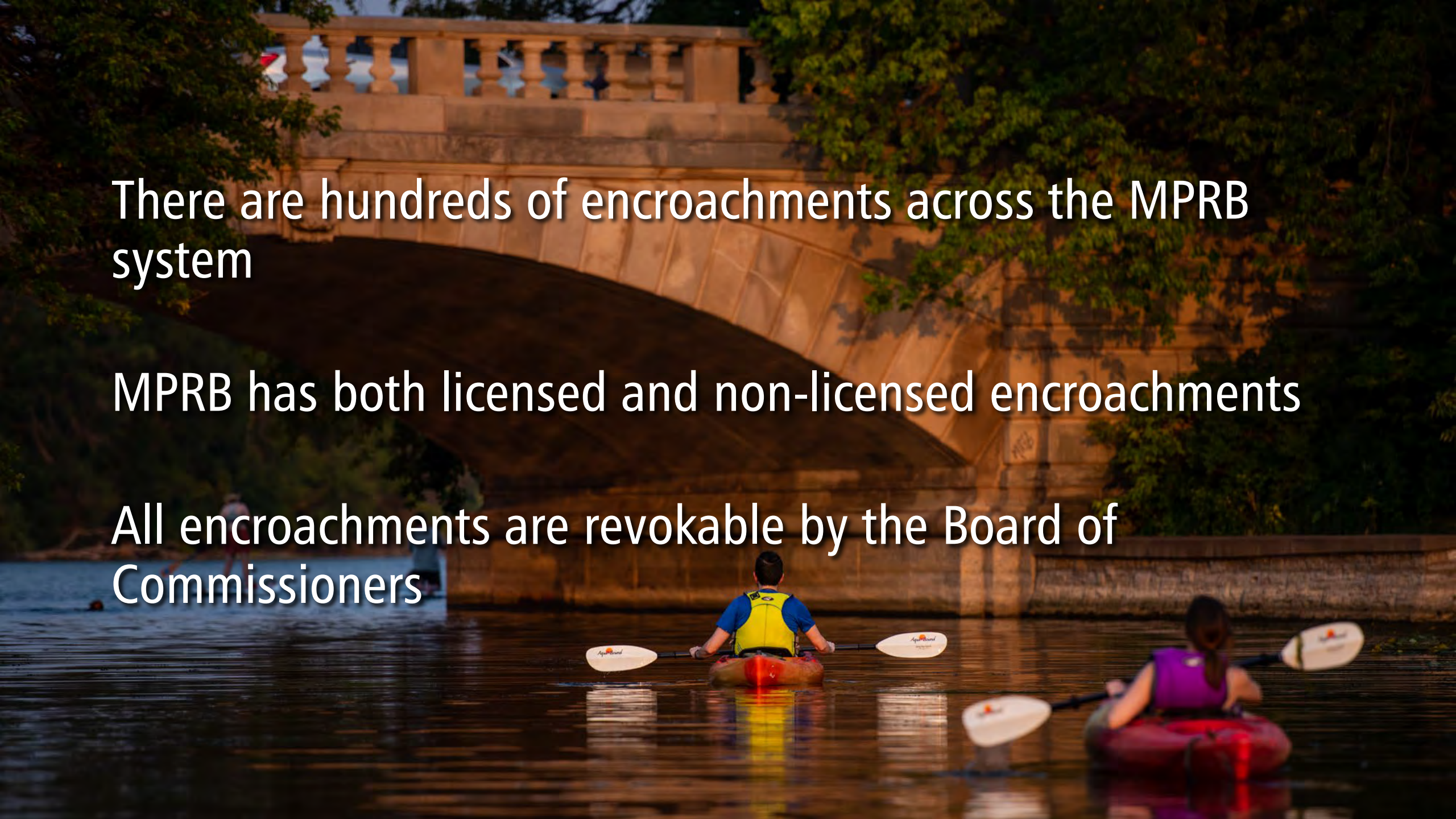
The private use of public MPRB land.



There are hundreds of encroachments across the MPRB system

MPRB has both licensed and non-licensed encroachments

All encroachments are revokable by the Board of Commissioners



When does MPRB proactively address encroachments?

- When constructing MPRB park land improvements (ex: Kenilworth Channel)
- When MPRB learns of a private land owner is making a substantial modifications to their current encroachment land - they are required to get approval from the Board (ex: very common along parkways)

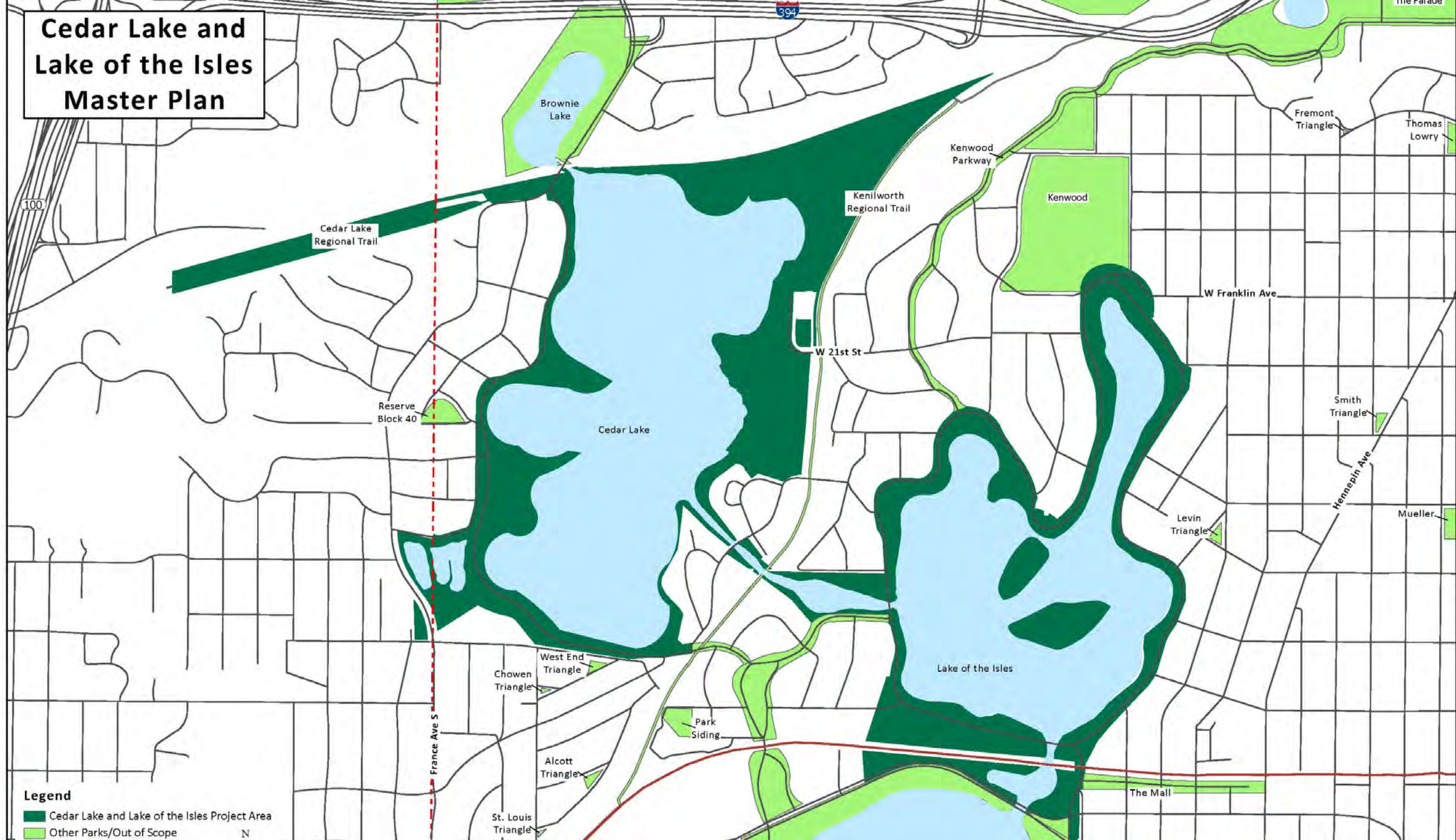


Four types of encroachments on MPRB land

- Parkway-adjacent — ex: driveway access, retaining wall
- Park-adjacent — ex: fence, garden bed
- Water-adjacent > 100 feet — ex: Minnehaha Creek
- Water-adjacent < 100 feet — ex: Kenilworth Channel, shoreline of East Cedar Lake, Diamond Lake



Cedar Lake and Lake of the Isles Master Plan

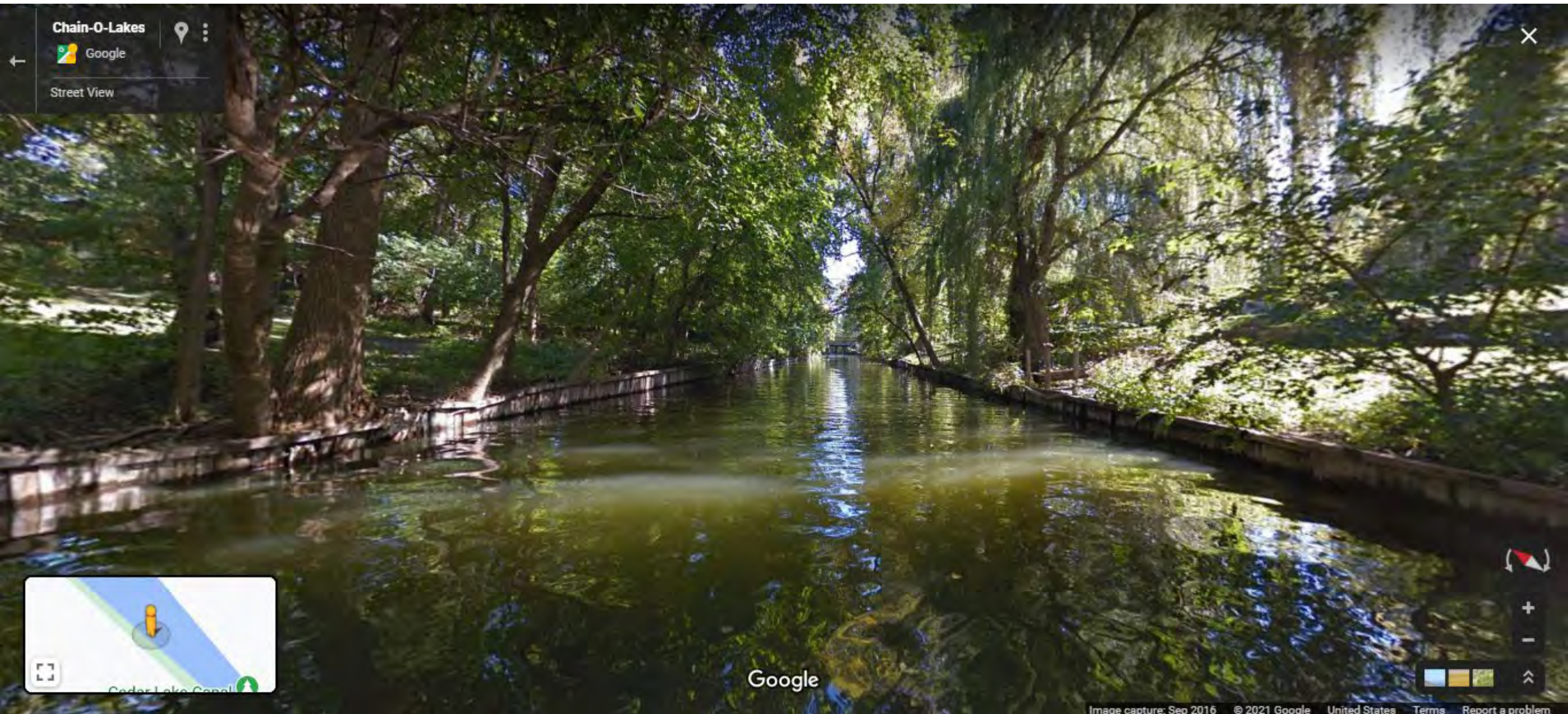




Disclaimer: this image does not show a specific encroachment, it is an example meant to show the general park land boundary for Lake of the Isles Parkway



Disclaimer: this image does not show a specific encroachment, it is an example meant to show the general park land boundary for Cedar Lake Parkway



Disclaimer: this image does not show a specific encroachment, it is an example that shows the general park land boundary for the Kenilworth Channel



Disclaimer: this image does not show a specific encroachment, it is an example meant to show the general park land boundary for Cedar Lake

Encroachments along eastern shore of Cedar Lake and the Kenilworth Channel

1. The Park Board owns all of the shoreline along the lake and channel
2. Width of ownership varies significantly around the lake and the channel
3. The majority of these encroachments are licensed and have been in place for 50+ years
4. The Board can revoke these licenses at any time



What happens if a master plan is adopted by the Board of Commissioners that impacts or overlaps with an encroachment?

- Would not address encroachments unless or until there is funding to make improvements that impact that specific encroachment
- Would work with homeowner to modify or revoke at that time

****the Board of Commissioners may revoke encroachments at any time**

A serene sunset scene over a body of water. The sky is filled with dark, silhouetted clouds, and the sun is a bright orange glow on the horizon. The water in the foreground is dark with gentle ripples, reflecting the light from the sky. In the background, a dark line of trees and foliage is visible against the horizon. The text "Q&A with public" is centered in the middle of the image in a white, sans-serif font.

Q&A with public

How to ask your question

Share your feedback verbally:

- To let staff know you would like to speak, write "YES" in the chatbox

Share your feedback through writing:

- Write your feedback in the chatbox



THANK YOU for participating!

Questions or comments?

Emma Pachuta, Senior Planner

612-499-3711

epachuta@minneapolisparks.org

Find more project information at

www.minneapolisparks.org/cedar-isles