

An aerial photograph of Bde Maka Ska lake in Minneapolis. The lake is dark blue with several large rocks visible in the water. A paved path runs along the shoreline, and a bridge crosses the lake in the background. The surrounding area includes various buildings, trees, and a parking lot.

Bde Maka Ska Refectory Rebuild:

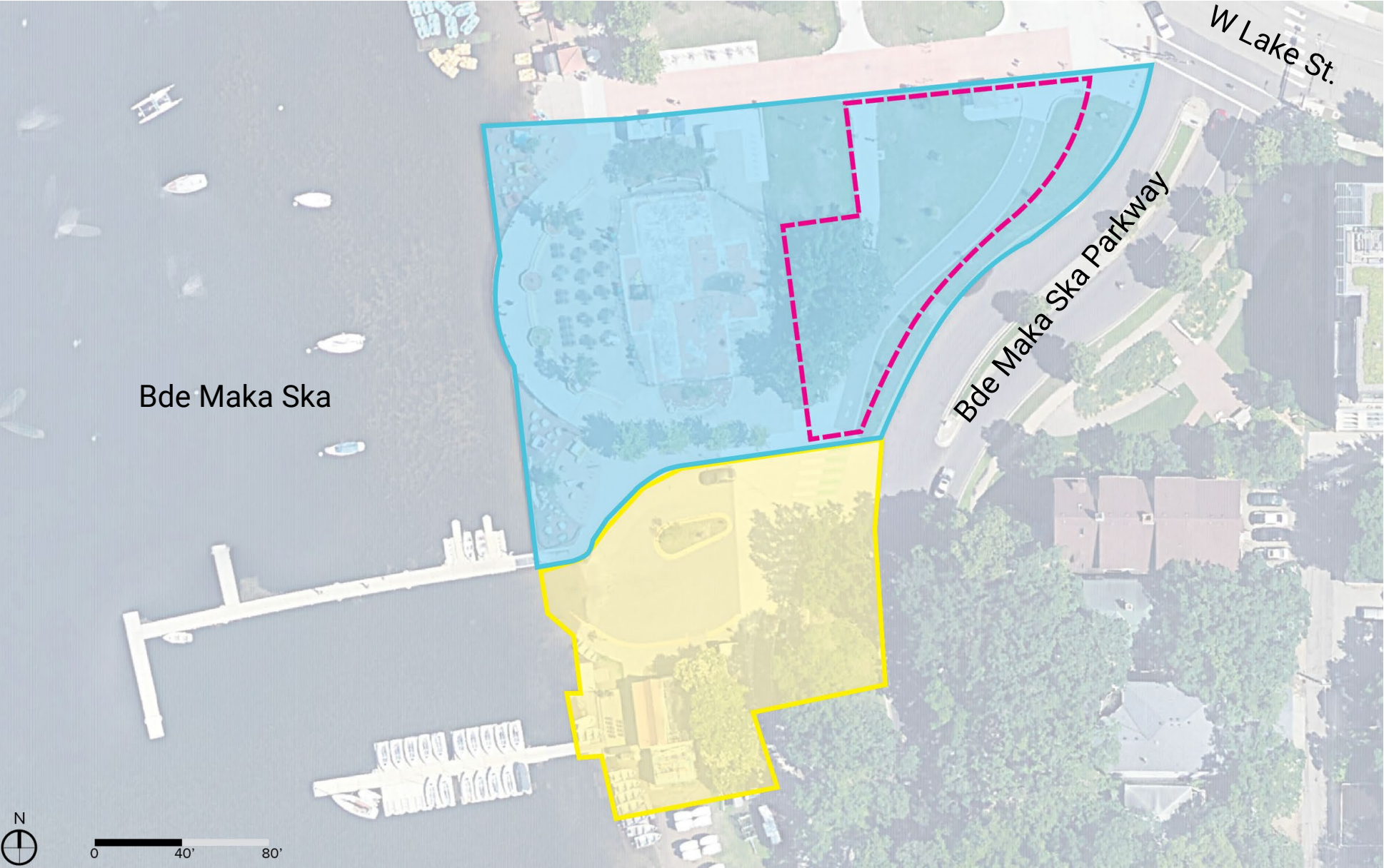
Draft Vision, Guiding Principles, and Concepts




March 2021

Project Website: www.minneapolisiparks.org/bmsrebuild

Project Survey: www.surveymonkey.com/r/bmsrebuild

Project Area



-  Project Area through Implementation
Approximately: 0.92 Ac
-  Assumed minimal disturbance area
through implementation
-  Additional area for conceptual design
phase purpose only. Not included
through implementation

Bde Maka Ska Refectory Rebuild

MPRB Bde Maka Ska/Lake Harriet Master Plan



Bde Maka Ska Refectory Rebuild



Bde Maka Ska/Lake Harriet Master Plan Recommendations

Equity Recommendations:

- Include universal icons in wayfinding and interpretive signage to improve the experience of park users. Where appropriate, signs may be multi-lingual, including Dakota and Ojibwe. As part of the theme of story awakening, look for opportunities to share diverse narratives in additional languages as well as English.
- Where appropriate, include diverse community perspectives in crafting and displaying the content of storytelling and historic and cultural interpretation.
- Design decisions implemented within the master plan shall address equity for all users and will be evaluated using racial equity principles.

Historical and Cultural Resources Recommendations:

- Reveal and interpret the natural and human history of the lakes. Expand interpretive programming around the lakes regarding Native American use and history of the area.

Natural Resources Recommendations:

- Consider stormwater management in all new development and redevelopment in the Chain of Lakes, including use of Best Management Practices to reduce runoff and retain and treat stormwater, and green infrastructure solutions where feasible and in harmony with other park uses.

Recreation, Events and Enterprise Recommendations:

- Expand winter programming and recreational opportunities.
- Add comfort facilities around the lakes for park users including restrooms, changing facilities at beaches, bicycle parking, more benches, and other flexible seating. In picnic areas, provide movable tables, additional grills, and adjacent un-programmed open space to accommodate larger and more culturally diverse gatherings.

Draft Vision and Guiding Principles

PROJECT VISION

Using the community visioning and planning of the Bde Maka Ska-Harriet Master Plan as a guide, this project seeks to rebuild the historic Refectory building and adjacent shoreline site to elevate the site's rich history and cultural significance; support the contemporary communities' interests and well-being; and to be a steward to this unique landscape. Above all, the design of this site seeks to be inclusive to all and to celebrate the diversity of lived experiences of this place.



BDE MAKA SKA REFECTORY REBUILD GUIDING PRINCIPLES



REVEAL THE LEGACY

Provide space for performance, storytelling, art and interpretation focused on revealing the untold stories of this site's cultural history and connecting to the current and future cultural landscape of the region.



SUPPORT LOCAL ECONOMIES

Provide economic opportunity for Black, Indigenous and People of Color communities.



HONOR LAND AND WATER

Protect Mature Vegetation. Support the health of the lake and promote native plant species throughout the site.



FOSTER HUMAN CONNECTION

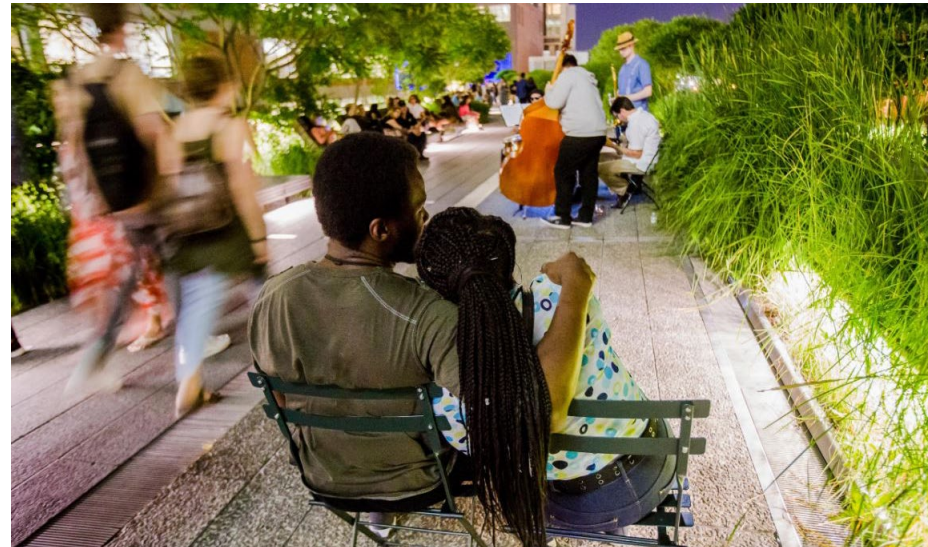
Enhance the user experience by designing for physical, mental, and emotional well-being. Provide the opportunity for people to connect with nature and one another.

Guiding Principles for Refectory Site



REVEAL THE LEGACY

Provide space for performance, storytelling, art and interpretation focused on revealing the untold stories of this site's cultural history and connecting to the current and future cultural landscape of the region.



Guiding Principles for Refectory Site



SUPPORT LOCAL ECONOMIES

Provide economic opportunity for Black, Indigenous and People of Color communities.



Guiding Principles for Refectory Site



HONOR LAND AND WATER

Protect Mature Vegetation. Support the health of the lake and promote native plant species throughout the site.



Guiding Principles for Refectory Site



FOSTER HUMAN CONNECTION

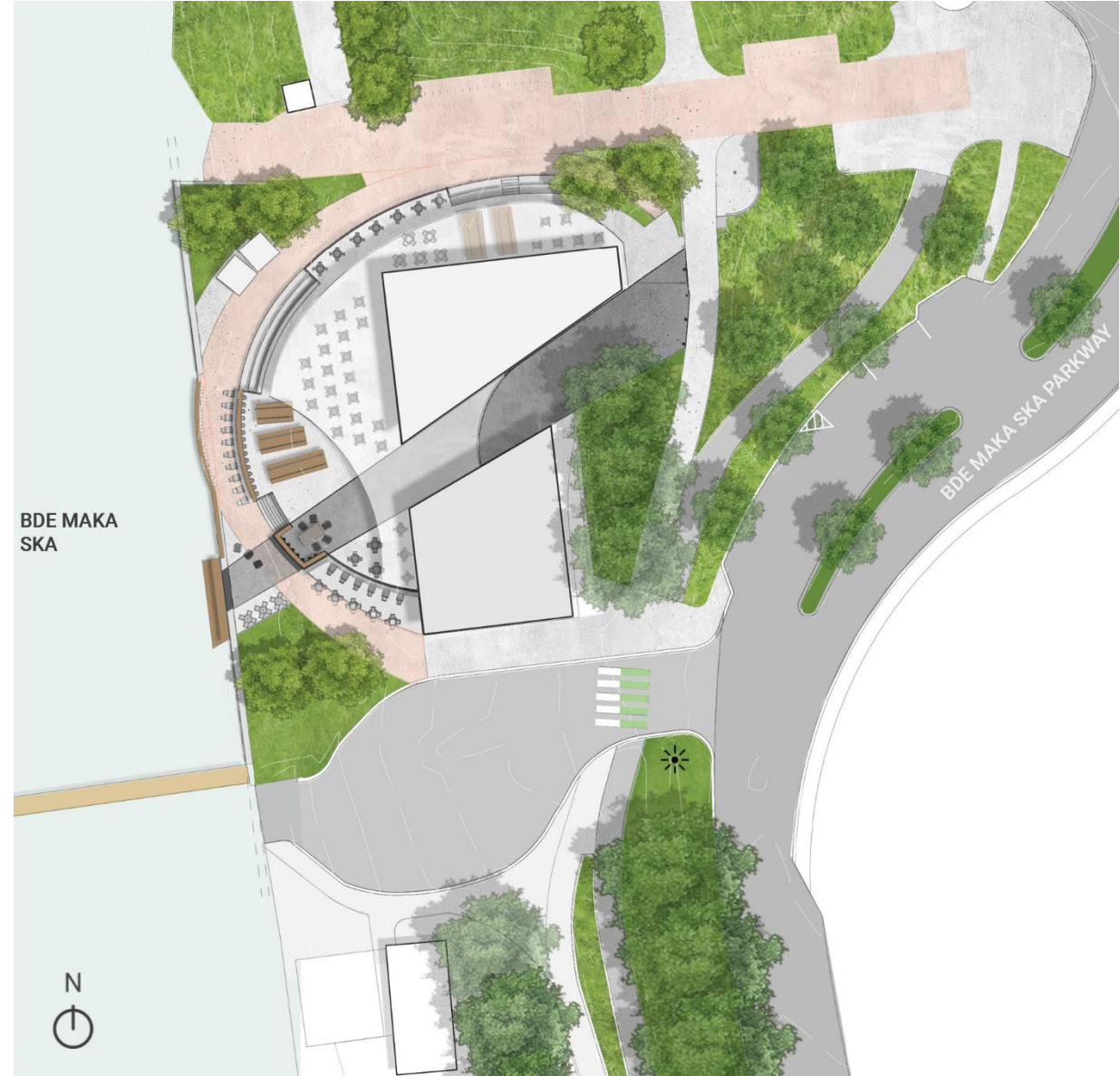
Enhance the user experience by designing for physical, mental, and emotional well-being. Provide the opportunity for people to connect with nature and one another.



Concept A



Concept B



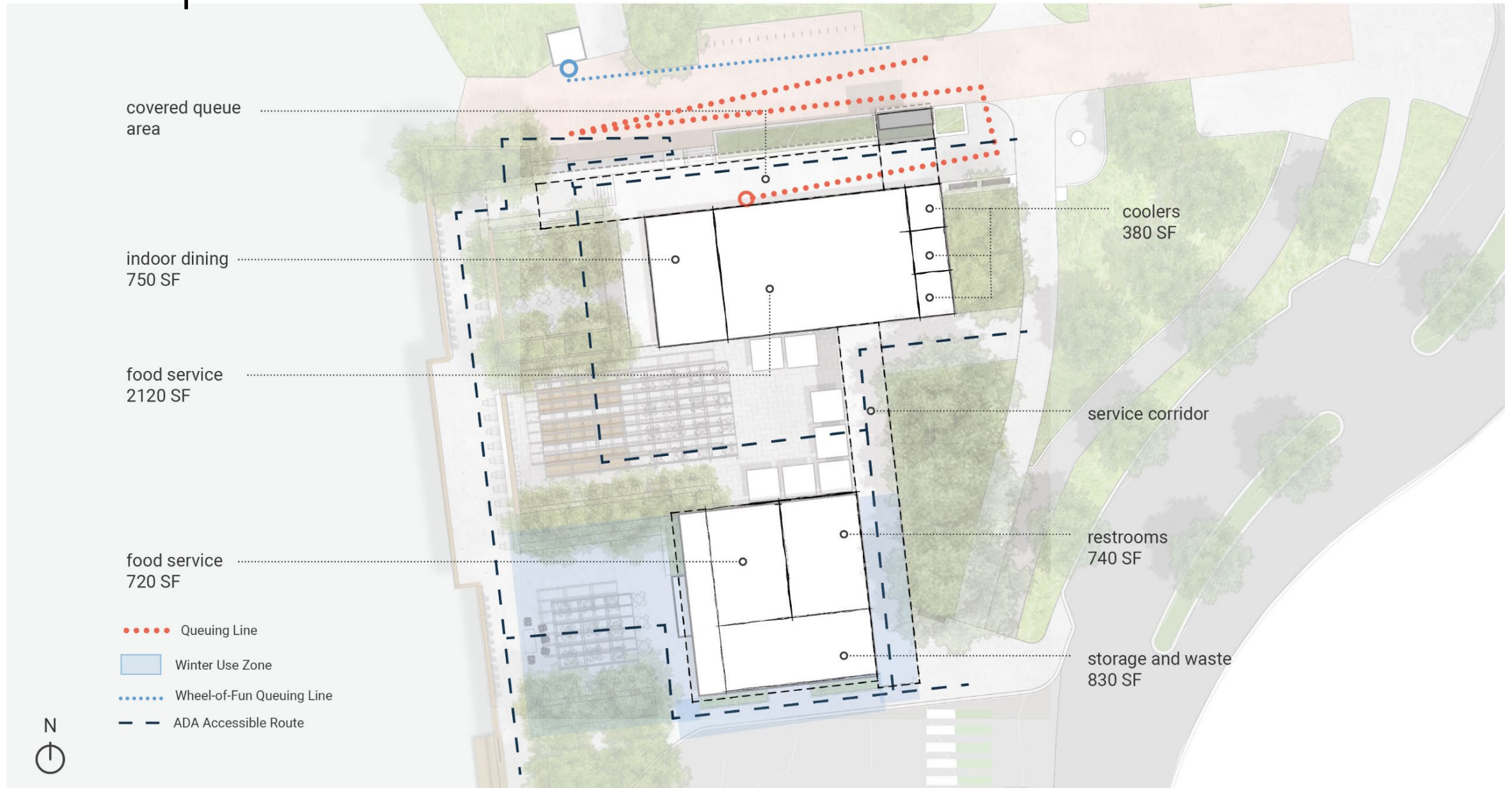
Concept A



Concept A



Concept A



Concept A – View from the Lake



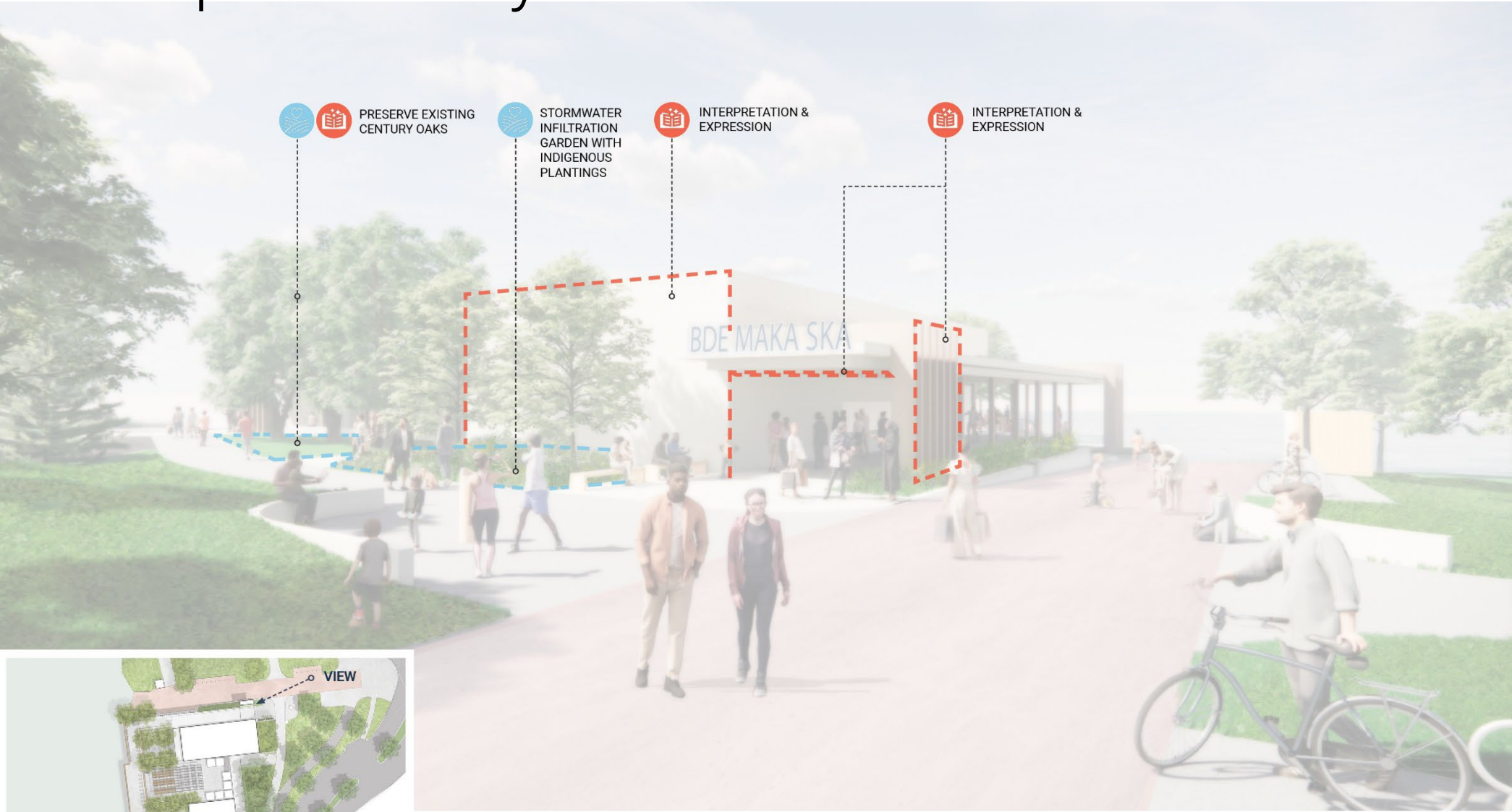
Bde Maka Ska Refectory Rebuild

Concept A - Entry View



Bde Maka Ska Refectory Rebuild

Concept A - Entry View



Bde Maka Ska Refectory Rebuild



REVEAL THE LEGACY



SUPPORT LOCAL ECONOMIES



HONOR THE LAND AND THE WATER



FOSTER HUMAN CONNECTION



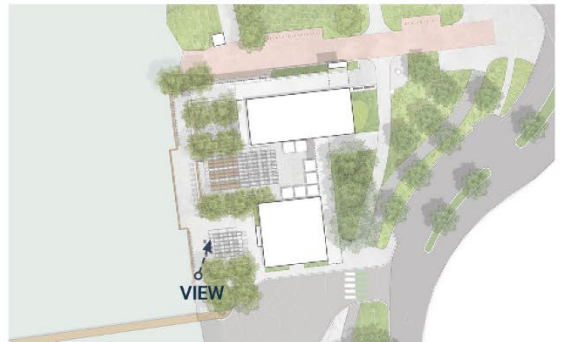
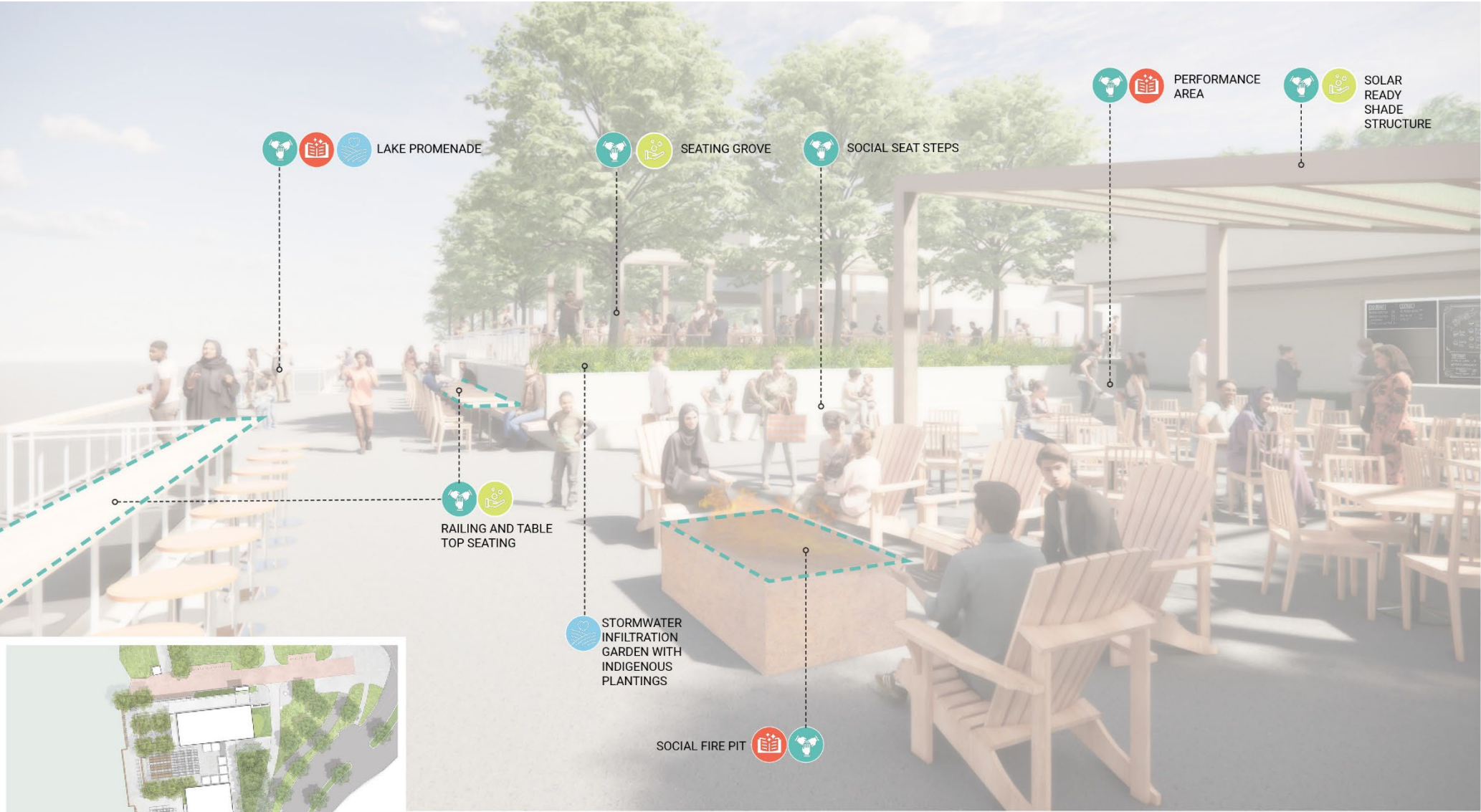
Minneapolis
Park & Recreation Board

Concept A – Lower Deck



Bde Maka Ska Refectory Rebuild

Concept A – Lower Deck



Bde Maka Ska Refectory Rebuild



REVEAL THE LEGACY



SUPPORT LOCAL ECONOMIES



HONOR THE LAND AND THE WATER



FOSTER HUMAN CONNECTION

Concept A – Lower Deck Winter View



Bde Maka Ska Refectory Rebuild

Concept A – Lake Promenade



Bde Maka Ska Refectory Rebuild

Concept A – Lake Promenade



 REVEAL THE LEGACY

 SUPPORT LOCAL ECONOMIES

 HONOR THE LAND AND THE WATER

 FOSTER HUMAN CONNECTION

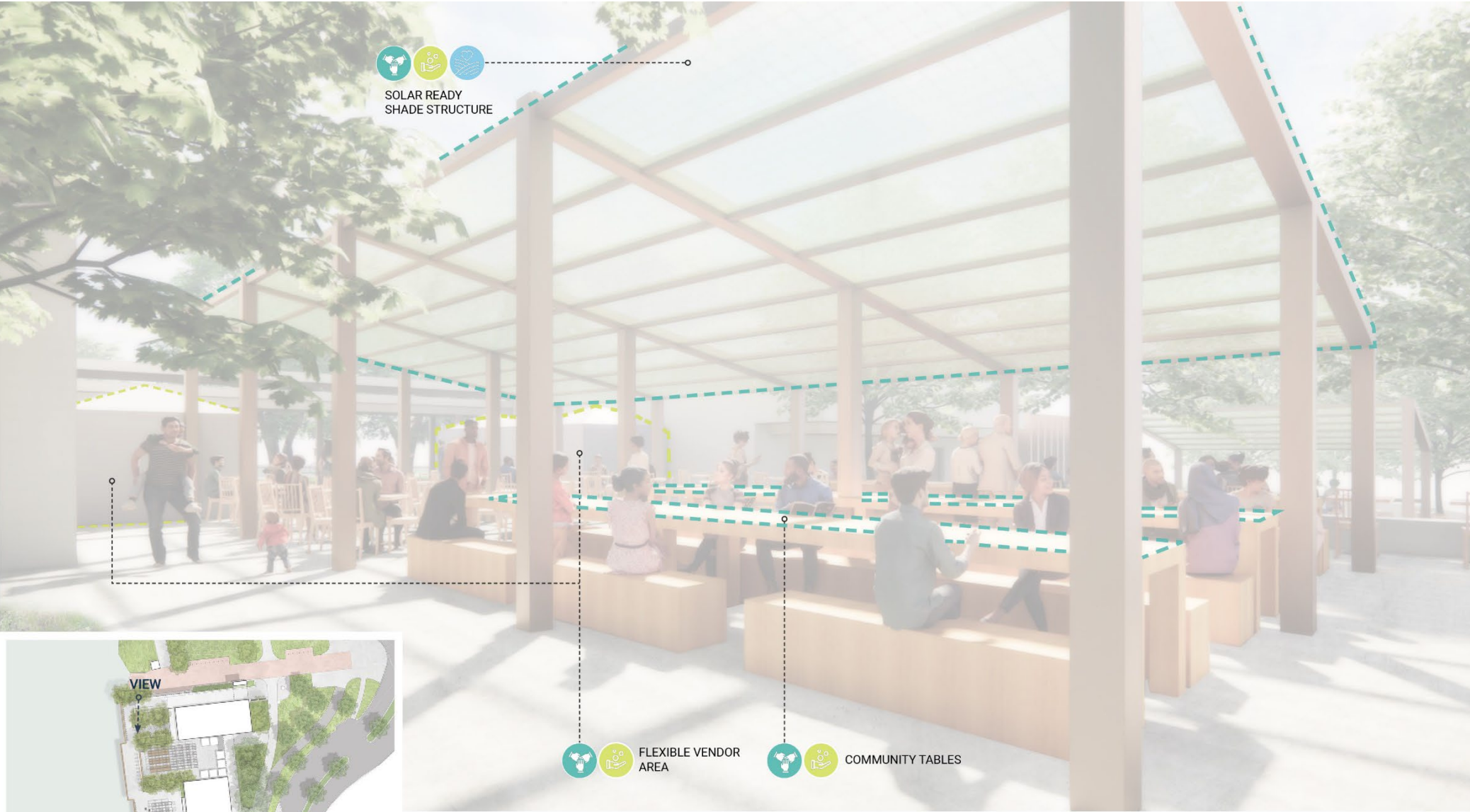
Bde Maka Ska Refectory Rebuild

Concept A - Community Tables



Bde Maka Ska Refectory Rebuild

Concept A –Community Tables



Bde Maka Ska Refectory Rebuild



REVEAL THE LEGACY



SUPPORT LOCAL ECONOMIES



HONOR THE LAND AND THE WATER



FOSTER HUMAN CONNECTION



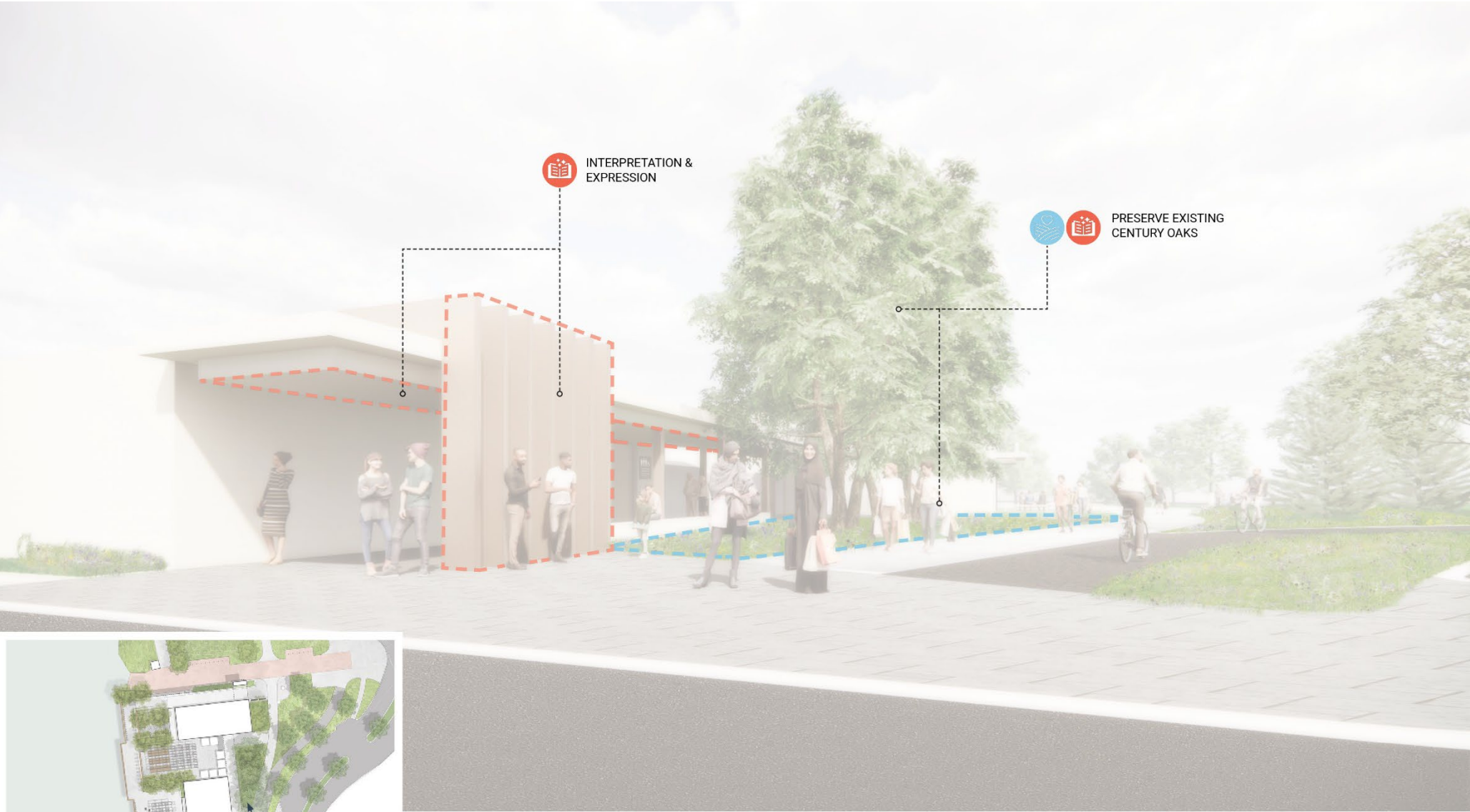
Minneapolis
Park & Recreation Board

Concept A – Restroom and Concession Building



Bde Maka Ska Refectory Rebuild

Concept A – Restroom and Concession Building



 REVEAL THE LEGACY

 SUPPORT LOCAL ECONOMIES

 HONOR THE LAND AND THE WATER

 FOSTER HUMAN CONNECTION

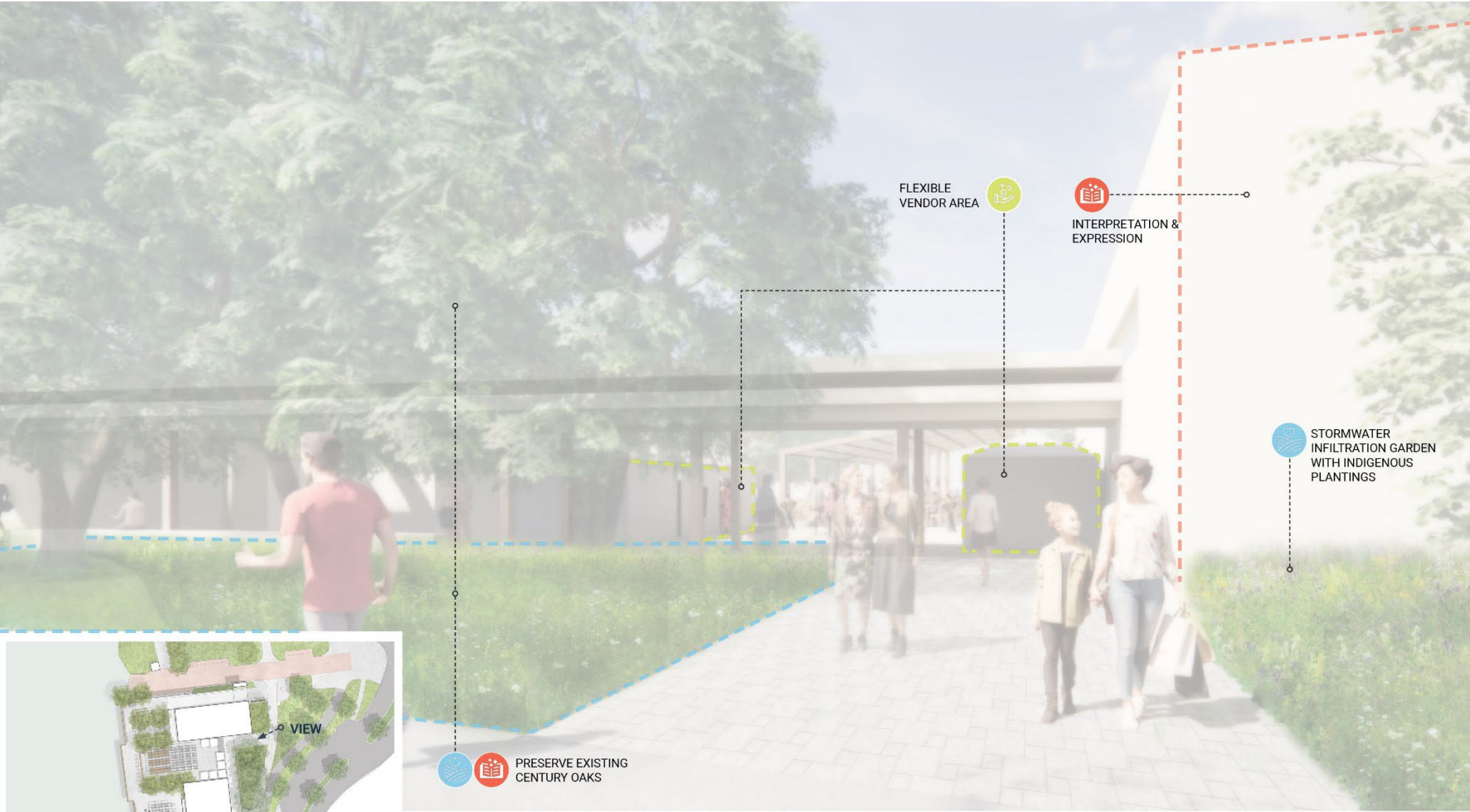
Bde Maka Ska Refectory Rebuild

Concept A – View from Existing Pedestrian Trail



Bde Maka Ska Refectory Rebuild

Concept A – View from Existing Pedestrian Trail



Bde Maka Ska Refectory Rebuild

 REVEAL THE LEGACY

 SUPPORT LOCAL ECONOMIES

 HONOR THE LAND AND THE WATER

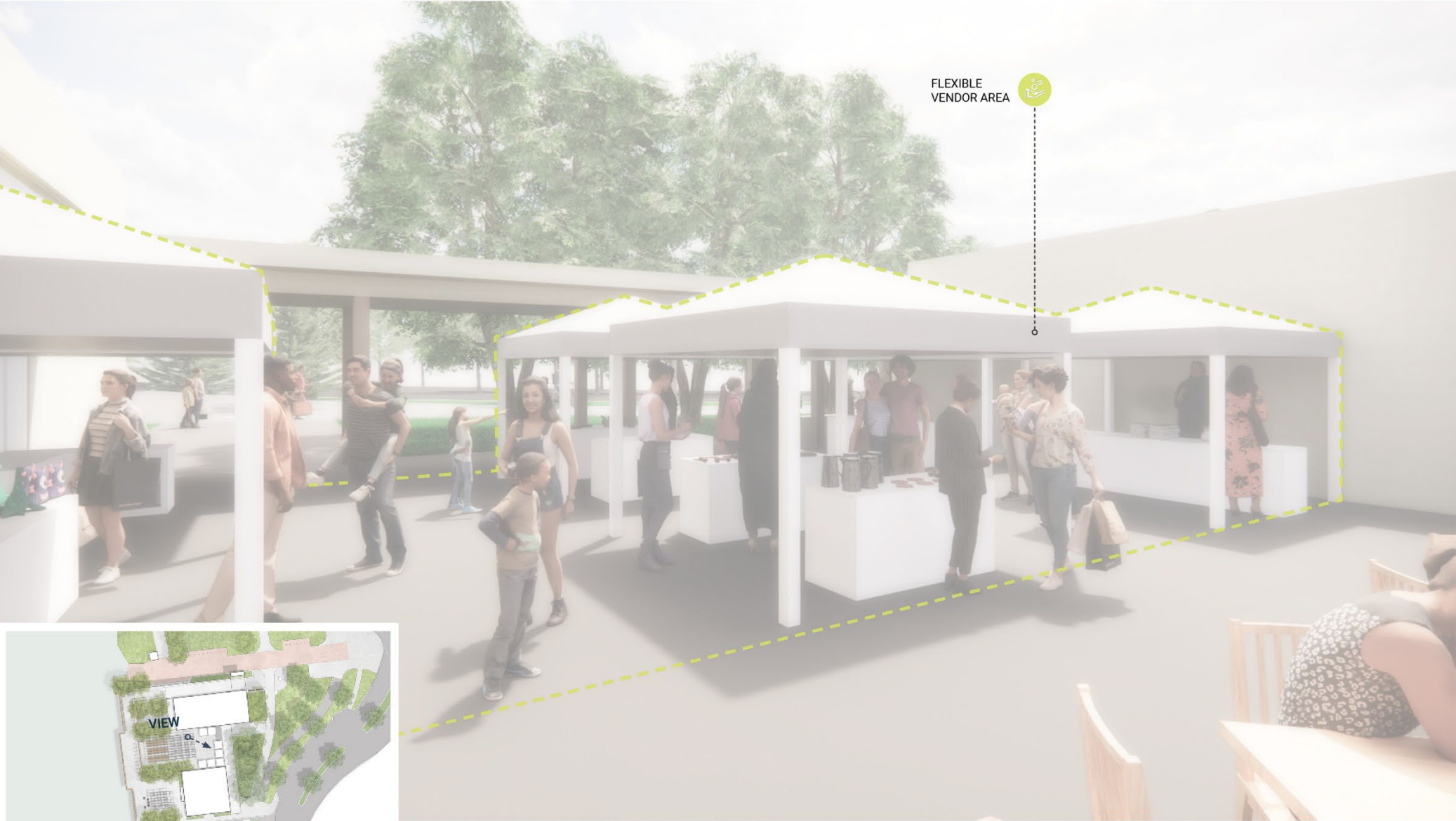
 FOSTER HUMAN CONNECTION

Concept A – Vendor Area



Bde Maka Ska Refectory Rebuild

Concept A – Vendor Area



Bde Maka Ska Refectory Rebuild



REVEAL THE LEGACY



SUPPORT LOCAL ECONOMIES



HONOR THE LAND AND THE WATER

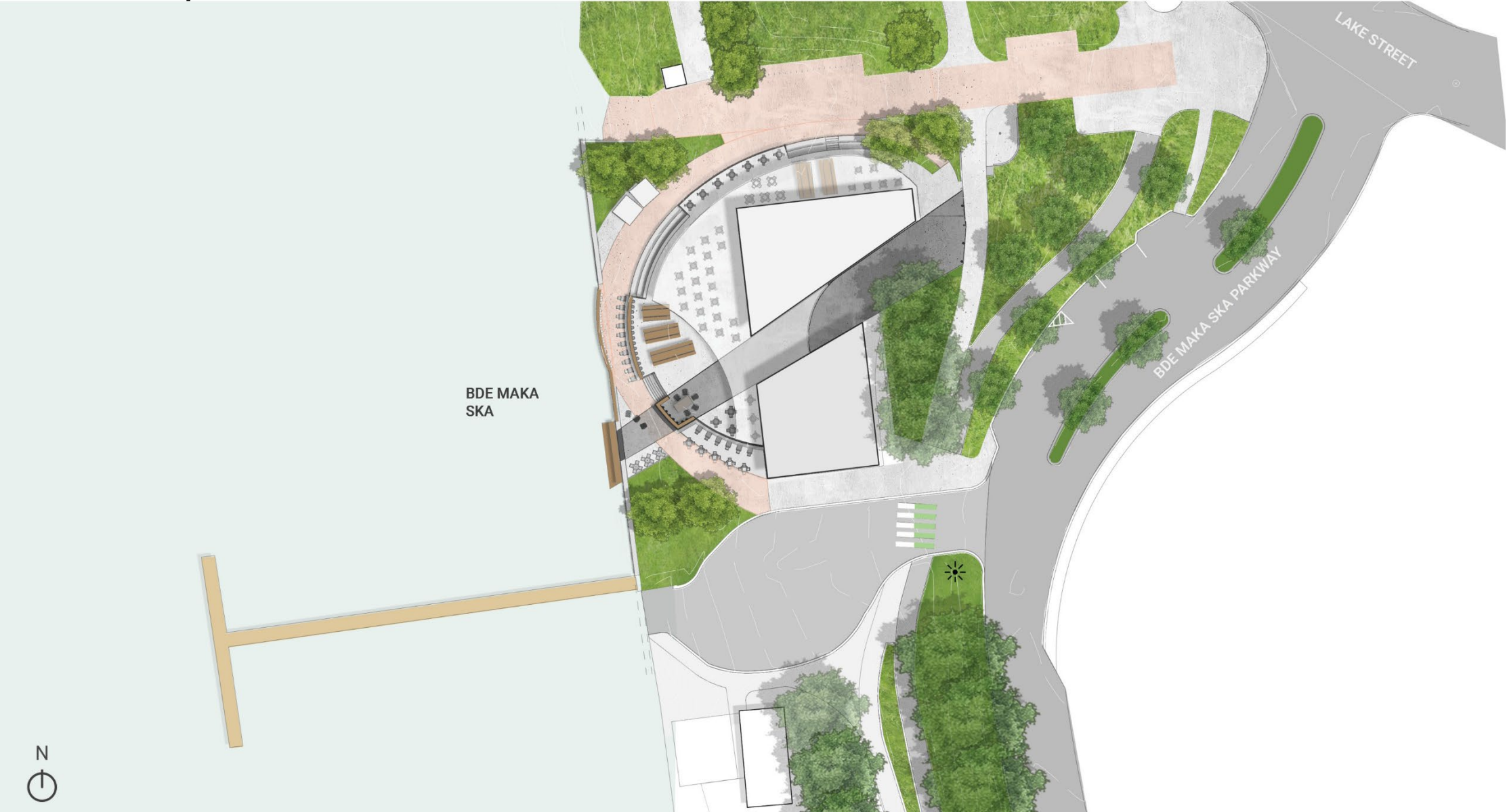


FOSTER HUMAN CONNECTION



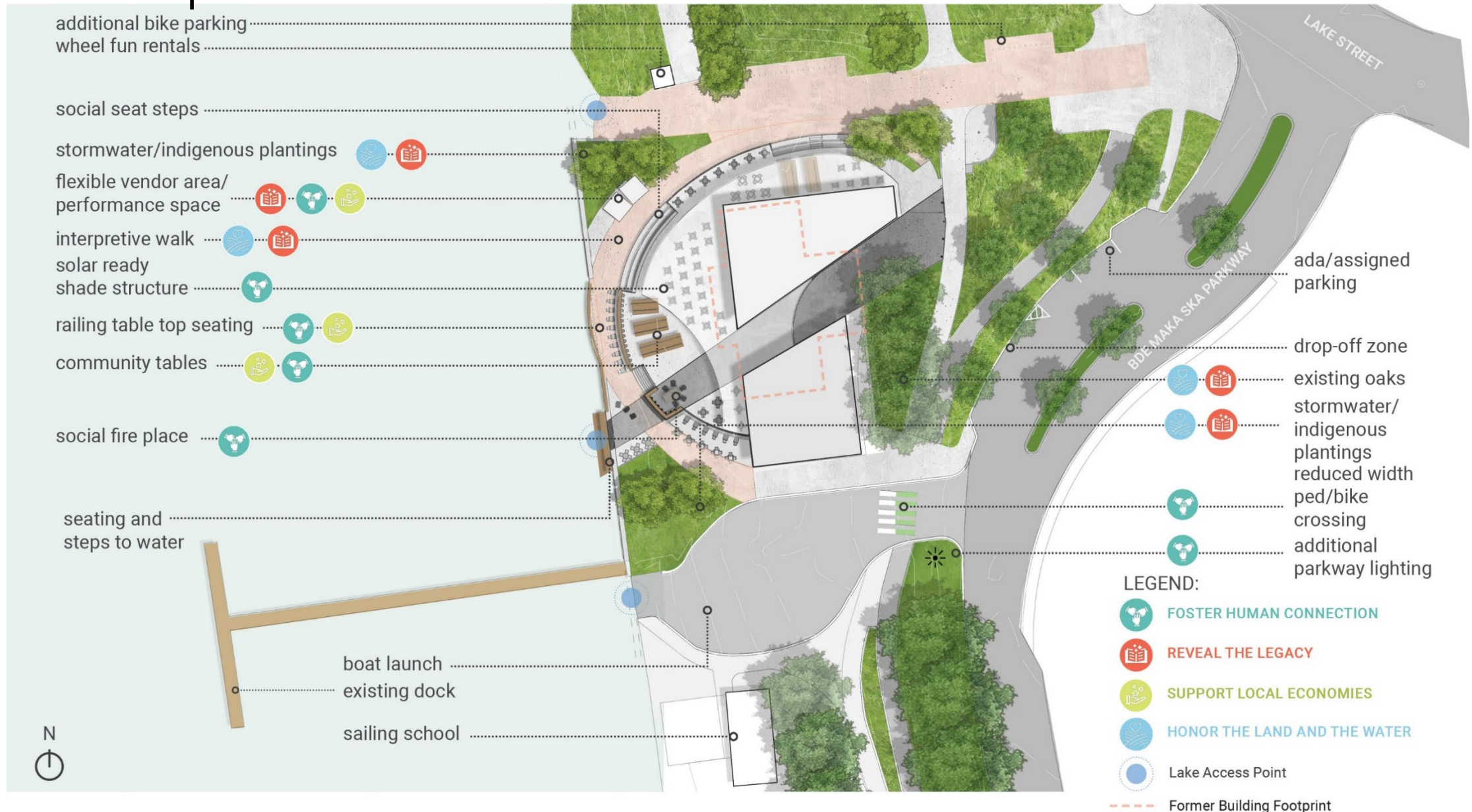
Minneapolis
Park & Recreation Board

Concept B



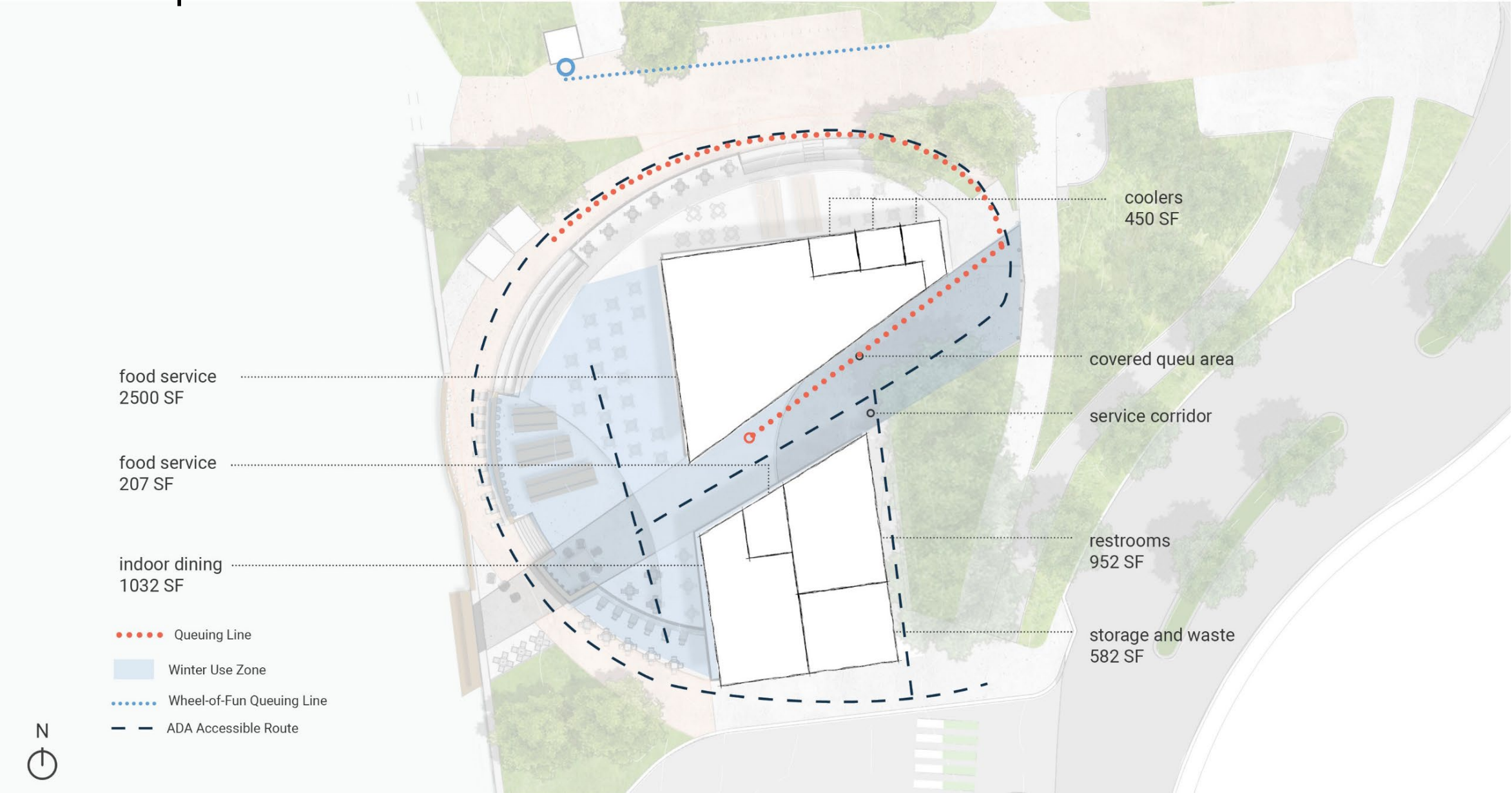
Bde Maka Ska Refectory Rebuild

Concept B



Bde Maka Ska Refectory Rebuild

Concept B

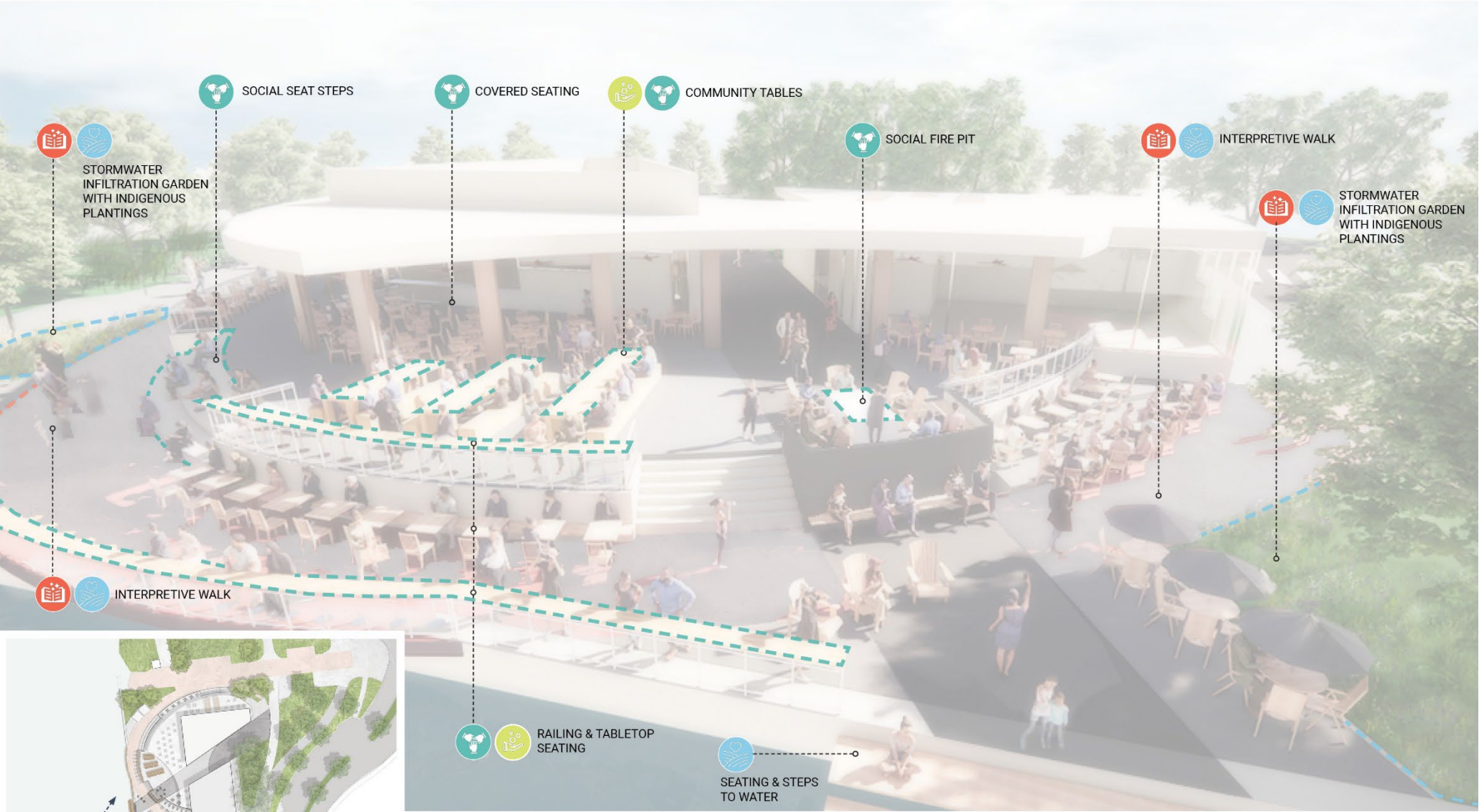


Concept B – View from the Lake



Bde Maka Ska Refectory Rebuild

Concept B – View from the Lake



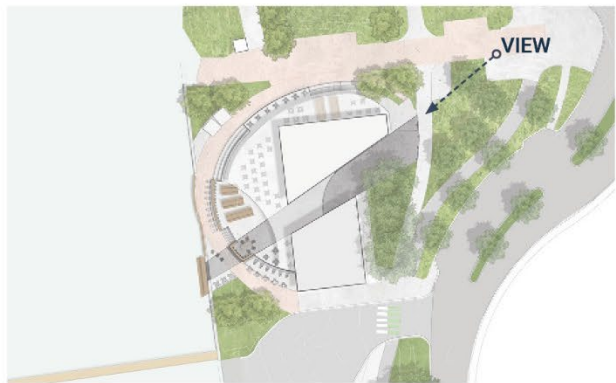
Bde Maka Ska Refectory Rebuild

Concept B - Entry View



Bde Maka Ska Refectory Rebuild

Concept B - Entry View



REVEAL THE LEGACY



SUPPORT LOCAL
ECONOMIES



HONOR THE LAND
AND THE WATER



FOSTER HUMAN
CONNECTION

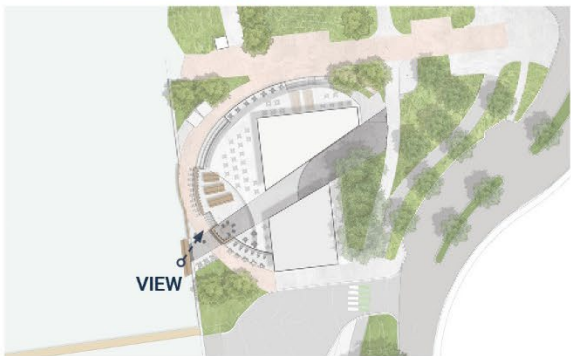
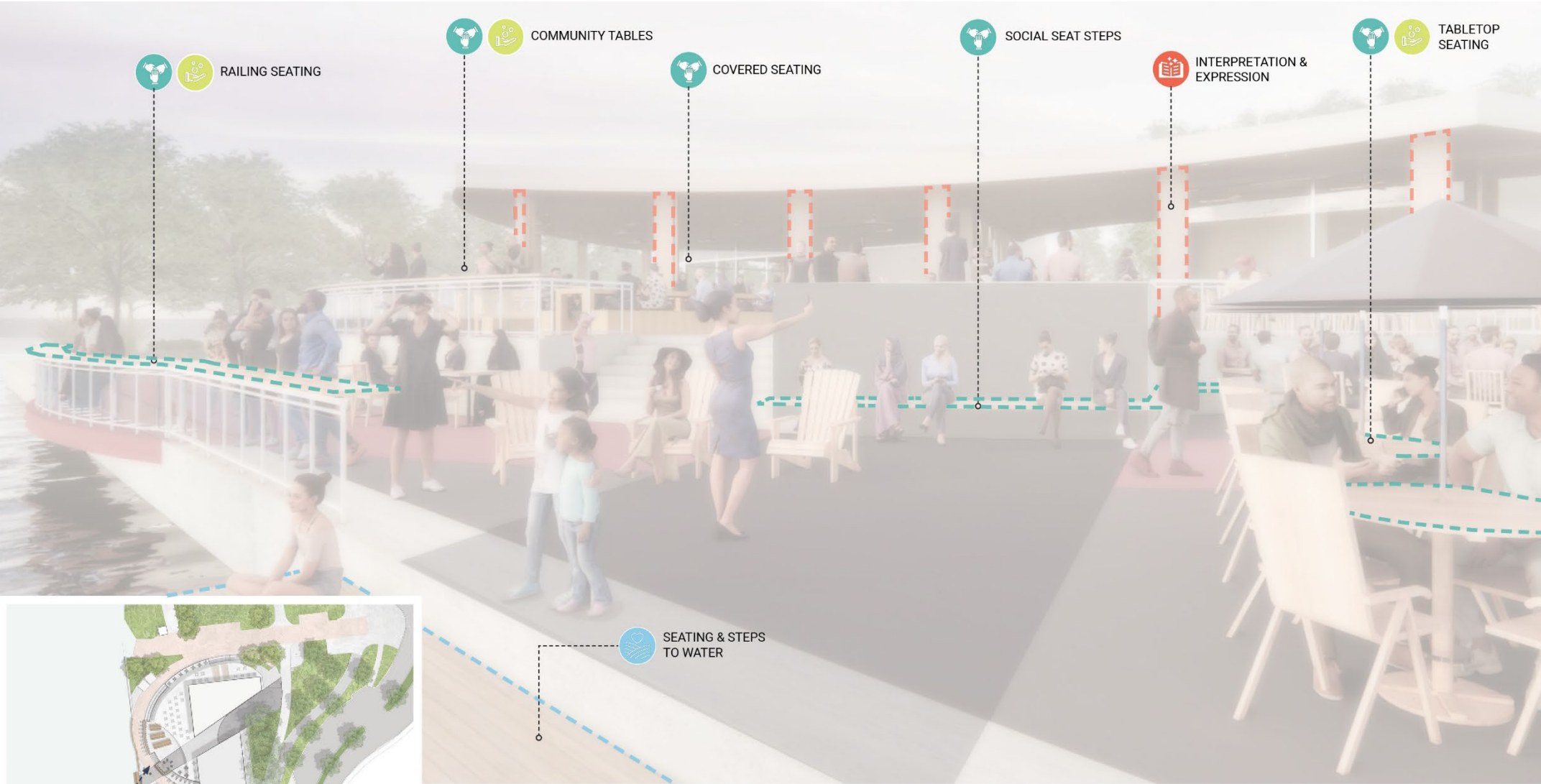


Minneapolis
Park & Recreation Board

Concept B – Lower Deck



Concept B – Lower Deck



REVEAL THE LEGACY



SUPPORT LOCAL ECONOMIES



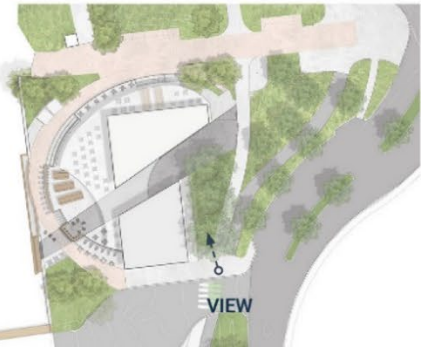
HONOR THE LAND AND THE WATER



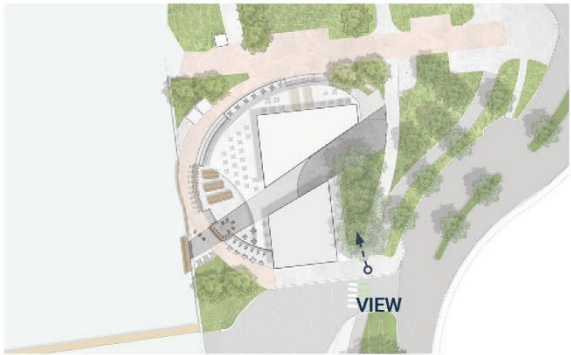
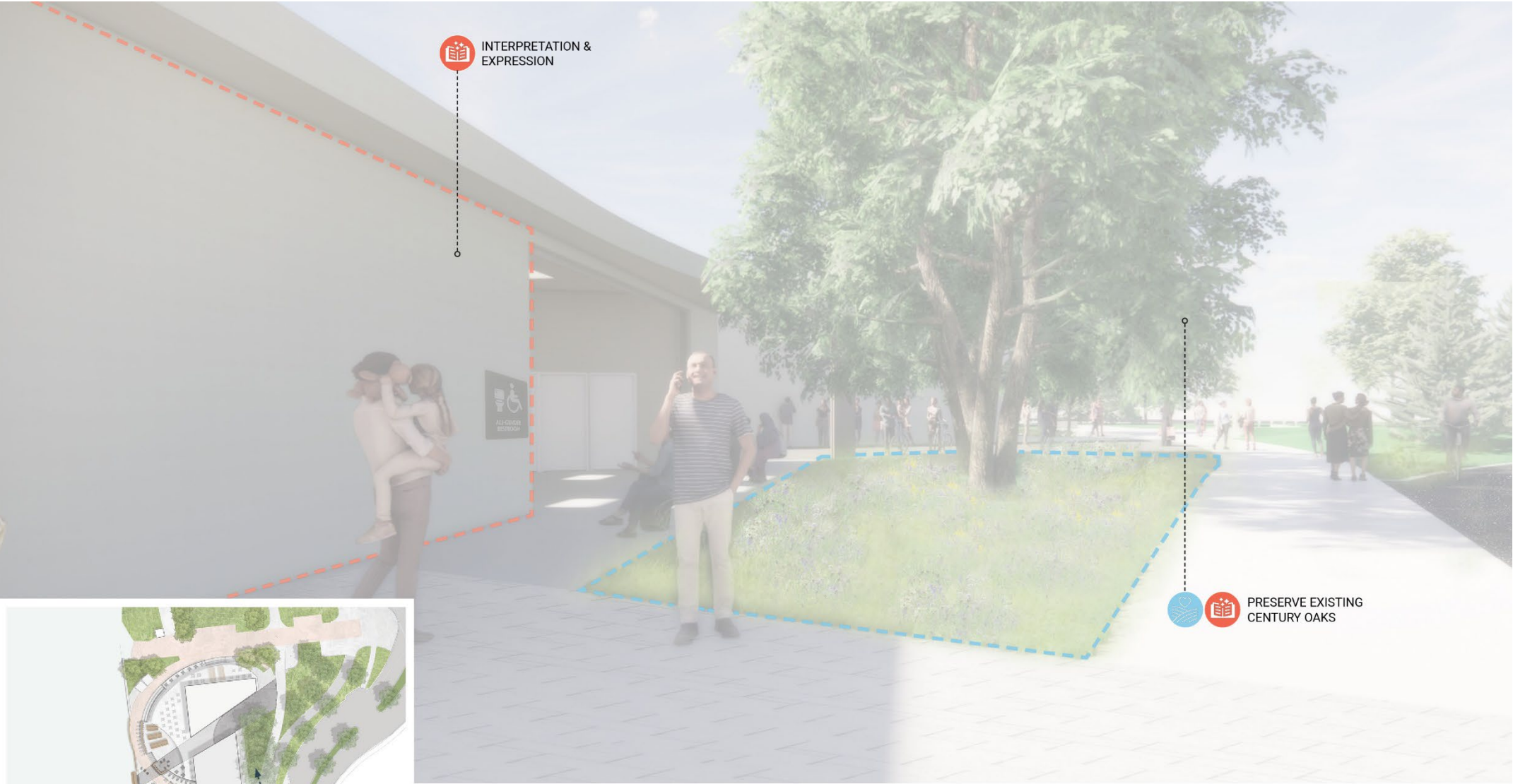
FOSTER HUMAN CONNECTION



Concept 2 – Restroom Building



Concept 2 - Restroom Building



REVEAL THE LEGACY



SUPPORT LOCAL ECONOMIES



HONOR THE LAND AND THE WATER



FOSTER HUMAN CONNECTION

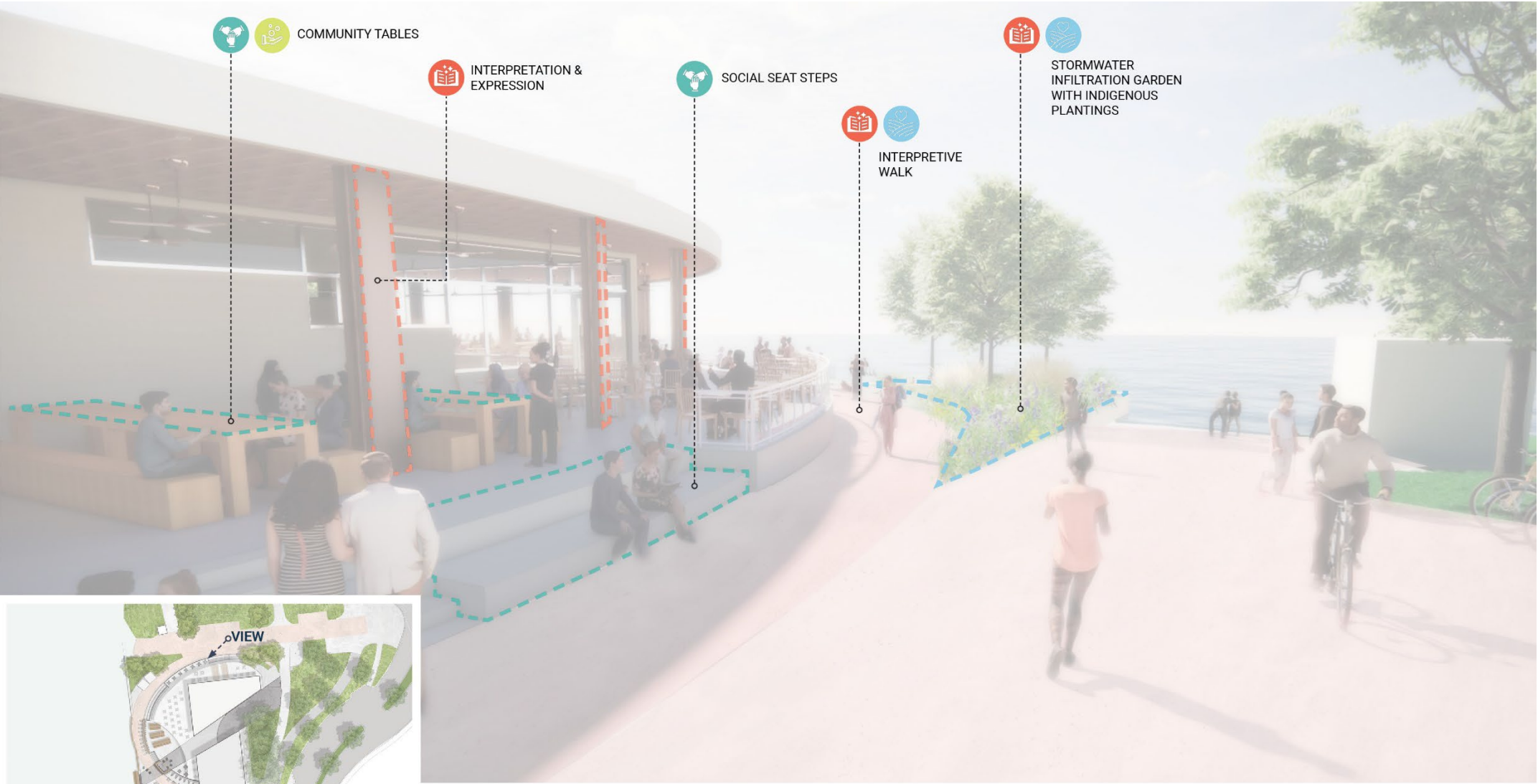


Minneapolis
Park & Recreation Board

Concept 2 – View from Existing Promenade



Concept 2 – View from Existing Promenade



REVEAL THE LEGACY



SUPPORT LOCAL ECONOMIES



HONOR THE LAND AND THE WATER



FOSTER HUMAN CONNECTION



Concept B - Vendor and Performance Area



Concept B - Vendor and Performance Area

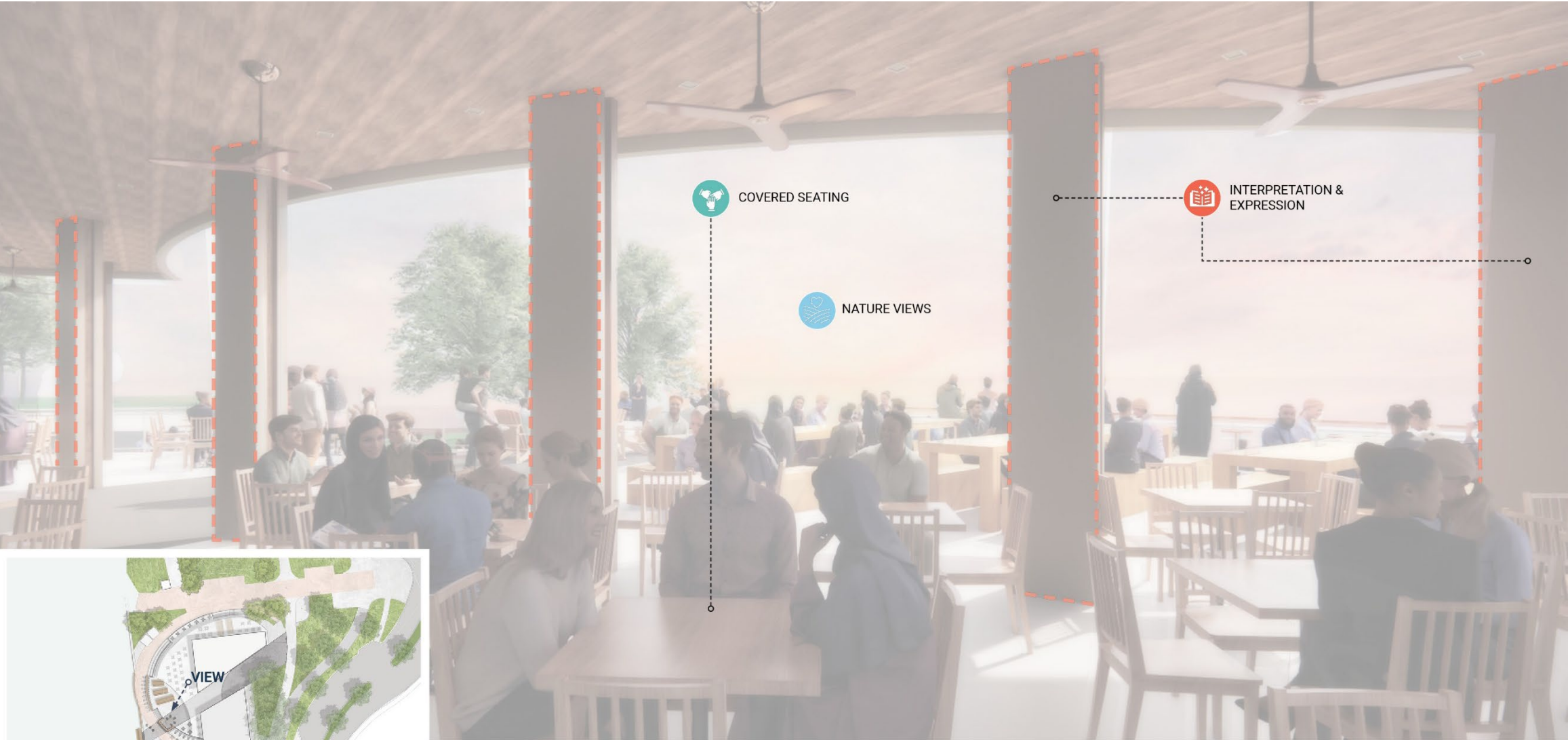


Bde Maka Ska Refectory Rebuild

Concept B – View from Under the Pavilion



Concept B – View from Under the Pavilion



REVEAL THE LEGACY



SUPPORT LOCAL ECONOMIES



HONOR THE LAND AND THE WATER



FOSTER HUMAN CONNECTION

Concept 2 – View from Upper Terrace



Join the Conversation! Brief presentation to start with open Q&A session to follow.

- March 23 from 12-1pm - <https://zoom.us/j/97989148288?pwd=QU1pOExqdUNzQWEram1KS1VRSUF0QT09>
- March 24 from 5-6pm - <https://zoom.us/j/97100944632?pwd=Q0dPK2NsYVRLaERmTXgzUUx5TDhiZz09>
- March 29 from 7-8pm - <https://zoom.us/j/97259457291?pwd=cnlxSTdPeENkWIFCU0J0bVRNbDhPQT09>

Thank you!
Dan Elias

MPRB Project Manager
delias@minneapolisparks.org

Project Website: www.minneapolisparks.org/bmsrebuild

Project Survey: www.surveymonkey.com/r/bmsrebuild