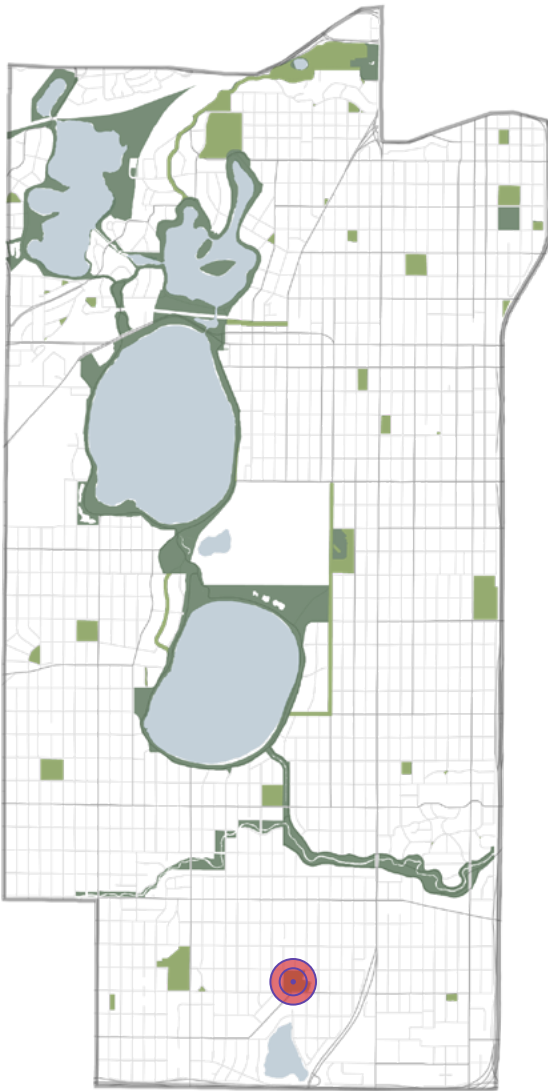


KENNY PARK



LOCATION AND HISTORY

Kenny Park is sandwiched between Anthony Middle School and Kenny Elementary School on West 57th Street and Girard Ave South. The land for Kenny Park was acquired in 1948. Half of the land was purchased, and the other half was received free from the state, which had acquired it for failure of the previous owners to pay taxes. The park is named for Sister Elizabeth Kenny, a renowned advocate for fighting polio and the founder of the Sister Kenny Institute. In the 1940s polio scares were so prevalent that playgrounds were practically empty. Parents were afraid that their children would contract the polio virus if they played on public grounds or swam in city lakes.

The first attempts to acquire the land for a park were in 1928, a year after Minneapolis annexed about a mile of northern Richfield from Fort Snelling to Edina, which created the challenge of providing parks and schools for the newest parts of Minneapolis. However, the Park Board abandoned plans for a park at this site in 1932 when property owners began to voice their objections to being assessed for the acquisition; understandable given the economic toll of the Great Depression.

In 1948, with the economic recovery and population growth following World War II, the Park Board acquired Kenny Park with plans to make it a children's playground. Property owners agreed to the assessments and in 1953 the Park Board began grading the park. Fill was hauled in to level the fields; some of it was excess material from Armatage Park, eight blocks to the west. Construction of the park was largely completed by 1955. The shelter was

enlarged in 1928, then remodeled again in 1982. The playground was rehabilitated in 1997. The Park Board experimented with 18-inch high pond hockey boards on the Kenny Park skating rink in 2007. In 2009, tennis courts were resurfaced, and in 2012 the neighborhood raised funds to help pay for the addition of three shade structures installed near the playground and pool.

Excerpted from history written by David C. Smith

EXISTING CONDITIONS AND CHARACTER

Kenny Park serves as the primary outdoor space for schools on both sides, especially during recess. A very small neighborhood center sits in the center of the park with ball diamonds and field space to one side and tennis courts, play areas, half-court basketball, and a wading pool with picnic areas on the other. The park is often bubbling with activity and the tiny park building runs a number of popular activities.

The park sits in a large open bowl between the two schools. Two multi-use diamonds, one diamond with grass infield, and several multi-use fields next to it also host a skating rink and pond hockey in the winter. Kenny's natural sloping hills on three sides make excellent sledding hills in winter.

Next to the play areas are a small grass area and a popular gaga pit. These areas are heavily used, as evidenced by erosion in the turf which becomes quite muddy after it rains. School staff, parents, and neighbors have all expressed interest in a refresh of this area to manage drainage and erosion concerns. A well-used half basketball court sits at the south end of the play area.

THE PROPOSED DESIGN

The design for Kenny Park was approached not only as an individual neighborhood site, but also as one part of a four-park collection in the far southwest portion of the service area which has a strong and interconnected focus on athletics, primarily field and diamond sports. Kenny will be designated as a “field sports focused park” with the removal of diamonds and the installation of a premier artificial turf field, striped for field sports only. This will balance nearby Armatage Park which is designated a “diamond sports focused park”.

The sloped hills surrounding Kenny’s new fields will be naturalized with native plantings and the existing sledding hill preserved. A new walking path connecting West 57th Street to West 58th along the top of the hill on the west side completes a walking loop of the entire park. The existing two tennis courts with pickleball striping remain, as do the play areas and gaga pit near the school. Play areas will be somewhat expanded when improved.

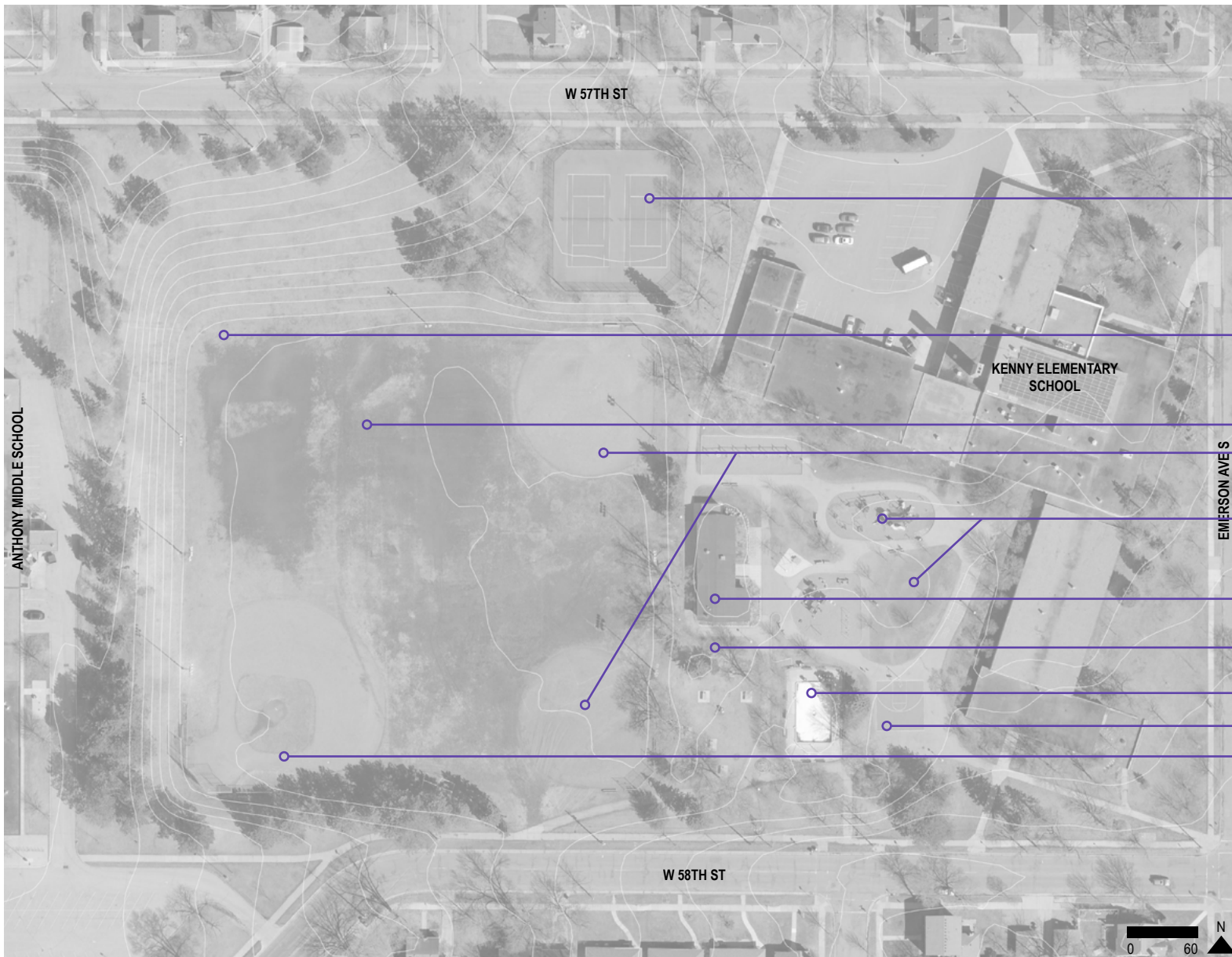
A significant improvement at Kenny is the proposed expansion of the existing small neighborhood center with an open air shelter facing a new splash pad with shade structures that replaces the existing pool. By turning off the water, the splash pad plaza can be used by students during recess hours and during the winter months as extra play space. To the east of the splash pad is a relocated picnic area and a series of sport courts which include two half-court basketball hoops as well as striping for four-square and additional games. Additional native plantings fill the open space bordering West 58th Street. Skating and pond hockey move to the expanded ice rinks at Armatage.

CONNECTIONS BETWEEN PARKS

Kenny is equidistant from Armatage Park and Penn Model Village Triangle one mile to the west, and Windom South Park one mile to the east. It is also one mile south of the Minnehaha Parkway Regional Trail and the Grand Rounds, connecting it to much of the rest of the park system.

KNOWN LAND USE AND COORDINATION ISSUES

Recreation programming will need to be coordinated between Kenny and Armatage parks to accommodate and balance both diamond and field sports in the area. Some of the site is shared use between the Park Board and Minneapolis School Board.



TENNIS COURTS WITH PICKLEBALL STRIPING

SLEDDING HILL

HOCKEY/SKATING RINK
MULTI-USE DIAMONDS

PLAY AREAS

NEIGHBORHOOD CENTER

PICNIC AREA

WADING POOL

HALF COURT BASKETBALL
BASEBALL DIAMOND

KENNY PARK - EXISTING CONDITIONS



PROPOSED DESIGN FEATURES

1. NATURALIZED AREAS
2. WALKING LOOP
3. ARTIFICIAL TURF FIELD (with striping for 2 premier multi-use fields)
4. UPDATED PLAY AREAS
5. PROPOSED BUILDING EXPANSION WITH OPEN AIR SHELTER
6. UPDATED PICNIC AREA
7. SPLASH PAD WITH SHADE STRUCTURES
8. MULTI-USE SPORT COURT (with 2 half-court basketball hoops and 2 four-square courts)

EXISTING FEATURES

- A. NEIGHBORHOOD CENTER
- B. SLEDDING HILL
- C. TENNIS COURTS WITH PICKLEBALL STRIPING (2)
- D. GAGA PIT

KENNY PARK - PROPOSED PLAN

| | 1: General Input Spring-Winter 2018 <i>Input themes prior to initial concepts</i> | 2: Initial Concepts Winter-Spring 2019 <i>Input themes on initial concepts</i> | 3: Preferred Concept Now <i>Key elements of the concept</i> |
|------------------|---|--|--|
| aquatics | Like pool Interest in splash pad so usable space during school year | Split support for splash pad vs. pool Support shade | Pool removed and splash pad with shaded structures added |
| play | Like playground but needs updates Needs more young child equipment “Dirt pit” area needs better solution Like the gaga pit | Play area needs updates, refresh | Expanded play areas and gaga pit remain in same location |
| athletics | Fields and diamonds need repair, better quality Like baseball here Play T-ball, softball, baseball, soccer, football, ultimate frisbee here | Support for upgraded field, artificial turf Support for both diamonds and fields Support for some parks to specialize in particular sports | Replace diamonds and fields with space for two premier artificial turf fields. Kenny becomes ‘field-focused park’ to balance Armatage as ‘diamond-focused park’ |
| courts | Like tennis courts Half court basketball not sufficient Less interest in tennis courts Interest in pickleball | Support for basketball Support four square Support for tennis Support for pickleball | Half court replaced with multi-use sport court with two basketball hoops and four-square striping Existing tennis courts with pickleball striping retained |
| winter | Like ice rink & hockey here Like sledding hill | Like ice but it destroys the fields Walking loop interferes with sledding hill | Removal of winter skating in favor of premier artificial turf fields Sledding hill remains and walking loop moved to top of hill |
| landscape | Interest in pollinator gardens | Support for naturalized areas | Naturalized areas added |
| other | Recreation center is too small | Support building expansion Split support on building relocation | Recreation center expanded with open air shelter |

KENNY PARK PROCESS

| Park Name | Asset Type | Project | 2020 Estimated Cost/Project | Notes |
|-------------------|------------|---|-----------------------------|-------|
| Kenny Park | Aquatics | Splash Pad with Shade Structures | \$ 1,724,436 | |
| Kenny Park | Play | Expansion of Existing Play Areas: includes relocation and renovation of existing gaga pit | \$ 1,165,780 | |
| Kenny Park | Athletics | Premier Artificial Turf Athletic Field: striped for 2 premier multi-use fields | \$ 3,061,128 | |
| Kenny Park | Courts | Multi-Use Sport Courts: includes 2 basketball hoops and 2 four-square courts | \$ 163,260 | |
| Kenny Park | Courts | Renovate Existing Tennis Courts (2): include existing pickleball striping | \$ 265,298 | |
| Kenny Park | Landscape | Naturalized Areas | \$ 124,265 | |
| Kenny Park | Other | Proposed Building Expansion with Open Air Shelter | \$ 437,741 | |
| Kenny Park | Other | Renovate Walking Paths: includes walking loop | \$ 566,676 | |
| Kenny Park | Other | Miscl. signs, trees, furniture | \$ 75,086 | |
| Kenny Park | | TOTAL | \$ 7,583,670 | |

COST ESTIMATE