

3

SERVICE AREA VISION

- GUIDING PRINCIPLES
- PARK SEARCH AREAS
- AQUATIC FACILITIES
- PLAY FACILITIES
- ATHLETIC DIAMOND FACILITIES
- ATHLETIC FIELD FACILITIES
- TENNIS COURT AND PICKLEBALL FACILITIES
- BASKETBALL AND MULTI-SPORT COURT FACILITIES
- SKATE PARK/ALL-WHEEL/BIKE SKILLS FACILITIES
- PICNIC FACILITIES
- WINTER ACTIVITY FACILITIES



GUIDING PRINCIPLES

During CAC meeting #16, the Community Advisory Committee (CAC) reviewed a list of initial guiding principles. These expanded guiding principles are specific to the Southwest Service Area Master Plan. The Principles are organized in three groups: The Foundation, Planning and Design, and Facilities and Programming. These offer guidance and a touchstone for making decisions about parks in the service area.

THE FOUNDATION

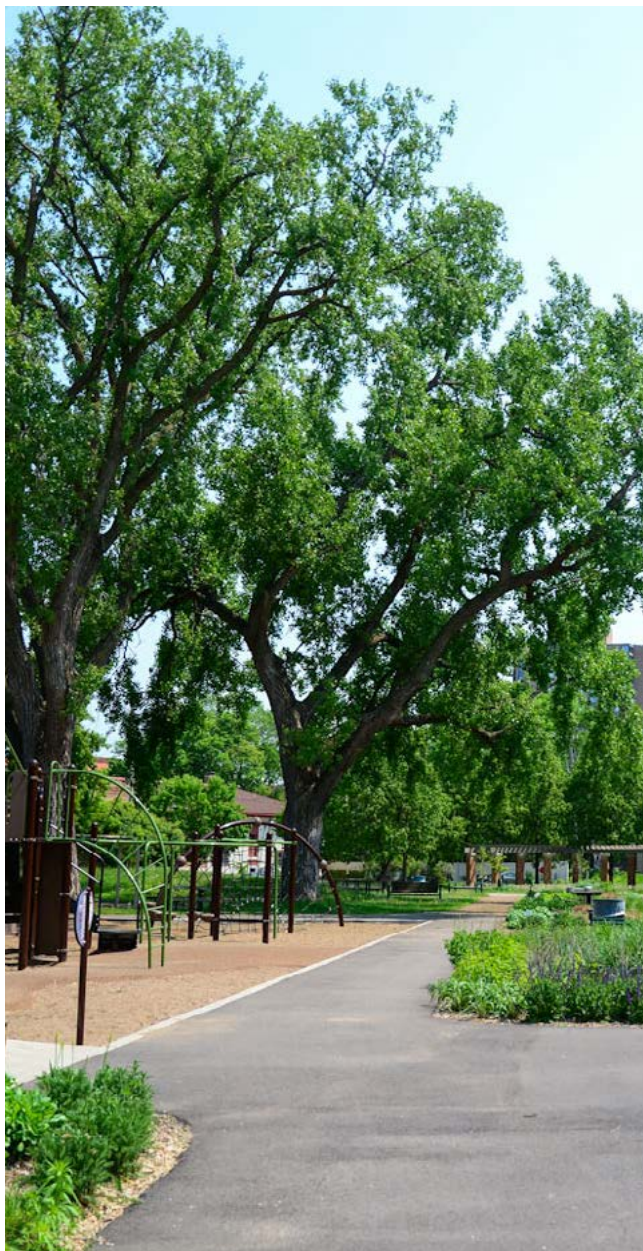
1. Design, build, program, and maintain parks in a way that ensures variety and excellence.
 - a. Revere the historic legacy of parks, while also making a commitment to explore and implement innovative ideas.
 - b. Reflect the values, vibrancy, and history of park neighborhoods and the city at large.
 - c. Honor the many years of park investment and commitment that neighborhood and community organizations have made to neighborhood parks.
 - d. Aim for a healthy balance – between types of recreation supported, between naturalized and developed spaces, between building and maintaining, between a focus on history and the future.
 - e. Recognize that the regional parks and trails in Southwest – the lakes and creek – provide amenities that may overlap with, and supplement, neighborhood parks yet are different in character and use.
2. Value the voices of the full spectrum of community members and engage community in decisions about parks whenever possible.
 - a. Recognize the Dakota and other indigenous peoples who first called these lands home.
 - b. Pay particular attention to underrepresented and underserved communities.
 - c. Include a youth voice in design, planning, and programming decisions.
 - d. Take diverse language groups of park users into account.
3. Work toward neighborhood parks that are welcoming for all and which support a rich variety of uses.

- a. Ensure that park designs, facilities, programs, and overall character provide equitable access, are culturally appropriate, and invite people in to enjoy these shared public spaces. This is particularly important considering the history and current realities of economic and racial disparities between southwest communities and neighborhoods throughout the rest of Minneapolis.
 - b. Strive to provide high quality parks in areas of increasing density, recognizing that many of these areas historically lack parks partly as a result of the impacts of the Elwell law, redlining, and restrictive covenants.
4. Value and build upon the positive environmental and ecological legacy already present in southwest – by supporting connected and resilient habitat, a thriving and diverse tree canopy, healthy waterways, environmental education, sustainable development, and stormwater management practices.
 - a. Consider a changing climate when designing, building, and maintaining parks.
 - b. Implement food truck parking areas and space for pop-up restaurants.
 5. Strive to make sound and meaningful financial investments in parks that provide value to users.
 - a. Explore partnerships for funding, programming, planning, and stewardship, especially with schools, watershed districts, municipal agencies, and community organizations. MPRB can't and shouldn't do everything on its own.

PLANNING AND DESIGN

1. Create quality spaces for the community to gather, connect, celebrate, relax, and play.
 - a. Recognize the importance of having and maintaining the basics: water, restrooms, seating, trails, lighting, shade, etc.
 - b. Design spaces to be flexible so they can accommodate a wide variety of uses and adjust to the needs of a changing demographic over the life span of this master plan.
 - c. Work toward safe parks for all through design of lighting, clear sight lines, durable materials, and increased activity.
 - d. Integrate arts, culture, and history into parks, providing performance spaces, visual art, historic interpretation, and artistic infrastructure whenever possible.
 - e. Include gathering plazas and courtyards in park designs, consider moveable seating and tables.
2. Focus on designs that encourage life-long use and enjoyment of parks.
 - a. Consider multigenerational parks for all age ranges with focus on youth, teen, adult and senior interests and needs.
 - b. Ensure materials used in park construction are strong, durable, environmentally responsible, easy to maintain, and safe, especially when used by children and seniors.
3. Work with partners to integrate park development with small area, watershed district, county, regional, and citywide planning efforts.
 - a. Whenever parkland is adjacent to a





Minneapolis Public School, make efforts to align with that school on the utilization of shared land and facilities.

- b. Work with City of Minneapolis to complete sidewalk gaps in or adjacent to parks.
 - c. Work with partners to implement connections to and between parks: safe street crossings, trail connections, roads as park connectors, greenways/bikeways, and wayfinding. In particular create safe connections between neighborhood parks, schools, and the regional park and trail system.
 - d. Work with the City of Minneapolis to complete and enhance the street network as a connecting web between parks, including bicycle and pedestrian infrastructure.
 - e. Install system maps at neighborhood parks, to direct users to nearby amenities.
 - f. Support the continued improvement of, and park connections to, the Midtown Greenway. In particular, potential new connections at The Mall Park and near the Lyn-Lake area.
 - g. Connect to the Park Board's planned visions for the Minneapolis Chain of Lakes Regional Park, Minnehaha Parkway Regional Trail, and Activity plans for urban agriculture, skate parks, and ecological systems.
 - h. Work with partners to improve public transit connections to and between parks.
 - i. Support partnerships with community and other volunteer groups interested in implementing master plan projects.
4. Support and improve park environments and

ecology through visionary design of sustainable naturalized areas, pollinator and native species gardens, publicly accessible urban agriculture, integrated stormwater capture, increased species diversity, diverse tree canopy, and a variety of habitat enhancements.

- a. Enhance ecological corridor connections, especially those that connect neighborhood parks to the regional parks and trails system.
- b. Explore sustainable construction techniques and materials, even if initial cost may be higher, to improve environmental performance.
- c. Explore alternative energy production in parks, such as solar electric or heating, and geothermal heating/cooling.
- d. Include designated natural areas in most parks, particularly sunny areas, to both reduce acreage of mown turf and to increase habitat and pollinator friendly spaces. Develop effective management strategies on a park-by-park basis before implementing those deliberately restored natural areas. Restoration includes prairie, savanna, woodland, and meadow, utilizing appropriate native plants and grasses; it does not entail leaving non-native turf grasses to grow without mowing. Where turf remains, look for ways to make it more sustainable.
- e. Work to protect existing mature trees as part of new concept designs and implementation, and strive to expand the urban forest.
- f. Look for opportunities to improve the air and water quality of the parks near industry or freeways and highways.

- g. Explore construction of sustainable parking lots: those that manage their own stormwater.
 - h. Consider parks as one vehicle for equitable food access in Minneapolis by expanding fruit and nut tree planting and designating community garden sites and other urban agriculture opportunities, as an aspect of implementation of the MPRB-adopted Urban Agriculture Plan.
 - i. Explore whenever possible the use of dark sky outdoor lighting with reduced glare and brightness.
 - j. Partner to create naturalized stormwater BMPs when possible, including pre-treatment for sediment.
5. Implement significant park enhancements—with the programmatic, financial, and leadership support of community and agency partners—at four key parks and several proposed parks, recognizing MPRB cannot act alone in these projects, as they are beyond the scale of the organization's budget:
- a. A major year-round field house venue at The Parade Park that would include artificial turf fields, practice space, restrooms, and storage. The design of which should preserve views of the downtown skyline for field house users, and have the potential for sustainable use of the roof for solar panels, a green vegetated roof, or additional recreation space.
 - b. Lynnhurst Park re-envisioned as an environmental education hub, with an expanded recreation/environmental center, re-meandered and daylighted tributary, innovative stormwater management, expanded water play and recreation opportunities, increased safety, and watershed protection with the raising of a section of 50th Street onto a bridge to allow people and water to flow underneath.
 - c. New and/or updated premier diamonds at Armatage, Linden Hills, and Rev. Dr. MLK Parks.
 - d. A new premier artificial turf field at Kenny Park.
 - e. Several potential parks that will require agency and community collaboration, including Linden Hills Trolley Path, West Lake Bus Layover, Garfield Lot, Washburn Water Tower, and 31st Street Median.
6. Manage and resolve land use, land ownership, lease agreement, and other site control issues, if applicable, prior to implementation of capital improvements.
- a. Resolve ownership and management of triangles across the service area.
7. Where feasible, seek additional parkland or private land available for public use in southwest.
- a. Follow guidance under Chapter 3 of this master plan for Park Search Areas.
 - b. Follow guidance in Chapter 4 for Potential Parks.
 - c. Consider locations not identified in this plan, but which may come to light in the future as demographics and density change in the service area, with such new system additions



being justified through demonstrated need and requiring amendment of this master plan.

FACILITIES AND PROGRAMMING

1. Increase year-round and winter activity opportunities.
2. Provide rewarding recreation opportunities for youth, adults, and seniors alike.
3. Partner with community volunteers when possible to expand facility & program offerings.
4. Encourage Park Stewardship Agreements to maintain and improve ecologically healthy spaces.
5. Put emphasis on maintaining existing parks and investments so they are safe and useable for many years.
6. Aquatics:
 - a. Transition from a wading pool dominated system to a mix of wading pools, splash pads, and hybrid facilities, in order to provide facilities for a broader range of youth and adults.
7. Athletic Fields:
 - a. Balance field and diamond recreation throughout the SW service area, relative to demand and need.
 - b. Improve overall quality of multi-use fields and diamonds, through soil conditioning, irrigation, proper grading, and other methods.
 - c. Ensure that safe, non-toxic materials are used in the construction of premier fields in the parks.
- d. Create an artificial turf multi-use field in the service area.
- e. With community and agency partners, implement an indoor fields facility at The Parade Park.
- f. Strive for flexible use of facilities throughout most the service area, but provide a few locations which focus on a particular use – specifically fields at Kenny and diamonds at Armatage.
- g. Create a premier baseball and a premier softball diamond in the service area.
8. Courts:
 - a. Continue and expand commitment to basketball, especially full-court, throughout the service area.
 - b. Develop multi-use courts that can be used for basketball, bike polo, futsal, skating, and other activities year-round.
 - c. Implement new types of use-specific courts where appropriate, such as for pickleball.
 - d. Focus tennis investment in targeted areas with larger banks of courts.
9. Play and Other Facilities:
 - a. Increase diversity of play opportunities to include adventure and nature play.
 - b. Implement a universally accessible playground in the service area.
 - c. Provide a variety of unique play options, including opportunities for organized activities as well as passive and unstructured enjoyment of parks, including imaginative play.





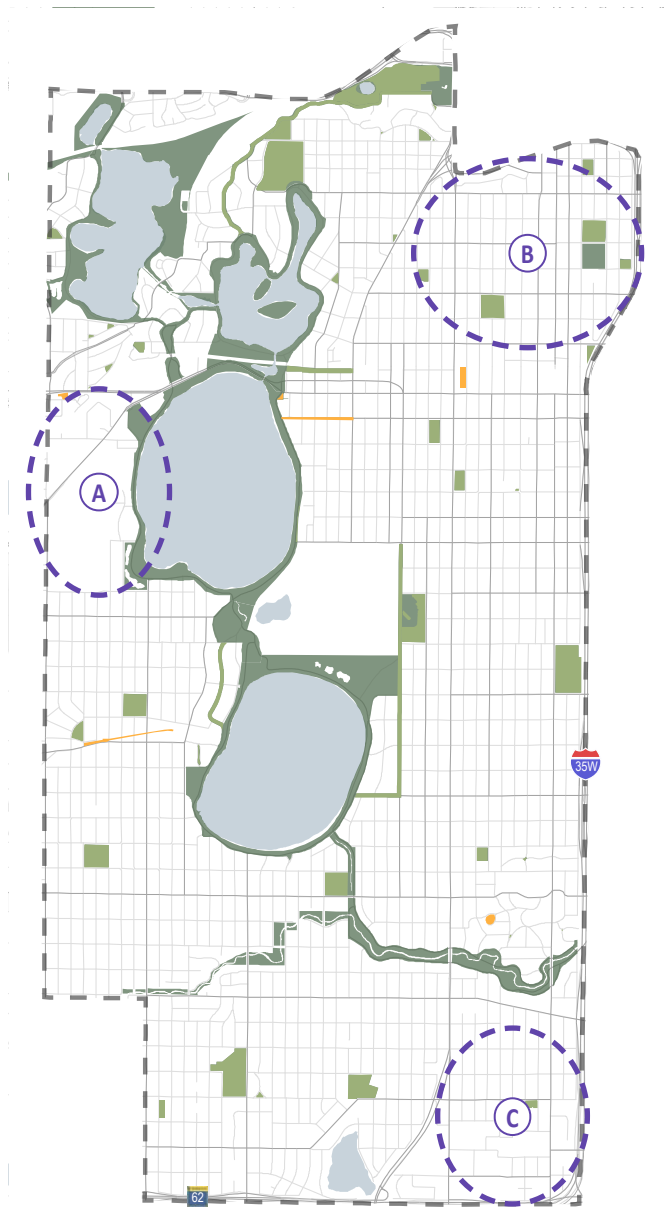
- d. Implement skate/bike parks within the service area, following the guidance of the adopted Skate Park Activity Plan.
- e. Implement bike playgrounds and bike trails within the service area.
- f. Provide a walking loop with seating in most parks.

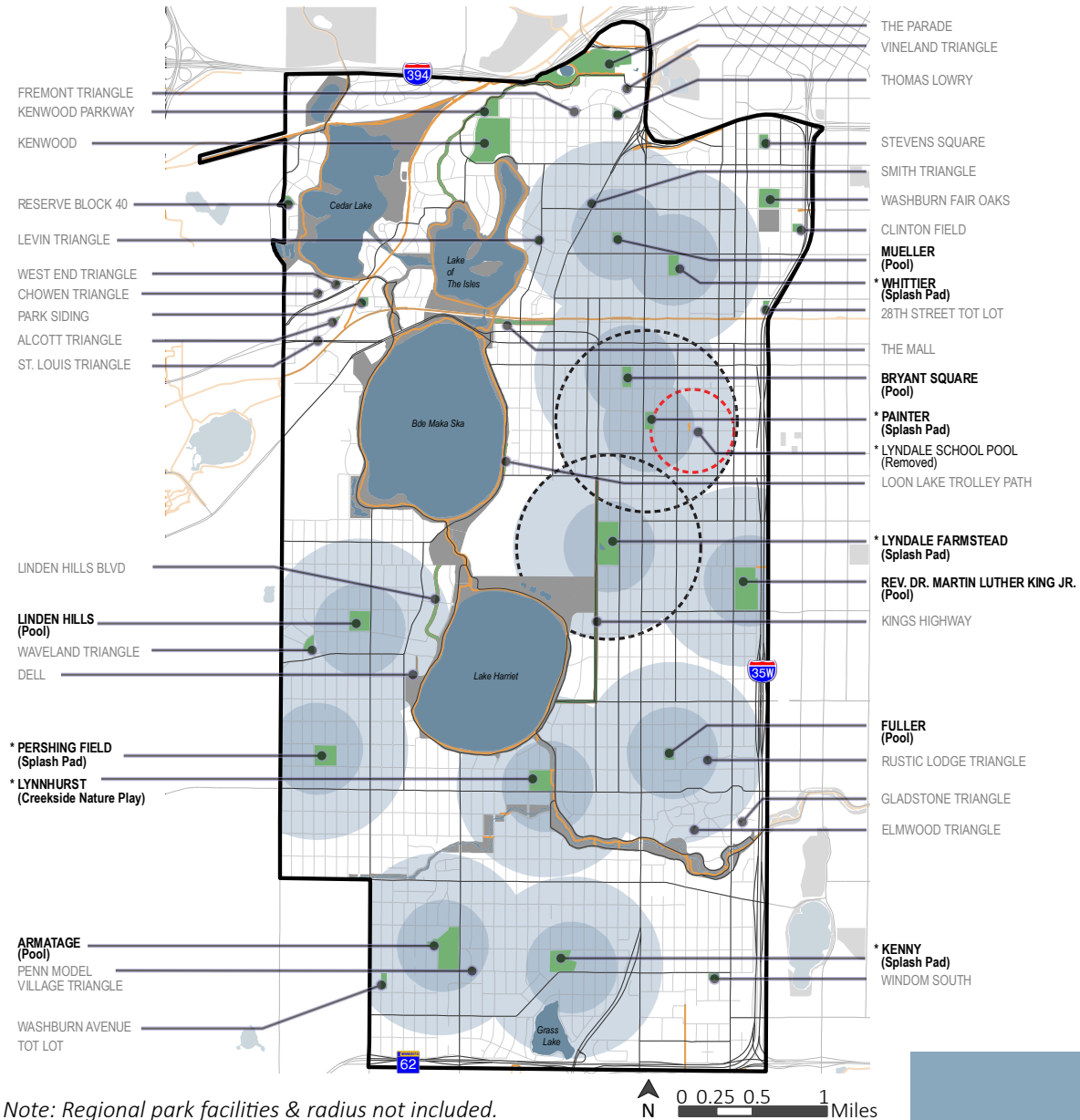
PARK SEARCH AREAS

In addition to several potential parks, the SW Park Plan process resulted in a recommendation to pursue the following park search areas:

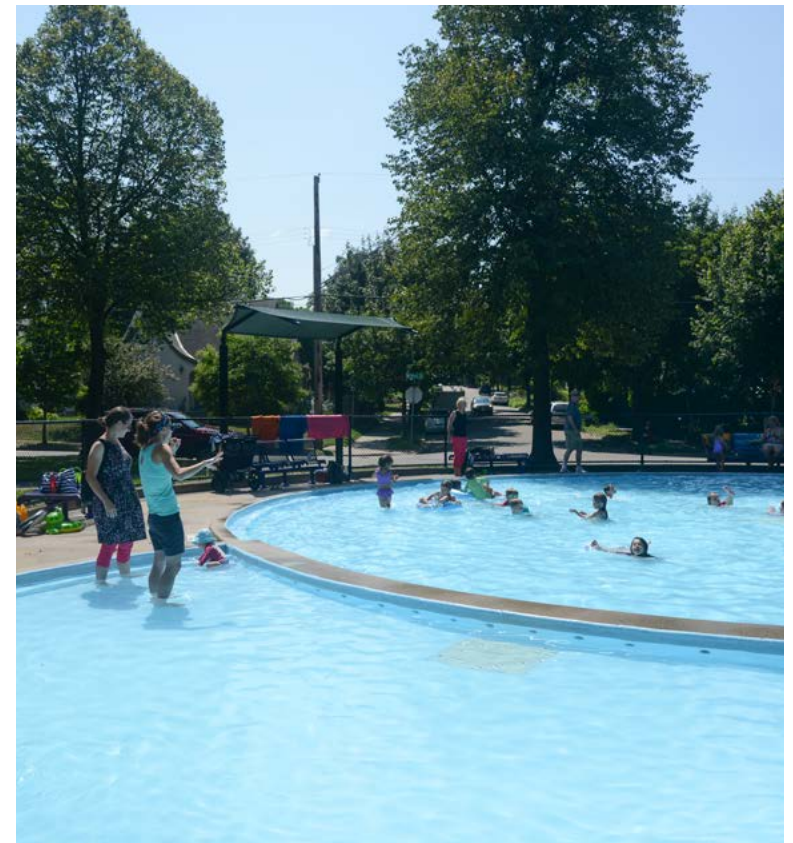
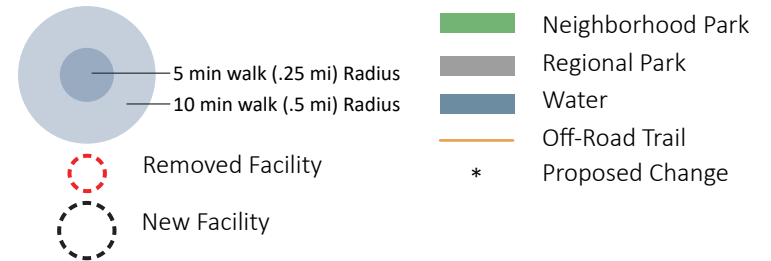
- A. Search area for a park and/or tot lot play area in the West Maka Ska neighborhood area, which has an increasing youth population and limited access to tot lots due to traffic and transit barriers.
- B. Search area for additional park space in the area of the Stevens Square/Whittier/Lowry Hill East neighborhoods which have an increasing density of rental properties without yards, resulting in limited access to green space and water.
- C. Search area for additional park space in the Windom neighborhood area which has limited access to green space due to traffic barriers.

A dog park search area was removed from this plan during final Board approval. In its place, adoption of amendment 39B added a dog park to Washburn Fair Oaks park.





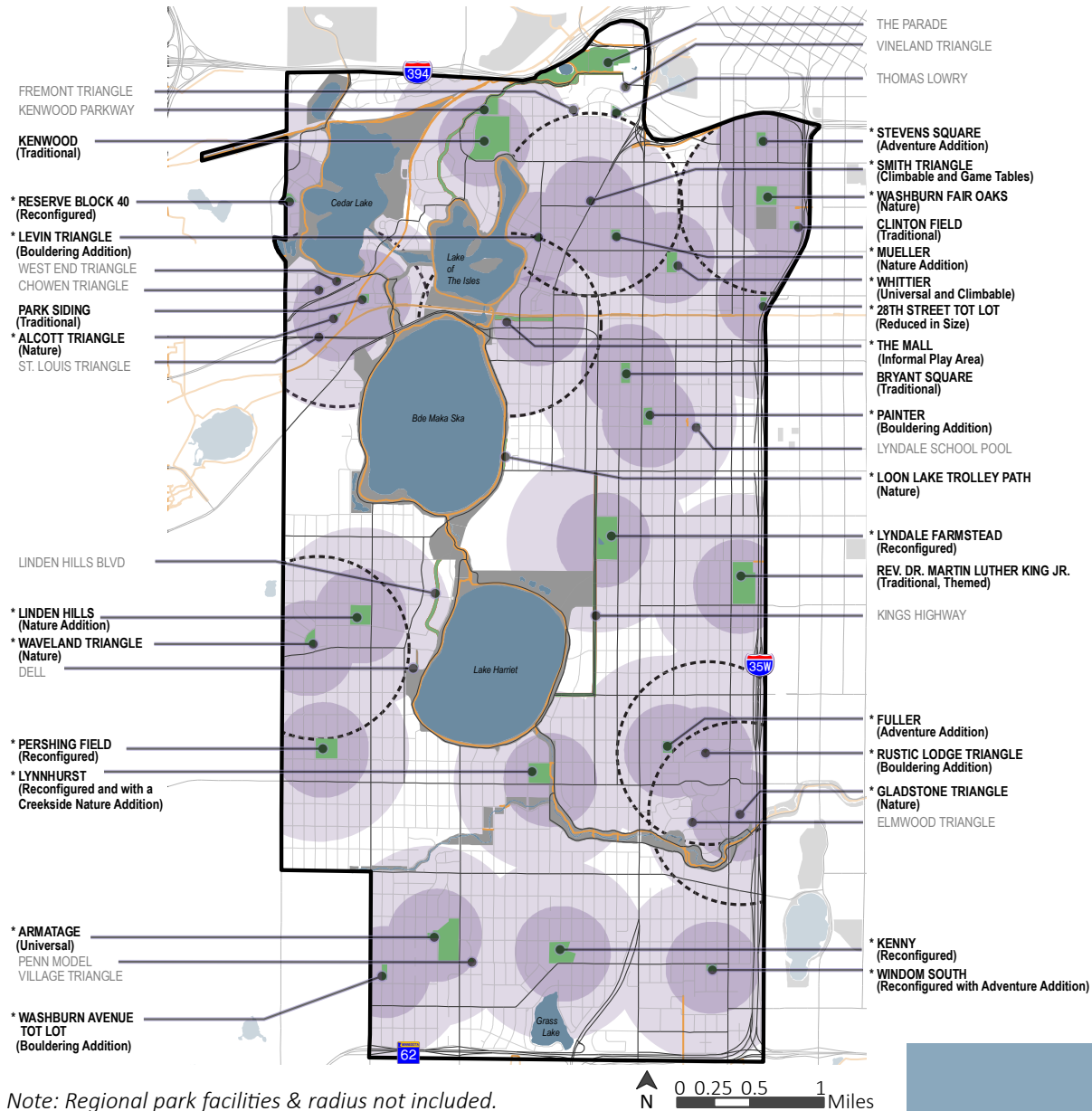
Parks in **bold** will have an aquatic facility



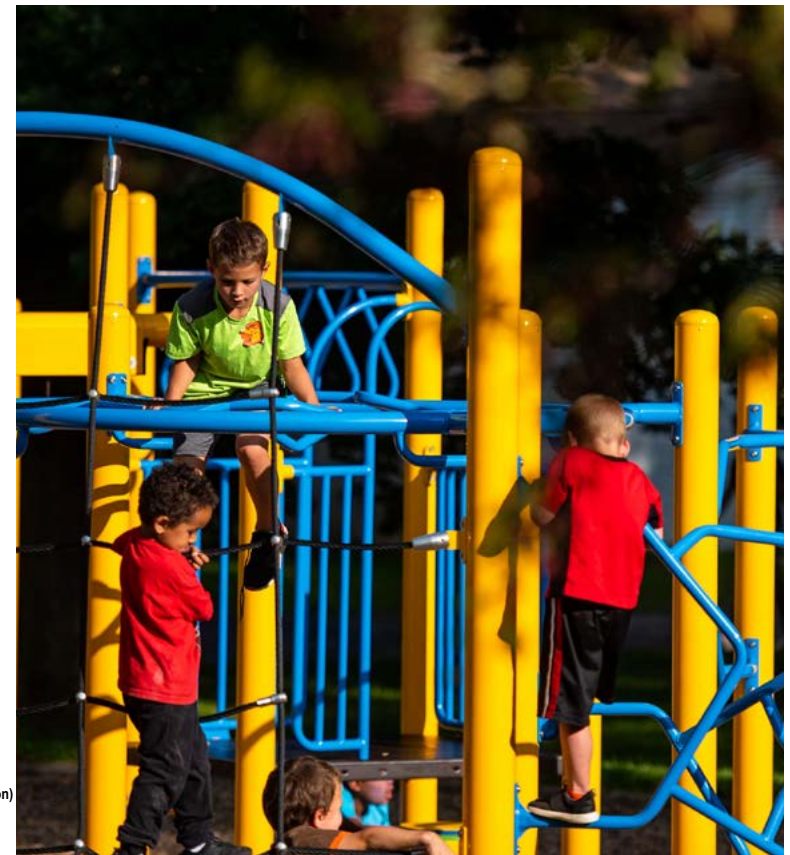
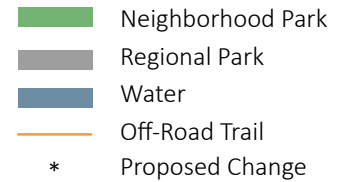
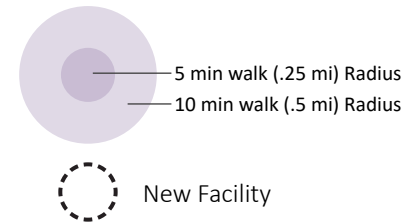
AQUATIC FACILITIES



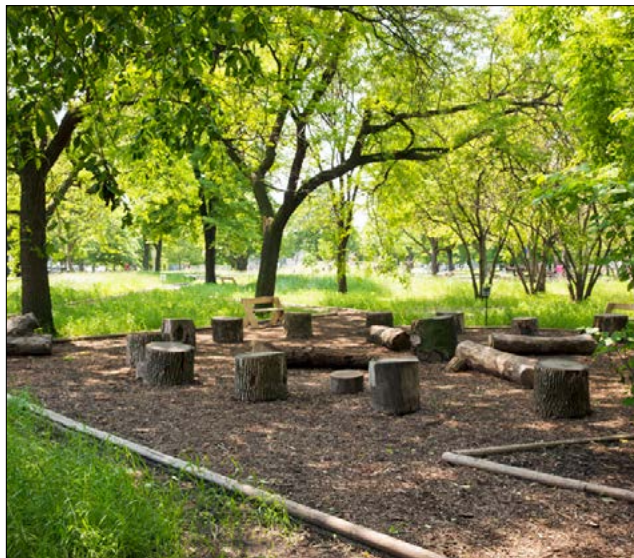
AQUATIC EXAMPLES



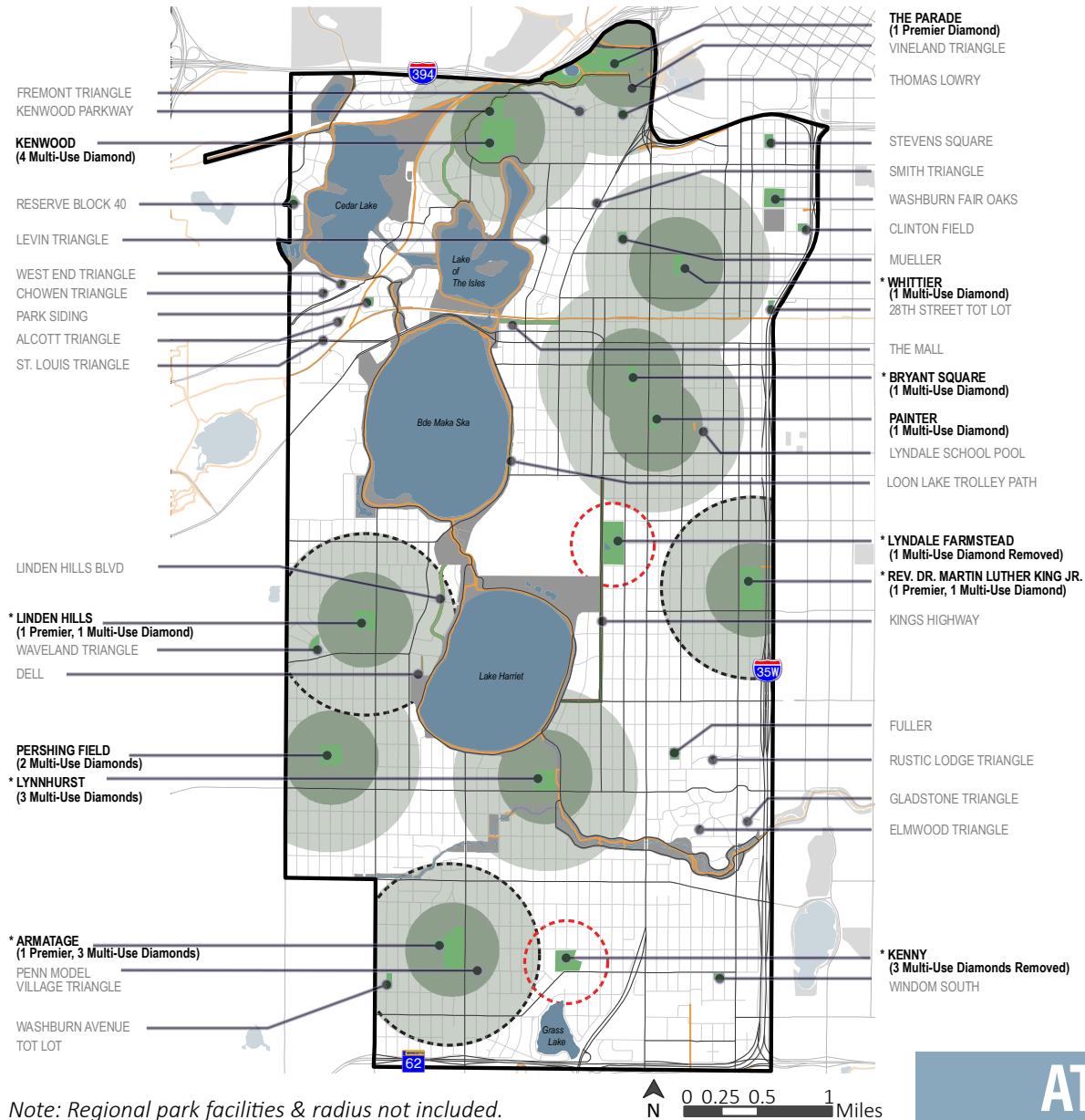
Parks in **bold** will have a play facility



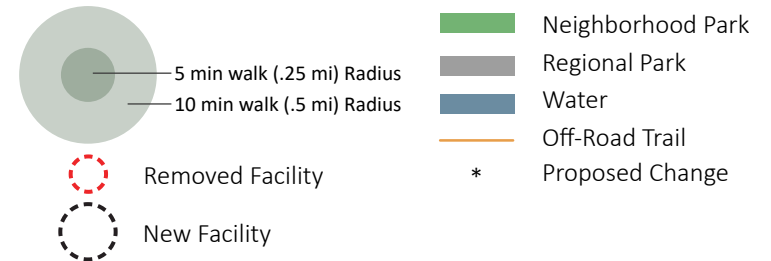
PLAY FACILITIES



PLAY EXAMPLES



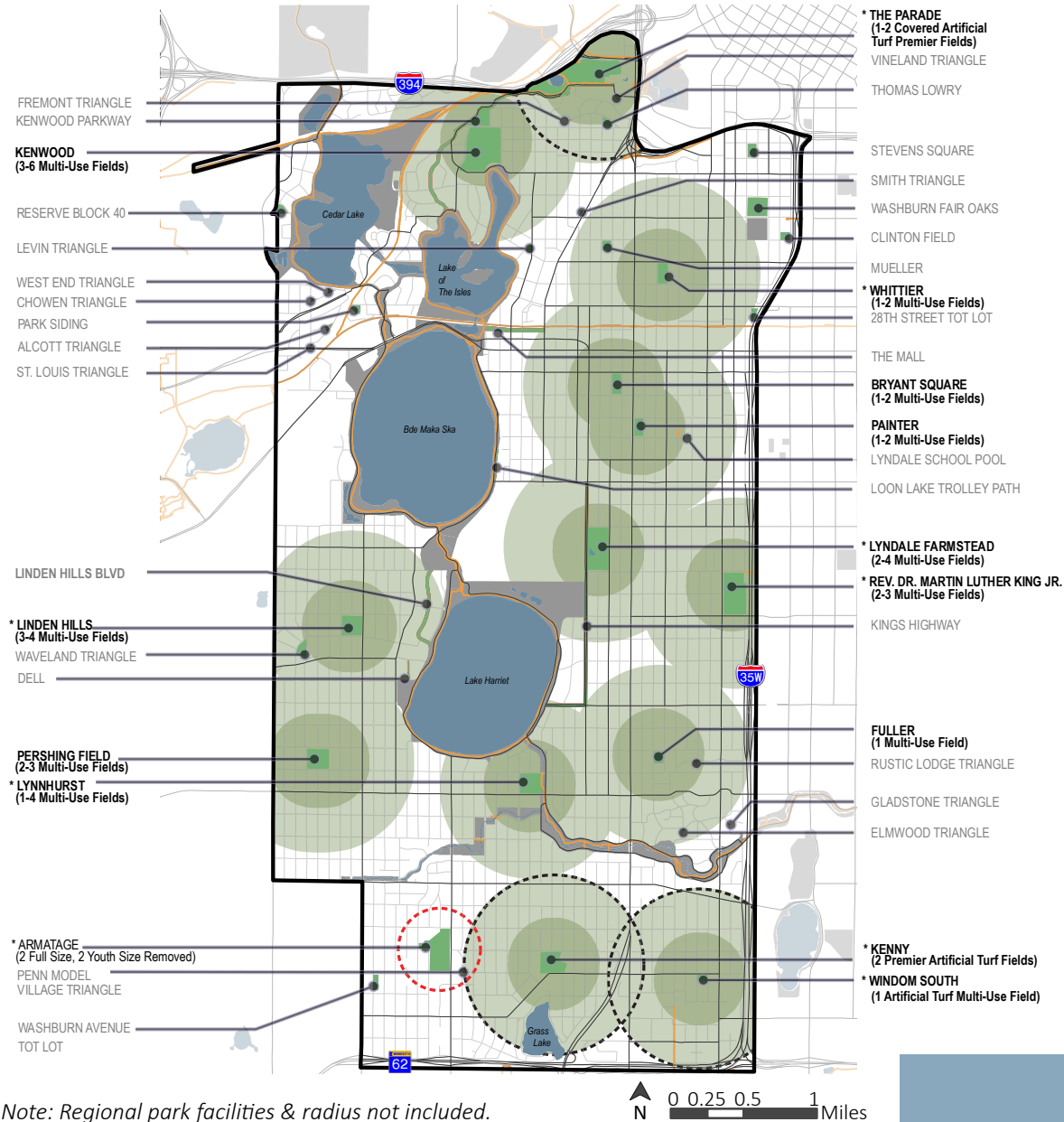
Parks in **bold** will have a diamond facility



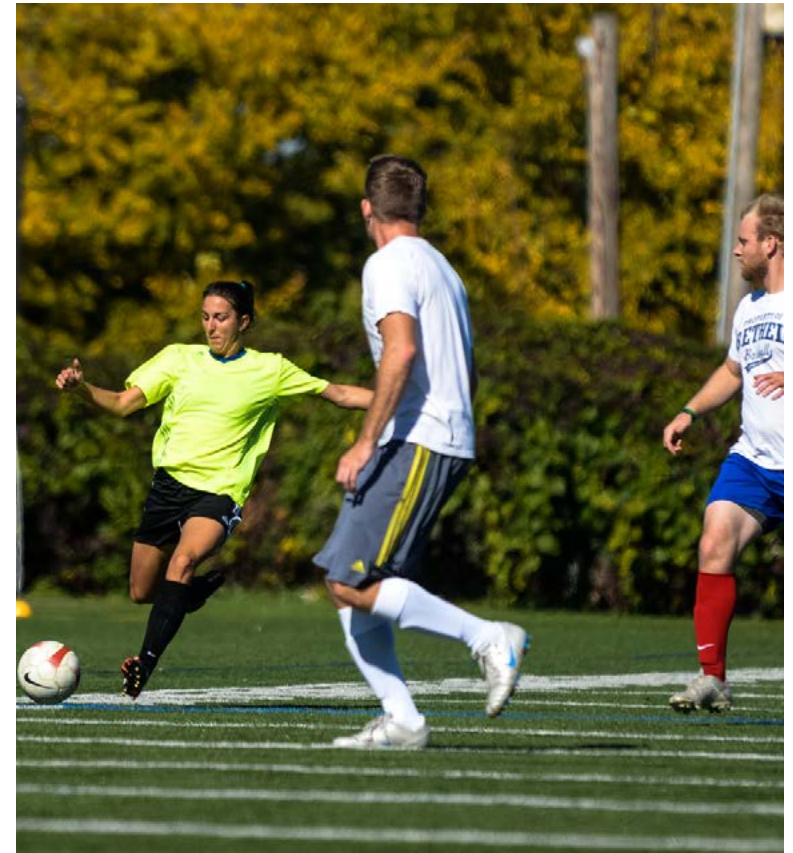
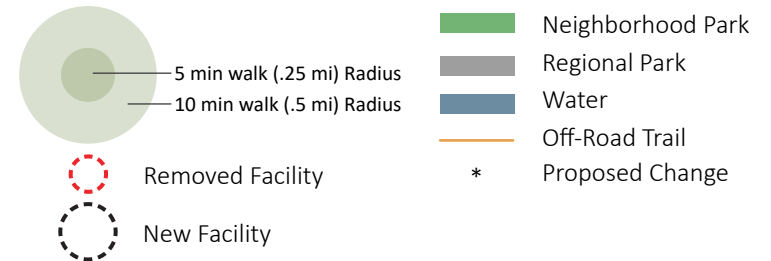
ATHLETIC DIAMOND FACILITIES



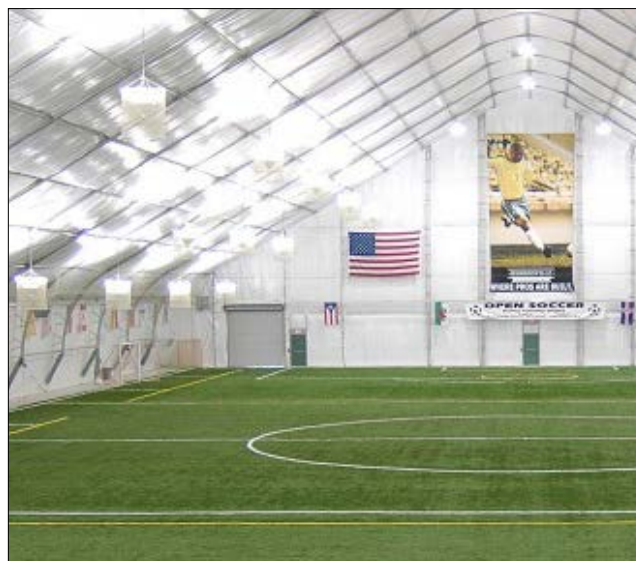
ATHLETIC DIAMOND EXAMPLES



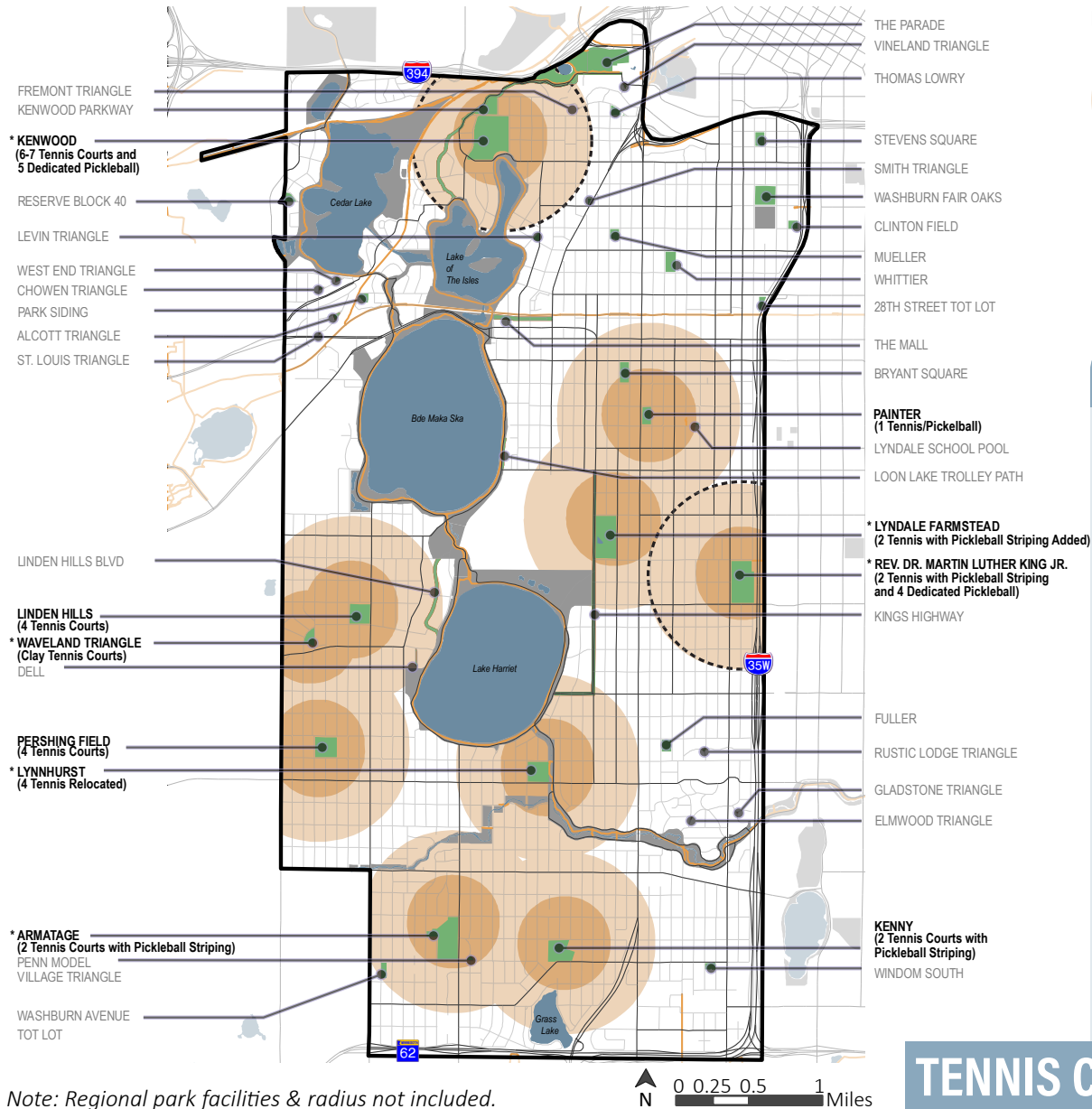
Parks in **bold** will have a field facility



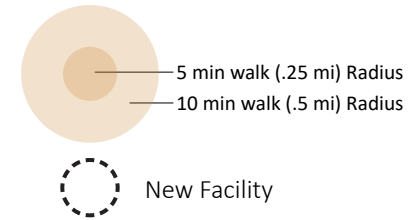
ATHLETIC FIELD FACILITIES



ATHLETIC FIELD EXAMPLES



Parks in **bold** will have a court facility



- Neighborhood Park
- Regional Park
- Water
- Off-Road Trail
- * Proposed Change

WHAT IS PICKLEBALL?

Pickleball is a paddle sport that combines elements of badminton, tennis, and table tennis. Pickleball has become increasingly popular over the past decade and there are currently only a few courts in the service area – striped on top of existing tennis courts. There are no dedicated pickleball courts in SW parks.

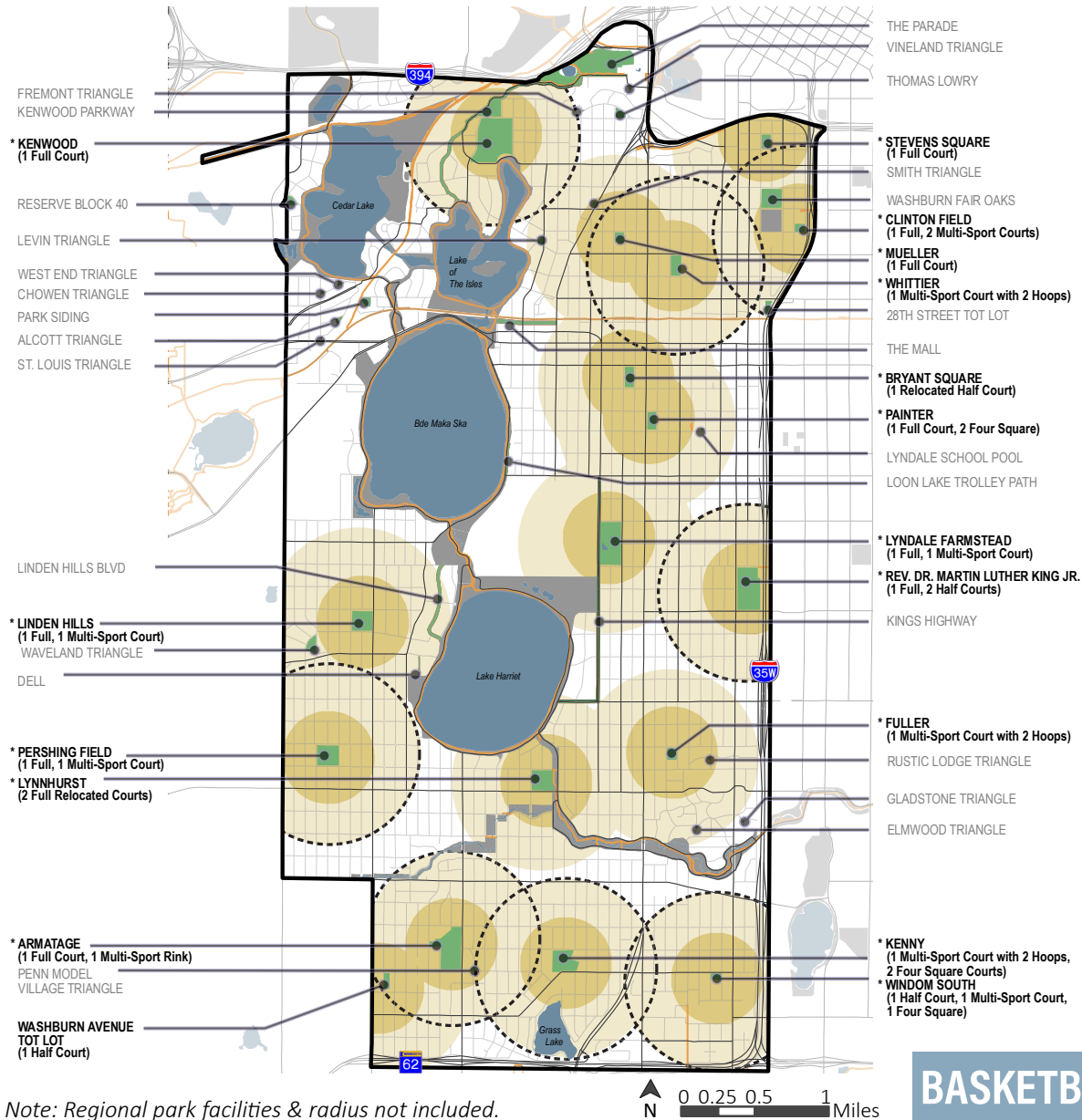
The social aspect of the game is appealing, particularly to retired senior populations, so it is beneficial to provide multiple, dedicated courts near one another for league play.

There is a bank of 5 new dedicated pickleball courts proposed in Kenwood Park, and a bank of four in Rev. Dr. Martin Luther King, Jr. Park.

TENNIS COURT AND PICKLEBALL FACILITIES



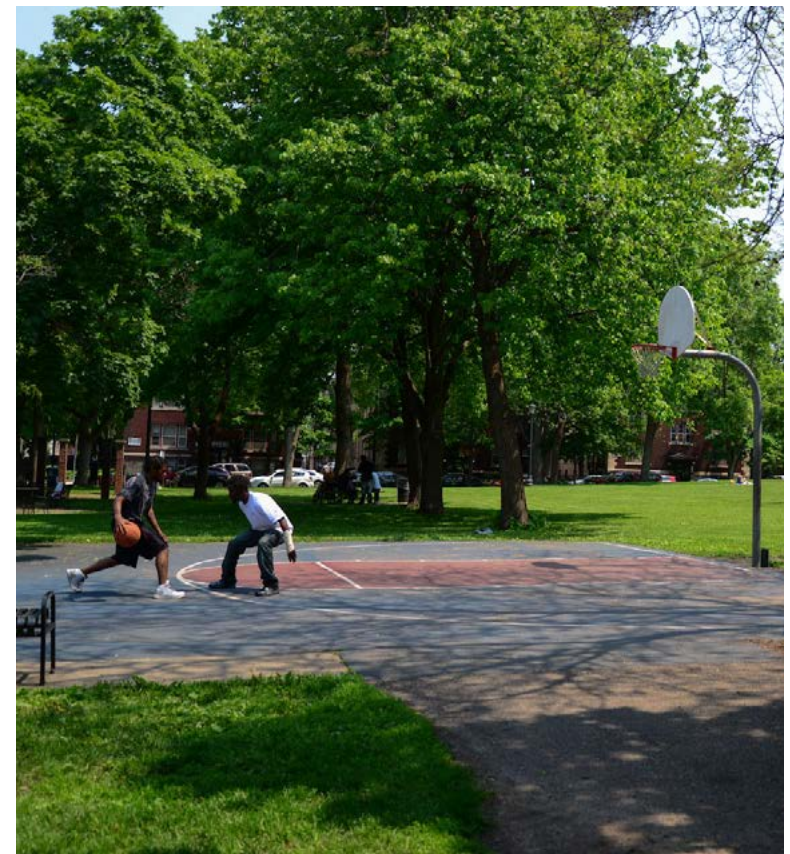
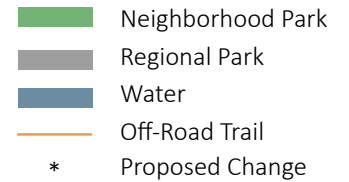
TENNIS COURT AND PICKLEBALL EXAMPLES



Note: Regional park facilities & radius not included.

Note: Multi-sport courts can accommodate futsal, bike polo, basketball, and other sports and activities.

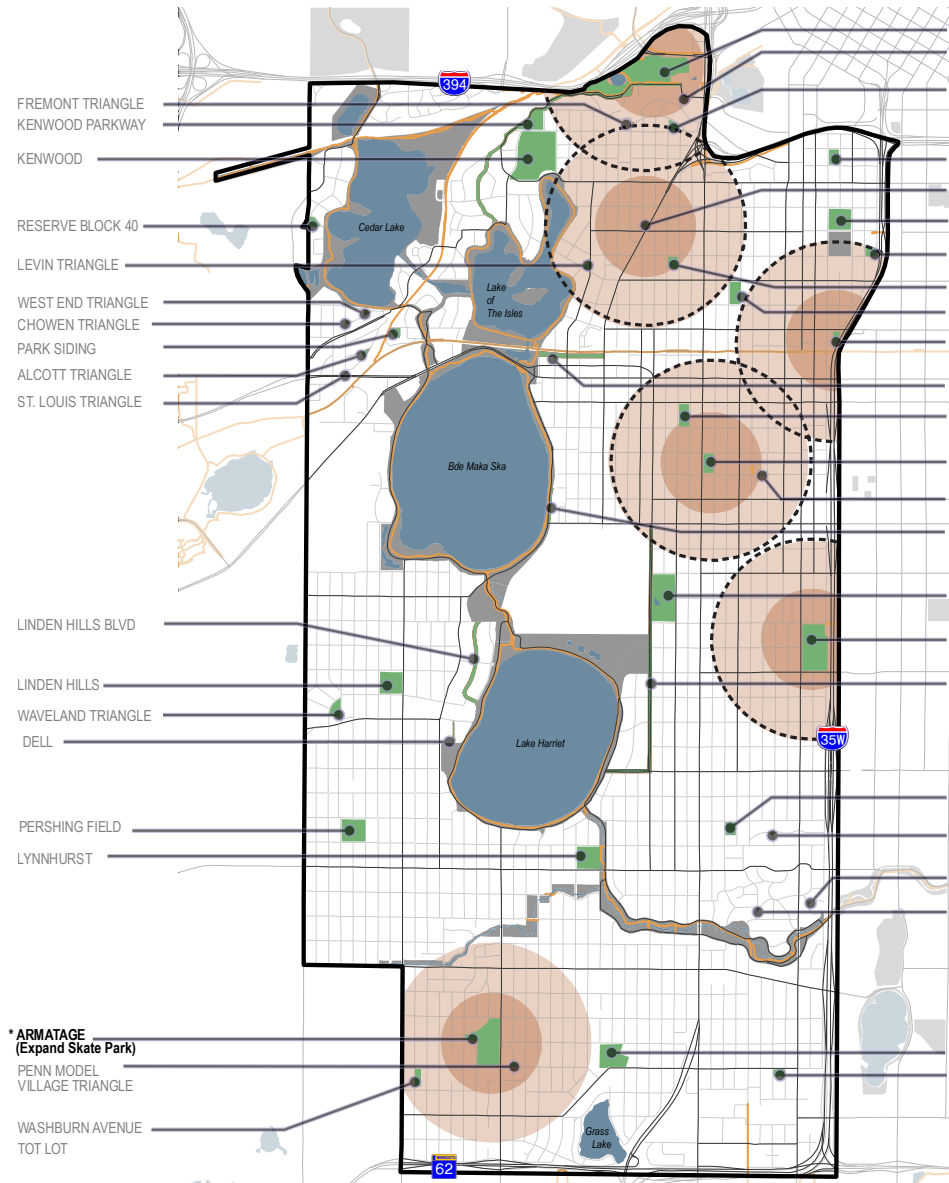
Parks in **bold** will have a court facility



BASKETBALL AND MULTI-SPORT COURT FACILITIES



BASKETBALL AND MULTI-SPORT COURT EXAMPLES



Note: Regional Park facilities & radius not included (ex: a skate park is proposed for the west side of Bde Maka Ska in that regional park master plan).

Note: Bike polo is included in the multi-sport court facilities map on page 50.

* **THE PARADE**
(Bike Skills Course)
VINELAND TRIANGLE

THOMAS LOWRY

STEVENS SQUARE

* **SMITH TRIANGLE**
(Skate Spot)
WASHBURN FAIR OAKS

CLINTON FIELD

MUELLER

WHITTIER

* **28TH STREET TOT LOT**
(DIY Skate)

THE MALL

BRYANT SQUARE

* **PAINTER**
(Skate Park)
LYNDALE SCHOOL POOL

LOON LAKE TROLLEY PATH

LYNDALE FARMSTEAD

* **REV. DR. MARTIN LUTHER KING JR.**
(Bike Playground/Pump Track)

KINGS HIGHWAY

FULLER

RUSTIC LODGE TRIANGLE

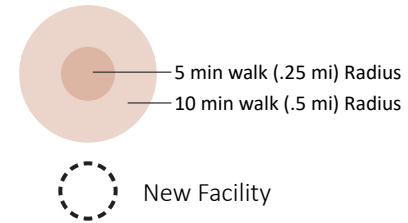
GLADSTONE TRIANGLE

ELMWOOD TRIANGLE

KENNY

WINDOM SOUTH

Parks in **bold** will have a skate park/all-wheel/bike skills facility



- Neighborhood Park
- Regional Park
- Water
- Off-Road Trail
- *

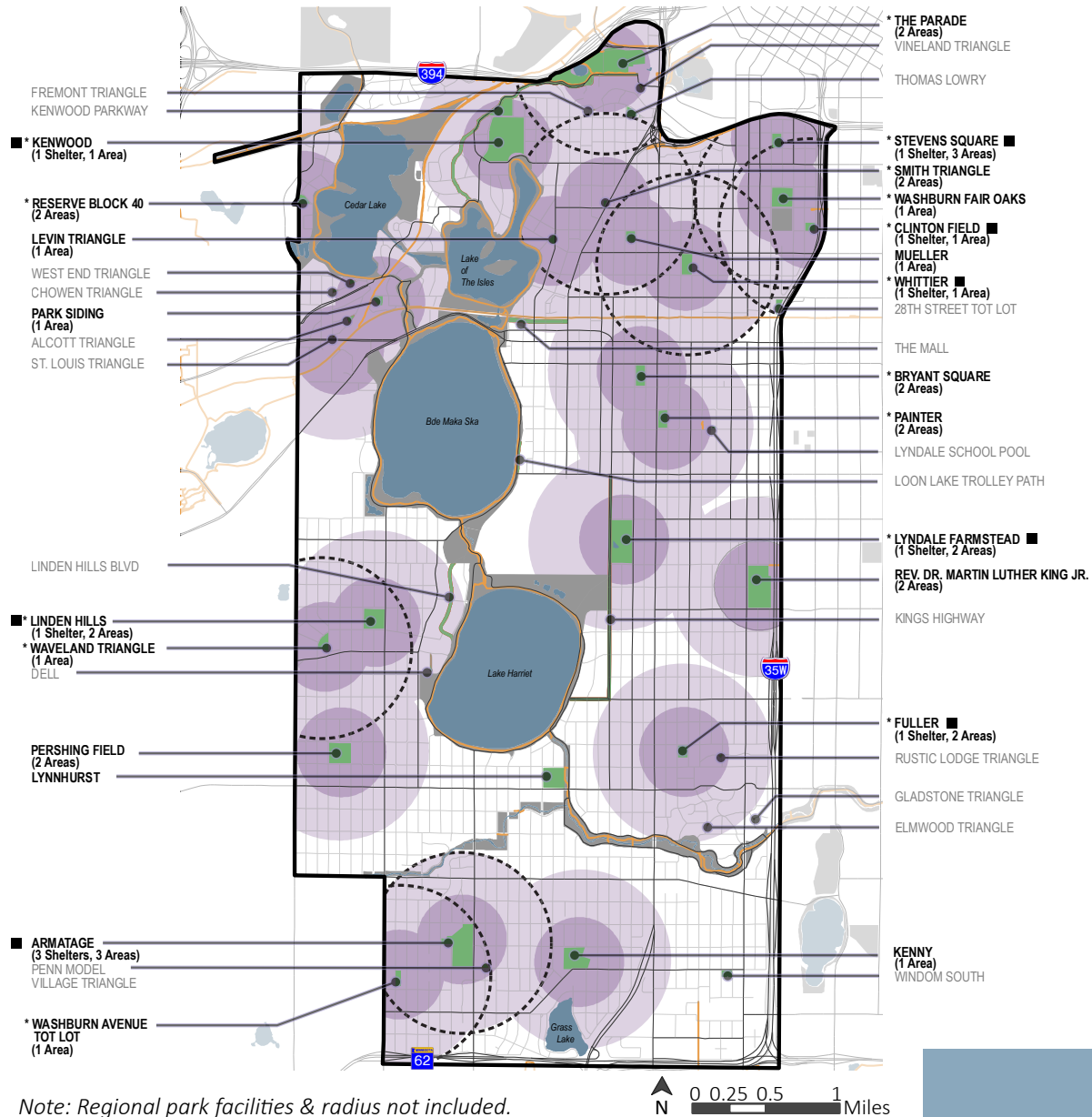
Proposed Change



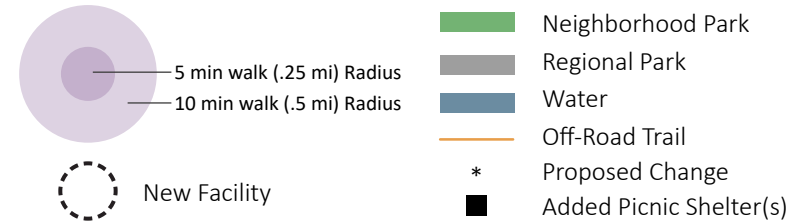
SKATE PARK/ALL-WHEEL/BIKE SKILLS FACILITIES



SKATE PARK/ALL-WHEEL/BIKE SKILLS EXAMPLES



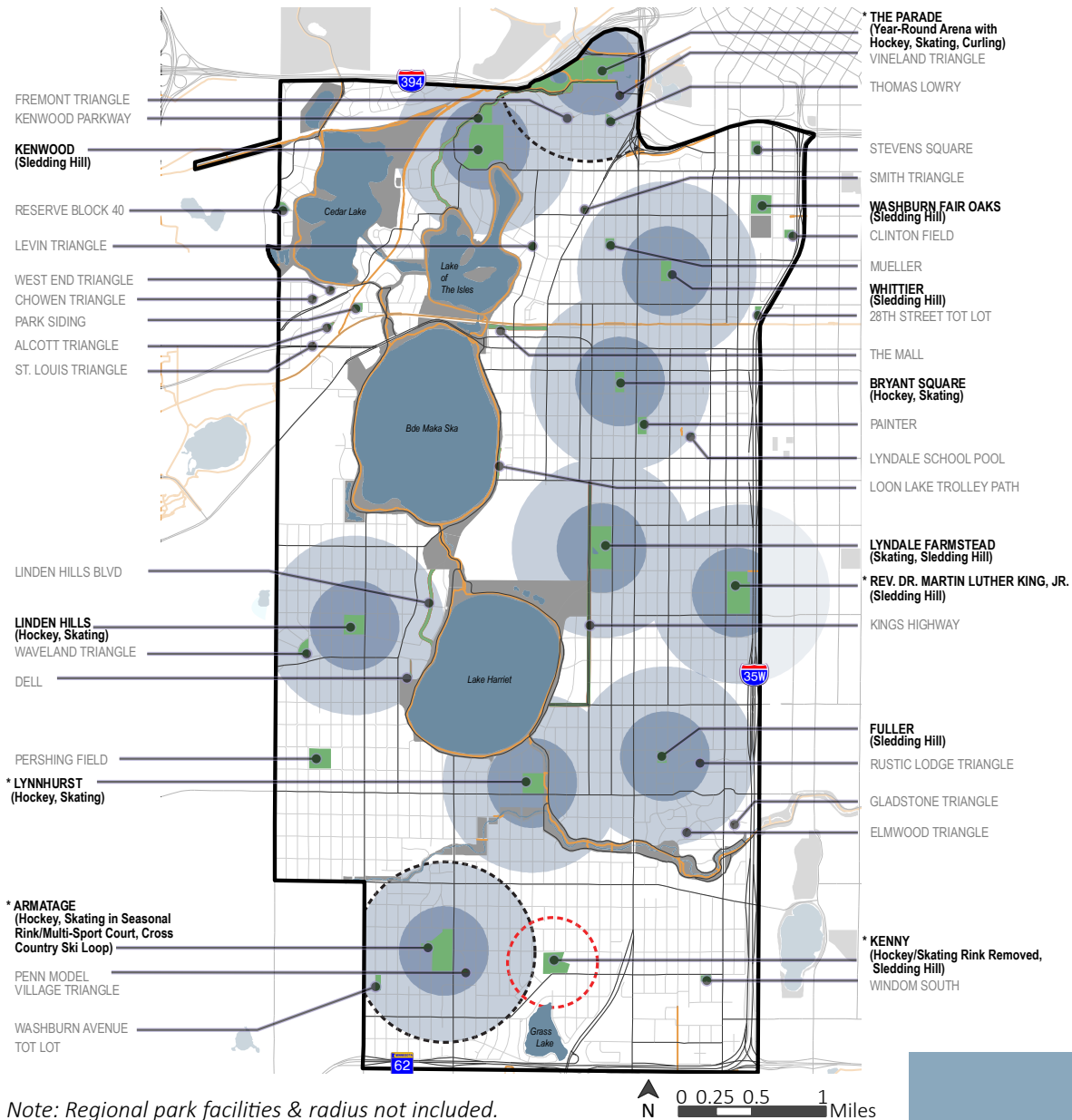
Parks in **bold** will have a picnic shelter or designated picnic area facility



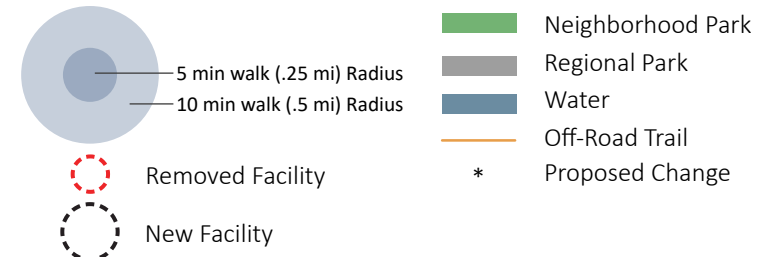
PICNIC FACILITIES



PICNIC EXAMPLES



Parks in **bold** will have a winter activity facility



WINTER ACTIVITY FACILITIES



WINTER ACTIVITY EXAMPLES