



Minneapolis Park & Recreation Board

Update: Refuge Space to People Currently Experiencing Homelessness July 1, 2020

Al Bangoura, Superintendent



Update Refuge Space to People Currently Experiencing Homelessness

Customer Service Feedback

Open Time on 6/17 MPRB received:

- 876 comments for open time.
- 863 comments about Powderhorn encampment.
- 772 of the comments came as a form letter supporting the encampment at Powderhorn and listed 8 demands.
- 79 other comments were in support of the encampment.
 - although 5 of them made it very clear not as a long-term solution
- 8 of the comments were opposed to the encampment.
- 3 of the comments were neutral or were sent as observations.

Since 6/17 MPRB received:

- 224 comments about the homeless encampments.
- 114 comments were received by Customer Service.
- 110 comments were received as open time submissions.
- 50 in support of the encampments.
 - Tone has changed from last week: many submissions in favor of the encampments addressed the short-term needs of the people at the encampments, and the need for long-term housing solutions
- 160 were opposed to the encampments.
- 14 of the comments were neutral or were sent as observations.



Minneapolis Park & Recreation Board

Overview of Current Encampments

Jeremy Barrick, Assistant Superintendent of Environmental Stewardship



Update Refuge Space to People Currently Experiencing Homelessness

Overview of Current Encampments

OVERVIEW

- June 17th MPRB Board of Commissioners passed Resolution 2020-253 authorizing the MPRB to Provide Refuge Space to People Currently Experiencing Homelessness.
- Currently, there are 35 known encampments currently on MPRB Property.
- The largest encampment is located at Powderhorn Park with 400 tents.
- The remaining encampments range from single tents to about 15 tents per location.
- 26 sites have 3 tents or less, or 74% of the encampments.
- The encampments of the greatest concern are Powderhorn, Elliot and The Commons because of the reports of drug use, violence, number of police calls and park neighbors who are feeling unsafe due to the crime and other illegal activities that are occurring in the parks.



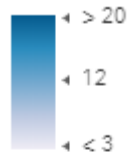
Update Refuge Space to People Currently Experiencing Homelessness

Overview of Current Encampments

Locations of Encampments & Biffs Locations

Encampment Locations

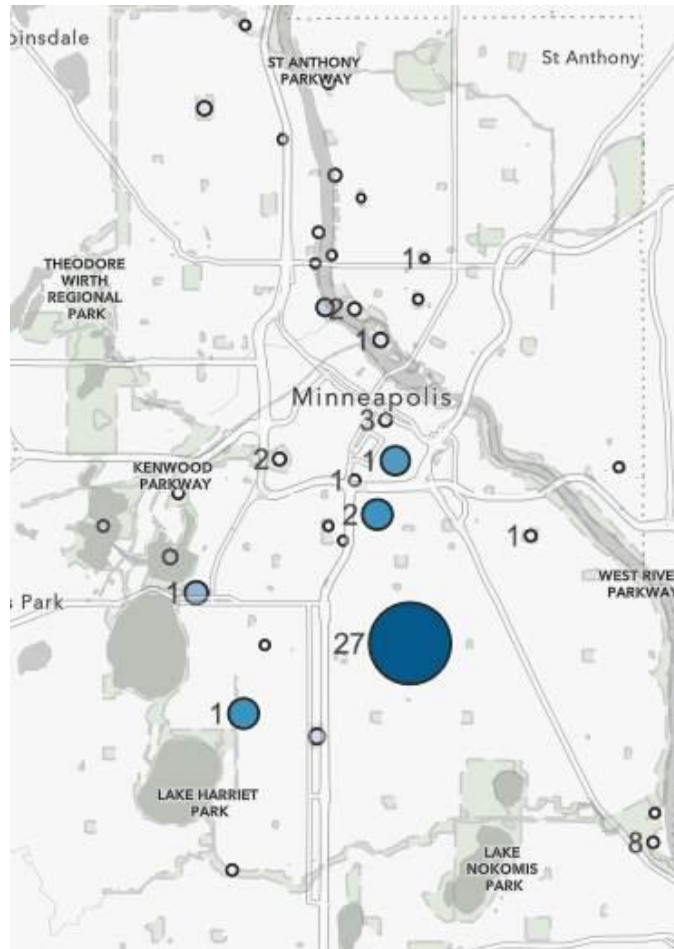
Number of Tents



Number of Tents



MPRB Locations



Park Name	Tents
Powderhorn Park	405
Lyndale Farmstead Park	15
Peavey Field Park, Frank H.	15
Elliot Park	14
The Mall Park	10
W River Pkwy @ Plymouth	6
Rev. Dr. Martin Luther King, Jr. Park	5
Folwell Park	4
Lake of the Isles Park	4
Nicollet Island Park	4
Boom Island Park	3
Downtown East Commons	3
Edgewater Park	3
Loring Park	3
Shingle Creek Park	3
Xcel Field Park	3
Cedar Lake Park	2
Creekview Park	2
Franklin Steele Square	2
Kenwood Park	2
Matthews Park, Charles E.	2
Minnehaha Creek Parkway (West of 35W)	2
Minnehaha Regional Park	2
North Mississippi Regional Park	2
Orvin Ole Olson Park	2
Clinton Field Park	1
Minnehaha (Wabun)	1
Painter Park	1
Perkins Hill Park	1
Sheridan Memorial Park	1
St Anthony Park	1
Tower Hill Park	1
W River Pkwy @ Broadway	1
Washburn Fair Oaks Park	1
Webber Park, Charles C.	1
Bottineau Field Park	
Logan Park	



Update Refuge Space to People Currently Experiencing Homelessness

Overview of Current Encampments

MPRB Staff Time – Powderhorn Park

- Parkkeepers spend about 15 labor hours daily - picking up trash on the ground and in the street, moving trash carts and other maintenance related tasks. (5 People x 3 hours)
- A Crew Leader spends 3 hours per day on site Monday through Friday.
- Parkkeepers spend approximately 4 hours of overtime daily to lock up the bathroom facilities.
- Parkkeepers clean bathrooms at Powderhorn park once a day. MPRB staff provide cleaning supplies and equipment to volunteers who monitor bathrooms throughout the day.
- MPRB staff are encountering unsafe situations in the evening with locking up the bathrooms.
- Biffs our portable restroom and hygiene station provider, is requiring either police or staff support to service calls as encampment residents are going through their vehicles while servicing the units. Biffs has indicated that they will no longer be able to provide service to units if additional support is not provided.
- First Aid tent staff have left the site because they fear for their safety.

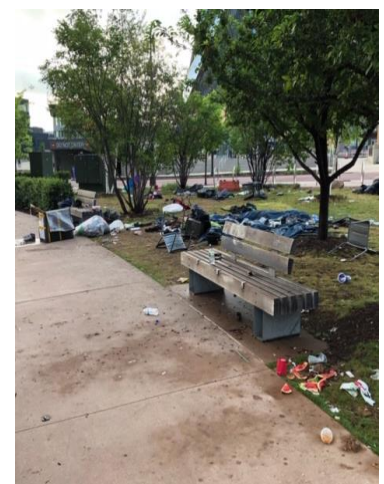


Update Refuge Space to People Currently Experiencing Homelessness

Overview of Current Encampments

Challenges for MPRB Staff

- Staff have noted that restroom locks have been broken off or jammed to prevent staff from locking up restrooms at designated times.
- Where stand alone bathroom facilities are open, staff have noted that bathroom electrical outlets have been rewired so encampment residents can run power supply to charge phones.
- Peavey Park has approximately 15 tents on site, and cars have been driving into the park to park next to their tent.
- Property damage to benches and trees
- Increased concentrated biohazards
- Safety Concerns





Minneapolis Park & Recreation Board

Crime & Safety Report

Chief Ohotto



Update Refuge Space to People Currently Experiencing Homelessness Crime & Safety Report

Parks are not designed or operated in a manner that supports human habitation.

MPRB Ordinance PB2-33 Park Hours, along with other ordinances and rules, are important crime control measures. These measures have been suspended due to COVID-19 related executive orders and MPRB Resolution 2020-253.

Since the “refuge” resolution, there have been significant crime and safety challenges at several encampments, especially at Powderhorn Park.

- June 1 – June 17 (17 days): Powderhorn Park had **15** 911 incidents
- June 18 – June 29 (12 days) Powderhorn Park had **45** 911 incidents



Update Refuge Space to People Currently Experiencing Homelessness Crime & Safety Report

June 18th :

- 20-163354 Sexual Assault @ The Commons Park: victim was sexually assaulted in a tent. Park Police later identified and arrested a suspect.
- 20-163324 Person with a Weapon @The Mall: males were in physical fight. One attacked another with a hatchet after confronting the person who stole his bicycle at the encampment.

June 20th:

- 20-164941 Domestic Assault @ Powderhorn Park (west camp). Park officers were dispatched for a woman whose chest hurt from fighting her husband.

June 21st:

- 20-165769 Overdose @ Powderhorn (east camp). Officers assisted EMS with a patient who had stopped breathing after ingesting fentanyl.



Update Refuge Space to People Currently Experiencing Homelessness Crime & Safety Report

June 24th:

- 20-168547 Person with a Gun @ Powderhorn (east camp): Remark "AT THE POWDERHORN SANCTUARY ON E SIDE OF THE PARK - CLR RPTG GROUP OF "AT LEAST" 5 RUNNING AROUND W. BATS AND GUNS." Upon arrival all the suspects were GOA and the victim received treatment from the camp's medical tent.

June 25th:

- 20-169350 Recovered Stolen Motor Vehicle @ Powderhorn Park: Park officers went to possible stolen vehicle parked on park property. Officers saw it was occupied by 3 people. Officers became surrounded; vehicle was towed. The vehicle had needles everywhere and smelled like vomit.
- 20-169490 Assault @ Powderhorn Park: Park officers responded to an ASLT call that possibly occurred at Powderhorn Park. The male was located on 31st Street. The caller stated he came from the park area. Victim was possibly hit in the head with an object.



Update Refuge Space to People Currently Experiencing Homelessness

Crime & Safety Report

June 26th:

- 20-170347 2nd Degree Assault @ The Mall encampment: Park officers responded to a fight call. Officers determined that one assaulted another with a crowbar, over a tent. The suspect admitted to the assault, was arrested, and the crowbar was recovered.

June 27th:

- 20-170624 2nd degree domestic assault and warrant @ Powderhorn (east camp): Park officers were dispatched to a possible assault with a weapon. Upon arrival, Park officers arrested one male for threatening the victim with a knife. The arrested person also had a confirmed felony sexual assault warrant.



Update Refuge Space to People Currently Experiencing Homelessness Crime & Safety Report

June 28th:

- 20-171382 Sexual Assault @ Powderhorn Park: Sexual assault at approximately 0245. MPD 3rd Pct. officers responded to this call and arrested the suspect at a nearby location. An adult female was assaulted by an adult male. Park officers later booked the arrested person at Hennepin County Jail.
- 20-171202 Crisis Intervention @ Powderhorn (east camp): Park officers were dispatched to a suicidal male. The callers did not want police response and were upset when the ambulance would not arrive until the situation was under control. The patient was uncooperative with the on-site social workers/advocates and he walked away from them. Park officers followed him on foot for two blocks. Park officers did a good job talking the patient down and getting him to get into the ambulance. Later, the patient became aggressive again and swung at a paramedic.

June 29th:

- 20-172429 Sexual Assault @ Washburn-Fairoaks Park: Park officers took a report from a hospitalized victim who was sexually assaulted over the weekend. The victim had been sleeping in the park overnight when she was assaulted.



Minneapolis Park & Recreation Board

Capacity Analysis for Encampments in Minneapolis Parks

Michael Schroeder, Assistant Superintendent of Planning



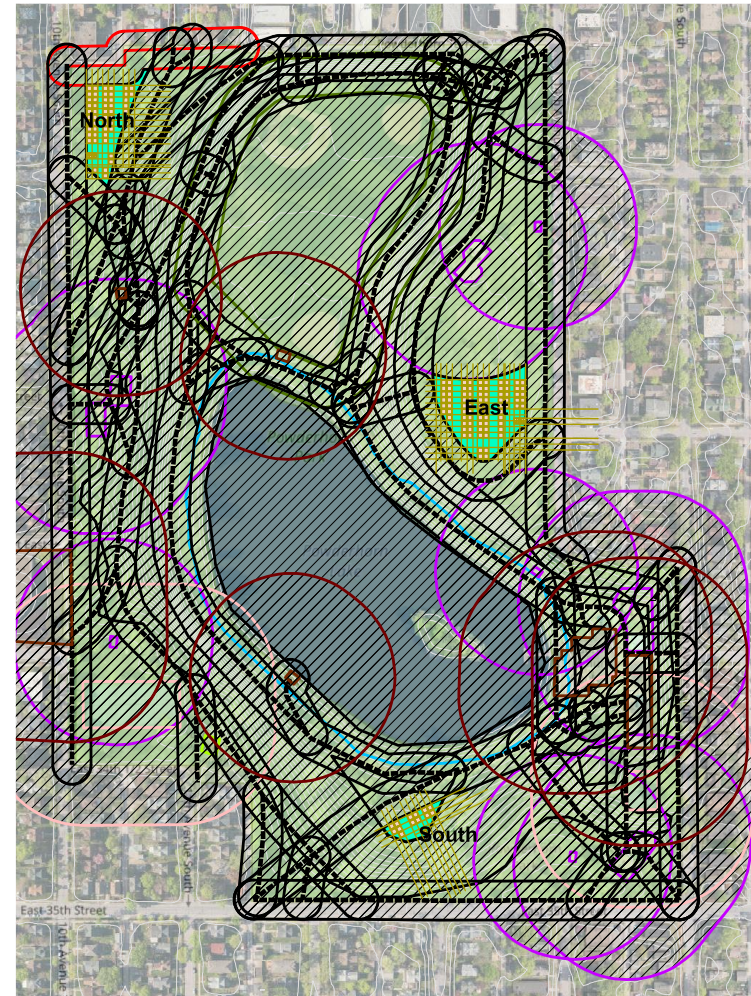
Capacity Analysis for Encampments in Minneapolis Parks

- Resolution 2020-253 includes a recital indicating the MPRB exists to provide places and recreational opportunities for all people to gather, celebrate, contemplate, and engage in activities to promote health, well-being, community, and the environment
- Recognizing the same resolution allows for encampments, staff characterized buffers around park assets allowing for the safe, secure and comfortable use of a park by Minneapolis residents and visitors
- Staff further recognized the need to respect environmental sensitive features of a park
- Mapping buffers and environmentally sensitive features allowed for any gaps in the geography of a park to be considered for an encampment site
- At Powderhorn Park, the “gaps” are reasonably aligned with the current locations of the encampments
- The same methodology can be applied to any park in the Minneapolis park system
- Nuance can be achieved through close review; for instance, if no areas suitable for an encampment result, staff can assess closing a trail or a picnic shelter, for example, in order to reveal a location for an encampment



Capacity Analysis for Encampments in Minneapolis Parks

- At Powderhorn Park, the “gaps” are reasonably aligned with Nuance can be achieved through close review; for instance, if no areas suitable for an encampment result, staff can assess closing a trail or a picnic shelter, for example, in order to reveal a location for an encampment
- Buffers for land uses surrounding the park have yet to be determined
- Nuance can be achieved through close review; for instance, if no areas suitable for an encampment result, staff can assess closing a trail or a picnic shelter, for example, in order to reveal a location for an encampment



Powderhorn Park