

PARKS FOR ALL

A VISION FOR THE NEXT DECADE OF
MINNEAPOLIS PARKS & RECREATION



PARKS FOR ALL: MPRB 2021 COMPREHENSIVE PLAN

Minneapolis Park and Recreation Board

CAC MEETING #2 | FEBRUARY 6, 2019

Comprehensive Plan

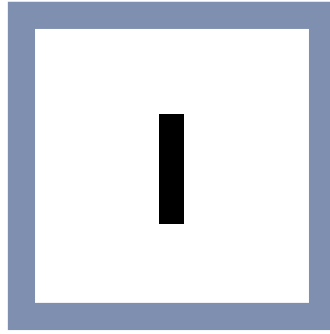
Minneapolis Park & Recreation Board



2007 – 2020

Approved October 17, 2007

Our current
Comprehensive Plan runs
through 2020. We need a
new plan starting in 2021.



Welcome and Intros

PARKS FOR ALL CAC #2

Agenda

1. Welcome and Overview
2. Role of Community Advisory Committee
3. Group Agreement
4. Project Overview
5. Racial Equity
6. Park Innovations
7. Data Jam
8. Public Open Time
9. Next Steps and Evaluation
10. Adjourn

INTRODUCTIONS

- Name, who appointed you

SEED BED

- What questions are rising up for you?
- What concerns do you have?
- What bright ideas do you have?
- What seeds do you want to plant for future meetings?

2

Role of the CAC

CAC ROLE

The appointed CAC for the 2021 Parks for All Comprehensive Plan shall:

- Become knowledgeable about the MPRB Comprehensive Plan and process
- Understand and represent the park and recreation needs of the community and park visitors
- Act as community liaisons for the project
- Help identify communities, organizations, user groups, populations and others that should be Consulted in the engagement process
- Provide feedback on a draft plan
- Help identify values, strengths and needs within the Minneapolis Park system and within their communities
- Provide insight on the long-term policy direction of MPRB
- Report back to appointers or appointing bodies, as requested, on the plan process, information presented, and possible recommendations
- Engage in working groups and subcommittees as needed (keep in mind tonight)

3

Group Agreement

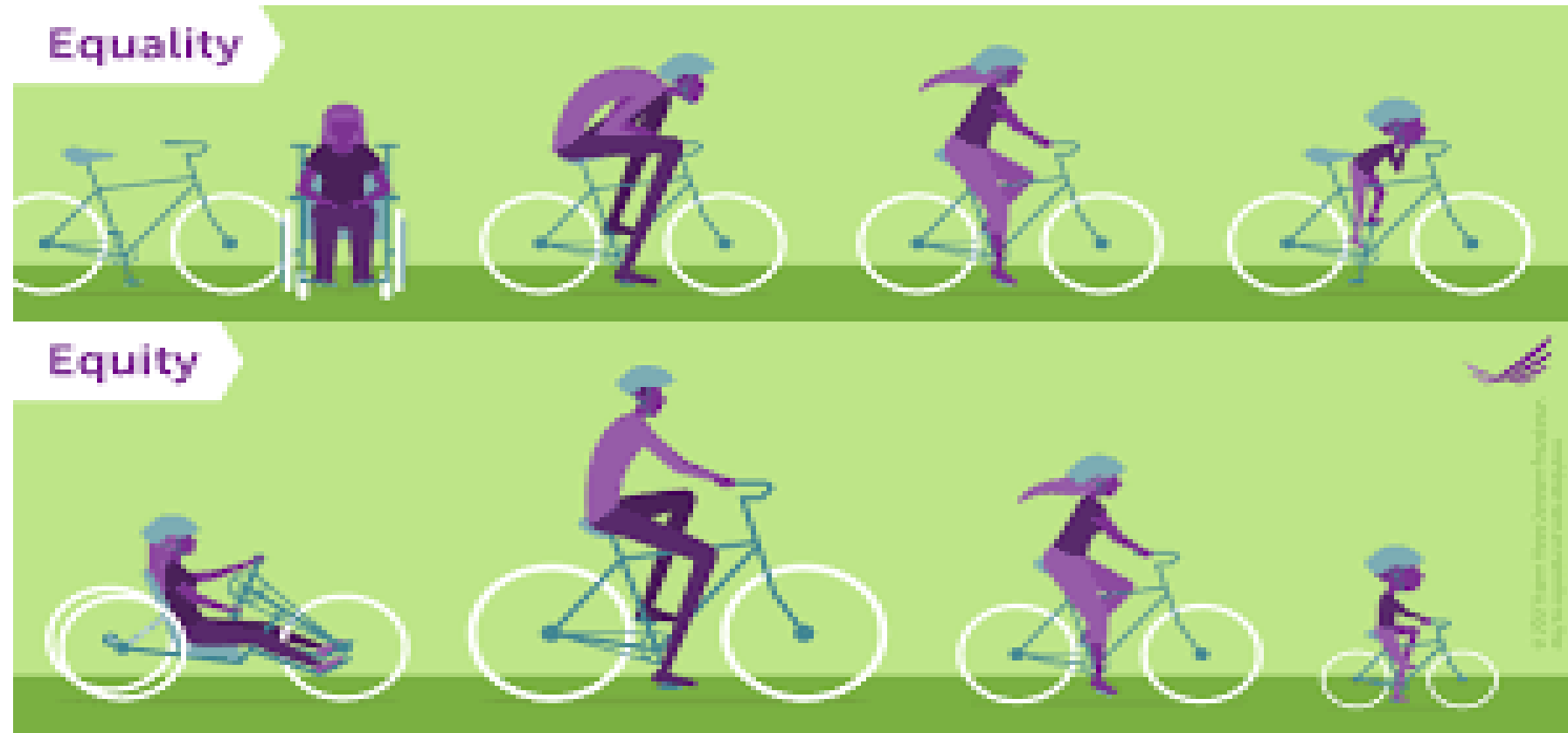
GROUP AGREEMENT

1. Speak from your own experience
2. Stay on task
3. Value diverse perspectives
4. Step up, step back
5. Cells phones on silent, step away for calls
6. One mic: Be present, one conversation, respect the speaker, actively listen
7. Assume good intentions
8. Always attend and be present
9. Challenge yourself
10. Speak up (and let us know if you can't hear)
11. Ask questions
12. Be open to learning
13. Create and hold a welcoming space

4

Racial Equity + MPRB

Equality vs. Equity



MPRB RACIAL EQUITY ACTION PLAN GOALS

- A. MPRB is committed to creating/developing/fostering a culture that values and advances racial equity.
- B. Minneapolis residents view the MPRB as an effective and inclusive government that engages all communities.
- C. MPRB workforce reflects the diversity of community across the breadth and depth of the organization.
- D. MPRB investments in contracting and procurement benefit our diverse community.
- E. The MPRB provides programs and services that are responsive and reflective of community needs.

WALL OF PARK EQUITY

What does an equitable park and rec system look like to you?

5

Parks for All Overview

WHAT IS THE MPRB COMP PLAN?

- Our agency policy direction and touchstone
- Based on shared values with community, agency staff, and elected officials
- Provide guidance in setting the budget, policy development, programming, and physical parks over the next decade
- A tool for communicating to our staff, commissioners, and the general public about what we do and value
- Will build on what works and identify the gaps that we need to strategize around for the next decade



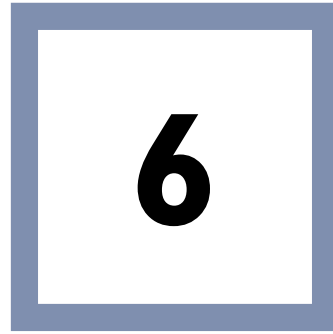
TIMELINE

	2019			2020											
	Oct	Nov	Dec	Jan	Feb	March	April	May	June	July	Aug	Sept	Oct	Nov	Dec
Commissioners	Plan update 10/2				CoW: Park Innovation			Park Summit	Key Directions: Discussion Item	Public Comment Period Opens		Public Comment Period Closes			Public Hearing and Adoption
	CoW 10/23 Scenario Planning														
CAC			CAC #1		CAC #2: Data analysis. And park innovations	CAC #3: What is the future we are planning for? and recommendations		Park Summit: May 7-8		CAC#5: Review draft	Deep Breath		CAC #6: Review feedback		Public Hearing

May 7-8

Park Summit

Questions?



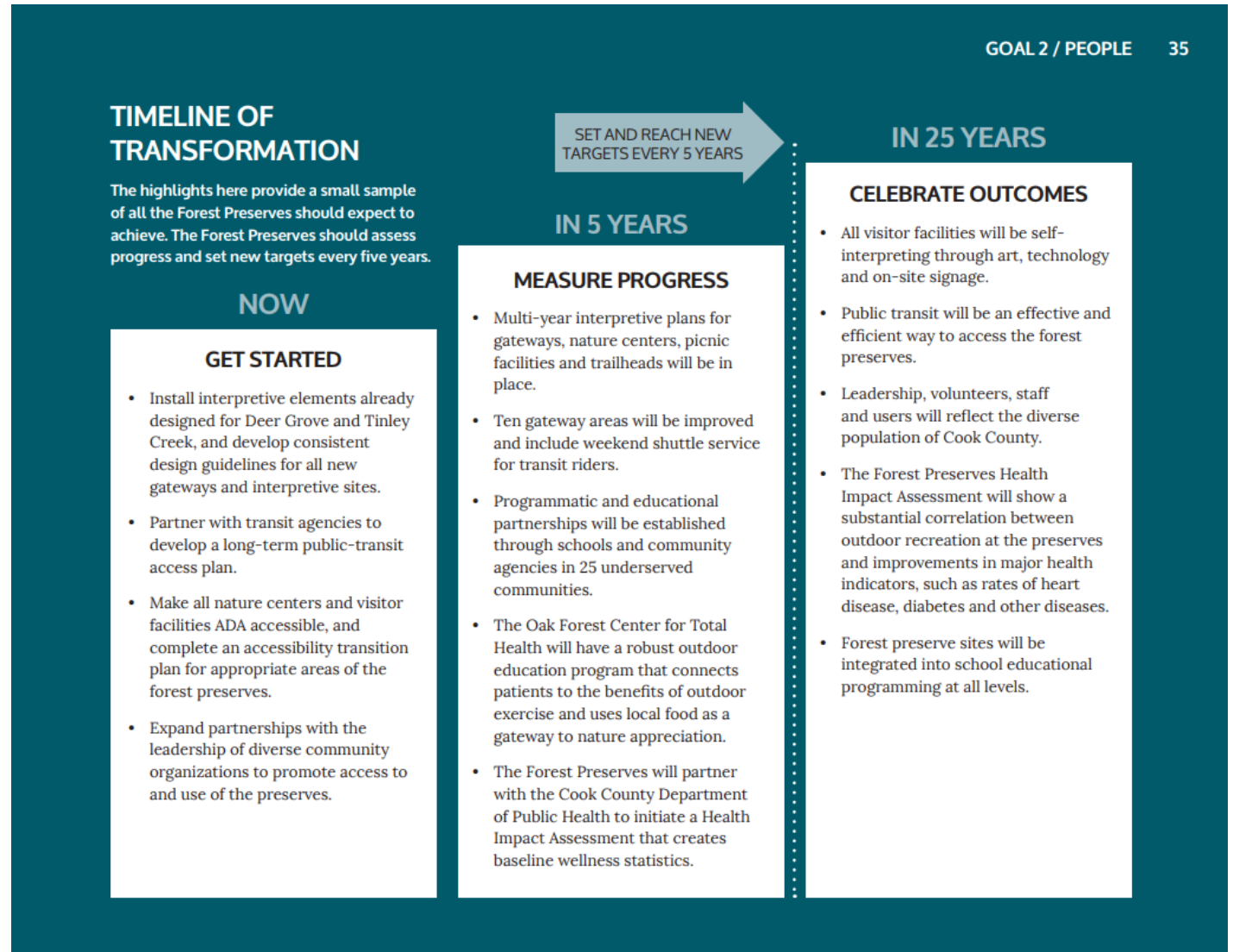
Park Innovations

CAC Park Innovations

What is happening in other park systems or cities that is inspiring to you that you think MPRB should consider doing in the next decade of our work?

General Policy Framework

- Vision
- Goals
- Strategies
- Measurement



Health and Safety

- Transparent concrete
- Daylight fluorescent aggregate
- Programming/Partnerships specific to opioid abuse
- Programming/Partnerships specific to combating homelessness
- Increasing use of technology in parks
 - Beacon Counters
 - Geofences
 - Drones



Health affects all other major themes and topics. Neighborhood recreation centers should be catalysts for people's health

Park resources for all communities. Enabling physical activities and health. Maintaining the undeveloped areas for city kids

Make sure to replace burnt out lightbulbs along parkways, they can get REALLY dark and feel unsafe

Click for assistance buttons/emergency buttons

Allow drones in parks for documentation, survey, and photography purposes (not recreation)

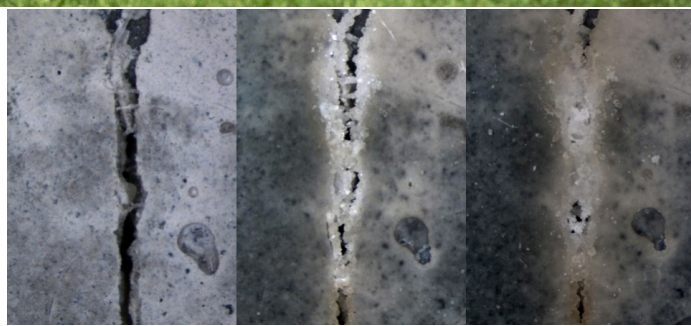
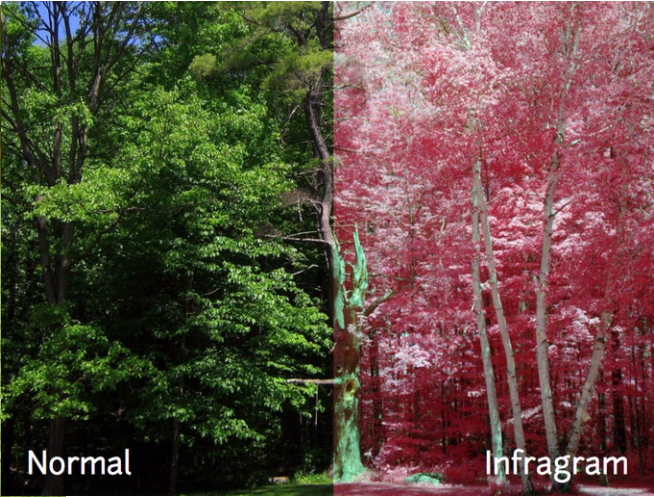


Health and Safety Policy and Benchmark Examples

- From Chicago Park District 2012 Strategic Plan
 - Have parks within a 10 minute walk of every Chicago Resident
 - Develop long term plan for information technology
- Portland, OR: Parks 2020
 - Provide safe and convenient access between parks, natural areas and recreation facilities and connect them with residential areas, civic institutions and businesses.
 - Double the amount of PP&R's most heavily used resource — paved and soft-surface trails (from the current 150 miles to 300 miles of trails).
- Vancouver
 - Ensure consistent quality and best practice application of lighting across the park system for safety, comfort and convenience. (Park Lighting Standards Policy

Maintenance

- Automatic/robotic lawnmowers
 - Ex. Dixie Lawn Service Inc. (North Carolina landscaping company)
- Near-infrared photography
 - Ex. Brooklyn, NY
- Vibrating Pollinators
 - Ex. Louisiana
- Drone pollinators
- Smart water controllers
 - Ex. Calabasas California
- Low pressure and rotating sprinklers
- Subsurface drip irrigation
- Graywater recycling
- Self healing concrete
- Photocatalytic titanium dioxide coating



Goats to pet and cut grass to save cost of gas for mowers, more eco-friendly

More organics composting, trash, and recycling bins in all parks

Tool libraries for community garden maintenance

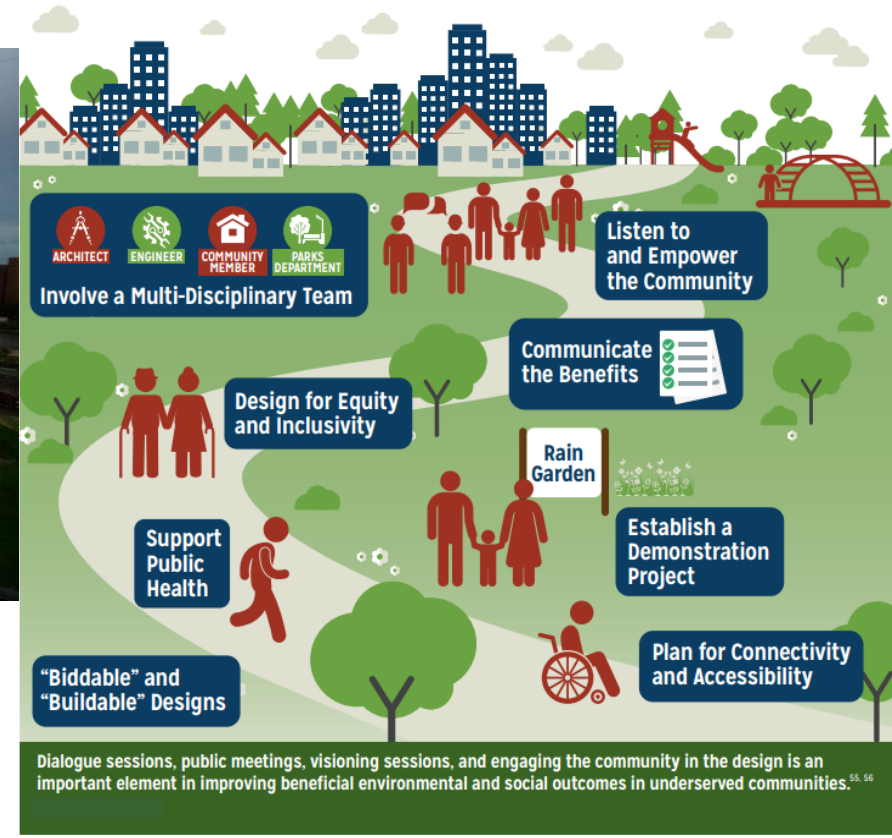
Maintenance Policy and Benchmark Examples

- From Rochester, MN Parks and Recreation System Plan
 - Ensure adequate funding to accomplish plan goals through policies that:
 - 1.1.2. Evaluate and incorporate into budgets ongoing operational and life-cycle costs when making facility capital decisions
 - 1.2.3. Establish an Infrastructure Replacement Reserve Fund to cover major capital repairs and replacements.
- Portland, OR: Parks 2020
 - Engage residents as stewards of Portland's parks and recreation system to help preserve the legacy for future generations. Increase the ratio of volunteer hours to paid staff hours to at least 30% (from 25% reported in 1999-00 SEA report).
 - Increase allocated funding for building maintenance from the current 1% to the industry standard of 2% of the replacement value of PP&R's buildings per the budget guidelines established by the Natural Research Council.

Natural Areas

- Green stormwater infrastructure
 - Bioretention
 - Bioswales
 - Constructed wetlands
 - Impervious surface disconnections
 - Green roofs
 - Permeable pavements
 - Rainwater Harvesting
 - Stream restoration
 - Urban tree canopy
 - Land Conservation
 - Vegetation management
 - Vegetated buffers

Penn Park at the University of Pennsylvania



I want to see a transition to non-toxic park management. No dangerous herbicides, fungicides, or insecticides, synthetic fertilizers.

Leave the parks in their most natural environment. Maintenance, safety and environmental good should be the top priorities

I would like to see more fruit trees with signage letting people know they're allowed to pick them

Natural Areas Policy and Benchmark Examples

- Portland, OR: Parks 2020
 - Maintain the current ratio of parkland to population — 20 acres per thousand. Currently there are 10,070 acres for 503,900 residents; increase that to 11,940 acres for 597,050 residents — an increase of 1,870 acres.
 - Acquire sufficient lands to protect existing resources (e. g., land along the Willamette and Columbia Rivers), to complete natural resource areas (e. g., Forest Park, Kelly Butte), and to protect locally significant natural areas (e. g., Rosemont Bluff).
 - Increase the amount of protected habitat land by 620 acres, from current 1,440 acres to 2,060 acres.
 - Expand urban forest on city streets from 60% to 80% and within parks from 80% to 90%.

Climate Resilience

- Pervious Paving
- Piezoelectric energy harvesting tiles
 - Ex. Paris Marathon
- Carbon upcycled concrete

Steps to address climate change and environmental sustainability in construction and renovation

I'd love to have a public solar powered green house that provides habitat for worms, bees, and butterflies

Create partnerships with vendors where they are not able to give away free plastic swag or single use plastic for food vendors

Climate adapt our parks for flooding, the urban heat island effect, support renewable energy, think about resilience



Climate Resilience Policy and Benchmark Examples

- From Chicago Park District 2012 Strategic Plan
 - Invest in capital projects that reduce operating expenses
 - Develop and implement a new park maintenance evaluation program
- From Brooklyn Park, MN Natural Resource Management Plan
 - Environmentally suitable native annual, biennial and perennial plant species (following the source selection criteria included in the Guidelines) are required for projects to meet legislative requirements and provide multiple landscape benefits. See pages 9 and 10 for the seed and plant source sequence that must be followed for all BWSR-funded projects.
 - Pesticide Application Policy
 - Tree planting guidance
- Washington, D.C. -- Stormwater Retention Credit Trading Program
- Vancouver
 - Seek to understand environmental and microclimatic conditions in parks to inform policy to optimize solar access to parks in the future in collaboration with Planning, Urban Design and Sustainability (CoV) (Solar Access Study).

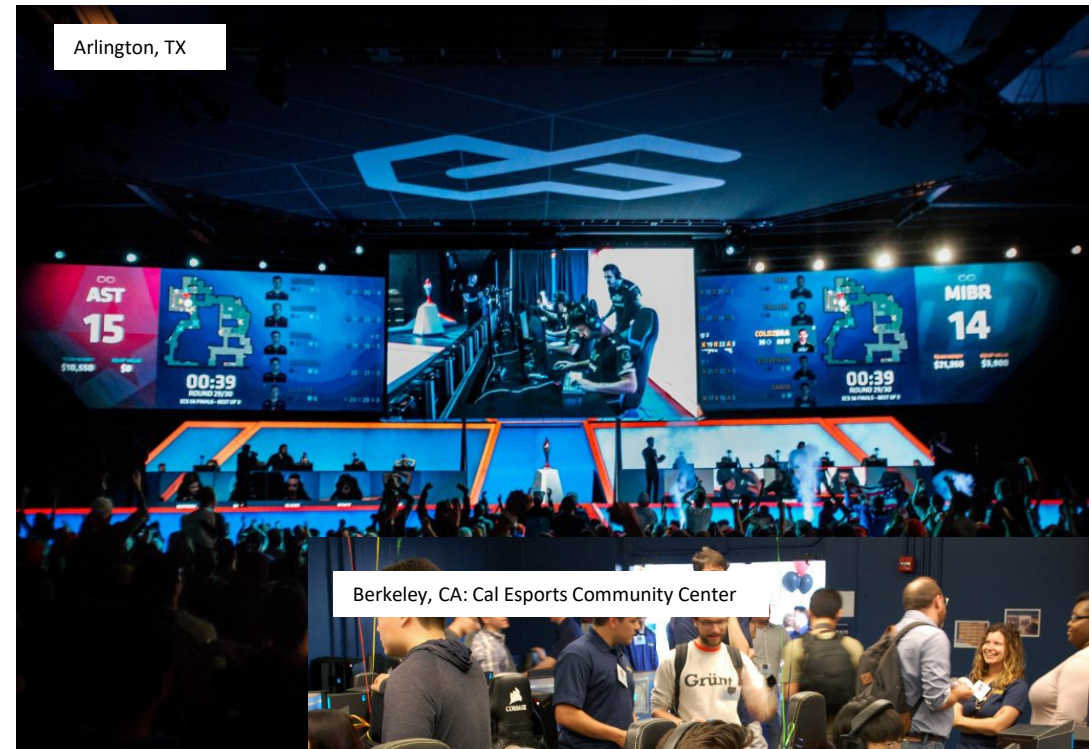
Programming

- **Esports-** Identified as a 2019 trend by the NRPA
 - Colleges increasingly have variety esports programs; National Federation of State High School Associations approved rollout of esports competition in High Schools
 - Creating a program area focused on esports that like other traditional sports offerings (ex. Boca Raton Recreation Services in Florida; Durango, CO; Virginia Beach, VA)
 - Utilizing existing spaces (ex. Fort Lauderdale, FL)
 - ...and creating new dedicated spaces (ex. Arlington, TX: Esports Stadium Arlington & Expo Center)
 - Sponsoring esports tournaments combining digital gaming and events/physical activity challenges

Video games in the parks events (like movies in the parks)

Video games to rent on park PCs

Science, Technology, Engineering and Math (STEM) Programming



Programming

- **Opportunities for Individuals with Physical or Cognitive differences**
 - Most prevalent programs focus on physical activities and fitness training
 - Volunteer and employment activities
 - Health and wellness programs, including chronic disease prevention, treatment programs and cooking/nutrition classes
 - Field trips, tours, and vacations
 - Special Olympics and/or Paralympics
 - Therapy and mentoring services (swim/water therapy, art/music therapy, peer coaching)
 - Technology training

Youth and Adult martial arts programming oriented toward dismantling able-ism



Westerville Parks and Recreation (Ohio)

More programs for children with special needs PLEASE



Programming

• Opportunities for Multicultural/racial/ethnic communities

- Heritage and holiday celebrations
- Culturally sensitive program hours (ex. Women-only pool time, female program leaders for female students, etc.)
- Health and wellness programs targeted to specific cultures, races, ethnicities (ex. “Summer Night Lights” in Los Angeles, CA)
- Budget and personal finance training
- Community gardens
- English as a Second Language (ESL) classes
- Job skills training, including computer skills

More soccer for Latino and Somali communities

More multilingual programming



Expand non-traditional sports programs

Collaborative activities/programs with multiple ethnic groups. Help us get to know other cultures so we can all learn to live together

Summer education activities to reduce the achievement/education gap

New American program offerings in parks

Voter education classes

Programming

• Opportunities for the LGBTQ+ Community

- Community events/awareness campaigns (ex. Pride Month)
- Family programs, including before/after school out-of-school time programs, summer camps and early childhood programs
- Social activities/programs
- LGBTQ+ youth groups and/or mentor services and gay straight alliances



Non-binary and transgender inclusive programs

LGBTQIA+ inclusion at RecPlus and other youth programming

Dance Party meet ups with LGBTQ+ Youth

Programming

- Health and Wellness Programming

More yoga in the parks!



I would like to have aerobics classes, in order to create community and be active together!



Karate Classes

Capoeria (Brazilian Martial Arts) Class

Health classes including cooking classes with community dinners

Programming

- Arts and Culture Programming

More creative programs for kids and youth. More individual creative activities

Talent shows and open mic events in smaller parks

Ceramics classes in the parks!

A lego building club

Dance Lessons in the Parks

Music lessons for kids

Multicultural art (public, individual, hands on)

Greater access and connection to local artist and food vendors for events and programs



Programming

- Multigenerational Programming



Skill building for adults (household focus; i.e., home repair)

Interactive, all age football teams!

More evening activities for seniors (not all of us are retired)

Please offer more preschool programs, and after/ out-of-school programs

More vibrant community activities for many ages

Programming

- **Climate Resilience/ Environmental Education**

Make native medicinal plant plots with opportunities for interpretation and educational programming

Better use and educational opportunities of existing natural habitat sites

Education at all Rec. centers about aquatic plants and animals, habitat, and species you might see at the parks

More education programs including topics like sustainability and debunking myths about climate change

It would be amazing if there were more environmental education classes through the park Board

Protect ecological diversity and use it as an opportunity to educate



Programming Policy and Benchmark Examples

- From Chicago Park District 2012 Strategic Plan
 - Enroll at least 30,000 children in summer camp
 - Maximize use of under-utilized program space
- From the Rochester, MN Parks and Recreation System Plan
 - 1.2.10. Explore collaborative funding opportunities in areas like public health, public art, programming, and sustainability
 - 1.2.12. Pilot the use of a crowdfunding tool for small, targeted projects (kickstarter.org, razoo.com or NRPA Fund Your Park)
 - Promote cultural sensitivity and sustainability in partners
 - Negotiate formal agreements that clearly identify responsibilities, expectations (type of service, hours, and fees), revenue/expense sharing, etc.
- Portland, OR: Parks 2020
 - Increase the proportion of residents who participate in recreation programs and facilities. Offer affordable programs and facilities. Reduce reliance on recreation fees from the current 50% to 25% of the PP&R's Recreation Division budget and backfill with general fund revenues or private funding
- Offer meaningful recreation programs and services. Increase the proportion of residents who rate the number and variety of recreation programs as “good or very good” from 61-67% reported in the 1999-00 SEA performance report to 90% for both by 2020.

Sports

- STATE OF PLAY (Aspen Institute National Level Data)
 - More kids are physically active
 - Sampling of most team sports is up (increases in baseball, basketball, ice and field hockey, wrestling, gymnastics, flag football, swimming on a team)
 - Decrease in soccer in response to team forming rule changes
 - Multisport play is making a comeback
 - Kids from low income homes face increasing barriers to participation
 - Economic security is an effective predictor of opportunities for inclusion
 - Given exposure, kids tried new sports
 - Lower birth rates impact youth sports participation

ACTIVE FOR LIFE

- States to ban tackle football?
- Sports betting legalization?

Turn the degraded tennis courts into pickleball courts

We need more soccer fields with limited access to protect them

Sports for Youth, making sure the cost is accessible to ALL ages

More soccer net availability and repair

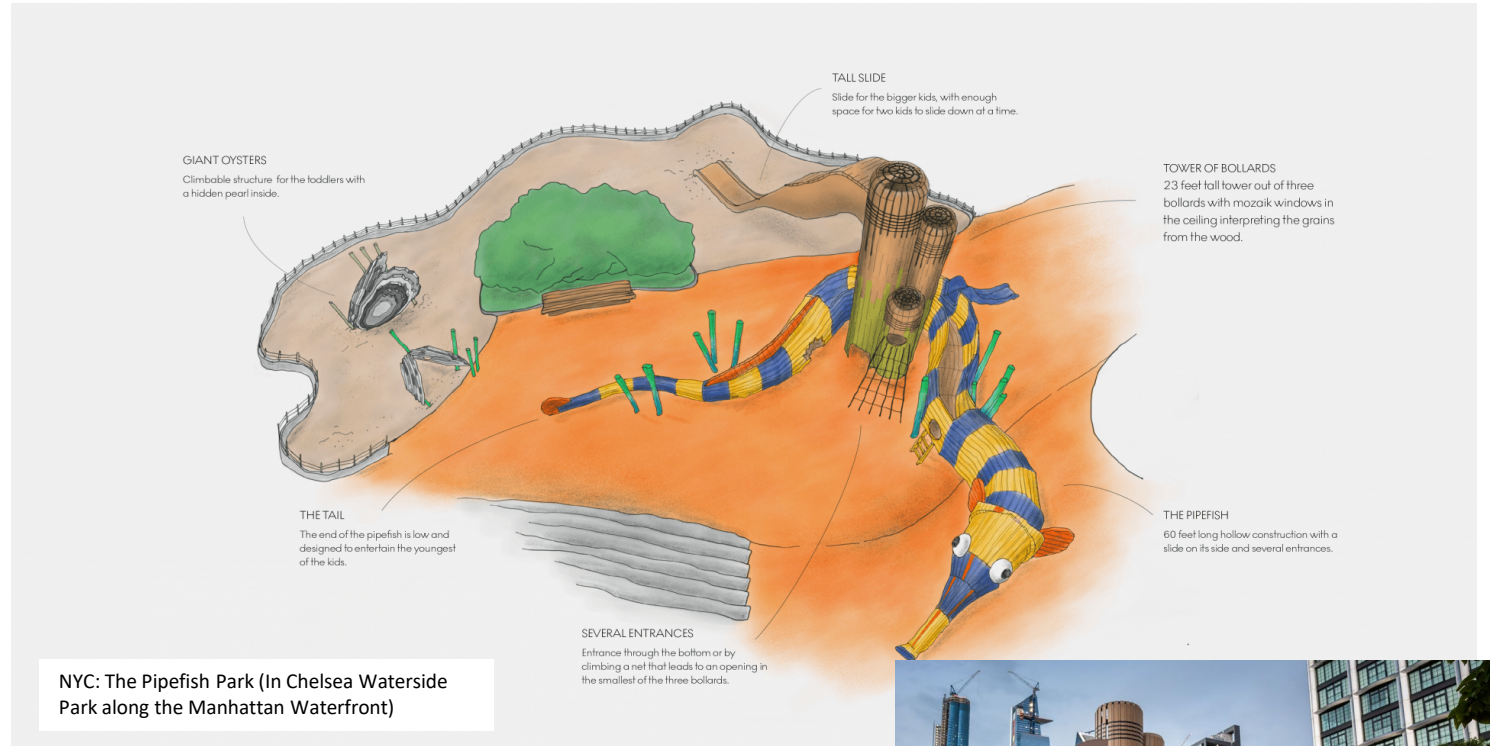
Sports Policy and Benchmark Examples

- From Chicago Park District 2012 Strategic Plan
 - Increase youth sports participation by 25%
- Portland, OR: Parks 2020
 - Provide 100 new sports fields for active recreation (from the current 220 sports fields to 320).
- Vancouver
 - Guide planning for adequate park land and recreation space on rezoning and redevelopment sites in collaboration with Planning, Urban Design and Sustainability (CoV) (Park Provision Policy).
 - Expand spaces available to the community for parks and recreation purposes (e.g. schools outside of school hours) by working with partners such as the Vancouver School Board.

Park Amenities

Themed Playgrounds

Theming around local history and culture allow children to learn while they play
...Or theming around other things



Community Engagement Feedback on Themed Playgrounds

Theme Park
with Roller
Coasters, like
Mall of
America

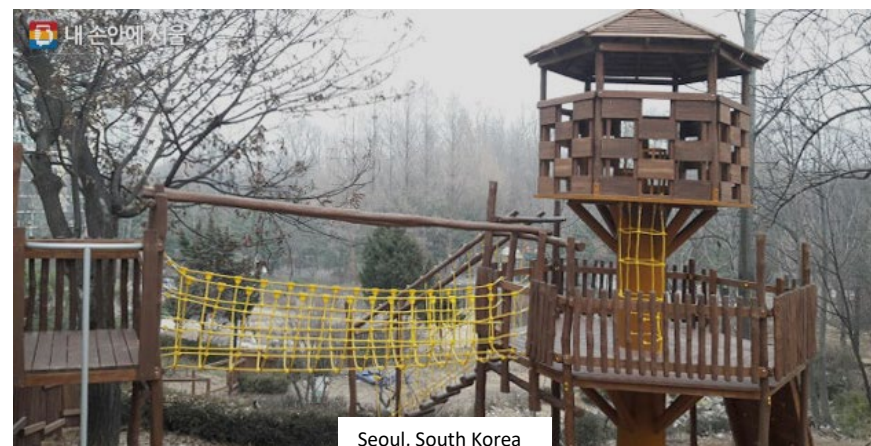
A theme
park based
on unicorns

Splash pad
or Pool with a
Jungle
Theme!

“My Dreams
are for it to rain
candy every day at
the park, maybe a
candy themed
playground”

Park Amenities

- Natural Playgrounds
 - Nature and Nature-play are becoming more prominent in playground planning
 - Benefits of connecting kids to nature



Community Engagement Feedback on Nature Based Play

More nature play like at Nokomis

Nature play and natural wooden playgrounds

I love the new nature play areas found in some parks. They encourage creative play

Tennis courts should get fixed faster or use old tennis courts for nature play like at Nokomis

Nature preschools and nature play on the Northside

More nature play areas (even for adults)

Nature play sensory areas

Park Amenities

- Going beyond ADA Accessibility
 - ADA compliance simply means that someone in a wheelchair can enter a playground, but not necessarily use any of the play equipment



Examples of Innovative Accessible Playground Equipment from Landscape Structures Inc.

Park Amenities

- Outdoor musical instruments in playgrounds
 - Continues along the trend of accessibility, playing an important role in the lives of those with autism or other cognitive differences.
- Commonly incorporate chimes, marimbas, xylophones, bells, and various percussion instruments



Community Engagement Feedback on Accessible Play & Musical Instruments

Sensory stuff for children with autism

Outdoor musical instruments

I want musical play features in the parks

Greater accessibility: physical disabilities and sensory processing

Sensory Friendly Parks!

Many neurodivergent people get huge benefits from being able to use swings, but increasingly as parks are updated, playgrounds are altered to make them only accessible to, available to, or comfortable for small children, and already marginalized populations like autistic adults lose an important and very beneficial outdoor activity.

Make sure you meet with people and families of people with disabilities so you can make sure you are thinking about not only physical abilities but sensory issues and programmatic accessibility

Overall accessibility: accessible pools, swings, slides, etc. **PLAY FOR ALL!**

Make the parks accessible beyond youth sports!

ALL parks should have activities/equipment for kids with disabilities

Make the parks accessible to families with disabilities

Wider slides to go down with kids with disabilities

We would love to see more accessible swings at neighborhood parks.

Park Amenities

- Challenging play & expanding audiences



Ithaca, NY: Ithaca Children's Garden



British Columbia, Canada: Terra Nova Adventure Park



Berkeley, CA: Berkeley Adventure Playground

Community Engagement Feedback on Challenging Play

An older kid park with a Ninja Course

More Ninja Warrior Parks

Free Running/Parkour Obstacle Course

Areas for adults to exercise while children play

More playsets with challenges between the 2-5 and 5-12 ranges

Spiderweb mountain climber to go up and over

I would really like to see more proportionate use of resources for adults in general

Obstacle Course for young children to exercise

Adult Fitness Monitoring and Incentivizing Activity

Outside workout machines. Colorful and safe for all (like playground equipment)

More Rock Climbing

"Play" like structures for adults, more built in exercise equipment (ie. parallel bars, pull up bars)

Would like BIGGER things to climb with ropes!

Places for the older kids to play besides the basketball courts

Break



Data Jam

Parks for All Community Engagement Summary & Gap Identification



Minneapolis
Park & Recreation Board

Who have we heard from?

We have about a 40% response rate for demographic data

Self Reported Ages from Community Engagement Data

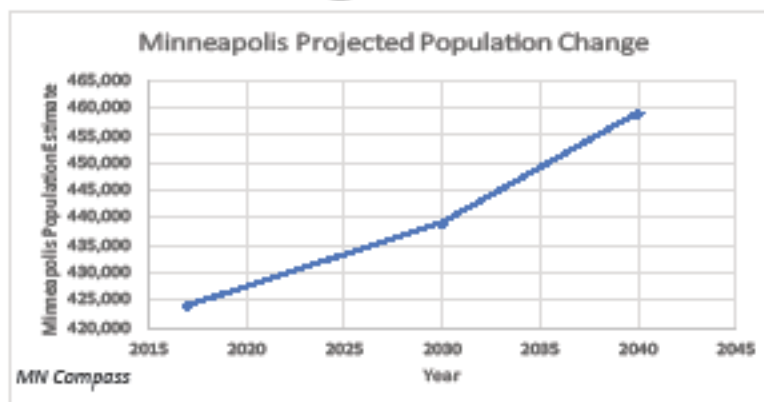


Self Reported Race/Ethnicity from Community Engagement Data



Results from Dream Park Cards

Our City is GROWING, AGING, and becoming MORE DIVERSE



City of Minneapolis Demographics:

Source: MN Compass

Almost 20% of the population in Minneapolis is under 18 years old (2013-2017)

20% of people in Minneapolis live below the poverty line

53% of residents in Minneapolis are renters

22% of the population speaks a language other than English at home

Regional Age Projections from Met. Council:

In 2010, adults 65+ were 11% of the region's total population, this will increase to 21% by 2040.

Regionally more than one in five residents will be age 65 or older, compared to one in nine in 2010.

Regional Diversity Projections from Met. Council:

By 2040, the composition of the seven county metropolitan region is projected to be 60.7% White, and 39.3% People of Color. Although these regional projections do not directly translate to Minneapolis demographics, we can expect continued diversification.

Regionally nearly half of net new households will be individuals living alone.

Race and Ethnicity Data for the City of Minneapolis (2013-2016)



White Black or African American Hispanic or Latino Asian or Pacific Islander American Indian

Figure 4: Forecasted Twin Cities Population by Age



Source: U.S. Census Bureau; Metropolitan Council Regional Forecasts

WHO WE'VE HEARD FROM

Online.
Rec centers.
100+ Events.
Community
collaborators.

Staff workshops.
PAC.
Commissioners.
YDT.

Neighborhood
meetings.
Community
meetings.
Standing
committee
meetings.



5,459
Comments

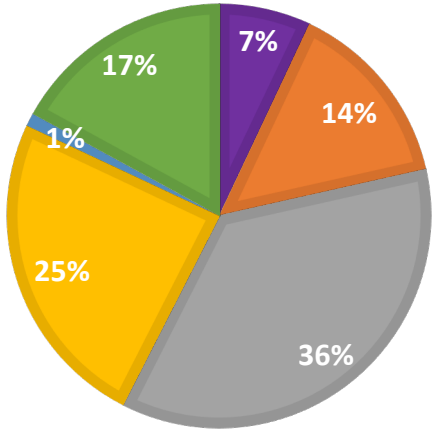
3,737
Respondents

Who filled out the survey as of 2/4/2020

- Staff: 154
- Community: 46

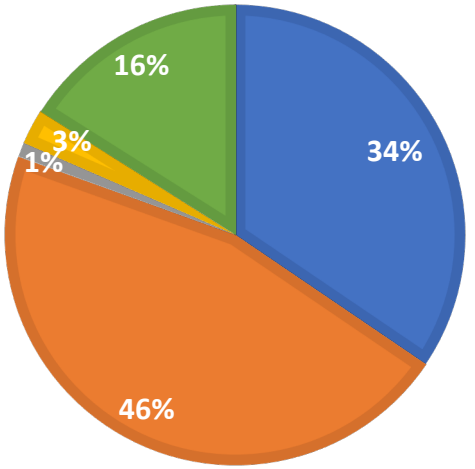
AGE

- Under 18
- 18-29
- 30-44
- 45-64
- 65 or over
- No Response



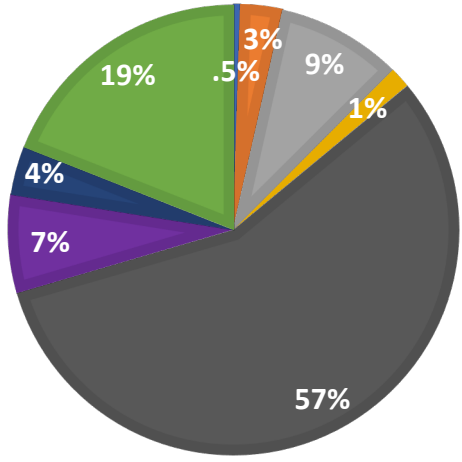
GENDER

- Female
- Male
- Non-binary
- Other Response
- No Response



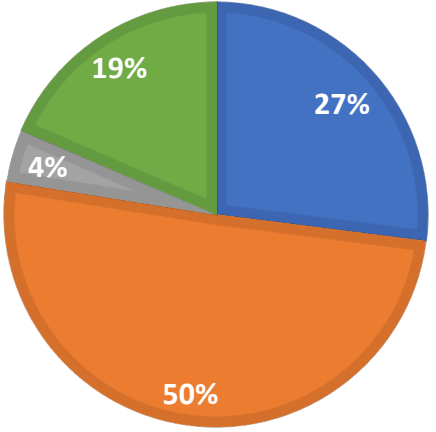
RACE

- American Indian or Alaska Native
- Asian
- Black or African American
- Hispanic, Latino or Spanish Origin
- White
- 2 or More Races
- Other Response
- No Response



HOME

- Rent
- Own
- Other Response
- No Response



Data Jam

Definition

- Often with creative community engagement, the resultant data is mixed in format, depth, and result
- A Data Jam allows multiple perspectives to be part of the data analysis
- A Data Jam allows a group of people to make meaning of input and data together
- Good way to make meaning of qualitative data

Data Jam

Process

1. Analyze data individually and in small groups, then report out
2. Develop a list of themes that are apparent in the data also pull out quotes and ideas that you think are exciting or great ideas
3. Verify and expand the topic areas that the Comp Plan will explore in greater detail moving forward
4. These themes will inform: topic areas, definition, values, strategies, goals
5. This also gives you as workgroup members a chance to interact first hand with the data (brings transparency to the data analysis process) and to consider multiple perspectives before diving into recommendations

I

Data Jam

Divergence/Emergence

- Each person has a packet.
- Individually read and look through data in its entirety. Write down and take notes on “themes” and “bright ideas” as you go.
- Make a list of your themes on a second read through and try to narrow.
 - Feel free to write in the packet.
 - Themes: think system wide and consider the topic area
 - Work to keep the themes 3-5 words in length and can assess value
 - What do you think is missing? What are the gaps?

2

Data Jam: Parks

Divergence/Emergence/ Team Convergence

- Document on flipchart the following as a group:
 - Any number of themes or “great ideas”
 - Compile all the ideas on one sheet – no need to discuss or reach consensus in small group
 - Highlight ideas that you like on your notes
 - We want to collect your individual and group notes!
 - Make note of what’s missing

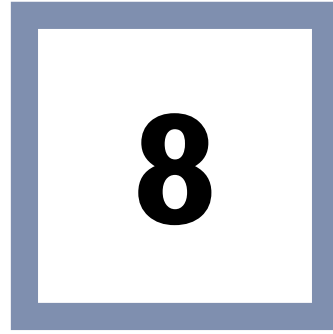
10 mins

3

Data Jam

Reporting

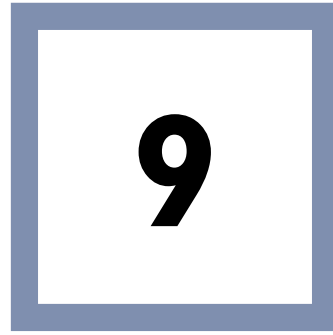
- Each table reports out their themes
- Reflect: what did you see that you feel is important to consider more deeply? What was new information? What did you see a lot of? What's missing?
- Dotmocracy on the themes



Public Comment Open Time

OPPORTUNITY FOR PUBLIC COMMENT

- Please sign up before you present
- 90 seconds to share your comments
- Staff will not respond after each comment, but will make note and can follow up after the meeting



Next Steps

NEXT CAC

- What makes a good policy?
- Power mapping the comp plan
- What is the future we are planning for?
- Draft strategies, goals, and values: recommendations
- **MARCH 26, 6-8 pm at Waite Park in NE Minneapolis**

10

Closing and Evaluation

THANK YOU!