

# Location – Current Condition





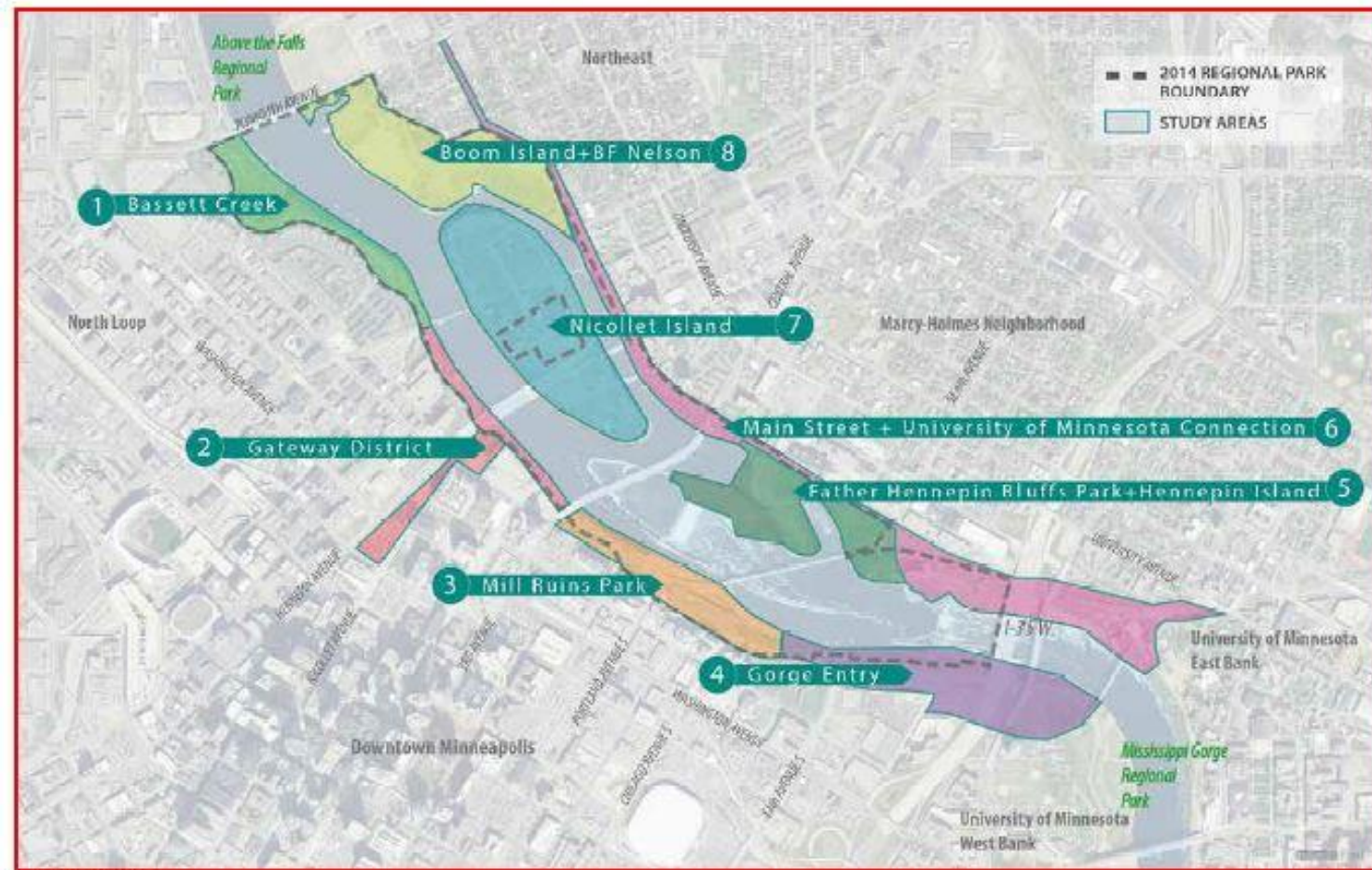


Figure 4: Study Areas

In 2016 the MPRB approved the Central Riverfront Master plan. The purpose of the Master Plan is to provide guidance on the redevelopment and enhancement of existing facilities and resources that endeavors to create:

**‘A regional park that will connect people to the Mississippi River, restore and enhance natural resources, reveal and interpret past and present nature and culture, engage visitors and adapt to changing social, economic and ecological realities.’**



# FHBP BIKE AND PED INFRASTRUCTURE

BIKE ROUTE  
PEDESTRIAN ROUTE

Note: Major bike and pedestrian transit routes will be addressed as part of a larger study conducted in partnership with the City of Minneapolis who has jurisdiction on 6<sup>th</sup> Street SE and along Main Street

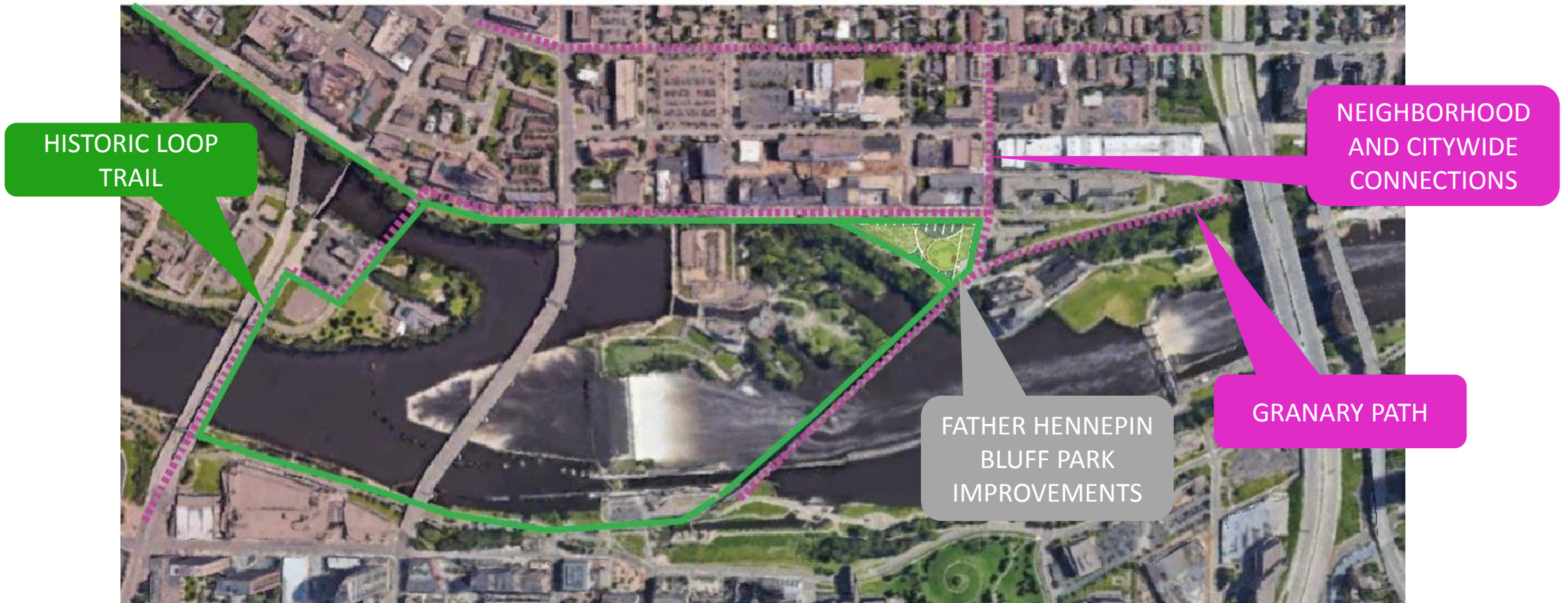






Figure 37 : Hennepin Island Recommendations

MPRB and Metropolitan Council have dedicated \$1M to phase 1 improvements and rehabilitation for Father Hennepin Bluff Park. Phase 1 will be dedicated to improvements that were identified in the master plan for the upper portion of Father Hennepin Bluff Park. These improvements to include these supporting initiatives:

1. **Improve the sidewalk area along Main Street to provide better access to the river and improve accessibility, safety and views.**
2. **Provide an improved path along the bluff that feels safe and accessible. Incorporate and align the existing shelter with the path.**
3. **Build a new performance area that allows for a larger gathering space and is directed away from the river.**
4. **Build a new band shell away from the sensitive bluff edge in a manner that still maintains the open space of the park.**
5. Clarify and emphasize pedestrian and bike circulation at the junction of the Stone Arch Bridge and 6th Avenue SE in a manner that reinforces the historic connection to the rail alignment.

(5. Continued)

This could include the following initiatives:

- a) Provide a signature entry experience as outlined in the East Bank interpretive plan.
- b) **Extend 6th Avenue Greenway design** and create a programmable convertible street between the 6th Avenue and Main intersection and the Stone Arch Bridge while still allowing University of Minnesota service vehicles and emergency vehicle access.
- c) Interpret the historic railroad alignment to promote wayfinding for bicyclists and pedestrians.
- d) Eliminate the utilitarian experience of the existing cul-de-sac.
- e) Provide a safe, accessible surface for bicyclists and pedestrians while still maintaining the historic cobblestones.
6. **Selectively remove degraded and/or invasive vegetation to frame views to the river along the bluff edge.**
7. **Add a restroom facility and/or visitor orientation**

# Why are we here today?

## MASTER PLAN – Completed 2016

### Community Engagement:

Seek Broad Input with multiple perspectives from users within the master planning area.

### Design Decision Making:

Broad Community input and review shape the design of park and park features.

CAC (Community Advisory Council) appointed by elected officials define planning initiatives and guidelines.

### Design Approval:

Master plan finalized by CAC and presented to MPRB for review, public comment and approval.

Once the master plan is adopted, major changes to scope or design require review and approval by MPRB

## PLAN IMPLEMENTATION

### Community Engagement:

Seek Broad Input with multiple perspectives from park users and local community.

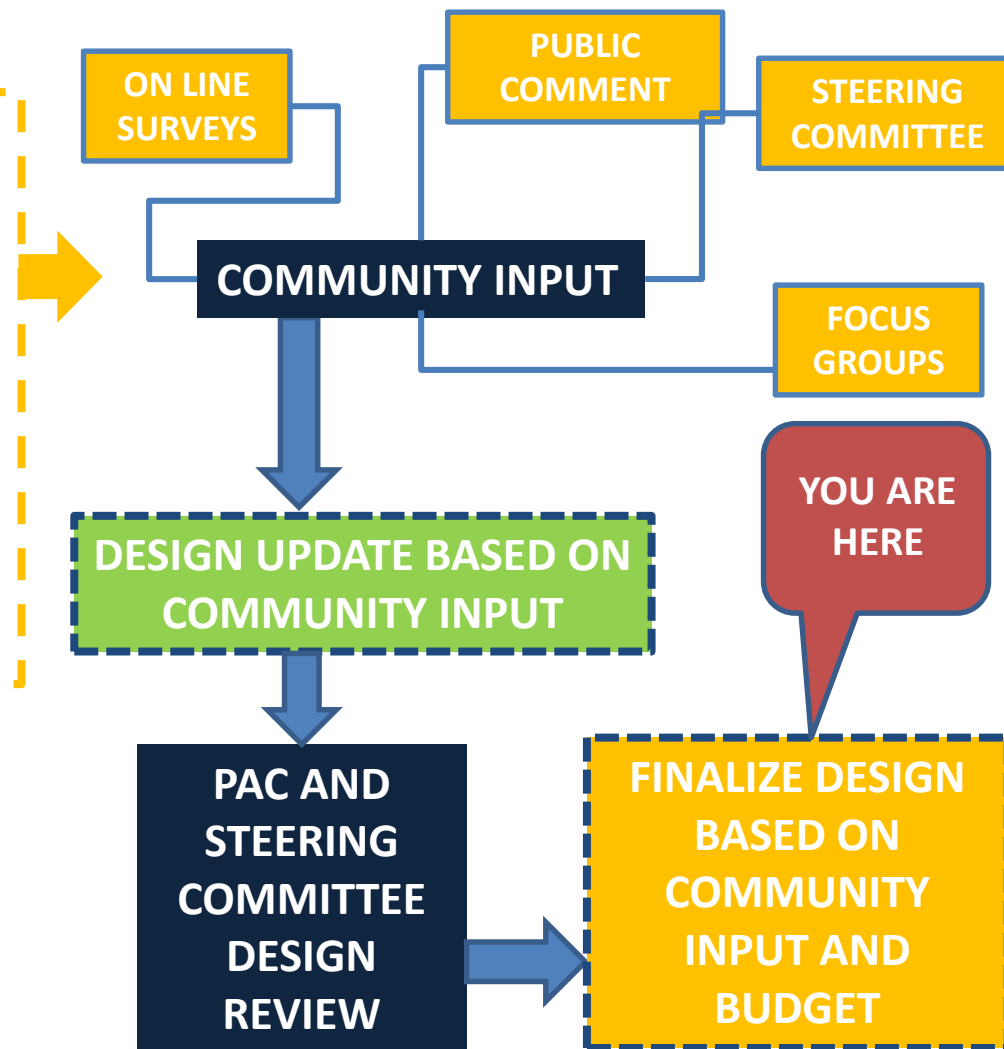
### Design Decision Making:

Broad Community input required for Public Prioritization Process to determine budget priorities, schedule and project phasing.

Detailed input from focus groups on specific amenities (ie. Playground) as determined by design team and in compliance with MPRB Design and Construction Standards.

### Design Approval:

Design plan approved as part of adopted master plan does not require further MPRB approval.  
major changes to scope or design require review and approval by MPRB





**Student Input Meeting**

**Date:** Thursday Jan. 24, 2019

**Location:** First Congregational Church

**Address:** 500 8th Ave. SE

**Topic:** Students share ideas and input.

**Native American Listening Session**

**Date:** Saturday Jan. 26, 2019

**Location:** Pillsbury A Mill

**Address:** 315 SE Main St.

**Topic:** Learn Dakota and Indigenous People's History near Father Hennepin Bluff Park, broaden our definition of history and reconnect with nature, the importance of water and a sustainable landscape.

**Environment and Sustainable Landscapes Meeting**

**Date:** Tuesday Jan. 29, 2019

**Location:** Pillsbury A Mill

**Address:** 315 SE Main St.

**Topic:** Give ideas on environmental improvements for the park.

**Biking and Walking Meeting**

**Date:** Saturday Feb. 2, 2019

**Location:** Pillsbury A Mill

**Address:** 315 SE Main St.

**Topic:** Meeting begins at Pillsbury A Mill, followed by short walk around park to observe biking and walking patterns and share ideas.

**Neighboring Residents Meeting**

**Date:** Saturday Feb. 2, 2019

**Location:** Pillsbury A Mill

**Address:** 315 SE Main St.

**Topic:** Meeting for residents who live near Father Hennepin Bluff Park to provide ideas on changes and improvements at the park.

**Steering Committee – Design Review**

**Date:** Tuesday February 21, 2019

**Date:** Tuesday May 14, 2019

**MHNA Design Share**

**Date:** Tuesday February 21, 2019

**Date:** Tuesday April 16, 2019

**Date:** Tuesday May 21, 2019

**NIEBNA Design Share**

**Date:** Tuesday February 11, 2019

**Date:** Tuesday May 16, 2019

**MPRB Staff Design Review**

**Date:** Tuesday May 13, 2019

**Date:** Monday May 20, 2019



# Community Feedback - Prioritization

Weighted score		Most Important	Top Priority, not most important	Not Very Important	Not Important at all	Total Weighted Score
		5	3	2	1	
1.0	Improve the sidewalk area along Main Street to provide better access to the river and improve accessibility safety and views	10	43	19	5	
		50	129	38	5	222
2.0	Provide an improved path along the bluff that feels safe and accessible. Incorporate and align the existing shelter with the path	29	38	5	3	
		145	114	10	3	272
3.0	Build a new performance area that allows for a larger gathering space and is directed away from the river	10	31	30	6	
		50	93	60	6	209
4.0	Clarify and emphasize pedestrian and bike circulation at the junction of the stone arch bridge and 6th avenue SE	30	36	15	1	
		150	108	30	1	289
5.0	Selectively remove degraded and or invasive vegetation to frame views to the river along the bluff edge.	19	43	15	1	
		95	129	30	1	255
6.0	Add a restroom facility and /or visitation center	10	45	17	4	
		50	135	34	4	223

# Community Feedback - Themes

access along amenities arch area bandshell bbq better **bike** bluff  
**bridge** chairs conflict connection culture dog edge  
historic history **improve** keep **landscape** lighting location loop  
main native natural nice **park** **paths** **ped**  
**pedestrian** people **performance** permanent plantings remove  
restroom river separate **space** stone street  
**sustainable** tables trails **views** walking water





# FHBP Final Schematic Design

## SCHEMATIC DESIGN CONCEPT





## CONCEPT ENLARGEMENT :: EAST

KEY PLAN



### KEY DESIGN FEATURES

- Existing paths within ROW to remain
- Path system organic/informal character
- New bandshell located away from bluff
- Minimal modification to existing path alignments and topography
- Preservation of existing trees; introduction of new native trees
- Gateway at West and East plazas
- New pedestrian lighting throughout







# FHBP Final Schematic Design

## CONCEPT ENLARGEMENT :: WEST

KEY PLAN



### KEY DESIGN FEATURES

- Existing paths within ROW to remain
- Path system organic/informal character
- New bandshell located away from bluff
- Minimal modification to existing path alignments and topography
- Preservation of existing trees; introduction of new native trees
- Gateway at West and East plazas
- New pedestrian lighting throughout





# FHBP Final Schematic Design

## SCHEMATIC DESIGN: CHARACTER IMAGES

POLLINATOR LAWN



STEEL + WOOD PERGOLA ROOF AT OVERLOOK



SEATING NODES



ART PAVEMENT



BLUFF TRAIL RAILING



NATURE PLAYGROUND + DRY CREEK BED



COLORLED AND SANDBLAST FINISH PAVEMENT



CUT LIMESTONE SEATING BLOCKS, STEPPERS

