

Elmer Says...

Deciduous trees are dandy!

Deciduous (*dih-sij-oo-uhs*) trees lose their leaves once a year. Examples of deciduous trees are elms (like me!), birches, ashes, maples, oaks, and lindens.



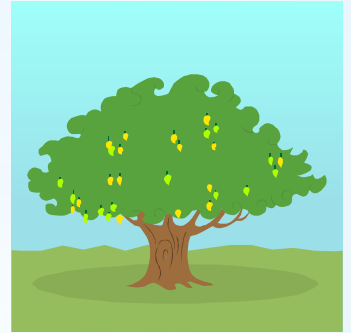
Deciduous trees make buds and leaf out in the spring. Some have beautiful flowers, too!



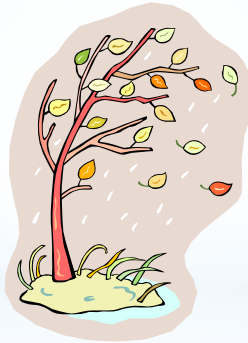
Leaves on deciduous trees turn beautiful colors in the fall and eventually fall off the tree.



Deciduous trees make a lot of chlorophyll in the summer. Chlorophyll is what makes the leaves green.



Deciduous trees provide shade for animals, birds, and people during the hot summer months!



When the green chlorophyll begins to break down in the fall, the leaves change color. Leaves fall off because a layer of cork grows across the twig of the leaf, slowly stopping the supply of water.

When the leaves are gone in the winter, the tree stops growing because it cannot produce food. Don't worry, the tree will start growing again in the spring!

