

**BOHEMIAN FLATS PARK CONCEPT - FRAMEWORK PLAN**

**DRAFT**



**BOHEMIAN FLATS PARK**

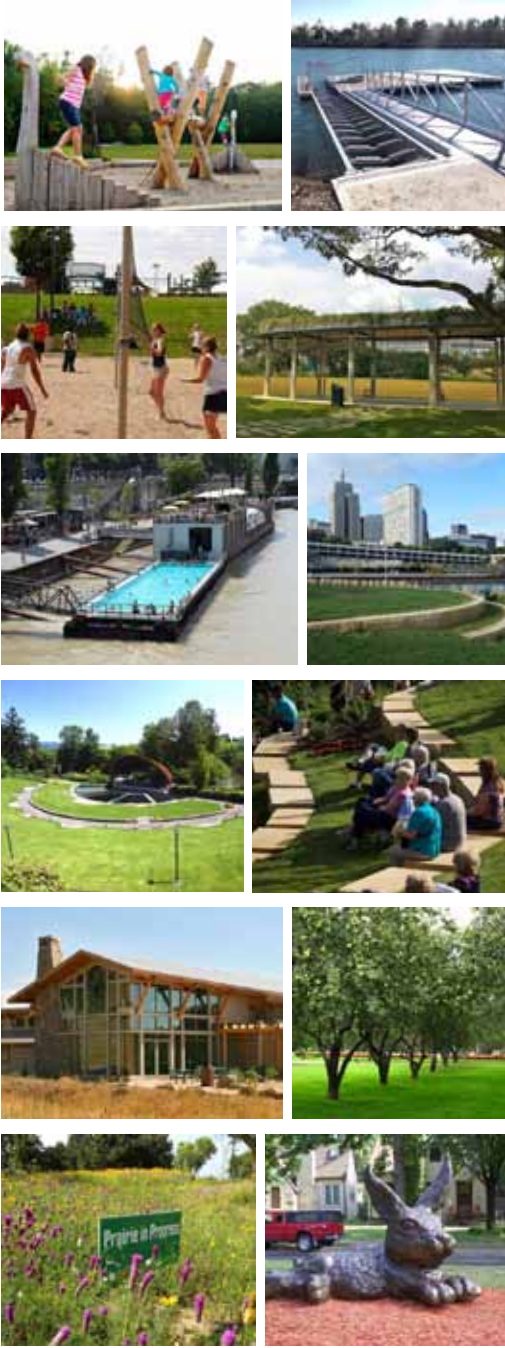
**CONCEPT FEATURES:**

- A. Beach with picnic tables, kayak and canoe storage, small boat (ADA accessible) launch and paddle share opportunity.
- B. Potential sand volleyball courts
- C. Children's nature play area and picnic area/shelter
- D. Formal picnic area/shelter with green roof
- E. River barge: floating restaurant/cafe and swimming pool
- F. Tour boat docking
- G. Natural amphitheater built into slope facing the river
- H. Stage area/bandshell for concerts and events
- I. Improve trail connection to U of M West Bank with stairs or ADA accessible trail up the slope
- J. Enhance existing stormwater features and gardens
- K. Maintain and enhance small wooded area
- L. Welcome / cultural center that includes: vendor space, restrooms, prayer and meditation room, and historic interpretation
- M. Clover lawn/prairie restoration/savanna area with public art, walking trails, terraced gardens
- N. Opportunity for expanded/overflow parking for events under Washington Ave bridge (grass pave)
- O. Add shade trees and native landscaping throughout. Use tree stands to shape park spaces
- P. Separation of pedestrian and bicycle trails
- Q. Orchard/Shade trees
- R. Improve 4th street sidewalk
- S. Create gateways to Mississippi Gorge Regional Park (monument signage/park identity)
- T. Potential zipline connecting East and West Banks of River

**ADDITIONAL OPPORTUNITIES:**

- Expand bike parking
- Historic/cultural interpretation throughout the park
- Interpretation opportunities:
  - » Immigrant communities
  - » Settlement and industry
  - » University of Minnesota
  - » Spiritual connections

**PRECEDENT PHOTOS**





**BOHEMIAN FLATS PARK CONCEPT: WITH FUTURE DAM REMOVAL - FRAMEWORK PLAN** **DRAFT**



**BOHEMIAN FLATS PARK WITH FUTURE DAM REMOVAL**

**CONCEPT FEATURES:**

- A. Beach with picnic tables, kayak and canoe storage, small boat (ADA accessible) launch, and paddle share opportunity.
- B. Potential sand volleyball courts
- C. Children's nature play area and picnic area/shelter
- D. Formal picnic area/shelter with green roof
- E. Wetland / Emergent vegetation**
- F. Giant Stone Steps with views up and down river**
- G. Natural amphitheater built into slope facing the river
- H. Stage area/bandshell for concerts and events
- I. Improve trail connection to U of M West Bank with stairs or ADA accessible trail up the slope
- J. Enhance existing stormwater features and gardens
- K. Maintain and enhance small wooded area
- L. Welcome / cultural center that includes: restrooms, vendor space, prayer and meditation room, and historic interpretation
- M. Clover lawn/prairie restoration/savanna area with public art, walking trails, terraced gardens
- N. Opportunity for expanded/overflow parking for events under Washington Ave bridge (grass pave)
- O. Add shade trees and native landscaping throughout. Use tree stands to shape park spaces
- P. Separation of pedestrian and bicycle trails
- Q. Orchard/Shade trees
- R. Boardwalk through wetland area**
- S. Floodplain forest**
- T. Improve 4th street sidewalk
- U. Create gateways to Mississippi Gorge Regional Park (monument signage/park identity)

**ADDITIONAL OPPORTUNITIES:**

- Expand bike parking
- Historic/cultural interpretation throughout the park
- Interpretation opportunities:
  - » Immigrant communities
  - » Settlement and industry
  - » University of Minnesota
  - » Spiritual connections

**PRECEDENT PHOTOS**







**ANNIE YOUNG MEADOW & RIVERSIDE PARK**

**CONCEPT FEATURES:**

- A. Pollinator garden space/urban agriculture with picnic opportunity
- B. Additional trail along edge of park with clearing of invasives for views of the river
- C. Picnic opportunity within pollinator garden
- D. Additional picnic locations with views of river and consistent MPRB furnishings: picnic tables with concrete pads, lighting, grills, benches
- E. Expand/improve volleyball program to 3 courts
- F. Restore tennis courts
- G. Add an additional basketball court. Improve existing basketball court
- H. Improved and enlarged picnic location with consistent MPRB furnishings: picnic pavilion, picnic tables with concrete pads, shade structures, lighting, grills, drinking fountain, benches
- I. Rehabilitate play area location with added play elements
- J. Splash pad/pool enhancement
- K. Improve/restore soccer field-biochar opportunity for improved soil quality and carbon absorption near freeway and movie in the park programming during non-soccer/sport programed times
- L. Renovate old restroom building
- M. Opportunity for additional angled parking spaces along the edge of the park with signage posting park hours
- N. Create mid-level terrace nature play/picnic area in glen area between Riverside Park and Annie Young Meadow - intensive invasive species removal
- O. Restore historic staircase to Annie Young Meadow
- P. Provide convenient and contextually sensitive pedestrian connections to Annie Young Meadow
- Q. Picnic/BBQ area including shelter/shade structure
- R. Improve connection with raised crossing table and pavers and park entry with trailhead kiosk
- S. Restroom facility and interpretive signage, bike parking, and ADA accessible paved area
- T. Widen walkway - provide police car access
- U. Potential future accessible route/connection between Riverside Park and Annie Young Meadow
- V. Opportunity to eliminate sidewalk along river wall and install rain garden

**PRECEDENT PHOTOS**





**EAST RIVER FLATS**

**ISSUES AND OPPORTUNITIES:**

- Adjacent to University of Minnesota (U of M) campus
- Large open turf areas - wet during spring months
- Access to the river along shoreline
- Parking lot often used by U of M visitors, staff, and students - not park users
- Lacking shelter or picnic facilities
- Lacks programming - other than U of M boathouse
- Existing staircase on steep slope

**SITE OPPORTUNITIES:**

- A. Additional connection to East River Parkway
- B. Formalized park entry (extending the) connecting Coffman Memorial Union and the U of M Campus to the East River Flats Park
- C. Picnic tables and selective clearing for river views
- D. Open event lawn/flexible open space (potential overnight camping)
- E. Formalized garden edge (Orchard/ native plantings/pollinator gardens) enhancing entry and defining open space
- F. Terraced/stepped seating area (limestone slabs)
- G. Rocky or gravel beach
- H. Accessible canoe/kayak launch and entry dock
- I. Existing and enhanced stormwater/wetland plantings
- J. Sand volley ball courts
- K. Picnic/BBQ shelter area
- L. Existing University of Minnesota boathouse
- M. Re-open restrooms
- N. Potential location for zipline platform/lead-line
- O. Climbing wall
- P. Wayfinding signage to Franklin Flats

**ADDITIONAL OPPORTUNITIES:**

- Safety phones
- Additional lighting
- Interpretation features - (geology, history, ecology, recreation)
- Skyline viewsheds/overlooks
- Paddle share
- Consistent MPRB furnishings: picnic tables with concrete pads, lighting, grills, drinking fountain, benches

**PRECEDENT PHOTOS**







FRANKLIN FLATS

ISSUES AND OPPORTUNITIES:

- Lowland park area lacks park name identity
- Steep slopes/river bluffs
- Floodplain subject to seasonal flooding, including existing paved trail
- Seasonal access to park area
- Bridal Veil Falls is currently a popular ice climbing destination
- Park connected to East River Flats with boardwalk
- Popular fishing location under Franklin bridge
- Lacks good wayfinding to direct park users to floodplain
- Existing staircase (Franklin Ave) in need of repair/maintenance
- Overgrown vegetation inhibiting overlooks

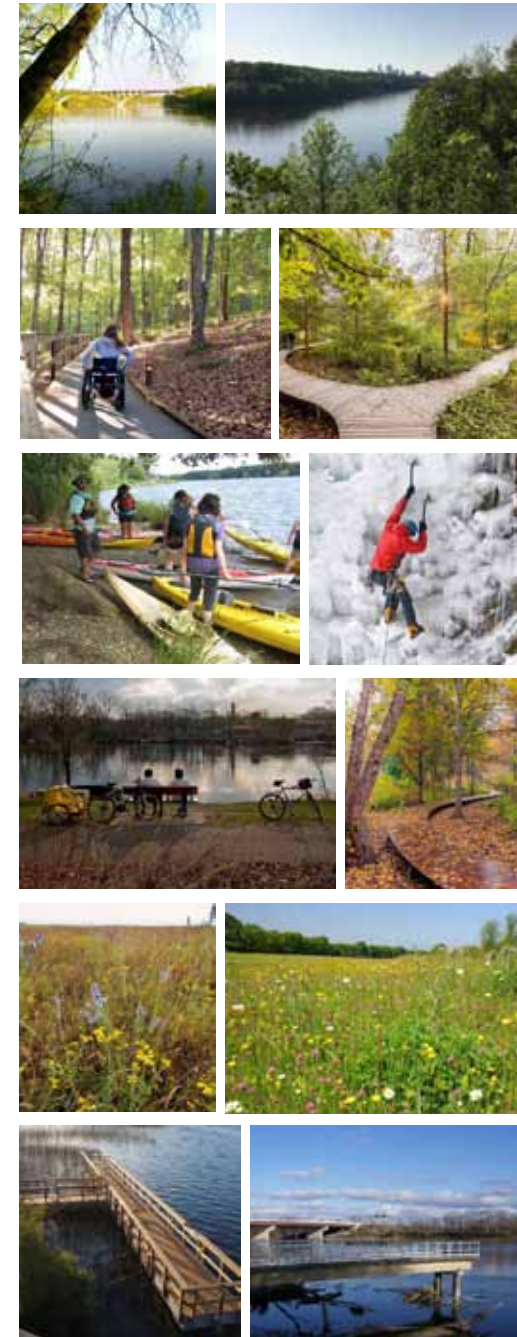
SITE OPPORTUNITIES:

- Explore potential for formalized ice climbing on Bridal Veil Falls, safety warnings about ice climbing
- Boardwalk on seasonally flooded areas of trail
- Staircase repair and maintenance
- Fishing pier opportunity
- Prairie restoration opportunity
- Existing seating with opportunity for selective clearing to improve overlook and river visibility
- Improve stormwater outfall locations and enhance ecological habitat
- Wayfinding and entry signage
- Enhance former service drive to support entrance experience
- Directional/trail signage
- Overlook above Bridal Veil Falls
- Canoe / kayak launch and paddle share opportunity
- Natural surface recreation trail

ADDITIONAL OPPORTUNITIES:

- Snowshoe trails
- Birding locations/bird blinds
- Consistent MPRB furnishings: picnic tables with concrete pads and benches
- Environmental educational
- Plant identification
- Interpretation
  - » River ecology/geology
  - » Bridal Veil Falls
  - » Meeker Dam
  - » Stewardship
- Clean/re-open Meeker overlook

PRECEDENT PHOTOS







OAK SAVANNA

ISSUES AND OPPORTUNITIES:

- Safety issues/concerns - remote section of savanna
- Quiet savanna and space provides shade and open areas for informal gathering/picnicking
- Existing trails on slopes showing erosion
- Existing Fencing is deteriorating
- Major ravine - piping and rip rap are in disrepair
- High quality oak savanna landscape
- Mesic Prairie Remnant
- Existing interpretive elements in disorder
- High quality birding opportunities

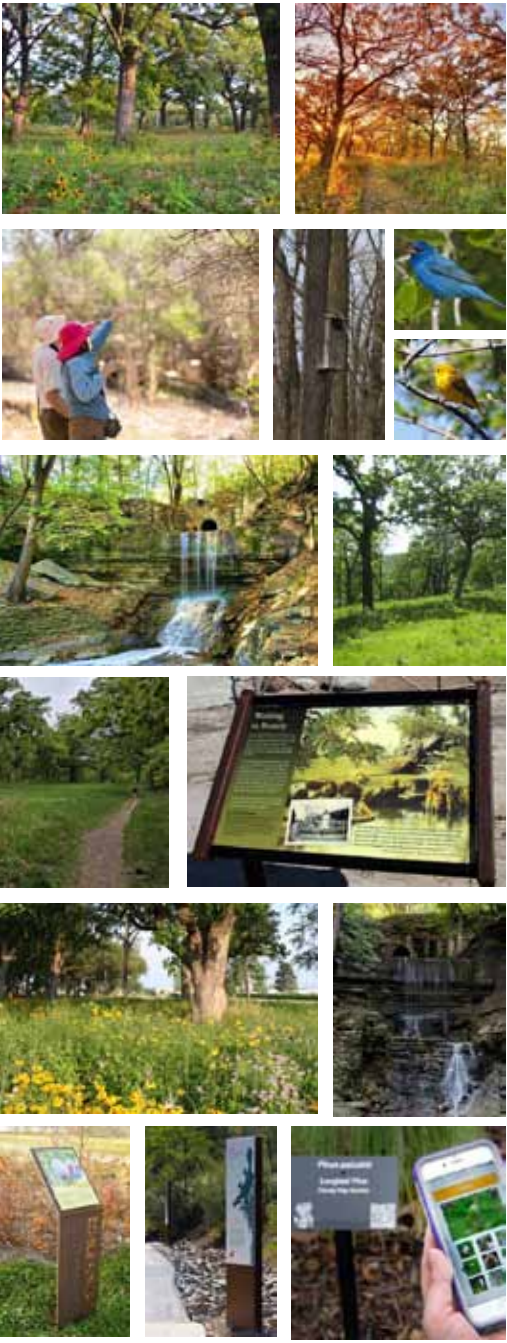
SITE OPPORTUNITIES:

- A. Formalize and mark entries into savanna. Develop a signage identity to help denote the savanna, restoration, and birding opportunities
- B. Improve and add interpretative and signage elements within the savanna - including environmental, cultural history and interpretation related to birds in the area
- C. Ravine improvements: stone and water course adjustments, plantings and bioengineering. Partner with City on outfall
- D. Stormwater outfall improvements to enhance water quality and wildlife habitat
- E. Improved river valley overlook
- F. Landscape Restoration: repair and restore eroded slopes
- G. Maintain picnic area and preserve remnant prairie and restore disturbed prairie to improve quality of natural area and habitat/wildlife value
- H. Replace fencing along ravine with higher quality reflecting the national park identity

ADDITIONAL OPPORTUNITIES:

- Trail modifications and sustainable design
- Incorporate boardwalks to protect rare plants/sensitive landscape
- Incorporate more seating
- Develop a cleanup and maintenance strategy to clean trails
- Snowshoeing
- Recognize as birding site
- Coordinate restoration and removal projects with local partners (LCC, FMR, etc.)
- Interpretation opportunity:
  - » Ecology
  - » Remnant prairie/oak savanna
  - » Birding
  - » Stewardship

PRECEDENT PHOTOS



**LONGFELLOW FLATS / BEACH & MINNEAPOLIS BOATHOUSE AREA - FRAMEWORK PLAN** **DRAFT**



**LONGFELLOW FLATS / BEACH & MINNEAPOLIS BOATHOUSE AREA**  
**ISSUES AND OPPORTUNITIES:**

- High quality floodplain forest
- Soft trails in relatively good condition – loop trail
- Steep and long staircase provides access to the river flats
- Seasonal flooding of beach and other areas within the flats area
- Little to no wayfinding/signage
- Some trail maintenance required
- Some cleanup of trash required
- No seating provided
- No trash receptacles provided
- Large stormwater outfall exists below 33rd Street, just north of beach area
- Several informal fire ash piles on beach

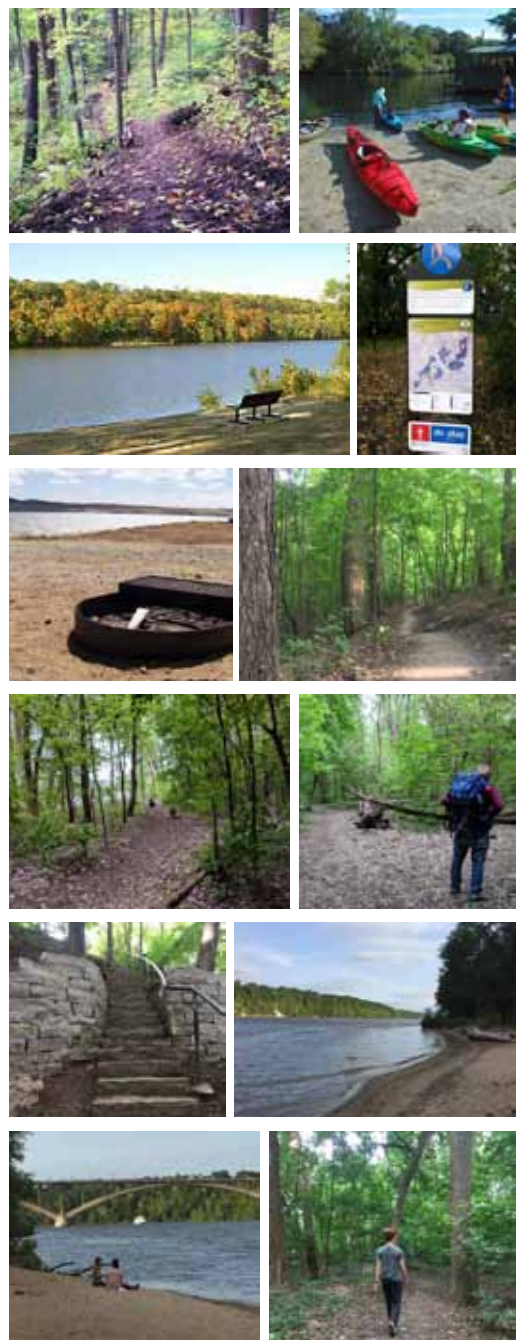
**SITE OPPORTUNITIES:**

- A. Connect Longfellow Flats to the Minneapolis Rowing Club by sustainable natural surface trail
- B. Enhance the stormwater outfall below 33rd Street - improving water quality and wildlife habitat
- C. Signage/wayfinding, interpretation, and trash receptacle at top of staircase
- D. Provide some seating/benches in a few key locations
- E. Connect Longfellow Flats to the Oak Savanna by sustainable soft surface trail
- F. Repair/renovate stairway
- G. Canoe / kayak launch
- H. Bike share opportunity
- I. Staircase to access river from parkway
- J. Provide vehicular access to canoe / kayak launch

**ADDITIONAL OPPORTUNITIES:**

- Cleanup of trash and debris
- Mitigate/remove invasive plant species
- Minimal soft trail maintenance
- Environmental education
- Plant identification within the forest
- Consider designated fire pits to control ash on beach
- Interpretation
  - » River ecology/geology
  - » Stewardship (LCC, NPS, FMR, etc.)

**PRECEDENT PHOTOS**





# RIPARIAN CHARACTER ON LOWER GORGE ISLANDS



## OPPORTUNITIES UNDER FUTURE CONDITIONS WITH NATURALIZED RIVER

- Restoration of floodplains and islands to approximate historical conditions
- Natural floodplain inundation and connectivity
- Increased floodplain forest area
- Increased habitat area for migratory birds
- Increased fish spawning habitat area
- Increased potential for river otter habitat
- Expanded natural riparian corridor
- Diverse habitats along river
- Improved canoe and kayak access
- Greater flat and accessible area for recreation (hiking, fishing, biking, bird watching, picnicking)
- Increased area for stormwater treatment
- Rock/gravel beaches
- Informational signage (historical, ecological, restoration, etc.)

## ISSUES AND UNKNOWN UNDER FUTURE CONDITIONS WITH NATURALIZED RIVER

- Unknown extent of natural bottom due to dredging
- Overlying sediment may be contaminated
- Altered hydrologic regime due to urbanization and climate change

