



BOHEMIAN FLATS PARK

MGRP INTERPRETIVE THEME:

The Mississippi River flows through Mississippi Gorge Regional Park like people have flowed through this landscape for thousands of years. The Gorge story is written on the limestone bluffs and heard in the songs and calls of wildlife and people. Here, people connect with nature, themselves, and each other.

MGRP SUBTHEMES BY TOPIC

1. (Spiritual Connection)
The flowing Mississippi River connects us to the waters of the world and to our innermost selves, reminding us to breathe deeply, reflect, and go with the flow.
2. (Geology & River Ecology)
This riverine landscape has been forming and changing for thousands of years. Today, climate change and people are the drivers most affecting this ancient landscape.
3. (Flora/Fauna)
The Gorge is home to plants and animals that thrive in this dynamic landscape—some stay year-round, while others pass through.
4. (Recreation)
Whether active or passive, alone or in groups, park visitors explore every inch of the park and take in its views in all seasons and all weather.
5. (People)
People have been drawn to and through the Gorge for thousands of years—for sustenance and celebration, for work, education, and play.

INTERPRETIVE MEDIA

- A. Welcome Center
Subtheme 1 - Space for active and meditative activities
- B. Festival Space
Subtheme 5 - Celebrate the people who live, work, and learn here now and in the past
- C. Interpretive Play Area
Subtheme 5 - River industries inform the play area design
- D. Interpretive Signage
Subtheme 5: The immigrant communities who lived on Bohemian Flats; option to include audio in English and other languages
- E. Interpretive Signage
Subtheme 1: People/Nature connections, such as the calming effect of flowing water

ADDITIONAL OPPORTUNITIES:

- Interpretation in multiple languages
- Audio interpretation
- Plant and/or animal identification along trails

PRECEDENT PHOTOS





BOHEMIAN FLATS PARK

MGRP INTERPRETIVE THEME:

The Mississippi River flows through Mississippi Gorge Regional Park like people have flowed through this landscape for thousands of years. The Gorge story is written on the limestone bluffs and heard in the songs and calls of wildlife and people. Here, people connect with nature, themselves, and each other.

MGRP SUBTHEMES BY TOPIC

1. (Spiritual Connection)
The flowing Mississippi River connects us to the waters of the world and to our innermost selves, reminding us to breathe deeply, reflect, and go with the flow.
2. (Geology & River Ecology)
This riverine landscape has been forming and changing for thousands of years. Today, climate change and people are the drivers most affecting this ancient landscape.
3. (Flora/Fauna)
The Gorge is home to plants and animals that thrive in this dynamic landscape—some stay year-round, while others pass through.
4. (Recreation)
Whether active or passive, alone or in groups, park visitors explore every inch of the park and take in its views in all seasons and all weather.
5. (People)
People have been drawn to and through the Gorge for thousands of years—for sustenance and celebration, for work, education, and play.

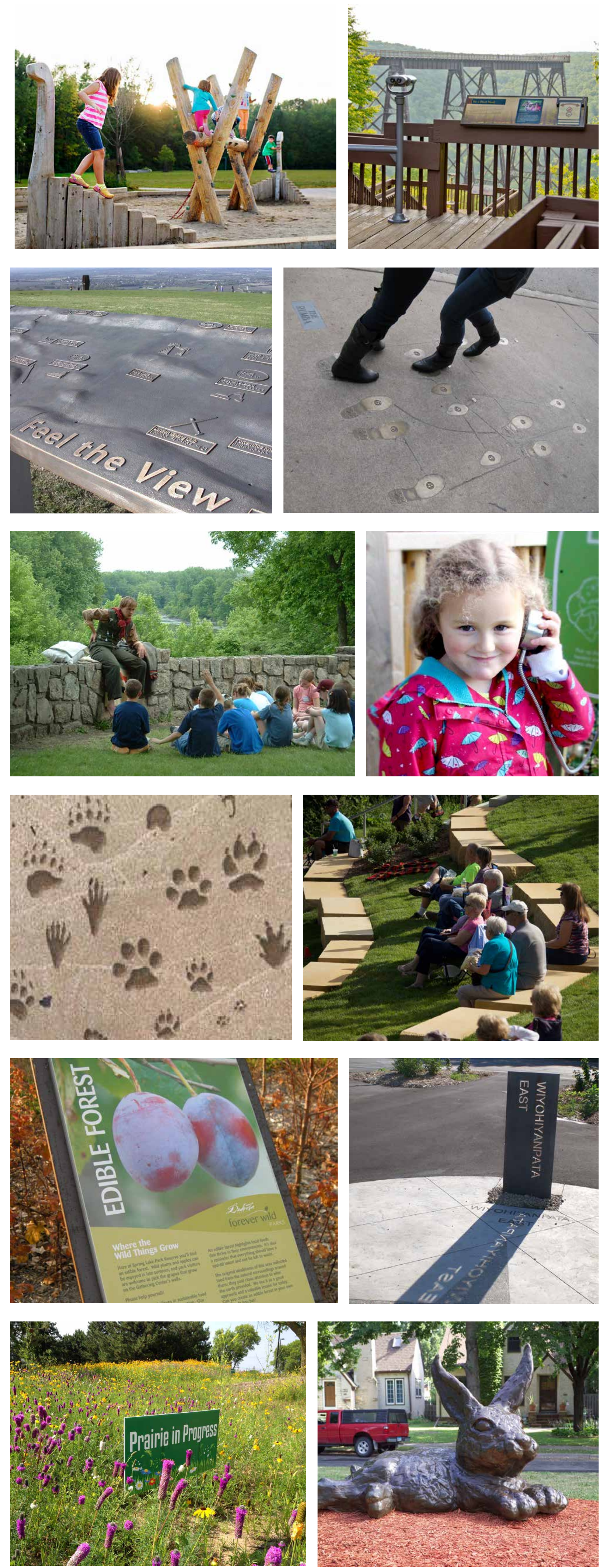
INTERPRETIVE MEDIA

- A. Welcome Center
Subtheme 1 - Space for active and meditative activities
- B. Festival Space
Subtheme 5 - Celebrate the people who live, work, and learn here now and in the past
- C. Interpretive Play Area
Subtheme 5 - River industries inform the play area design
- D. Interpretive Signage
Subtheme 5: The immigrant communities who lived on Bohemian Flats; option to include audio in English and other languages
- E. Interpretive Signage
Subtheme 1: People/Nature connections, such as the calming effect of flowing water

ADDITIONAL OPPORTUNITIES:

- Interpretation in multiple languages
- Audio interpretation
- Plant and/or animal identification along trails

PRECEDENT PHOTOS





ANNIE YOUNG MEADOW & RIVERSIDE PARK

MGRP INTERPRETIVE THEME:

The Mississippi River flows through Mississippi Gorge Regional Park like people have flowed through this landscape for thousands of years. The Gorge story is written on the limestone bluffs and heard in the songs and calls of wildlife and people. Here, people connect with nature, themselves, and each other.

MGRP SUBTHEMES BY TOPIC

- (Spiritual Connection)**
The flowing Mississippi River connects us to the waters of the world and to our innermost selves, reminding us to breathe deeply, reflect, and go with the flow.
- (Geology & River Ecology)**
This riverine landscape has been forming and changing for thousands of years. Today, climate change and people are the drivers most affecting this ancient landscape.
- (Flora/Fauna)**
The Gorge is home to plants and animals that thrive in this dynamic landscape—some stay year-round, while others pass through.
- (Recreation)**
Whether active or passive, alone or in groups, park visitors explore every inch of the park and take in its views in all seasons and all weather.
- (People)**
People have been drawn to and through the Gorge for thousands of years—for sustenance and celebration, for work, education, and play.

INTERPRETIVE MEDIA

- Stewardship Garden**
Subtheme 3 - Pollinator garden
- Peace Garden**
Subtheme 1 - Celebrate Annie Young and welcome everyone, acknowledge the multi-cultural community
- Interpretive Signage**
Subtheme 3: Showcase the old specimen oak trees
- Interpretive Signage**
Subtheme 5: The WPA workers who built many park and parkway structures
- Interpretive Signage or Landscape Element**
Subtheme 5: Park stewardship partners and call to stewardship action

ADDITIONAL OPPORTUNITIES:

- Interpretation in multiple languages
- Audio interpretation
- Plant and/or animal identification along trails

PRECEDENT PHOTOS





EAST RIVER FLATS

MGRP INTERPRETIVE THEME:

The Mississippi River flows through Mississippi Gorge Regional Park like people have flowed through this landscape for thousands of years. The Gorge story is written on the limestone bluffs and heard in the songs and calls of wildlife and people. Here, people connect with nature, themselves, and each other.

MGRP SUBTHEMES BY TOPIC

1. (Spiritual Connection)
The flowing Mississippi River connects us to the waters of the world and to our innermost selves, reminding us to breathe deeply, reflect, and go with the flow.
2. (Geology & River Ecology)
This riverine landscape has been forming and changing for thousands of years. Today, climate change and people are the drivers most affecting this ancient landscape.
3. (Flora/Fauna)
The Gorge is home to plants and animals that thrive in this dynamic landscape—some stay year-round, while others pass through.
4. (Recreation)
Whether active or passive, alone or in groups, park visitors explore every inch of the park and take in its views in all seasons and all weather.
5. (People)
People have been drawn to and through the Gorge for thousands of years—for sustenance and celebration, for work, education, and play.

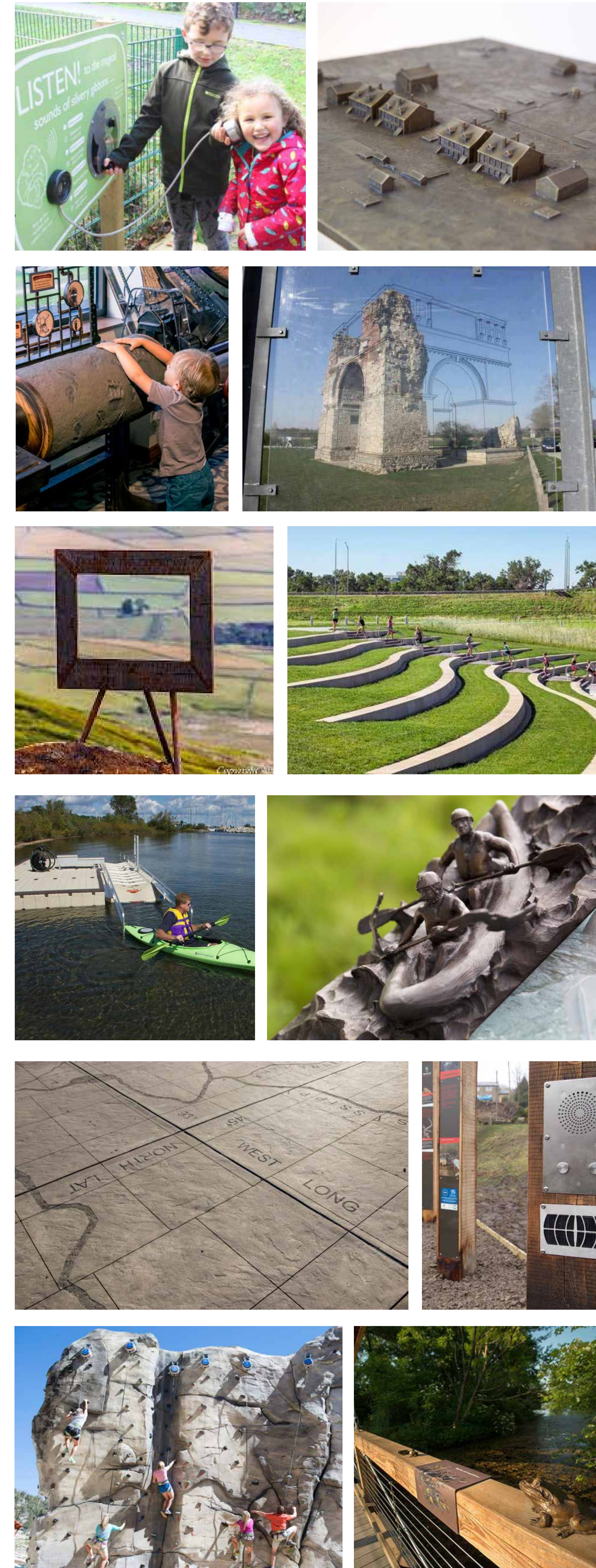
INTERPRETIVE MEDIA

- A. Climbing Wall
Subtheme 2 - Highlight Gorge geology-climb through time
- B. View Through or Interpretive Signage
Subtheme 5 - Showcase Cass Gilbert's UMN design that connected the University to the river
- C. Interpretive Signage
Subtheme 2: Highlight the geologic and ecologic features along the boardwalk to Franklin Flats
- D. Integrated Element (stepped seating area)
Subtheme 2: Highlight the river level over time
- E. Interpretive Signage or Landscape Element
Subtheme 4: Celebrate the wide variety of recreational opportunities throughout the park

ADDITIONAL OPPORTUNITIES:

- Interpretation in multiple languages
- Audio interpretation
- Plant and/or animal identification along trails
- Mississippi River Gorge meander, contemporary and historic, etched in concrete

PRECEDENT PHOTOS



FRANKLIN FLATS

MGRP INTERPRETIVE THEME:

The Mississippi River flows through Mississippi Gorge Regional Park like people have flowed through this landscape for thousands of years. The Gorge story is written on the limestone bluffs and heard in the songs and calls of wildlife and people. Here, people connect with nature, themselves, and each other.

MGRP SUBTHEMES BY TOPIC

- (Spiritual Connection)**
The flowing Mississippi River connects us to the waters of the world and to our innermost selves, reminding us to breathe deeply, reflect, and go with the flow.
- (Geology & River Ecology)**
This riverine landscape has been forming and changing for thousands of years. Today, climate change and people are the drivers most affecting this ancient landscape.
- (Flora/Fauna)**
The Gorge is home to plants and animals that thrive in this dynamic landscape—some stay year-round, while others pass through.
- (Recreation)**
Whether active or passive, alone or in groups, park visitors explore every inch of the park and take in its views in all seasons and all weather.
- (People)**
People have been drawn to and through the Gorge for thousands of years—for sustenance and celebration, for work, education, and play.

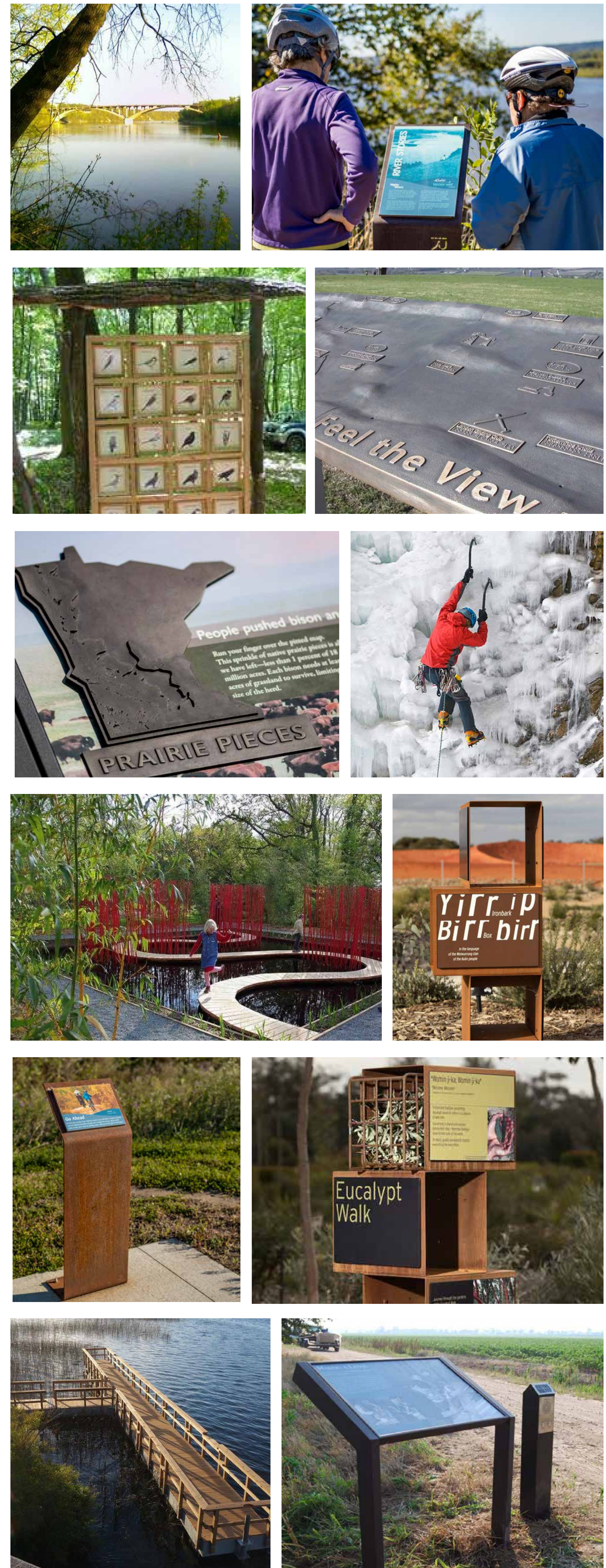
INTERPRETIVE MEDIA

- A. Interpretive Signage or Landscape Element
Subtheme 2: Highlight river ecology and acknowledge neighborhood stewards
- B. View Through
Subtheme 2 - Showcase view of the white sand beach
- C. Interpretive Signage
Subtheme 2: Meeker Dam
- D. Interpretive Signage
Subtheme 4: Bridal Veil Falls
- E. Interpretive Signage or Landscape Element
Subtheme 3: Plant identification

ADDITIONAL OPPORTUNITIES:

- Interpretation in multiple languages
- Audio interpretation
- Animal identification along trails

PRECEDENT PHOTOS





OAK SAVANNA

MGRP INTERPRETIVE THEME:

The Mississippi River flows through Mississippi Gorge Regional Park like people have flowed through this landscape for thousands of years. The Gorge story is written on the limestone bluffs and heard in the songs and calls of wildlife and people. Here, people connect with nature, themselves, and each other.

MGRP SUBTHEMES BY TOPIC

- (Spiritual Connection)**
The flowing Mississippi River connects us to the waters of the world and to our innermost selves, reminding us to breathe deeply, reflect, and go with the flow.
- (Geology & River Ecology)**
This riverine landscape has been forming and changing for thousands of years. Today, climate change and people are the drivers most affecting this ancient landscape.
- (Flora/Fauna)**
The Gorge is home to plants and animals that thrive in this dynamic landscape—some stay year-round, while others pass through.
- (Recreation)**
Whether active or passive, alone or in groups, park visitors explore every inch of the park and take in its views in all seasons and all weather.
- (People)**
People have been drawn to and through the Gorge for thousands of years—for sustenance and celebration, for work, education, and play.

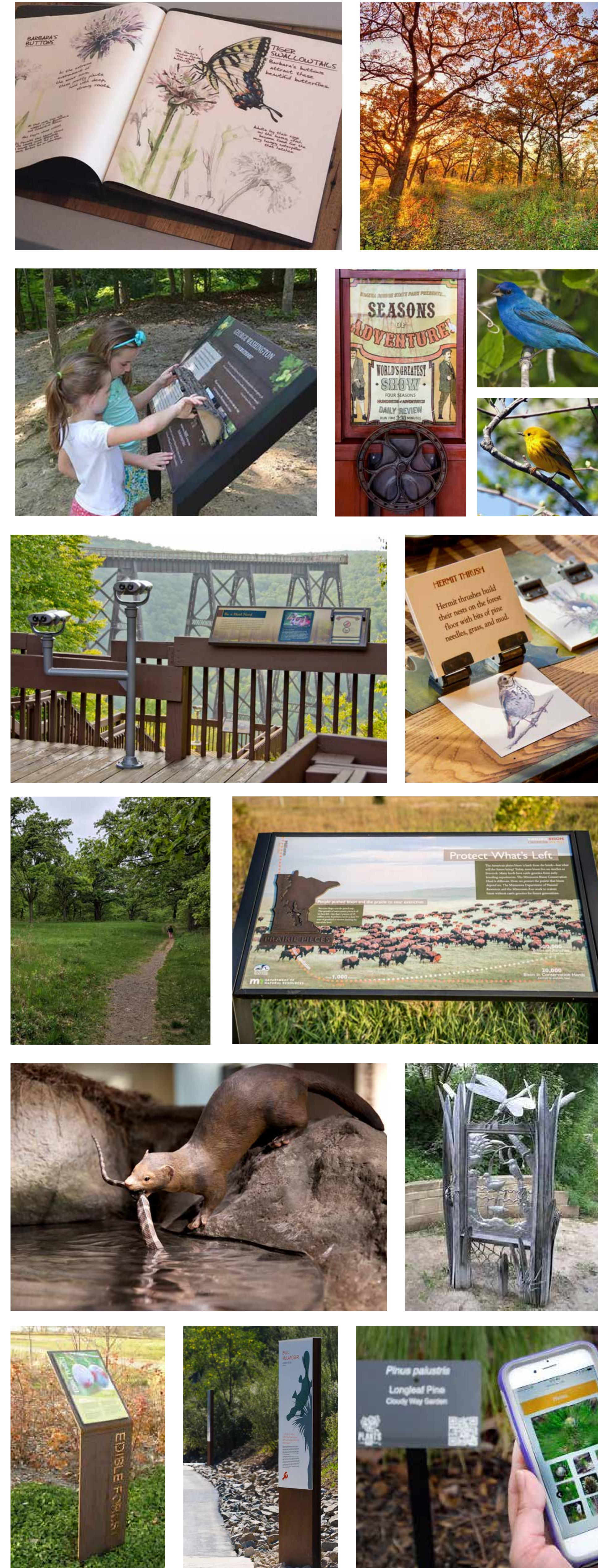
INTERPRETIVE MEDIA

- A. Binoculars and Birding Book**
Subtheme 3 - Feature Gorge birds in a multi-page, outdoor flipbook, with dual base binoculars for ADA compliance
- B. Interpretive Signage**
Subtheme 5 - Winchell Trail (HW Cleveland Trail)
- C. Interpretive Signage or Landscape Element**
Subtheme 3: Highlight the oak savannah and remnant prairie
- D. Interpretive Signage or Landscape Element**
Subtheme 5: Celebrate the MPRB forestry management practices and partners

ADDITIONAL OPPORTUNITIES:

- Interpretation in multiple languages
- Audio interpretation
- Plant and/or animal identification along trails

PRECEDENT PHOTOS





LONGFELLOW FLATS / BEACH

MGRP INTERPRETIVE THEME:

The Mississippi River flows through Mississippi Gorge Regional Park like people have flowed through this landscape for thousands of years. The Gorge story is written on the limestone bluffs and heard in the songs and calls of wildlife and people. Here, people connect with nature, themselves, and each other.

MGRP SUBTHEMES BY TOPIC

1. (Spiritual Connection)
The flowing Mississippi River connects us to the waters of the world and to our innermost selves, reminding us to breathe deeply, reflect, and go with the flow.
2. (Geology & River Ecology)
This riverine landscape has been forming and changing for thousands of years. Today, climate change and people are the drivers most affecting this ancient landscape.
3. (Flora/Fauna)
The Gorge is home to plants and animals that thrive in this dynamic landscape—some stay year-round, while others pass through.
4. (Recreation)
Whether active or passive, alone or in groups, park visitors explore every inch of the park and take in its views in all seasons and all weather.
5. (People)
People have been drawn to and through the Gorge for thousands of years—for sustenance and celebration, for work, education, and play.

INTERPRETIVE MEDIA

- A. Binoculars and Birding Book
Subtheme 3 - Feature Gorge birds in a multi-page, outdoor flipbook, with dual base binoculars for ADA compliance
- B. Interpretive Signage
Subtheme 2 - Show the beach and its views
- C. Interpretive Signage
Subtheme 2: Stormwater management (What's that smell?)
- D. Interpretive Signage or Landscape Element
Subtheme 3: Plant identification
- E. Interpretive Signage or Landscape Element
Subtheme 1: Celebrate the people/nature connection

ADDITIONAL OPPORTUNITIES:

- Interpretation in multiple languages
- Audio interpretation
- Plant and/or animal identification along trails

PRECEDENT PHOTOS

