



# SOUTHWEST LRT

# STATION AREA PLANNING

**GET INVOLVED AND HELP SHAPE THE FUTURE OF TRANSIT AND DEVELOPMENT IN YOUR COMMUNITY!**

As you may know, light rail transit (LRT) is coming to your community in 2018.

To take advantage of the benefits of light rail, station area planning is now underway in each city along the planned LRT line. Good stations will create a unique sense of place and integrate with the surrounding community.

The Open House will begin with a brief overview of the Southwest LRT project and the Station Area Planning process. Attendees will also have the chance to review initial station area concepts and provide feedback on:

- » Connections via sidewalks, trails, buses and roadway
- » Community facilities/amenities to be served
- » Jobs and education facilities to be served
- » How the stations can blend with the community

Public comments received will be used to guide continuing planning efforts for the station areas.

## MINNEAPOLIS - OPEN HOUSE



**THURSDAY - MAY 2, 2013  
(6:00P.M. - 8:00P.M.)**



**BRYN MAWR ELEMENTARY SCHOOL (AUDITORIUM)  
252 UPTON AVENUE S, MINNEAPOLIS**

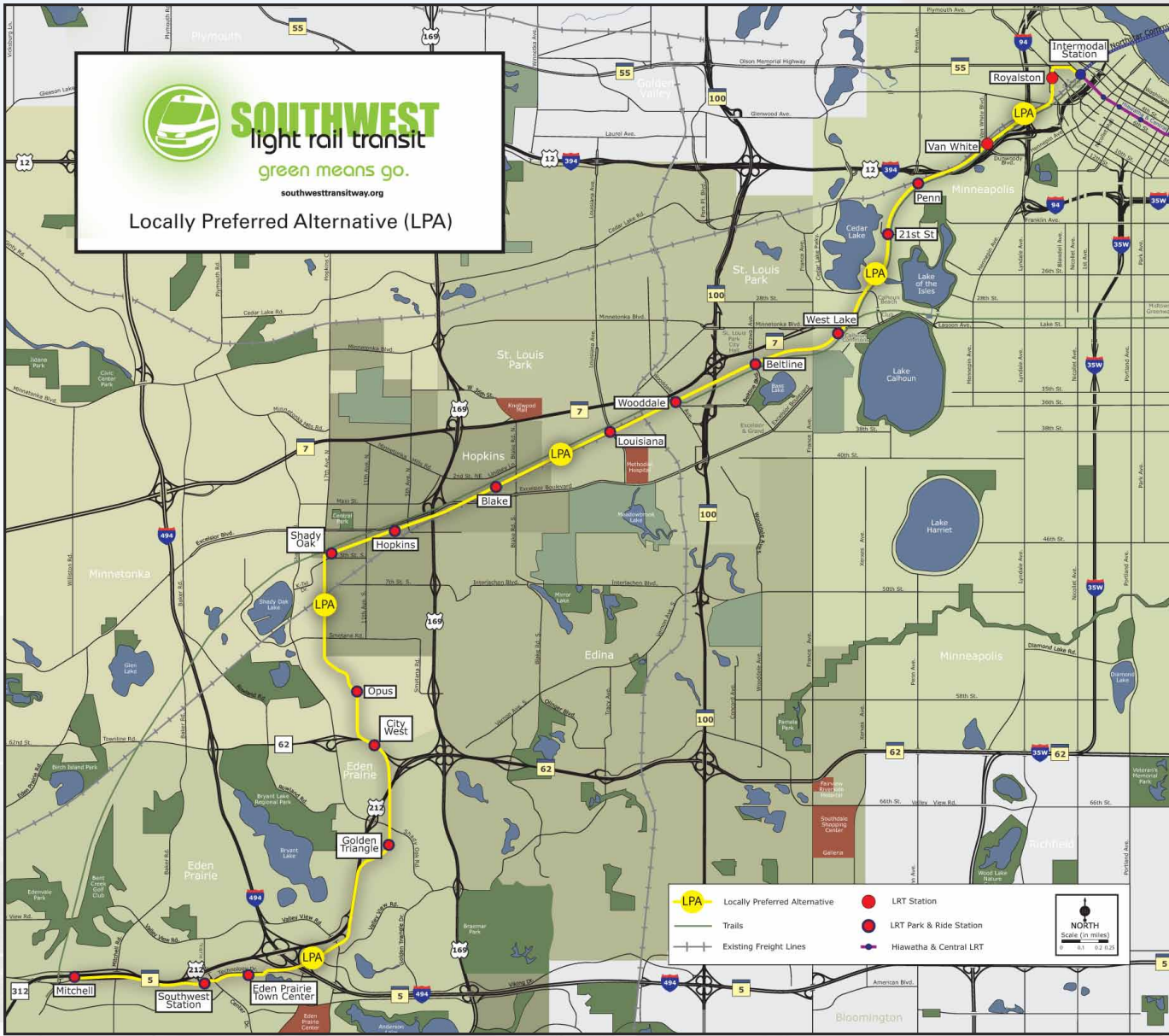
SOUTHWEST LRT  
community works





**SOUTHWEST**  
light rail transit  
green means go.  
southwesttransitway.org

Locally Preferred Alternative (LPA)



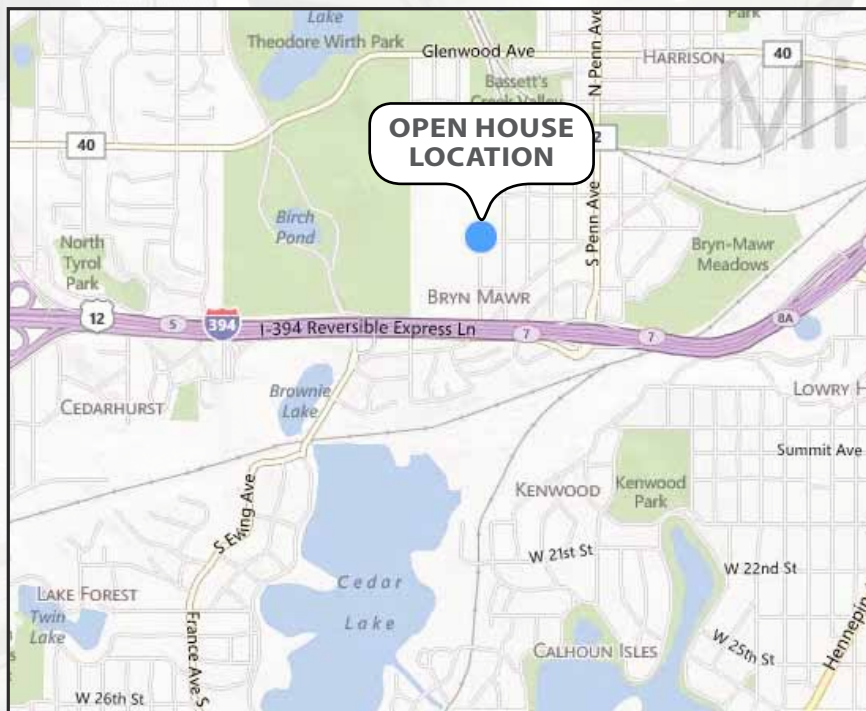
## ARE YOU PLANNING ON TAKING TRANSIT TO THE OPEN HOUSE?

TAKE ONE OF THESE ROUTES:

**BUS 9**



<http://metrotransit.org/tripplanner/>



**FOR MORE INFORMATION**

<http://www.southwesttransitway.org/home>

