

MPRB Community Advisory Committee for Southwest LRT Transit Project

20 January 2010



CAC Charge from Park Board

Prepare recommendations to the Board on the contents of a formal Comment Letter in response to the Draft Environmental Impact Statement for the proposed Southwest Light Rail Transit Alternative 3A.

The recommendations of the CAC shall focus on desired outcomes relative to historical, cultural, visual, recreational, social, environmental, and safety issues as they relate to lands owned or managed by the Minneapolis Park and Recreation Board.



CAC Members

<i>Appointing Person or Group</i>	<i>Appointee</i>
Board President John Erwin	Scott Neiman, Chair
Commissioner Anita Tabb, District 4	Eric Sjoding
Commissioner Brad Bourn, District 6	Kendal Killian
Commissioner Annie Young, At-large	Caitlin Compton
Commissioner Bob Fine, At-large	Matt Perry
Bryn Mawr Neighborhood Association	Barry Schade
Cedar-Isles-Dean Neighborhood Association	John Erickson
Cedar Lake Park Association	Brian Willette
Kenwood Isles Area Association	Jeanette Colby
Lowry Hill Neighborhood Association	George Puzak
West Calhoun Neighborhood Council	Meg Forney
Harrison Neighborhood Association	Maren McDonell
Henn Co Commissioner Dorfman	Tim Springer
Council Member Goodman – Wd 7	Neil Trembley
Council Member Tuthill – Wd 1	D’Ann Topoluk
Council Member Hodges – Wd 13	Ben Hecker
Council Member Samuels – Wd 5	Vicki Moore
Mayor Rybak	Jerry Van Amerongen



CAC Role

The CAC will focus on the DEIS sections that identify the environmental and community effects of Alternative 3A on Minneapolis parks and park users, and ways to avoid, minimize, or mitigate adverse impacts. The CAC will look at desired outcomes relative to historical, cultural, visual, recreational, social, environmental, and safety issues.



Grand Rounds Corridor Boundaries

The corridor boundaries of the Grand Rounds Scenic Byway include the following areas:

- The traveled roadway and its various intersections with crossing streets—owned primarily by the Minneapolis Park and Recreation Board (MPRB).
- The parkway right-of-way associated with the portions of the parkway designated as a scenic byways—owned primarily by the MPRB.
- Adjoining park lands, pedestrian and bicycle trails open spaces including lakes and wetlands—owned by the MPRB.
- Land areas and development seen from the traveled roadway of the scenic byway—owned by private owners.

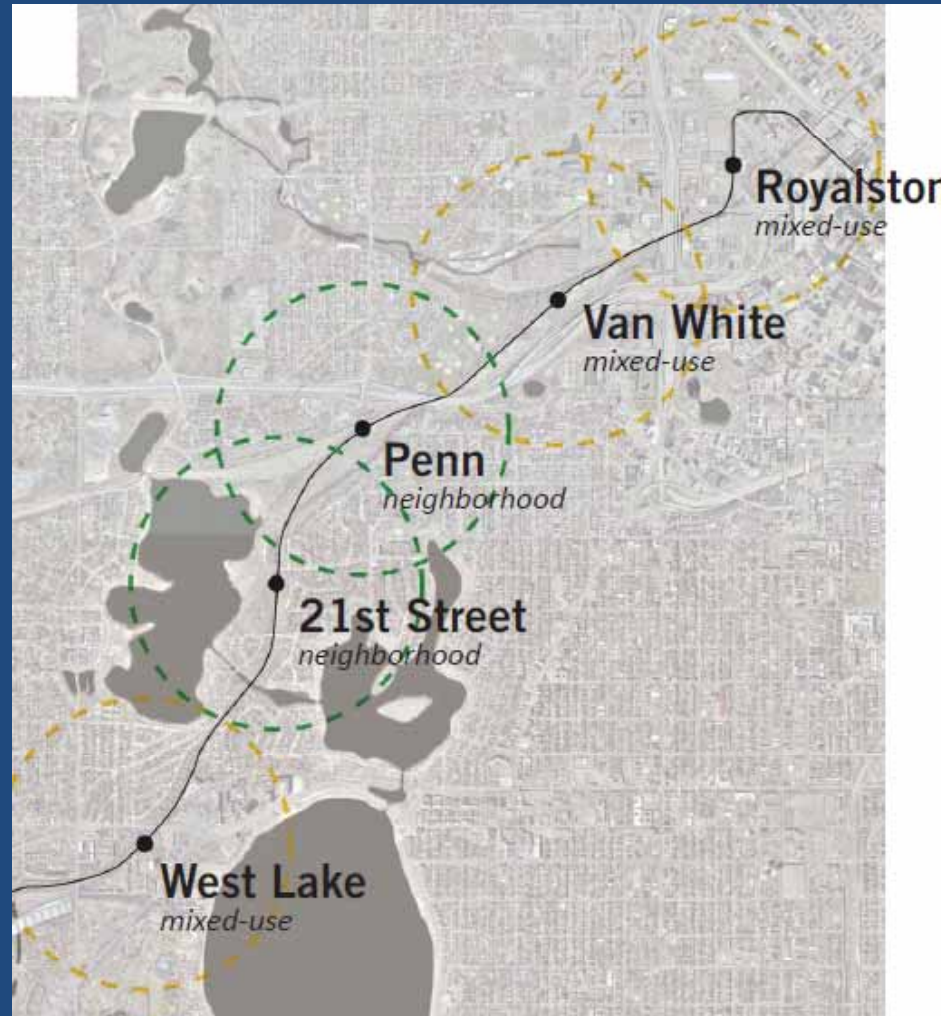
Source: Grand Rounds Corridor Plan



Location 8: Connection to Spring Lake, Kenwood Parkway, Parade



Station Area Locations

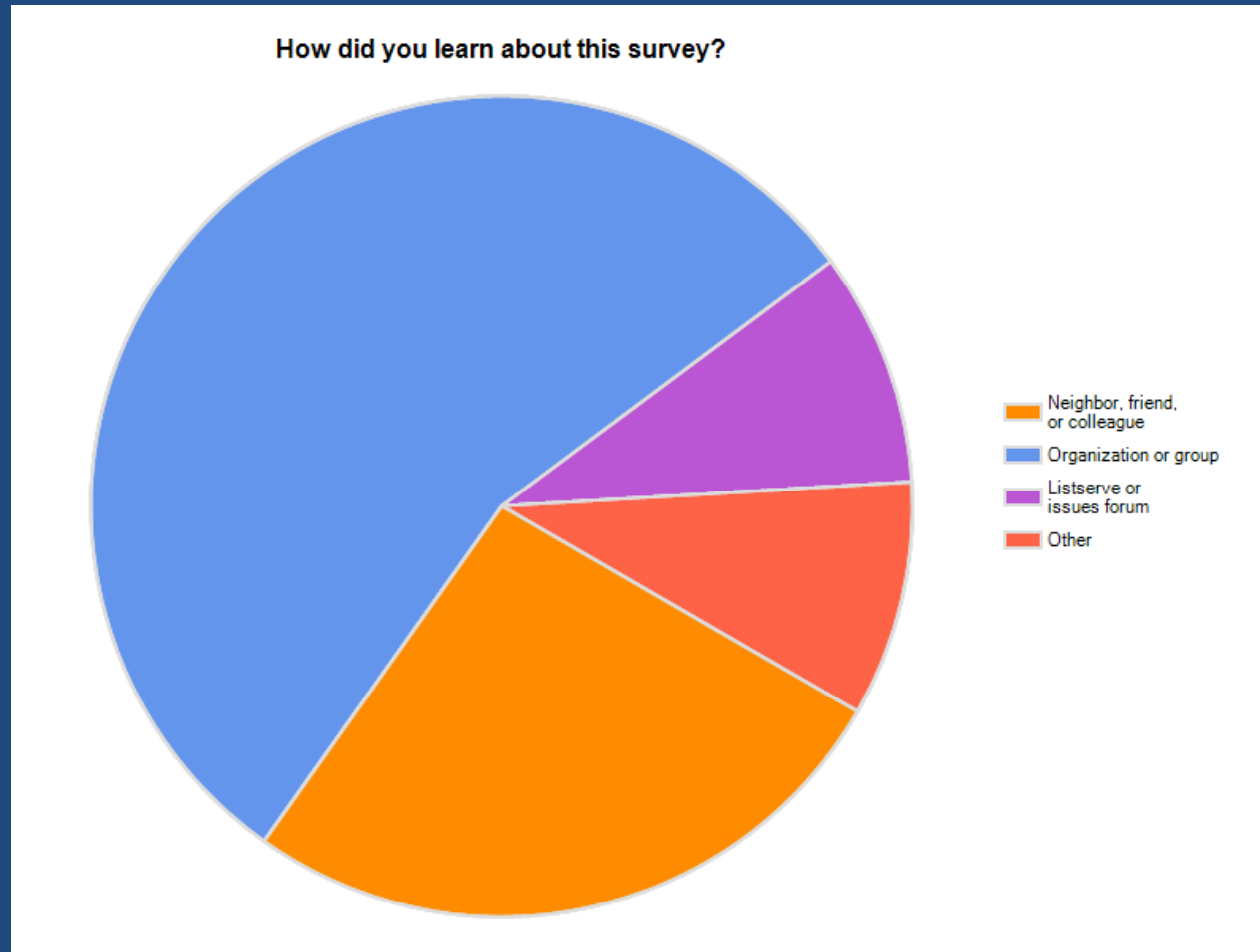


Community Input on SW LRT CAC Draft Issues and Outcomes

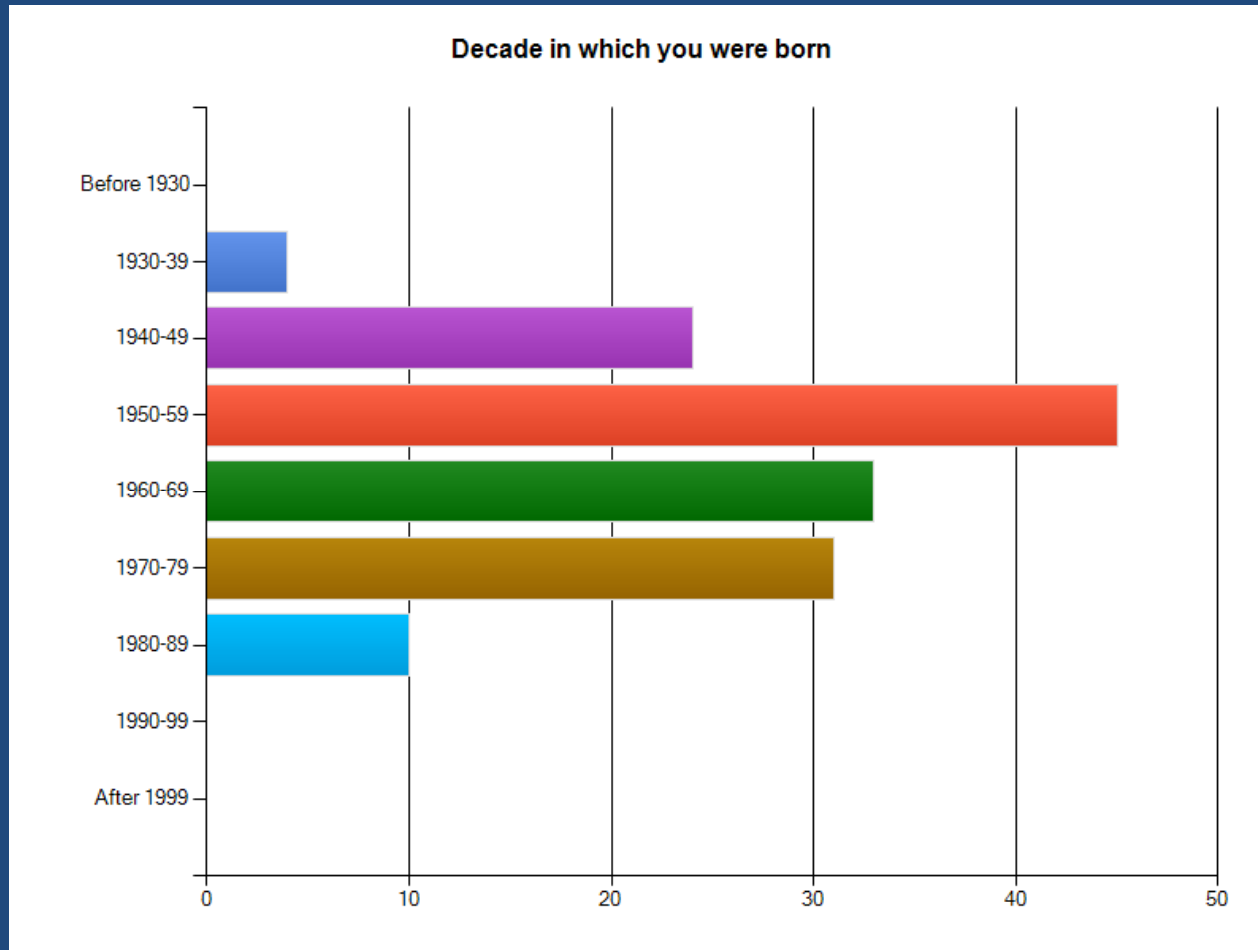
- Survey Data
 - Illustrative Charts.
 - Text from comments.
 - 160 Participants as of January 7, 2011 started the survey, 56 finished the survey in its entirety.



How did you learn about this Survey?



Decade in which you were born



Your Home Language?

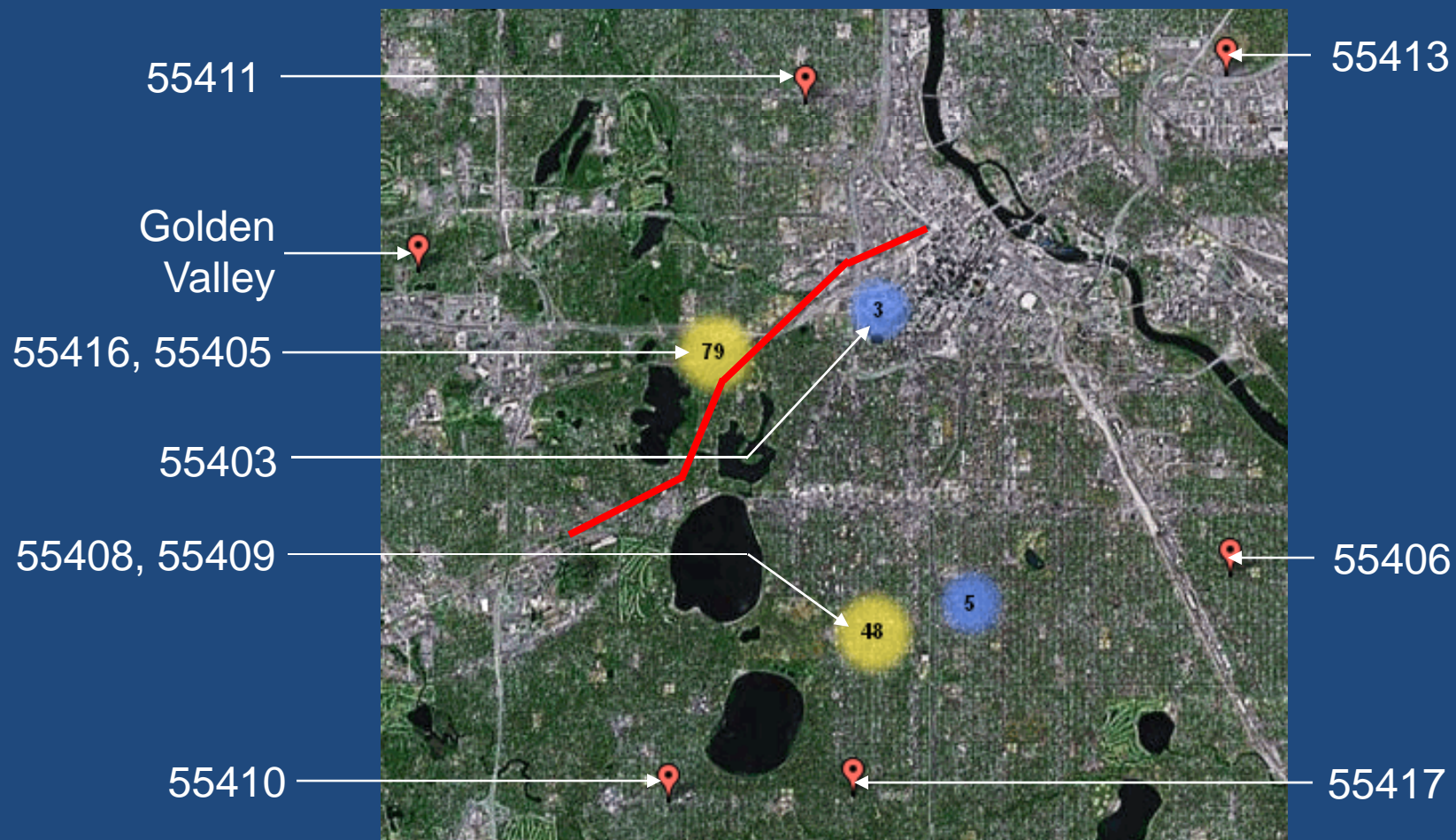
- All survey participants chose English as their home language with one exception who had Spanish in addition to English.

Race/ Ethnicity

- 140 (96%) of survey participants who answered this question identify themselves as white or Caucasian.
- 2 participants identified as Asian, 1 as African American, and 2 as Hispanic or Latino.



What zip code do the participants live?



How could any of the issues and outcomes be strengthened or improved?

What issues or outcomes are missing?

- These questions were asked about:
 - The entire corridor
 - Calhoun Executive Center
 - Trail access at Abbott Ave S.
 - Park Siding Park
 - Cedar Lake Parkway and the Grand Rounds
 - Kenilworth Channel Bridge
 - Intersection with 21st Street
 - Cedar Lake Trail Junction
 - Bryn Mawr Meadows Park
 - Spring Lake Trail Junction
 - Linden Avenue



THANK YOU!

