

Roberts Bird Sanctuary Improvements Project

Meeting #3 - August 10, 2016



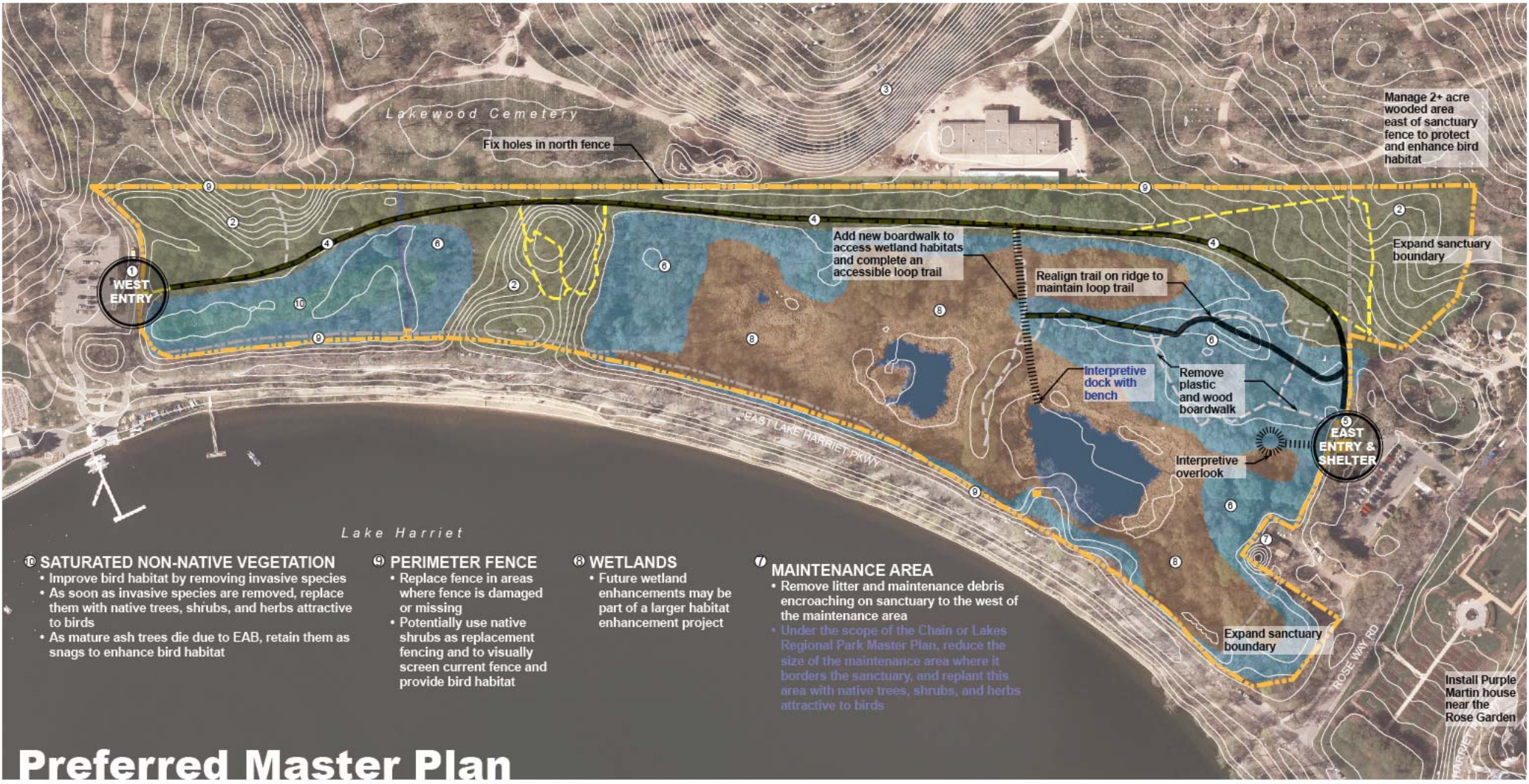
WILLIAM BERRY WOODS
(off map to NW)
• Manage to protect and enhance bird habitat

- ① WEST ENTRY**
- Implement interpretive displays that communicate the importance of avian habitat and species
 - Create traffic calming measures for safe access to sanctuary
 - Create dynamic experience for all users
 - Identify a clear entry portal to sanctuary
 - Plant native shrubs and perennials attractive to birds
 - Remove invasive plant species on north side of entry
 - Build accessible ramp outside current fence line

- ② MAPLE BASSWOOD UPLAND HABITAT**
- Improve high quality habitat areas by removing invasive species
 - As soon as invasive species are removed, replace them with native trees, shrubs, and herbs attractive to birds

- ③ LAKEWOOD CEMETERY**
- Work with Lakewood Cemetery to add bluebird house adjacent to sanctuary

- ④ BOSSEN LANE**
- Maintain 2015 native plantings along the lane by watering, and monitoring for animal browse impacts
 - Ensure MCES maintains trail surfacing for pedestrian access
 - Install benches along lane every 500 feet



- ⑩ SATURATED NON-NATIVE VEGETATION**
- Improve bird habitat by removing invasive species
 - As soon as invasive species are removed, replace them with native trees, shrubs, and herbs attractive to birds
 - As mature ash trees die due to EAB, retain them as snags to enhance bird habitat

- ④ PERIMETER FENCE**
- Replace fence in areas where fence is damaged or missing
 - Potentially use native shrubs as replacement fencing and to visually screen current fence and provide bird habitat

- ⑥ WETLANDS**
- Future wetland enhancements may be part of a larger habitat enhancement project

- ⑦ MAINTENANCE AREA**
- Remove litter and maintenance debris encroaching on sanctuary to the west of the maintenance area
 - Under the scope of the Chain or Lakes Regional Park Master Plan, reduce the size of the maintenance area where it borders the sanctuary, and replant this area with native trees, shrubs, and herbs attractive to birds

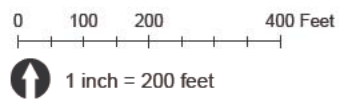
- ⑤ EAST ENTRY**
- Open north wall to sanctuary to activate space and engage sanctuary users, preserve all other wall openings
 - Implement interpretive displays that communicate the importance of avian habitat and species
 - Create dynamic experience for all users
 - Identify a clear entry portal to sanctuary and distinct entry to Japanese Garden
 - Plant native shrubs and perennials attractive to birds by building and adjacent to reconfigured entry trail
 - Minimize turf grass areas
 - Provide ADA accessible experience

- ⑥ SEMI FLOODED NON-NATIVE VEGETATION**
- Improve bird habitat by removing invasive species
 - As soon as invasive species are removed, replace them with native trees, shrubs, and herbs attractive to birds
 - As mature ash trees die due to EAB, retain them as snags to enhance bird habitat

Preferred Master Plan

Roberts Bird Sanctuary

- existing paths to remain
- proposed trail loop
- proposed boardwalk
- remove trail
- existing perimeter fence
- proposed perimeter boundary
- Maple Basswood Upland Habitat
- Saturated Non-Native Vegetation
- Semi Flooded Non-Native Vegetation
- Wetlands
- Open Water



August 10, 2016

DESIGN FRAMEWORK

- Protect avian population
- Perpetuate avian habitat for enjoyment by people
- Create a memorable arrival experience and improve visitor orientation
- Reconfigure building to engage sanctuary and activate space
- Create a dynamic and accessible birding facility that brings visitors of all abilities into the sanctuary
- Implement interpretive displays that communicate the importance of avian habitat and species
- Identify a clear entry portal to Roberts Bird Sanctuary and distinct entry to the Peace Gardens
- Plant habitat supportive native species

Phase Two Bird Walk

East Entry Plan



0 10 20 40 Feet

- ① Gravel entry path into Sanctuary
- ② Entry fence - 6' black chain link
- ③ Sanctuary entry sign
- ④ Peace Garden entry sign

- ⑤ Entry path into Peace Garden
- ⑥ Low decorative fence
- ⑦ Timber benches
- ⑧ Interpretive kiosk

- ⑨ Fieldstone boulder wall
- ⑩ Interpretive bird walk
- ⑪ Open north wall of shelter
- ⑫ Native plantings

- ⑬ Accessible ramp
- ⑭ Reconfigured accessible parking stalls and bike racks
- ⑮ Maintenance gate and fence, 6' black chain link
- ⑯ Gravel trail connection to Bossen Lane
- ⑰ Trial fedge area

Roberts Bird Sanctuary

August 10, 2016



East Entry Photo Illustration

DESIGN FRAMEWORK

- Protect avian population
- Perpetuate avian habitat for enjoyment by people
- Improve gated access
- Implement interpretive displays that communicate the importance of avial habitat and species
- Identify a clear entry portal to Roberts Bird Sanctuary
- Plant habitat supportive native species
- Create an accessible birding facility that brings visitors of all abilities into the sanctuary
- Provide a 5% ramp to entry using land fully outside existing sanctuary fence
- Provide traffic calming measures for safety



West Entry Plan



① Existing chain link fence

② Accessible entry at 5% grade with landing

③ Native plantings, Big Tooth Aspen expansion

④ 6' black chain link fence

⑤ Existing Bossen Lane

⑥ West Entry arbor

⑦ Concrete stair with handrails and landing

⑧ Enhanced pedestrian crossing

⑨ Interpretive kiosk

⑩ Bike racks

⑪ Sanctuary entry sign

⑫ Accessible parking stall

⑬ Maintenance gate and fence, 6' black chain link

⑭ Protect Big Tooth Aspen

Roberts Bird Sanctuary

August 10, 2016



West Entry Photo Illustration

A high-contrast, black and white silhouette of a bird perched on a branch. The bird is facing left, with its head slightly turned. The branch is thick and dark, with several thinner, more delicate branches visible in the background. The background is a light, warm tone, possibly a sky or a wall, with soft shadows of the branches. The overall composition is minimalist and artistic.

Thank you - Questions?

Meeting #3 - August 10, 2016