



Concept Plan Approval
Bassett's Creek Park Play Area and Site Improvements Project

Public Hearing - January 4, 2017

Resolution Overview

Resolution considers the approval of the recommended Preferred Concept Plan for site and playground improvements at Bassett's Creek Park in the Bryn Mawr Neighborhood of Minneapolis

Park Site

Bassett's Creek Park is split between the Bryn Mawr Neighborhood and the Harrison Neighborhood and between Commissioner Districts 4 and 2.



Existing Landscape - North



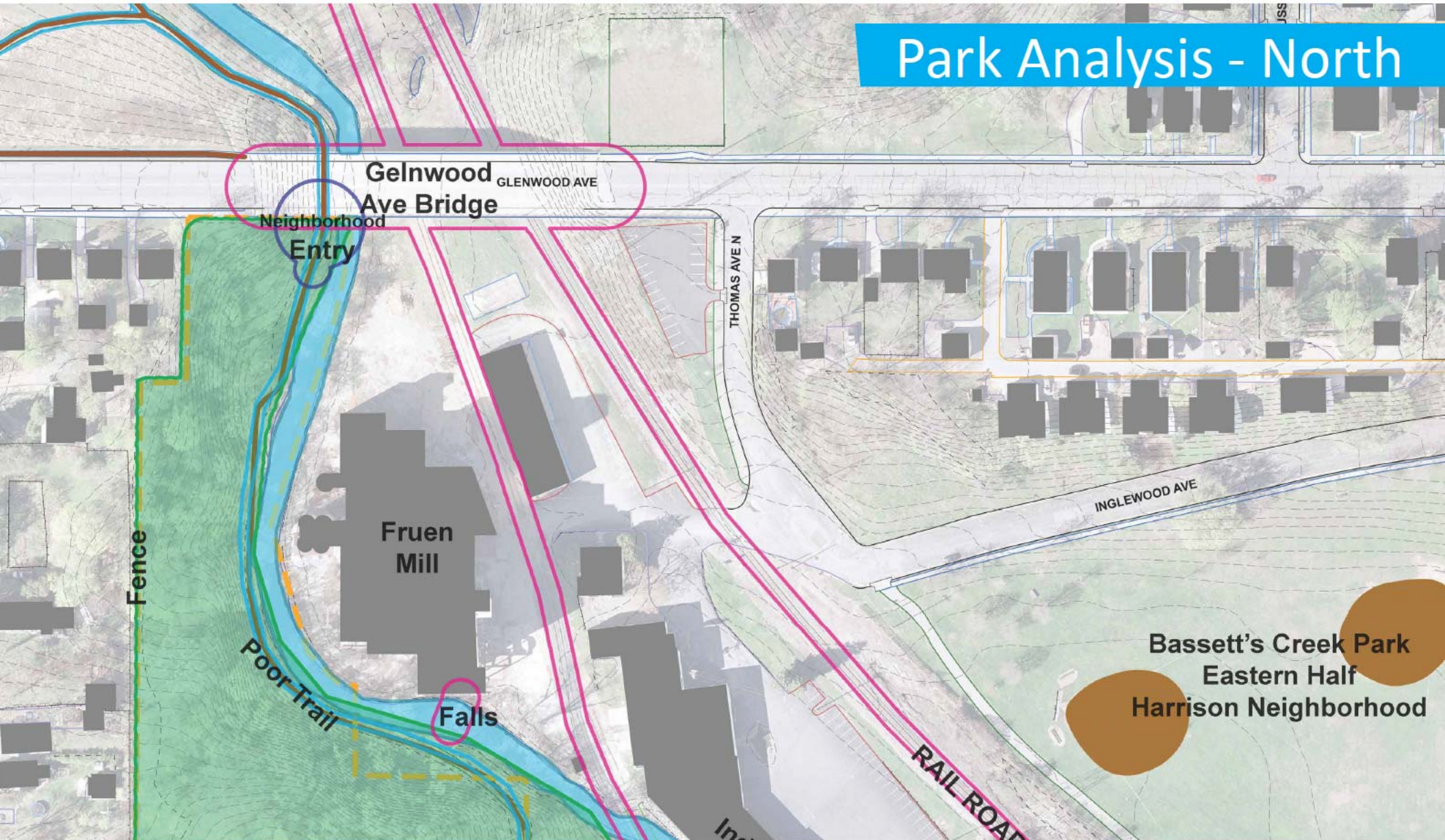
Minneapolis Park and Recreation Board
Bassett's Creek Park Play Area and Site Improvements Project

Existing Landscape - South



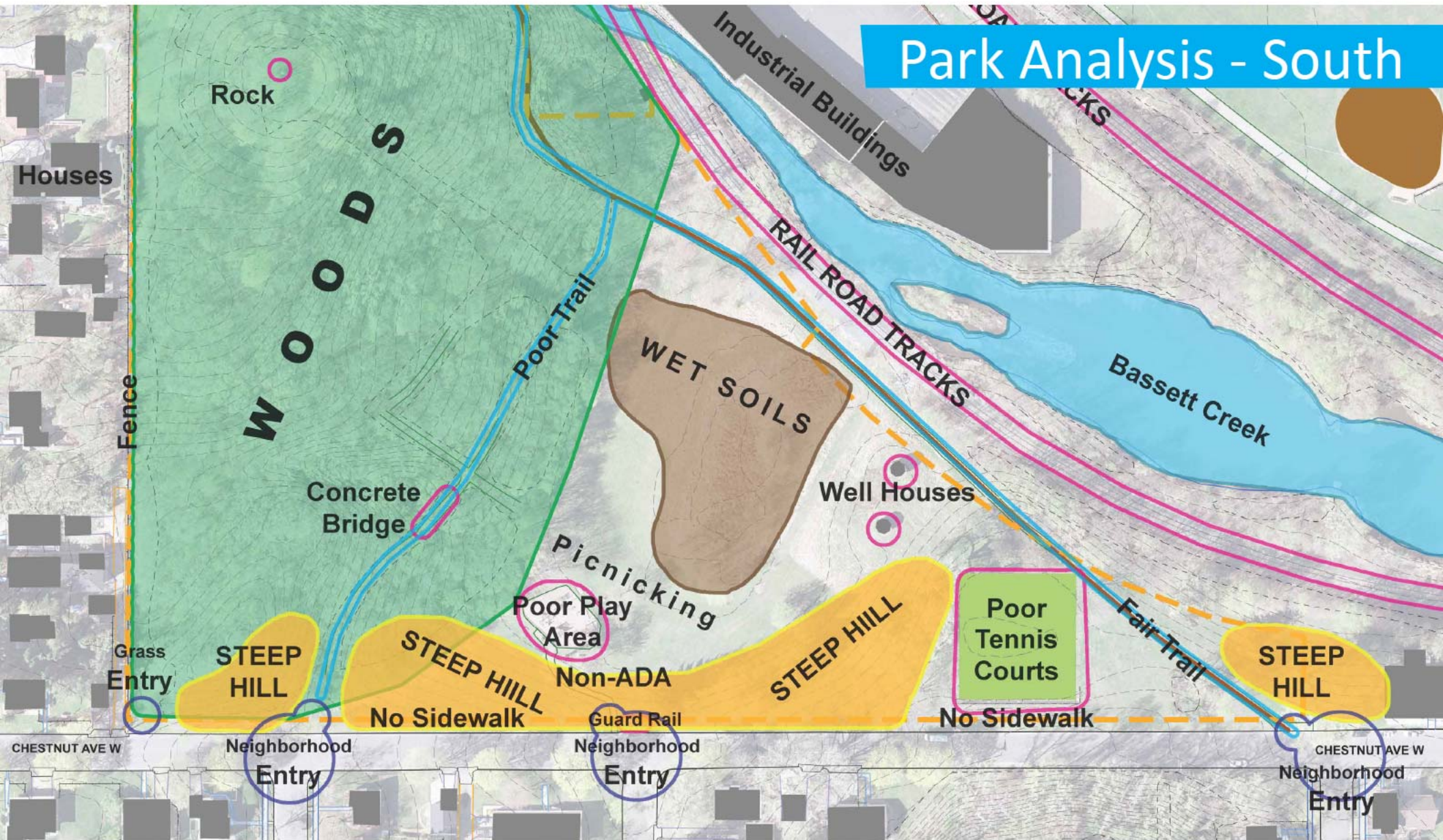
Minneapolis Park and Recreation Board
Bassett's Creek Park Play Area and Site Improvements Project

Park Analysis - North



Minneapolis Park and Recreation Board
Bassett's Creek Park Play Area and Site Improvements Project

Park Analysis - South



Minneapolis Park and Recreation Board
Bassett's Creek Park Play Area and Site Improvements Project



Playground built in 1989 - 27 yrs



Out of date safety standards



Aging equipment



No sidewalks along Chestnut Ave





Bridge over gully in the woods



Stairway in the woods



New curb ramp and storm drain



Falls along Bassett Creek



Project Overview

- » Play area and site improvements for areas of the park in the Bryn Mawr Neighborhood
- » Elements this project focused on are:
 - Play Area Container and Equipment
 - Picnic Area
 - ADA Accessibility to Play Area and Picnic Area
 - Improved Access from Neighborhoods

Expanded Play Concept - May 2016



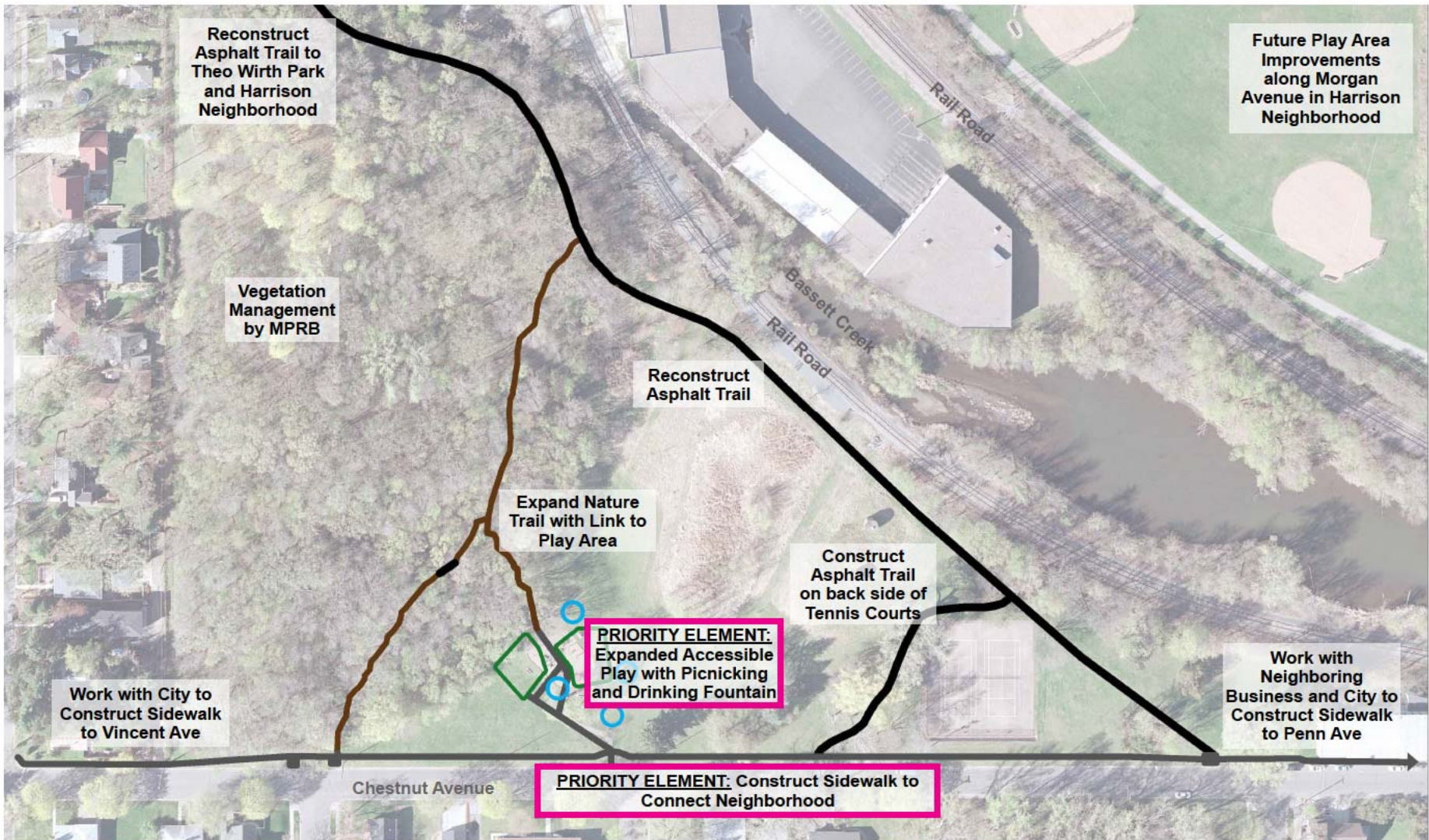
Minneapolis Park and Recreation Board
Bassett's Creek Park Play Area and Site Improvements Project

Woodland Play Concept - May 2016



Minneapolis Park and Recreation Board
Bassett's Creek Park Play Area and Site Improvements Project

Preferred Concept Plan Diagram

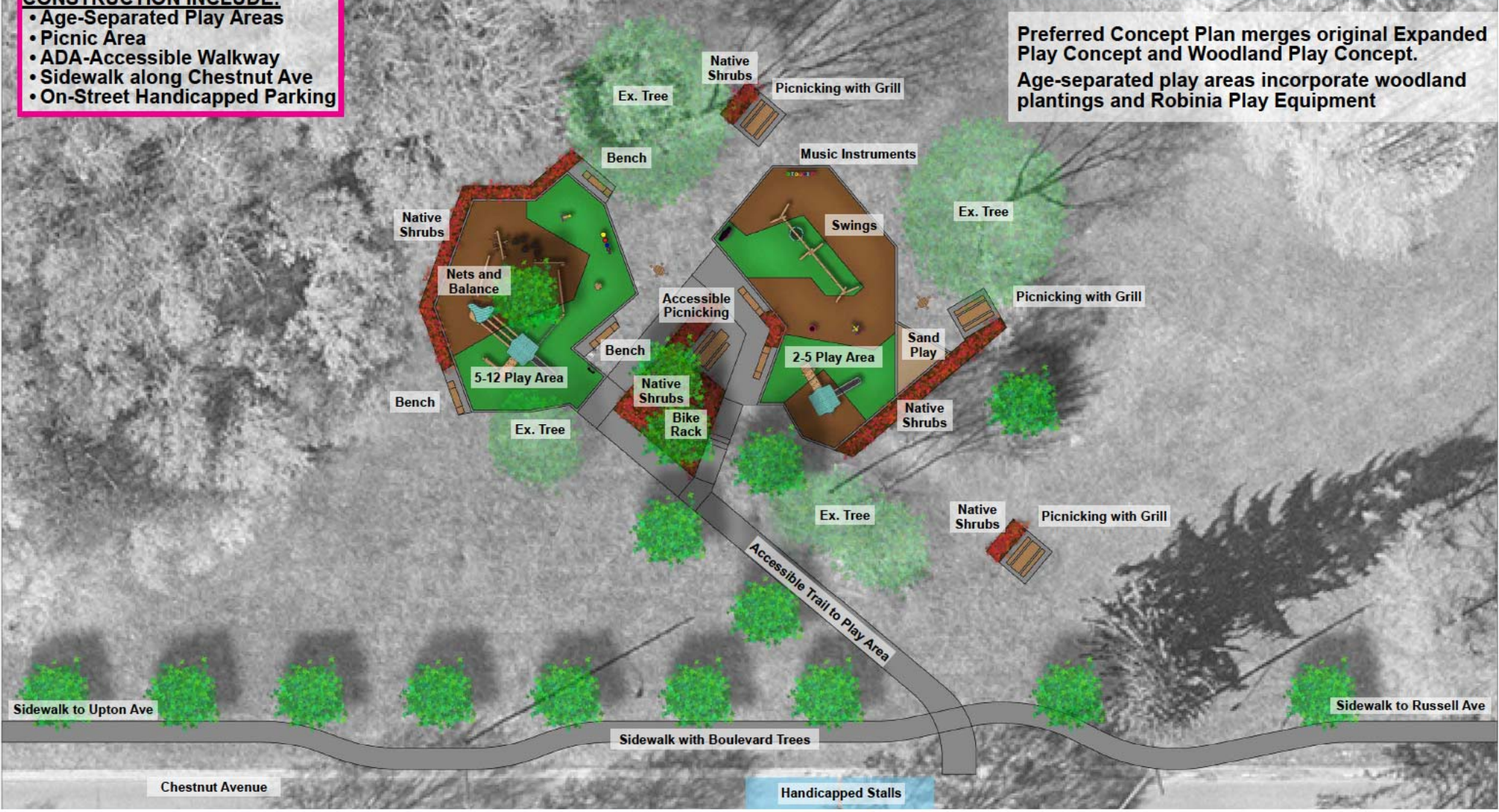


Minneapolis Park and Recreation Board
Bassett's Creek Park Play Area and Site Improvements Project

Preferred Concept Plan

- PRIORITY ELEMENTS FOR 2017 CONSTRUCTION INCLUDE:**
- Age-Separated Play Areas
 - Picnic Area
 - ADA-Accessible Walkway
 - Sidewalk along Chestnut Ave
 - On-Street Handicapped Parking

Preferred Concept Plan merges original Expanded Play Concept and Woodland Play Concept. Age-separated play areas incorporate woodland plantings and Robinia Play Equipment



Preferred Equipment - Robina by Kompan



Artistic and woody Robinia equipment will blend into Bassett's Creek Park's natural character.

Robinia equipment line is from Kompan and is made from the Black Locust tree, a naturally decay and rot resistant hardwood. No wood preservatives needed.



Minneapolis Park and Recreation Board
Bassett's Creek Park Play Area and Site Improvements Project

Project Timeline

Fall 2015 - Spring 2016

- » Site Survey, Inventory, and Analysis
- » Project Introduction at Bryn Mawr Neighborhood Meeting
- » Completed the Community Engagement Plan
- » PAC Meeting #1

Summer 2016

- » Public Meeting #1 - May 26, 2016
- » Intercept survey over two days at Wirth Beach Play Area (31 participants)
- » Online survey (48 participants)
- » Draft Concept Creation
- » Public Meeting #2 - September 6, 2016
- » PAC Meeting #2
- » Preferred Concept Creation

Now

- » Public Hearing and Board Approvals for Preferred Concept Plan

Winter 2017

- » Developing construction documents and bidding

Summer 2017

- » Construction

Funding Overview

SOURCES.....\$512,825

\$420,000 2015 CIP, \$92,825 2017 NPP20

USES.....\$42,000

Survey, Geotechnical, Staff Design and Engineering, Communications

Balance Available for Construction.....\$470,825

2017 NPP20 funds and balance of 2015 CIP funds go towards playground and site improvements in Harrison Neighborhood

Approximately \$270,000 for construction of priority elements, leaving \$200,825 for construction of playground improvements in the Harrison Neighborhood.



Thank you