



Minneapolis
Park & Recreation Board

Bossen Field Park

Public Hearing, Planning Committee
May 20, 2015



Purpose (charge) of the CAC: Be Knowledgeable, Be an Engaged Representative, Develop Master Plan, & Prioritize Plan

Bossen Field Master Plan

CAC Recommended Concept and Phasing

Presentation Outline



- 1) Project Background
- 2) Community Engagement Process
 - a) How did Racial Equity inform the process and plan?
- 3) Concept Plan and Key Features
- 4) Phasing and Estimates

Open Public Hearing



Bossen Field Park ① ② ③ ④ Project background

In a nutshell:

- **Location:** MPRB District 5- Musich, lower South Service Area, Wenonah Neighborhood, Nokomis East Neighborhood Org (NENA), Council Ward 11- Quincy
- **Demographics:**
 - Age (older): 27% under 25 (city 35%), 43 % 25-49 (25-54: 47%), 30% over 50 (18% over 55)
 - Race (white): 75% white (city 60), 10% Hispanic (10%), 8% African (18%)
 - Income (lower, esp. w children): median family (30-49k, 2nd lowest of 5 ranges in city, *but fam. w/ children in lowest income range*)
- **Funding:**
 - 2012 Cap Levy for PG, site
 - 2015 bonds athletic field, site
 - 2016 bonds athletic field, site
 - 2017 bonds and levy athletic field, site
 - Total \$4.25M



Bossen Field Park



Project background

Existing uses:

- **Athletic fields (11)**
 - Adult Softball (9, 2 are lit, most 250' 2 are 300'+, 1 o.f. fence)
 - Youth baseball (330', o.f. fence)
 - Football (not programmed)
- **Community Features**
 - Playgrounds (2, but one nearly fully removed)
 - Wading pool
 - Basketball court
 - Picnic tables
 - Parking total (152, incl. ADA)
 - Restroom/storage bldg. (2 M, 2 W)



Bossen Field Park



Project background

Restroom Building Historic Assessment:

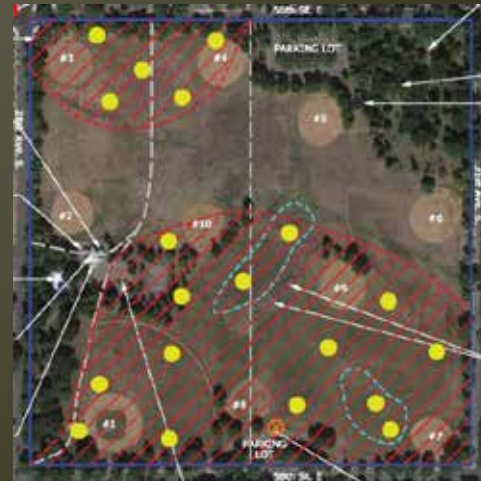
Potentially Eligible for National Register

Phase 2 Environmental Assessment:

Complete, awaiting report



Bosson Shelter and a typical restroom and warming shelter



Preliminary outreach: meetings with racial equity and neighborhood organizers, meetings with NENA staff, CAC chair and with Spanish speaking CAC members

CAC Site Tour: Saturday, February 7 (a sunny day!)

Three CAC meetings (Feb, March, April)

Three PAC Meetings (Citywide Athletics, Operations, Forestry, Maintenance, Customer Service, Recreation, Community Outreach)

Electronic Outreach (website, gov delivery, survey monkey mindmixer)

Outreach to neighbors and nbhd. service providers) **Mail and Paper surveys**

Resident Spanish and Somali speakers-surveys and focus group

Families with school age children (Wenonah/Keewaydin PTA, carnival, Keewaydin middle school students) **Surveys, meetings and activities**

Direct Contact: Overall 220 (updated) face to face contacts, over 2000 mail and electronic contacts)

Bossen Field Park



Community Engagement

CAC Charge (knowledgeable, engage community, master plan, prioritize):

- **Become knowledgeable** about the project and its scope and advise MPRB staff and consultants throughout the planning process.
- **Contribute to broad community engagement** by acting as primary contact for represented communities, and by enhancing the project's interaction with a wide range of stakeholders.
- Make recommendations to the MPRB Commissioners for an **updated Master Plan** for Bossen Field Park which strives to meet both citywide recreation and neighborhood recreation needs, and ensuring sustainable, accessible, safe and welcoming design.
- Make recommendations to the MPRB Commissioners on **prioritization of improvements** to the park so that they can be implemented in phases.

1	<i>Alberto Monserrate</i>	President Wielinski-District 1, Chair
2	Josh Hausmann	Commissioner Erwin-At Large
3	Thelma Hardman	Commissioner Young- At Large
4	Steve Barland	Commissioner Forney- At Large
5	Allan Schaefer	Commissioner Olson- District 2
6	Jane Tigan	Commissioner Vreeland- District 3
7	Mike Shogren	Commissioner Tabb- District 4
8	Dr. Heather Hackman	Commissioner Musich- District 5 1st
9	Ben Kappelman	Commissioner Musich- District 5 2nd
10	Jeanne Massey	Commissioner Bourn- District 6
11	Dennis Stockmo	Minneapolis Schools AD
12	Maribel Osorio	NENA 1st
13	Greg Fedio	NENA 2nd
14	Pat Jackson	Citywide Recreation 1st
15	Gary Gudmundsen	Citywide Recreation 2nd
16	Roberta Hedemark	Citywide Recreation 3rd
17	Paola Buenos	City Council Ward 11 Quincy 1st
18	Tony Ghiliani	City Council Ward 11 Quincy 2nd
19	John Oakgrove	City Council Ward 10 Johnson
20	(vacant)	Mayor of Minneapolis (vacant)



CAC meeting #1

Intro to process, charge and park baseline information

Additional Outreach (generally prior to meeting, though some continued after it): Survey Monkey baseline survey, door to door baseline and NENA surveys (translated in Spanish and Somali), PAC March 5.

Themes on why people used the park include:

Residents used the park for quiet enjoyment.

Non-residents were involved in sports activity.

Common theme: self-directed activity and children's play

All park users shared a common desire for

soccer/flexible field space,

picnic shelter/area

nature/gardens.

Themes on what most needed improvement include:

Residents requested wading pool and picnic area improvements

Non-residents preferences were evenly spread over the rest of the park, including ball fields and parking.

Common theme: Bathroom improvements

Bossen Field Park



Community Engagement

CAC #2: Preliminary 3 Concepts



Lawn Games: Concept A



Gardens: Concept B



Swings: Concept C



Bossen Field Park



Community Engagement

CAC #2: Concepts

Stakeholder Feedback:

PAC, Athletic and others

Concept B was strongly preferred.

Proximity of Pinwheel in South "where it impacted people less."



Latino Neighbors

Concept C was strongly preferred.

Proximity of Open Field Space was a key feature, close to residents, easy to access without crossing the park, visible



Bossen Field Park



Community Engagement

CAC #3: Proposed Design

SYNTHESIS-KEY DESIGN INFORMANTS OVERALL

- Two basketball courts
- Picnic shelters/picnic area
- Extended walkways
- Parking on 58th (not on 31st, not expanded on 30th)
- Open field space (unreserved) proximity to 31st
- No youth soccer on Baseball Field
- Keep existing building

SYNTHESIS-KEY DESIGN INFORMANTS NE CORNER

- Combination of features
- Scaled back Gardens
- Swings (porch swing, hammock)



Bossen Field Park



Community Engagement

How did Racial Equity Inform the project and the concept plan?

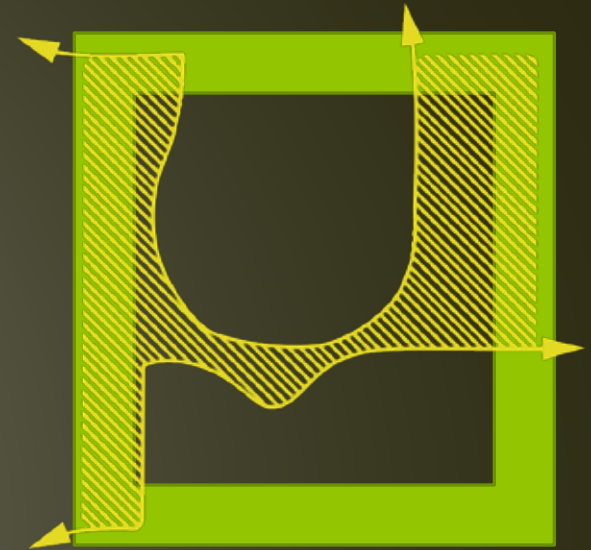
Project scope and charge approved before pilot established. *Balance Community and Citywide athletics* implies equity.

Additional preplanning: Staff training with Julie Nelson and meeting with local groups. Use of Mpls toolkit, developed outreach tools targeted to reach communities of color nearby.

Tools: Door to door and small group meetings outside CAC process. Use of translation and interpreters for flyers, surveys and meetings to minimize language barriers (MPRB, Professional, NENA, and Google).

Process: Use of stakeholder feedback qualitatively; generally park needs and desires overlapped, only at prelim concepts was there a different preference.

Racial Equity training helped identify important decision points, such as when a different concept preference occurred. This decision was considered carefully. Thoughts behind preferences, weighing desires of underserved communities, then finding a solution which would benefit all park users.



Bossen Field Park



Community Engagement

2015 Community Based Design Concept



2007 Concept without Community Input



Design Concept C-1 Flow



What about Soccer Fields?

- Desire of the Latino community we have met with is for the ability to use the park, to have unreserved field space.
- Typical use is informal soccer play, with multi ages, spring through fall.
- At this time, our soccer programs don't match the community desires in many ways (season, formality, language).
- If we put permanent goals in, the space will be a reservable field, Demand in the system is much higher than space available; community use will be lost.

Potential Solutions

- Staff have committed to work with neighbors on a solution for movable goals.
- Staff have committed that these open field spaces will not be entered in Activenet as reserve-able fields.
- Staff are also working on building capacity to serve non-English speakers to assist with registration and other communication needs.
- Staff are working on identifying programs of interest to communities of color.

CAC Design Resolution

The CAC resolution supporting the Concept C1-Flow with slight modifications to the NE corner and open play fields.

- The Bossen Field Master Plan CAC Resolves to accept plan C1 as presented with recommendation that the NE corner is further tweaked, exploring more opportunities with nature and picnicking and to support what the community would like to see in NE corner rather than niche ideas. (unanimous)
- Amendment: Recommendation for a serious exploration on how to accommodate soccer nets for usable space in the open field spaces in the plan for neighborhood use. (unanimous)

CONSTRUCTION FUNDING AVAILABLE BY PHASE

PHASE	ONE	TWO	THREE
AMOUNT	\$729,800	\$2,050,000	\$707,000

CONSTRUCTION FUNDING BUDGET: \$3,486,800

PRELIMINARY CONCEPT COST ESTIMATE

ITEM TYPE	AMOUNT
FIXED ITEMS COSTS	\$3,050,000
FLEXIBLE ITEMS COSTS	\$2,700,000
TOTAL CONSTRUCTION COSTS	\$5,750,000

Funding gap (\$2.2M) may be sourced from grants, donations or future CIP funds or scope reductions.

Bossen Field Park



Phasing and Funding

Concept C-1 phase 1



Major Improvements:

- Playground
- Pair Softball Fields
- Building Upgrade

Fields Available:

1, 2, 3, 4, 5, 6, 10

Fixed item estimate:
\$859,980

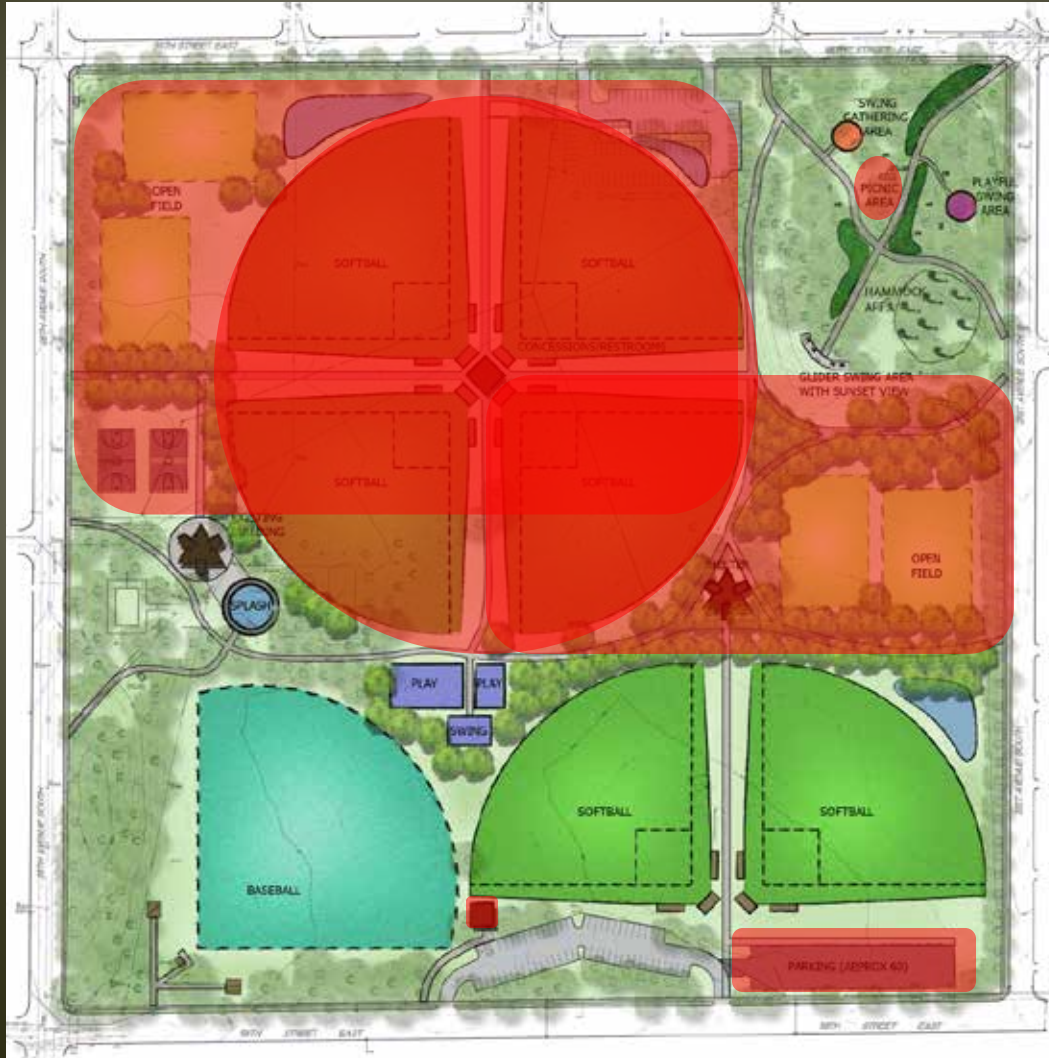
Flexible item estimate:
\$29,700

Bossen Field Park



Phasing and Funding

Concept C-1 phase 2



Major Improvements:

- Quad Softball
- Parking
- Maintenance Bldg
- Open Play
- Picnic Shelter

Fields Available:

1, New Pair Softball
Fields-subject to turf
grown-in

Bossen Field Park



Phasing and Funding

Concept C-1 phase 3



Major Improvements:

- Concessions/Restroom
- Baseball Field
- Splash Pad
- Gardens and Swings

Fields Available:

New Pair, New Quad-
subject to turf grow-in

Fixed item estimate: \$0

Flexible item estimate:

\$2,321,000

CAC Funding Resolution

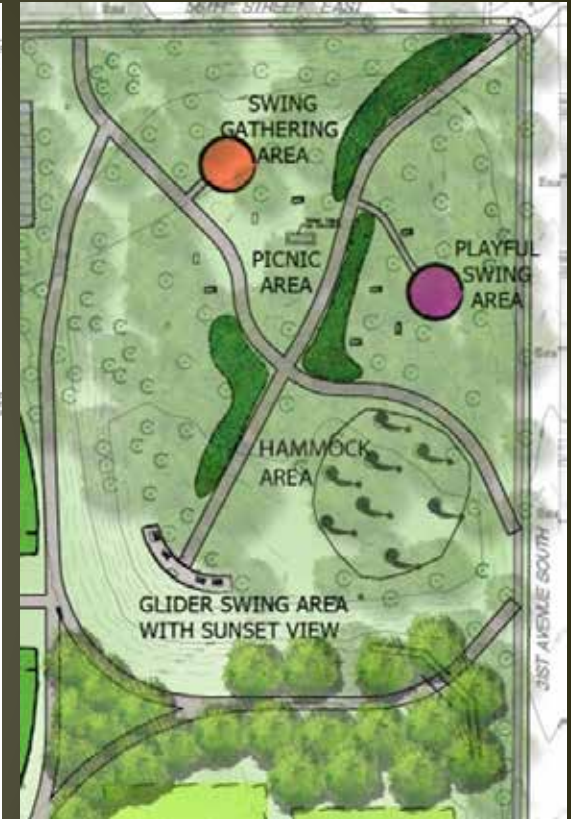
The CAC resolution regarding the funding prioritization for the improvements (unanimous).

- **The Bossen Field Master Plan CAC Resolves to support the phasing plan presented at meeting tonight. (unanimous)**
- **Amendment: To include lighting for the pair of softball fields to the resolution (in the funded phases). (7 in favor, 6 opposed)**

Bossen Field Park



Public Hearing



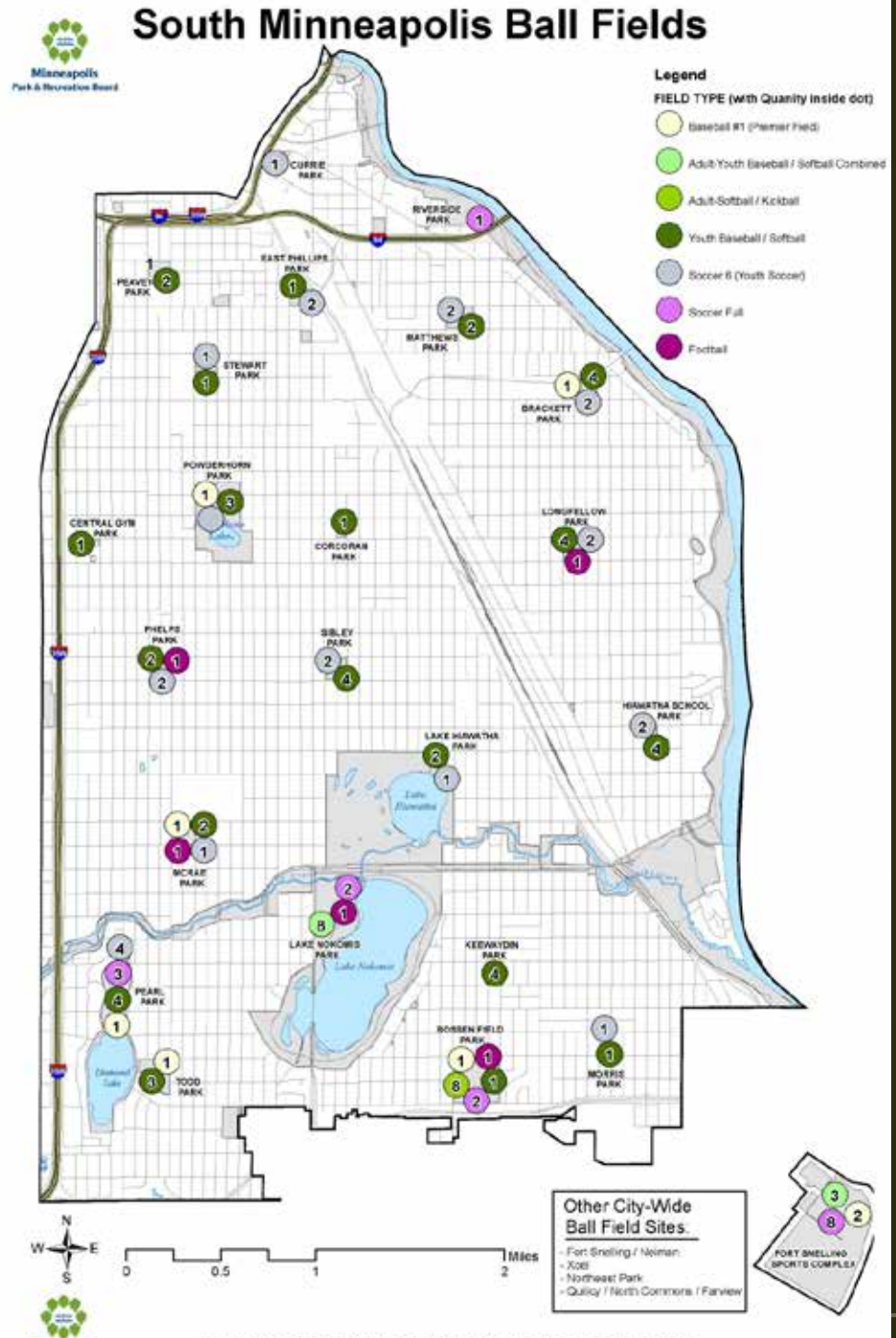
Above: NE Corner
Left: Concept C1-Flow

Bossen Field Park

Public Hearing

Resource information:

South Service Area Fields





PRELIMINARY PHASING: FIXED ITEMS

	2015	2016	2017
FIXED ITEMS	PHASE I	PHASE II	PHASE III
Quad Softball Fields		\$672,000	
Quad Lighting		\$550,000	
Pair Softball Fields	\$256,000		
Maintenance Garage		\$81,920	
Open Play Fields	\$17,067	\$34,133	
Parking-New		\$180,000	
Parking-Rehab		\$100,000	
Trails	\$43,200	\$100,800	
Sidewalks	\$25,200	\$58,800	
Playground	\$233,333	\$116,667	
Exist. Bldg. Renovation	\$120,000		
Basketball Court	\$60,000	\$60,000	
Trees			
Picnic Tables	\$15,000	\$15,000	
Benches	\$12,000	\$12,000	
Subtotal	\$781,800	\$1,981,320	\$0
Contingency	\$78,180	\$198,132	\$0
FIXED ITEMS TOTAL	\$859,980	\$2,179,452	\$0

PRELIMINARY PHASING: FLEXIBLE ITEMS

	2015	2016	2017
FLEXIBLE ITEM	PHASE I	PHASE II	PHASE III
Pair Lighting			\$285,000
Concessions/Restroom Building			\$750,000
Baseball Field Improvements		\$100,000	
Trail lighting	\$27,000	\$63,000	
Entry Feature		\$25,000	
Sunset Viewing Area/Plazas		\$90,000	
Gardens			\$375,000
Large Picnic Shelter			\$200,000
Small Picnic Shelter		\$125,000	
Splash Pad			\$500,000
Sub-Total	\$27,000	\$403,000	\$2,110,000
Contingency	\$2,700	\$40,300	\$211,000
FLEXIBLE ITEMS TOTAL	\$29,700	\$443,300	\$2,321,000

Bossen Field Park

Public Hearing

Resource information: Nokomis/Hiawatha Master Plan Concepts

