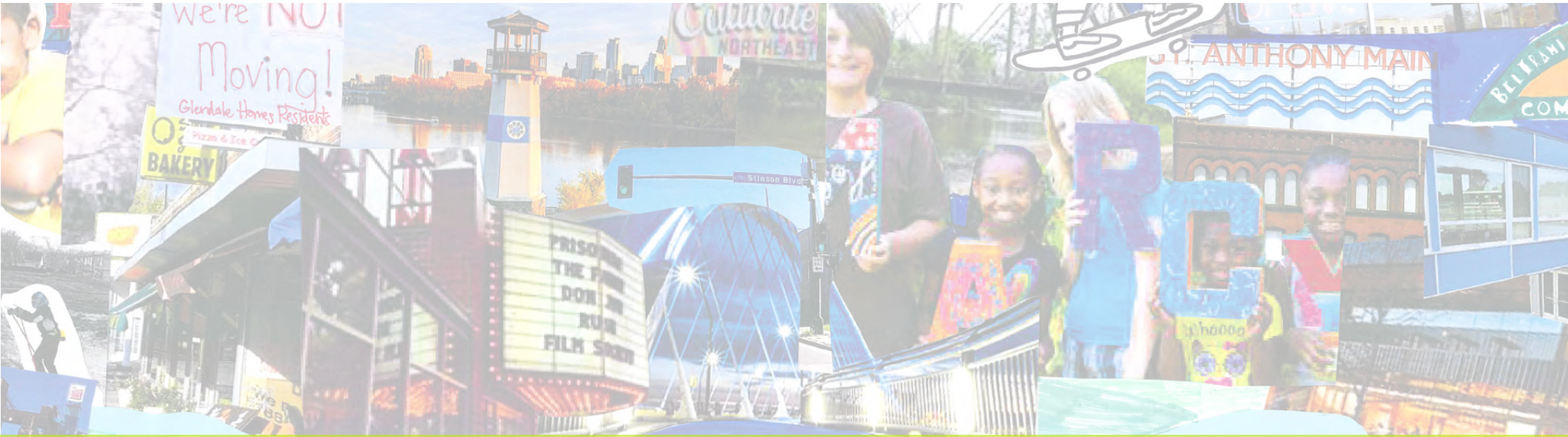


NOTE: This document is an excerpt from the East of the River Park Master Plan – it includes only a single "park packet" and some introductory information. To see the full ERPMP document, visit www.minneapolisparcs.org/eastoftheriver



EAST OF THE RIVER

PARK MASTER PLAN

SPRING 2019

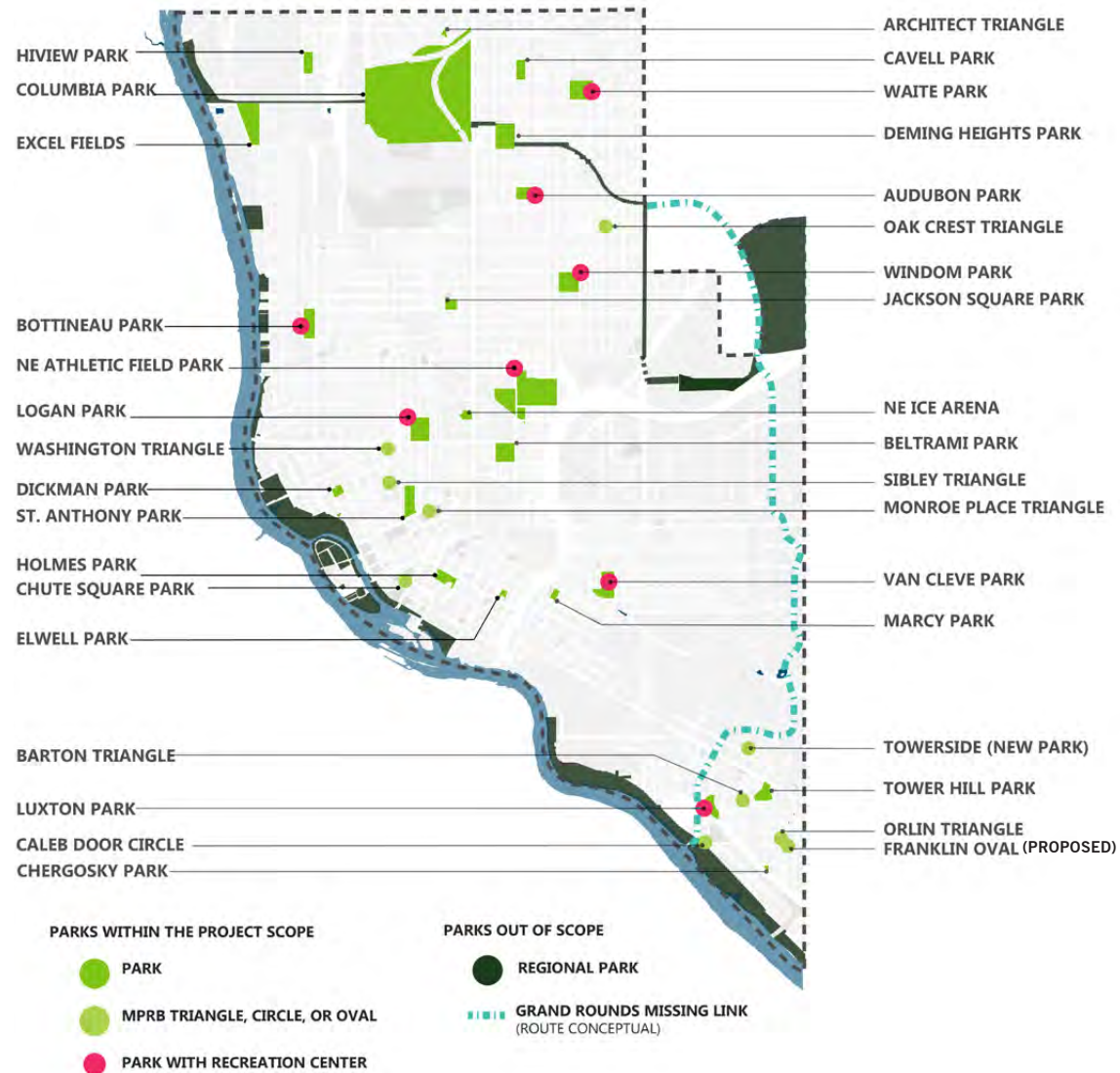


FIGURE 2 | NEIGHBORHOOD PARKS AND TRAILS INCLUDED IN MASTER PLAN



GUIDING PRINCIPLES AND STRATEGIES

The Guiding Principles and Strategies will guide the future of neighborhood parks in NE/SE Minneapolis. The Guiding Principles are the values of the parks in the service area and the Strategies, listed below each principle, are how the plan accomplishes the Guiding Principles.

The Principles are organized in three groups: **VALUES**; **DESIGN AND PLANNING**; and **FACILITIES**. The Principles and Strategies offer guidance and a touchstone for making decisions about parks in the service area.

VALUES

1. SAFETY

Work always toward safe parks for all, including a thriving work environment and a safe space for all types of users and modes of travel.

2. PARTNERSHIP

Explore partnerships for funding, programming, stewardship. MPRB cannot and should not do everything on its own.

3. EQUITY

Work with partner agencies to minimize the possibility of displacement as parks improve. Meet underserved community needs within NE and SE by engaging communities in shaping the park designs and programs. Remove barriers to access to parks, recreation opportunities, and programming.

4. SUSTAINABILITY

Meet current park and recreation needs without sacrificing the ability of future generations to meet their own needs by balancing environmental, economic and equity concerns.

5. ACCESSIBILITY

Balance the park amenities across the service area and the City as a whole. Ensure that all park users have equal access to a variety of recreation and park programs, facilities, and opportunities. Ensure that parks are accessible to all abilities and interests.

6. RESPONSIVENESS

Anticipate and thoughtfully respond to the diverse needs of the city's communities, continually seeking to improve park and recreation services. Emphasis will be placed on researching community needs and demographics when considering program and facility delivery. Ongoing, robust and equitable community engagement is an ongoing need in park design, maintenance and programming.

7. WELLNESS

Establish parks and park features that provide opportunities to improve physical, emotional, and spiritual wellbeing. Also work to improve any past pollution of air, soils and water in NE and SE Minneapolis.

PLANNING AND DESIGN

8. MULTIGENERATIONAL

Consider all age ranges in the design and development of parks, with particular focus on:

- Youth voice in design, planning, and programming decisions.
- More activities and spaces for teens / young adults.
- Design for seniors by prioritizing accessibility, offering active, low-impact activities, as well as passive activities, especially in neighborhoods with high populations of seniors and near elder care facilities.
- Focus on expanded playground facilities, including playgrounds and nature play facilities in neighborhoods with large concentrations of youth.
- Develop universally accessible playgrounds, or playgrounds that are accessible to children of all abilities, in the service area.
- In neighborhoods adjacent to a university or with high concentrations of young adults, design parks for young adult uses.



Source: The Silver Blog. <https://www.silvergroup.asia/2012/03/21/age-friendly-parks-multiply-across-australia/>



TOP | Millennium Park. Source: City of Chicago. <https://www.choosechicago.com/things-to-do/parks-and-outdoors/millennium-park/outdoor-fitness-at-the-park/>

BOTTOM | Kids biking. Source: <http://www.balancebikeblog.com/balance-bike/>

9. WELCOMING

Design park spaces and new parks to be welcoming for all. Ensure that park designs, including facilities and overall character, invite people in, are culturally inclusive and appropriate, and meet community needs for access.

- a. Provide facilities for diverse cultural groups in NE and SE, including but not limited to East African and Latino populations.
- b. Provide signage and wayfinding throughout that is culturally inclusive, pictorial or graphic, and ADA accessible.
- c. Ensure consistent access to park amenities including restrooms and water, when available.
- d. Improve lighting on courts and pathways throughout the service area.

10. IMPLEMENTABLE

Plan for the implementation of significant park enhancements with the programmatic, financial, and leadership support of community and agency partners, recognizing MPRB cannot act alone in these projects.

- a. Develop Park Stewardship Agreements for plantings and park areas that are tended by community members.
- b. Align park improvements with timing, funding, planning and design processes of partner agencies including the City of Minneapolis and Minneapolis Public Schools, and other key agency and/or organizational partners.
- c. Design spaces to be flexible so they can accommodate a wide variety of uses.



Source: The Helix. <http://www.thehelix.co.uk/>



TOP | National Park Sign. Source: Pinterest.

BOTTOM | Green Rounds Sign Source: Streets MN <https://streets.mn/2015/10/19/grand-rounds-branding-design/>

11. INTEGRATE ARTS AND CULTURE

Create more opportunities for arts, music, and performance that reflect the community — both programmed and spontaneous:

- Include performances spaces in parks throughout the service area.
- Incorporate visual art (sculpture, painting, mosaic, etc.) wherever possible.
- Provide platforms for local artists to share their work.
- Integrate art into infrastructure including railings, wayfinding, rec centers, benches, plazas and more in the parks.
- Amplify the NE Arts District through integrating arts into the infrastructure and programming at parks in the surrounding neighborhoods.



TOP | Nicollet Mall. Source: On Nicollet <http://www.onnicollet.com/design>

BOTTOM | Basketball Court Source: designboom <https://www.designboom.com/art/gue-basketball-court-painting-alessandria-italy-01-27-2017/>

TOP | In Flux. Source: James Brenner <http://www.jamesbrenner.com/in-flux-edison-high-school-minneapolis-mn/>

BOTTOM | J. Mayer H. Times Square. Source: Arch Daily. <https://www.archdaily.com/794882/j-mayer-h-fills-times-square-with-x-shaped-lounge-chairs>



Atlanta Beltline. Source: Perkins + Will

12. NEW PARKS

Seek additional parkland or private land available for public use in key locations:

- a. Establish a clear strategy for completion of the Grand Rounds Missing Link through the designated Regional Trail Search Corridor.
- b. Secure a new park in the Towerside Innovation District.
- c. Resolve ownership and management of triangles across the service area.
- d. Explore other opportunities to increase the size of current neighborhood parks.
- e. Designate a search area for pocket parks, micro parks, and neighborhood parks to provide additional parks or amenities for the NE/SE Mid-City Industrial neighborhood, SE Como, and surrounding area.



Buffalo Bayou Park, Houston. Source: SWA. <https://www.swagroup.com/projects/buffalo-bayou-park/>

13. IMPROVED CONNECTIONS

Recognize the importance of connections to and between parks:

- a. Work with partners to implement safe street crossings at all parks, and especially along arterials like Broadway and Central.
- b. Complete sidewalk gaps in or adjacent to parks.
- c. Work with the City of Minneapolis to complete and enhance the street network as a connecting web between parks, including consideration of green streets, complete streets, trails and greenways, green alleys, and bicycle infrastructure
- d. Install wayfinding systems in each park and to recreation centers as well as system maps at neighborhood parks, to direct users to nearby amenities.
- e. Connect to the Mississippi River, Regional Parks, and the RiverFirst vision.
- f. Work with partners to improve transit connections to and between parks and improve bus or LRT stop amenities at or adjacent to parks.
- g. Connect parks and support the vision of the Great Northern Greenway.
- h. Integrate park planning efforts into regional trail planning efforts, like the Granary Corridor, led by partner agencies.
- i. Enhance ecological corridor connections, especially along the parkways and river.
- j. Implement the Grand Rounds Missing Link, or Bridal Veil Regional Trail, as a key trail destination.
- k. Install wayfinding and interpretive markers at each park along the Grand Rounds in the Service Area.

14. COMMUNICATE AND ENGAGE

Clearly communicate around park access, programs and decision making to diverse users.

- a. Provide clear communications regarding access to restrooms and other park amenities.
- b. Provide improved wayfinding for all parks in NE and SE Minneapolis
- c. Provide multiple points of information sharing to the community about park programming and projects.
- d. Provide multiple points of engagement for community to provide input on park programming.
- e. Take diverse language groups of park users into account.
- f. Engage community in decisions about parks whenever possible.

15. FOSTER GATHERING

Create more opportunities for gathering in small groups of friends and family, as well as extended families and in large community groups.

- a. Include flexible gathering plazas and courtyards in park designs.
- b. Balance the ability for groups to reserve spaces and drop-in users of the parks.
- c. Make larger park gathering spaces available to all user groups.
- d. Develop both more intimate and larger performance spaces. Support the existing neighborhood and park events.



Concert at the Commons, Minneapolis. Source: Damon Farber <http://damonfarber.com/projects/featured/the-commons/>



TOP | Summer Fest. Source: Southwest Journal. <http://www.southwestjournal.com/focus/get-out-guide/2016/06/minneapolis-heats-up-with-summer-fests/>

BOTTOM | Burnside Park, Providence. Source: Project for Public Spaces, <https://pps-placemaking.exposure.co/burnside-park-providence>



Mature Tree Canopy. Source: MPRB

16. ENVIRONMENTAL STEWARDSHIP

Improve park environments, enhance ecological function, and reduce environmental impact through:

- a. Inclusion of natural areas in most parks to both reduce acreage of mown turf and to increase habitat and pollinator friendly spaces.
- b. Develop effective management strategies for natural areas including stormwater BMPs, pollinator gardens and native landscapes.
- c. Explore sustainable construction techniques and materials, even if initial cost may be higher, to improve environmental performance.
- d. Explore alternative energy production, such as solar electric or heating, geothermal heating/cooling, or district energy systems.
- e. Seek out opportunities for stormwater capture and management in partnership with the watershed district, including working to tie into district stormwater systems when possible.
- f. Increase the tree canopy and diversity in NE and SE parks and street network by protecting the existing canopy and planting new trees to reduce the gaps in tree canopy.
- g. Look for opportunities to improve the air and water quality of the parks near industry or freeways and highways.
- h. Create stormwater BMPs at parks that have been identified as effective stormwater treatment locations in the 1NE Watershed in collaboration with the City and watershed district, such as Columbia Park and Golf Course.



Stormwater Infiltration. Source: Perkins + Will.

- i. Plan in concert with other green spaces in the area including but not limited to railroads, City of Minneapolis owned land and right of way, the University of Minnesota open spaces, and other neighboring cities' property.
- j. Knit parklands and green space together and maximize larger patches of natural areas through the service area to enhance ecological function and connect to the Mississippi River and flyway.
- k. Encourage Park Stewardship Agreements to maintain and improve ecologically healthy spaces.

17. SUSTAINABLE MATERIALS

Ensure materials used in park construction are strong, durable, environmentally responsible, easy to maintain, and safe, especially when used by children and seniors.

18. FEASIBILITY

Manage and resolve land use, land ownership, lease agreements, and other site control issues, if applicable, prior to implementation of capital improvements.

- a. Address feasibility in the plan to implement the Grand Rounds Missing Link and other proposed park spaces.
- b. Develop park spaces that can be managed sustainably, effectively, and efficiently.

19. SCHOOL SUPPORT

- a. Wherever parkland is adjacent to a Minneapolis Public School, make efforts to align with that school on the utilization of shared land.
- b. Align implementation efforts with the Safe Routes to School planning by the City and public schools.
- c. Maintain clear public access to all park amenities adjacent to schools.

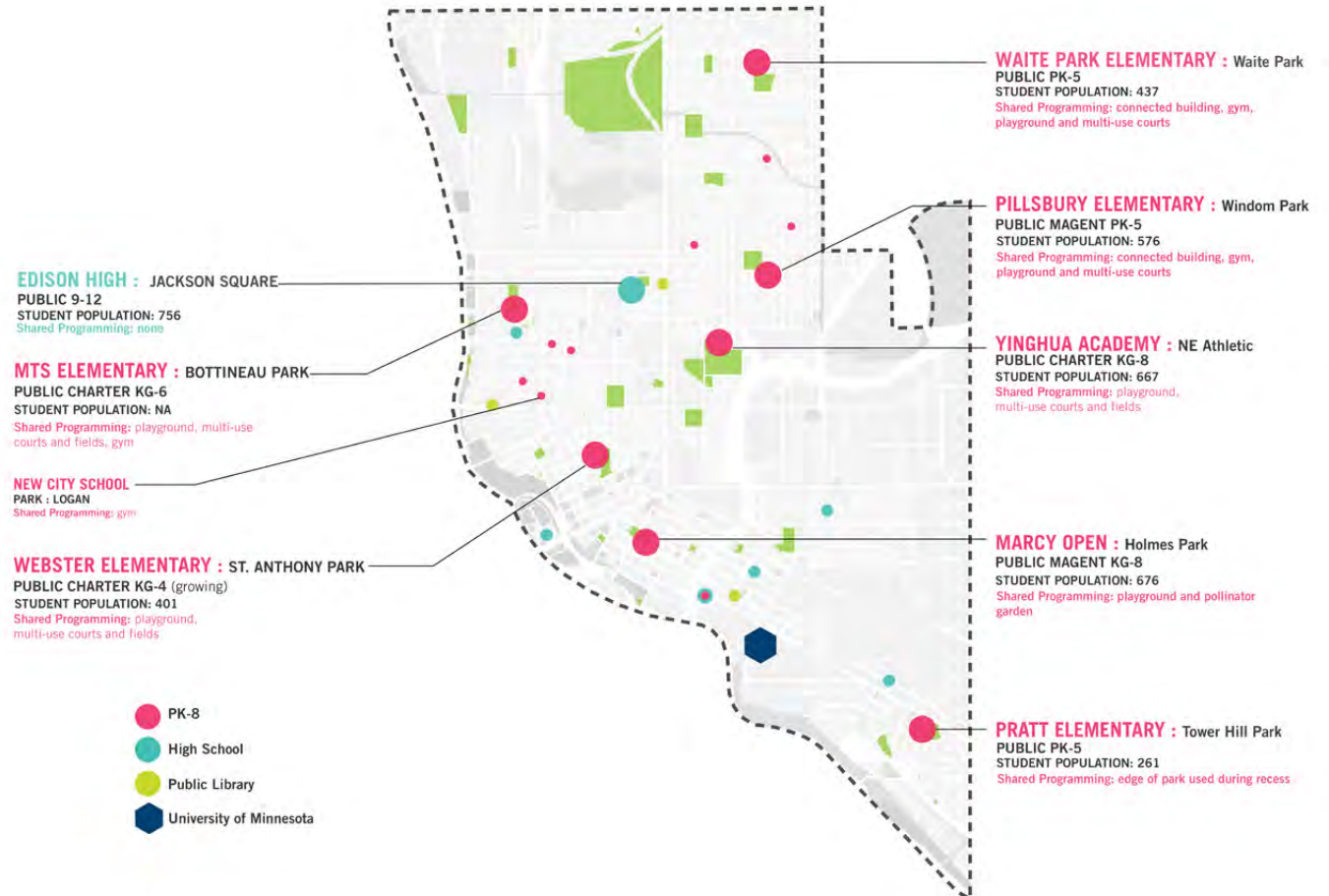


FIGURE 13 | SCHOOLS ADJACENT TO PARKS

20. URBAN AGRICULTURE ZONES

Consider parks as a vehicle for equitable food access in Minneapolis.

- Expand and manage fruit tree planting throughout service area.
- Designate community garden sites and other urban agriculture opportunities, as an aspect of implementation of the MPRB - adopted Urban Agriculture Plan.
- Prioritize local small businesses and vendors.
- Beware of conflicting park uses with the introduction of Urban Agriculture Zones.
- Work in partnership with neighborhood groups or other organizations on urban agriculture efforts, including not creating new community gardens in parks when there are existing community gardens located nearby.

21. GROW AQUATICS

- Transition from a wading pool dominated system to a mix of wading pools, splash pads, and hybrid facilities in order to provide facilities for a broader range of youth.
- Continue to seek out partnership opportunities to create a deep water pool in the service area.
- Work with partners to improve public access to non-MPRB aquatic facilities and provide additional programming for swimming education opportunities.
- Improve NE Water Park by building new bathrooms, storage, and staff facilities.



TOP LEFT | Community Garden. Source: MPRB.

TOP RIGHT | Lafayette Greens, Detroit. Source: Kenneth Weikal Landscape Architecture. ASLA. <https://www.asla.org/2012awards/073.html>

BOTTOM | Washington Canal Park, Washington, DC. Source: Robitaille Curtis. <http://www.robitaillecurtis.com/park/crthad7nh2cd13091ee3wo4h80hcqp>

22. DIVERSIFY ATHLETIC FIELDS

- Improve overall quality of multiuse fields and diamonds, through soil conditioning, irrigation, and other methods.
- Balance the amount of ball diamonds across the system with other athletic fields and space needs, by decreasing the number of ball diamonds.
- Ensure that safe, non - toxic materials are used in the construction of fields in the parks. Distinguish between pesticides and herbicides.
- Expand and enhance indoor fields and rinks within the service area.
- Create an artificial turf multiuse field in the service area.
- Maintain or introduce a track in the Service Area.



23. EXPAND COURTS

- Continue and expand commitment to basketball, especially full - court, throughout the service area. Create half courts adjacent to full courts or smaller courts for younger players.
- Implement new or retrofit existing courts to include new types of use on multiuse courts such as pickleball or bike polo.
- Focus tennis investment in targeted areas with larger banks of courts for improved maintenance and expanded league play opportunities.



TOP | Soccer play in Minneapolis park. Source: MPRB
 BOTTOM | Bike Polo in Minneapolis park. Source: MPRB

24. INNOVATE PLAY AND OTHER FACILITIES

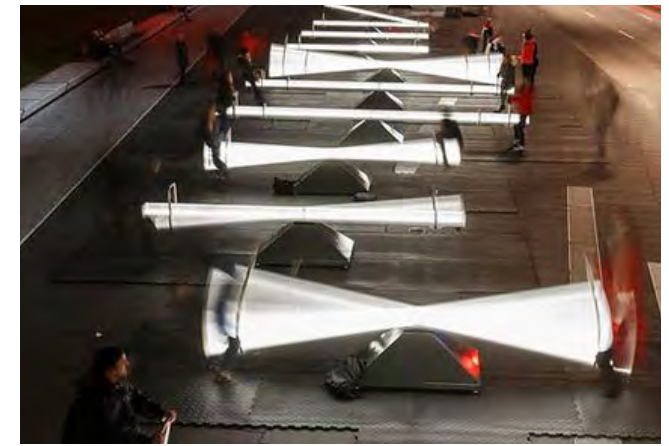
- a. Increase diversity of play opportunities to include adventure and nature play.
- b. Implement skate/BMX parks within the service area, following the guidance of the adopted Skate Park Activity Plan.
- c. Provide a walking loop with seating in most parks.
- d. Increase number of dog parks, and work to provide small and large dog parks, in the service area while addressing the challenge that some cultural groups do not want to recreate or be near dogs in parks.
- e. Work in partnership to develop a venue for Roller Derby.
- f. Create a universally accessible playground in the service area.
- g. Create flexible facilities that can accommodate sports like cricket, bike polo, lacrosse, and ecuavolley.



25. ENCOURAGE PARK USE YEAR-ROUND

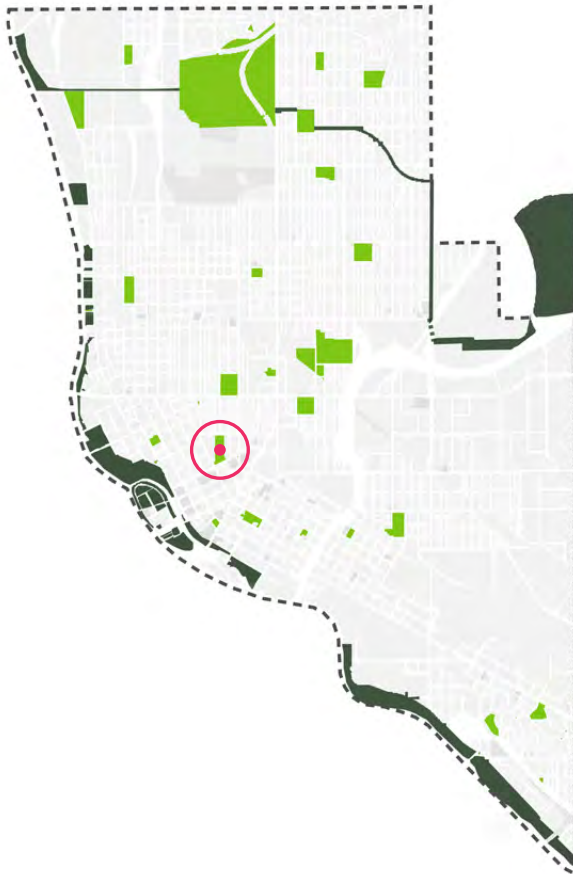
Increase opportunities for year-round activity.

- a. Expand indoor sports venues.
- b. Support opportunities for skating and sledding.
- c. Implement one refrigerated hockey rink in the service area.
- d. Develop a sports dome and/or artificial turf in the Service Area.
- e. Build new or expanded gyms at Waite and Bottineau attached to the recreation centers.



TOP | Swings at Pulse Park, Denmark. Source: Cebra Architecture. <https://cebraarchitecture.dk/project/the-pulse-park/>
 BOTTOM LEFT | Skating Ribbon at Maggie Daley Park, Chicago. Source: Maggie Daley Park. <https://maggiedaley.com/things-to-do-see/skating-ribbon/skating/>
 BOTTOM RIGHT | Impulse. Place Des Festivals, Montreal. Source: Colossal. <https://www.thisiscolossal.com/2015/12/impulse-light-seesaws-montreal/>

SAINT ANTHONY PARK



LOCATION AND HISTORY

Located in the St. Anthony East neighborhood, this park was acquired in 1973 from the Minneapolis housing authority. The park was named for the former town on the east bank of the Mississippi River, which took its name from St. Anthony Falls. The land for a playground and a new school, Webster School, had been set aside as part of a housing redevelopment project in 1964. The site was developed primarily as a playground, for use by the school and the neighborhood in 1974. The only structure at the park is a restroom building, which was constructed when the park was developed. Work in the park was completed with seeding and sodding in 1977. The most unusual feature of the park, in a flat section of the city, is an artificial sledding hill built on the south end of the park.

EXISTING CONDITIONS AND CHARACTER

This important neighborhood open space includes multiuse sport fields and one diamond, along with a playground. It is adjacent to Webster Elementary School, which uses the fields and playground daily for recess and gym classes. There are new tree plantings throughout park but these are concentrated in the SE area of the park. The main focal point of the park is a constructed hill, informally called May Mountain, which is used for sledding in the winter. It is home to native plantings on the slope during the summer. Named for area resident Jeanette May, the hill provides great skyline views all year. The multiuse fields are popular spots for a local Latino soccer league and for pick-up cricket practice and games. Since the park is tucked behind Webster school and the hill on two sides, sight lines into the park are limited, and improved access to

the park should be a priority. Parking is on adjoining neighborhood streets, but the school parking lot is used after hours by park users.

THE PROPOSED DESIGN

This design highlights the park's existing ecological features, open green space, and play spaces. It expands areas for community gathering. Along the base of the hill near the school, a pollinator education garden or outdoor learning lab will be a great addition to the park and school alike. It should be situated in a way that it does not conflict with wintertime sledding. An improved path network into the park and wayfinding by the school will benefit park users and make the park more welcoming for the general public. A splashpad element is added to the improved play area to bring water play to the park. The soccer community, especially the Latino leagues, have expressed an interest in having children's spaces, like water play, adjacent to multiuse fields so that families can be together in the park during games and practice. Along with a smaller multiuse field and an adult sized field, there is a cricket pitch located in the field to accommodate the small scale pick-up cricket games that take place in the park. While there are a number of formal and full sized cricket facilities in Minneapolis, this facility is only for practice due to space limitations.

CONNECTIONS BETWEEN PARKS

There are several nearby triangles in the neighborhood that encourage safe connections to and from the park on all neighborhood streets.

KNOWN LAND USE AND COORDINATION ISSUES

Ongoing coordination with MPS and Webster School prior to implementation of the plan, especially in areas directly adjacent to the school.



- TENNIS COURT
- PLAYGROUND
- RESTROOM
- PICNIC AREA
- NATURAL AREA: PRAIRIE
- MULTIUSE FIELD
- MULTIUSE DIAMOND
- BASKETBALL COURT

SAINT ANTHONY PARK
EXISTING CONDITIONS

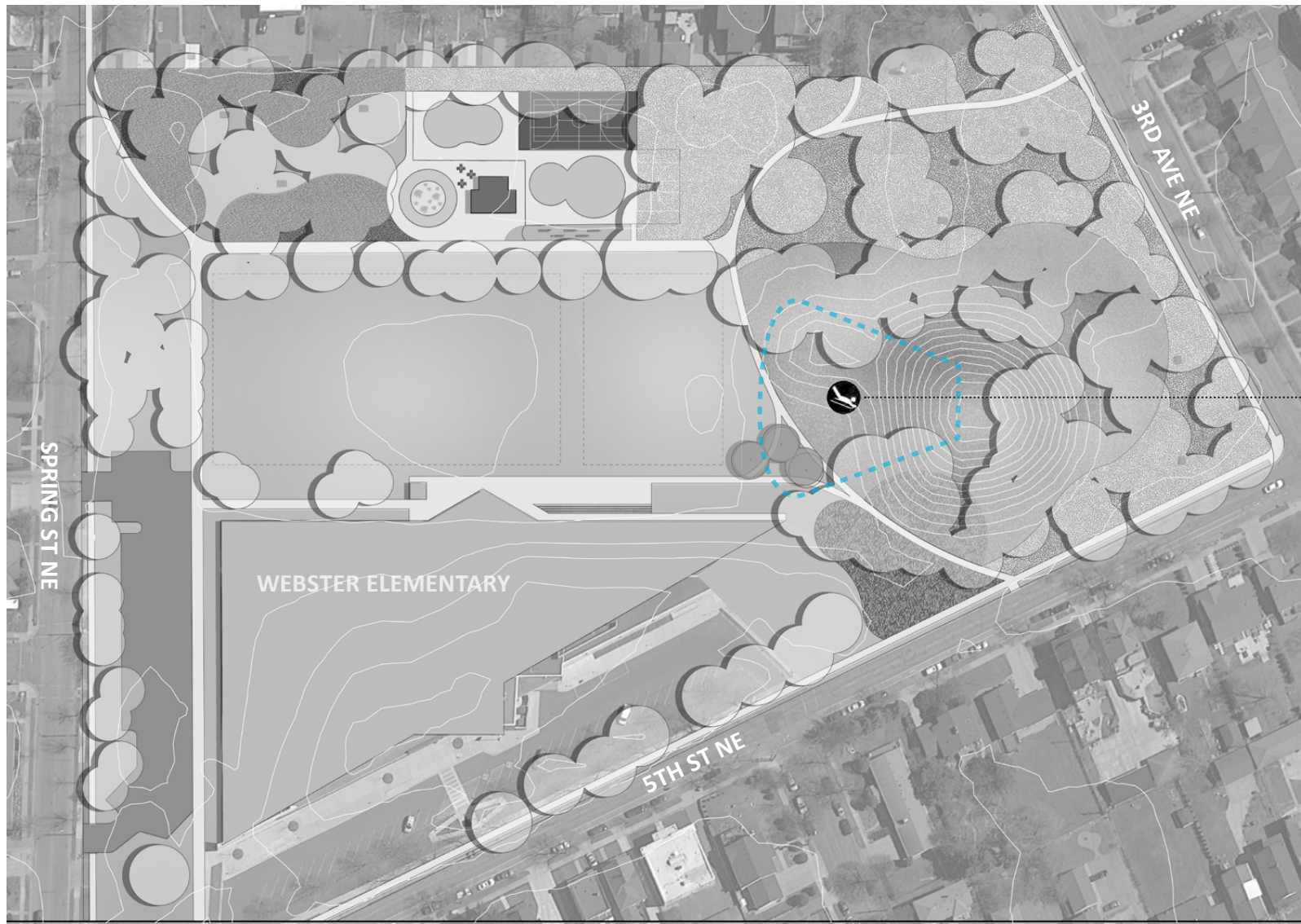




- PICNIC AREA
- NATURAL AREA: WOODLAND
- MULTI SPORT COURT
- IMPROVED WALKING TRAIL
- HALF COURT BASKETBALL
- PLAYGROUND
- RESTROOM
- NEW SPLASH PAD
- NATURAL AREA: BEE LAWN
- POLLINATOR EDUCATION GARDEN
- SOCIAL SEATING
- NATURAL AREA: PRAIRIE
- NATURAL AREA: STORMWATER FEATURE

SAINT ANTHONY PARK





DESIGNATED SLEDDING HILL

SAINT ANTHONY PARK



ST. ANTHONY DESIGN MATRIX				
	General Input August 2017-May 2018	Design Responses (May 2018)	Initial Concepts Input (July-August 2018)	Preferred Concept (September 2018)
Ecology	Natural areas are a highly loved feature of the park.	Expanded natural area footprint. Included an ecological learning area.	Support to maintain the hill and natural area.	Preferred concept includes hillside prairie, bee lawn, and woodland plantings. Pollinator education area also included.
Play	Request for sensory play areas. Existing playground is highly used.	Developed informal play spaces and flexible greenspace in addition to maintaining the existing play area.	No comments.	Preferred concept includes informal play areas and existing playground.
Wayfinding and Circulation	Improve visibility from the street and entrances.	Proposed entrances and formal pathways throughout the park.	No comments.	Preferred concept includes new entrances and pathways.
Gathering	No comments.	Proposed new gathering space around the play areas.	Request for additional picnic areas.	Preferred concept includes plaza area and increased picnic areas.
Aquatic	Request for a water feature.	Proposed a splash pad	Support for splash pad.	Preferred concept includes a splash pad near formal and informal playspace.
Fields	No comments.	Proposes one large field that can be easily divided.	Request for one small multiuse field and one large field.	Preferred concept includes maintains large multiuse field that can be easily divided for different sport divisions.
Courts	Tennis court is highly used	One plan proposes expanding tennis and relocating basketball.	Desire to keep tennis courts but service area far exceeds tennis court needs.	Preferred design proposes multisport court with an additional half-court basketball.
Diamonds	Request to remove the diamond.	Removed diamond.	No comments.	Preferred concept does not include the diamond.
Winter	Request to maintain sledding hill.	Maintained sledding area	No comments.	Preferred concept maintains sledding area.
Other	Interest in dog park	Proposed dog park.	Mixed responses on the dog park.	Dog park removed from preferred concept because of the number being added to the whole service area.

PROPOSED AMENITY COST ESTIMATE

Asset Type	Project	2019 ESTIMATED COST/PROJECT
Aquatics	Splash pad	\$ 854,268
Play	Traditional Play Structures in existing container	\$ 806,809
Athletics	Athletic Field renovation, bowl: Multi-use field space	\$ 631,209
Courts	Multisport Court, 1/2 Court basketball	\$ 232,551
Landscape	Naturalized areas	\$ 175,600
Other	Building Renovation for pumphouse	\$ 522,053
Other	Learning Garden	\$ 47,459
Other	Terraced Seating	\$ 37,967
Other	Renovate walking paths	\$ 379,675
Other	Miscl. signs, trees, furniture	\$ 85,901
TOTAL		\$ 4,380,973

PROPOSED OPERATIONS ESTIMATE

Amenity	Total Per Unit Operations Cost	Δ Qty	Δ Cost
Mult-use-Diamond	\$ 20,000.00	-1	\$ (20,000.00)
Full Court Basketball	\$ 1,500.00	-1	\$ (1,500.00)
Splash Pad	\$ 35,000.00	1	\$ 35,000.00
Tennis	\$ 1,500.00	-1	\$ (1,500.00)
Multisport court	\$ 1,500.00	1	\$ 1,500.00
Difference			\$ 13,500.00