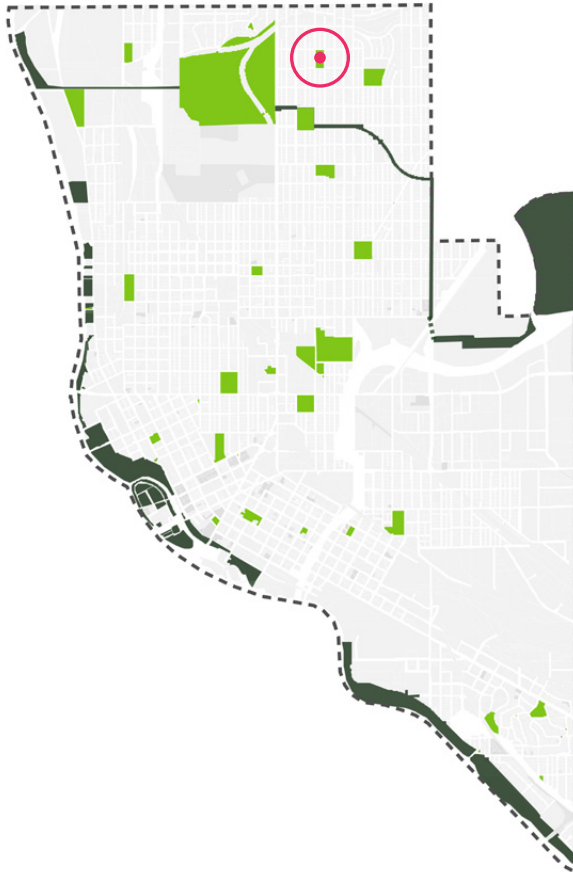


CAVELL PARK



LOCATION AND HISTORY

Cavell is a small neighborhood park in the Waite neighborhood of Minneapolis. The park was named for Edith Cavell School that had previously occupied the site. Edith Cavell was an English nurse working in Belgium at the outbreak of World War I. When the German army occupied Belgium, she helped Allied soldiers escape to the Netherlands. She was executed by Germany in 1915 because of these efforts and became a propaganda symbol in England, the United States, and other Allied countries to generate support for the war against Germany.

The Cavell School site was targeted for joint development by the school board and Park Board in 1948 following a joint resolution of cooperation between the two boards to provide park facilities in under-served sections of the city. However, instead of developing the Cavell site, the two boards opted to work together to build a new school and park, Waite Park, four blocks east.

With the Waite Park development, the Cavell site received no further consideration from the Park Board until the Northeast Lions Club requested the Park Board's cooperation in developing a "cub" baseball field on the site. The Park Board approved expenditures for the improvement and operation of that field and authorized the superintendent to work with the school board to obtain their approval.

The Park Board finally acquired the site from the school board in 1968, using funds from the federal government's Open Space Act and the Minnesota Conservation Department. The site was redeveloped

as a park, with ball fields, playground equipment and a recreation shelter in 1977. New courts and paths were installed at Cavell Park in 1999.

EXISTING CONDITIONS AND CHARACTER

Cavell is another park in NE Minneapolis with impressive topography with recreational amenities. With challenging sight lines into the park from the street, nearby residents have expressed a concern with gathering areas that are hidden in the park. There is a small seating and picnic area near the playground. Cavell is part of the 1NE Watershed project, under which MPRB, MWMO, and other project partners are seeking solutions to regional stormwater management. MWMO and the City are considering tree trenches along the northern end of the park.

THE PROPOSED DESIGN

The design for Cavell Park design proposes an adventure play area nestled into the existing topography. The adventure play area will provide a multi-generational play area with both traditional play climbing structures and swings, as well as other more dynamic, natural, or creative spaces. Such spaces will foster a sense of exploration and discovery for older children and adults, in addition to providing diverse play opportunities for younger children. A splash pad is integrated into the adventure play area to maximize the site use when the splash pad is not in season and to allow open play between the splash pad and other play features.

The underused diamond is removed and an additional multiuse field is added to accommodate increased flexibility in use including sports, relaxation, and gathering. Group gathering spaces are expanded

with the addition of a small plaza space and picnic pavilion that could be reservable. As features in the park expand, stormwater features will be integrated to capture all runoff from the park and support the surrounding neighborhood when feasible.

The popular tennis and basketball courts remain. Due to the limited size of the park, and the high number of tennis and multiuse courts in the area, a single tennis court will be retained here, in contrast to MPRB's efforts to otherwise bank courts across the service area. The removal of the court from Cavell should be re-considered as courts are balanced across the service area. The hill that is currently used for sledding that is proposed for adventure play could be designed to accommodate a more moderate sledding hill. Along the steep northern edge of the park is a native prairie/savannah. This area is too steep for most recreational activities and access and is a valuable opportunity to integrate habitat into the park.

CONNECTIONS BETWEEN PARKS

Improved bike and pedestrian connections to nearby Columbia Park and Waite Park are important considerations to the park system.

KNOWN LAND USE AND COORDINATION ISSUES

There are no known land coordination issues at Cavell Park.



MULTIUSE DIAMONDS

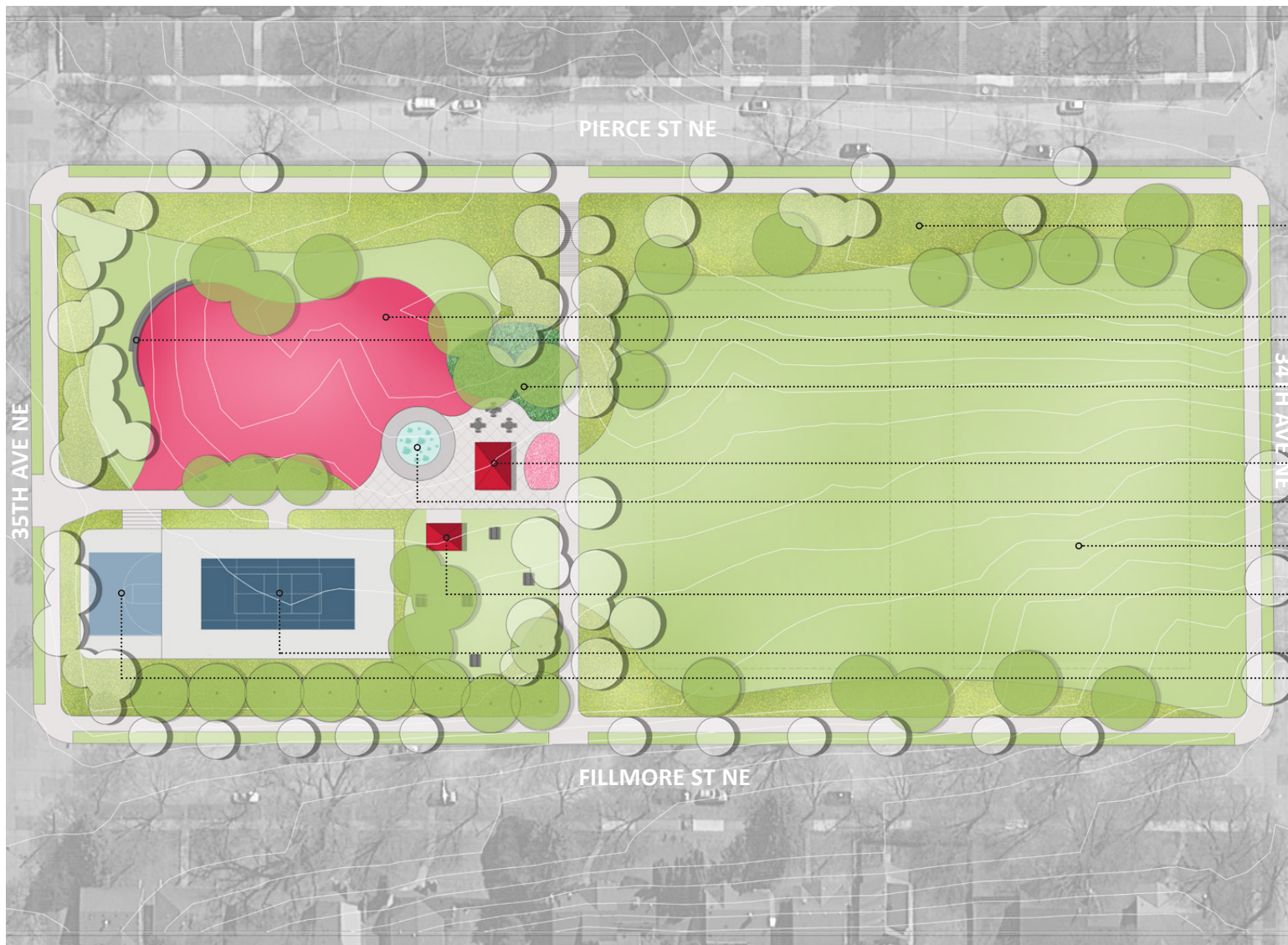
PLAYGROUND

TENNIS

BASKETBALL

CAVELL PARK
EXISTING CONDITIONS





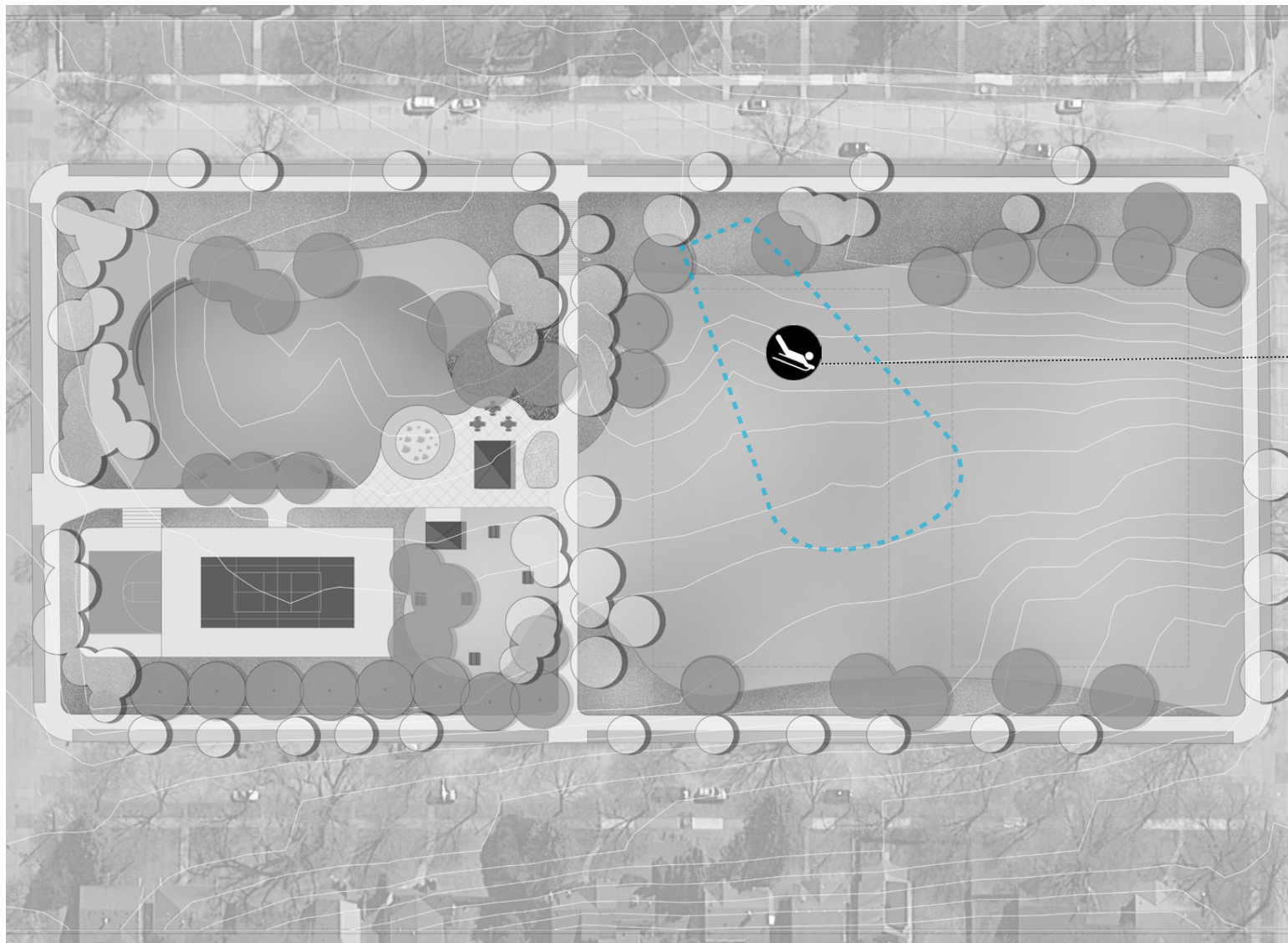
- NATURAL AREA : PRAIRIE
- ADVENTURE MULTIGENERATIONAL PLAY
- SOCIAL SEATING
- NATURAL AREA : STORM WATER FEATURE
- PUMPHOUSE/ CHANGING ROOM
- SPLASH PAD
- EXPANDED MULTIUSE FIELDS
- PICNIC PAVILION
- TENNIS
- BASKETBALL

CAVELL PARK

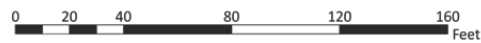


WINTER PROGRAMS

SLEDDING HILL



CAVELL PARK



CAVELL DESIGN MATRIX

	General Input (August 2017-May 2018)	Design Responses (May 2018)	Initial Concepts Input (July-August 2018)	Preferred Concept (September 2018)
Ecology	Request for increase habitat areas.	Proposed adding natural plantings around the park.	Support for the addition of prairie plantings. Suggestion for stormwater catchment.	Natural areas including a stormwater feature, prairie plantings, and bee lawn included in preferred concept.
Play	Request for an updated playground.	Proposed adventure play area and skate park.	Strong support for adventure park. Opposition to the skate park.	Preferred concept include adventure play area.
Wayfinding and Circulation	Request for improved crossings and park entrances.	Proposed improve entrances to park.	No comments.	Preferred concept includes new entrances and improved crossings.
Gathering	Request for improved picnic area.	Proposed picnic area and plaza areas.	No comments.	Preferred concept includes picnic pavilion and plaza space.
Aquatic	Request for water base amenity.	Proposed adding wading pool or splash pad.	Strong support for splash pad.	Preferred concept includes splash pad near adventure play area.
Fields	Multiuse field is currently used regularly.	Expanded multiuse fields.	Support for multiuse fields.	Expanded multiuse fields.
Courts	Tennis is highly used.	Tennis	Support to maintain tennis.	Existing courts are maintained.
Diamonds	Diamonds are not used.	Proposed removing diamonds and replacing with multiuse field.	No comments.	Preferred concept does not include diamonds.
Winter	No comments.	No comments.	No comments.	No comments.
Other				

PROPOSED AMENITY COST ESTIMATE

Asset Type	Project	2019 ESTIMATED COST/PROJECT
Aquatics	Splash Pad	\$ 854,268
Other	New Changing Room and pumphouse	\$ 266,722
Play	Adventure Park	\$ 1,233,943
Athletics	Athletic Field renovation: Multi-use field space	\$ 557,647
Courts	Tennis Court	\$ 123,394
Courts	Basketball Court (.5)	\$ 61,697
Landscape	Naturalized areas	\$ 39,315
Other	Group picnic shelters: new shelter	\$ 104,411
Other	Renovate walking paths	\$ 106,309
Other	Miscl. signs, trees, furniture	\$ 92,487
TOTAL		\$ 4,716,851

PROPOSED OPERATIONS ESTIMATE

Amenity	Total Per Unit Operations Cost	Δ Qty	Δ Cost
New pumphouse and bathroom	\$ 20,000.00	1	\$ 20,000.00
Expanded Adventure Play	\$ 7,500.00	1	\$ 7,500.00
Multit-use-Diamond	\$ 20,000.00	-2	\$ (40,000.00)
Group Shelter	\$ 4,000.00	1	\$ 4,000.00
Splash Pad	\$ 35,000.00	1	\$ 35,000.00
Difference			\$ 26,500.00