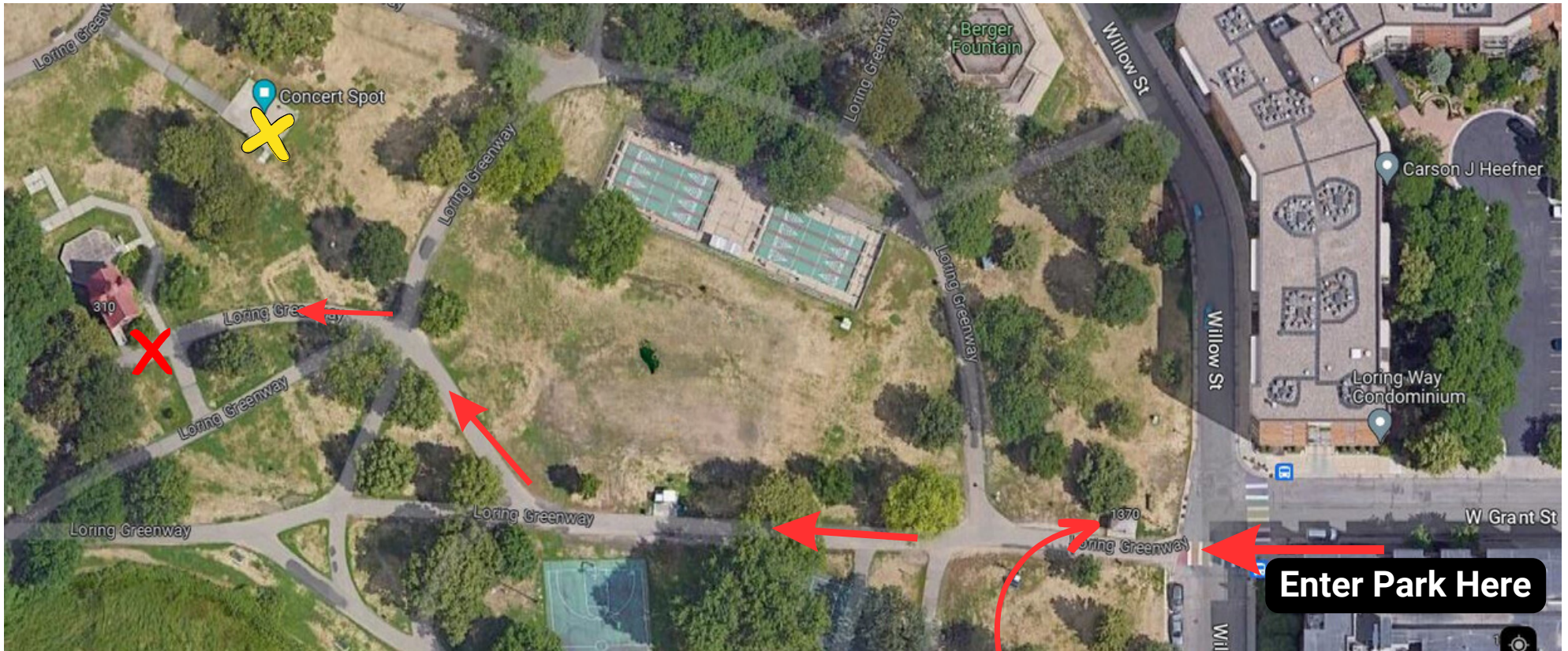


Loring Park Map



X Identifies Parking for staff and performers

X Identifies stage



This is what the pergola information structure looks like and where it's located

All music will be performed at the yellow X or the location labeled "Concert Spot" on the map. For unloading enter Loring Park at the intersection of Willow Street and Grant Street, you will see a Minneapolis Parks and Recreation information pergola structure at the entrance. ***Please drive slowly with your hazards on, these are pedestrians paths.*** Parking passes will be issued onsite by Sound Techs which will allow you to park inside Loring Park. Parking passes should be placed on the vehicles drivers side dashboard.