

# GLEN GALE PARK



## LOCATION AND HISTORY

Glen Gale Park is an oval-shaped green space within the curvilinear neighborhood between Broadway and 26th Avenues. The park was donated to the city by being dedicated as parkland in the plat of Forest Heights in 1883. Other park properties dedicated in the plat were Cottage Park, Irving Triangle and Oliver Triangle. The park was named for Samuel C. Gale, a prominent settler, scholar, attorney, and realtor who donated the land to the park board. Gale was an early proponent of parks in the city. He platted parks in his real estate development in 1873, ten years before the park board was created.

The first improvements to Glen Gale Park were made in 1909. The center of the park, which Theodore Wirth noted was about a foot below the street grade, was used for a skating rink and playground. An associated warming house was removed at the request of area residents in 1925. Petitions to create a baseball or softball field at Glen Gale were turned down in 1914 and again in 1932.

A play area was built in Glen Gale in 1968 as part of an effort to provide more facilities for children in the neighborhood and was renovated in 1987. New playground equipment was installed in 2010.

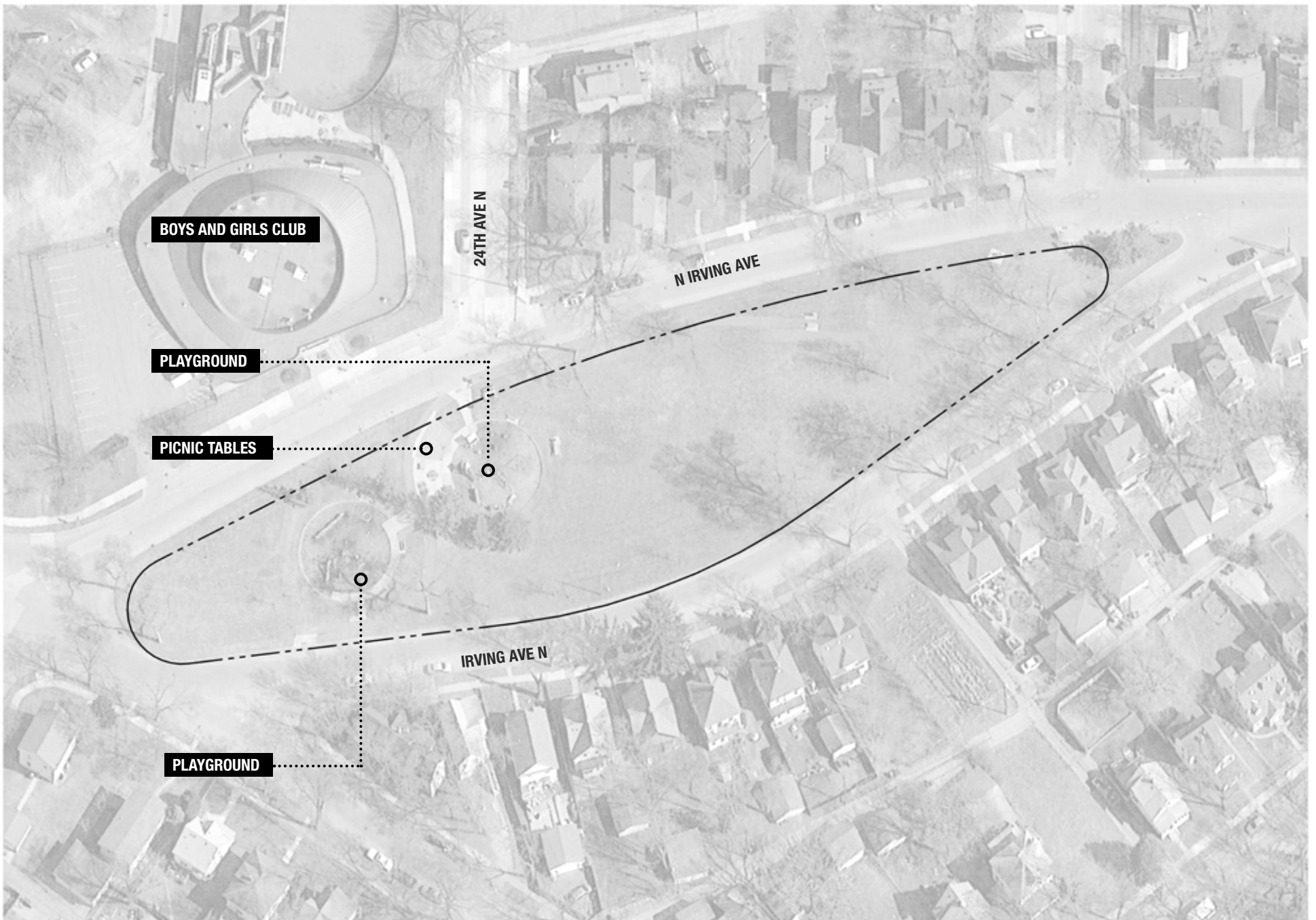
## EXISTING CONDITIONS AND CHARACTER

Glen Gale's unusual shape has historically limited the Park Board's ability to implement major recreation features (the likely reason for the turned-down petitions in the early 1900s). It is flanked by two halves of Irving Avenue, which create unusual and confusing intersections where they come together with other streets at the northern and southern points of the park. Glen Gale is nevertheless an important and active park for the neighborhood and for the Jerry Gamble Boys and Girls Club building across the street to the east.

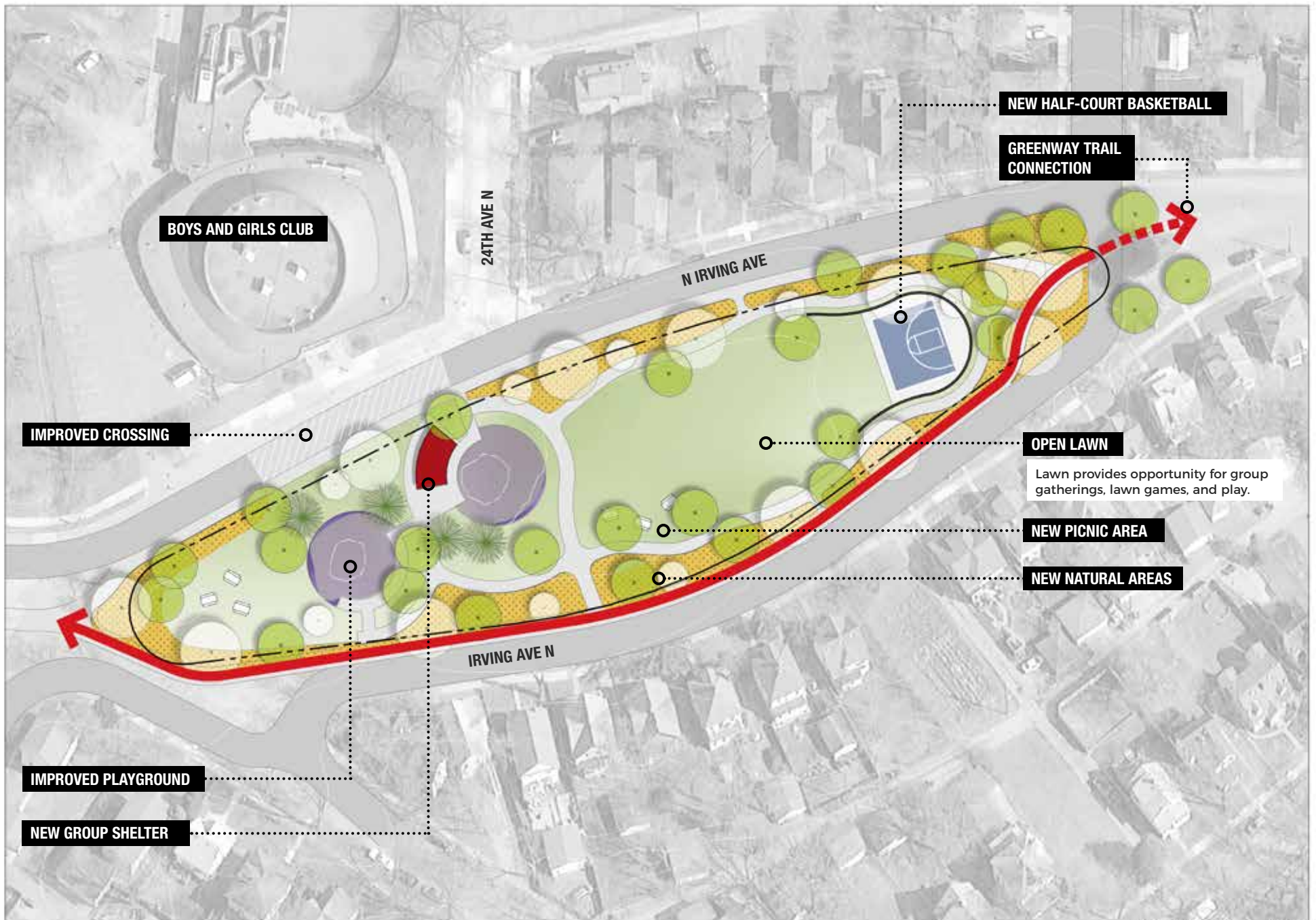
A play area occupies the northern third of the park. Picnic tables allow for seating options nearby. The southern two-thirds of the park is open lawn that can get wet after rainfall events. It has likely been filled since Wirth's day and likely still retains water, as it did long ago. Though the size and shape of the park might limit options, the open green space does provide necessary breathing room in a dense urban neighborhood.

## THE PROPOSED DESIGN

The design for Glen Gale capitalizes on the park's shape, adjacent uses, and a proposed greenway to enhance recreational and habitat options in the park. The play area remains where it is. A new open air picnic shelter covers some of the picnic area adjacent to the play area. Additional picnicking options occupy the northern point of the park and the area just south of the play area.



**EXISTING CONDITIONS: GLEN GALE PARK**



**PROPOSED PLAN: GLEN GALE PARK**

SCALE 1"=20' 0" 10' 20' 30' 40' 50' 60' 70' 80' 90' 100'

An enhanced street crossing creates a better connection between the park and the Boys and Girls Club. This crossing could be very wide to allow for easy flow of kids back and forth, and could also include striping, a raised speed table, signage, or even on-street art.

At the far southern end of the park, a new half-court basketball court nestles in. This facility would likely require fencing to prevent balls from rolling into Irving Avenue. One of the major improvements to the park is the inclusion of the Northside Greenway, which provides opportunity to enhance the park and connect it to other, larger parks with additional athletic facilities. The Greenway runs along the western edge of the park and would regularize and improve the northern and southern intersections. Additional walking trails in the park allow for a loop inside the park, while naturalized areas around the edges improve habitat and visual quality for park and Greenway users. The open lawn area in the middle is retained for pick-up games and other activities.

Glen Gale may never have enough space for large baseball or soccer fields. The design's insertion of a few additional activities and the ability to connect to other parks will improve the user experience at this long skinny green space.

## **CONNECTIONS BETWEEN PARKS**

The proposed Northside Greenway, which the NSAMP supports, would run through the edge of the park, connecting northward to Jordan and Folwell Parks and the Grand Rounds at Victory Memorial Parkway. Southward, the Greenway extends to within a block of North Commons Park.

## **KNOWN LAND USE AND COORDINATION ISSUES**

Implementation of improvements associated with the Northside Greenway and changes to Irving Avenue intersections and crossings will require coordination with the City of Minneapolis.

# PROCESSES

	<b>1: General Input</b> <b>Spring-Fall 2017</b> <i>Input themes prior to initial concepts</i>	<b>2: Initial Concepts</b> <b>Winter 2018</b> <i>Input themes on initial concepts</i>	<b>3: The Preferred Concept</b> <b>Now</b> <i>Key elements of the concept</i>
aquatics	Add a pool →	no comments →	No aquatic facilities planned for this park; park too small for this amenity
play	Request for rock climbing →	no comments →	Improved traditional play area in same general location; equipment details to be considered with community input during detailed design.
	Add more swings, slides, and tables		
athletics	no comments →	no comments →	Enhanced open lawn for group gatherings and unprogrammed sports play
courts	Request for basketball courts →	no comments →	New half-court basketball
winter	no comments →	no comments →	No winter activities planned for this park
landscape	no comments →	no comments →	Natural areas included around edges of park
other	More special events: movies in the park, Asian night, soul night, etc.	Add Northside Greenway along Irving →	New picnic shelter near playground; opportunity for picnic tables at south end of park
	Add more picnic tables →		Improved crossing to Boys and Girls Club Northside Greenway accommodated along edge of park New walking trail loop within park

## COST ESTIMATE

Park Name	Asset Type	Project	2019 ESTIMATED COST/PROJECT	NOTES
Glen Gale	Play	Traditional Play Structure in existing container	\$ 806,809	
Glen Gale	Athletics	Multi-use Athletic Field Renovation	\$ 360,691	
Glen Gale	Courts	Basketball Court (half court)	\$ 75,935	
Glen Gale	Landscape	Naturalized areas	\$ 19,933	
Glen Gale	Other	Group picnic shelter	\$ 104,411	
Glen Gale	Other	Renovate walking paths	\$ 440,423	A portion of pathway renovation will be part of the Northside Greenway project
Glen Gale	Other	Miscl. signs, trees, furniture	\$ 36,164	
Glen Gale		<b>TOTAL</b>	<b>\$ 1,844,365</b>	

## OPERATIONS ESTIMATE

GLEN GALE				
FACILITIES	Total Per Unit Operations Cost	△ Qty	△ Cost	
Half Court Basketball	\$ 1,000	1	\$ 1,000	
Group Shelter	\$ 4,000	1	\$ 4,000	
Trail Additions	\$ 5,000	1	\$ 5,000	
Difference			\$ 10,000	