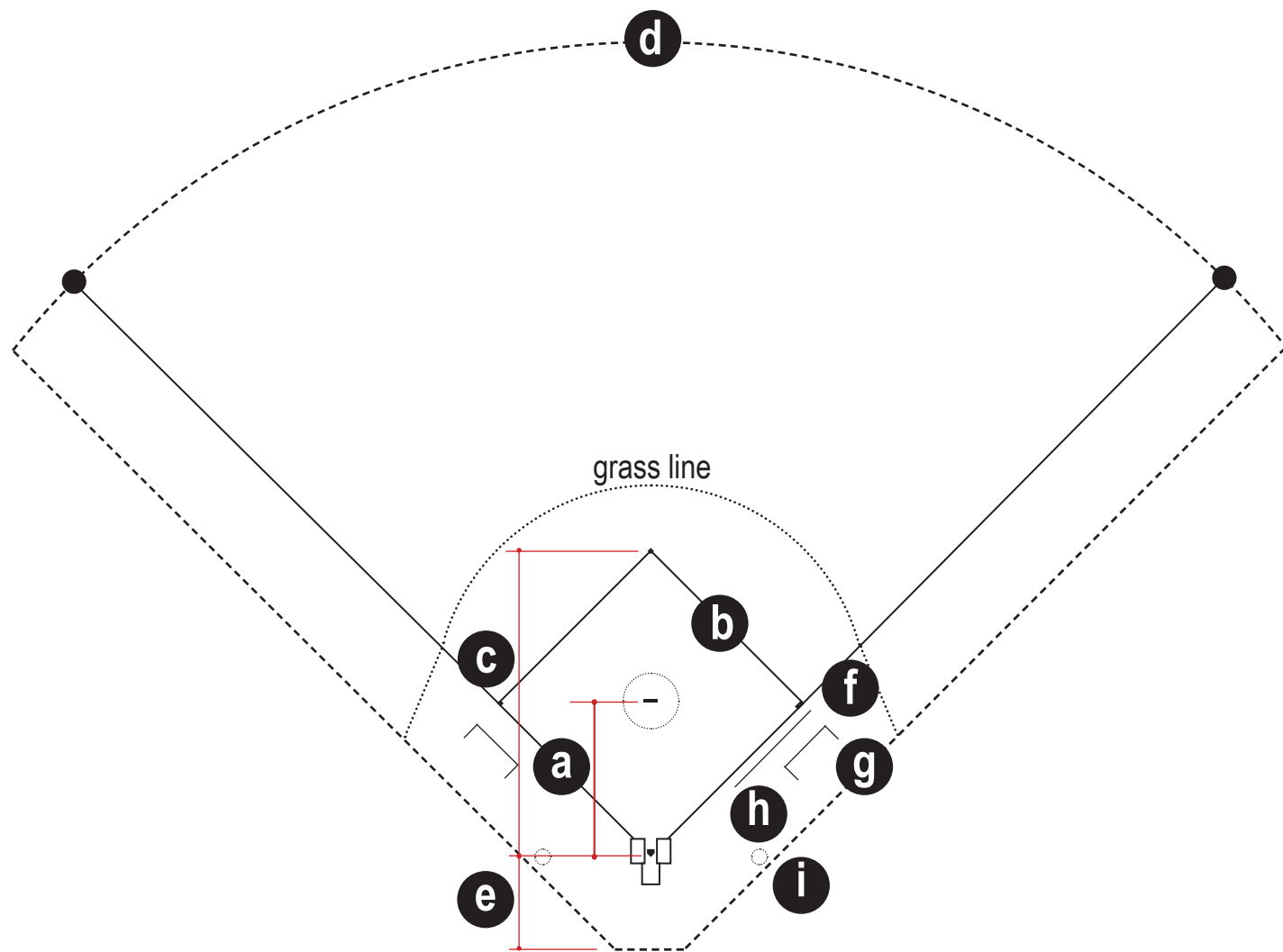


Field layout

Level of play	Pitching rubber to home plate	Base lengths	Home plate to second base	Outfield fence
	a	b	c	d
10U	46 feet	60 feet	84 feet, 10-1/4 inches	
12U	52 feet	75 feet	107 feet, 8 inches	200 feet
13U to 15U	60 feet, 6 inches	90 feet	127 feet, 3-3/8 inches	300 feet
18U, high school, m	60 feet, 6 inches	90 feet	127 feet, 3-3/8 inches	300 feet at foul lines, 400 feet at centerfield
...	
...	
Notes	e	Distance between home plate and backstop is 60 feet.		
	f	Double first base used at 10U and 12U.		
	g	Three foot base line is 3 feet into foul territory and half the distance to home plate and first base.		
	h	Coaches box are 5 feet by 20 feet and 15 feet into foul territory.		
	i	On Deck circle is 5 feet in diameter, behind home plate, and ideally 37 feet from home plate		
	j	Backstop, dugout, and sideline fencing have yet to be determined.		

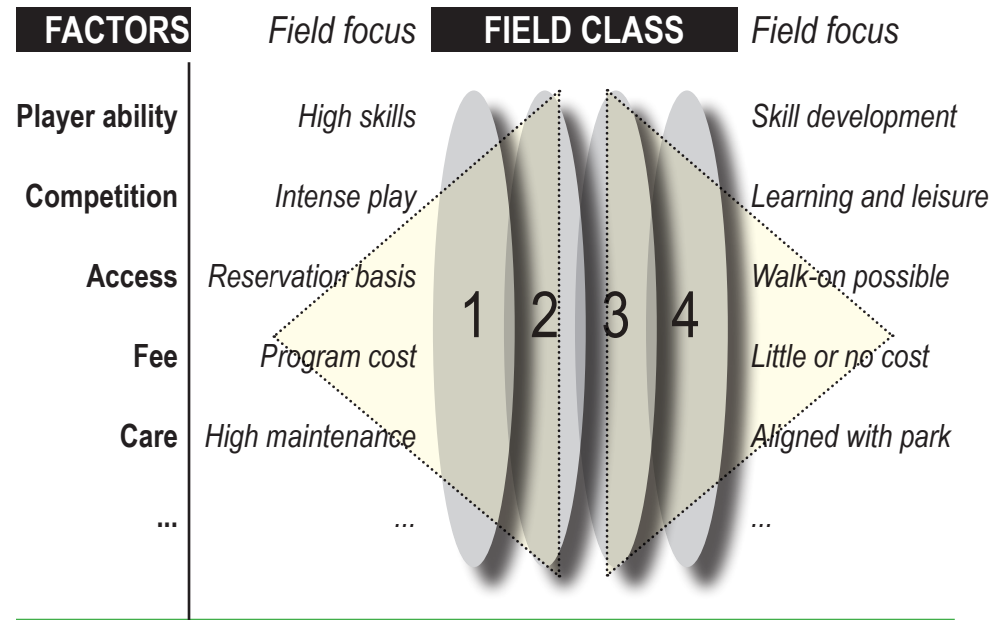
Standard dimensions



Field layout

Level of play	Pitching rubber to home plate	Base lengths	Home plate to second base	Outfield fence
	a	b	c	d
12U and 14 U (fast pitch)	40 feet	60 feet	84 feet, 10-1/4 inches	
12U (slow pitch)	46 feet	60 feet	84 feet, 10-1/4 inches	
14U, 16U and 18U (slow pitch)	50 feet	65 feet	91 feet, 11 inches	
High school, women and college (fast pitch)	43 feet	60 feet	84 feet, 10-1/4 inches	225 feet
Men (fast pitch)	46 feet	60 feet	84 feet, 10-1/4 inches	
Adult (slow pitch)	50 feet	70 feet	99 feet	
Notes	e	Distance between home plate and backstop is 25 feet.		
	f	Double first base used at all levels except college fast pitch.		
	g	Three foot base line is 3 feet into foul territory and half the distance to home plate and first base.		
	h	Coaches box are 3 feet by 15 feet and 8 feet into foul territory.		
	i	On Deck circle is 5 feet in diameter, behind home plate, and ideally 30 feet from home plate		
	j	Backstop, dugout, and sideline fencing have yet to be determined.		

Standard dimensions



Field class

- REQUIRED** Feature shall be present for best play experience
- PREFERRED** Feature is desired to enhance play experience
- OPTIONAL** Feature may be present if conditions, funding, and operations are supportive and experience of play is enhanced
- NOT REQUIRED** Feature is not needed to support experience for that field's level of play

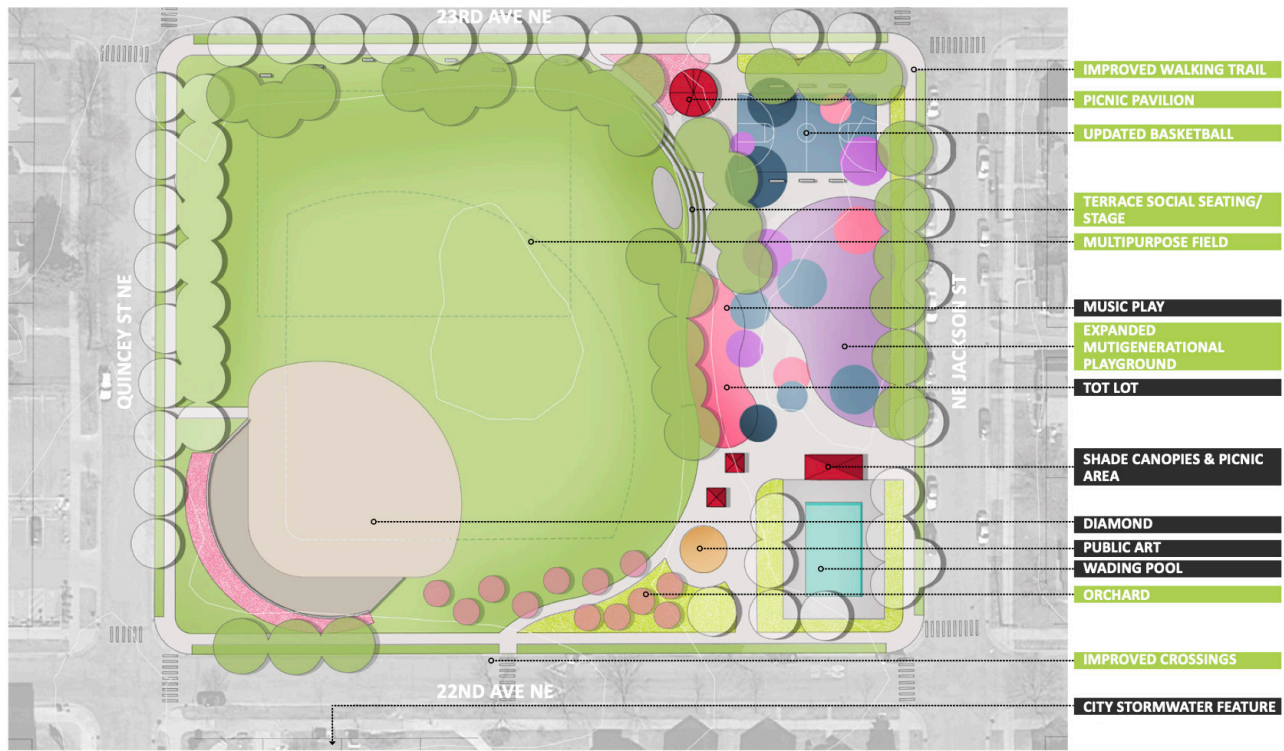
Features key

	FIELD CLASS			
	1	2	3	4
Player Safety				
Safety fencing at players bench	REQ	REQ		
Safety fencing at bull pen	REQ			
Non-overlapping field	REQ			
Field characteristics				
Lighting	REQ	REQ		
Outfield fencing	REQ			
Semi-permanent outfield fencing		REQ		
Foul line poles	REQ	REQ		
Warning track	REQ			
Play characteristics				
Full backstop	REQ			
Adjustable bases	REQ	REQ		
Permanent bases	REQ			
Scoreboard		REQ		
Dugouts	REQ	REQ	REQ	
Players benches				
Drinking fountain		REQ		
Electricity source	REQ			
Batting cage	REQ			
Team equipment shed	REQ			
Maintenance				
Field equipment shed		REQ		
Irrigation		REQ		
Weed-free infield		REQ		
Rain cover				
Spectating				
Seating				
Protected seating				
Covered seating		REQ		
Concessions	REQ			

Standard features - BASEBALL

	FIELD CLASS			
	1	2	3	4
Player Safety				
Safety fencing at players bench	REQ	REQ		
Safety fencing at bull pen	REQ			
Non-overlapping field	REQ			
Field characteristics				
Lighting	REQ	REQ		
Outfield fencing	REQ			
Semi-permanent outfield fencing		REQ		
Foul line poles	REQ	REQ		
Warning track	REQ			
Play characteristics				
Full backstop	REQ			
Adjustable bases	REQ	REQ		
Permanent bases	REQ			
Scoreboard		REQ		
Dugouts	REQ	REQ	REQ	
Players benches				
Drinking fountain		REQ		
Electricity source	REQ			
Batting cage	REQ			
Team equipment shed	REQ			
Maintenance				
Field equipment shed		REQ		
Irrigation		REQ		
Weed-free infield		REQ		
Rain cover				
Spectating				
Seating				
Protected seating				
Covered seating		REQ		
Concessions	REQ			

Standard features - SOFTBALL



One-field configuration



Two-field configuration



Four-field configuration