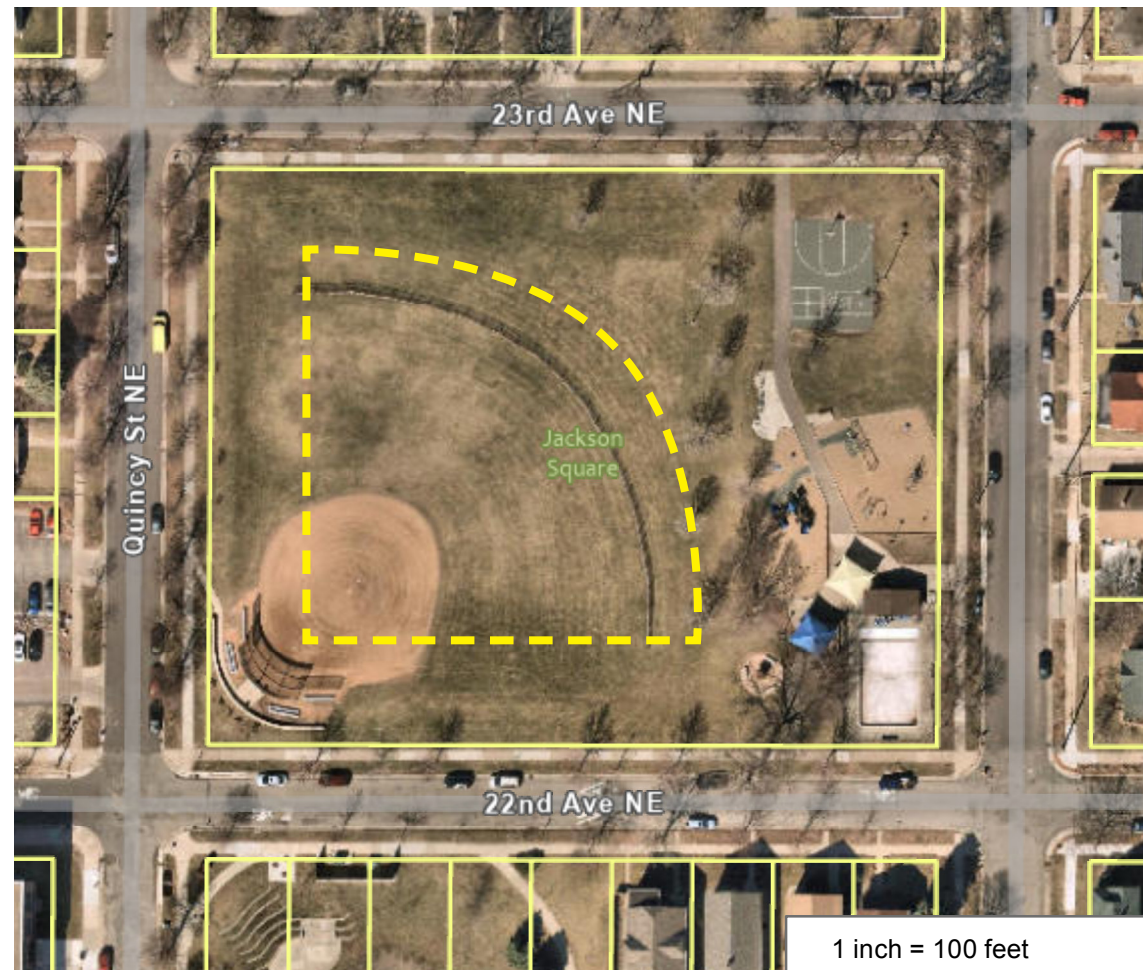


Field improvements



Field layout

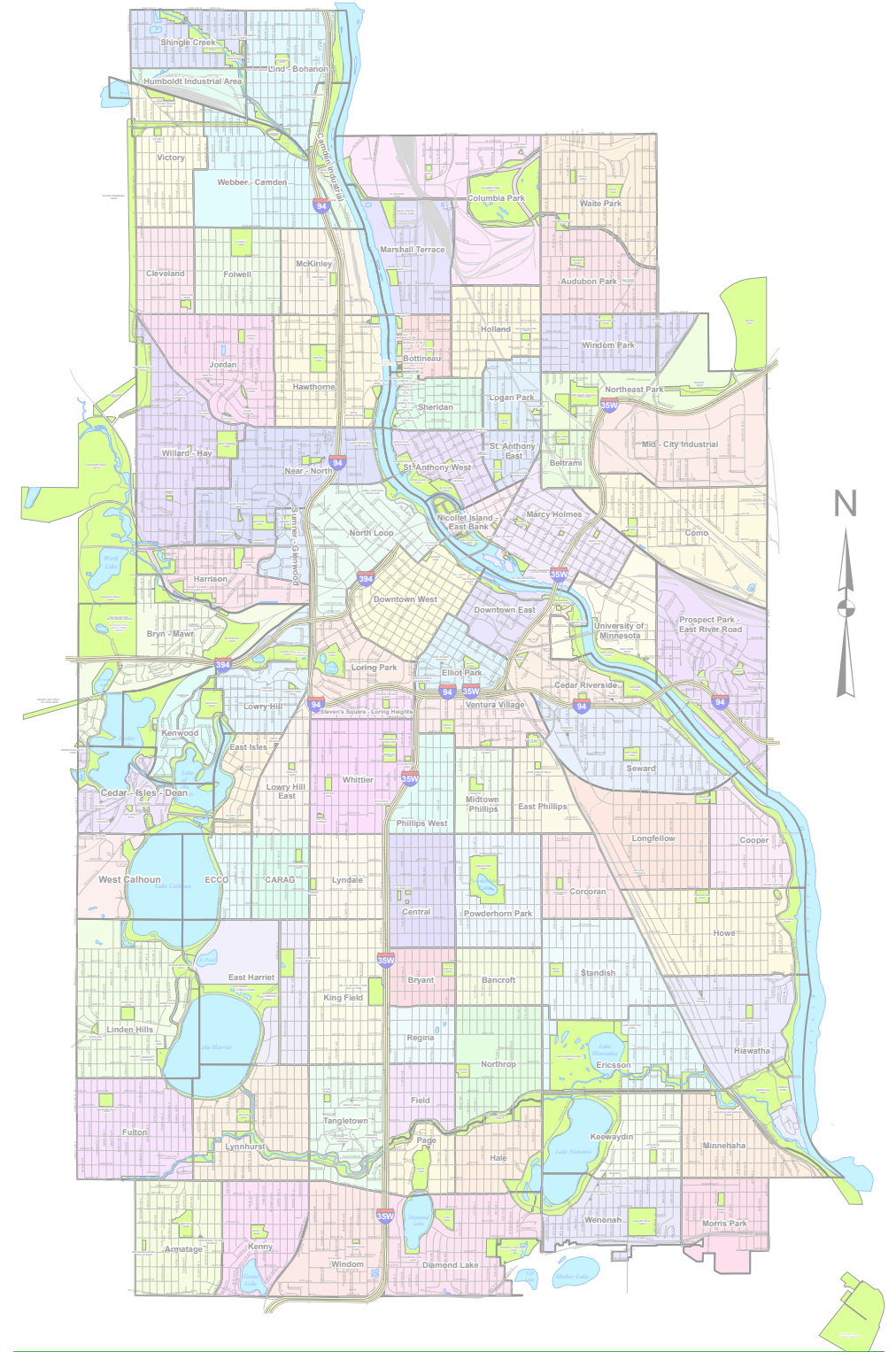


Player safety	fencing present at team benches but not at bull pen ground condition is good
Field characteristics	outfield at 200 would require adjustment to 225' no foul poles no field lighting
Play features	full backstop present field set for softball no scoreboard no covered dugouts drinking fountain present no electricity batting cage not present team equipment shed not present
Maintenance features	equipment shed not present irrigated
Spectator features	seating present no concessions

Field conditions

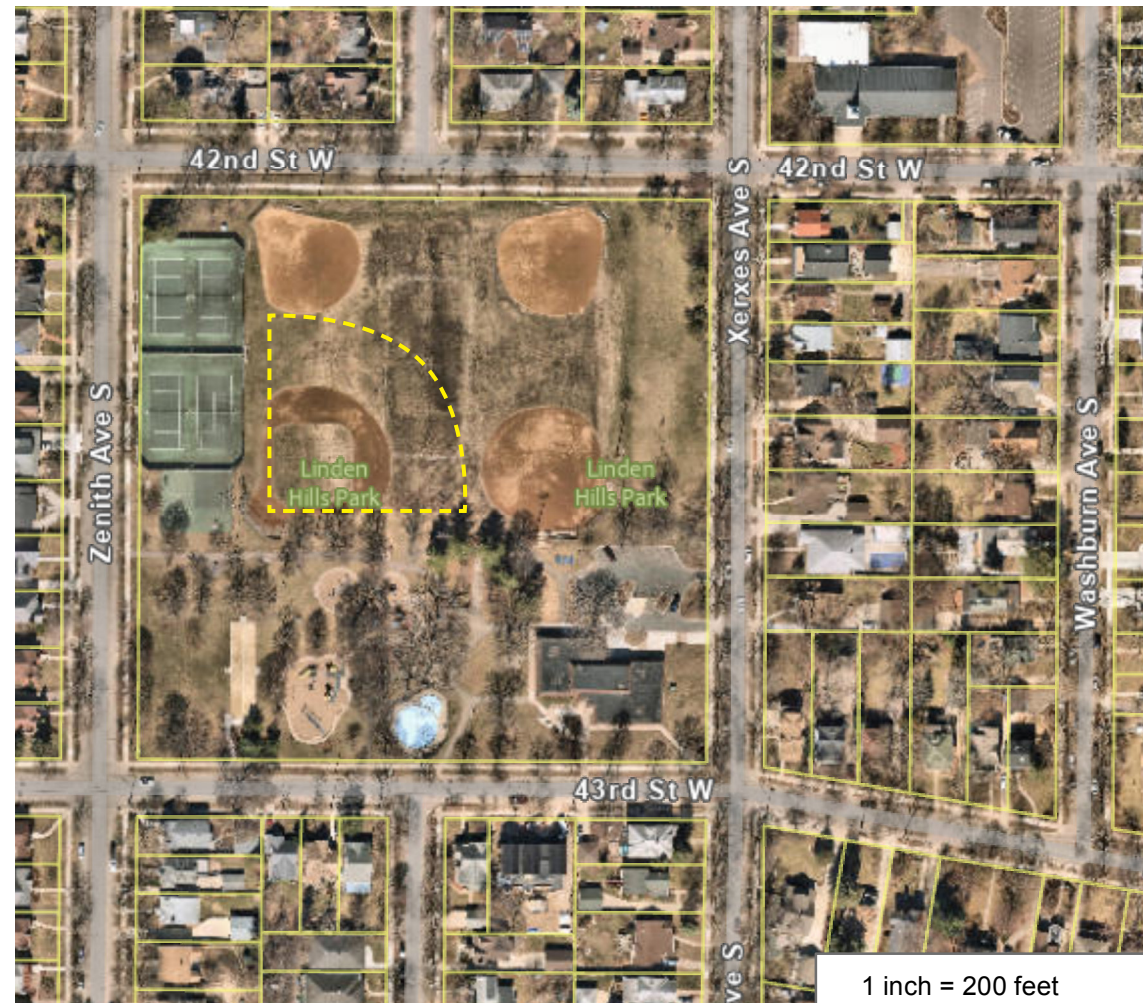
Service area:	Northeast
Current designation:	Tier 3
Long-range plan:	multi-purpose field, change-able outfield fencing
CIP year:	2026
CIP amount:	\$911,000

System alignment



Location in the MPRB system

Field improvements



Field layout

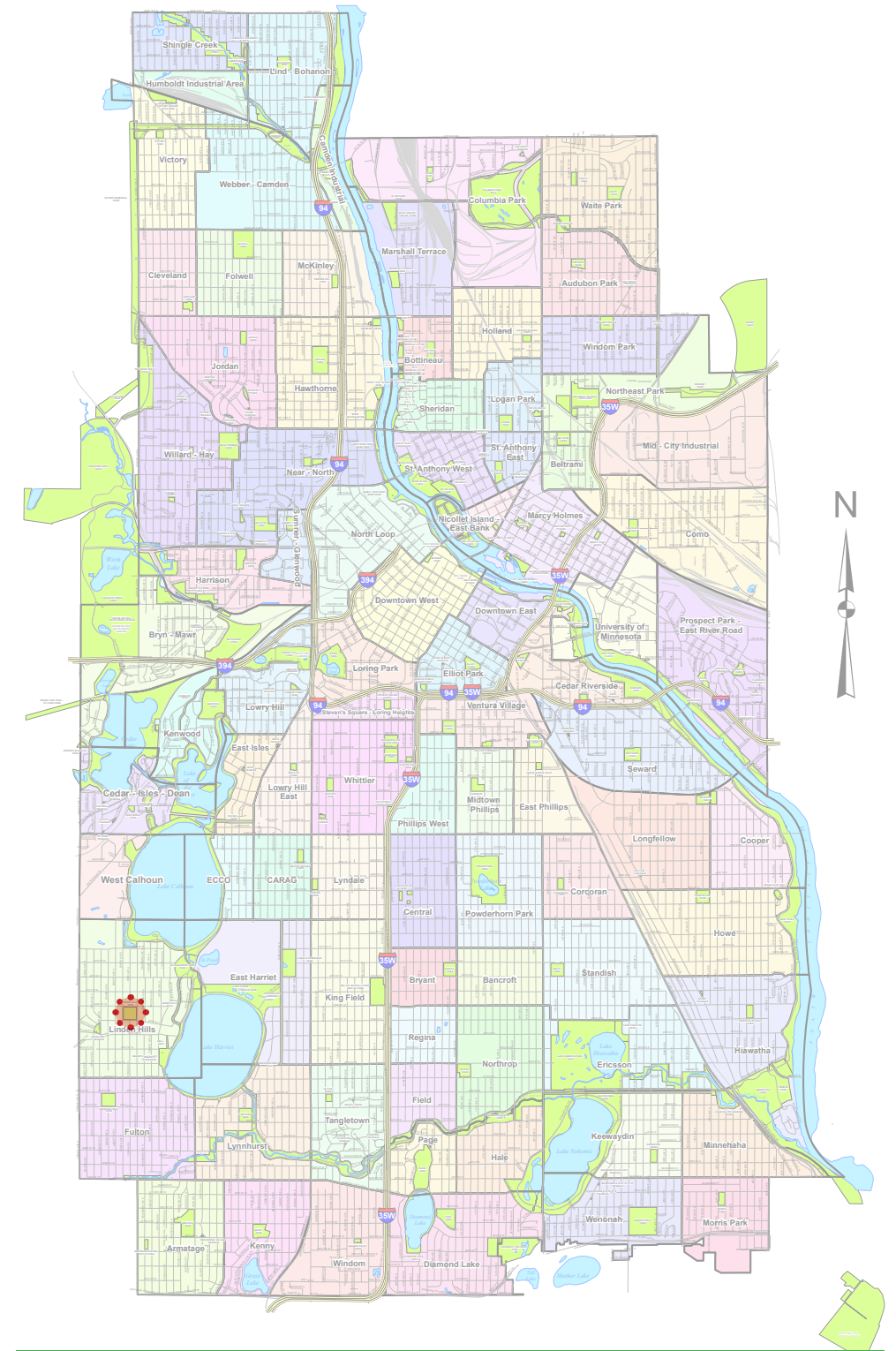


Player safety	fencing present at team benches but not at bull pen ground condition is bad
Field characteristics	outfield at 200; would require adjustment to 225' no foul poles field lighting
Play features	full backstop present field set for baseball; would require infield removal no scoreboard no covered dugouts drinking fountain present electricity source present batting cage not present team equipment shed not present
Maintenance features	equipment shed not present no irrigation
Spectator features	no seating no concessions

Field conditions

Service area:	Southwest
Current designation:	Tier 4
Long-range plan:	multi-use fields, fields reduced from four to two
CIP year:	not in current CIP
CIP amount:	not applicable

System alignment



Location in the MPRB system

Field improvements



Field layout

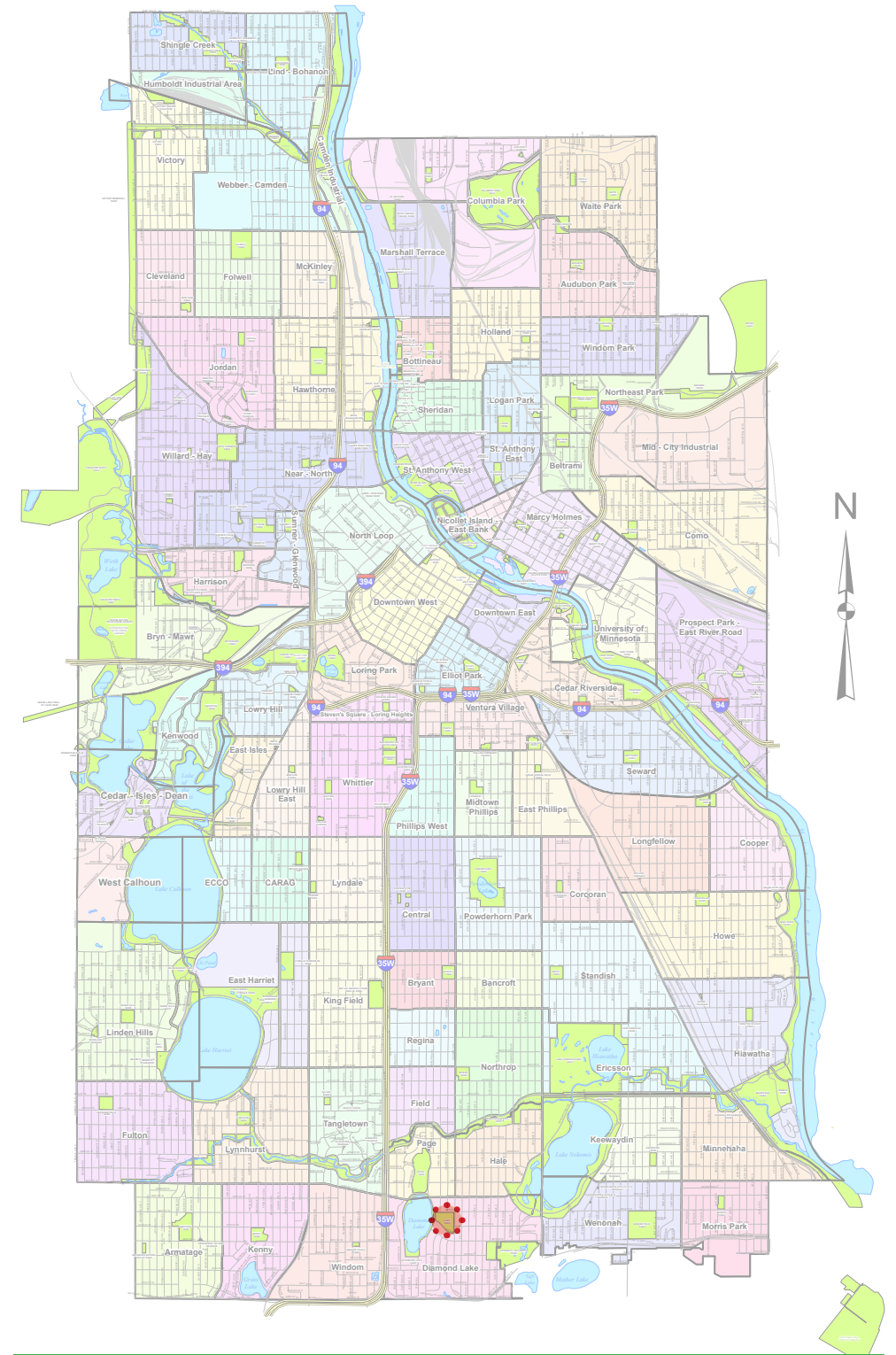


Player safety	fencing present at team benches but not at bull pen ground condition is poor
Field characteristics	outfield at 200 would require adjustment to 225' no foul poles no field lighting
Play features	full backstop present field set for softball no scoreboard no covered dugouts no drinking fountain no electricity batting cage not present team equipment shed not present
Maintenance features	equipment shed not present no irrigation
Spectator features	no seating no concessions

Field conditions

Service area:	South
Current designation:	Tier 3
Long-range plan:	three diamond sport field retained, one for girls softball
CIP year:	2026
CIP amount:	\$866,000

System alignment



Location in the MPRB system

Field improvements



Field layout

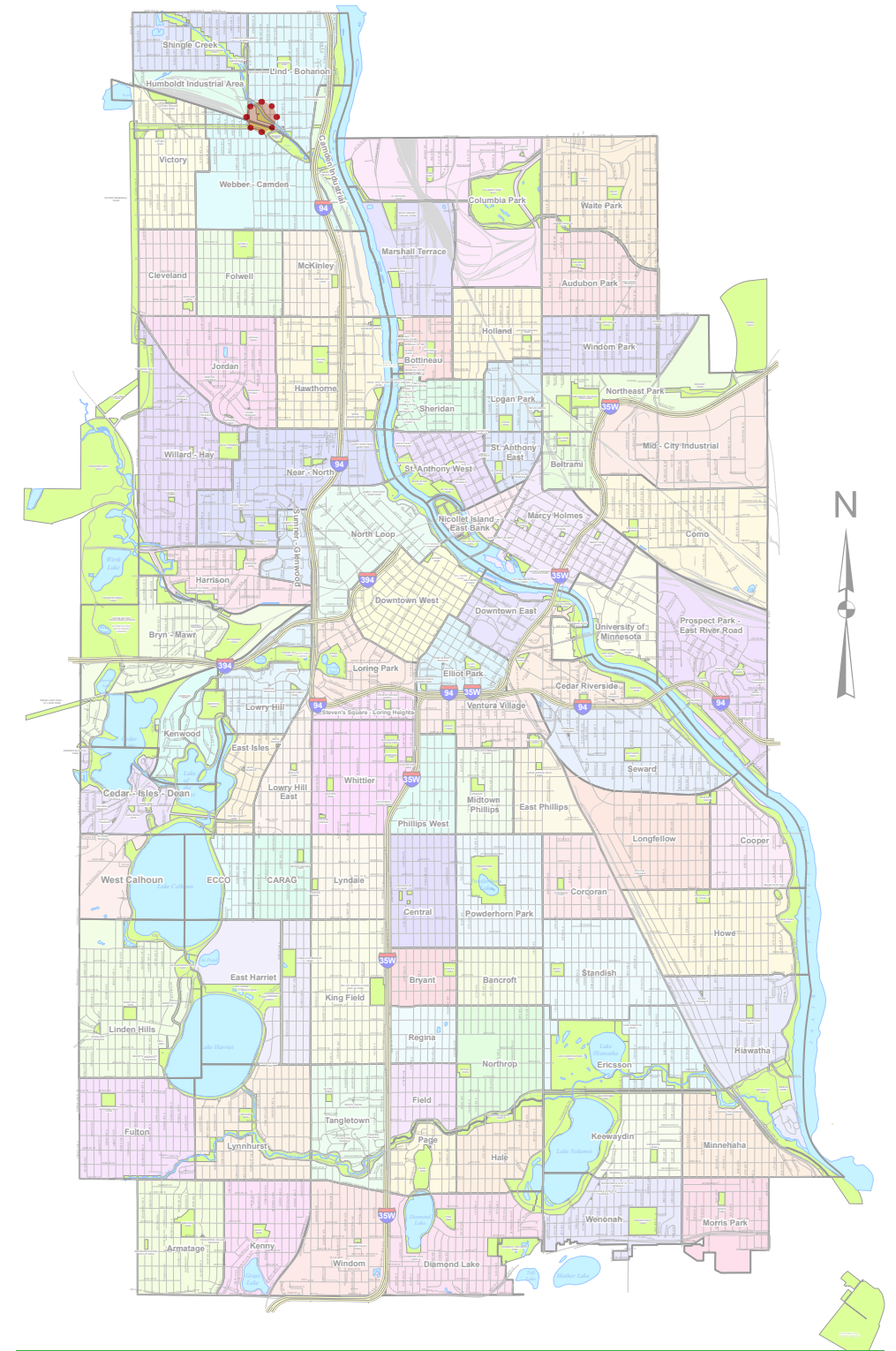


Player safety	fencing present at team benches no bull pen ground condition is good
Field characteristics	outfield at 200 would require adjustment to 225' foul poles no field lighting
Play features	full backstop present field set for softball no scoreboard no covered dugouts no drinking fountain no electricity batting cage not present team equipment shed not present
Maintenance features	equipment shed not present no irrigation
Spectator features	seating no concessions

Field conditions

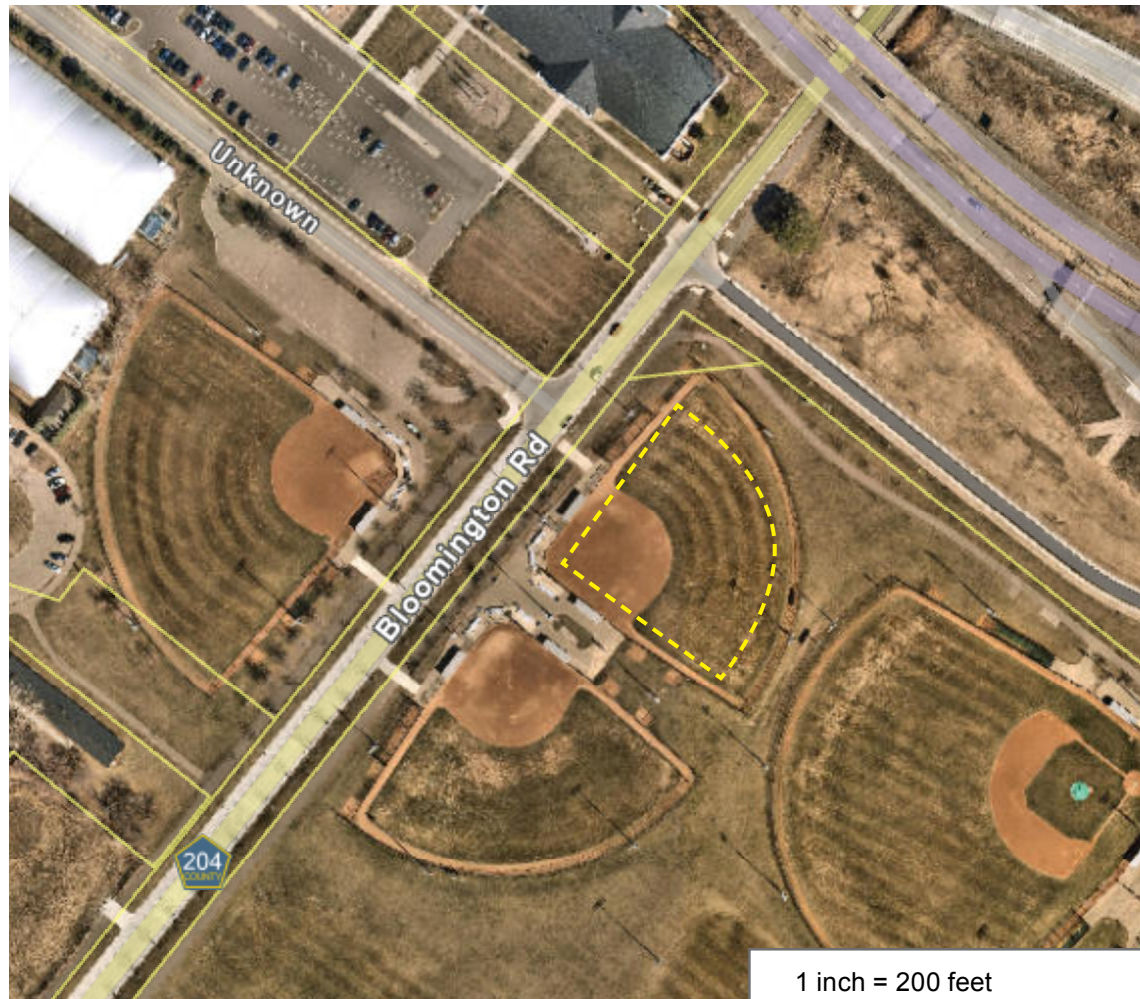
Service area:	North
Current designation:	Tier 2
Long-range plan:	existing diamond sport field retained
CIP year:	2029
CIP amount:	\$1,525,000

System alignment



Location in the MPRB system

Field improvements



Field layout



- Player safety: fencing present at team benches, bull pen fencing, ground condition is very good
- Field characteristics: outfield fencing requires adjustment to 225', foul poles, field lighting
- Play features: full backstop, field set for softball, scoreboard, covered dugouts, drinking fountain?, electricity source?, batting cage not present, team equipment shed not present

Maintenance features: equipment shed not present, irrigation?

Spectator features: no concessions

Field conditions

Service area: not applicable

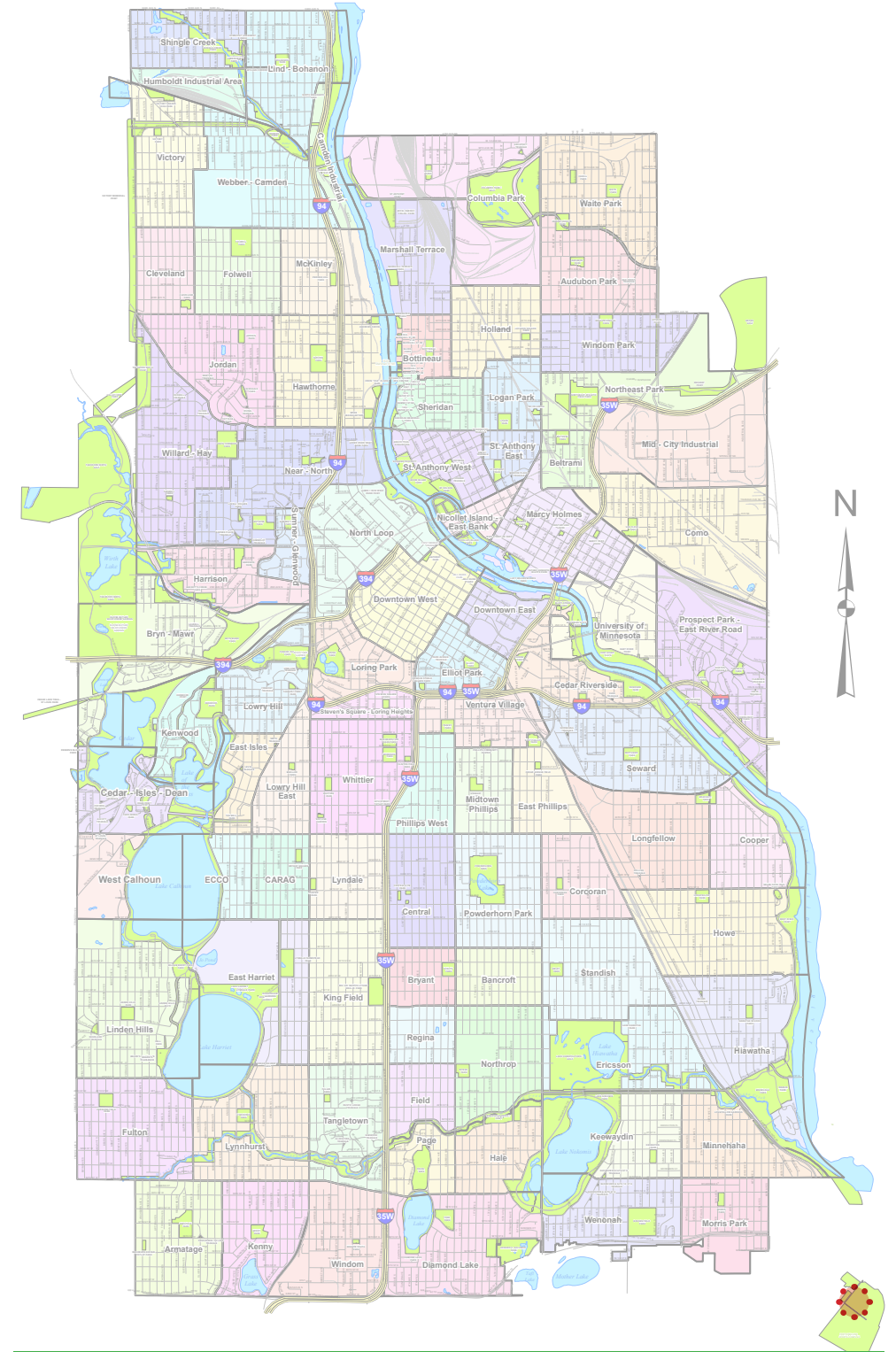
Current designation: Tier 1

Long-range plan: lease with DNR expires in 2029, renewal possible

CIP year: not applicable

CIP amount: not applicable

System alignment



Location in the MPRB system

Field improvements



Field layout

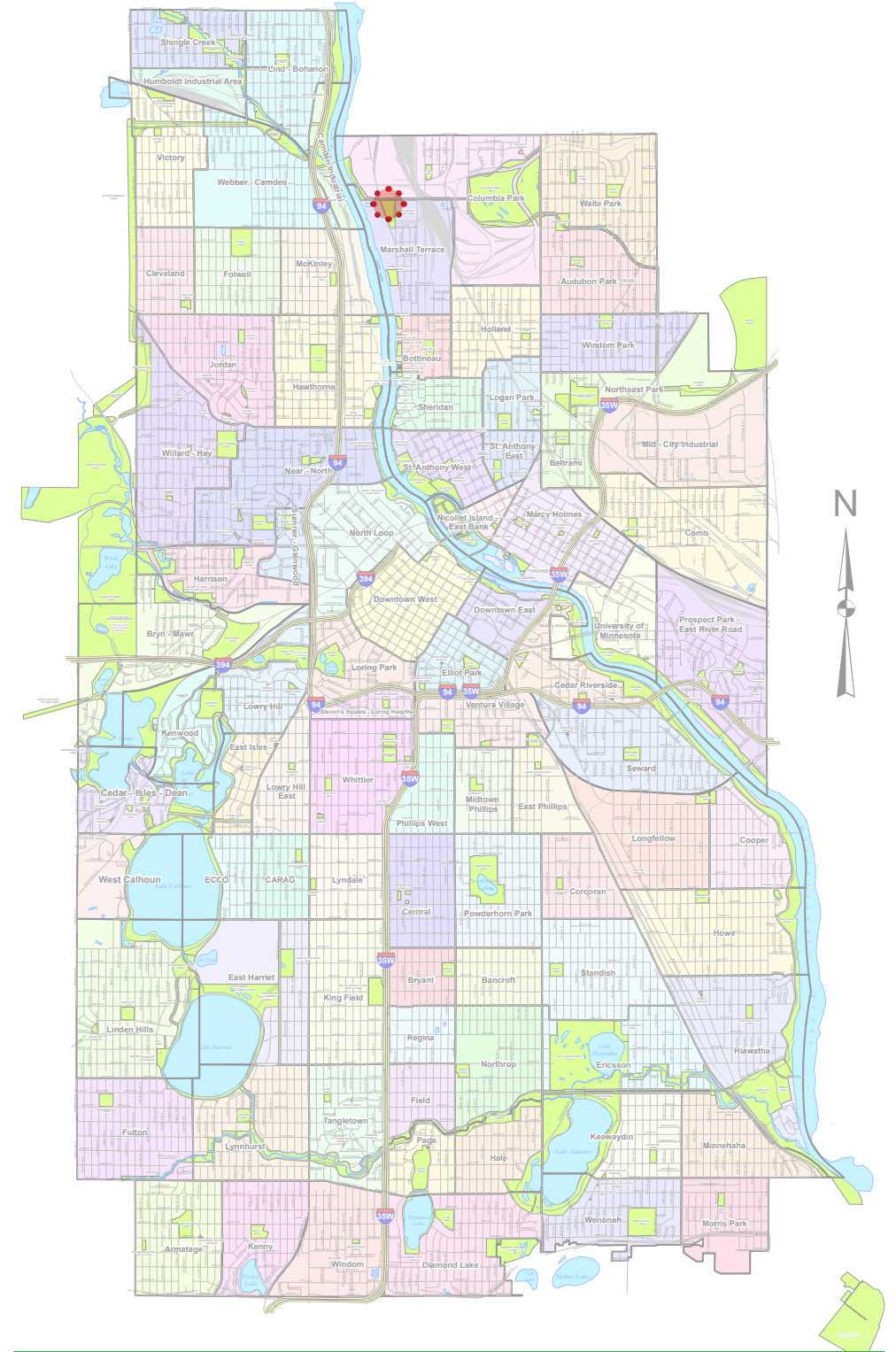


Player safety	fencing present at team benches no bull pen fencing ground condition is artificial in good condition
Field characteristics	outfield requires adjustment to 225' foul poles no field lighting
Play features	full backstop present field set for softball scoreboard covered dugouts drinking fountain no electricity batting cage not present team equipment shed not present
Maintenance features	equipment shed not present
Spectator features	seating no concessions

Field conditions

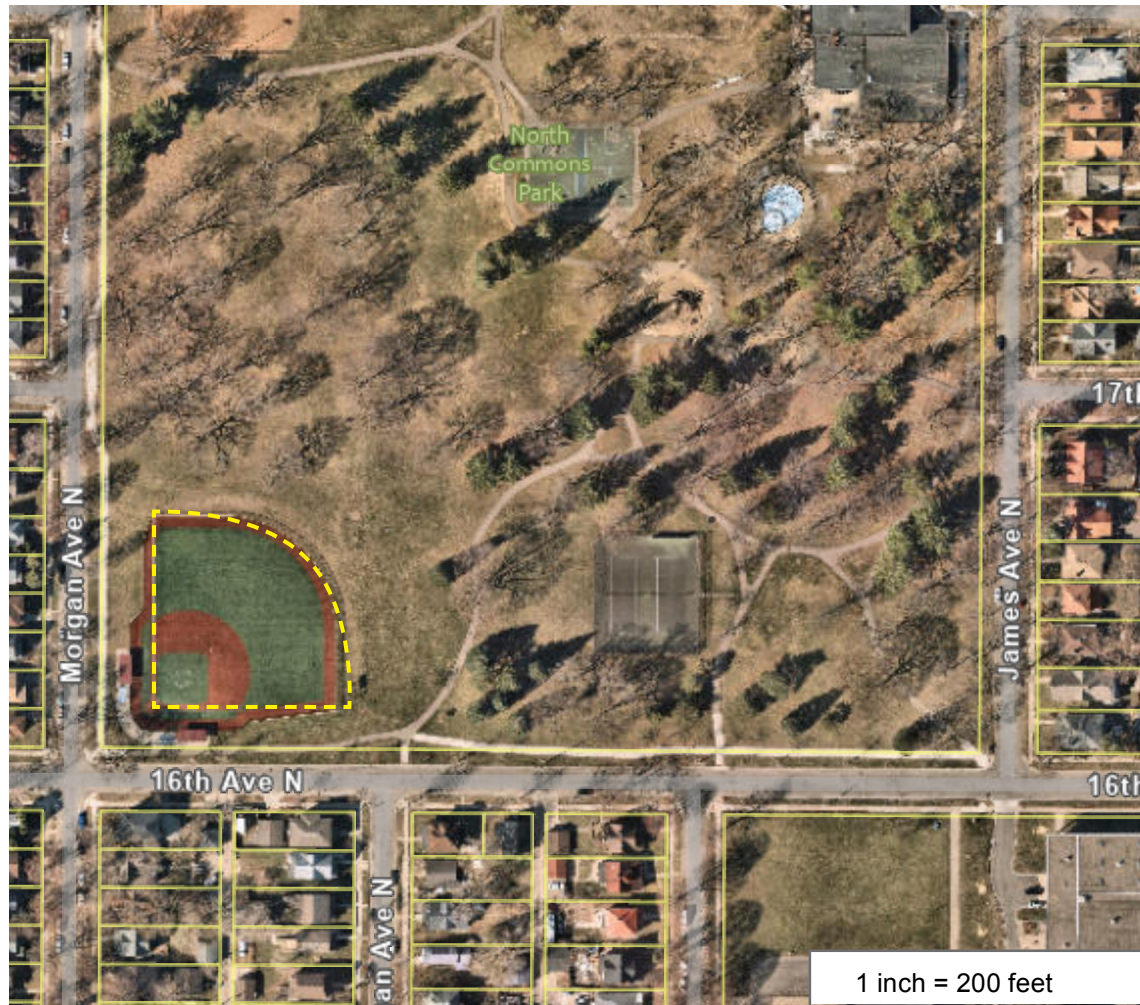
Service area:	Northeast
Current designation:	Tier 1
Long-range plan:	lease with Xcel Energy
CIP year:	not applicable
CIP amount:	not applicable

System alignment



Location in the MPRB system

Field improvements



Field layout



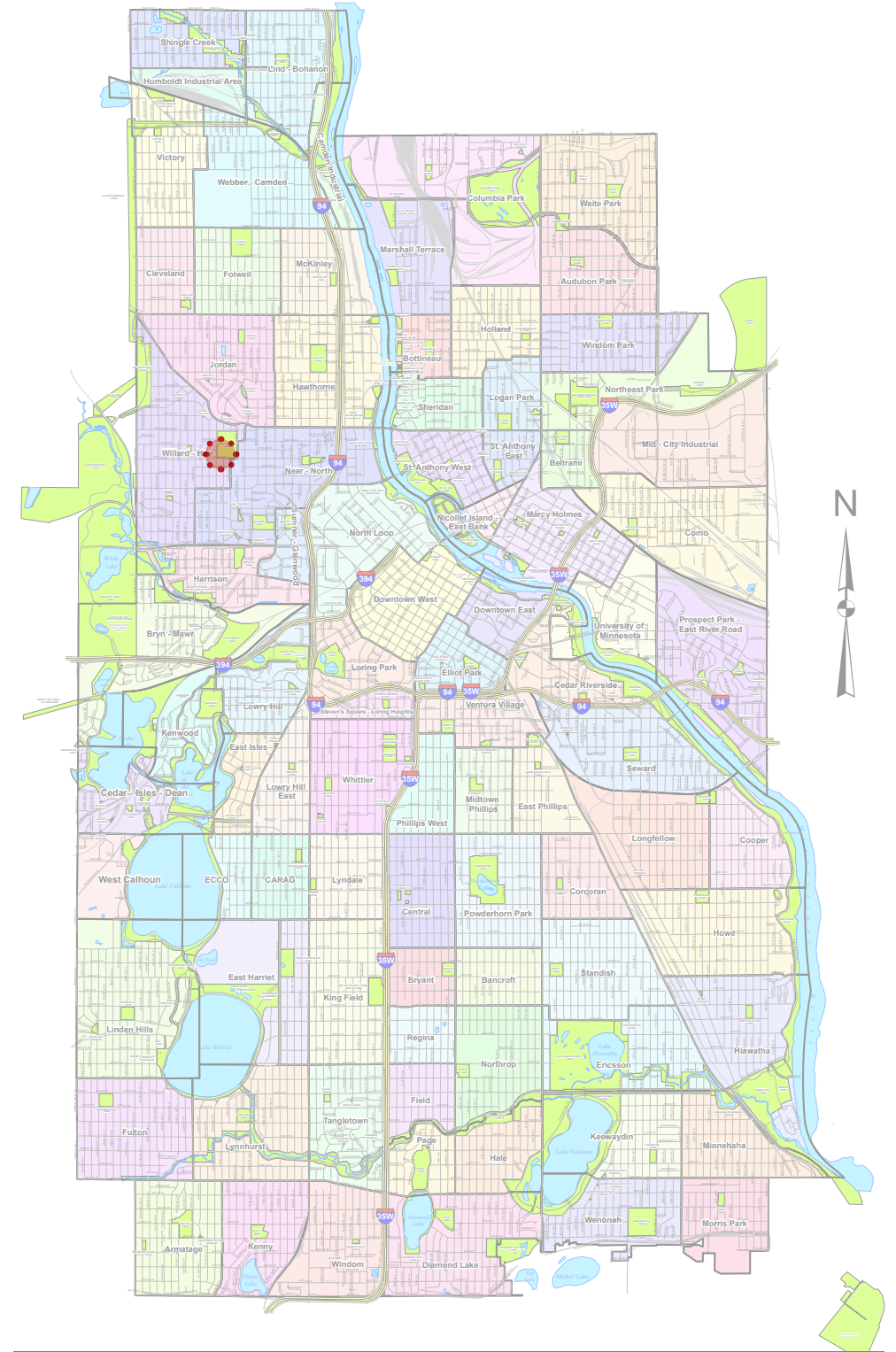
- Player safety fencing present at team benches
no bull pen fencing
ground condition is artificial turf in good condition
- Field characteristics outfield at 225'
foul poles
no field lighting
- Play features full backstop present
field set for softball
scoreboard
covered dugouts
drinking fountain?
electricity source?
batting cage not present
team equipment shed not present

- Maintenance features equipment shed not present
- Spectator features seating
no concessions

Field conditions

- Service area: North
- Current designation: Tier 1
- Long-range plan: existing field retained
- CIP year: 2024
- CIP amount: previously committed

System alignment



Location in the MPRB system