





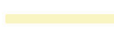

New Recreational Bridge Over Mississippi River

Feasibility Study and Concept Design

Location

Located in Above the Falls Regional Park.

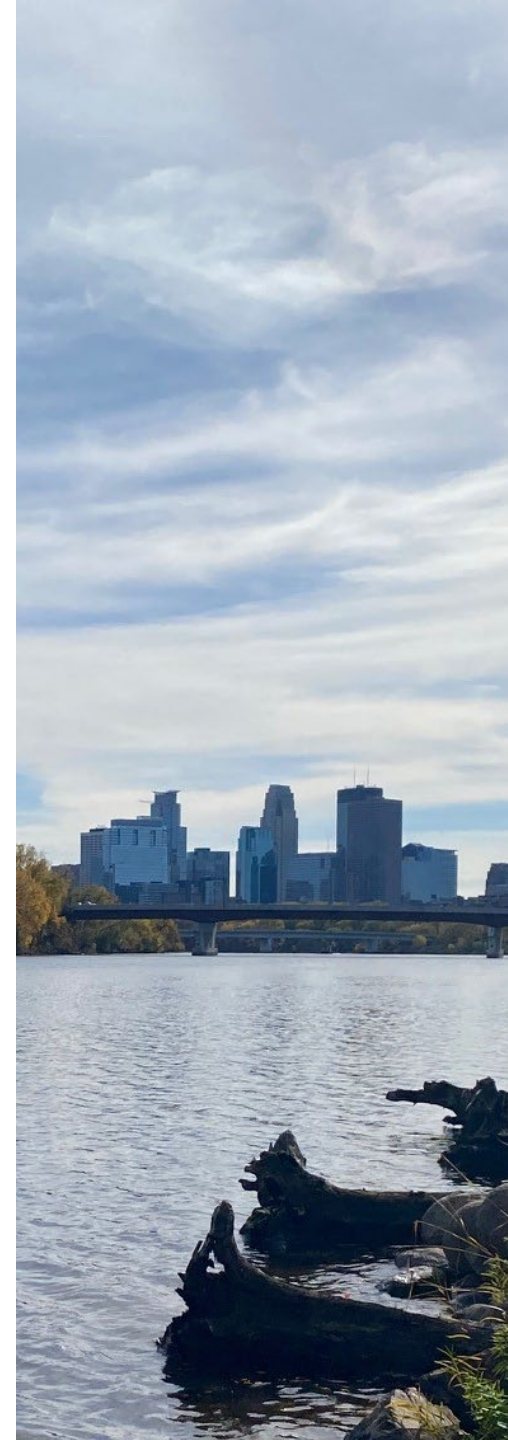
Aligned with the Great Northern Greenway.

-  Great Northern Greenway Corridor
-  Above the Falls Regional Park
-  Adjacent Trails
-  Study Area



Why Explore a New Bridge

- Been in plans for at least 25 years. Noted in MPRB, City, County plans.
- Millions of dollars already spent along corridor already.
- Connect Northside residents to the River!
- BNSF has expressed no desire for a trail on their bridge. Planning and negotiations may take several years or more.
- Existing BNSF bridge is 140 years old. Requires major retrofitting and safety measures (train and trail on same bridge).
- Non-vehicular means less stress. Lowry, Broadway, Plymouth have fast-moving vehicles that contribute to higher stress levels and less healthy air quality.
- New bridge will be specifically designed for humans.
- Being led by the MPRB, and a landscape architect, it allows for a river crossing more aligned with the characteristics of a park, not just a transportation conduit.
- Makes a 5-mile riverfront trail loop when coupled with regional trails and the Stone Arch Bridge, completely separate from traffic.



The Project Basics

The project will:

1. By the end of November:

Determine feasibility of a new non-vehicular bridge over the Mississippi River, aligned with the Great Northern Greenway.

2. By Mid 2024:

Develop a concept plan for the new bridge and its connections to existing and planning bicycle and pedestrian facilities.



The Design Team

West 8 – Philadelphia

- Project lead
- Landscape architecture
- Creativity
- Understands designing for community

sbp – New York City

- Bridge architecture
- Structural engineering
- Ability to match uniqueness to budget

Barr Engineering – Twin Cities

- Permitting and geotechnical
- River knowledge

TC^2 – Twin Cities

- Community engagement
- Developing connections

Project Budget: \$300,000



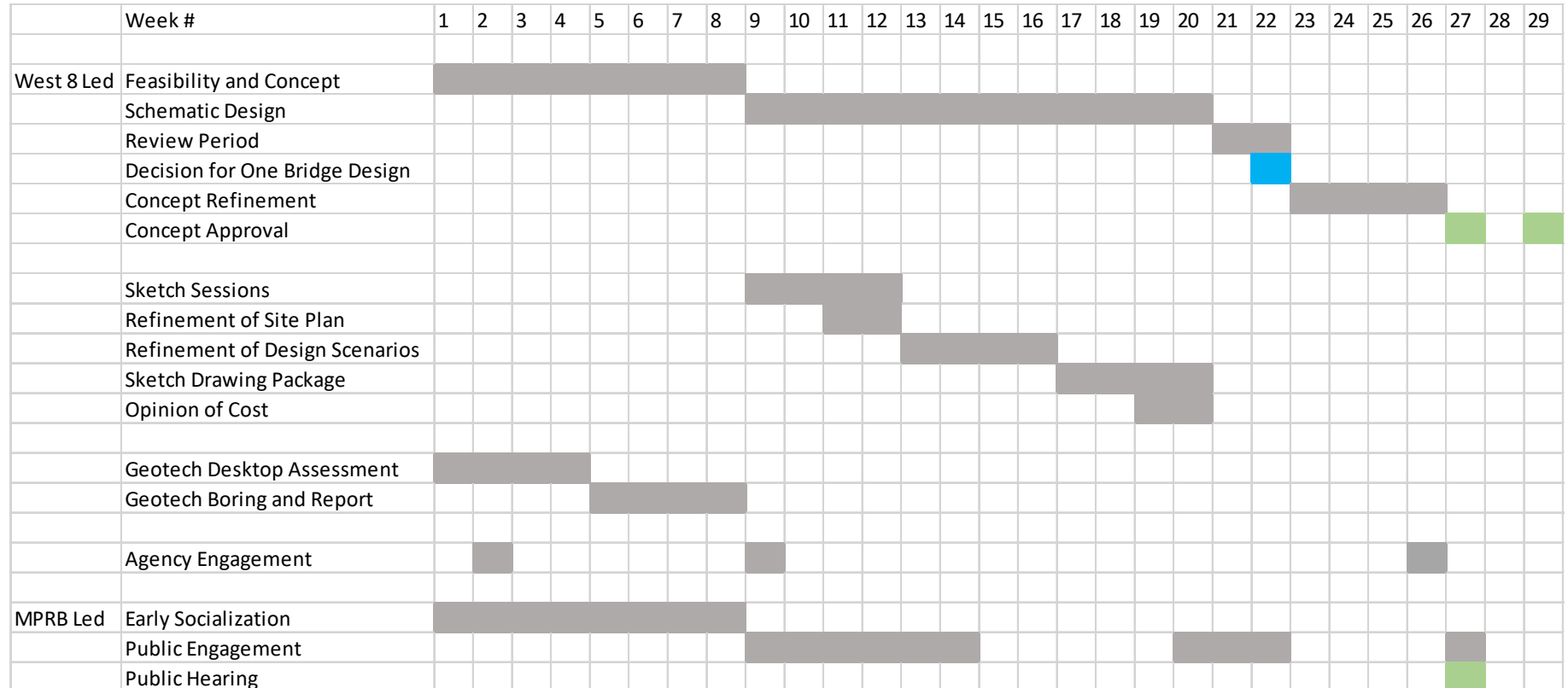
Schedule

Task 1: Feasibility Review and Summary Report, Anticipated Duration 2-3 months

Task 2: Schematic Design, Anticipated Duration 3 months

Task 3: Concept Refinement, Anticipated Duration 4 weeks

Task 4: Engagement Support, Ongoing



About a 30-week project

Agency Engagement

The design team will be talking with several agencies and stakeholders:

- Minneapolis Parks Foundation
- Hennepin County
- City of Minneapolis
- Mississippi Watershed Management Organization
- BNSF Railways
- Continental Cement Company
- Aggregate Industries
- National Park Service
- US Coast Guard
- US Army Corps of Engineers
- MN DNR
- MN SHPO
- MPCA
- Other neighboring businesses



Community Engagement

Groups we've reached out to so far:

- Hawthorn Neighborhood Council
- Northside Residents Redevelopment Council
- Jordan Area Community Council
- Sheridan Neighborhood Organization
- Bottineau Neighborhood Association
- Great Northern Greenway Task Force

Who else should we be talking to?

Are there any events or gatherings we should attend?

Take the Visioning Survey:

www.surveymonkey.com/r/mississippiibridge



Project Contacts

MPRB Project Manager

Tyler Pederson tpederson@minneapolisparks.org

TC^2 Project Manager

Trey Joiner tjoiner@transportationcollaborative.com

Project Webpage:

www.minneapolisparks.org/MississippiBridge

