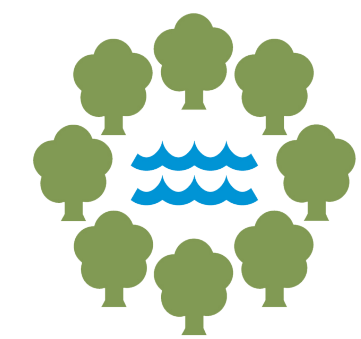


# FOLWELL PARK IMPROVEMENTS

## PHASE II (CURRENT) & FUTURE PHASES

SEPTEMBER 19, 2023 COMMUNITY OPEN HOUSE



**Minneapolis**  
Park & Recreation Board  
[www.minneapolisparke.org](http://www.minneapolisparke.org)

## PLANNING & IMPLEMENTATION WORK DONE TO DATE

In 2019 The Minneapolis Park and Recreation Board (MPRB) adopted the North Service Area Master Plan, including a conceptual master plan for Folwell Park. This master plan was created to:

- set goals for long-term development and improvements at the park, and
- provide a guidebook for general concept-level elements slated as future improvements.

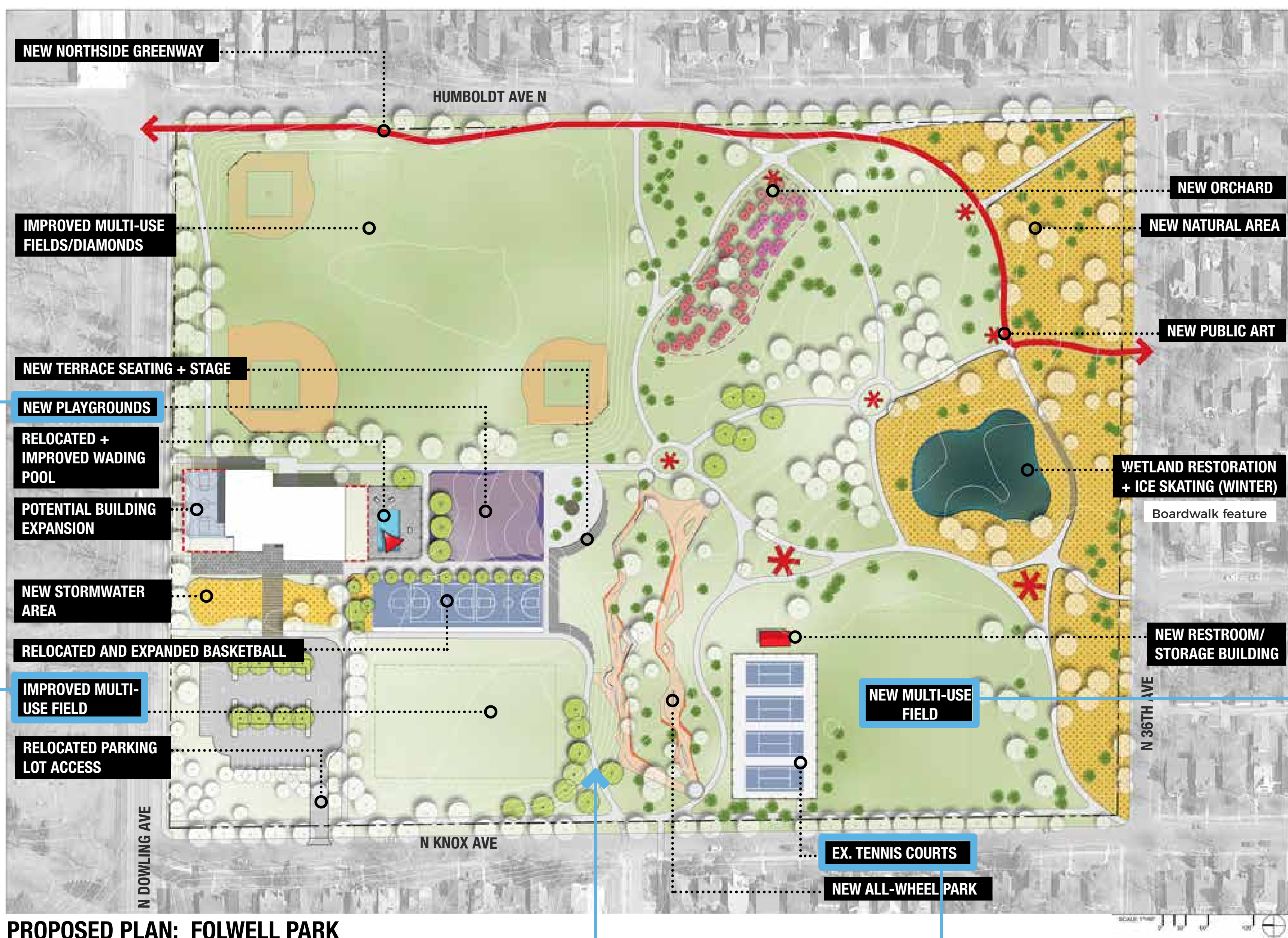
After the adoption of the master plan, **Phase I improvements** were done in Folwell Park that included:

- new multi-use field lighting
- a new ADA pathway from Knox Ave to the playground area
- playground improvements, and
- tennis court improvements.

We are now in **Phase II of improvements** (“Current Phase”) to Folwell Park, and have held several engagement events with the community, including surveys and an open house. Based on feedback from the community, improvements under consideration included:

- a new all-wheel park
- community gathering space and amenity improvements
- stormwater management improvements
- pathway improvements
- other park comfort elements such as lighting & benches.

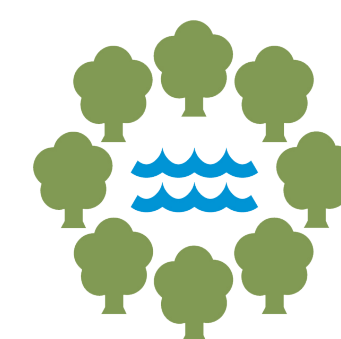
Please visit the various boards and stations here today to discuss the project with the team and provide your valuable input!



# FOLWELL PARK IMPROVEMENTS

## PHASE II (CURRENT) & FUTURE PHASES

SEPTEMBER 19, 2023 COMMUNITY OPEN HOUSE

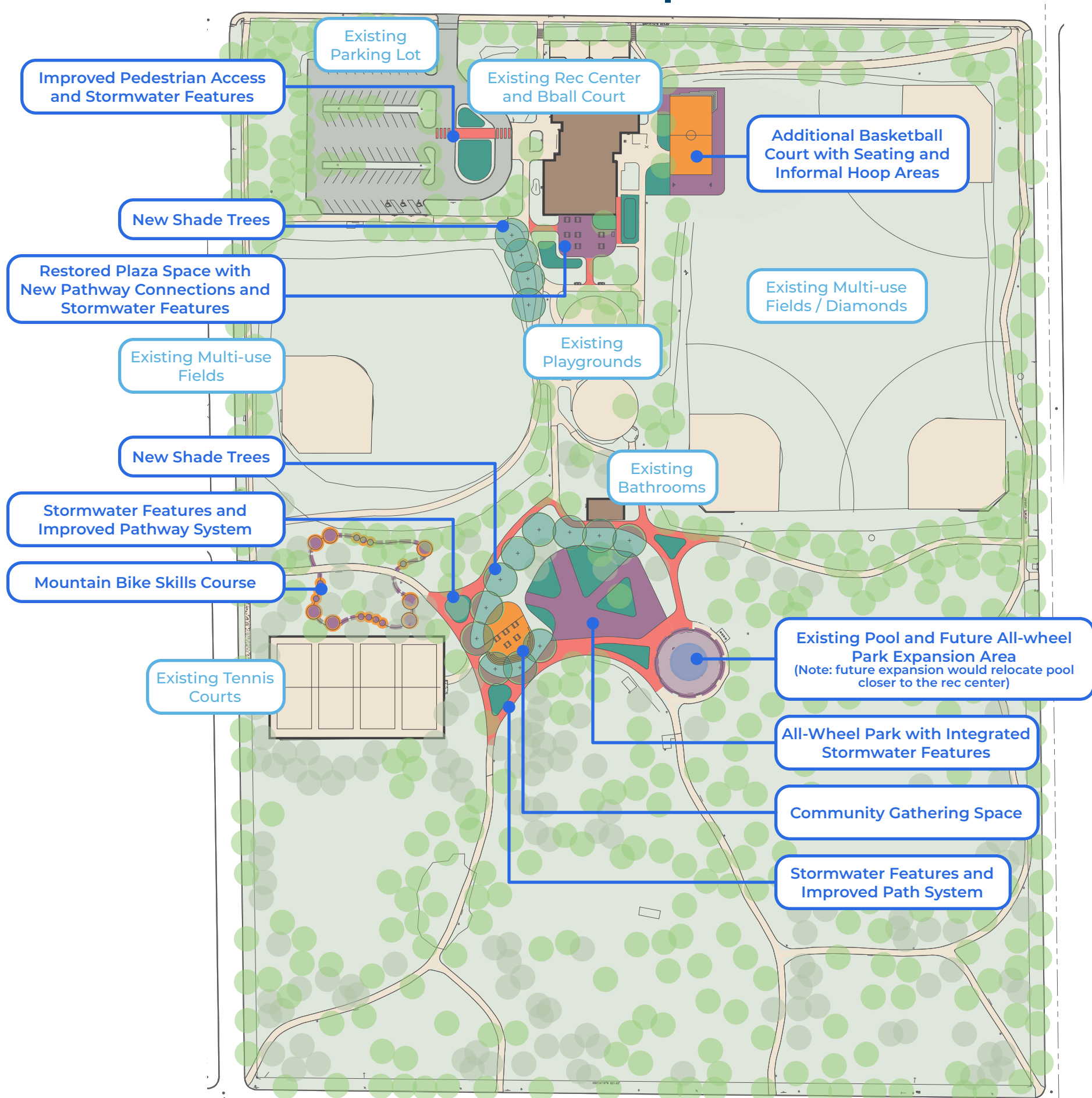


**Minneapolis**  
Park & Recreation Board  
www.minneapolisparcs.org

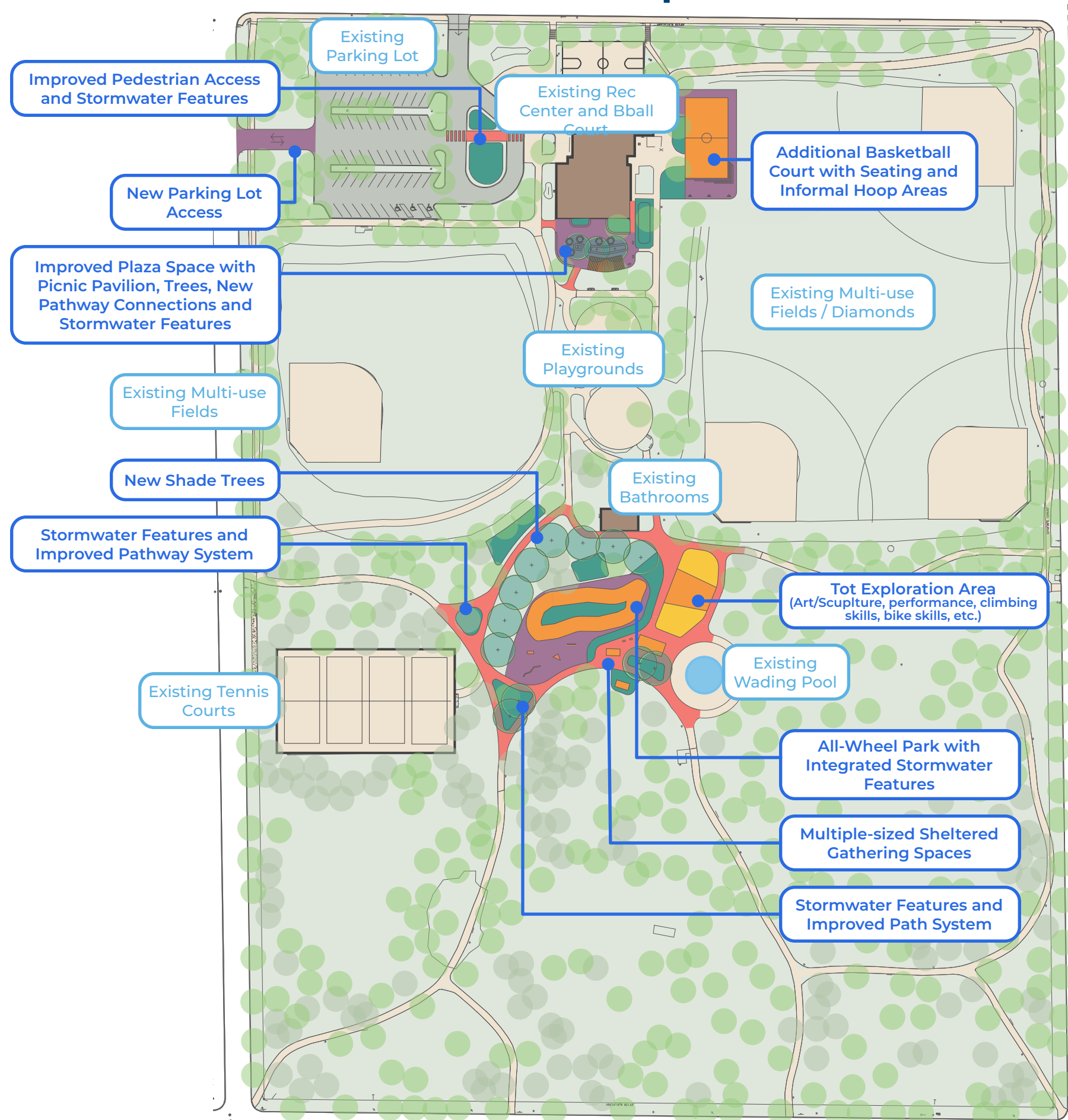
### PREVIOUS ENGAGEMENT SUMMARY: OPEN HOUSE EVENT

A Community Open House was held at Folwell Park on May 25th, 2023 to gain input from the community regarding park improvements. At this event, around 60 participants provided feedback on the preliminary design concept options and all-wheel park design.

**Concept 1**



**Concept 2**



**Concept 1 was the preferred concept.** Community members requested more comfort elements in the park, minor improvements to the plaza space, and an additional gathering space near the all-wheel park. Amenities like the mountain bike skills course and a shade structure at the wading pool received community support.

Concept 2 is similar to concept 1, but proposed variations in style and variety of community gathering areas. The community voiced no desire in altering the parking lot entrances and did not have a strong desire to renovate the existing plaza beyond minor updates to tables, grills, improved connections, and resurfacing.



Community members discussing the two design concepts for the next phases of Folwell Park improvements



Community members enjoying park amenities during the Folwell Park Open House event.

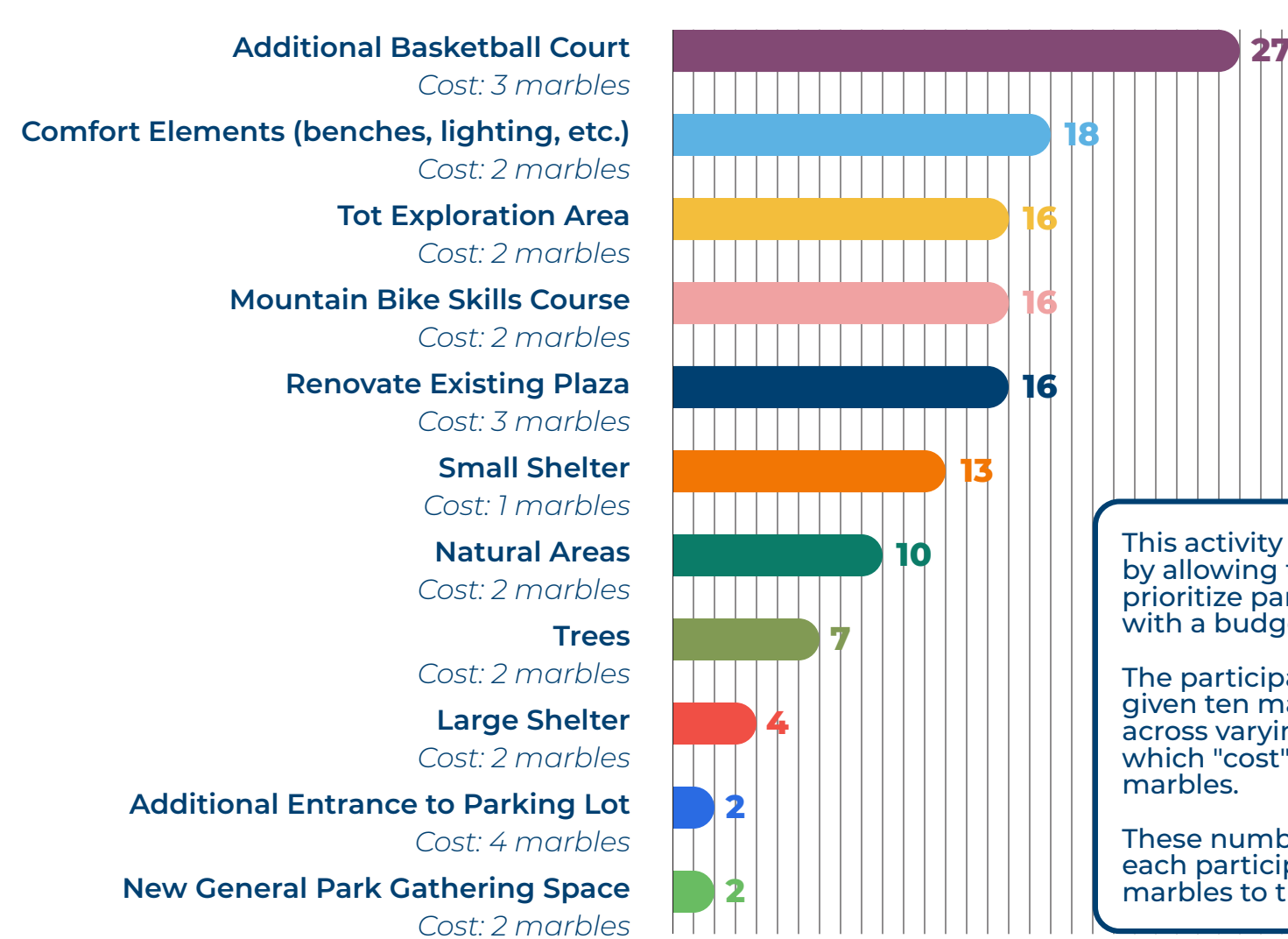


Staff and community members discussing the next phases of the project and budgeting park improvements using marbles.

Engagement outcomes example: What other features can be added to Folwell Park to improve how it serves the community? (Choose your top 3)



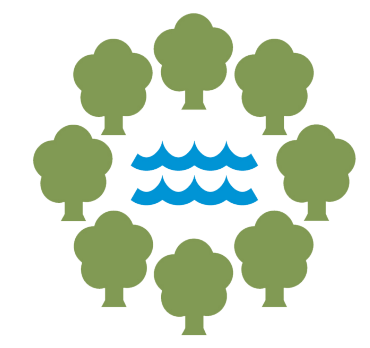
Engagement outcomes example: Budgeting with marbles; allocating funds for park amenities (Beyond the all-wheel park)



This activity provided insight by allowing the community to prioritize park improvements with a budget in mind. The participants were each given ten marbles to allocate across varying park features, which "cost" between 1 and 4 marbles. These numbers represent each participant that allocated marbles to that category.

# FOLWELL PARK IMPROVEMENTS

## PHASE II (CURRENT) & FUTURE PHASES



**Minneapolis**  
Park & Recreation Board  
www.minneapolisparke.org

9/22/23

### PREVIOUS ENGAGEMENT SUMMARY: ONLINE SURVEY & STAKEHOLDER MEETING

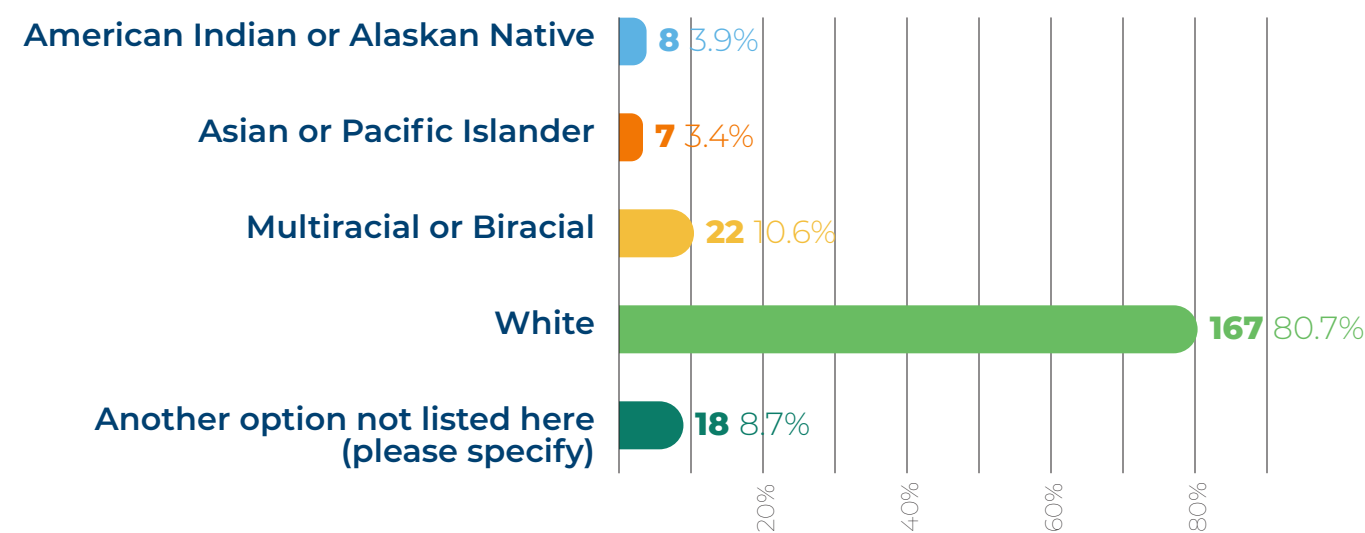
An online community-wide survey was available from April 17th to May 9th, and provided insight into where community preferences were trending for park improvements being considered for this phase of Folwell Park improvements implementation. 216 community members participated in the survey. Below is a glimpse of input gathered from the survey:

In which zip code do you live?

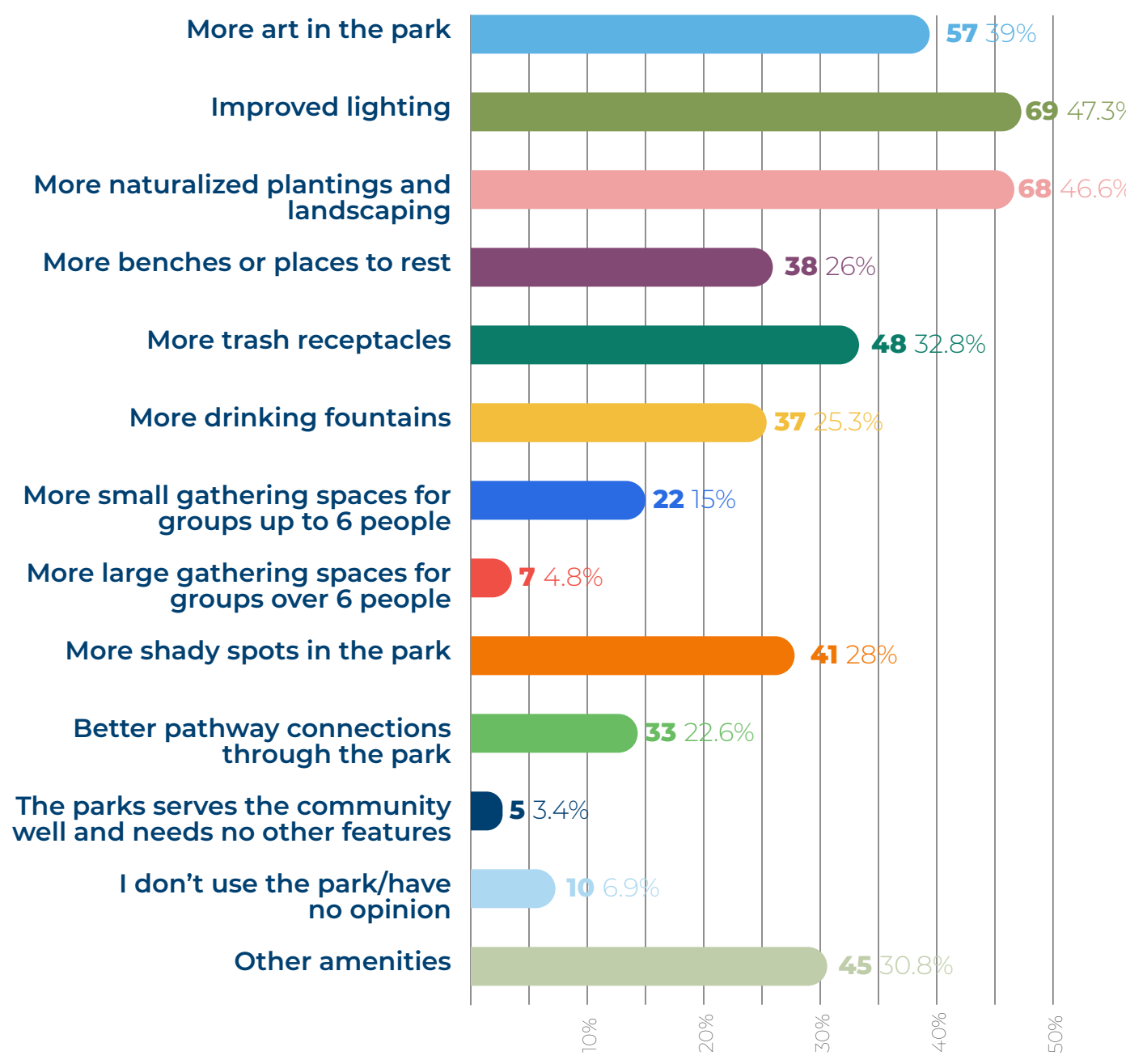


81.7% of those surveyed are home owners, 14.4% of those surveyed rent.

Which of the following best describe you? (Select all that apply)

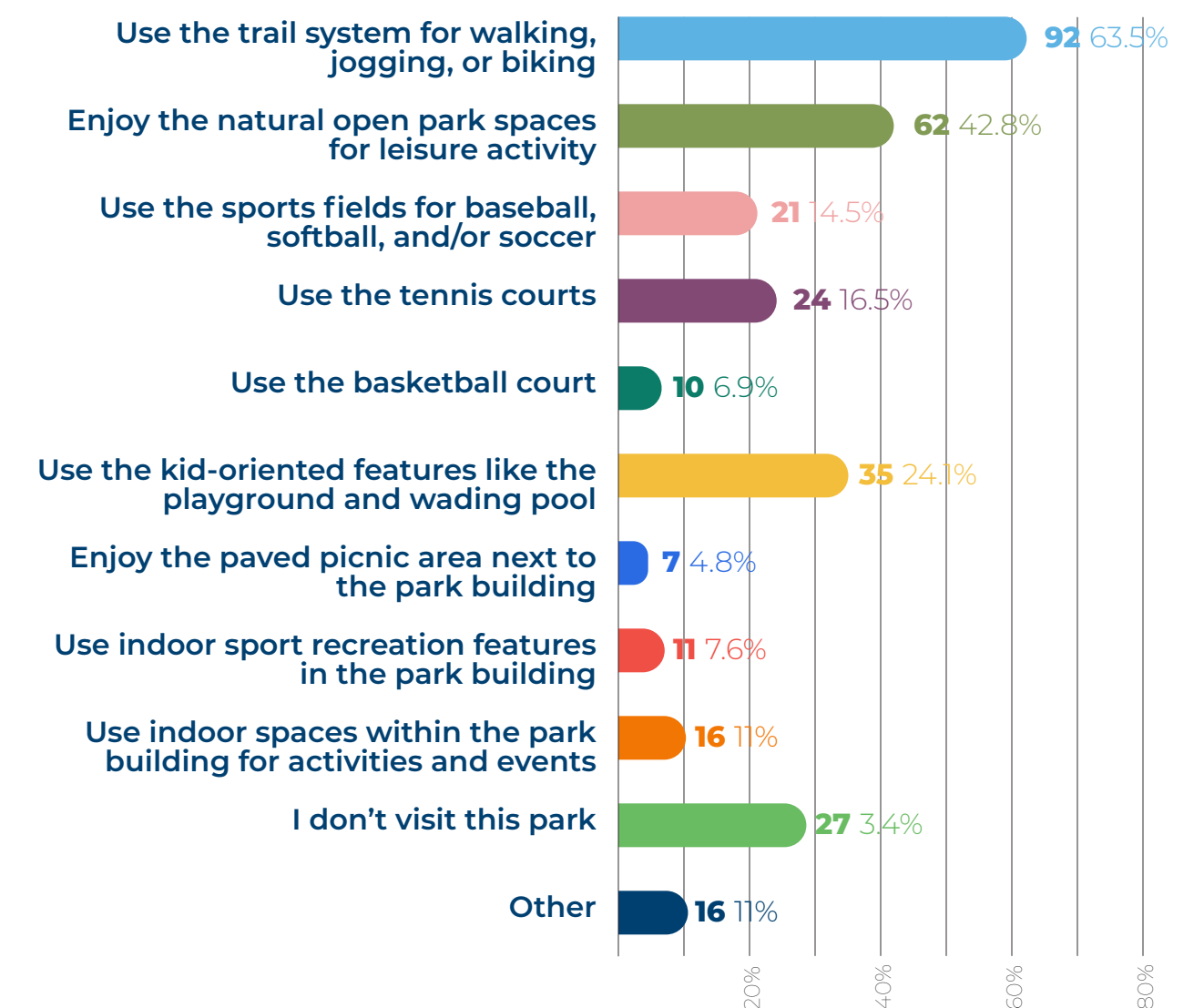


What other features can be added to Folwell Park to improve how it serves the community? (Answered: 146)



More comfort elements, art, naturalized plantings, and better path connectivity were ranked the most important features needed.

When you visit Folwell Park, what do you do when you are there? (Select all that apply) (Answered: 145)



16.67% of respondents (22 individuals) would like to see improvements regarding accessibility. 6% (8) would like to see significant accessible upgrades.

Results related to the all-wheel park:

76.9% (113 individuals) are in support of the all-wheel park.

56.4% of respondents (44) ride bikes, 30.8% (24) skateboard, 11.5% (9) rollerblade/rollerskate, and 3.9% (3) ride scooters

61% (47) of respondents prefer a spaced-out design that segregates zones, rather than a multi-directional design with a mixed layout

The top 5 desired transitional features were: Hips, mini ramps, pump bumps, rollers, and box/ski jumps

The top 5 desired street features were: banks, skatable/bikeable art, quarter pipes, mini ramps, and rail/manual pad/ledge combinations

A project stakeholder workshop took place on May 16th and included representatives from the Loppet Foundation, the Folwell Neighborhood Association, Camden Cycles, and MPRB staff. Below is input on the project gathered during that meeting:

What community-based improvement opportunities do you see for this phase of implementation?



What challenges do you see within the park that you would like improvements to address?



How would you rank these park improvement opportunities based on project scope and general costs?

- 1st - Outdoor picnic area/community gathering improvements (\$200,000)
- 2nd - Additional outdoor basketball court (\$150,000)
- 3rd - Another idea
- 4th - Parking lot improvements (\$150,000)

What size/scale of community gathering is needed in the park, if any?

Flexible, for various groups

What types of community gathering is needed in this park, if any?

Open space gathering

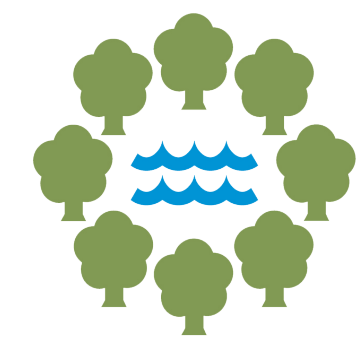
What features can be improved in the park to better serve the community? (Top 3)

- Art in the park
- Improved lighting
- Improved pathways/circulation

# FOLWELL PARK IMPROVEMENTS

## PHASE II (CURRENT) & FUTURE PHASES

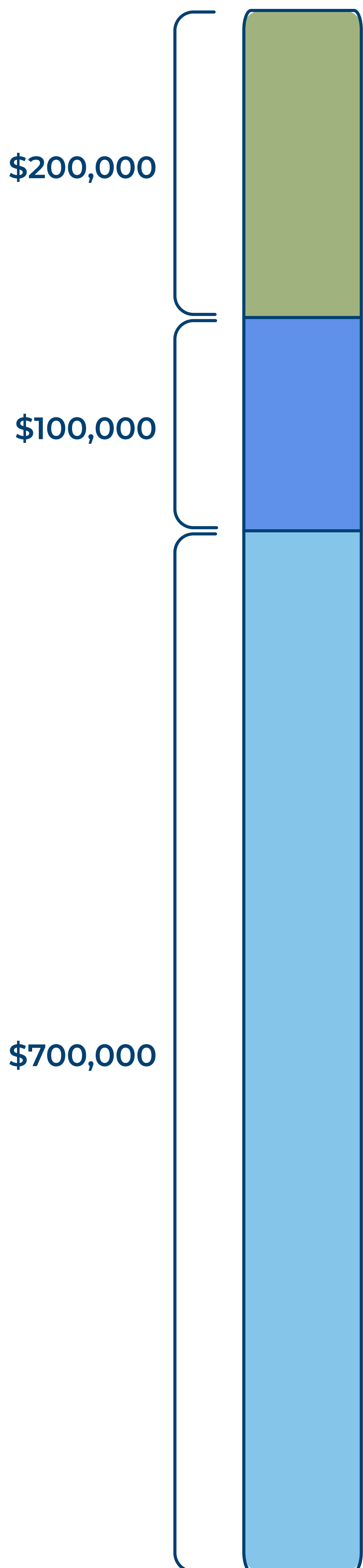
SEPTEMBER 19, 2023 COMMUNITY OPEN HOUSE



**Minneapolis**  
Park & Recreation Board  
[www.minneapolisparcs.org](http://www.minneapolisparcs.org)

### PROJECT FUNDING & BUDGETING

Funding is the primary factor in deciding which amenities are able to be included in this phase of implementation at Folwell Park. Out of the overall project budget\* of \$1 million, here is how the funding is being allocated based on community input and construction costs:

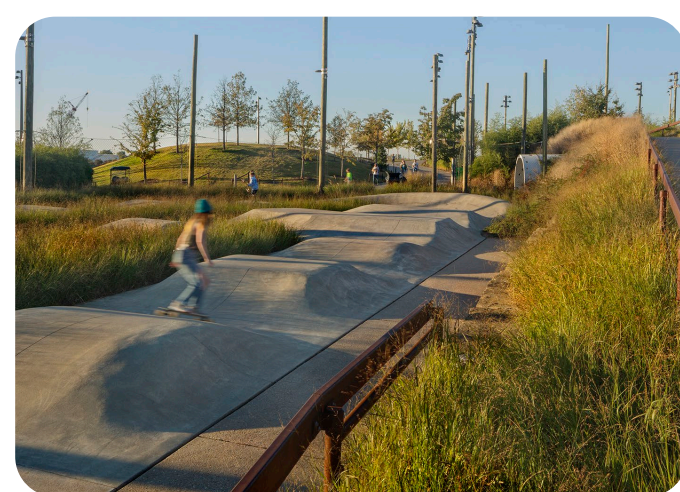


#### COMMUNITY-BASED AMENITIES



- Benches
- Picnic tables & Grill
- Safety lighting
- Pathway improvements

#### STORMWATER AND PLANTINGS



The stormwater features are not only a regulatory requirement as part of the hardscape improvements proposed in the park, but will add to the planted areas that feature native and naturalized plantings to the park space.

#### ALL-WHEEL PARK



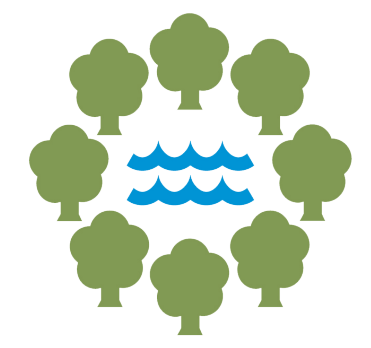
The all-wheel park is a priority in this phase of improvements and is being partially funded by a grant. The all-wheel park will feature skill areas that cater to all types of wheeled ways to have fun - skateboards, scooters, skates, wheelchairs, etc. and will be implemented to this design as budget allows.

\*The total budget for this project phase of Folwell Park Improvements is \$1.34 million. This funds staff and consultant time, community engagement, design and engineering phases, and construction.

# FOLWELL PARK IMPROVEMENTS

## PHASE II (CURRENT) & FUTURE PHASES

SEPTEMBER 19, 2023 COMMUNITY OPEN HOUSE



**Minneapolis**  
Park & Recreation Board  
[www.minneapolisparke.org](http://www.minneapolisparke.org)

### ALL-WHEEL PARK DESIGN CONCEPT- DRAFT



- | As Budget Allows (Potential Future Phase) |                        |
|---|------------------------|
| 1   | Quarter Pipe           |
| 2   | Ledges/Manual Pads     |
| 3   | Flat Rail & Manual Pad |
| 4   | A-Frame Banks          |
| 5   | Down Rail & Step Up    |
| 6   | Hubba & Bump to Ledge  |
| 7   | Curved Bank to Ledge   |
| 8   | Banked Hip             |
| 9   | Bank to Curb           |
- 
- | Current Phase Priority Portion |                                   |
|--------------------------------|-----------------------------------|
| 10                             | Clamshell Pocket                  |
| 11                             | Rolled Volcano Hip                |
| 12                             | Mini Ramp                         |
| 13                             | Snake Run                         |
| 14                             | Pump Bump                         |
| 15                             | Seat Ledges                       |
| 16                             | Quarter Pipes                     |
| 17                             | Flow Bowl (6.5' Deep, 4' Shallow) |
| 18                             | Love Seat Hip                     |
| 19                             | Seat Ledges                       |

Plan View Rendering of the All-wheel Park



Perspective view of the snake run from the northeast.



Perspective view from above, showing snake run and bowls from the southeast.



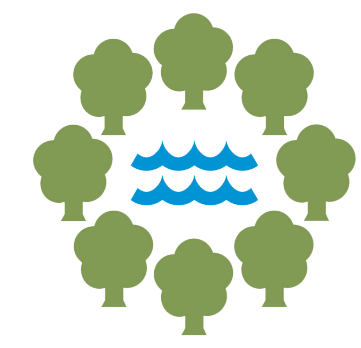
Perspective view of the bowl, featuring the quarter pipe and pump bump, with the rest of the all-wheel park beyond.



Perspective of the bowl, featuring the pump bump and quarter pipes.

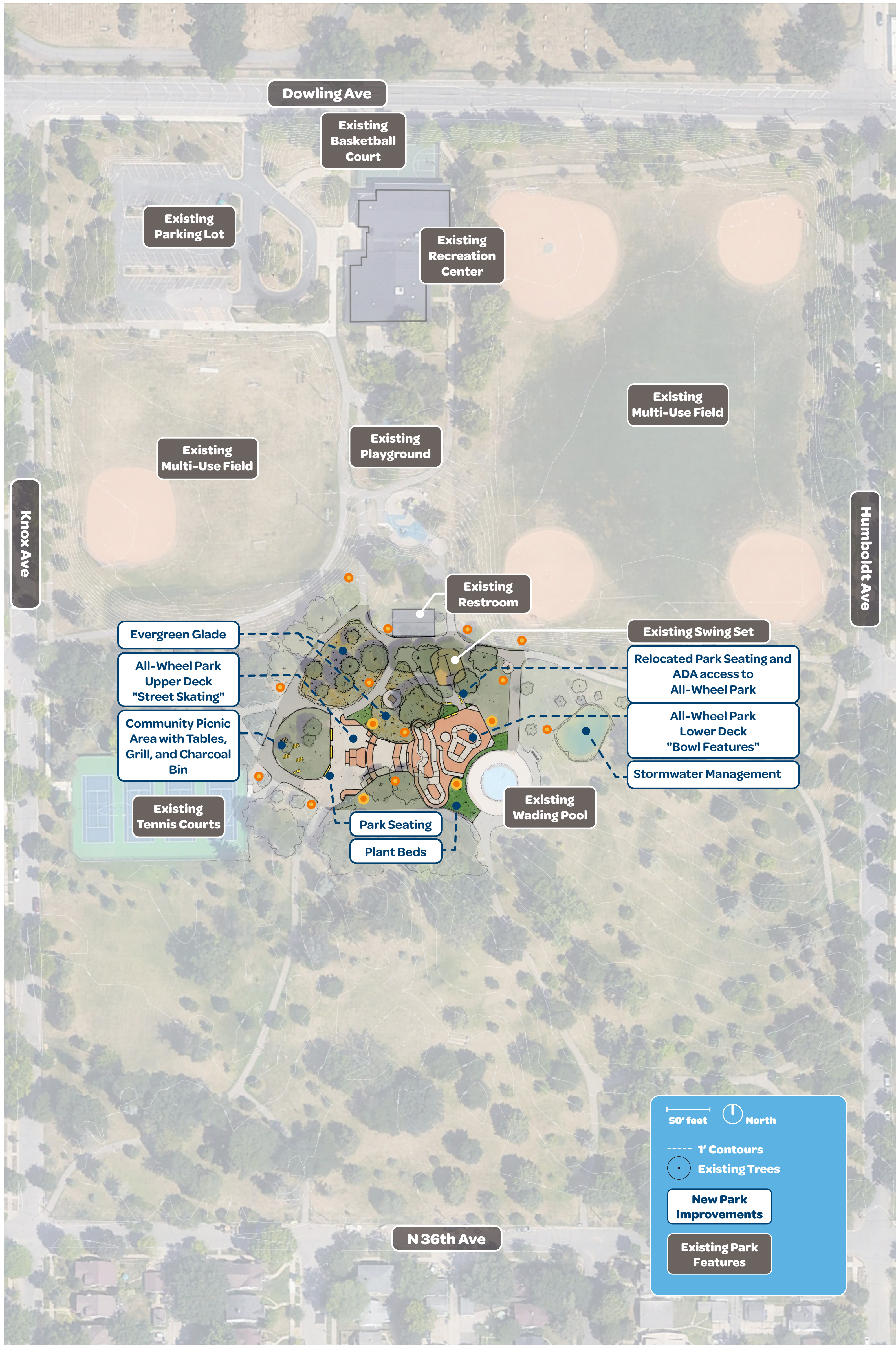
# FOLWELL PARK IMPROVEMENTS PHASE II (CURRENT) & FUTURE PHASES

SEPTEMBER 19, 2023 COMMUNITY OPEN HOUSE



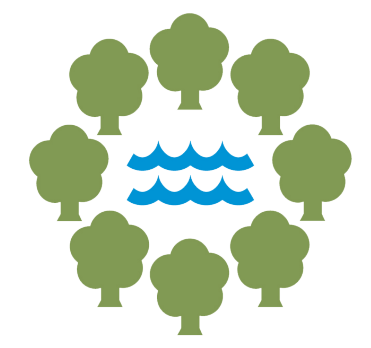
**Minneapolis**  
Park & Recreation Board  
[www.minneapolisparcs.org](http://www.minneapolisparcs.org)

## PREFERRED CONCEPT PLAN - DRAFT



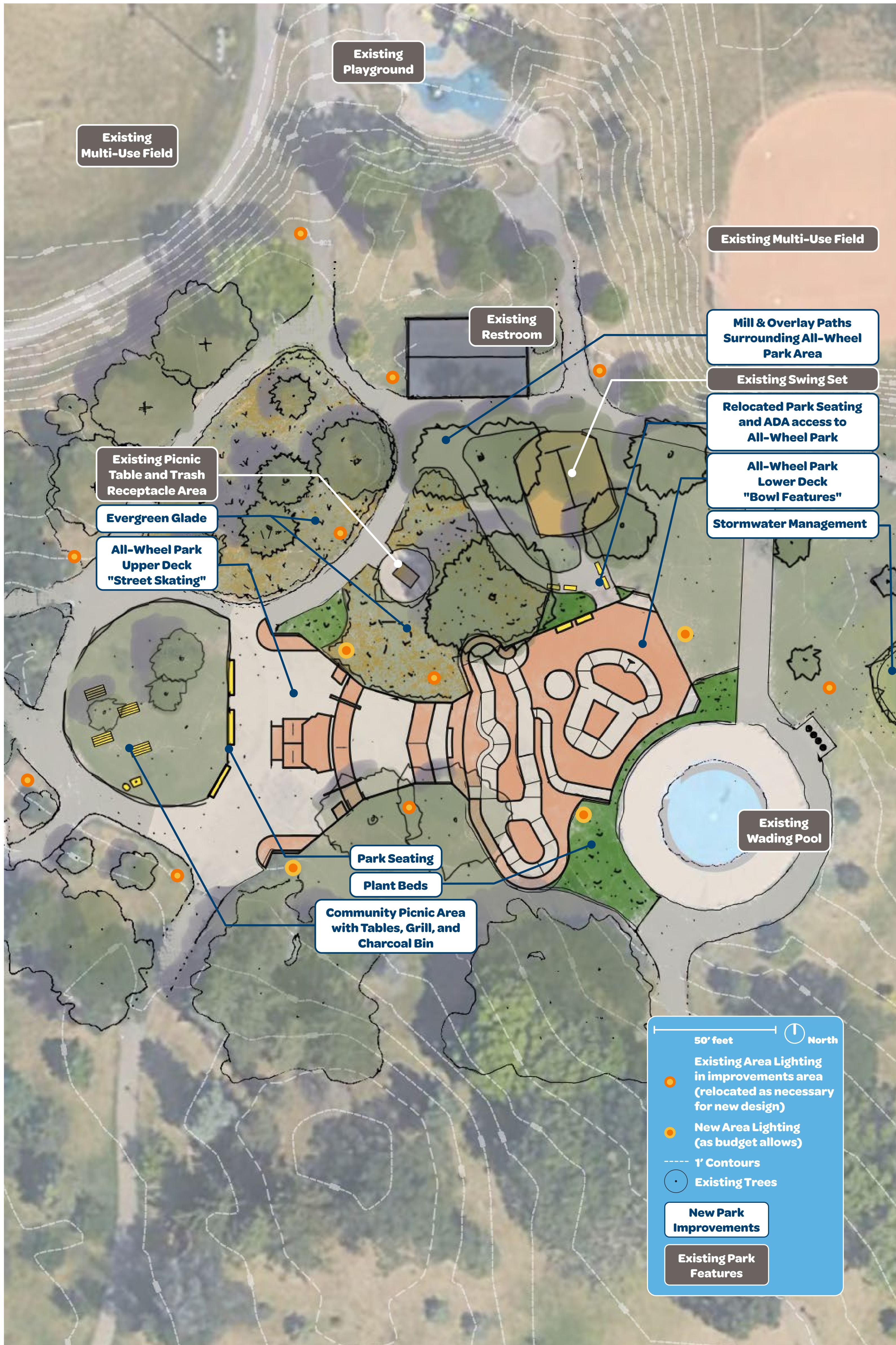
# FOLWELL PARK IMPROVEMENTS PHASE II (CURRENT) & FUTURE PHASES

SEPTEMBER 19, 2023 COMMUNITY OPEN HOUSE



**Minneapolis**  
Park & Recreation Board  
[www.minneapolisparke.org](http://www.minneapolisparke.org)

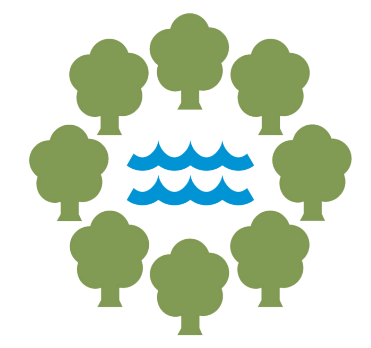
## PREFERRED CONCEPT PLAN - DRAFT



# FOLWELL PARK IMPROVEMENTS

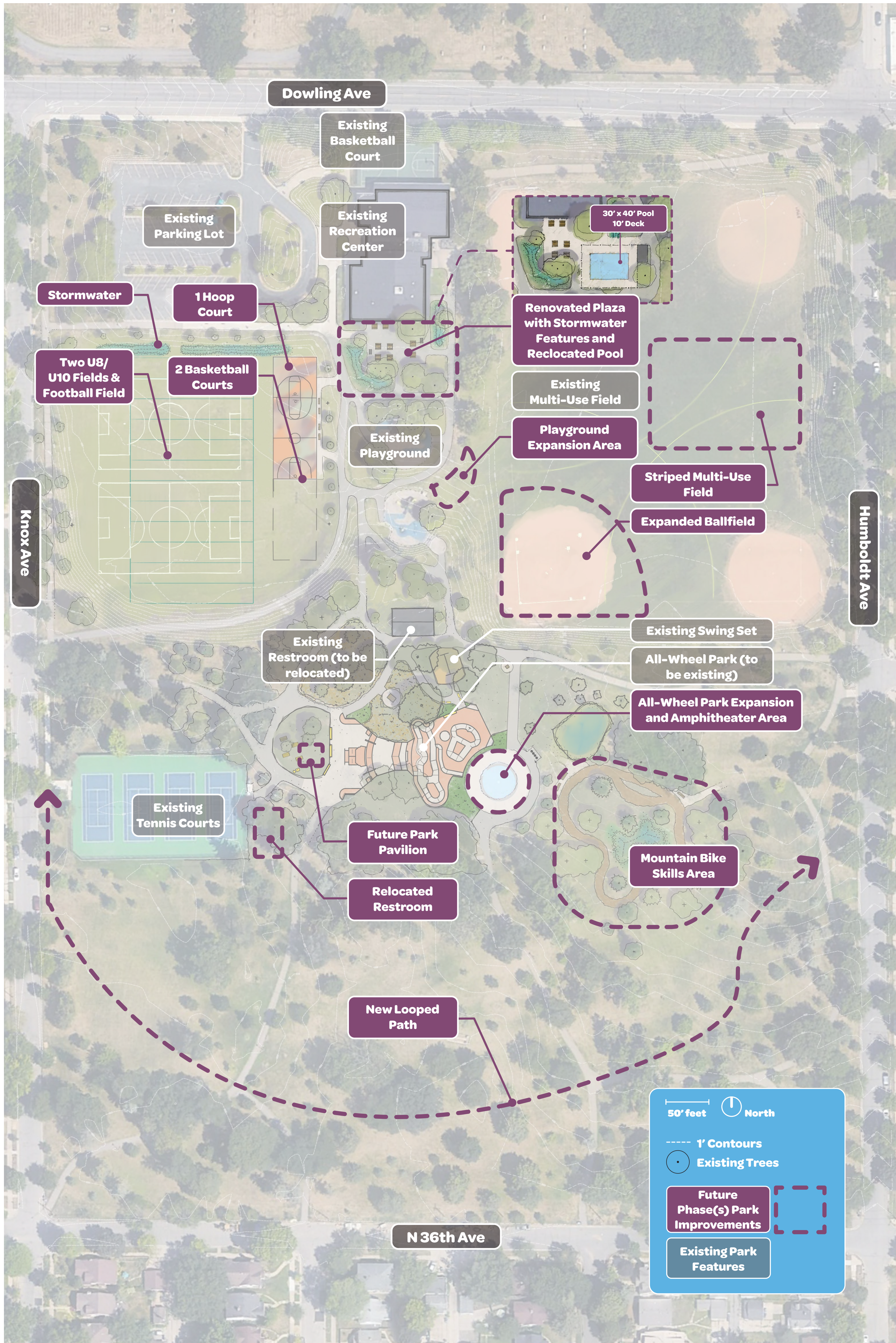
## PHASE II (CURRENT) & FUTURE PHASES

SEPTEMBER 19, 2023 COMMUNITY OPEN HOUSE



**Minneapolis**  
Park & Recreation Board  
[www.minneapolisparke.org](http://www.minneapolisparke.org)

### FUTURE DESIGN PHASES

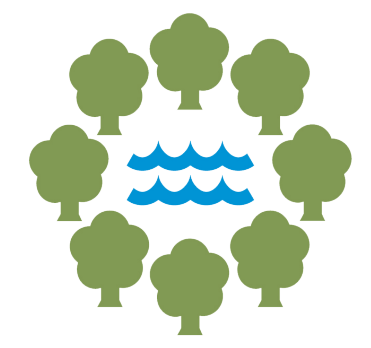


This plan represents other amenities and improvement opportunities that were explored as potential scope for this Phase II improvements during this scoping process throughout the spring and summer 2023. These improvements will be implemented in a future phase as funding allows. This plan however does not reflect the full design as part of the North Service Area Master Plan for the Park approved in 2019.

# FOLWELL PARK IMPROVEMENTS

## PHASE II (CURRENT) & FUTURE PHASES

SEPTEMBER 19, 2023 COMMUNITY OPEN HOUSE



**Minneapolis**  
Park & Recreation Board  
[www.minneapolisparcs.org](http://www.minneapolisparcs.org)

### HAVE ANY FURTHER COMMENTS?

Share any feedback below using a post-it note. Thank you!

A large rectangular area defined by a dashed yellow border, intended for users to write their feedback. The text "INPUT HERE!" is centered within this area.

**INPUT HERE!**