

WHITTIER PARK

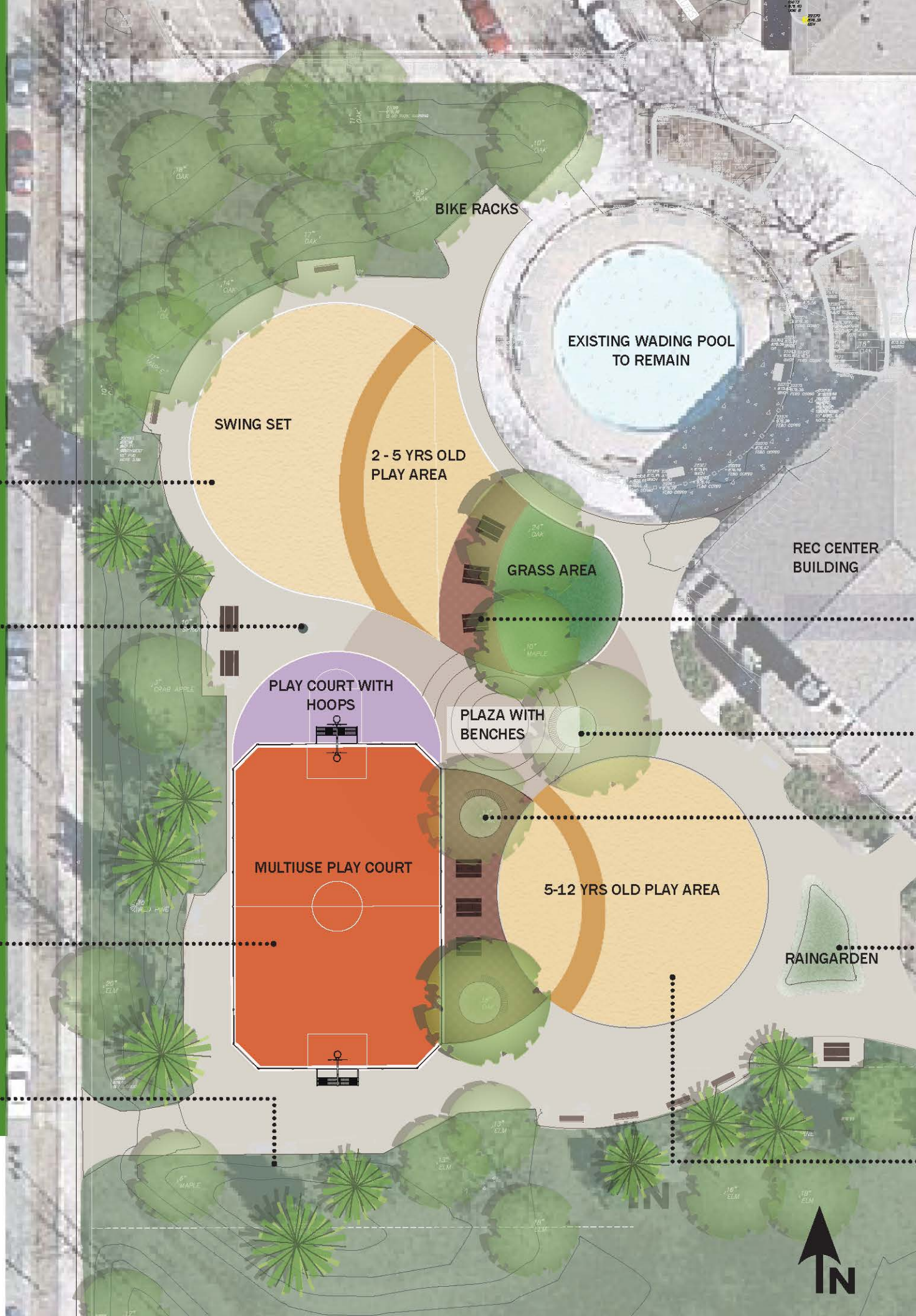
PLAY AREA IMPROVEMENTS



DRINKING FOUNTAIN



BIKE RACKS



THE PROPOSED DESIGN IMPROVES THE FLOW AND SIGHTLINES BETWEEN BOTH PLAY CONTAINERS FOR BETTER ACCESS, PEDESTRIAN CIRCULATION AND VISUAL CONNECTION. A SMALL GATHERING PLAZA WITH BENCHES OPENS THE MIDDLE OF THE PLAY AREA TO TAKE ADVANTAGE OF THE EXISTING LARGE TREES SHADE AND PROVIDES A TRANSITIONAL SPACE FOR RESTING.

THE EXISTING 2-5YRS OLD PLAY AREA CONTAINER WILL EXPAND FOR THE ADDITION OF A LARGER SWING SET. THE 5-12 YRS OLD PLAY CONTAINER WILL REMAIN THE SAME SIZE WITH NEW AND MORE PLAY ELEMENTS.

A NEW MULTIUSE COURT WILL REPLACE THE EXISTING TWO-HALF BASKETBALL AREA. THIS FENCED COURT WILL PROVIDE A SPACE TO PLAY FUTSAL, BASKETBALL, AND VARIOUS ACTIVITIES THAT CAN USE A HARD SURFACE AREA. A THIRD HOOP FOR ADDITIONAL PLAY IS LOCATED OUTSIDE THE FENCE.

OTHER SITE IMPROVEMENTS INCLUDE THE ADDITION OF PEDESTRIAN LIGHTS, PICNIC TABLES, BENCHES, BIKE RACKS, STORMWATER MANAGEMENT AND WALKING PATHS.

PICNIC TABLES UNDER TREES SHADE



CONCEPT PLAN