

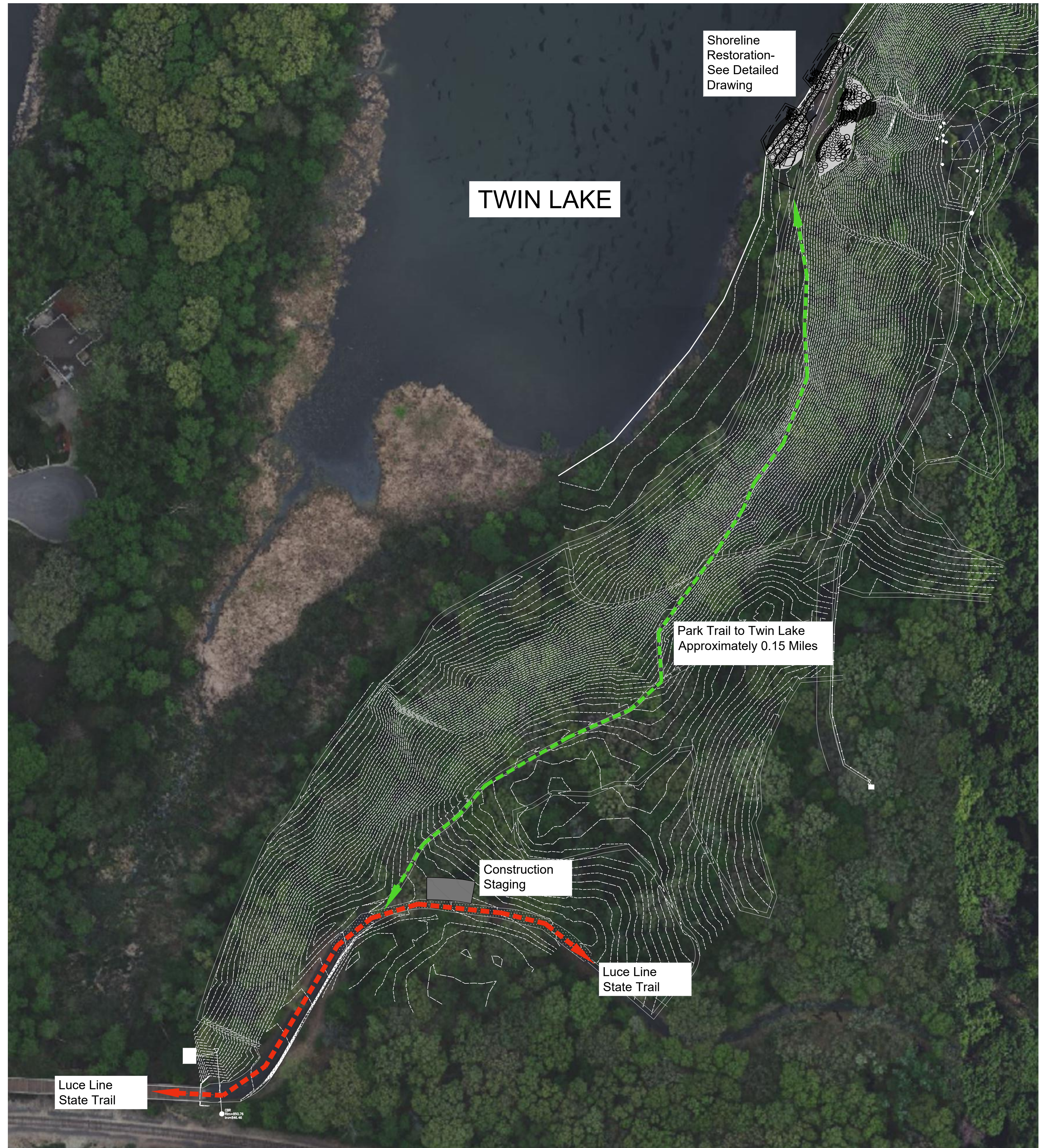
SITE CONTEXT

NOT TO SCALE-SOURCED FROM HENNEPIN COUNTY NATURAL RESOURCES



EXISTING CONDITIONS

NOT TO SCALE-SOURCED FROM HENNEPIN COUNTY NATURAL RESOURCES



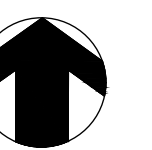
Minneapolis Park & Recreation Board
 2117 West River Road
 Minneapolis, Minnesota 55411-2227
 612.230.6400
 (fax) 612.230.6586

STUDIO GRO

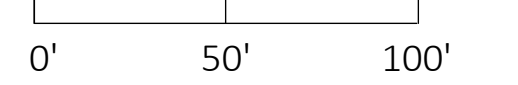
LANDSCAPE ARCHITECTURE
 PO BOX 16169
 MINNEAPOLIS, MN 55416
 SARAH@STUDIOGRO.COM
 WWW.STUDIOGRO.COM
 612.642.1992

Minneapolis Park & Recreation Board
 Twin Lake Shoreline Stabilization

Address: 1131 Theodore Wirth Parkway, Golden Valley, MN
 P.I.D. 19039241.20001



Printed at 22 x 34
 scale 1" = 20'





MATCH EXISTING VEGETATION-
SHRUB SHORELINE AND EMERGENT PLANT MATERIAL



BOULDER SLABS AT WATER AND PORTIONS
OF UPLAND WALL



COMBINATION BOULDER WALL AND
BOULDER SLABS AT UPLAND WALL

LEGEND

- | | |
|----------------------------------------------------------------------------------|--------------------------------------------------------------------|
| <i>Ostrya virginiana</i> - Hop Hornbeam | Shoreline Habitat |
| <i>Aronia melanocarpa</i> - Black Chokeberry | Temporary Plant Protection Fence (5-Year) |
| <i>Cephalanthus occidentalis</i> - Buttonbush | Coir Log per MNDOT 2577 SOIL BIOENGINEERED SYSTEMS |
| <i>Cornus sericea</i> - Red Twig Dogwood | Temporary Floating Silt Fence |
| <i>Diervilla lonicera</i> - Bush Honeysuckle | Stone Type A: Granite Boulder STEPS Access at Water/Wall at Upland |
| <i>Rhus aromatica</i> - Fragrant sumac | Stone Type B: 24" Granite Boulders Edging Toe of Slope |
| <i>Ribes americanum</i> - American Black Currant | |
| <i>Salix humilis microphyllus</i> - Prairie Willow | |
| <i>Sambucus canadensis</i> - American Elder | |
| ~3,400 SF Compost Top Dressing, ECB and Seed Mix | |
| ~370 SF ECB and 4" Mulch - Mulch shall be undyed, double-shredded hardwood mulch | |
| ~320 SFEmergent Plant Zone | |

PLANT LIST

TREES						
Qty	Scientific Name	Common Name	Height	Width	Container Size	
4	<i>Ostrya virginiana</i>	Hop Hornbeam	20'	15'	#10 Container	

UPLAND SHRUBS							
Qty	Scientific Name	Common Name	Flower Color	Bloom Time	Height	Width	Container Size
12	<i>Aronia melanocarpa</i>	Black Chokeberry	White	M, J, J	5'	5'	#2 Container
7	<i>Cephalanthus occidentalis</i>	Buttonbush	White	J, J, A	6-12'	6-12'	#2 Container
5	<i>Cornus sericea</i>	Red Twig Dogwood	White	M, J, J, A	6-12'	6-12'	#2 Container
37	<i>Diervilla lonicera</i>	Bush Honeysuckle	yellow	J, J	2-3'	2-4'	#2 Container
7	<i>Rhus aromatica</i>	Fragrant Sumac	Yellow	M	5'-6'	6'-8'	#2 Container
25	<i>Ribes americanum</i>	American Black Currant	Cream	J, J, A	3'-6'	3'-6'	#2 Container
9	<i>Salix humilis microphyllus</i>	Prairie Willow	Yellow/Green/Purple	M, A, M	3'-6'	3'-6'	#2 Container
3	<i>Sambucus canadensis</i>	Elderberry	White	A, S	8'-10'	8'-10'	#2 Container

EMERGENT PLUGS							
Qty	Scientific Name	Common Name	Flower Color	Bloom Time	Height	Width	Container Size
12	<i>Acorus americanus</i>	Sweet Flag	Green	M, J, J	2	1.5'	Plug
12	<i>Eleocharis obtusa</i>	Blunt Spike Rush	Green	J, J, A, S, O	1'	1.5'	Plug
12	<i>Pontederia cordata</i>	Pickereel Weed	Purple	J, J, A	3'	1-2'	Plug
12	<i>Sagittaria latifolia</i>	Arrowhead	White	J, A, S	3'	2'	Plug
12	<i>Scirpus atrovirens</i>	Dark-Green Bulrush	Green	J, J, A	5'	1-3'	Plug
12	<i>Scirpus purpureus</i>	Chairmaker's Rush	Green	J, J, A, S, O	4'	2-3'	Plug
12	<i>Scirpus validus</i>	Softstem Bulrush	Green	J, J, A	6'	1-4'	Plug
12	<i>Sparganium eurycarpum</i>	Bur-reed	White	J, J, A	3'	3'	Plug

SEED MIX				
Scientific Name	Common Name	Flower Color	Bloom Time	Total PLS Lbs
<i>Carex blanda</i>	Eastern Woodland Sedge	Green	M, J	0.08
<i>Carex brevior</i>	Plains Oval Sedge	Green	A, M, J	0.15
<i>Carex molesta</i>	Troublesome Sedge	Green	A, M, J	0.15
<i>Carex radiata</i>	Eastern Star Sedge	Green	M, J, J	0.05
<i>Carex sprengei</i>	Long-beaked Sedge	Green	J	0.2
<i>Juncus tenuis</i>	Path Rush	Green	J, J, A, S	0.02

Add rice hulls and oats for spreading and erosion control during establishment, per supplier's recommended rates

SECTION

