

MINNEAPOLIS TREE ADVISORY COMMISSION
Meeting of January 20, 2022
Held remotely via Zoom
Decision/Consensus/Assignment items are set out in bold.

**COMMISSION MEMBERS ARE RESPECTFULLY REQUESTED TO REVIEW THESE MINUTES CAREFULLY
FOR ASSIGNMENT AND ACTION ITEMS PERTAINING TO THEM**

The Meeting of the Minneapolis Tree Advisory Commission (MTAC) of the Minneapolis Park and Recreation Board (MPRB) convened at 5:30 p.m. on December 16, 2021, with the following Commission Members in attendance: Chair Peggy Booth, Steve Nicholson (MN Shade Tree Committee), Co-Chair Peter MacDonagh (U of M), Carol Sersland, Susan Olmsted, Giuseppe Marrari, Tim Keane, Steve Collin (Public Works), Don Willeke (Mayor's Representative), Ralph Sievert (MPRB Forestry Director), Curt Hartog (School Board Representative).

Not in attendance: MPRB Commissioner Steffanie Musich

Guests in attendance: Philip Potyondy (MPRB Sustainable Forestry Coordinator), Allison Bell (Green Infrastructure Coordinator for the Minneapolis Public Works), Mike Kennedy (Public Works), Emma Pachuta (MPRB Senior Planner).

The MTAC meeting minutes for December 16, 2021, were approved.

MTAC MEMBER INTRODUCTIONS

Chair Booth called the meeting to order. The Board members provided a bit of background for the new members, and the new members introduced themselves. Curt Hartog joined the Commission for the first time as the School Board representative. Hartog is executive director for capital planning, construction, and maintenance for Minneapolis; he noted that 400 trees on school properties will need to be replaced with a 5 to 7 year replanting plan. Tim Keane is the new member representing Park Board Districts 4 and 6; he is a lifelong resident of Minneapolis, has been a city planner and is a real estate attorney.

MINNEAPOLIS PUBLIC WORKS DEPARTMENT'S GREEN INFRASTRUCTURE (GI) PROGRAM

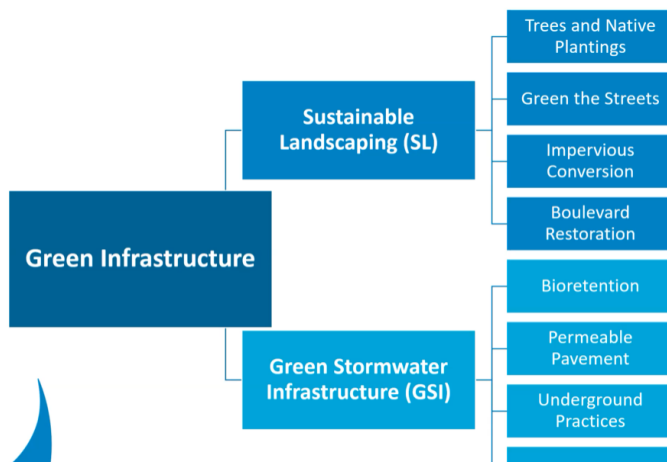
MacDonagh introduced Allison Bell from Minneapolis Public Works. She incorporates green infrastructure into transportation projects as part of the transportation and planning programming and surface waters in the Sewers Division. Last year the MTAC had an excellent presentation by her colleague, Elizabeth Stout.

Overview and highlights from the presentation:

- I. GI Program
- II. GI and Tree Opportunities
- III. Challenges and Initiatives
- IV. Questions

Green infrastructure incorporates storm water treatment that mimics natural hydrology. The Program started in 2019. Transportation planners and staff in surface water and sewer evaluate how GI would be incorporated into a proposed project. Stormwater ordinance went into effect 20 days ago and provides an additional regulatory push.

Requiring green infrastructure include the goals of reducing urban heat island impact, increasing tree canopy, reducing storm water quality issues and volume issues, and addressing climate change in a more resilient and holistic way.



GSI = it's purposely engineered to capture stormwater from the road or some development and treating it or trying to get it back into the ground where it would have gone before.

SL = Sustainable landscaping are non-engineered stormwater management approaches, including planting trees and/or native plants (instead of sod) and reducing impervious surface.

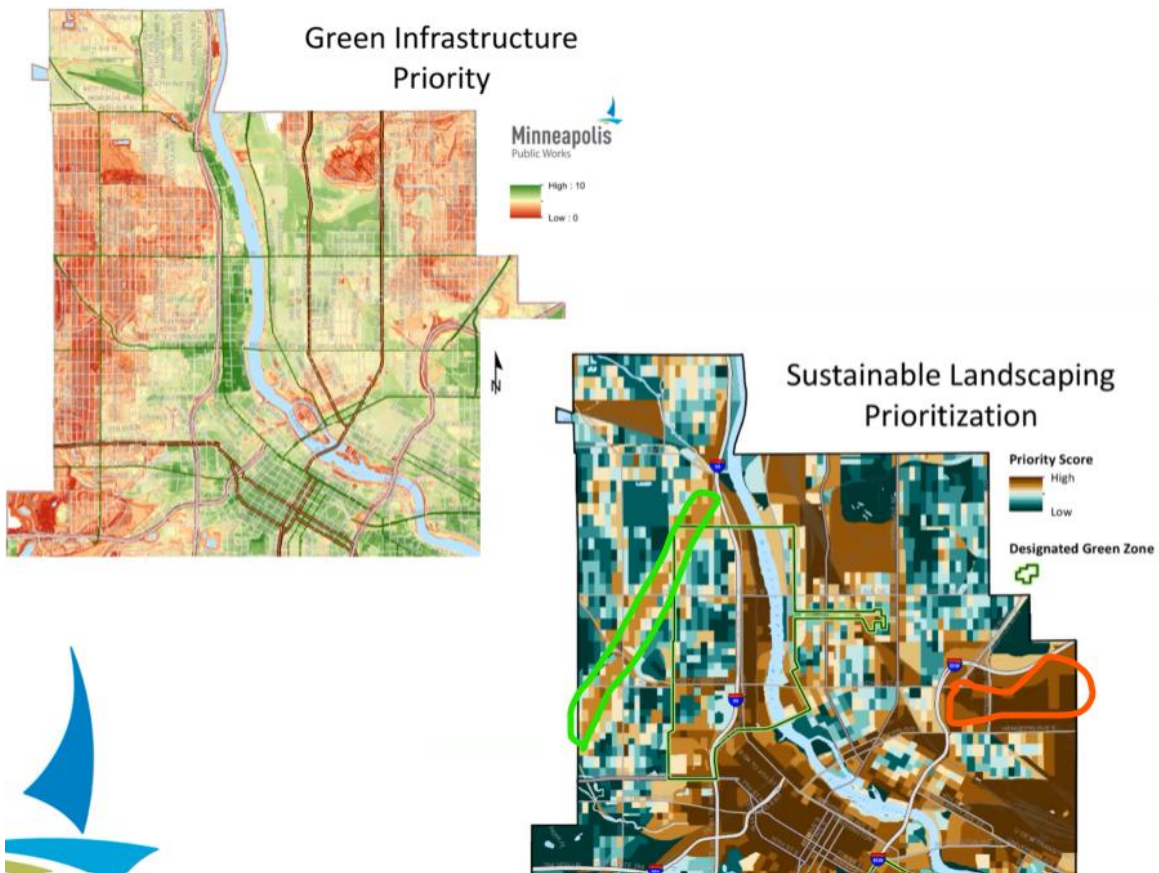
The trigger where GI must be evaluated: the ordinance is one-half acre of land (down from one-acre).

Green Infrastructure Program Goals

- Mimic natural hydrology
 - Reduce runoff
 - Clean water
- Reduce impervious
- Create habitat
- Add trees



The department uses a couple things to help guide them. Two important maps that Bell uses to evaluate projects are the overall Green Infrastructure Priority map and the other is the Sustainable Landscaping Prioritization map.



Highlighted areas in the Sustainable Landscaping Prioritization map: the area circled in green indicates the general area affected by the 2011 tornado, and the area circled in orange is the Mid City Industrial Area.

In the map on the left, the green infrastructure priority map looks at three main things: 1) the water quality model, PWD prioritization of that, and where are the biggest needs for water quality improvement. 2) equity factors and 3) suitability. If it's bright green Bell will be very focused on that area, if it shows up in bright red Bell will probably consult the second map and then think through other goals that they might be able to incorporate into green infrastructure. In the map on the right – Sustainable Landscaping Prioritization – opportunities are identified for sustainable landscaping by looking at tree canopy, impervious area, and neighborhood distance to a park. Booth pointed out the Mid-City Industrial Area (see Map area circled in orange) where large areas of land exist with tree planting opportunities, including replacing large numbers of ash.

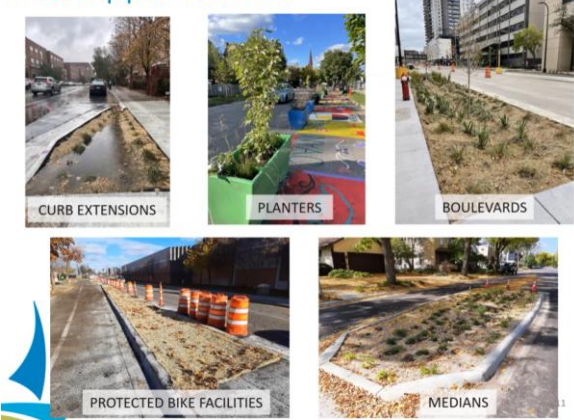
Bell discussed accomplishments since the program started in 2019: over 200 facilities were installed within the right-of-way, like this example with drainage and native plantings.



Boulevard with native plantings

Future Opportunities: working with partners such as Hennepin County, watershed districts, or MnDOT. Protecting existing trees, e.g. not allowing a rain garden to take down a tree. Bell works with Craig Pinkala to identify trees that should be preserved vs what trees could be replaced.

Tree Opportunities



Limitations that affect GI implementation include traffic and safety concerns (e.g. medians, cross walks and roundabouts) and bus stops.

Sievert commented on the effects of the natural boulevards such as this installation (see photo below). Many volunteer trees may pop up and the vegetation must be controlled. This can become a problem if the residents are not involved. Metro Blooms may train and educate residents as to what they will need to do over time with the vegetation. **This is an issue that should be addressed.**



Nicholson asked if there was concern about the upstream communities (e.g. Minnetonka) varying their stormwater capture which then affects the Minnehaha Creek watershed in Minneapolis. Bell is trying to work regionally but with a staff of one, there are limits.

McDonagh suggested that Bell could do a series of presentations to other communities regarding Minneapolis efforts and approaching MnDOT as well as other agencies.

Thanks to Allison for an excellent presentation. MTAC wants to support these efforts and advance these ideas. Contact Allison with ideas: Allison.bell@minneapolismn.gov

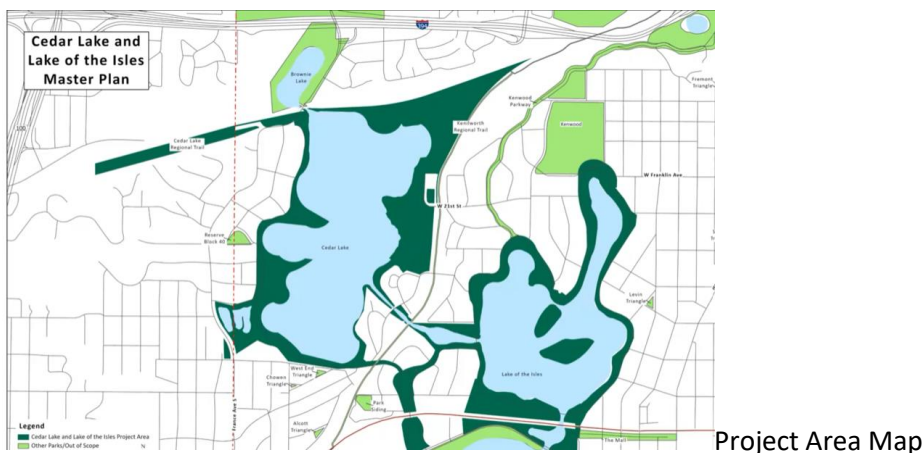
MPRB FORESTRY UPDATE

Sievert reported that the department's emphasis at this time is filling positions. Interviews for arborists and crew leaders have been ongoing. The new Forestry Dept. administrator is starting and will have 5 weeks overlap with the outgoing person. The Forestry Outreach Coordinator job description was finalized.

Bids from contractors for the 9,000 trees to be planted this spring are due on January 25th. Booth asked to be updated if there may be any difficulties getting some species/varieties of trees.

MPRB CONCEPT PLAN FOR CEDAR ISLES AND LAKE OF THE ISLES PARK LANDS

MacDonagh introduced Emma Pachuta, planner with MPRB.. Pachuta explained that the planning process is in the initial design phase. Priorities include maintaining and improving water quality and preservation of natural areas. The two design concepts were presented as well as the differences from the 2019 to the 2022 proposals.



Booth asked what is the Plan doing for tree canopy additions and management? At this time, Pachuta explained, the Plan is at the initial planning stages. Booth suggested including a Plan objective to protect existing trees and increase tree canopy. MacDonagh recommended evaluating existing tree canopy and expanding on that. Olmsted inquired about the potential of incorporating water quality solutions into the planning strategies. Pachuta discussed strategies for identifying point sources and including restoration alternatives. Working with watershed management organizations is a priority for including in the overall plan.

For more details the website is:

https://www.minneapolisparcs.org/park_care_improvements/park_projects/current_projects/cedar-lake-lake-of-the-isles-cedar-isles-master-plan/

Thanks to Pachuta. Contact her at epachuta@minneapolisparcs.org and 612-499-3711.

MTAC BUSINESS

MacDonagh explained that we will have speakers at our meetings every other month this year. MPRB Forestry will register and pay for MTAC members to attend the annual Shade Tree Short Course will be held virtually on March 15th and 16th

ADJOURNMENT

The Commission's Meeting was adjourned at approximately 7:00 p.m.

Respectfully submitted: Carol Sersland – Commission Secretary