

FARWELL PARK



LOCATION AND HISTORY

Farwell Park occupies a small block in the heart of Homewood, a historic neighborhood that has been home to Jewish residents and then later middle class African-Americans prevented from settling in other parts of town. The land was platted as a park in 1889 when the neighborhood was being contemplated, but it wasn't until 1910 that the Park Board was asked to formally accept the land as a park and to make modest improvements. The park was named for Farwell Place, a one-block-long street that runs north of the park. The origin of the street name is unknown, but may have been named by the developers of the neighborhood. The park was named in the original 1889 plat and the name was never officially adopted or changed.

The 1910 plan for improvements is unusual in that it was not prepared by Theodore Wirth, but by Morell and Nichols, the landscape architects hired by D. C. Bell Investment Company, who was developing the neighborhood. Wirth recommended that the plan (which featured very minimal improvements) be adopted by the board. Playground equipment was first installed in the park in 1968 as part of an effort to provide more facilities for children in north Minneapolis. The playground and plaza in the park were improved in 2001.

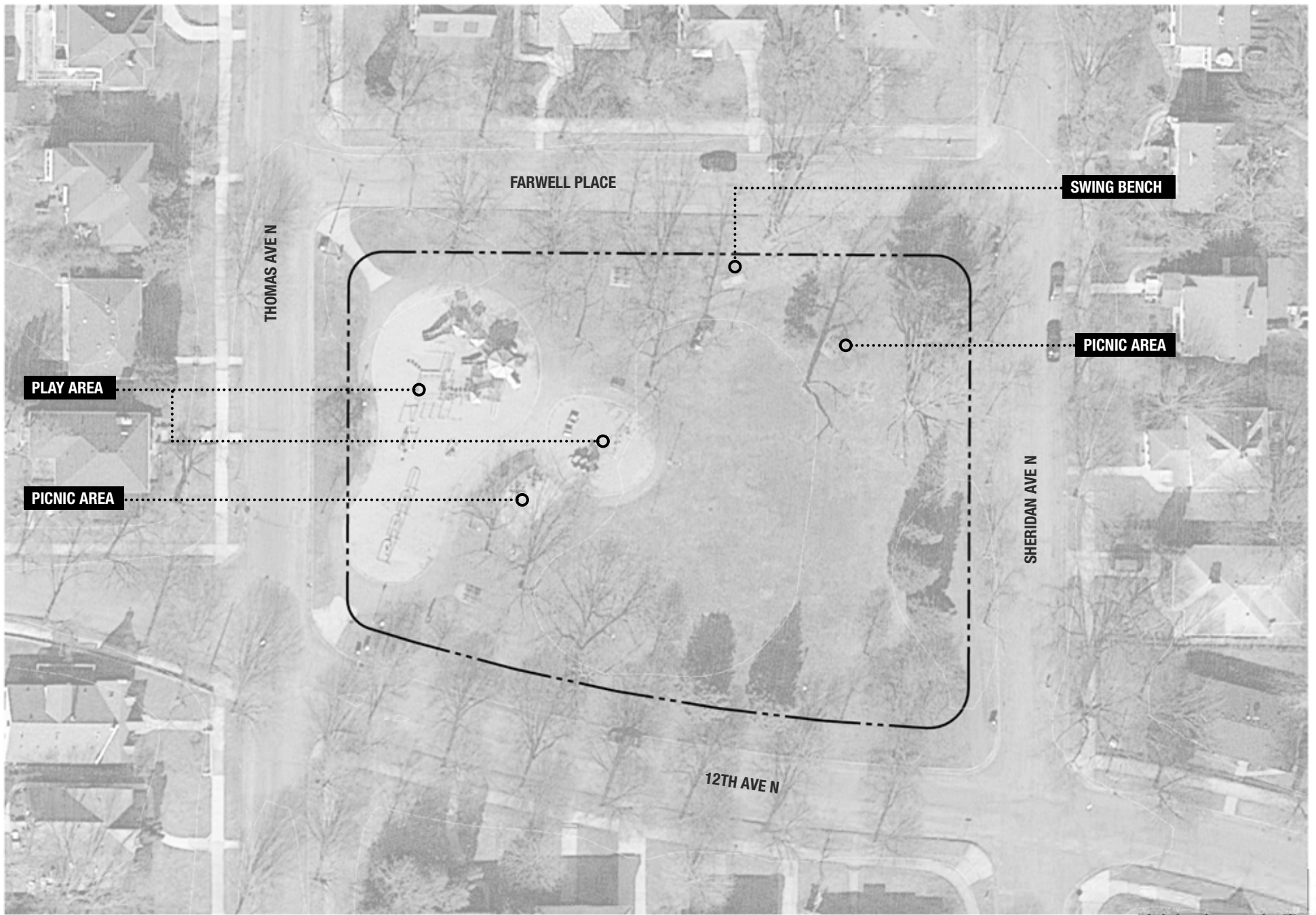
EXISTING CONDITIONS AND CHARACTER

Farwell Park is a quaint neighborhood

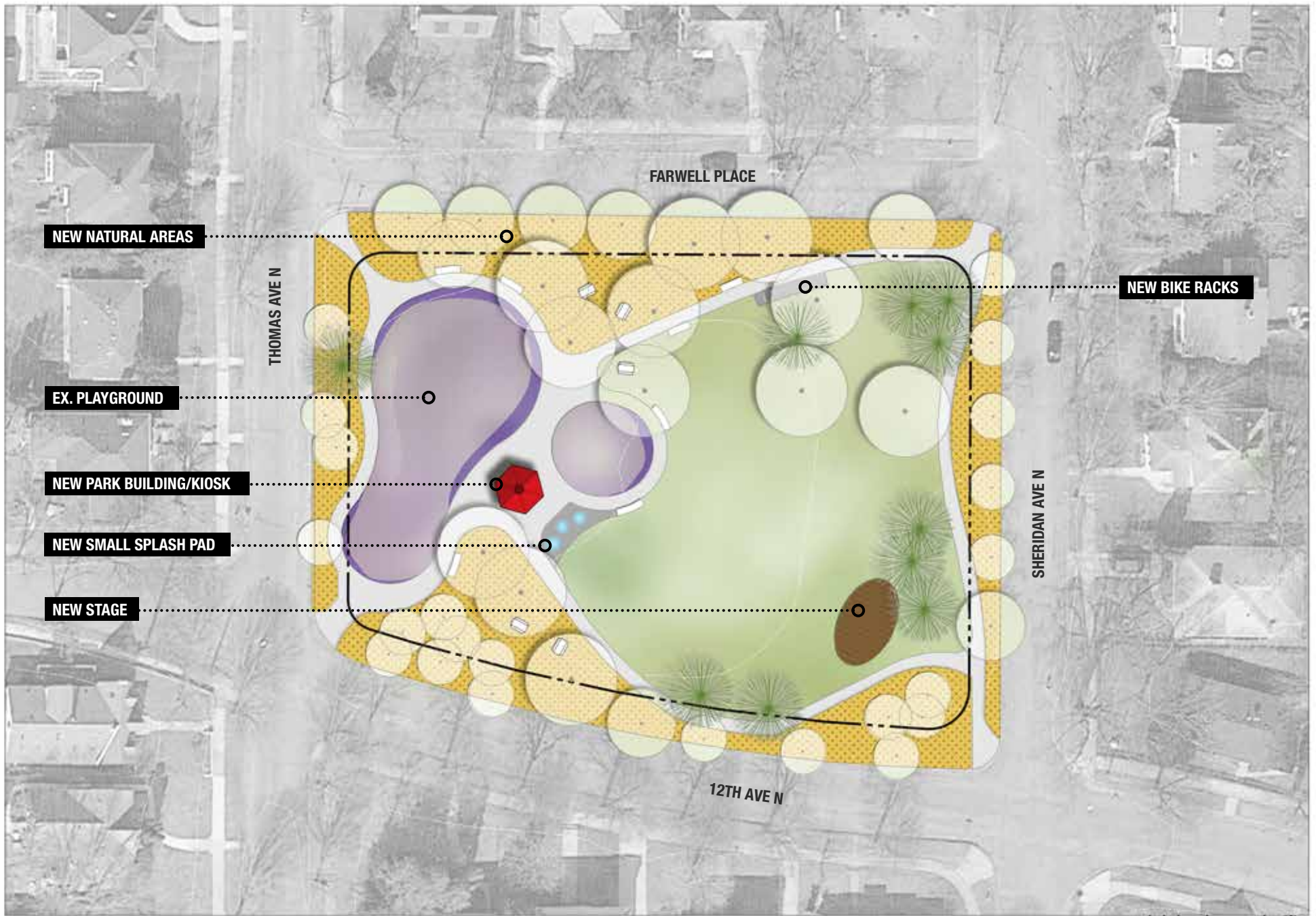
park surrounded by a vibrant and diverse neighborhood. This part of the north side does not have many parks, so this small oasis is extremely important to neighbors. Several play area containers occupy the western edge of the park, and a single pathway arcs from there to the northeast corner. Many large trees grow from the perimeter of the park, around an open green lawn area that is used for pick-up games, picnics, and seating for music and art events. There is no ability to stroll around the park, and much of the seating is in disrepair. The local neighborhood organization has begun hosting programs in the park, especially featuring local music, art, and spoken word. The excitement created by these events has reinforced Farwell as the heart of the community.

THE PROPOSED DESIGN

The design for Farwell recognizes the artistic bent of the neighborhood, the fact that few other parks exist nearby, and the park's small size. The play areas are improved in their existing locations. A small park building or kiosk near the play areas could provide park program information, allow for park storage, and create a screened platform for a portable toilet. Near the play areas and kiosk is a new splash plaza: a small interactive water feature with just a few elements. This element fills a need in the area, where no water facilities are easily accessible. The facility could be user-activated, include a few plaza-mounted jets or a single overhead cascade. The picnic area in this general location would



EXISTING CONDITIONS: FARWELL PARK



NEW NATURAL AREAS

THOMAS AVE N

FARWELL PLACE

NEW BIKE RACKS

EX. PLAYGROUND

NEW PARK BUILDING/KIOSK

NEW SMALL SPLASH PAD

NEW STAGE

SHERIDAN AVE N

12TH AVE N



PROPOSED PLAN: FARWELL PARK

move slightly southward to accommodate this new feature.

New walking paths flank all sides of the park, allowing neighbors to stroll a loop within the park, without crossing streets. This could also be a good feature for young park users learning to scoot or ride in a safe environment. Naturalized areas between the path and the streets create a floral and pollinator-friendly border all the way around the park.

A new, small, permanent performance stage occupies the southeastern corner of the park, where it can utilize the open lawn area for audience seating. The design of this feature could reflect some of the historic elements of the neighborhood, like the stone columns at neighborhood entrances. It would include electrical service, but not built-in amplification. It would be geared for both programmed and impromptu performances, whether an organized local music festival, or just for youth practicing spoken word or rap to friends and family. With the few key new features in place, Farwell Park will serve even better as the hub and heart of an artistic, racially diverse, close-knit neighborhood.

CONNECTIONS BETWEEN PARKS

The City of Minneapolis's Plymouth Avenue bikeway runs just one block north of the park and connects easily westward to the primary entrance of Theodore Wirth Park. It will also provide direct connection to the planned Bottineau LRT line (Blue Line Extension).

KNOWN LAND USE AND COORDINATION ISSUES

No known land use or coordination issues exist at Farwell Park.

PROCESSES

FARWELL

	1: General Input Spring-Fall 2017 <i>Input themes prior to initial concepts</i>	2: Initial Concepts Winter 2018 <i>Input themes on initial concepts</i>	3: The Preferred Concept Now <i>Key elements of the concept</i>
aquatics	Strong desire for pool or splash pad →	Some desire for splash pad in the park, but most reluctant to reduce play area →	New small splash plaza located near play areas
play	Play area very important, but desire for new equipment →	Strong desire to keep play area the same size →	Improved traditional play area in same general location and size as existing
athletics	Multi-use field well used for impromptu games →	no comments →	Enhanced open lawn for group gatherings and unprogrammed sports play
courts	no comments →	no comments →	No court activities planned for this park
winter	no comments →	no comments →	No winter activities planned for this park
landscape	no comments →	no comments →	New natural areas included around edges of park
other	Strong arts focus here, including requests for platforms for events, performance spaces, etc. → Suggest pavilion/gathering structure	Mixed opinions on the permanent stage Need bathrooms	New picnic shelter near playground New small stage for occasional performances

COST ESTIMATE

Park Name	Asset Type	Project	2019 ESTIMATED COST/PROJECT	NOTES
Farwell	Aquatics	Small splash pad, incl. new mechanical/storage building	\$ 607,480	
Farwell	Play	Traditional Play Structure in existing container	\$ 484,085	
Farwell	Landscape	Naturalized areas	\$ 21,357	
Farwell	Other	Performance Stage	\$ 104,411	
Farwell	Other	Renovate walking paths	\$ 151,870	
Farwell	Other	Miscl. signs, trees, furniture	\$ 27,384	
Farwell	TOTAL		\$ 1,396,586	

OPERATIONS ESTIMATE

FARWELL				
FACILITIES	Total Per Unit Operations Cost	△ Qty	△ Cost	
Splash Pad	\$ 35,000	1	\$ 35,000	
Amphitheater	\$ 1,500	1	\$ 1,500	
Kiosk Building	\$ 2,000	1	\$ 2,000	
Difference			\$ 36,500	