

East Bank Park Implementation Strategy

Central Riverfront Regional Park | Minneapolis



Minneapolis
Park & Recreation Board

Project Area



MPRB has substantial park assets on the East Bank

Through a SAFHB grant, MPRB is coordinating with the Mississippi Watershed Management Organization, local businesses, the neighborhood, the City of Minneapolis, the St. Anthony Falls Heritage Board, and Hennepin County to create an **East Bank Park Implementation Strategy** to address:

- Asset Inventory
- Capital Project Scoping & Budgeting
- Project Prioritization
- Preliminary Phasing Strategy
- Capital Sources & Uses Strategy
- Operating Model & Pro Forma



MPRB has substantial park assets on the East Bank

- Many of the assets need major capital repair or replacement.
- With > 3 million annual visits, public use of the East Bank continues to grow and diversify.
- Some of Minneapolis' largest community events happen on the East Bank.
- The 2015 Central Riverfront Master Plan identifies an array of investments over the next 15 years but even more investment demands exist.
- Because of the Main Street streetscape, ADA access demands are particularly high.
- Access to traditional MPRB funding is limited compared to the magnitude of investment demands.
- Reconstruction needs are significant, ongoing operational costs are high and many sensitive historic assets must be carefully treated.
- A thoughtful, smart approach is required.

Formative Moves Adopted in the Master Plan

Change the park name-
SAINT ANTHONY FALLS REGIONAL PARK

Complete a continuous bicycle and pedestrian trail system on both sides of the River.

Incorporate green infrastructure into new design initiatives.

Expand regional park boundary at Bassett Creek and realign the parkway to create larger riverfront park space.

Expand regional park boundary toward downtown between Hennepin Avenue and the Postal Service building.

Build visitor services into the Mill Ruins area by collaborating with partner agencies to create a visitor's center on the St. Anthony Falls lock and dam structure.

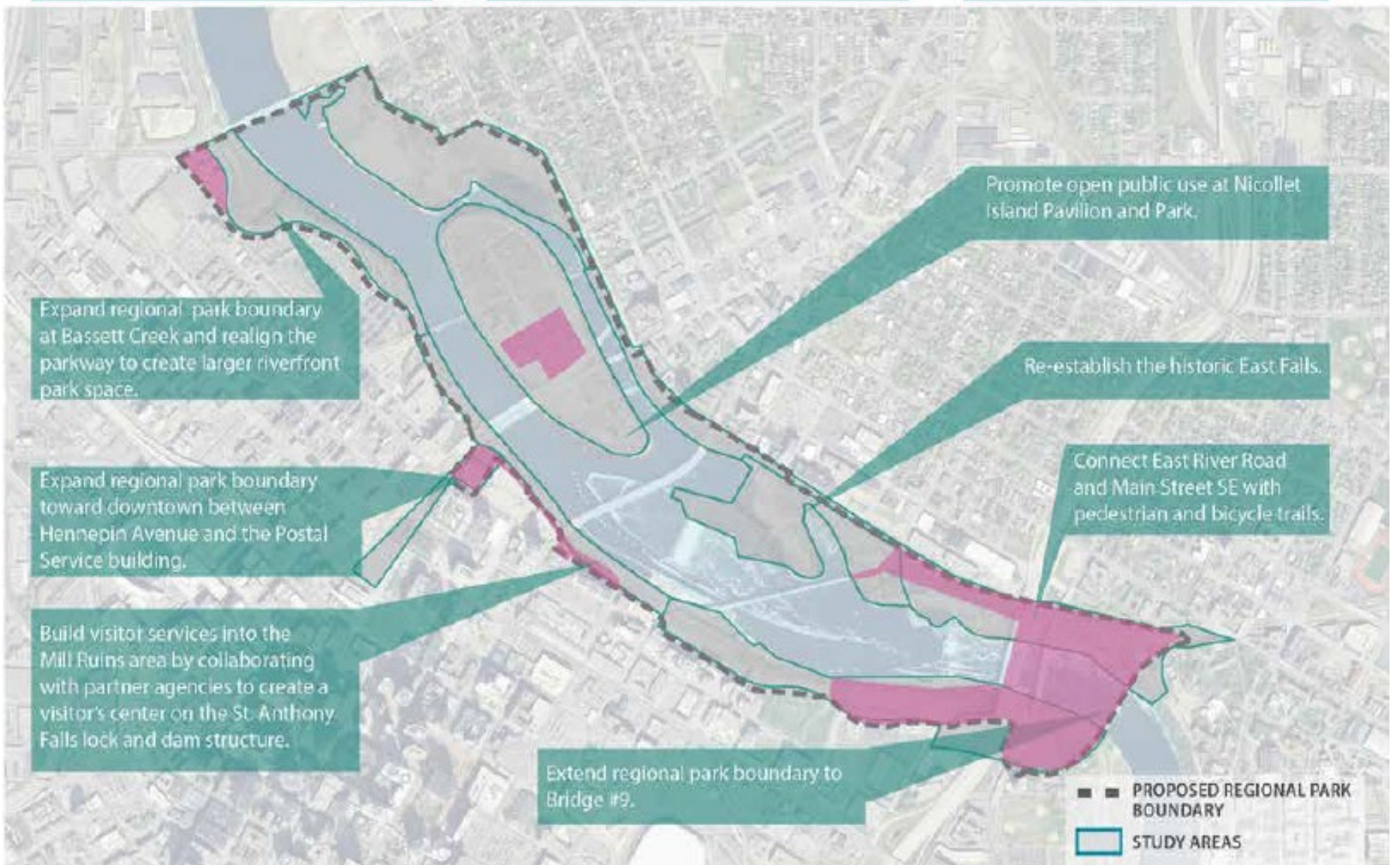
Extend regional park boundary to Bridge #9.

Promote open public use at Nicollet Island Pavilion and Park.

Re-establish the historic East Falls.

Connect East River Road and Main Street SE with pedestrian and bicycle trails.

- ■ PROPOSED REGIONAL PARK BOUNDARY
- STUDY AREAS
- BOUNDARY EXPANSION



Formative Moves Adopted in the Master Plan

Historic Main Street (E Hennepin Avenue to 6th Avenue SE)

Supporting Initiatives (see Figure 40):

- E. Create more flexible space for everyday activities and events, while maintaining historic features and green space.
- F. Integrate stormwater treatment to define separation between the roadway and trail system.
- G. Create a performance/event space under the 3rd Avenue Bridge by enhancing lighting and the bridge understructure.
- H. Create public gathering areas at the water's edge while promoting shoreline restoration.
- I. Create separate bike and pedestrian trails along historic Main Street SE.



Charrette Concept for 3rd Avenue Bridge Performance Space



Outdoor Seasonal Dining



Charrette Concept for Flexible Street Section for Festivals/Market tents

Project Timeline

- **December 2020:**
 - Project scoping
- **Jan-Feb 2021:**
 - Asset Inventory
 - Project website
- **Spring 2021:**
 - Community Engagement Plan to MPRB Board of Commissioners
 - Stakeholder interviews and meetings
 - Draft Project Prioritization
 - Preliminary Phasing Strategy
 - Capital Sources & Uses Strategy
 - Operating Model
- **Summer 2021:**
 - Present Strategy to SAFHB and MPRB Board of Commissioners

East Bank Park Implementation Strategy

