



Minneapolis Park & Recreation Board



**LORING PLAYGROUND
IMPROVEMENTS - CONCEPT PLAN**



Minneapolis

Park & Recreation Board

LORING PLAYGROUND IMPROVEMENTS - CONCEPT PLAN

The proposed playground equipment focuses on a combination of custom, nature-inspired and net-based play features with tall structures, traditional elements (slides, swings, sand play area, spinners, etc.), and climbable features to create an accessible and challenging experience.

Feedback also suggested finding playground features and colors that fit Loring Park and context. The design response is to have a sculptural look to the East/Upper 2-5 age play structures (nodding to the other sculptural elements in and around Loring Park), then transition to a color palette and features inspired by nature in the West/Lower 5-12 age play structures closer to Loring Pond.

For sensory and imaginative play the playgrounds feature multi-sensory learning panels, leaf-shaped translucent panels casting vibrant colors onto the ground, and textured elements inspired by nature.

The proposed playground surface will switch from sand to accessible engineered wood fiber (EWF) and accessible rubber surfacing (poured into place onsite, NOT loose/shredded rubber).

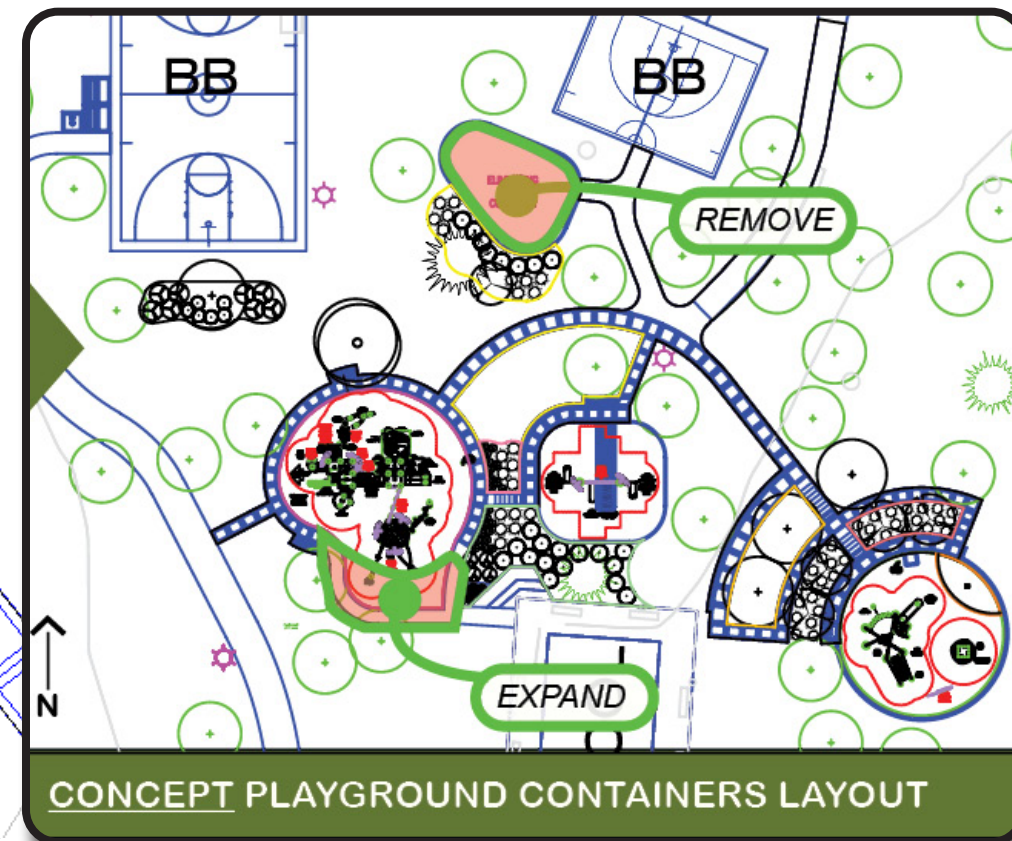
Finally, supported by neighborhood meetings, park staff, site pop-up meetings, survey, as well as the master plan, the proposed concept removes the north container (5-12 age) to provide larger separation between the basketball and playground park uses. The West/Lower 5-12 age container is expanded to allow for larger playground features. The north container will be restored to greenspace with stone blocks added to support users of half court basketball.

Additions or alternates to the concept from community feedback are described on the following pages.

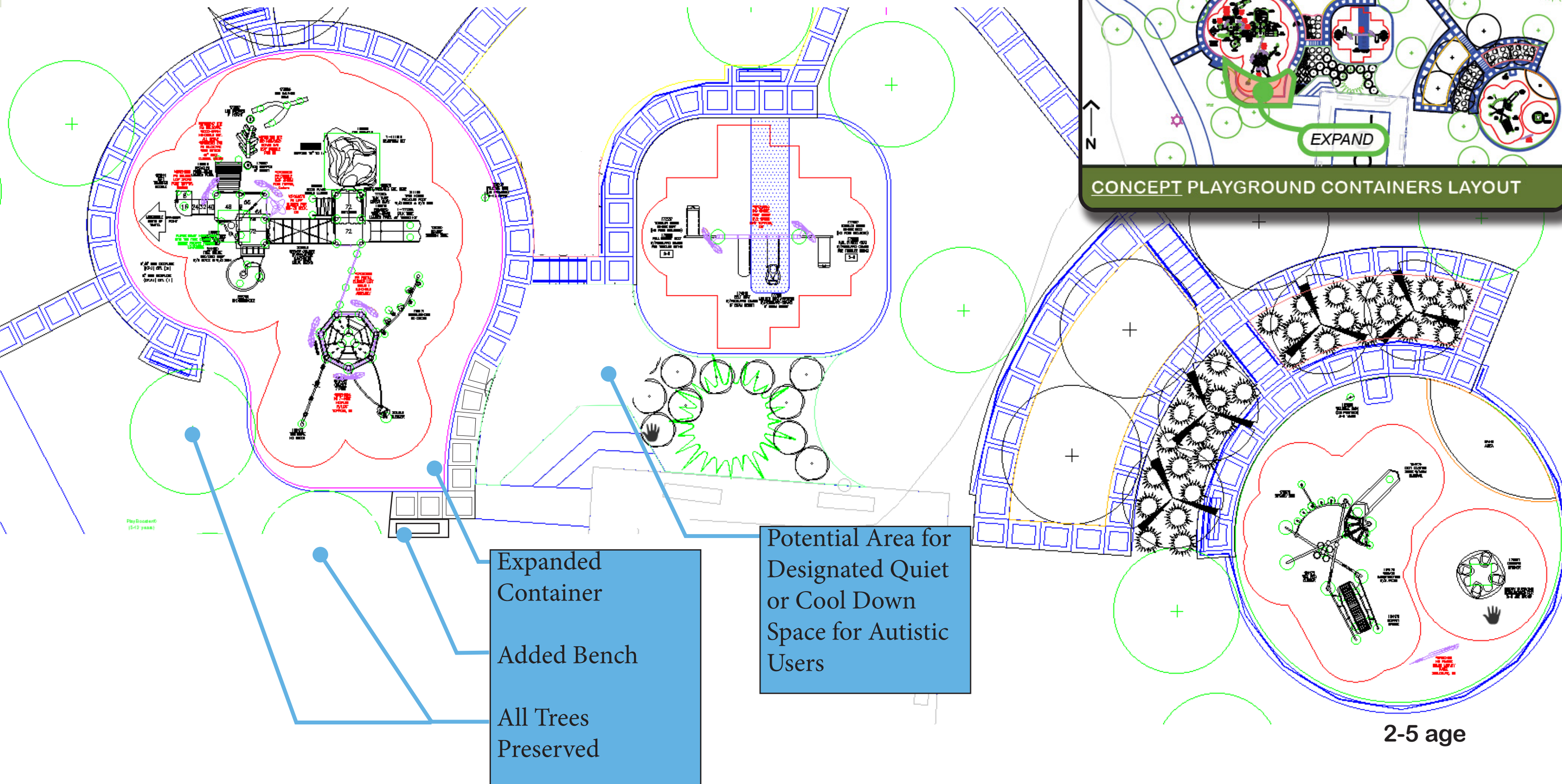
CONCEPT PLAN LAYOUT

5-12 age (Expanded)

Swings



CONCEPT PLAYGROUND CONTAINERS LAYOUT



Expanded Container
Added Bench
All Trees Preserved

Potential Area for Designated Quiet or Cool Down Space for Autistic Users

2-5 age

BIRDS EYE VIEW: 5-12 CONTAINER IN FOREGROUND, 2-5 CONTAINER IN BACKGROUND



No new plantings
proposed



Loring Park

1150880-01-02-06 • 04.01.2021



©2021 Landscape Structures. All Rights Reserved.

VIEW 1 : WEST/ LOWER PLAYGROUND CONTAINER (5-12 AGE GROUP)



Translucent Light Panels

Rubber ADA surfacing will be added to specific accessible features and will be in final plan.

lsm
landscape
structures

Loring Park

1150880-01-02-01 • 04.01.2021

flagship
recreation

©2021 Landscape Structures. All Rights Reserved.

VIEW 2 : WEST/ LOWER PLAYGROUND CONTAINER (5-12 AGE GROUP)



Integrated Climbing, Sliding,
Spinning, Multi-level Play
Structure

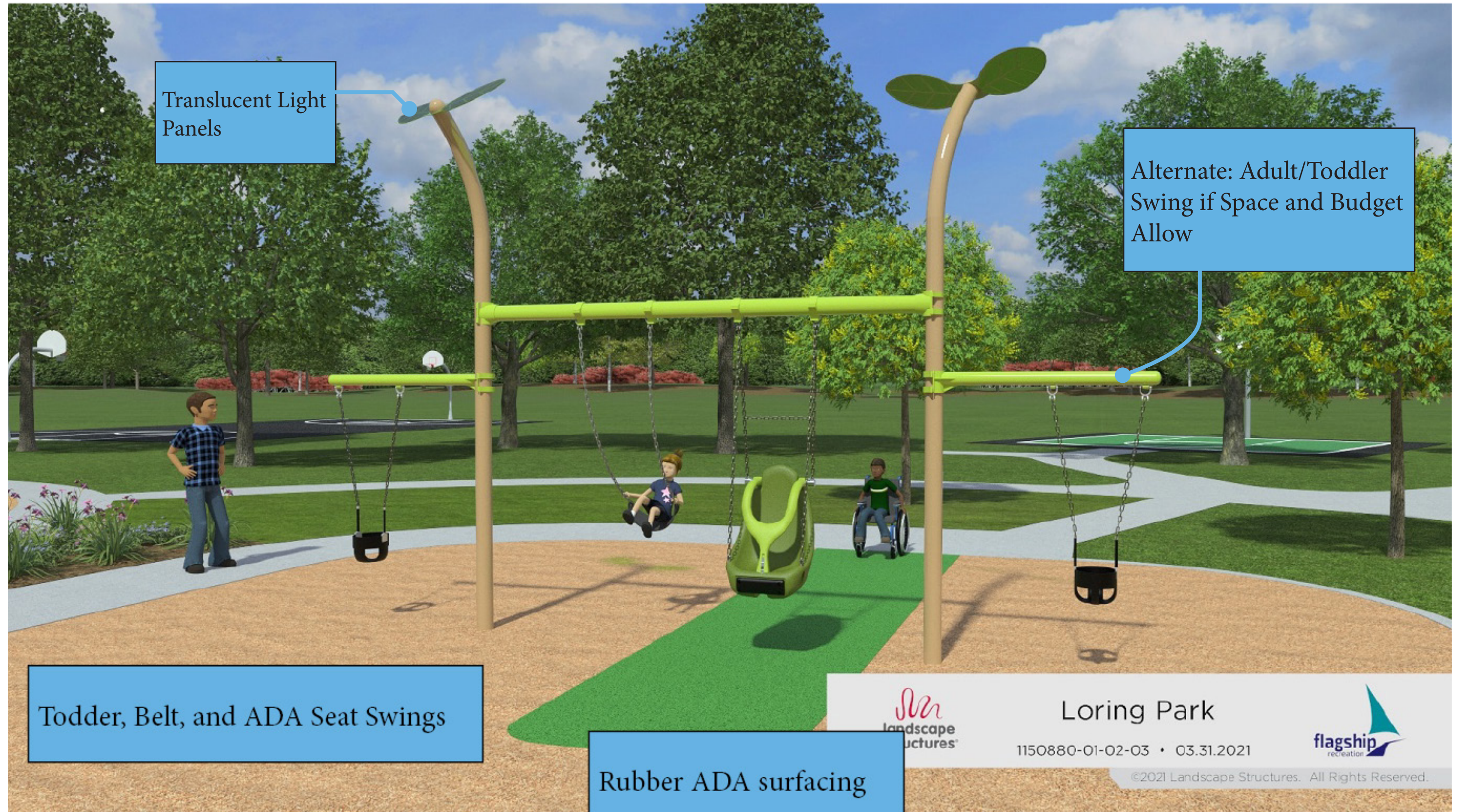


Loring Park

1150880-01-02-02 • 03.31.2021



VIEW 1 : MIDDLE PLAYGROUND CONTAINER (MIXED AGE GROUPS)



Translucent Light Panels

Alternate: Adult/Toddler Swing if Space and Budget Allow

Todder, Belt, and ADA Seat Swings

Rubber ADA surfacing



Loring Park

1150880-01-02-03 • 03.31.2021



©2021 Landscape Structures. All Rights Reserved.

VIEW 1 : EAST/UPPER PLAYGROUND CONTAINER (2-5 AGE GROUP)



Sculptural Main Structure with Accessible Features - Bridge, Slide, Balance and Climb Elements

Sensory Panels

Spinner

Sand Play Area



Loring Park

1150880-01-02-04 • 03.31.2021



©2021 Landscape Structures. All Rights Reserved.

VIEW 2: EAST/UPPER PLAYGROUND CONTAINER (2-5 AGE GROUP)



Rubber ADA surfacing will be added to specific accessible features and will be in final plan.

LS
landscape
structures

Loring Park

1150880-01-02-05 • 03.31.2021

flagship
recreation

©2021 Landscape Structures. All Rights Reserved.