

Hennepin County

Project Goals



**ENGAGE COMMUNITY
AND NEIGHBORS**



**ECONOMY AND JOB
ACCESS**



**SAFETY AND
ACCESSIBILITY**



**ACTIVE LIVING AND
ENVIRONMENTAL
HEALTH**



**MULTIMODAL
CONNECTIVITY**



MAINTENANCE

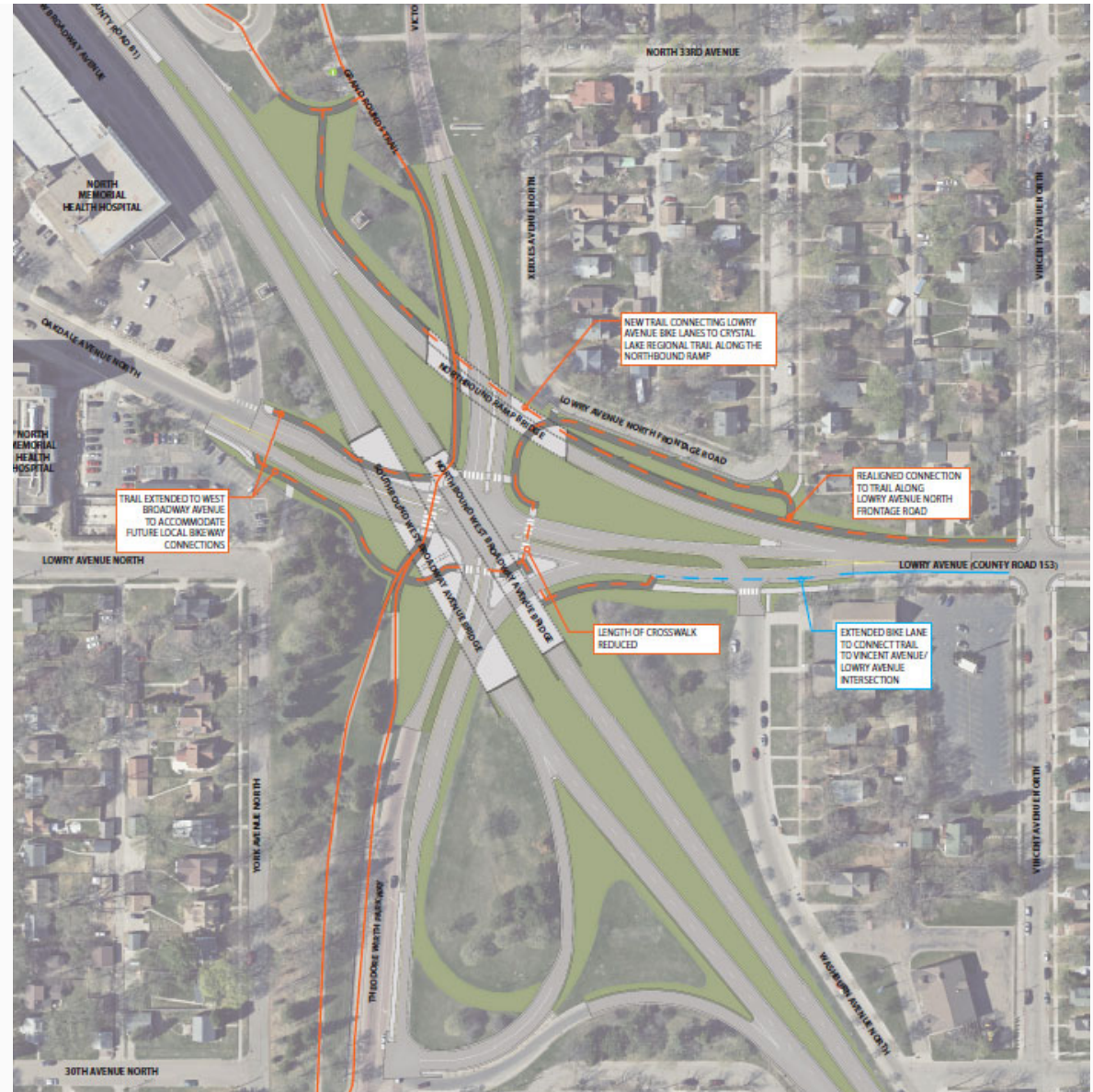
Key Project Features

- Replace 3 structures at the end of their service life
- Minimize construction impacts
- Minimize environmental/community impacts
- Improve multi-modal access
- Lowers intersection grades to improve vertical clearance
- Intersection moves to the east with reduced roadway width and bridges move to the west
- Reduces number of bridge piers from 10 to 3

Proposed Improvements

- Improved bike & pedestrian connections (Lowry Ave to Crystal Lake Reg. and Grand Rounds trails, sidewalk to trail upgrades)
- Reduction in crossing distances
- Traffic calming at intersection by reducing the footprint
- Removal of free rights
- Improved sight lines
- Aesthetic enhancements to the bridges

Hennepin County





Existing Condition Looking North

Hennepin County



Proposed View Looking North

Hennepin County