

Cedar Lake-Lake of the Isles Community Advisory Committee (CAC) Meeting #2 HISTORY

Indigenous Legacy – mid-1900s

October 26th, 2020



Minneapolis
Park & Recreation Board



Mni Sota "Place where the water reflects the sky"

<https://marlenamyl.es>
Illustrations by Marlena Myles
Translations by Dowí

Agenda

6:00-6:15 Intro & Welcome

6:15-6:35 Stake & Power Activity (part 2)

6:35-6:55 Discussion set-up // CAC Q&A

6:55-7:45 HISTORY CAC Discussion

7:45-8:00 Public comment // Wrap-up

CAC Group Agreement

A person is sitting on a bicycle on a sandy shore next to a lake. The person is wearing orange shorts and is reading a book. The bicycle is blue and black. The background shows a calm lake with trees and a large tree trunk on the right. The lighting suggests it is late afternoon or early evening.

1. Assume good intent
2. One conversation: respect the speaker, actively listen
3. Value different perspectives
4. Speak from your experience
5. Be respectful even if you don't agree
6. Step up, step back

MPRB Online Forum Guidelines

1. Both CAC members and the public will be given opportunities to speak
2. Stay on "mute" until you are called on to speak
3. Moderators reserve the right to mute or turn off videos
4. Any "zoom-bombing" will result in removal from the meeting
5. Please don't be anonymous – use your real name
6. We are not recording this meeting

A top-down view of a pond. The water is dark, and the surface is covered with numerous lily pads of various shades of green, some showing signs of decay or being eaten. Scattered throughout the pond are many fallen autumn leaves in shades of red, pink, orange, and yellow. The overall scene is a mix of natural textures and colors.

STAKE & POWER ACTIVITY

Questions

- Do you notice any differences or similarities between the boards?
- How do you see this exercise playing out in the master plan process?
 - How should we engage different levels of stakeholders?
- Are there any missing stakeholders that should be added?



RESILIENCY

CLIMATE
CHANGE

PROGRAMMING

RACIAL EQUITY

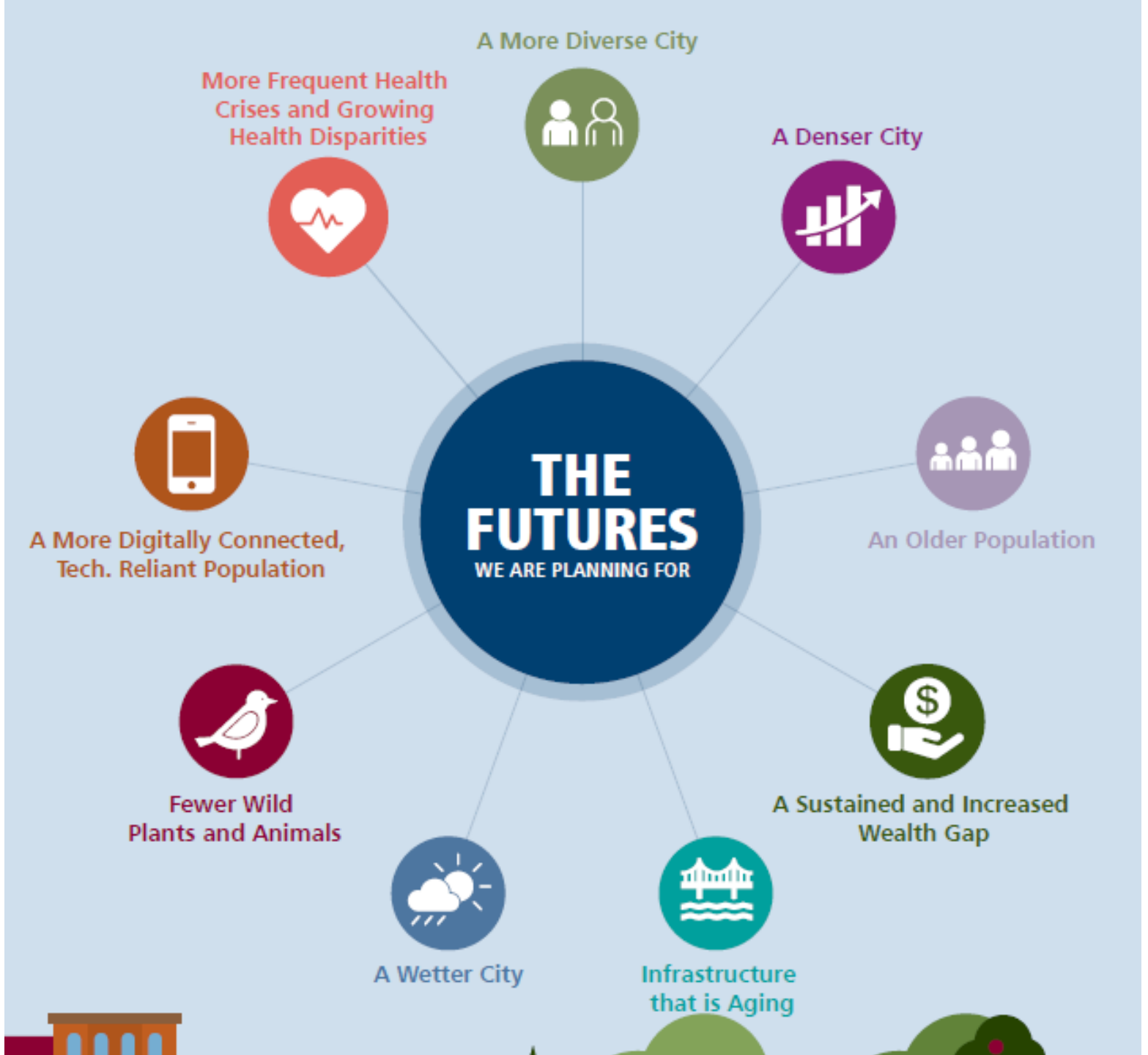
COMMUNITY
VOICE

HISTORY

SAFETY

ACCESS

Draft of "The 9 Futures"





CEDAR LAKE/LAKE OF THE ISLES MASTER PLAN

**HISTORY AND
EQUITY**

**CAC MEETING #02
Monday, October 26, 2020**

INTRODUCTIONS

QUINN EVANS
cultural landscapes

Brenda Williams, PLA
Principal

Shelby Scharen
Designer

TEN x TEN
landscape architecture

Maura Rockcastle, PLA
Principal

Erica Christenson, PLA
Director

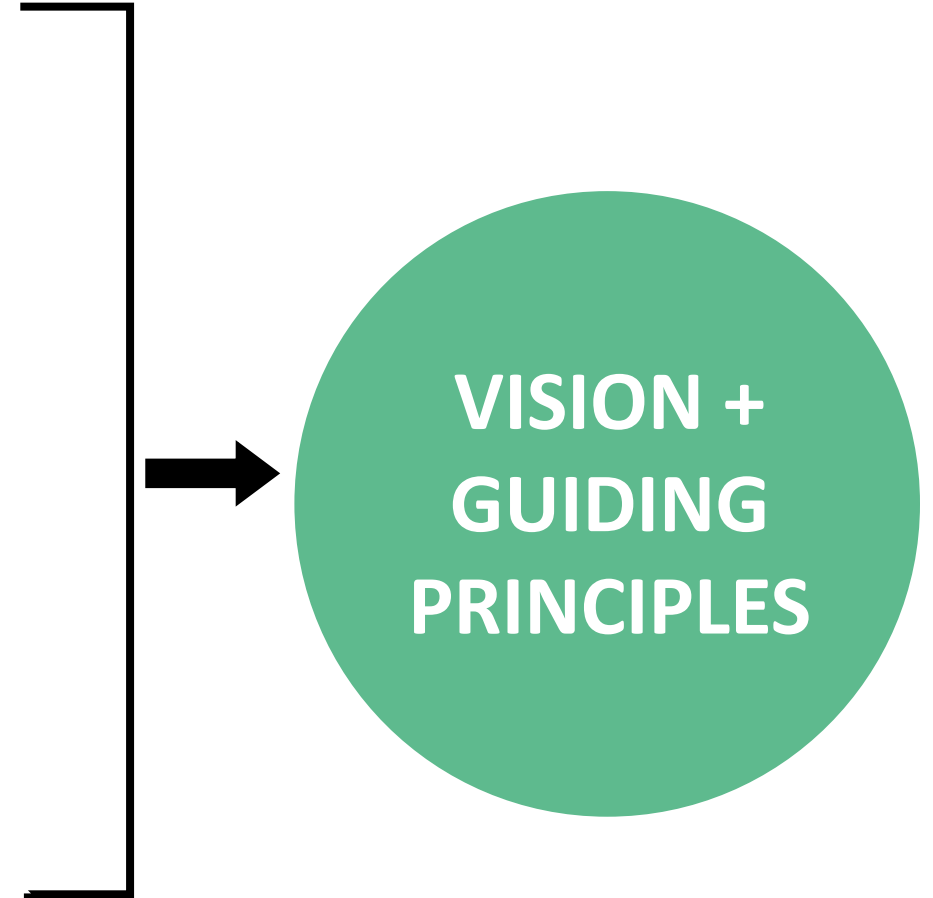
DISCOVERY + ASSESSMENT

1 Access

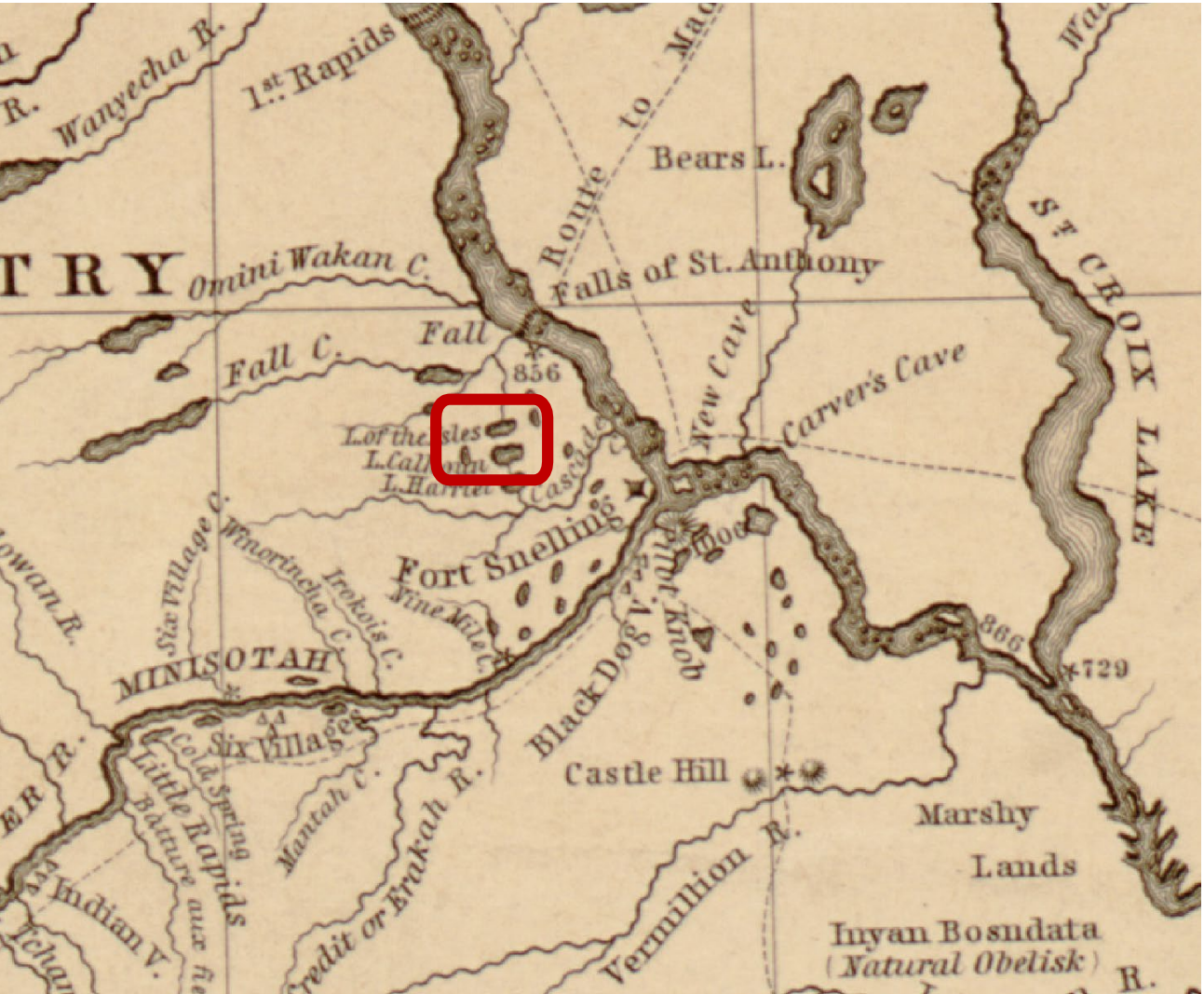
2 History

- > Indigenous Legacy
- > Physical Change Over Time
- > Design and Planning Legacy

3 Resilience



INDIGENOUS LEGACY

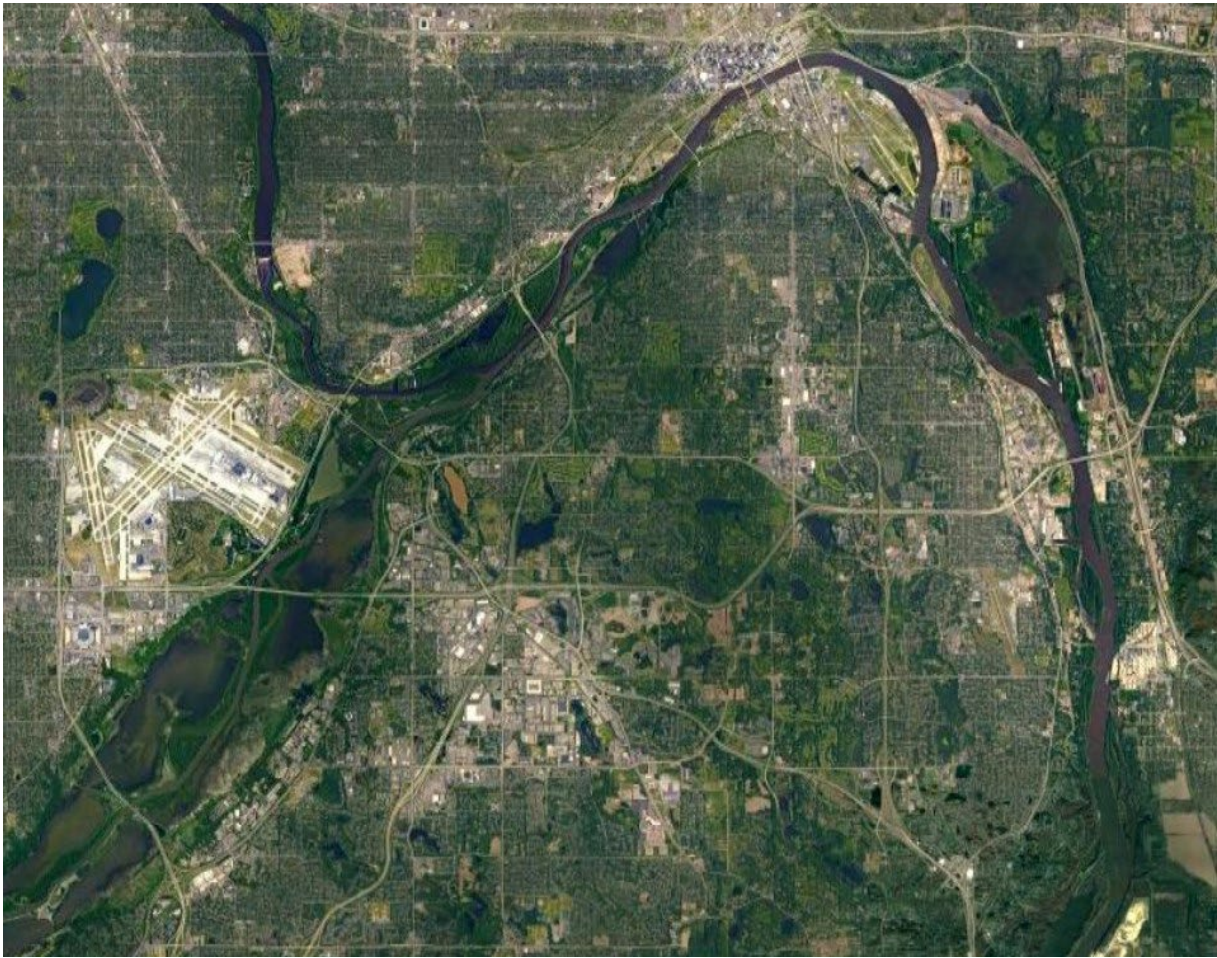
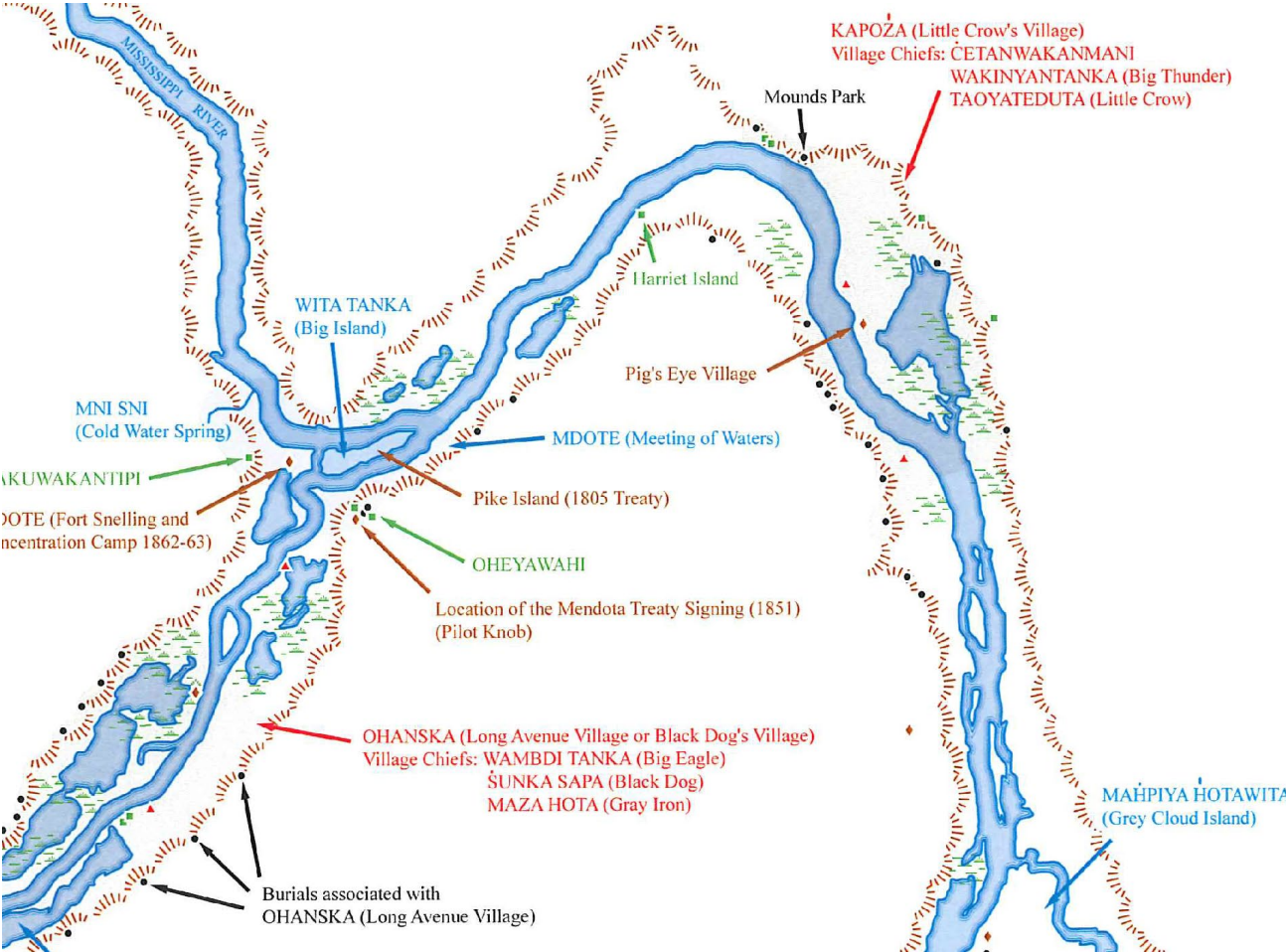


Hydrographical Basin of the Upper Mississippi River - 1843



Historic Context - 1839

INDIGENOUS LEGACY



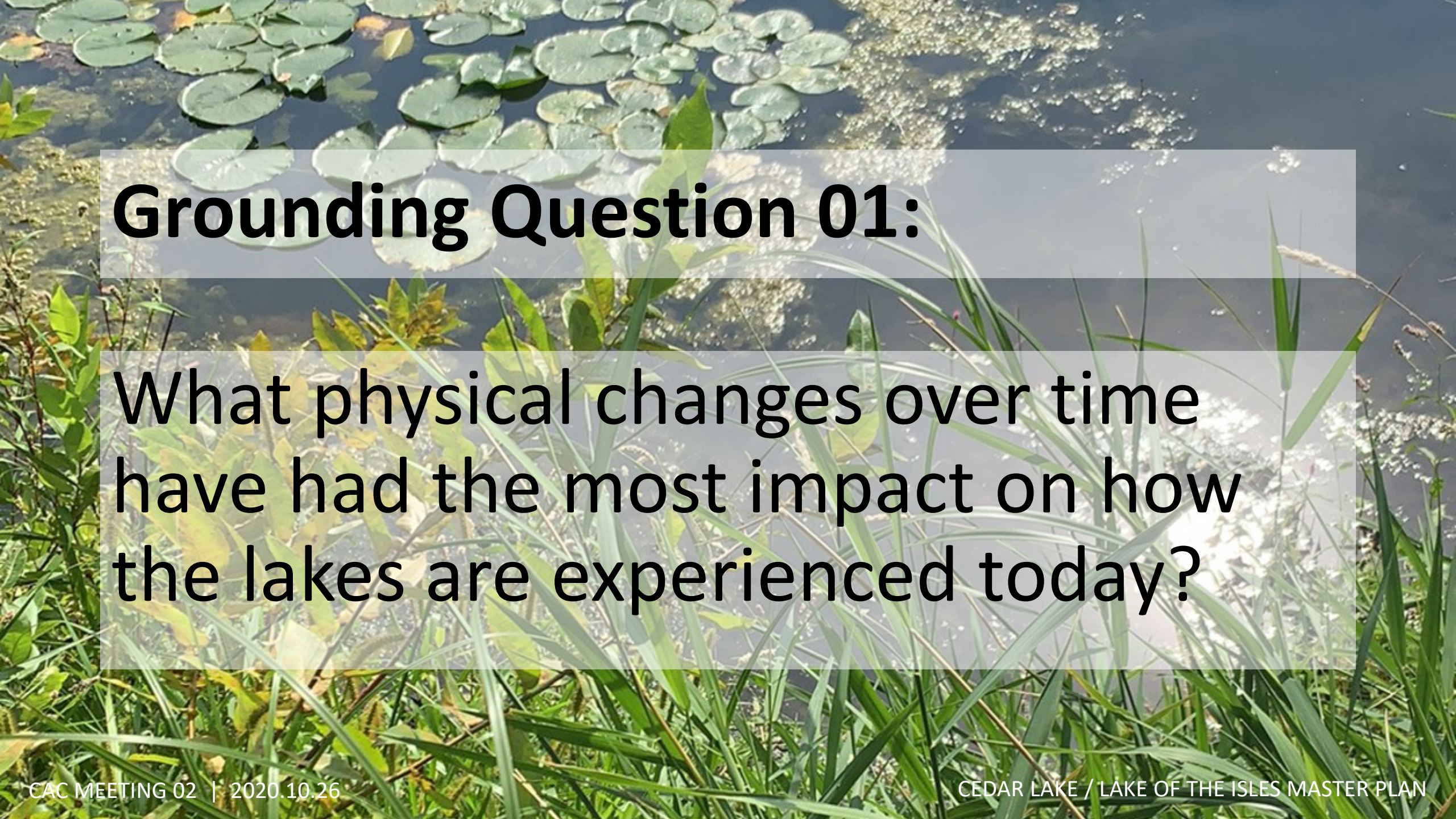
Dakota presence in the River Valley

LISTING SESSION SUMMARY

- The Dakota names for these lakes and landscapes is an oral history difficult to track down. Different bands had different words to describe different places.
- It has been over 100-175 years since Dakota bands lived, wild riced and fished these landscapes. The history that explains why they are not living in these landscapes today and why they are disconnected to them is important to acknowledge.
- There is no indigenous representation within the MPRB leadership or staff guiding this project.

LISTING SESSION – SHARED STORIES

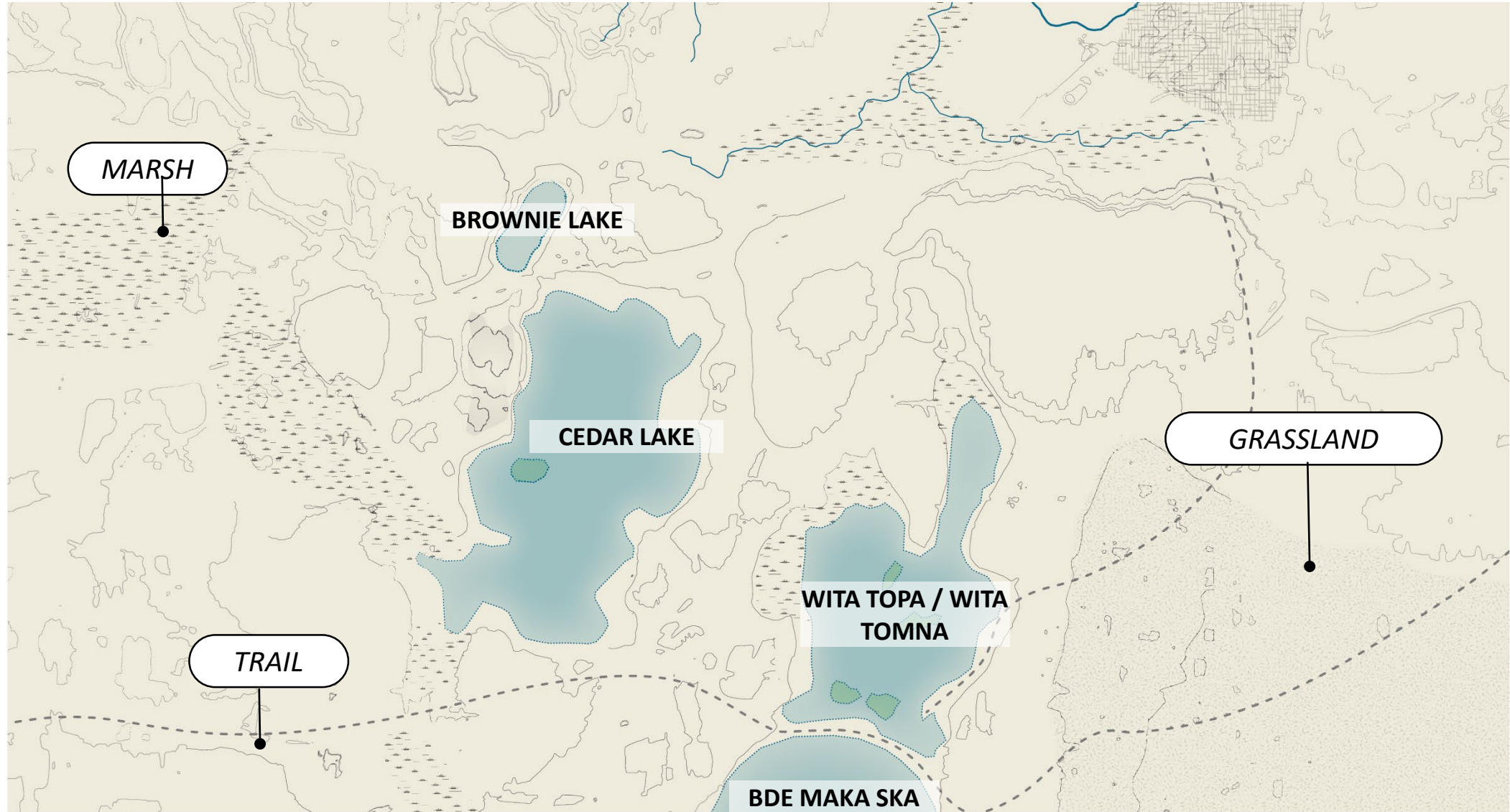
- Parts of these lakes and the areas surrounding them have spiritual significance.
- Contemporary stories of how Dakota communities maintain a connection to these landscapes today and how these stories are passed down through generations.
- Water quality and the Dakota community's connection to bodies of water.
- Connections to these landscapes through foraging, harvesting, and fishing are and always have been important.
- How minorities and people of color have been restricted from these landscapes over time is an important story to tell and to consider for the future of this place.

A photograph of a pond with lily pads and reeds. The water is dark, and the lily pads are green and round. The reeds are tall and green, with some yellowing at the tips. The background is a soft, out-of-focus landscape.

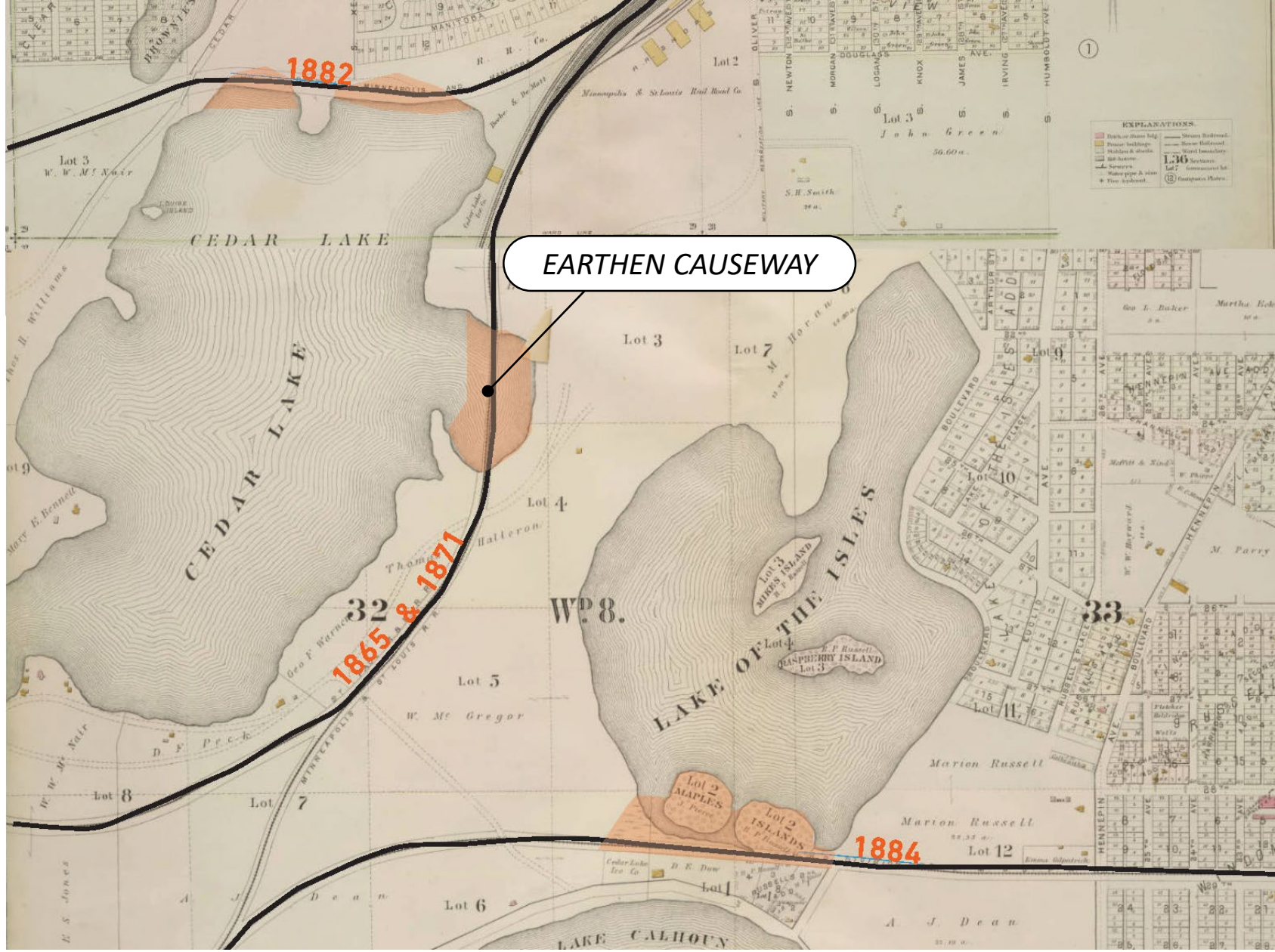
Grounding Question 01:

What physical changes over time have had the most impact on how the lakes are experienced today?

PERIOD PLAN 1854



1885



Historic Context - Government Land Office

DESIGN AND PLANNING LEGACY

City Beautiful Movement



World's Columbian Exposition, Chicago - 1893



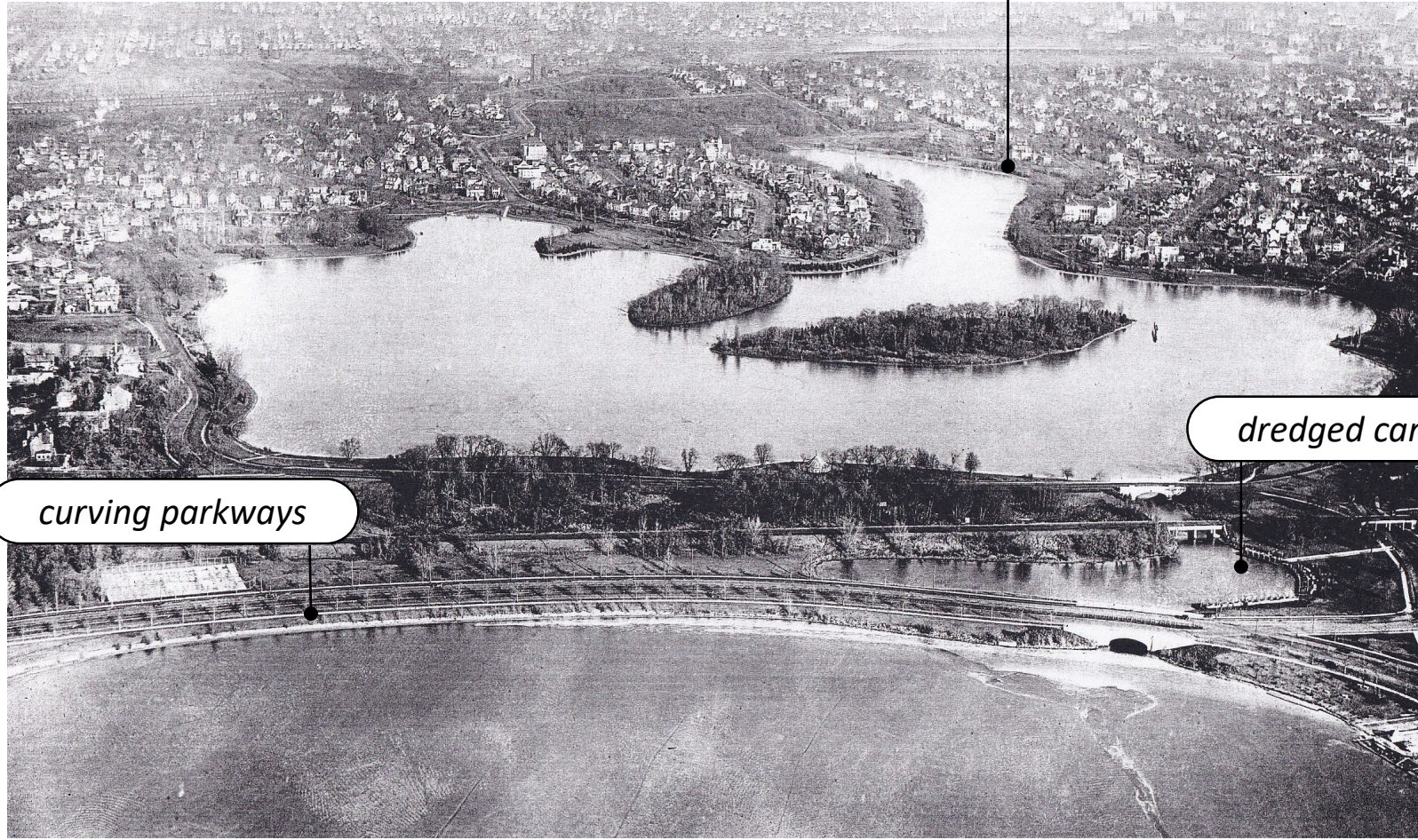
Penn Valley Park, Kansas City, MO



Lake Park, Milwaukee, WI

DESIGN AND PLANNING LEGACY

City Beautiful Movement

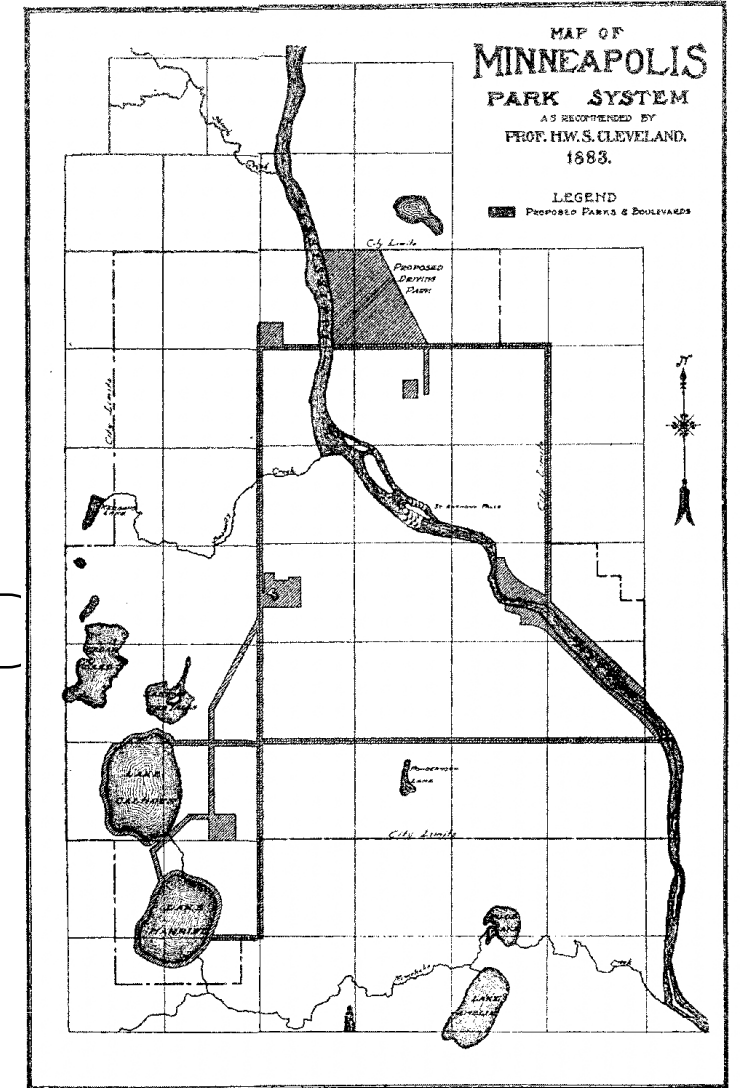


grand rounds

dredged canals

curving parkways

Lake of the Isles - 1928



Park System Plan, 1883 by H.W.S. Cleveland

PARK DESIGN

- 1888: First PKWY around LOI
- 1907-1911: PKWY raised to 11' above lake level
- turf + flowerbeds



Lake of the Isles Boulevard - 1926

DREDGING



Dredging Lake of the Isles - 1909



Dredging Lake of the Isles - 1927

A NAVIGABLE WATERWAY

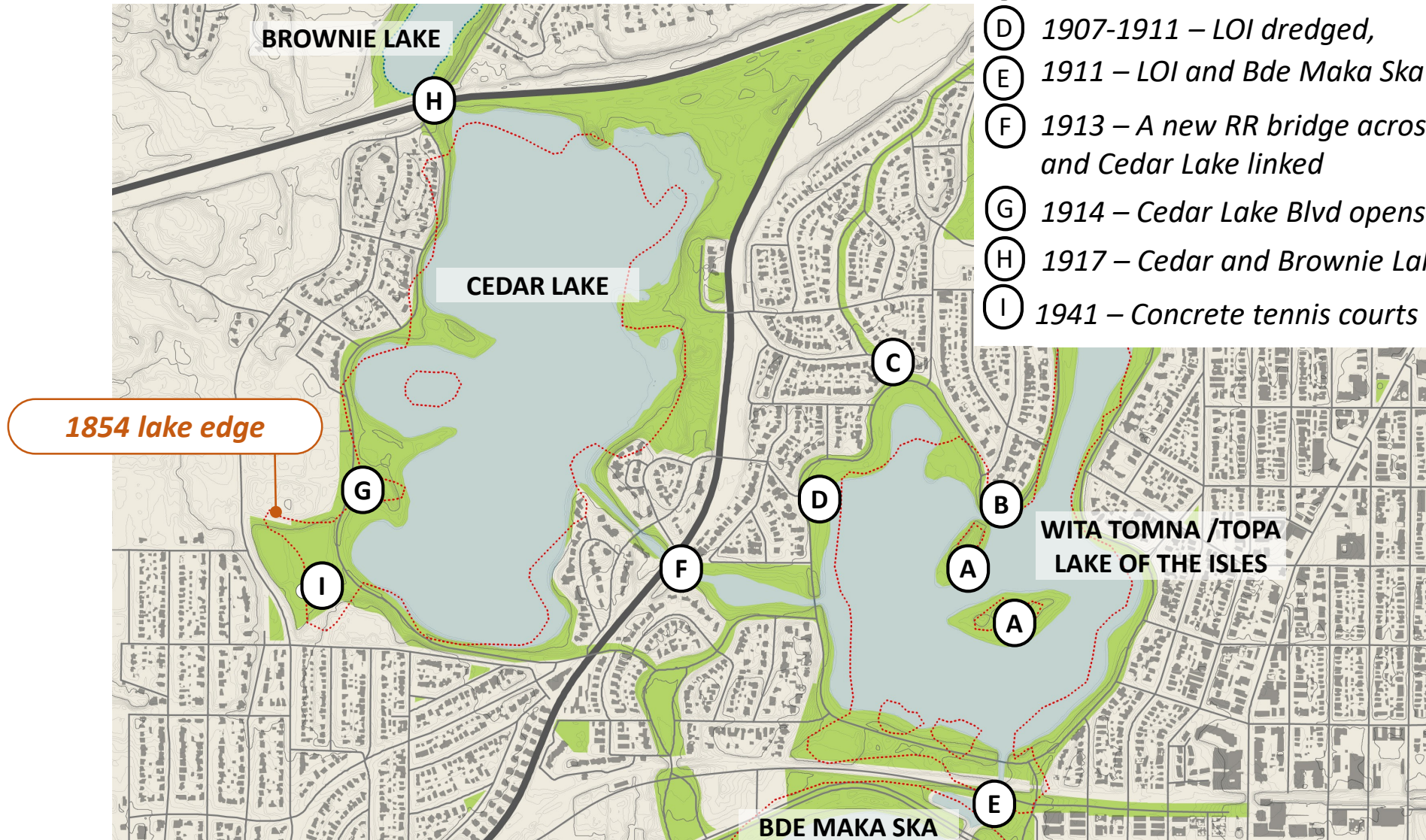


Historic Context - 1937



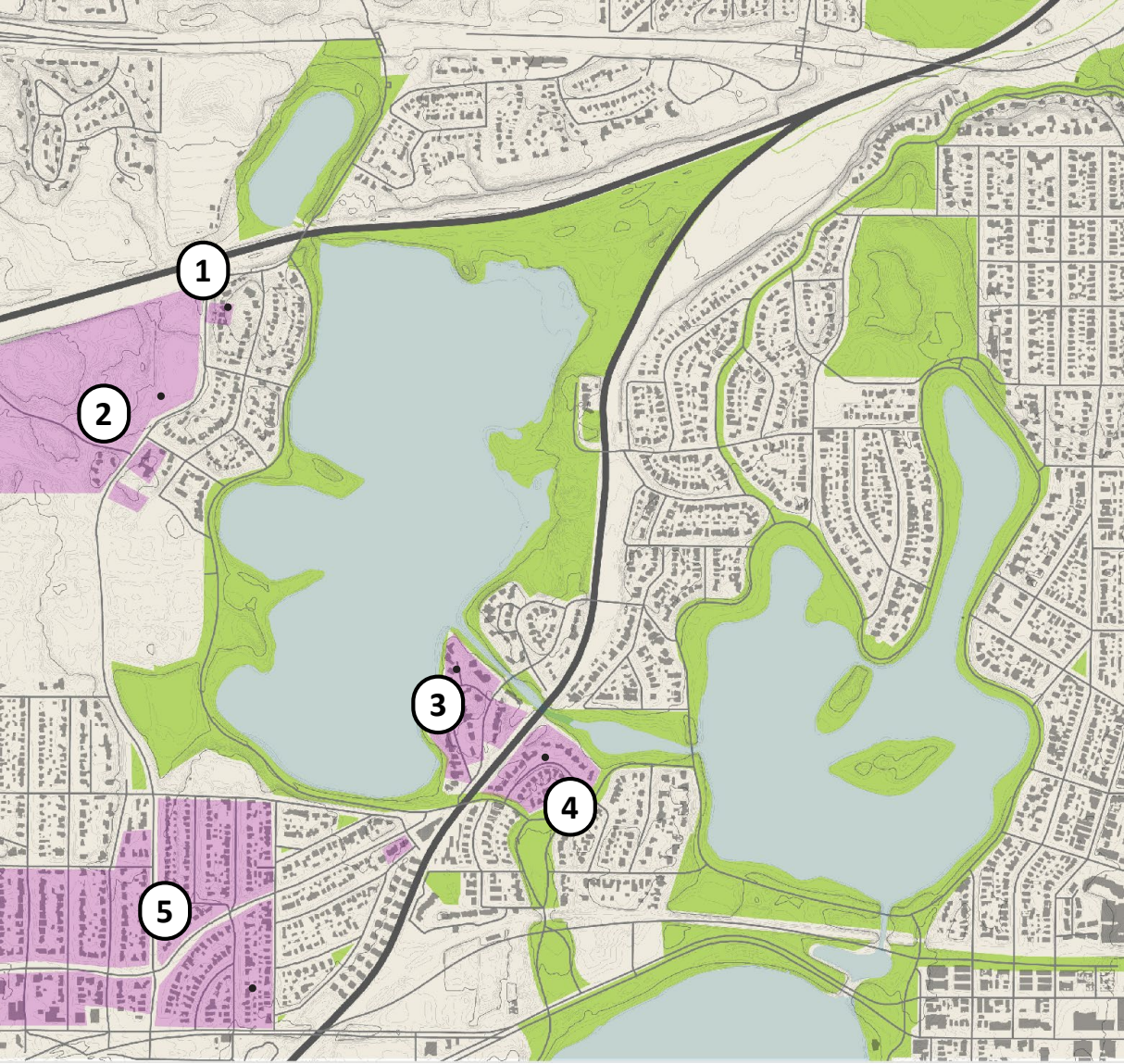
Kenilworth Lagoon - 1936

PERIOD PLAN 1942



- (A) 1887 – MBPC purchased islands
- (B) 1888 – The first PWKY was completed
- (C) 1891 – Peavy Fountain dedicated
- (D) 1907-1911 – LOI dredged,
- (E) 1911 – LOI and Bde Maka Ska linked
- (F) 1913 – A new RR bridge across LOI Blvd built, LOI and Cedar Lake linked
- (G) 1914 – Cedar Lake Blvd opens
- (H) 1917 – Cedar and Brownie Lake linked
- (I) 1941 – Concrete tennis courts built at Cedar

RESTRICTIVE COVENANTS



- ① 1924. McNair Park. “No person or persons other than of the white race shall be permitted to occupy said premises or any part thereof”
- ② 1939. Forest Tract Lake Forest Addition. “No lot, plot, or parcel shall be sold, leased, mortgaged, used or occupied, nor any right thereto be granted, given or permitted to any person other than a member of the Caucasian race”
- ③ 1936. Rees Tract Cedar Shores Addition. “Shall not at any time be conveyed, mortgaged, or leased to any person or persons of Chinese, Japanese, Moorish, Turkish, Negro, Mongolian or African blood or descent”
- ④ 1915. Walton Hills 2nd Addition. “The parties of the second part hereby agrees that the premises hereby conveyed shall not any time be conveyed, mortgaged or leased to any person or persons of Chinese, Japanese, Moorish, Turkish, Negro, Mongolian, Semitic or African blood or descent.”
- ⑤ 1930. Sunset Gables. “shall not be sold, mortgaged, or leased to or occupied by any person or persons other than members of the Caucasian race”

USES + DEMOGRAPHICS



ACCEPTABLE USES

The Grand Rounds was designed for type recreation people did in the late 1800/early 1900s—mostly passive activities including walking, going for drives, boating, bicycling.

ADJACENT DEMOGRAPHICS

Property values spiked in the early 1900s, especially around Lake of the Isles after it was dredged. Most of the first residents were wealthy white people (and generally still are).



Grounding Question 02:

How should the park's historical development be honored, while incorporating contemporary needs and values?

Prompts:

- What elements of the history of this landscape is being honored or preserved today?
- What stories are not being told?
- Where are points of conflict between honoring history and contemporary values?
- What tools and opportunities are there to communicate the multi-layered past of this landscape in the future?

A top-down view of a pond. The water is dark, and the surface is covered with numerous lily pads of various shades of green, some showing signs of decay or damage. Interspersed among the lily pads are many fallen autumn leaves in vibrant shades of red, orange, and yellow. The overall scene is a rich, textured display of natural elements in a seasonal setting.

PUBLIC COMMENT

How to share your feedback

- **Share your feedback verbally:**
 - Up to 1 minute
 - Write "Comment" in the chatbox and we will call on you in order
- **Share your feedback through writing:**
 - Write your feedback in the chatbox

CAC #1
"ACCESS"

CAC #2
"HISTORY"

CAC #3
"RESILIENCY"

Reflection

Community Engagement



SEPTEMBER

OCTOBER

NOVEMBER

DECEMBER



THANK YOU for participating!

Questions or comments?

Emma Pachuta, Senior Planner

612-499-3711

epachuta@minneapolisparcs.org

Find more project information at

www.minneapolisparcs.org/cedar-isles